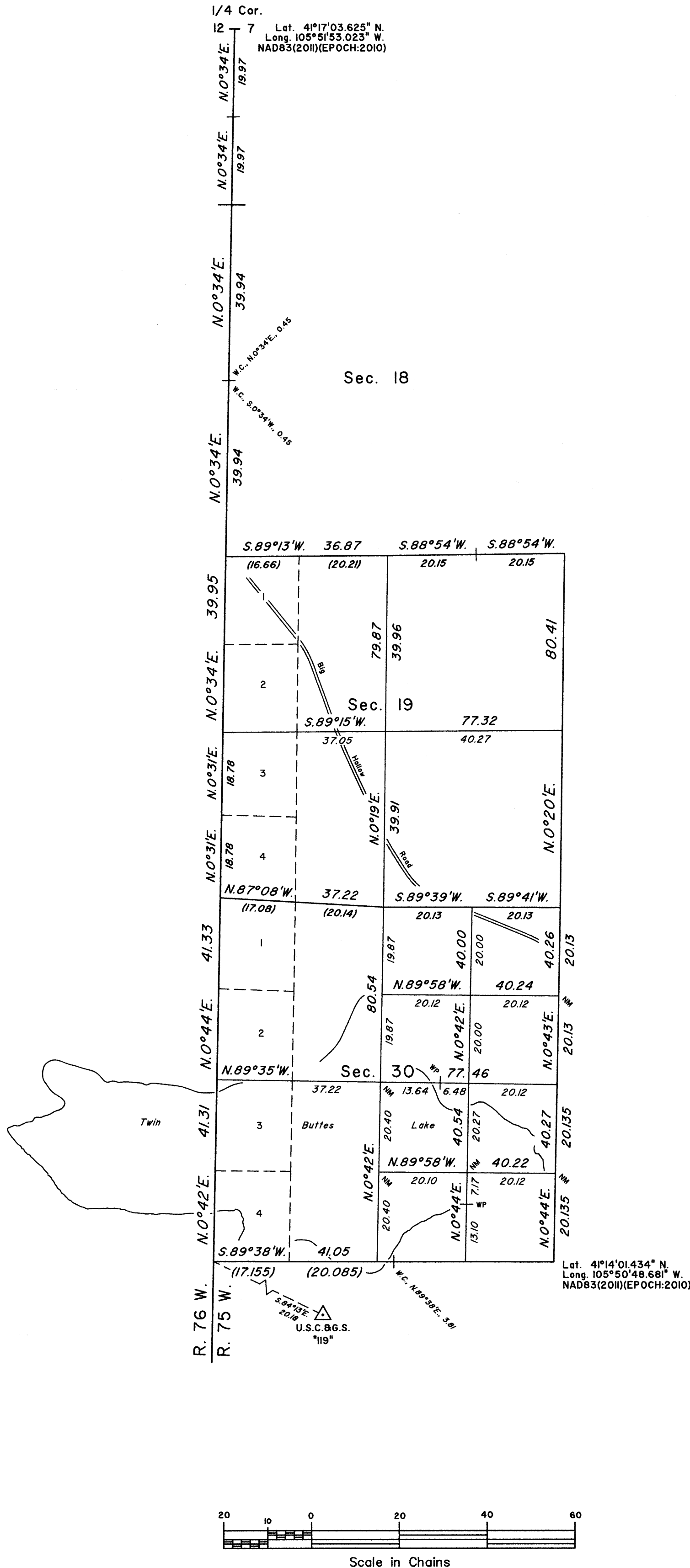
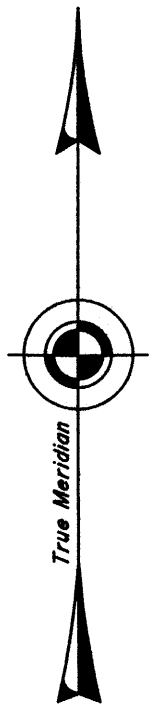


T. 15 N., R. 75 W., Sixth Principal Meridian, Wyoming, Field Note Links

Plat Accession Number(s)	Year(s) of Survey	
		Township Subdivision Plats
8839	2021-22	https://www.wy.blm.gov/cadastral/countyplats/albany/fieldnotes/t15nr75w_gp1038fn.pdf
8794	2019	https://www.wy.blm.gov/cadastral/countyplats/albany/fieldnotes/t15nr75w_gp1010fn.pdf
103	1870	https://www.wy.blm.gov/cadastral/countyplats/albany/fieldnotes/t15nr75w_c005fn.pdf
		Township Exterior Plats
38	1870	https://www.wy.blm.gov/cadastral/countyplats/albany/fieldnotes/ext0038.pdf

TOWNSHIP 15 NORTH, RANGE 75 WEST, OF THE SIXTH PRINCIPAL MERIDIAN, WYOMING.

DEPENDENT RESURVEY AND SURVEY



A history of surveys is contained in the field notes.

This plat represents the dependent resurvey of a portion of the west boundary, and a portion of the subdivisional lines, designed to restore the corners in their true original locations according to the best available evidence, and the survey of the subdivision of sections 19 and 30, T. 15 N., R. 75 W., Sixth Principal Meridian, Wyoming.

The lotting and areas are as shown on the plat approved February 4, 1871.

Survey executed by Eric J. Bearden, Cadastral Surveyor, beginning June 29, 2021, and completed August 31, 2022, pursuant to special instructions and assignment instructions dated June 2, 2021, for Group No. 1038, Wyoming.

Note: NM indicates corner not monumented.

Note: Lines not showing bearings and distances were resurveyed by David C. Lee in 2019.

UNITED STATES DEPARTMENT OF THE INTERIOR
BUREAU OF LAND MANAGEMENT

Cheyenne, Wyoming November 18, 2022

This plat is strictly conformable to the approved field notes, and the survey, having been correctly executed in accordance with the requirements of law and the regulations of this Bureau, is hereby accepted.

For the Director

Sonja S. Sparks
Chief Cadastral Surveyor for Wyoming

TOWNSHIP 15 NORTH, RANGE 75 WEST, OF THE SIXTH PRINCIPAL MERIDIAN, WYOMING.

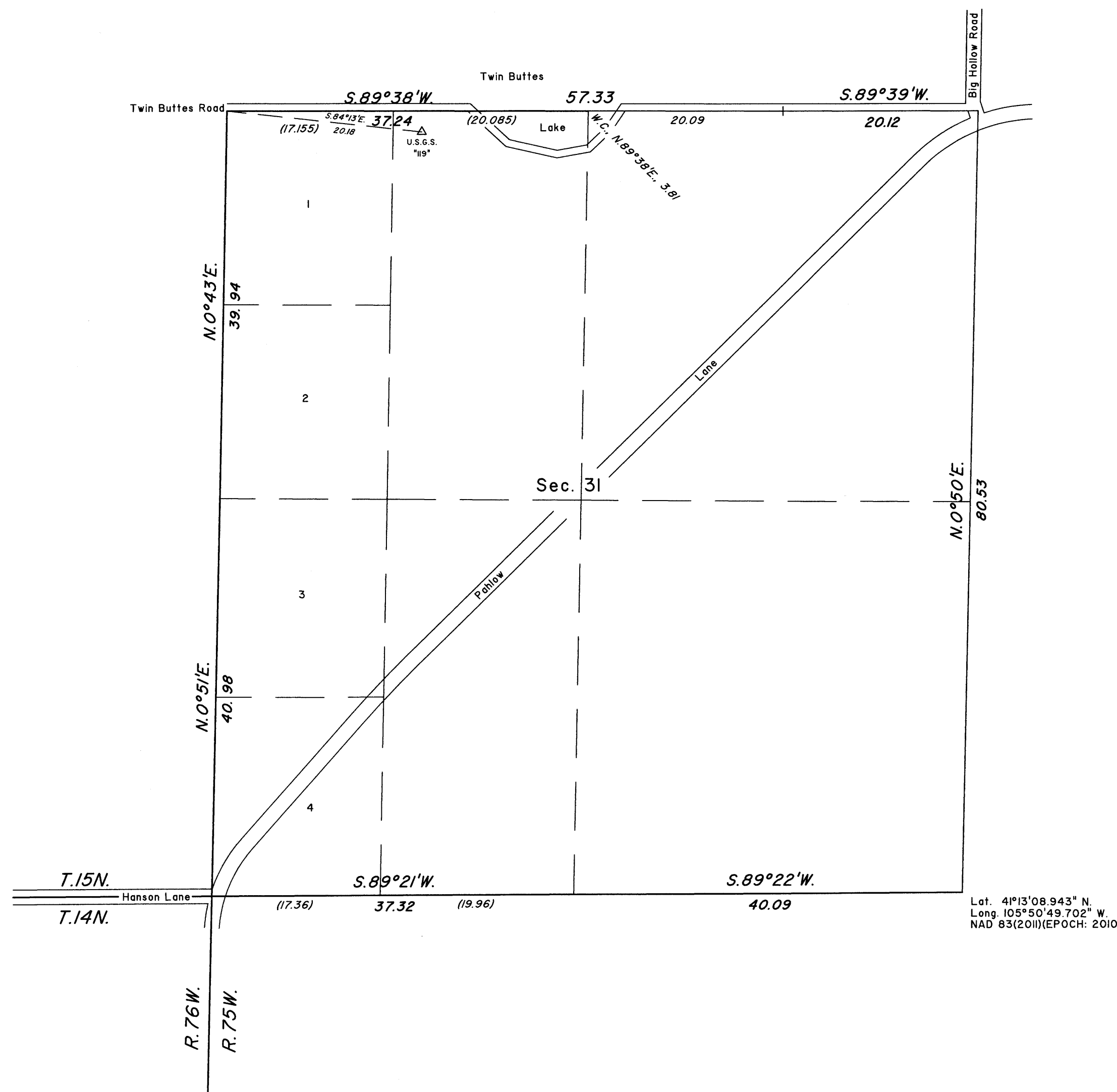
DEPENDENT RESURVEY

A history of surveys is contained in the field notes.

This plat represents the dependent resurvey of a portion of the south and west boundaries, and portion of the subdivisional lines, designed to restore the corners in their true original locations according to the best available evidence, T. 15 N., R. 75 W., Sixth Principal Meridian, Wyoming.

Except as indicated hereon, the lotting and areas are as shown on the plat approved February 4, 1871.

Survey executed by David C. Lee, Cadastral Surveyor, beginning March 20, 2019, and completed May 16, 2019, pursuant to special instructions and assignment instructions dated February 11, 2019, for Group No. 1010, Wyoming.



UNITED STATES DEPARTMENT OF THE INTERIOR
BUREAU OF LAND MANAGEMENT

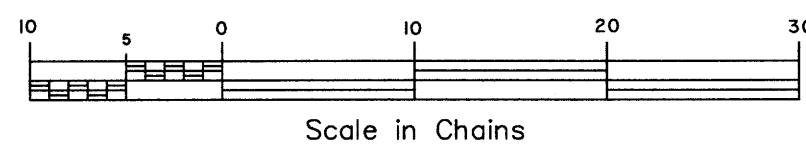
Cheyenne, Wyoming August 26, 2020

This plat is strictly conformable to the approved field notes, and the survey, having been correctly executed in accordance with the requirements of law and the regulations of this Bureau, is hereby accepted.

For the Director

Soja S. Sparks
Soja S. Sparks

Chief Cadastral Surveyor for Wyoming

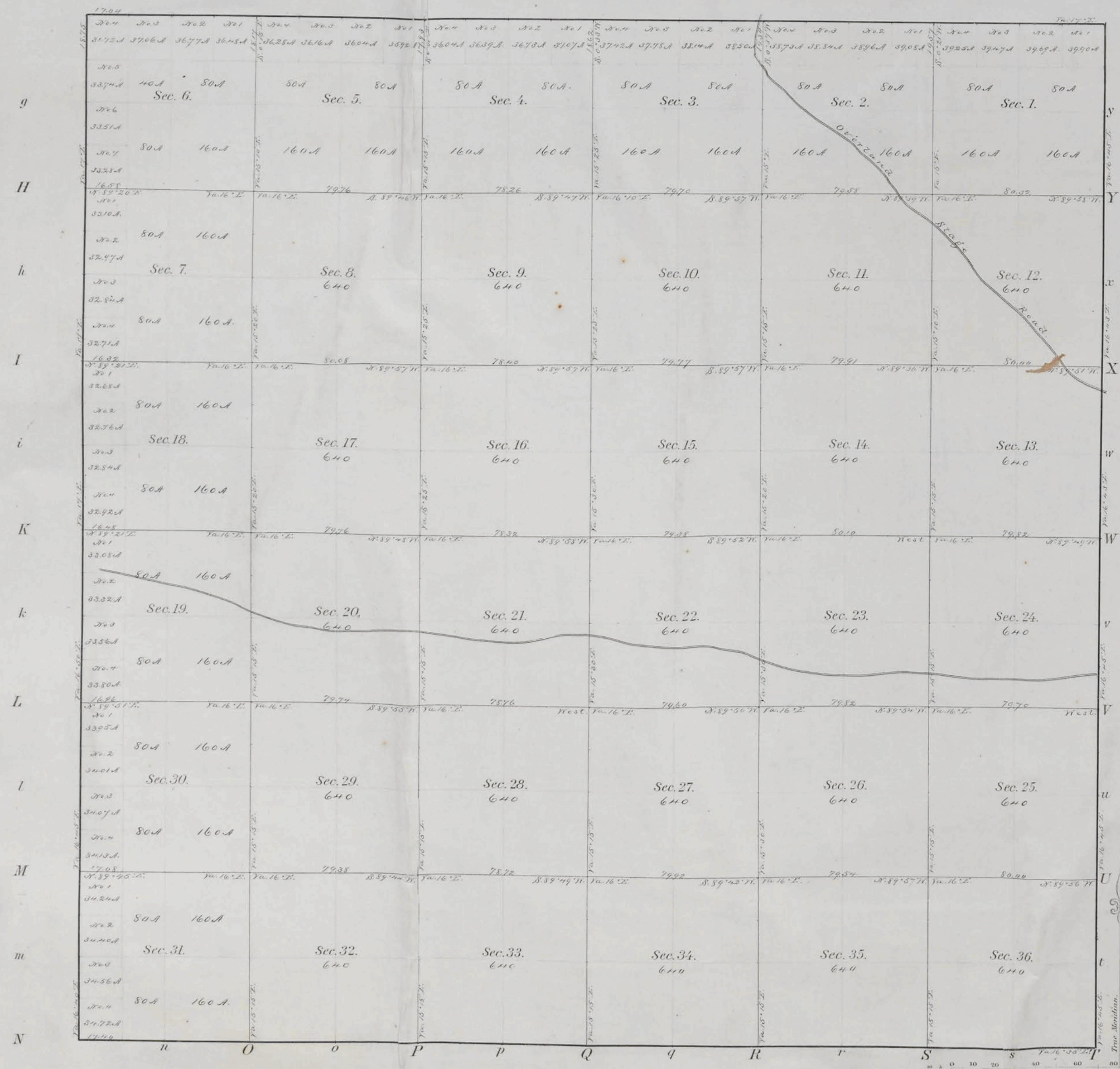


Scale in Chains

No. 12.

TOWNSHIP N^o 15 NORTH RANGE N^o 75 WEST OF 6th PRINCIPAL MERIDIAN

G r F e E d D c C b B a A



Meanders of								
Posts	Courses	Ch ^s Lk ^s	Posts	Courses	Ch ^s Lk ^s	Posts	Courses	Ch ^s Lk ^s

22829.59 Total number of Acres.

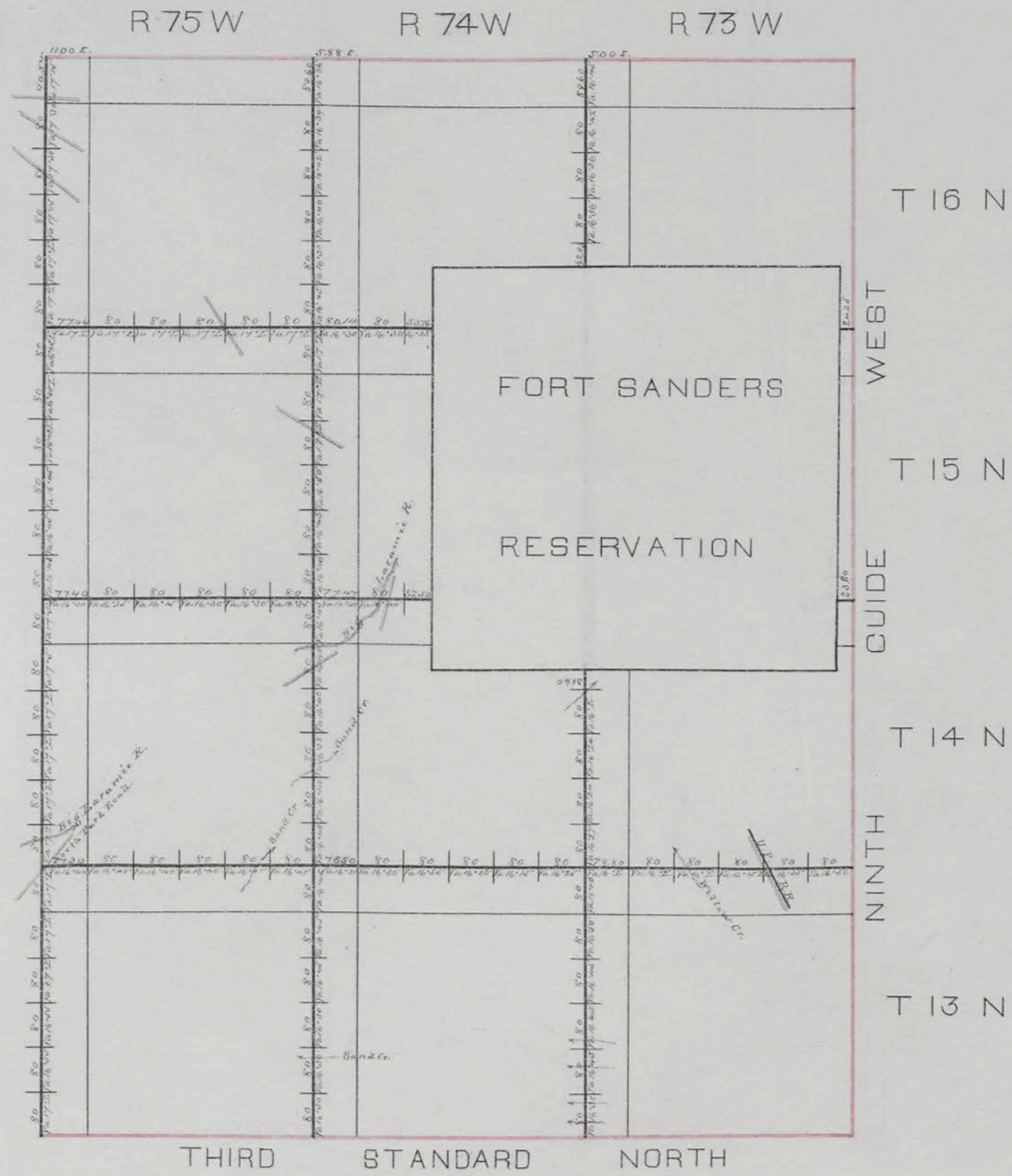
Surveys Designated	By Whom Surveyed	Date of Contract	Amount of Surveys	When Surveyed
Township lines	Wenzers Cook	June 21 st 1870	M. Ch ^s Lk ^s	August 1870
Subdivisions	Stephen W. Downey	August 27 th 1870	59 - 45 - 39	Nov 19 th - 26 th 1870

The above Map of Township N^o 15 North of Range N^o 75 West of 6th Principal Meridian in Wyoming Territory is strictly conformable to the field notes of the survey thereof on file in this Office, which have been examined and approved.

Surveyor General's Office } *Silas Reed*
Cheyenne W.T. Eddy 4th 1871. } Sur. Gen!

Indexed

EXTERIOR LINES



<i>Surveys Designated</i>	<i>By Whom Surveyed</i>	<i>Date of Contract</i>	<i>Am't of Surveys</i>	<i>When Surveyed</i>
<i>Exterior Lines</i>	<i>Winters & Co.</i>	<i>June 21st 1870</i>	<i>26. 64. 142.</i> <i>78. 51. 60.</i>	<i>August 1870.</i>

I hereby certify that the above Map of the Exterior Lines of Townships 13, 14, 15 and 16 North, Ranges 73, 74 and 75 West of the 6th Principal Meridian, in Wyoming Territory, is strict-ly conformable to the field notes of the survey thereof, on file in this office, which have been examined and approved.

*Surveyor General's Office
Cheyenne W.T. Aug. 27th 1870*

Silas Reed
Surt. Genl.