

UNITED STATES  
DEPARTMENT OF THE INTERIOR  
BUREAU OF LAND MANAGEMENT

**FIELD NOTES**

OF THE

DEPENDENT RESURVEY

OF LOT NO. 39 AND LOT NO. 42,

A PORTION OF LOT NO. 38 AND LOT NO. 40,

A PORTION OF THE TWELFTH GUIDE MERIDIAN WEST,

THROUGH TOWNSHIP 55 NORTH, BETWEEN RANGES 96 AND 97 WEST,

A PORTION OF THE SUBDIVISIONAL LINES,

AND THE SURVEY OF THE SUBDIVISION OF SECTION 7,

TOWNSHIP 55 NORTH, RANGE 96 WEST,

OF THE SIXTH PRINCIPAL MERIDIAN,

IN THE STATE OF WYOMING.

**EXECUTED BY**

JAMES E. JACOB

CADASTRAL SURVEYOR

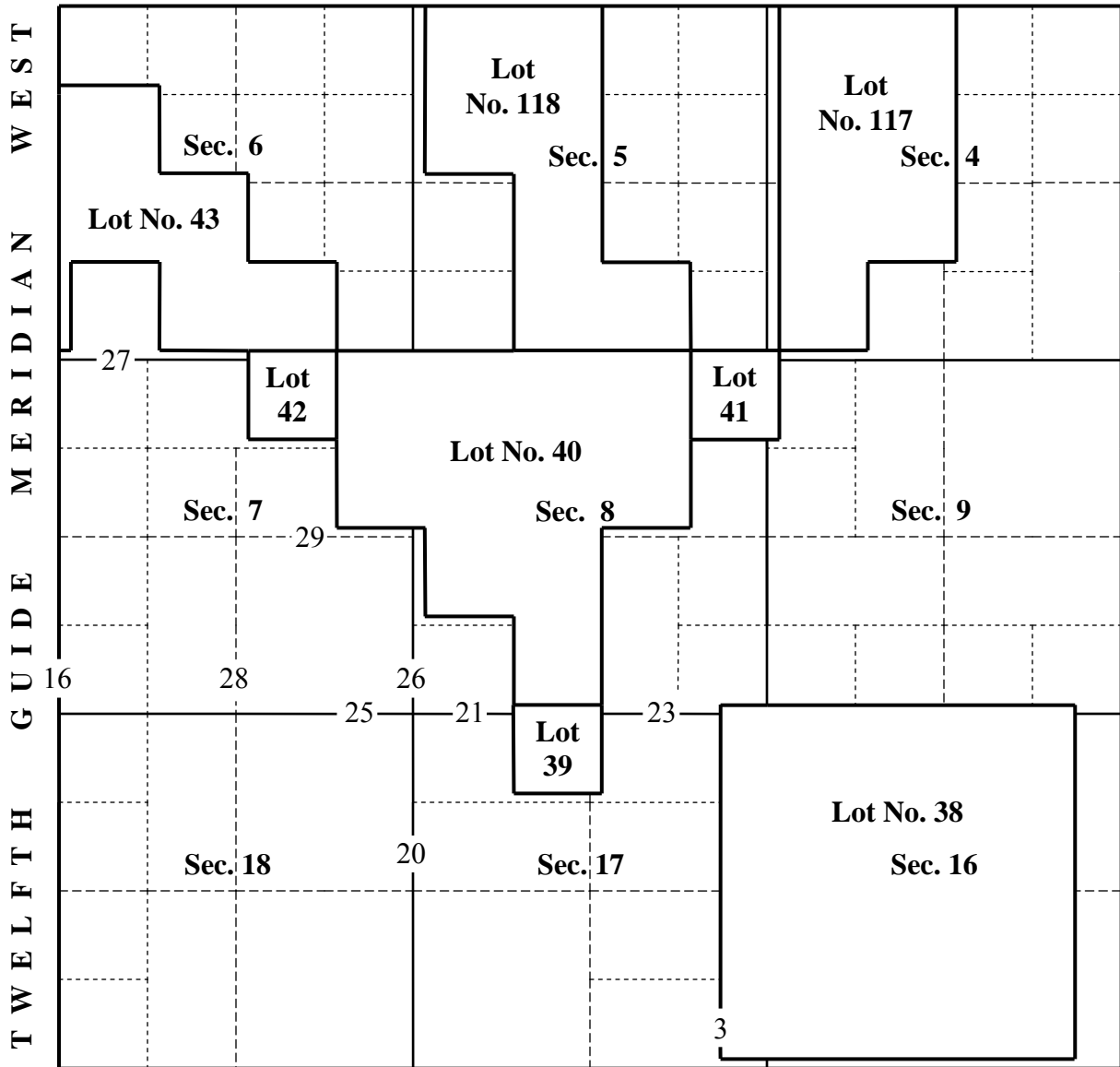
Under Special Instructions dated MAY 26, 2011, approved MAY 26, 2011, which provided for the surveys included under Group Number 844, Wyoming, and Assignment Instructions dated MAY 26, 2011.

Survey commenced JUNE 20, 2011

Survey completed MAY 3, 2012

# INDEX DIAGRAM

**Township 55 North, Range 96 West**



Dependent Resurvey of Lot No. 39 .....	Page 4
Dependent Resurvey of a Portion of Lot No. 40 .....	Page 8
Dependent Resurvey of Lot No. 42 .....	Page 14
Subdivision of the NE1/4 of Section 7 .....	Page 30
Subdivision of the NW1/4 of Section 7 .....	Page 30

## T. 55 N., R. 96 W., Sixth Principal Meridian, Wyoming

<p><b>Chains</b></p>	<p>The following field notes are those of the dependent resurvey of Lot No. 39 and Lot No. 42, a portion of Lot No. 38 and Lot No. 40, a portion of the Twelfth Guide Meridian West, through Township 55 North, between Ranges 96 and 97 West, a portion of the subdivisional lines and the survey of the subdivision of section 7, Township 55 North, Range 96 West, Sixth Principal Meridian, Wyoming.</p> <p>The history of surveys pertaining to this resurvey is as follows:</p> <p>Theodore Binge surveyed the Twelfth Guide Meridian West (west boundary) and the subdivisional lines in 1883. These surveys were subsequently cancelled with the survey of private land claims and the independent resurvey of the Twelfth Guide Meridian West and the subdivisional lines executed by Walter E. Hoffman in 1904.</p> <p>Several local surveys have been executed throughout the area and the acceptance of these surveys is detailed herein.</p> <p>A discrepancy with the running distances reported on the 1904 plat and field notes was encountered between secs. 8 and 17 when compared to the retracement and resurvey of this line. The identified error was made when the distance of the blank line across Lot No. 39 was returned. The unknown magnitude of this error subsequently was carried over to the returned total running distance, 68.19 chs., of the line bet. secs. 8 and 17. Due to the error, the E. 1/16 sec. cor. of secs. 8 and 17 was determined ignoring the 1904 running distances as the line crossed line 1-2, Lot No. 39 and at the termination of the line at the 1904 closing cor. on line 3-4, Lot No. 38. A detailed description of the error encountered and the method used to determine the position of the E. 1/16 sec. cor. is contained in the description of the corners along the line bet. secs. 8 and 17 beginning on page 21.</p> <p>The survey was executed in accordance with the specifications as set forth in the Manual of Surveying Instructions, 2009, and the Special Instructions for Group No. 844, Wyoming, dated May 26, 2011.</p> <p>Preliminary to the resurvey, the lines of the previous surveys were retraced and diligent search was made for all corners and other calls of the field note record. Identified corners were remonumented in their original positions. Lost corners were reestablished and monumented at proportionate positions based on the latest official record, but only after exhausting every possibility of finding direct evidence of such corners. The retracement data were</p>
----------------------	---

## T. 55 N., R. 96 W., Sixth Principal Meridian, Wyoming

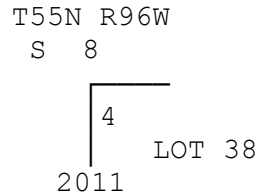
<p><b>Chains</b></p>	<p>thoroughly verified and only true line field notes are given herein, which refer to the completed survey.</p> <p>The survey was executed with TRIMBLE Model 5800 Global Positioning System (GPS) receivers. The GPS procedures used were in accordance with IM No. 2010-094, "Incorporating Standards for the Positional Accuracy of Cadastral Surveys When Using Global Navigation Satellite Systems," dated April 1, 2010. The directions of all lines refer to the true meridian as determined by GPS observations. The Online Positioning User Service (OPUS)-Static computed coordinates for BLM GPS Control Point, hereinafter described, based on NAD 83(2011)(EPOCH:2010.0000), is:</p> <table data-bbox="500 779 1328 848"> <thead> <tr> <th>Name</th> <th>Latitude</th> <th>Longitude</th> <th>HAE</th> </tr> </thead> <tbody> <tr> <td>6032</td> <td>44°45'06.4600" N.</td> <td>108°26'37.5792" W.</td> <td>4062.21 sft.</td> </tr> </tbody> </table> <p>GPS control network and supporting data are contained in the group file.</p> <p>The geographic position of the cor. of secs. 7, 12, 13 and 18, on the Twelfth Guide Meridian West (west boundary), based on NAD 83(2011)(EPOCH:2010.0000) and determined by Global Positioning Methods, is:</p> <p>Latitude 44° 45' 08.593" N., Longitude 108° 28' 14.925" W.</p> <p>The geographic position of Cor. No. 3, Lot No. 38, based on NAD 83(2011)(EPOCH:2010.0000) and determined by Global Positioning Methods, is:</p> <p>Latitude 44° 44' 17.828" N., Longitude 108° 25' 59.526" W.</p> <p>The geographic position of the intersection of the line bet. secs. 7 and 8 with line 8-9, Lot No. 40, based on NAD 83(2011)(EPOCH:2010.0000) and determined by Global Positioning Methods, is:</p> <p>Latitude 44° 45' 35.990" N., Longitude 108° 27' 02.621" W.</p> <p>The mean magnetic declination, as computed by the National Geophysical Data Center (NGDC) declination calculator, is 11¼° E.</p> <hr/>	Name	Latitude	Longitude	HAE	6032	44°45'06.4600" N.	108°26'37.5792" W.	4062.21 sft.
Name	Latitude	Longitude	HAE						
6032	44°45'06.4600" N.	108°26'37.5792" W.	4062.21 sft.						

Dependent Resurvey of a Portion of Lot No. 38,  
T. 55 N., R. 96 W., Sixth Principal Meridian, Wyoming

Chains	<p>(Restoring the survey executed by Walter E. Hoffman in 1904)</p> <hr style="width: 25%; margin: auto;"/>
	<p>Beginning at Cor. No. 3, Lot No. 38, monumented with a sandstone, 24 x 13 x 4 ins., firmly set 13 ins. in the ground, plainly mkd. 3/38 on E. face.</p> <p>At the corner point</p> <p>Set a stainless steel post, 28 ins. long, 2½ ins. diam., 26 ins. in the ground, atop a plastic encased magnetic marker, in a collar of stone, with brass cap mkd.</p> <div style="text-align: center; margin: 20px 0;"> <p style="margin: 0;">T55N R96W Lot 38 3 S 17 2011</p> </div> <p>Bury the 1904 resurvey cor. stone and set a steel fence post alongside the stainless steel post.</p> <p>N. 0° 08' E., on line 3-4, Lot No. 38.</p> <p>Over gently rolling terrain.</p>
30.00	Begin ascent of W. slope of ridge.
55.00	Ridge bears N. and SE.; descend over wide, flat top of ridge.
78.26	Point of intersection of the line between secs. 8 and 17 with line 3-4, Lot No. 38, hereinafter described.
79.95	<p>Cor. No. 4, Lot No. 38, monumented with a sandstone, 24 x 14 x 4 ins., firmly set 17 ins. in the ground, plainly mkd. 4/38 on SE. face.</p> <p>At the corner point</p> <p>Set a stainless steel post, 28 ins. long, 2½ ins. diam., 18 ins. in the ground, atop a plastic encased magnetic marker, in a supporting mound of stone, 3 ft. base to top, with brass cap mkd.</p>

Dependent Resurvey of a Portion of Lot No. 38,  
T. 55 N., R. 96 W., Sixth Principal Meridian, Wyoming

**Chains**



Bury the 1904 resurvey cor. stone and set a steel fence post alongside the stainless steel post.

Cor. is located alongside exposed rim rock of N. facing slope of ridge.

---

Dependent Resurvey of Lot No. 39,  
T. 55 N., R. 96 W., Sixth Principal Meridian, Wyoming

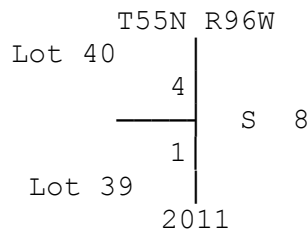
---

(Restoring the survey executed by  
Walter E. Hoffman in 1904)

---

Beginning at the point for Cor. No. 1, Lot No. 39, identical with Cor. No. 4, Lot No. 40, determined at proportionate distance by method of broken boundary adjustment; there is no remaining evidence of the 1904 resurvey cor.

Set a stainless steel post, 28 ins. long, 2½ ins. diam., 26 ins. in the ground, atop a plastic encased magnetic marker, with brass cap mkd.



Set a steel fence post alongside the stainless steel post.

Note: This position was reestablished utilizing Cor. No. 2 and Cor. No. 4 of Lot No. 39 due to their shorter distances when compared to the record distance of line 3-4, Lot No. 40. This method was deemed the most appropriate because the reestablished lines of Lot No. 39 are consistent with the recovered lines of Lot No. 39.

S. 0° 04' W., on line 1-2, Lot No. 39.

Dependent Resurvey of Lot No. 39,  
T. 55 N., R. 96 W., Sixth Principal Meridian, Wyoming

<b>Chains</b>	<p>Over gently rolling terrain.</p>
1.76	<p>Point of intersection of the line between secs. 8 and 17 with line 1-2, Lot No. 39, hereinafter described.</p> <p>Ascend steep and rocky NW. slope.</p>
3.90	<p>Narrow ridge bears ENE. and WSW. Descend rocky slope.</p>
7.00	<p>Terrain becomes gently rolling.</p>
20.05	<p>Cor. No. 2, Lot No. 39, monumented with a sandstone, 19 x 12 x 3 ins., firmly set 12 ins. in the ground, dimly mkd. 2/39 on NW face.</p> <p>At the corner point</p> <p>Set a stainless steel post, 28 ins. long, 2½ ins. diam., 26 ins. in the ground, atop a plastic encased magnetic marker, with brass cap mkd.</p> <div style="text-align: center;"> </div> <p>Bury the 1904 resurvey cor. stone and set a steel fence post alongside stainless steel post.</p> <hr style="width: 25%; margin: 10px auto;"/> <p>N. 89° 47' W., on line 3, Lot No. 39.</p> <p>Descend over gently rolling terrain.</p>
1.48	<p>Road, dirt surface, bears N. and S.</p>
6.40	<p>Descend into Foster Gulch, drains N.</p>
17.60	<p>Leave Gulch; ascend over gently sloping terrain.</p>
20.75	<p>Cor. No. 3, Lot No. 39, monumented with a sandstone, 27 x 18 x 3 ins., firmly set 18 ins. in the ground, plainly mkd. 3/39 on NE. face.</p> <p>At the corner point</p>

Dependent Resurvey of Lot No. 39,  
T. 55 N., R. 96 W., Sixth Principal Meridian, Wyoming

<b>Chains</b>	<p>Set a stainless steel post, 28 ins. long, 2½ ins. diam., 26 ins. in the ground, atop a plastic encased magnetic marker, with brass cap mkd.</p> <div style="text-align: center; margin: 10px 0;"> <p>T55N R96W Lot 39 3 S 17 2011</p> </div> <p>Bury the 1904 resurvey cor. stone and set a steel fence post alongside the stainless steel post.</p> <hr style="width: 25%; margin: 10px auto;"/> <p>N. 0° 06' E., on line 3-4, Lot No. 39.</p> <p>Over nearly level terrain.</p> <p>7.92 Barbed wire fence bears NNE. and SSW.</p> <p>15.95 Road, dirt surface, on curve, bears SE. and NNW.</p> <p>18.18 The 1904 resurvey closing cor. of secs. 8 and 17, on line 3-4, Lot No. 39, monumented with a sandstone, 20 x 14 x 5 ins., firmly set 14 ins. in the ground, plainly mkd. 39 on E. face and 4 grooves on S. face, no other mks. visible, with an embedded mound of stone W. of the cor. This position is filed in the Big Horn County Clerk's Office.</p> <p>At the corner point</p> <p>Set a stainless steel post, 28 ins. long, 2½ ins. diam., 26 ins. in the ground, atop a plastic encased magnetic marker, in a collar of stone, with brass cap mkd.</p> <div style="text-align: center; margin: 10px 0;"> <p>T55N R96W S 8 C ——— C S 17 39 LOF 2011</p> </div> <p>Remove the embedded mound of stone to the collar of stone. Bury the 1904 resurvey cor. stone and set a steel fence post alongside the stainless steel post.</p>
---------------	--

Dependent Resurvey of Lot No. 39,  
T. 55 N., R. 96 W., Sixth Principal Meridian, Wyoming

<b>Chains</b>	<p>Note: This position was utilized as the best available evidence of the longitudinal location of line 3-4, Lot No. 39, and will now function as an angle point on this line. Additional discussion of the utilization of this cor. position is contained in the description of Cor. No. 4, Lot No. 39.</p> <p>From this point, BLM GPS control point 6032 bears S. 3° 05' W., 3.60 chs. dist., monumented with an iron FENO® rod, 24 ins. long, ¾ in. diam., firmly set flush with the surface of the ground, in a collar of stone, with aluminum cap mkd. D.O.I. B.L.M. GPS CONTROL POINT 6032 2011 and a triangle.</p> <hr style="width: 20%; margin: 10px auto;"/> <p>N. 0° 06' E., beginning new measurement.</p> <p>1.83 Point for Cor. No. 4, Lot No. 39, identical with Cor. No. 5, Lot No. 40, on projection of lot line from the S., at record distance from the 1904 resurvey closing cor. of secs. 8 and 17 on line 3-4, Lot No. 39, point falls alongside old trail road; there is no remaining evidence of the 1904 resurvey cor. Wesley W. Reed, Wyoming Professional Land Surveyor No. 537, did not recover this position in 1979 as noted on his CERTIFIED LAND CORNER RECORDATION for the closing cor. of secs. 8 and 17 on line 3-4, Lot No. 39, filed in the Big Horn County Clerk's Office.</p> <p>Set a stainless steel post, 28 ins. long, 2½ ins. diam., 26 ins. in the ground, atop a plastic encased magnetic marker, with brass cap mkd.</p> <div style="text-align: center; margin: 10px 0;"> </div> <p>Set a steel fence post alongside the stainless steel post.</p> <p>Note: Record distance on the projected bearing from Cor. No. 3, Lot No. 39, through the 1904 closing cor. was deemed the most appropriate method because of the short distance of the 1904 tie and the nearly level terrain along line 3-4, Lot No. 39. Due to the loss of the 1904 cor. positions to the N. and E., restoration at proportionate distance utilizing a method of boundary adjustment results in multiple solutions for this position that do not return consistent bearings and distances along the reestablished lines when compared to the 1904 record.</p> <hr style="width: 20%; margin: 10px auto;"/>
---------------	---

Dependent Resurvey of Lot No. 39,  
T. 55 N., R. 96 W., Sixth Principal Meridian, Wyoming

<b>Chains</b>	<p>S. 89° 53' E., on line 4-1, Lot No. 39, identical with line 4-5, Lot No. 40.</p> <p>Over gently rolling terrain to Foster Gulch.</p>
0.35	Barbed wire fence bears SE. and NW.
10.10	Wash in bottom of Foster Gulch drains NNW.
16.60	Barbed wire fence bears ENE. and WSW.
17.60	Road, dirt surface, on curve, bears NE. and SSW.
19.30	Fence, in disrepair, bears SE. and NW.
20.74	Cor. No. 1, Lot No. 39, identical with Cor. No. 4, Lot No. 40, hereinbefore described.
<hr/> <p>Dependent Resurvey of a Portion of Lot No. 40, T. 55 N., R. 96 W., Sixth Principal Meridian, Wyoming</p> <hr/> <p>(Restoring the survey executed by Walter E. Hoffman in 1904)</p> <hr/>	
	<p>From Cor. No. 4, Lot No. 40, identical with Cor. No. 1, Lot No. 39.</p> <p>N. 89° 53' W., on line 4-5, Lot No. 40, identical with line 4-1, Lot No. 39.</p> <p>Note: Refer to the description of line 4-1, Lot No. 39, hereinbefore described for topographic calls along this line.</p>
20.74	Cor. No. 5, Lot No. 40, identical with Cor. No. 4, Lot No. 39, hereinbefore described.
	<hr/> <p>N. 1° 24' W., on line 5-6, Lot No. 40.</p> <p>Over gently rolling terrain along westerly extent of Foster Gulch.</p>
0.32	Barbed wire fence bears SE. and NW.

Dependent Resurvey of a Portion of Lot No. 40,  
T. 55 N., R. 96 W., Sixth Principal Meridian, Wyoming

Chains	
19.97	<p>Point for Cor. No. 6, Lot No. 40, determined at proportionate distance by method of broken boundary adjustment, falls in area previously disturbed by construction or maintenance of canal; there is no remaining evidence of the 1904 resurvey cor. position.</p> <p>Set a stainless steel post, 28 ins. long, 2½ ins. diam., 26 ins. in the ground, atop a plastic encased magnetic marker, with brass cap mkd.</p> <div style="text-align: center;"> <p style="margin: 0;">T55N R96W Lot 40</p> <p style="margin: 0;">S 8 6 2011</p> </div> <p>Set a steel fence post alongside the stainless steel post.</p> <p>Cor. is located 85 lks. S. of canal, 40 lks. wide, drains SE.</p> <hr style="width: 20%; margin: 10px auto;"/> <p>S. 89° 52' W., on line 6-7, Lot No. 40.</p> <p>Ascend over gently rolling terrain.</p>
6.61	Barbed wire fence bears N. and S.
9.00	Road, dirt surface, bears SSE. and NNW.
20.64	<p>Cor. No. 7, Lot No. 40, monumented with a sandstone, 23 x 8 x 5 ins., firmly set 14 ins. in the ground, plainly mkd. 7 40 on NE. face.</p> <p>At the corner point</p> <p>Set a stainless steel post, 28 ins. long, 2½ ins. diam., 25 ins. in the ground, atop a plastic encased magnetic marker, with brass cap mkd.</p> <div style="text-align: center;"> <p style="margin: 0;">T55N R96W LOT 40</p> <p style="margin: 0;">S 8 7 2011</p> </div>

Dependent Resurvey of a Portion of Lot No. 40,  
T. 55 N., R. 96 W., Sixth Principal Meridian, Wyoming

<b>Chains</b>	<p>Bury the 1904 resurvey cor. stone and set a steel fence post alongside the stainless steel post.</p> <hr style="width: 25%; margin: 10px auto;"/> <p>N. 1° 32' W., on line 7-8, Lot No. 40.</p> <p>Ascend over gently rolling to rolling terrain.</p> <p>7.10 Spur slopes SE. Descend over broken terrain.</p> <p>19.70 Enter road, dirt surface, bears SE. and NW.</p> <p>20.00 Point for Cor. No. 8, Lot No. 40, determined at proportionate distance by method of broken boundary adjustment, falls in road; there is no remaining evidence of the 1904 resurvey cor. position.</p> <p>Set a stainless steel post, 28 ins. long, 2½ ins. diam., 16 ins. below the surface of the ground, atop a plastic encased magnetic marker, with brass cap mkd.</p> <div style="text-align: center; margin: 10px 0;"> </div> <p>from which</p> <p style="margin-left: 40px;">A stainless steel post, 28 ins. long, 2½ ins. diam., set 26 ins. in the ground, for a reference monument, bears S. 1½° E., 83 lks. dist., with brass cap mkd. RM T55N R96W Cor. 8 Lot 40 55.0 ft. TO COR. 2011 and an arrow pointing to the cor. Set a steel fence post alongside the stainless steel post.</p> <p style="margin-left: 40px;">A stainless steel post, 28 ins. long, 2½ ins. diam., set 26 ins. in the ground, for a reference monument, bears S. 89¾° W., 84 lks. dist., with brass cap mkd. RM T55N R96W Cor. 8 Lot 40 55.7 ft. TO COR. 2011 and an arrow pointing to the cor. Set a steel fence post alongside the stainless steel post.</p> <p>Cor. is located in road, dirt surface, bears SE. and NW.</p> <p>Note: The position was reestablished utilizing Cor. No. 7, Lot No. 40 and the recovered evidence of the 1904 resurvey closing cor. of secs. 7 and 8 on</p>
---------------	--

Dependent Resurvey of a Portion of Lot No. 40,  
T. 55 N., R. 96 W., Sixth Principal Meridian, Wyoming

<p><b>Chains</b></p>	<p>line 8-9, Lot No. 40, as control. This method was deemed the most appropriate because the bearings and distances of the reestablished lines are in harmony with the 1904 record for these lines. Further, the retraced distance along the remainder of line 8-9, Lot No. 40, shows a small discrepancy in the reported 1904 distance for this portion of the line. This discrepancy is isolated outside of the broken boundary adjustment when the 1904 closing cor. is utilized as control for the reestablishment of Cor. No. 8, Lot No. 40.</p> <hr/> <p>S. 89° 56' W., on line 8-9, Lot No. 40.</p> <p>Ascend over rolling and rocky NE. slope of spur.</p> <p>0.30 Leave road, dirt surface, bears SE. and NW.</p> <p>5.91 The 1904 closing cor. of secs. 7 and 8 on line 8-9, Lot No. 40, monumented with a crumbling sandstone, 13 x 10 x 5 ins., firmly set 11 ins. in the ground, no mks. visible, with an embedded mound of stone S. of the cor. This position is accepted as the best available evidence of the 1904 resurvey cor. position and now functions as the point of intersection of the line bet. secs. 7 and 8 with line 8-9, Lot No. 40.</p> <p>At the corner point</p> <p>Set a stainless steel post, 28 ins. long, 2½ ins. diam., 24 ins. in the ground, atop a plastic encased magnetic marker, in a collar of stone, with brass cap mkd.</p> <div style="text-align: center;"> <p>T55N R96W Lot 40</p> <hr/> <p>S 7   S 8 C C 2011</p> </div> <p>Remove the embedded mound of stone to the collar of stone. Bury the unmarked stone and set a steel fence post alongside the stainless steel post.</p> <p>Note: This position was utilized as the best available evidence of the latitudinal location of line 8-9, Lot No. 40, and will now function as an angle point on this line. The decision to use this position as control for the restoration of Cor. No. 8, Lot No. 40, is noted in the description for said cor.</p> <hr/>
----------------------	--

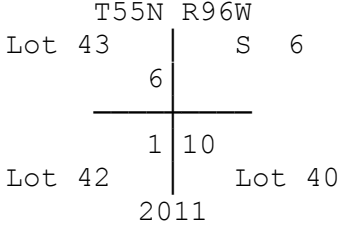
Dependent Resurvey of a Portion of Lot No. 40,  
T. 55 N., R. 96 W., Sixth Principal Meridian, Wyoming

<b>Chains</b>	<p>S. 89° 52' W., beginning new measurement.</p>
7.80	<p>Spur, narrow and rocky, slopes SE.; descend gently rolling SW. slope of spur.</p>
14.51	<p>Cor. No. 9, Lot No. 40, monumented with a sandstone, 22 x 7 x 4 ins., firmly set 18 ins. in the ground, plainly mkd. 9/40 on NE. face.</p> <p>At the corner point</p> <p>Set a stainless steel post, 28 ins. long, 2½ ins. diam., 26 ins. in the ground, atop a plastic encased magnetic marker, in a collar of stone, with brass cap mkd.</p> <div style="text-align: center;"> <p style="margin: 0;">T55N R96W</p> <p style="margin: 0;">Lot 40</p> <p style="margin: 0;">9</p> <p style="margin: 0;">S 7</p> <p style="margin: 0;">2011</p> </div> <p>Bury the 1904 resurvey cor. stone and set a steel fence post alongside the stainless steel post.</p> <hr style="width: 25%; margin: 10px auto;"/> <p>N. 1° 12' W., on line 9-10, Lot No. 40.</p> <p>Ascend over gently rolling SW. slope of spur.</p>
3.55	<p>Spur slopes SE.; descend steep and rocky slope of spur.</p>
10.00	<p>Terrain becomes nearly level.</p>
18.08	<p>Point of intersection with the E. and W. center line of the NE¼ of sec. 7, hereinafter described.</p>
19.96	<p>Cor. No. 2, Lot No. 42, on line 9-10, Lot No. 40, monumented with a sandstone, 24 x 8 x 8 ins., firmly set 15 ins. in the ground, plainly mkd. 2/42 on W. face. This position is filed in the Big Horn County Clerk's Office.</p> <p>At the corner point</p> <p>Set a stainless steel post, 28 ins. long, 2½ ins. diam., 26 ins. in the ground, atop a plastic encased magnetic marker, with brass cap mkd.</p>

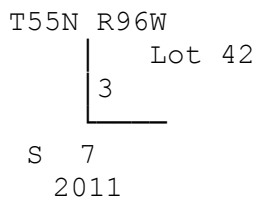
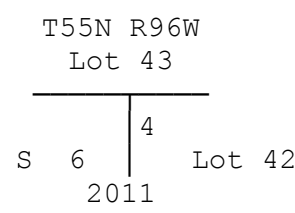
Dependent Resurvey of a Portion of Lot No. 40,  
T. 55 N., R. 96 W., Sixth Principal Meridian, Wyoming

Chains	
	<p>Bury the 1904 resurvey cor. stone and set a steel fence post alongside the stainless steel post.</p> <p>Cor. is located at angle point of abandoned fence extending N. and SE.</p> <hr style="width: 20%; margin: 10px auto;"/> <p>N. 1° 18' W., beginning new measurement, continuing along line 9-10, Lot No. 40, now identical with line 1-2, Lot No. 42.</p> <p>Over nearly level terrain along abandoned fence.</p>
2.10	Road, dirt surface, bears SE. and NW.
2.73	Intersection of abandoned fences bears N., SE. and S.
7.00	Canal, 30 lks. wide, drains SE.
13.41	Fence bears NE. and SW.
13.75	Road, dirt surface, bears NE. and SW.
18.90	Trail road bears E. and W., with ditch, 4 lks. wide, along S. edge of road, drains E., and irrigation ditch, 20 lks. wide, along N. edge of road, drains E.
19.88	Fence bears E. and W.
20.00	<p>Cor. No. 10, Lot No. 40, identical with Cor. No. 1, Lot No. 42 and Cor. No. 6, Lot No. 43, monumented by person(s) unknown with a bent and badly rusted steel reinforcement rod, ½ in. diam., 14 ins. long, firmly set 4 ins. below the surface of the ground. This position is accepted as the best available evidence of the 1904 resurvey cor. position.</p> <p>At the corner point</p>

Dependent Resurvey of a Portion of Lot No. 40,  
T. 55 N., R. 96 W., Sixth Principal Meridian, Wyoming

<p><b>Chains</b></p>	<p>Set a stainless steel post, 28 ins. long, 2½ ins. diam., 26 ins. in the ground, atop a plastic encased magnetic marker, with brass cap mkd.</p> <div style="text-align: center;">  </div> <p>Deposit the steel reinforcement rod inside and set a steel fence post alongside the stainless steel post.</p> <hr/> <p style="text-align: center;">Dependent Resurvey of Lot No. 42, T. 55 N., R. 96 W., Sixth Principal Meridian, Wyoming</p> <hr/> <p style="text-align: center;">(Restoring the survey executed by Walter E. Hoffman in 1904)</p> <hr/> <p>From Cor. No. 1, Lot No. 42, identical with Cor. No. 6, Lot No. 43 and Cor. No. 10, Lot No. 40.</p> <p>S. 1° 18' E., on line 1-2, Lot No. 42, identical in part with line 9-10, Lot No. 40.</p> <p>Note: Refer to the description of line 9-10, Lot No. 40, hereinbefore described, for topographic calls along this line.</p> <p>20.00 Cor. No. 2, Lot No. 42, on line 9-10, Lot No. 40, hereinbefore described.</p> <hr/> <p>N. 89° 57' W., on line 2-3, Lot No. 42.</p> <p>Ascend over gently sloping terrain.</p> <p>20.61 Cor. No. 3, Lot No. 42, monumented with a sandstone, 16 x 10 x 4 ins., firmly set 11 ins. in the ground, plainly mkd. 3/42 on NE. face, with an embedded mound of stone SW. of the cor. This position is filed in the Big Horn County Clerk's Office.</p> <p>At the corner point</p>
----------------------	---

Dependent Resurvey of Lot No. 42,  
T. 55 N., R. 96 W., Sixth Principal Meridian, Wyoming

<p><b>Chains</b></p>	<p>Set a stainless steel post, 28 ins. long, 2½ ins. diam., 23 ins. in the ground, atop a plastic encased magnetic marker, with brass cap mkd.</p> <div style="text-align: center;">  </div> <p>Remove the embedded mound of stone to the collar of stone. Bury the 1904 resurvey cor. stone and set a steel fence post alongside the stainless steel post.</p> <hr style="width: 20%; margin: 10px auto;"/> <p>N. 1° 10' W., on line 3-4, Lot No. 42.</p> <p>Descend over gently sloping terrain.</p> <p>1.23 Trail road, on curve, bears NE. and W.</p> <p>1.36 From this point, corner of barbed wire fence extending N. and W. bears WEST, 33 lks. dist. Converge with fence extending N.</p> <p>4.85 Trail road bears ESE. and WNW.</p> <p>18.095 Point of intersection of the line between secs. 6 and 7 with line 3-4, Lot No. 42, hereinafter described.</p> <p>19.97 Cor. No. 4, Lot No. 42, on line 6-7, Lot No. 43, monumented with a sandstone, 14 x 13 x 3 ins., firmly set 18 ins. below the surface of the ground, plainly mkd. 4/42 on SE. face.</p> <p>At the corner point</p> <p>Set a stainless steel post, 28 ins. long, 2½ ins. diam., 26 ins. in the ground, atop a plastic encased magnetic marker, with brass cap mkd.</p> <div style="text-align: center;">  </div>
----------------------	--

Dependent Resurvey of Lot No. 42,  
T. 55 N., R. 96 W., Sixth Principal Meridian, Wyoming

<b>Chains</b>	<p>Bury the 1904 resurvey cor. stone alongside the stainless steel post.</p> <p>Cor. is located 1.5 lks. E. of corner of barbed wire fence extending S. and W.</p> <hr style="width: 20%; margin: 10px auto;"/> <p>N. 89° 59' E., on line 4-1, Lot No. 42, identical in part with line 6-7, Lot No. 43.</p> <p>Over nearly level terrain.</p> <p>14.85 Canal, 50 lks. wide, from NW., drains SSE.</p> <p>15.38 Road, dirt surface, on curve, bears SSE. and NW.</p> <p>17.35 Barbed wire fence bears SSE. and NNW. at a point NNW., 13 lks. dist., from corner of same fence with barbed wire fence extending E.</p> <p>20.56 Cor. No. 1, Lot No. 42, identical with Cor. No. 6, Lot No. 43, and Cor. No. 10, Lot No. 40.</p> <hr style="width: 80%; margin: 20px auto;"/> <p style="text-align: center;">Dependent Resurvey of a Portion of the Twelfth Guide Meridian West, Through Township 55 North, Between Ranges 96 and 97 West, Sixth Principal Meridian, Wyoming</p> <hr style="width: 80%; margin: 20px auto;"/> <p style="text-align: center;">(Restoring the resurvey executed by Walter E. Hoffman in 1904)</p> <hr style="width: 20%; margin: 10px auto;"/> <p>From the cor. of secs. 7, 12, 13 and 18, monumented with a broken and deteriorating sandstone, 24 x 10 x 9 ins., firmly set 16 ins. in the ground, dimly mkd. 3 grooves on S. face, no other marks visible, with a mound of stone, 2 ft. base, 1½ ft. high, W. of the cor.</p> <p>At the corner point</p> <p>Set a stainless steel post, 28 ins. long, 2½ ins. diam., 16 ins. in the ground to bedrock, atop a plastic encased magnetic marker, in a supporting mound of stone, 5 ft. base, to top, with brass cap mkd.</p>
---------------	--

Dependent Resurvey of a Portion of the Twelfth Guide Meridian West,  
Through Township 55 North, Between Ranges 96 and 97 West,  
T. 55 N., R. 96 W., Sixth Principal Meridian, Wyoming

<b>Chains</b>	<div style="text-align: center; margin-bottom: 20px;"> <table style="margin: auto; border-collapse: collapse;"> <tr><td colspan="2">T55N</td></tr> <tr><td style="border-right: 1px solid black; padding: 2px 5px;">R97W</td><td style="padding: 2px 5px;">R96W</td></tr> <tr><td style="border-right: 1px solid black; padding: 2px 5px;">S 12</td><td style="padding: 2px 5px;">S 7</td></tr> <tr><td colspan="2" style="border-top: 1px solid black; border-bottom: 1px solid black;"></td></tr> <tr><td style="border-right: 1px solid black; padding: 2px 5px;">S 13</td><td style="padding: 2px 5px;">S 18</td></tr> <tr><td colspan="2">2011</td></tr> </table> </div> <p>Remove the mound of stone to the supporting mound of stone. Bury the 1904 resurvey cor. stone alongside the stainless steel post and set a steel fence post alongside the supporting mound.</p> <p>N. 0° 04' E., bet. secs. 7 and 12.</p> <p>Descend over broken terrain.</p> <p>15.00 Terrain becomes gently rolling.</p> <p>37.42 Barbed wire fence bears ENE. and WSW.</p> <p>40.00 The 1/4 sec. cor. of secs. 7 and 12, monumented by Gunnar B. Getchell, Wyoming Professional Land Surveyor No. 9785, with a steel reinforcement rod, 3/4 in. diam., 24 ins. long, firmly set 22 ins. in the ground, steel fence post set alongside, with aluminum cap mkd. MORRISON-MAIERLE INC. T55N 1/4 R97W R96W S 12 S 7 2004 LS 9785. This position, as filed in the Big Horn County Clerk's Office, is accepted as a careful and faithful perpetuation of the 1904 resurvey cor. position.</p> <p>At the corner point</p> <p>Set a stainless steel post, 28 ins. long, 2½ ins. diam., 26 ins. in the ground, atop a plastic encased magnetic marker, with brass cap mkd.</p> <div style="text-align: center; margin-bottom: 20px;"> <table style="margin: auto; border-collapse: collapse;"> <tr><td colspan="2">T55N</td></tr> <tr><td colspan="2">1/4</td></tr> <tr><td style="border-right: 1px solid black; padding: 2px 5px;">R97W</td><td style="padding: 2px 5px;">R96W</td></tr> <tr><td style="border-right: 1px solid black; padding: 2px 5px;">S 12</td><td style="padding: 2px 5px;">S 7</td></tr> <tr><td colspan="2">2011</td></tr> </table> </div> <p>Deposit the steel reinforcement rod inside and retain the set steel fence post alongside the stainless steel post.</p> <hr style="width: 20%; margin: 10px auto;"/> <p>N. 0° 07' E., beginning new measurement.</p>	T55N		R97W	R96W	S 12	S 7			S 13	S 18	2011		T55N		1/4		R97W	R96W	S 12	S 7	2011	
T55N																							
R97W	R96W																						
S 12	S 7																						
S 13	S 18																						
2011																							
T55N																							
1/4																							
R97W	R96W																						
S 12	S 7																						
2011																							

Dependent Resurvey of a Portion of the Twelfth Guide Meridian West,  
Through Township 55 North, Between Ranges 96 and 97 West,  
T. 55 N., R. 96 W., Sixth Principal Meridian, Wyoming

<b>Chains</b>	Over rolling terrain.																								
20.01	<p>Point for the N. 1/16 sec. cor. of secs. 7 and 12.</p> <p>Set a stainless steel post, 28 ins. long, 2½ ins. diam., 23 ins. in the ground, atop a plastic encased magnetic marker, with brass cap mkd.</p> <div style="text-align: center;"> <table style="border-collapse: collapse; margin: auto;"> <tr><td colspan="4">T55N</td></tr> <tr><td colspan="4">N 1/16</td></tr> <tr><td style="border-right: 1px solid black;">R97W</td><td></td><td style="border-right: 1px solid black;">R96W</td><td></td></tr> <tr><td style="border-right: 1px solid black;">S 12</td><td style="border-right: 1px solid black;"> </td><td style="border-right: 1px solid black;">S 7</td><td></td></tr> <tr><td colspan="4">2011</td></tr> </table> </div> <p>Set a steel fence post alongside the stainless steel post.</p>	T55N				N 1/16				R97W		R96W		S 12		S 7		2011							
T55N																									
N 1/16																									
R97W		R96W																							
S 12		S 7																							
2011																									
30.50	Trail road bears SE. and NW.																								
31.35	Irrigation ditch, 5 lks. wide, drains ESE.																								
40.02	<p>Point for the cor. of secs. 1, 6, 7 and 12, at proportionate distance; there is no remaining evidence of the 1904 resurvey cor. position.</p> <p>Set a stainless steel post, 28 ins. long, 2½ ins. diam., 22 ins. in the ground, atop a plastic encased magnetic marker, with brass cap mkd.</p> <div style="text-align: center;"> <table style="border-collapse: collapse; margin: auto;"> <tr><td colspan="4">T55N</td></tr> <tr><td style="border-right: 1px solid black;">R97W</td><td></td><td style="border-right: 1px solid black;">R96W</td><td></td></tr> <tr><td style="border-right: 1px solid black;">S 1</td><td style="border-right: 1px solid black;"> </td><td style="border-right: 1px solid black;">S 6</td><td></td></tr> <tr><td colspan="4" style="border-top: 1px solid black;"></td></tr> <tr><td style="border-right: 1px solid black;">S 12</td><td style="border-right: 1px solid black;"> </td><td style="border-right: 1px solid black;">S 7</td><td></td></tr> <tr><td colspan="4">2011</td></tr> </table> </div> <p>Raise a mound of stone, 3 ft. base, 2 ft. high, W. of the cor. and set a steel fence post alongside.</p> <p>From this point, the cor. of Tps. 55 and 56 N., Rs. 96 and 97 W., bears N. 0° 07' E., 80.04 chs. dist., monumented by Gunnar B. Getchell, Wyoming Professional Land Surveyor No. 9785, with a steel reinforcement rod, 5/8 in. diam., firmly set 4 ins. below the surface of county road, with aluminum cap mkd.</p>	T55N				R97W		R96W		S 1		S 6						S 12		S 7		2011			
T55N																									
R97W		R96W																							
S 1		S 6																							
S 12		S 7																							
2011																									

Dependent Resurvey of a Portion of the Twelfth Guide Meridian West,  
Through Township 55 North, Between Ranges 96 and 97 West,  
T. 55 N., R. 96 W., Sixth Principal Meridian, Wyoming

<b>Chains</b>	<p style="text-align: center;">MORRISON-MAIERLE INC.</p> <p style="text-align: center;">T56N</p> <table style="margin-left: auto; margin-right: auto; border-collapse: collapse;"> <tr> <td style="border-right: 1px solid black; padding: 0 5px;">R97W</td> <td style="padding: 0 5px;">R96W</td> </tr> <tr> <td style="border-right: 1px solid black; padding: 0 5px;">S 36</td> <td style="padding: 0 5px;">S 31</td> </tr> <tr> <td style="border-right: 1px solid black; padding: 0 5px;">S 1</td> <td style="padding: 0 5px;">S 6</td> </tr> </table> <p style="text-align: center;">T55N 2003 LS 9785</p> <p>This position, as filed in the Big Horn County Clerk's Office, is accepted as a careful and faithful reestablishment of the 1904 resurvey cor. position. Mr. Getchell states on his record that he reestablished this position by single proportionate measurement utilizing control N. and S. This method of restoration is acceptable in this case since the guide meridian was run continually through Tps. 55 and 56 N. in 1904. This control line was fully retraced and careful search was made for the intervening cor. which was not recovered.</p> <p>Cor. is located in Big Horn County Road Lane 15, extending E. and W.</p> <p>from this point</p> <p style="padding-left: 40px;">A stainless steel post, 28 ins. long, 2½ ins. diam., set 20 ins. in the ground, in a collar of stone, for a reference monument, bears S. 47½° E., 57 lks. dist., with brass cap mkd. RM T55N R96W S 6 37.8 ft. TO COR. 2011 and an arrow pointing to the cor. Monument is located 1.5 lks. N. of barbed wire fence extending E. and W.</p> <p style="padding-left: 40px;">A stainless steel post, 28 ins. long, 2½ ins. diam., set 22 ins. in the ground, for a reference monument, bears S. 46¼° W., 58 lks. dist., with brass cap mkd. RM T55N R97W S 1 38.0 ft. TO COR. 2011 and an arrow pointing to the cor. Monument is located 1 lk. N. of barbed wire fence extending E. and W.</p> <hr style="width: 60%; margin-left: auto; margin-right: auto;"/>	R97W	R96W	S 36	S 31	S 1	S 6
R97W	R96W						
S 36	S 31						
S 1	S 6						

Dependent Resurvey of a Portion of the Subdivisional Lines,  
T. 55 N., R. 96 W., Sixth Principal Meridian, Wyoming

Chains	
	<p>(Restoring the survey executed by Walter E. Hoffman in 1904)</p> <hr/>
	<p>From the 1/4 sec. cor. of secs. 17 and 18, monumented with a sandstone, 20 x 12 x 7 ins., firmly set 14 ins. in the ground, plainly mkd. 1/4 on the W. face, with a scattered mound of stone W. of the cor.</p>
	<p>At the corner point</p>
	<p>Set a stainless steel post, 28 ins. long, 2½ ins. diam., 23 ins. in the ground, atop a plastic encased magnetic marker, with brass cap mkd.</p>
	<p style="text-align: center;">T55N R96W 1/4 S 18   S 17 2012</p>
	<p>Bury the 1904 resurvey cor. stone alongside the stainless steel post, rehabilitate the scattered mound of stone, 2½ ft. base, 1½ ft. high, W. of the cor. and set a steel fence post alongside.</p>
	<p>N. 0° 06' E., bet. secs. 17 and 18.</p>
	<p>Over rolling and broken terrain.</p>
2.10	Gulch drains E.
18.20	Trail road, on curve, bears ENE. and SW.
34.15	Trail road bears ENE. and WSW.
39.60	Rocky edge of break bears E. and W. Descend over broken terrain.
39.67	Point for the 1904 witness cor. to the cor. of secs. 7, 8, 17 and 18, at proportionate distance, falls at base of rim rock on steep eroding slope; there is no remaining evidence of the resurvey cor. position. Point not monumented in favor of the hereinafter described position which is located in a more stable portion of the broken N. slope.
39.87	Point selected for the witness cor. to the cor. of secs. 7, 8, 17 and 18.

Dependent Resurvey of a Portion of the Subdivisional Lines,  
T. 55 N., R. 96 W., Sixth Principal Meridian, Wyoming

<p><b>Chains</b></p>	<p>Set a stainless steel post, 28 ins. long, 2½ ins. diam., 20 ins. in the ground, atop a plastic encased magnetic marker, in a collar of stone, with brass cap mkd.</p> <div style="text-align: center;"> <p style="margin: 0;">WC T55N R96W S 7   S 8 ----- S 18   S 17 2012</p> </div> <p>Raise a mound of stone, 3 ft. base, 1½ ft. high, W. of the cor. and set a steel fence post alongside.</p> <p>40.02 True point for the cor. of secs. 7, 8, 17 and 18 at proportionate distance; falls on edge of large rock outcrop on N. face of break W. of large boulder, where it is impracticable to establish a permanent monument.</p> <hr style="width: 60%; margin-left: auto; margin-right: auto;"/> <p>N. 89° 29' E., bet. secs. 8 and 17.</p> <p>Descend over broken N. slope of break.</p> <p>8.00 Leave broken terrain and continue over gently rolling terrain.</p> <p>20.60 Trail road bears NE. and SW.</p> <p>26.55 Road, dirt surface, bears SSE. and NNW.</p> <p>27.58 Intersection of the line between secs. 8 and 17 with line 3-4, Lot No. 39, identical with the 1904 resurvey closing cor., hereinbefore described.</p> <p>Note: The 1904 resurvey plat and field notes show the distance of this point at 27.59 chs., which is in harmony with the distance returned. As stated on page 1 of these field notes, an error was identified with the returned 1904 running distances along the remainder of this line. Therefore, the remainder of this line is written in the same manner as the 1904 field notes to report the discrepancies encountered as the line intersects line 1-2, Lot No. 39, and line 3-4, Lot No. 38.</p> <hr style="width: 60%; margin-left: auto; margin-right: auto;"/> <p>N. 89° 56' E., beginning new measurement, on a blank line through Lot No. 39.</p>
----------------------	---

Dependent Resurvey of a Portion of the Subdivisional Lines,  
T. 55 N., R. 96 W., Sixth Principal Meridian, Wyoming

<b>Chains</b>	<p>Continue over gently rolling terrain.</p> <p>1.95 Barbed wire fence bears NNE. and SSW. at a point SSW., 30 lks. dist., from intersection of same fence with barbed wire fence extending SE. and NW.</p> <p>2.33 Barbed wire fence bears SE. and NW. at a point SE., 43 lks. dist., from before mentioned intersection of fences extending SE., SSW. and NW.</p> <p>11.10 Wash, in bottom of Foster Gulch, drains N.</p> <p>12.38 Barbed wire fence bears ENE. and WSW.</p> <p>12.41 Point for the 1/4 sec. cor. of secs. 8 and 17 at record distance using the 1904 resurvey record. Point not monumented.</p> <p>Note: The 1904 field note record states that this line was run on the “true line” and reported a distance of 40.00 chs. at the 1/4 sec. cor. from the cor. of secs. 7, 8, 17 and 18. This position was computed longitudinally at record distance of 12.41 chs. dist. (40.00-27.59) from the last identifiable 1904 cor. position, that being the found closing cor. monument of secs. 8 and 17 on line 3-4, Lot No. 39. This method was deemed the most applicable to identify the location of the 1904 1/4 sec. cor. due to the returned error in the 1904 distance along this line.</p> <p>13.90 Road, dirt surface, bears ENE. and WSW.</p> <p>16.55 Road, dirt surface, on curve, bears S. and NW., with road, dirt surface, intersecting curve, bears NE.</p> <p>20.74 Point of intersection of the blank line between secs. 8 and 17 with line 1-2, Lot No. 39, determined at proportionate distance along line 1-2 of said Lot; there is no remaining evidence of the 1904 resurvey closing cor. position.</p> <p>Set a stainless steel post, 28 ins. long, 2½ ins. diam., 26 ins. in the ground, atop a plastic encased magnetic marker, in a collar of stone, with brass cap mkd.</p> <div style="text-align: center;"> <table style="border-collapse: collapse; margin: auto;"> <tr> <td style="padding-right: 10px;">T55N</td> <td style="padding-right: 10px;">R96W</td> <td></td> <td></td> </tr> <tr> <td></td> <td style="border-left: 1px solid black; border-right: 1px solid black; padding: 0 5px;">39</td> <td style="padding: 0 5px;">S</td> <td style="padding: 0 5px;">8</td> </tr> <tr> <td></td> <td style="border-left: 1px solid black; border-right: 1px solid black; padding: 0 5px;">107</td> <td style="border-top: 1px solid black; padding: 0 5px;">S</td> <td style="border-top: 1px solid black; padding: 0 5px;">17</td> </tr> <tr> <td></td> <td></td> <td></td> <td style="padding: 0 5px;">C</td> </tr> <tr> <td></td> <td></td> <td></td> <td style="padding: 0 5px;">C</td> </tr> <tr> <td></td> <td></td> <td></td> <td style="padding: 0 5px;">2011</td> </tr> </table> </div>	T55N	R96W				39	S	8		107	S	17				C				C				2011
T55N	R96W																								
	39	S	8																						
	107	S	17																						
			C																						
			C																						
			2011																						

Dependent Resurvey of a Portion of the Subdivisional Lines,  
T. 55 N., R. 96 W., Sixth Principal Meridian, Wyoming

<p><b>Chains</b></p>	<p>Set a steel fence post alongside the stainless steel post.</p> <p>From this point, Cor. No. 1, Lot No. 39, bears N. 0° 04' E., 1.76 chs. dist. and Cor. No. 2, Lot No. 39, bears S. 0° 04' W., 18.29 chs. dist., both hereinbefore described.</p> <p>Note: The 1904 plat and field notes state the running distance to this point of intersection as 47.33 chs. from the cor. of secs. 7, 8, 17 and 18. Subtracting the 1904 running distances upon entering and leaving Lot No. 39 returns a distance of 19.74 chs. (47.33-27.59) for the blank line. This distance is in disagreement with the 1904 platted distance of the blank line across Lot No. 39 of 20.76 chs. This distance is in harmony with the 1904 distances along line 4-1 and line 2-3 of Lot No. 39, which is to be expected with the configuration of Lot No. 39, but when added to the distance of the first portion of this line, 27.59 chs., results in a running distance to this point of 48.35 chs., not 47.33 chs. as stated in the 1904 field notes and shown on the plat.</p> <hr style="width: 20%; margin: 10px auto;"/> <p>EAST, beginning new measurement.</p> <p>Ascend steep and rocky NW. slope.</p> <p>3.15 Narrow ridge bears ENE. and WSW. Descend over rolling terrain.</p> <p>11.67 Point for the E. 1/16 sec. cor. of secs. 8 and 17, determined at record longitudinal distance from the intersection of the line bet. secs. 8 and 17 with line 3-4, Lot No. 39.</p> <p>Set a stainless steel post, 28 ins. long, 2½ ins. diam., 26 ins. in the ground, atop a plastic encased magnetic marker, in a collar of stone, with brass cap mkd.</p> <div style="text-align: center; margin: 10px 0;"> <p>T55N R96W</p> <p>S 8</p> <p>E 1/16 ———</p> <p>S 17</p> <p>2012</p> </div> <p>Set a steel fence post alongside the stainless steel post.</p> <p>Note: The 1904 field notes state that the line bet. secs. 8 and 17 was run on the “true line” and called for the 1/4 sec. cor. at 40.00 chs. Based on this, the interpreted intention for the location of the E. 1/16 sec. cor. would be at</p>
----------------------	---

Dependent Resurvey of a Portion of the Subdivisional Lines,  
T. 55 N., R. 96 W., Sixth Principal Meridian, Wyoming

<p><b>Chains</b></p>	<p>60.00 chs. from the sec. cor. Due to the error in running distance along the line bet. secs. 8 and 17, use of record distance was deemed the most appropriate to establish the cor. position. This position was determined 32.41 chs. (the 1904 record of 60.00-27.59) from the closest identified 1904 cor., that being the 1904 closing corner of secs. 8 and 17 on line 3-4, Lot No. 39. This method is further justified by the longitudinal location of the cor. being 59.99 chs. from the reestablished position of the cor. of secs. 7, 8, 17 and 18. Use of this position also returns acreages of lots within the SE. 1/4 of sec. 8 in harmony with those shown on the 1904 resurvey plat. Use of the 1904 running distances place the position of the E. 1/16 sec. cor. another 101 lks. to the east along this line, which, if used, does not return the acreages of Lots 3, 4 and 5 in sec. 8 as reported on the 1904 plat. Further, no improvements were noted in the area to show use of this position when Lot 3 was patented.</p> <p>15.20 Wash drains NNW. Ascend W. slope of ridge.</p> <p>20.87 Point of intersection of the line bet. secs. 8 and 17 with line 3-4, Lot No. 38. The 1904 closing cor. mound of stone, now scattered, is located W. of this position.</p> <p>Set a stainless steel post, 28 ins. long, 2½ ins. diam., 26 ins. in the ground, atop a plastic encased magnetic marker, with brass cap mkd.</p> <div style="text-align: center;"> <p>T55N R96W</p> <table style="border-collapse: collapse; margin: auto;"> <tr> <td style="padding: 0 5px;">C</td> <td style="padding: 0 5px;">S</td> <td style="padding: 0 5px;">8</td> <td style="border-left: 1px solid black; padding: 0 5px;">38</td> </tr> <tr> <td style="padding: 0 5px;">C</td> <td style="padding: 0 5px;">S</td> <td style="padding: 0 5px;">17</td> <td style="border-left: 1px solid black; padding: 0 5px;">101</td> </tr> </table> <p>2011</p> </div> <p>Rehabilitate the scattered mound of stone, 2 ft. base, 1½ ft. high, in place, and set a steel fence post alongside the stainless steel post.</p> <p>Cor. is located atop wide, flat top of ridge, bears N. and S.</p> <p>From this point, Cor. No. 3, Lot No. 38, bears S. 0° 08' W., 78.26 chs. dist., and Cor. No. 4, Lot No. 38, bears N. 0° 08' E., 1.69 chs. dist., both hereinbefore described.</p> <p>20.89 The 1904 resurvey closing cor. of secs. 8 and 17, on line 3-4, Lot No. 38, monumented with a sandstone, 21 x 10 x 8 ins., firmly set 17 ins. in the ground, plainly mkd. 38 on E. face, 4 grooves on S. face and CC on W. face,</p>	C	S	8	38	C	S	17	101
C	S	8	38						
C	S	17	101						

Dependent Resurvey of a Portion of the Subdivisional Lines,  
T. 55 N., R. 96 W., Sixth Principal Meridian, Wyoming

<b>Chains</b>	<p>with the before mentioned scattered mound of stone W. of the true cor. position. Add the mks. AM and bury, in place, 3 ins. below the surface of the ground.</p> <p>Note: The 1904 plat and field notes both state the running distance of the line to this point to be 68.19 chs. Subtracting the 1904 distance returned at this point (68.19 chs.) from the 1904 distance at the intersection of the E. line of Lot No. 39 (47.33 chs.) results in a distance of 20.86 chs., which is in harmony with the 2011-12 returned distance for this portion of the line. With this relationship, this portion of the line was measured correctly, which in turn shows that the error in the running distances was started while on the blank line across Lot No. 39 in 1904.</p> <hr style="width: 50%; margin-left: auto; margin-right: auto;"/> <p>From the cor. of secs. 7, 8, 17 and 18.</p> <p>S. 89° 59' W., bet. secs. 7 and 18.</p> <p>Over broken N. slope of break.</p> <p>28.70 Ridge bears N. and S. Descend over rolling terrain.</p> <p>39.98 The 1/4 sec. cor. of secs. 7 and 18, monumented with a sandstone, 19 x 15 x 3 ins., firmly set 19 ins. in the ground, plainly mkd. 1/4 on N. face, with a scattered mound of stone N. of the cor.</p> <p>At the corner point</p> <p>Set a stainless steel post, 28 ins. long, 2½ ins. diam., 26 ins. in the ground, atop a plastic encased magnetic marker, in a collar of stone, with brass cap mkd.</p> <div style="text-align: center; margin: 10px 0;"> <p>T55N R96W</p> <p>S 7</p> <p>1/4 ———</p> <p>S 18</p> <p>2011</p> </div> <p>Remove the scattered mound of stone to the collar of stone. Bury the 1904 resurvey cor. stone and set a steel fence post alongside the stainless steel post.</p> <hr style="width: 50%; margin-left: auto; margin-right: auto;"/> <p>S. 89° 55' W., beginning new measurement.</p>
---------------	---

Dependent Resurvey of a Portion of the Subdivisional Lines,  
T. 55 N., R. 96 W., Sixth Principal Meridian, Wyoming

<b>Chains</b>	<p>Descend over rolling terrain.</p>
29.10	Gulch drains N. Ascend rolling and broken terrain.
39.10	<p>The cor. of secs. 7, 12, 13 and 18, on the W. bdy. of the Tp.</p> <hr/> <p>From the cor. of secs. 7, 8, 17 and 18.</p> <p>N. 0° 01' W., bet. secs. 7 and 8.</p> <p>Descend over broken N. slope of break.</p>
1.70	Bottom of steep descent. Thence over gently rolling terrain.
16.30	Trail road, on curve, bears ESE. and NW.
36.70	Spur slopes SE. Descend gradually over broken terrain.
40.02	<p>The 1/4 sec. cor. of secs. 7 and 8, monumented with a sandstone, 19 x 14 x 7 ins., firmly set 12 ins. in the ground, illegibly mkd. on W. face, with mound of stone, 2 ft. base, 2 ft. high, W. of the cor. This is accepted as the best available evidence of the 1904 resurvey cor. position.</p> <p>At the corner point</p> <p>Set a stainless steel post, 28 ins. long, 2½ ins. diam., 20 ins. in the ground, atop a plastic encased magnetic marker, in a collar of stone, with brass cap mkd.</p> <div style="text-align: center;"> <p>T55N R96W</p> <p>1/4</p> <p>S 7   S 8</p> <p>2011</p> </div> <p>Bury the stone and set a steel fence post alongside the stainless steel post, and retain the mound of stone W. of the cor.</p> <hr/> <p>N. 0° 08' E., beginning new measurement.</p> <p>Continue gradual descent over broken terrain.</p>

Dependent Resurvey of a Portion of the Subdivisional Lines,  
T. 55 N., R. 96 W., Sixth Principal Meridian, Wyoming

Chains	
1.95	<p>Intersection of the line bet. secs. 7 and 8 with line 8-9, Lot No. 40, identical with the 1904 resurvey closing cor. hereinbefore described.</p> <hr style="width: 50%; margin-left: 0;"/> <p>From the cor. of secs. 1, 6, 7 and 12, on the W. bdy. of the Tp. N. 89° 56' E., bet. secs. 6 and 7.  Over gently rolling terrain.</p>
1.50	Barbed wire fence bears SSE. and NNW.
2.80	Trail road along western edge of leveled field, bears SSE. and NNW.; thence over field.
15.15	Road, dirt surface, along eastern edge of field, bears NNE. and SSW.
18.96	<p>Point for the W. 1/16 sec. cor. of secs. 6 and 7.</p> <p>Set a stainless steel post, 28 ins. long, 2½ ins. diam., 26 ins. in the ground, atop a plastic encased magnetic marker, with brass cap mkd.</p> <div style="text-align: center; margin: 10px 0;"> <p>T55N R96W S 6 W 1/16 ——— S 7 2011</p> </div> <p>Set a steel fence post alongside the stainless steel post.</p>
22.10	Enter cultivated field, bears NNE. and SSW.; thence over gently sloping field.
39.05	Point for the 1/4 sec. cor. of secs. 6 and 7 at proportionate distance, falls in cultivated field; there is no remaining evidence of the 1904 resurvey cor. position. Point not monumented per request of the landowner.
43.00	Barbed wire fence bears N. and S. Leave field.
43.03	Point of intersection of the line bet. secs. 6 and 7, with line 3-4, Lot No. 42, at proportionate distance along line 3-4 of said Lot; there is no remaining evidence of the 1904 resurvey closing cor. position.

Dependent Resurvey of a Portion of the Subdivisional Lines,  
T. 55 N., R. 96 W., Sixth Principal Meridian, Wyoming

<p><b>Chains</b></p>	<p>Set a stainless steel post, 28 ins. long, 2½ ins. diam., 25 ins. in the ground, atop a plastic encased magnetic marker, with brass cap mkd.</p> <div style="text-align: center;"> <table border="0"> <tr> <td></td> <td>T55N</td> <td>R96W</td> <td></td> </tr> <tr> <td>C</td> <td>S</td> <td>6</td> <td rowspan="2"> </td> </tr> <tr> <td>C</td> <td>S</td> <td>7</td> </tr> <tr> <td></td> <td></td> <td></td> <td>LOT 42</td> </tr> <tr> <td></td> <td></td> <td></td> <td>2011</td> </tr> </table> </div> <p>Set a steel fence post alongside the stainless steel post.</p> <p>From this point, Cor. No. 3, Lot No. 42, bears S. 1° 10' E., 18.095 chs. dist., and Cor. No. 4, Lot No. 42, bears N. 1° 10' W., 1.875 chs. dist., both hereinbefore described.</p> <hr/> <p style="text-align: center;">Subdivision of Section 7, T. 55 N., R. 96 W., Sixth Principal Meridian, Wyoming</p> <hr/> <p>From the 1/4 sec. cor. of secs. 7 and 18.</p> <p>N. 0° 04' E., on the N. and S. center line of sec. 7.</p> <p>Over rolling and broken terrain.</p> <p>10.00      Terrain changes to gently rolling.</p> <p>35.50      Trail road bears ESE. and WNW.</p> <p>39.99      Point for the center 1/4 sec. cor. of sec. 7, at intersection with the E. and W. center line.</p> <p>Set a stainless steel post, 28 ins. long, 2½ ins. diam., 26 ins. in the ground, atop a plastic encased magnetic marker, with brass cap mkd.</p> <div style="text-align: center;"> <table border="0"> <tr> <td></td> <td>T55N</td> <td>R96W</td> </tr> <tr> <td></td> <td>C 1/4 S</td> <td>7</td> </tr> <tr> <td></td> <td></td> <td>2011</td> </tr> </table> </div> <p>Set a steel fence post alongside the stainless steel post.</p>		T55N	R96W		C	S	6		C	S	7				LOT 42				2011		T55N	R96W		C 1/4 S	7			2011
	T55N	R96W																											
C	S	6																											
C	S	7																											
			LOT 42																										
			2011																										
	T55N	R96W																											
	C 1/4 S	7																											
		2011																											

Subdivision of Section 7,  
T. 55 N., R. 96 W., Sixth Principal Meridian, Wyoming

Chains	
60.00	<p>Point for the center N. 1/16 sec. cor. of sec. 7.</p> <p>Set a stainless steel post, 28 ins. long, 2½ ins. diam., 26 ins. in the ground, atop a plastic encased magnetic marker, with brass cap mkd.</p> <p style="text-align: center;">T55N R96W C N 1/16   S 7 C 2011</p> <p>Set a steel fence post alongside the stainless steel post.</p>
62.50	Trail road bears ENE. and WSW.
63.02	Barbed wire fence bears ENE. and WSW. Descend over gently sloping cultivated fields.
80.01	<p>The point for the 1/4 sec. cor. of secs. 6 and 7.</p> <hr style="width: 60%; margin-left: 0;"/> <p>From the 1/4 sec. cor. of secs. 7 and 8.</p> <p>S. 89° 56' W., on the E. and W. center line of sec. 7.</p> <p>Ascend over broken NE. slope of spur.</p>
4.90	Spur slopes SE.; thence over gently rolling terrain.
39.92	The center 1/4 sec. cor. of sec. 7.
53.70	Trail road bears ESE. and WNW.
56.80	Trail road bears N. and S.
57.95	Barbed wire fence bears N. and S.
59.97	<p>Point for the center W. 1/16. sec. cor. of sec 7.</p> <p>Set a stainless steel post, 28 ins. long, 2½ ins. diam., 26 ins. in the ground, atop a plastic encased magnetic marker, with brass cap mkd.</p>

Subdivision of Section 7,  
T. 55 N., R. 96 W., Sixth Principal Meridian, Wyoming

Chains	
	<p style="text-align: center;">T55N R96W W 1/16 C ——— C S 7 2011</p>
79.01	<p>Set a steel fence post alongside the stainless steel post.</p> <p>The 1/4 sec. cor. of secs. 7 and 12, on the W. bdy. of the Tp.</p> <hr style="width: 60%; margin-left: 0;"/>
	<p>From the center N. 1/16 sec. cor. of sec. 7.</p> <p>N. 89° 56' E., on a weighted mean bearing, on the E. and W. center line of the fractional NE1/4 of sec. 7.</p> <p>Over rolling terrain.</p>
8.00	<p>Terrain becomes nearly level.</p>
25.02	<p>Point for the subdivision of sec. cor. at intersection of the E. and W. center line of the NE1/4 of sec. 7 with line 9-10, Lot No. 40.</p> <p>Set a stainless steel post, 28 ins. long, 2½ ins. diam., 26 ins. in the ground, atop a plastic encased magnetic marker, with brass cap mkd.</p>
	<p style="text-align: center;">T55N R96W CC   LOT 40 N ——— N S 7   2011</p>
	<p>Set a steel fence post alongside the stainless steel post.</p> <p>From this point, Cor. No. 9, Lot No. 40, bears S. 1° 12' E., 18.08 chs. dist., and Cor. No. 2, Lot No. 42, on line 9-10, Lot No. 40, bears N. 1° 12' W., 1.88 chs. dist., both hereinbefore described.</p> <hr style="width: 60%; margin-left: 0;"/>
	<p>From the center W. 1/16 sec. cor. of sec. 7.</p> <p>NORTH, on the N. and S. center line of the NW1/4 of sec. 7.</p>

Subdivision of Section 7,  
T. 55 N., R. 96 W., Sixth Principal Meridian, Wyoming

<b>Chains</b>	Over gently rolling terrain.
19.15	Trail road, on curve, bears SE. and NNW.
20.01	Point for the NW. 1/16 sec. cor. of sec. 7, at intersection with the E. and W. center line of the NW1/4.  Set a stainless steel post, 28 ins. long, 2½ ins. diam., 26 ins. in the ground, atop a plastic encased magnetic marker, with brass cap mkd.  <div style="text-align: center;">T55N R96W NW 1/16 S 7 2011</div> Set a steel fence post alongside the stainless steel post.
20.21	Barbed wire fence bears ESE. and WNW.
21.30	Enter cultivated field, bears E. and W.
32.50	Leave field, bears E. and WSW.
40.02	The W. 1/16 sec. cor. of secs. 6 and 7.  <hr style="width: 50%; margin-left: 0;"/> From the center N. 1/16 sec. cor. of sec. 7.  S. 89° 56' W., on the E. and W. center line of the NW1/4 of sec. 7.  Over gently rolling terrain.
15.00	Trail road bears ENE. and WSW.
16.78	Barbed wire fence bears ENE. and WSW. at a point ENE., 70 lks. dist., from corner of same fence with barbed wire fence extending WNW.
18.78	Barbed wire fence bears ESE. and WNW. at a point ESE., 54 lks. dist., from intersection of same fence with barbed wire fences extending S. and WNW.
19.31	Barbed wire fence bears N. and S. at a point S., 8 lks. dist., from hereinbefore mentioned intersection of barbed wire fences extending ESE., S. and WNW.

Subdivision of Section 7,  
T. 55 N., R. 96 W., Sixth Principal Meridian, Wyoming

<b>Chains</b>	
20.07	The NW. 1/16 sec. cor. of sec. 7.
20.45	Trail road bears SSE. and NNW.
32.85	Irrigation ditch, 5 lks. wide, drains SSE.
33.30	Trail road bears SSE. and NNW.
39.07	The N. 1/16 sec. cor. of secs. 7 and 12, on the W. bdy. of the Tp.
	<hr/> <p><b>GENERAL DESCRIPTION</b></p> <p>The area embraced by this survey is situated in the northwest portion of Big Horn County, approximately 3.5 miles SE. of Byron, Wyoming. The terrain varies from nearly level to rough and broken with an elevation of about 4200 feet above sea level. The soil is primarily sand, clay and rocky, with areas of sandy loam. Vegetation consists of sparse sagebrush and native grasses, with dense brush along Foster Gulch.</p> <p>Drainage is primarily by Foster Gulch which drains northerly through sections 8 and 17, and Lot No. 40. Numerous other drainages drain northerly throughout the area as well. The majority of the area is suitable for grazing and is utilized for that purpose. The remainder of the area has been leveled and is cultivated. No residences or oil and gas development was noted in the area surveyed.</p> <p>Access is provided by Wyoming State Hwy. No. 32 to Big Horn County Road Lane 15. Additional roads and trail roads allow access to the remainder of the area.</p> <hr/>

**UNITED STATES  
DEPARTMENT OF THE INTERIOR  
BUREAU OF LAND MANAGEMENT**

**FIELD ASSISTANTS**

NAMES	CAPACITY
Jason C. Moody	Survey Technician
Lee T. Wilson	Survey Technician
Kristina L. Jacob	Survey Technician

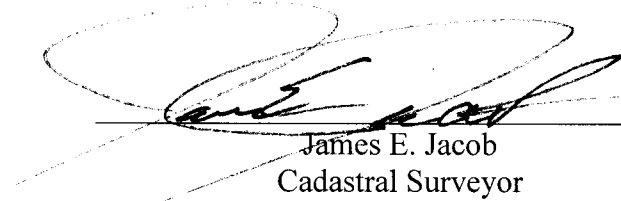
## CERTIFICATE OF SURVEY

I, James E. Jacob, Cadastral Surveyor, HEREBY CERTIFY upon honor that, in pursuance of Special Instructions bearing date of the 26th day of May, 2011, I have dependently resurveyed Lot No. 39 and Lot No. 42, a portion of Lot No. 38 and Lot No. 40, a portion of the Twelfth Guide Meridian West, through Township 55 North, between Ranges 96 and 97 West, a portion of the subdivisional lines, and subdivided section 7, Township 55 North, Range 96 West, of the Sixth Principal Meridian, in the State of Wyoming, which are represented in the foregoing field notes as having been executed by me and under my direction; and that said survey has been made in strict conformity with said Special Instructions, the Manual of Instructions for the Survey of the Public Lands of the United States, and in specific manner described in the foregoing field notes.

November 14, 2012

---

 Date




---

 James E. Jacob  
 Cadastral Surveyor

## CERTIFICATE OF APPROVAL

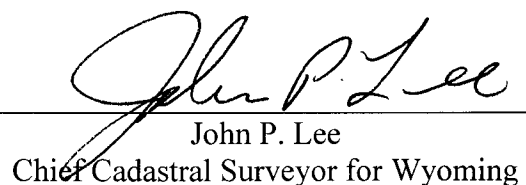
BUREAU OF LAND MANAGEMENT  
 Cheyenne, Wyoming

The foregoing field notes of the dependent resurvey of Lot No. 39 and Lot No. 42, a portion of Lot No. 38 and Lot No. 40, a portion of the Twelfth Guide Meridian West, through Township 55 North, between Ranges 96 and 97 West, a portion of the subdivisional lines, and the survey of the subdivision of section 7, Township 55 North, Range 96 West, Sixth Principal Meridian, Wyoming, executed by James E. Jacob, Cadastral Surveyor, having been critically examined and found correct, are hereby approved.

November 14, 2012

---

 Date




---

 John P. Lee  
 Chief Cadastral Surveyor for Wyoming