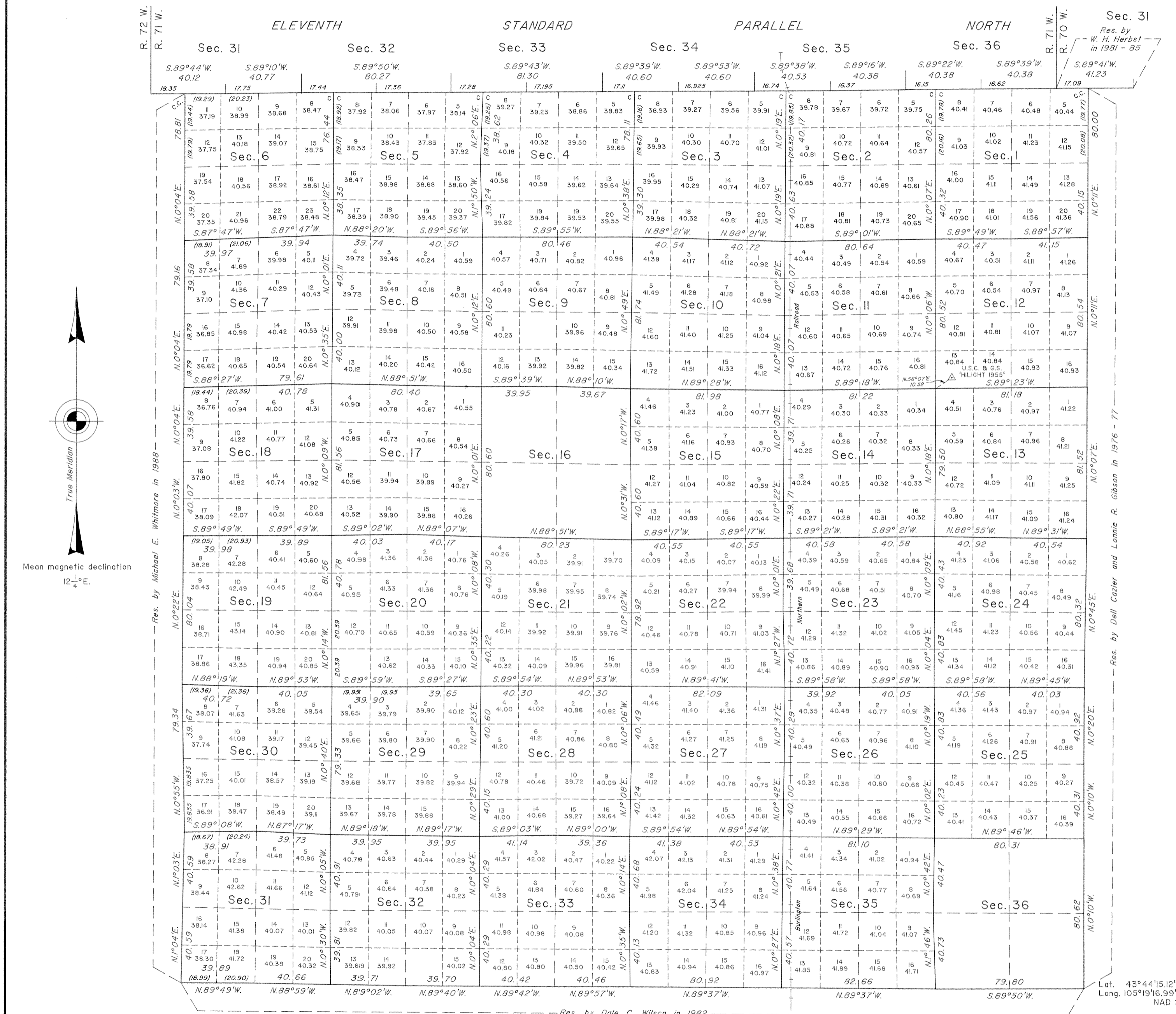


T. 44 N., R. 71 W., Sixth Principal Meridian, Wyoming, Field Note Links

Plat Accession Number(s)	Year(s) of Survey	
		Township Subdivision Plats
7964	1990	https://www.wy.blm.gov/cadastral/countyplats/campbell/fieldnotes/t44nr71w_gp534fn.pdf
1338	1882	https://www.wy.blm.gov/cadastral/countyplats/campbell/fieldnotes/t44nr71w_c142fn.pdf
		Township Exterior Plats
1339	1882	https://www.wy.blm.gov/cadastral/countyplats/converse/fieldnotes/ext0986.pdf
1339	1882	https://www.wy.blm.gov/cadastral/countyplats/converse/fieldnotes/retext0986.pdf

TOWNSHIP 44 NORTH, RANGE 71 WEST, OF THE SIXTH PRINCIPAL MERIDIAN, WYOMING.

DEPENDENT RESURVEY



A history of surveys is contained in the field notes.

This plat represents the dependent resurvey of the Eleventh Standard Parallel North, through R. 71 W., and the subdivisional lines designed to restore the corners in their true original locations according to the best available evidence, T. 44 N., R. 71 W., Sixth Principal Meridian, Wyoming.

Certain modified lots and areas shown hereon pertain to Federal interest estate only. Except as indicated hereon, the lottings and areas are shown on the plat approved October 25, 1882.

Survey executed by Joel T. Ebner, Cadastral Surveyor, beginning May 7, 1990, and completed July 17, 1990, pursuant to Special Instructions dated March 27, 1990, for Group No. 534, Wyoming.

UNITED STATES DEPARTMENT OF THE INTERIOR
BUREAU OF LAND MANAGEMENT

Cheyenne, Wyoming July 29, 1993

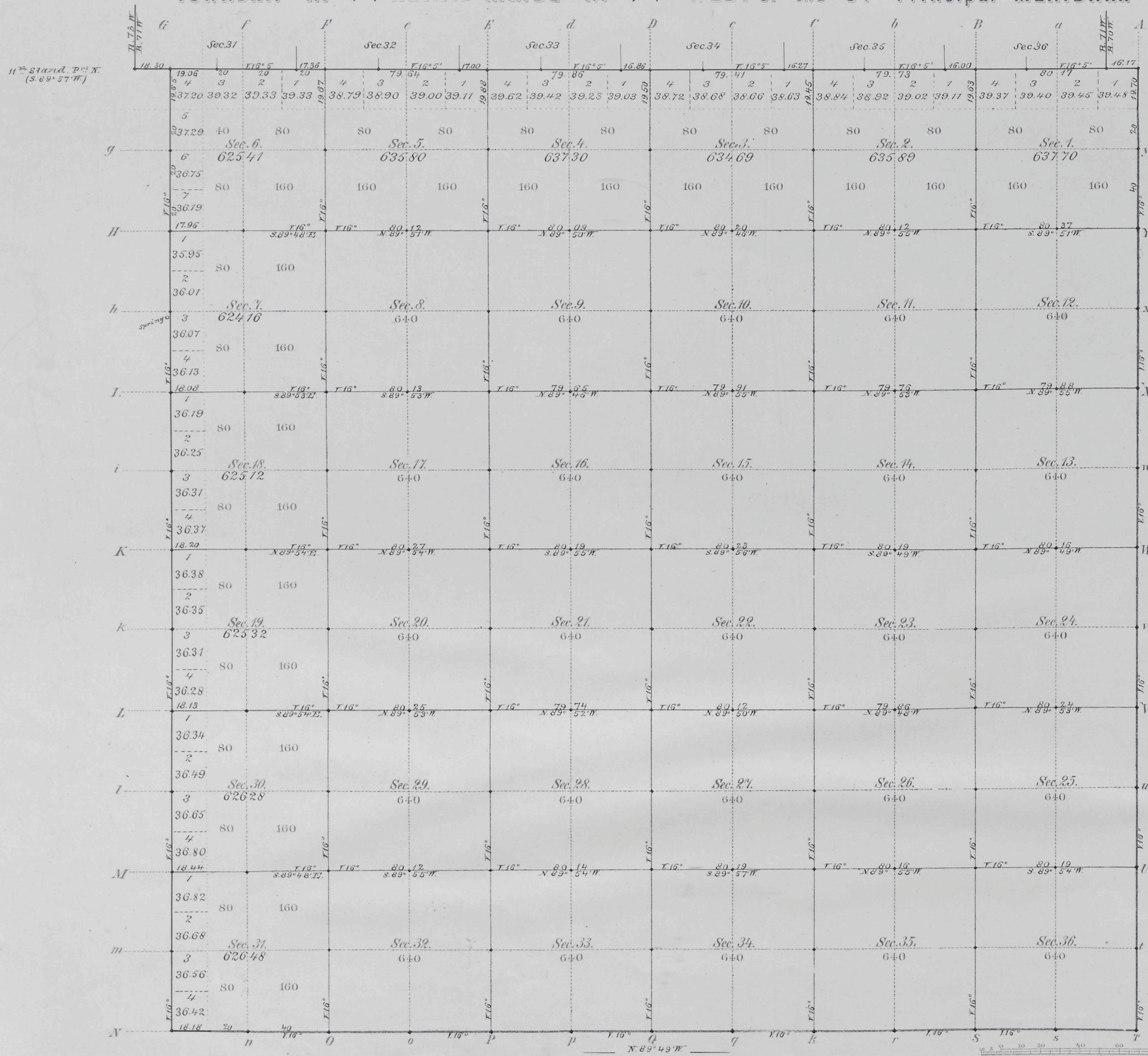
This plat is strictly conformable to the approved field notes, and the survey, having been correctly executed in accordance with the requirements of law and the regulations of this Bureau, is hereby accepted.

For the Director
John P. Lee
Chief Cadastral Surveyor for Wyoming

W.H.B.

1338

TOWNSHIP NO 44 NORTH. RANGE NO 71 WEST of the 6TH Principal MERIDIAN.



Total number of Acres. 22,934.15

Surveys Designated	By Whom Surveyed	Date of Contract	Amount of Surveys M ² C ² A ²	When Surveyed	Magnetic Declination
E. S. & W. Township lines	G. M. Carrington	Octob. 27, 1881	17 77 53	May 15, 23 Feb 4, 1882	16° East
Subdivisions	"	"	59 71 22	Sept. 8-14, 1882	16° "
Connections	"	"	1 3 49	"	"
11 th Standard P ² X	A. P. Harrison	Octob. 25, 1881	5 77 87	April 3 & 4, 1882	"

The above Map of Township No. 44 North of Range No. 71 West of the Sixth Principal Meridian Wyoming Territory is strictly conformable to the field notes of the survey thereof on file in this Office, which have been examined and approved

Surveyor General's Office,
Cheyenne Wyoming
October 23rd 1882

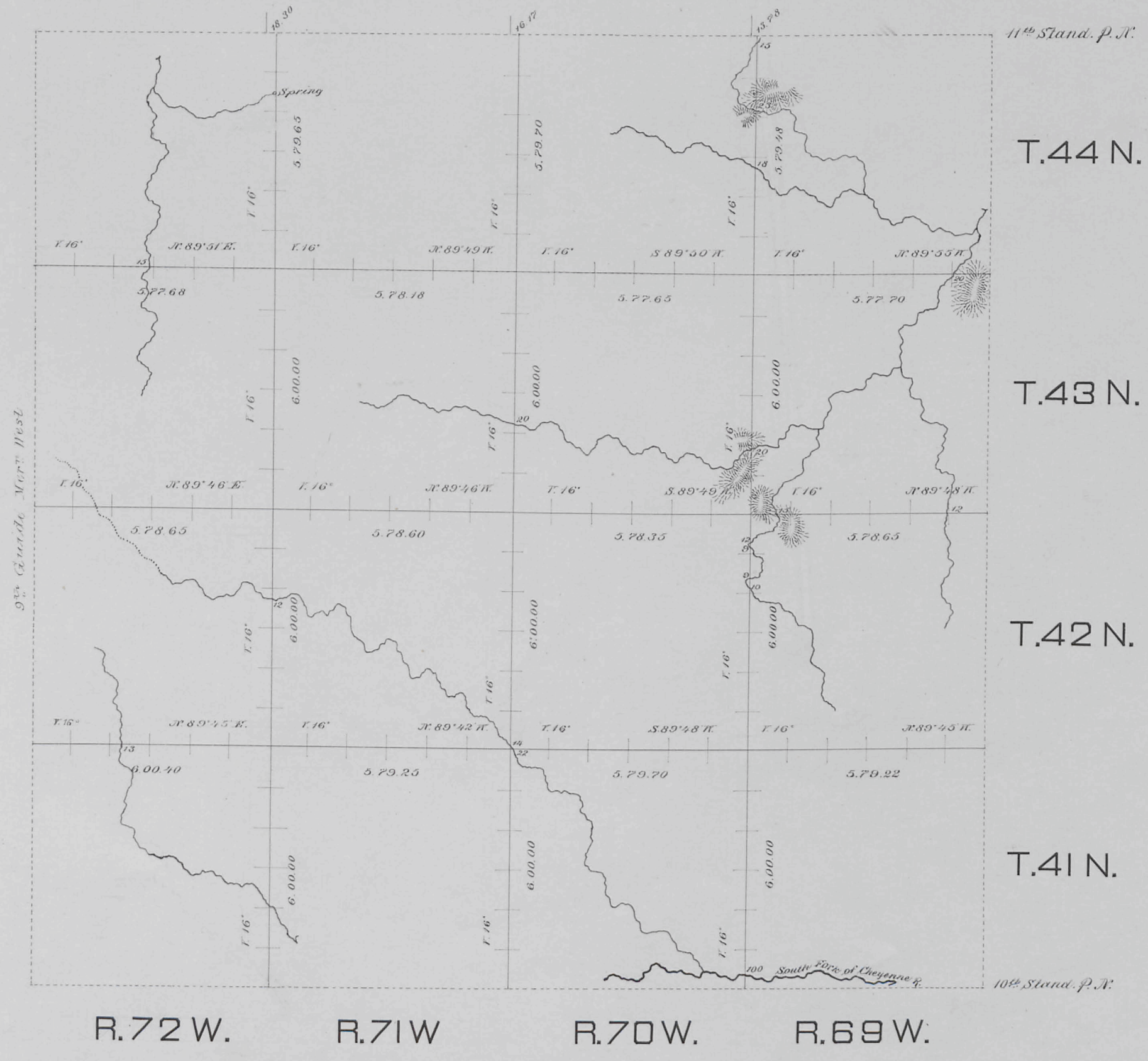
Edw. C. David
Genl.

(15)
Index

Accession no. 1539

EXTERIOR LINES.

Scale, 3 miles to an inch. Magnetic Variation East.



Surveys Designated.	By Whom Surveyed.	Date of Contract.	Amount of Surveys. Mts. Chs. Lks.	When Surveyed.
Exteriors	G. M. Carson	Oct. 27, 1881	43 62 86	May 3-24, 1882.
Connections	" " "	" " "	18 25	" " "

I hereby certify that the above diagram of the exterior lines of Townships T. 41, 42, 43, and 44 North, Ranges R. 69, 70, 71, and 72 West of the Sixth Principal Meridian, Wyoming Territory, is strictly conformable to the field notes of the survey thereof on file in this office, which have been examined and approved.

Surveyor General's Office,
Cheyenne Wyo.
Dec. 5. a. m. 25th 1882.

Edw. C. David
Surveyor General