

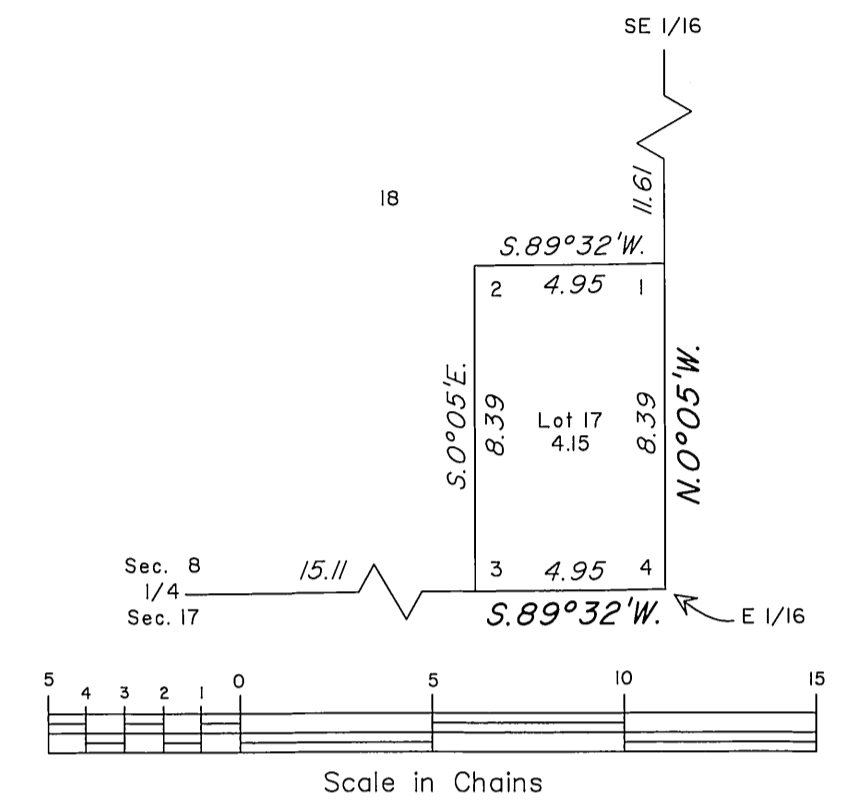
T. 56 N., R. 73 W., Sixth Principal Meridian, Wyoming, Field Note Links

Plat Accession Number(s)	Year(s) of Survey	
		Township Subdivision Plats
8587	2011-12	https://www.wy.blm.gov/cadastral/countyplats/campbell/fieldnotes/t56nr73w_gp836fn.pdf
8360	2001	https://www.wy.blm.gov/cadastral/countyplats/campbell/fieldnotes/t56nr73w_gp686fn.pdf
2342; 2343; 2344; 2345	1922	https://www.wy.blm.gov/cadastral/countyplats/campbell/fieldnotes/t56nr73w_gp057fn.pdf
2342; 2343; 2344; 2345	1922	https://www.wy.blm.gov/cadastral/countyplats/campbell/fieldnotes/t56nr73w_gp057fn_bnd.pdf
2341	1883	https://www.wy.blm.gov/cadastral/countyplats/campbell/fieldnotes/t56nr73w_c197fn.pdf
		Township Exterior Plats
2360	1883	https://www.wy.blm.gov/cadastral/countyplats/campbell/fieldnotes/ext2360.pdf
2360	1883	https://www.wy.blm.gov/cadastral/countyplats/campbell/fieldnotes/retext1680.pdf
2248	1882	https://www.wy.blm.gov/cadastral/countyplats/campbell/fieldnotes/ext2248.pdf
2248	1882	https://www.wy.blm.gov/cadastral/countyplats/campbell/fieldnotes/retext1634.pdf

TOWNSHIP 56 NORTH, RANGE 73 WEST, OF THE SIXTH PRINCIPAL MERIDIAN, WYOMING.

DEPENDENT RESURVEY, SUBDIVISION OF SECTION 8 AND METES AND BOUNDS SURVEY

DETAIL "A"



A history of surveys is contained in the field notes.

This plat represents the dependent resurvey of a portion of the subdivisional lines designed to restore the corners in their true original locations according to the best available evidence, the survey of the subdivision of section 8 and the metes and bounds survey of Lot 17, section 8, T. 56 N., R. 73 W., Sixth Principal Meridian, Wyoming.

Except as indicated hereon, the lotting and areas are as shown on the plat accepted December 31, 2002.

Survey executed by James E. Jacob, Cadastral Surveyor, beginning February 16, 2011, and completed July 23, 2012, pursuant to Special Instructions and Assignment Instructions dated January 6, 2011, for Group No. 836, Wyoming.

UNITED STATES DEPARTMENT OF THE INTERIOR
BUREAU OF LAND MANAGEMENT

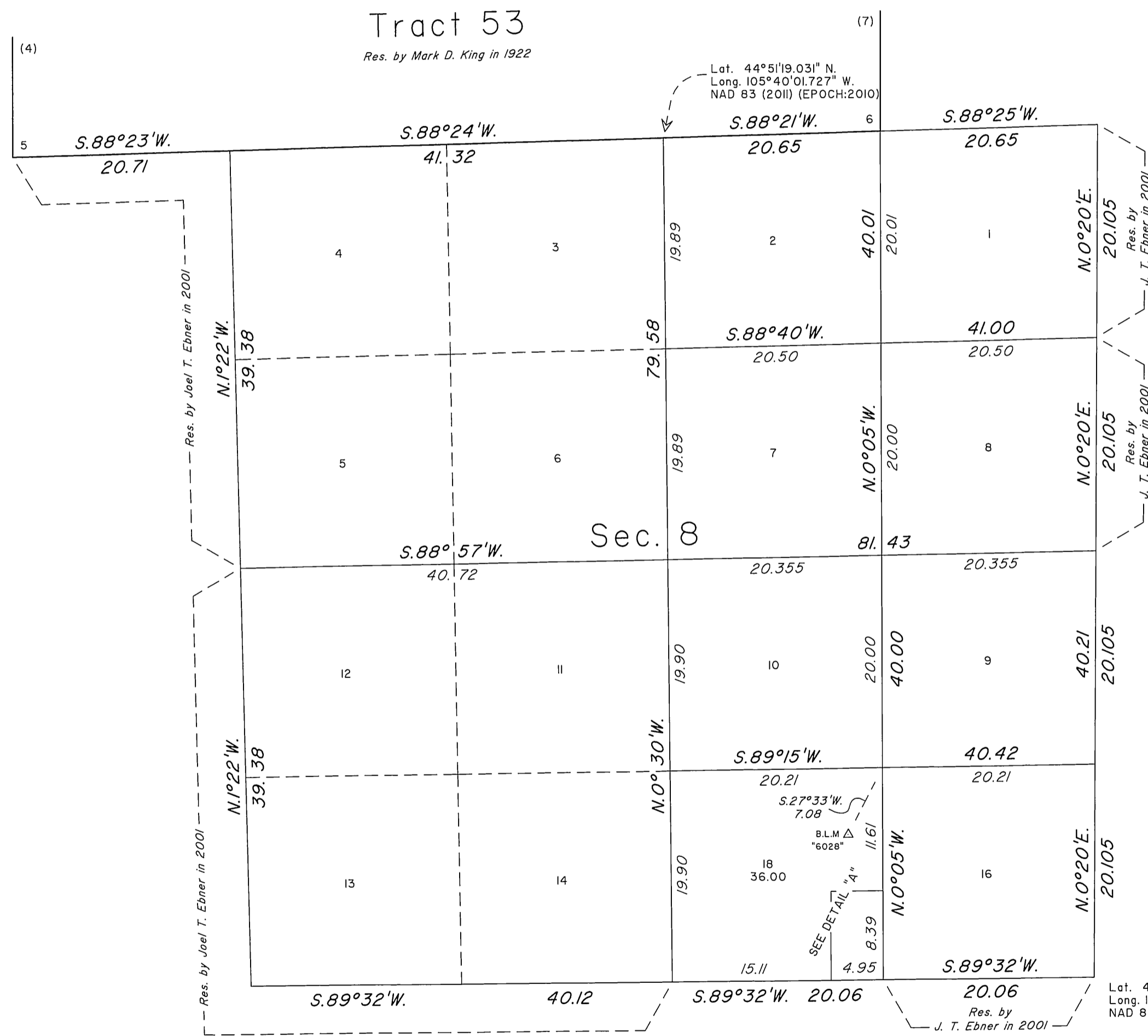
Cheyenne, Wyoming August 14, 2012

This plat is strictly conformable to the approved field notes, and the survey, having been correctly executed in accordance with the requirements of law and the regulations of this Bureau, is hereby accepted.

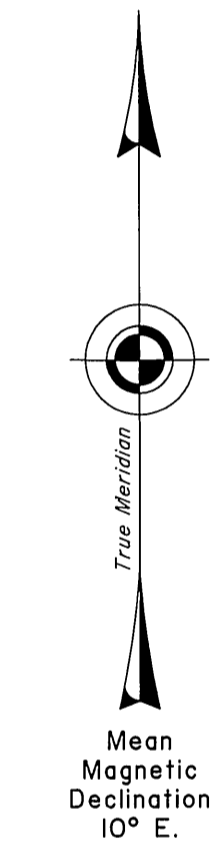
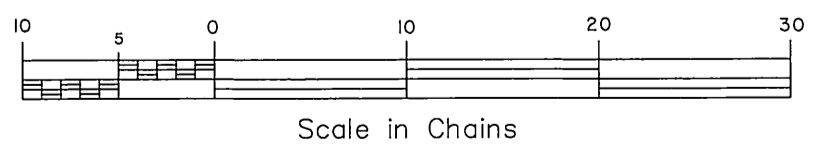
For the Director

John P. Lee

John P. Lee
Chief Cadastral Surveyor for Wyoming

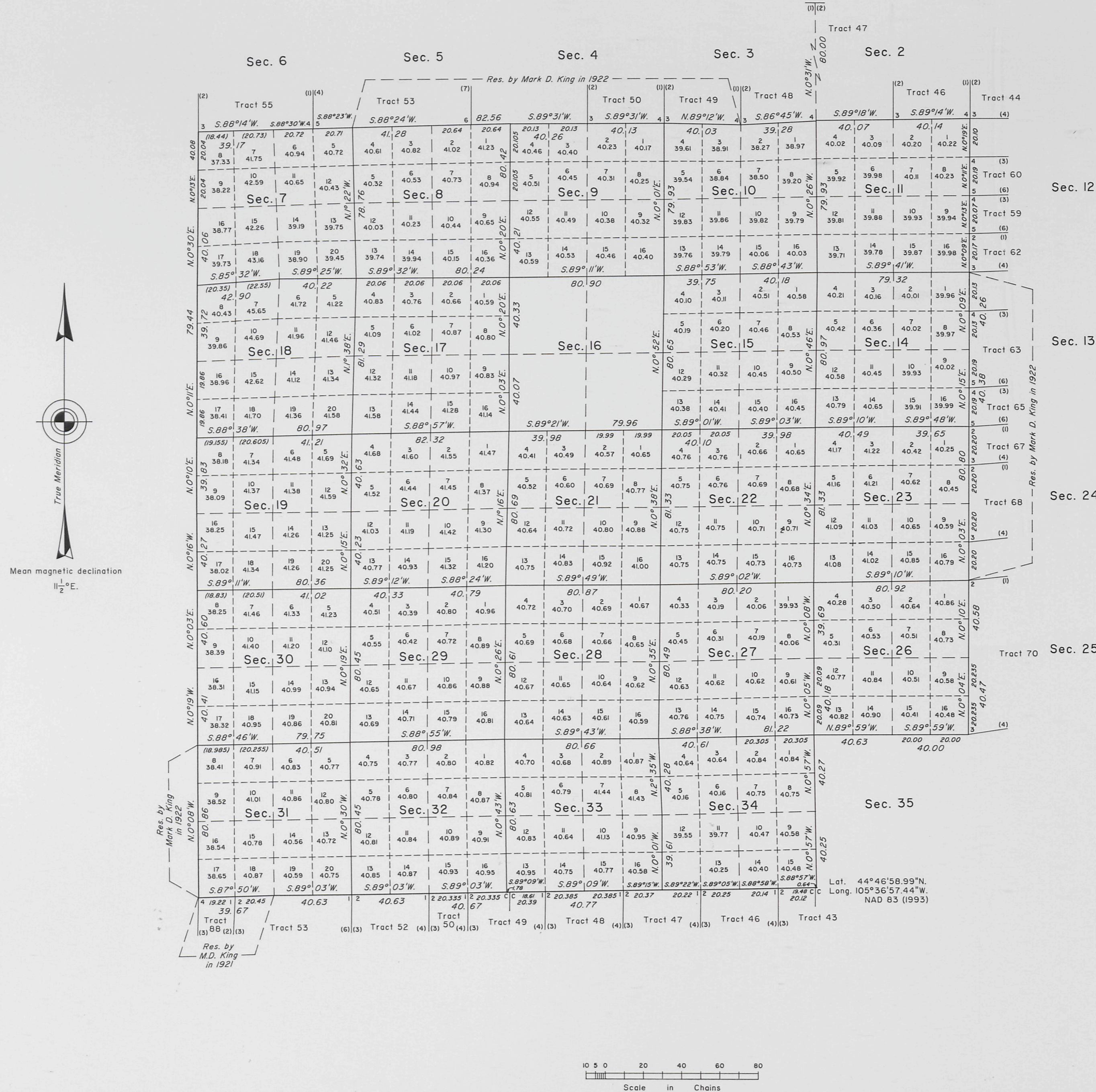


Lot. 44°50'27.395" N.
Long. 105°39'24.339" W.
NAD 83 (2011) (EPOCH:2010)



JTE

TOWNSHIP 56 NORTH, RANGE 73 WEST, OF THE SIXTH PRINCIPAL MERIDIAN, WYOMING.
DEPENDENT RESURVEY



A history of surveys is contained in the field notes.

This plat represents the dependent resurvey of portions of the south and west boundaries and portions of the subdivision lines designed to restore the corners in their true original locations according to the best available evidence, T. 56 N., R. 73 W., Sixth Principal Meridian, Wyoming.

Certain modified lots and areas shown hereon pertain to Federal interest estate only. Except as indicated hereon, the lottings and areas are as shown on the plat approved September 4, 1883.

Survey executed by Joel T. Ebner, Cadastral Surveyor, beginning May 22, 2001, and completed July 25, 2001, pursuant to Special Instructions dated February 26, 2001, for Group No. 686, Wyoming.

UNITED STATES DEPARTMENT OF THE INTERIOR
BUREAU OF LAND MANAGEMENT

Cheyenne, Wyoming December 31, 2002

This plat is strictly conformable to the approved field notes, and the survey, having been correctly executed in accordance with the requirements of law and the regulations of this Bureau, is hereby accepted.

For the Director
John P. Lee
Chief Cadastral Surveyor for Wyoming

1673-F

2347

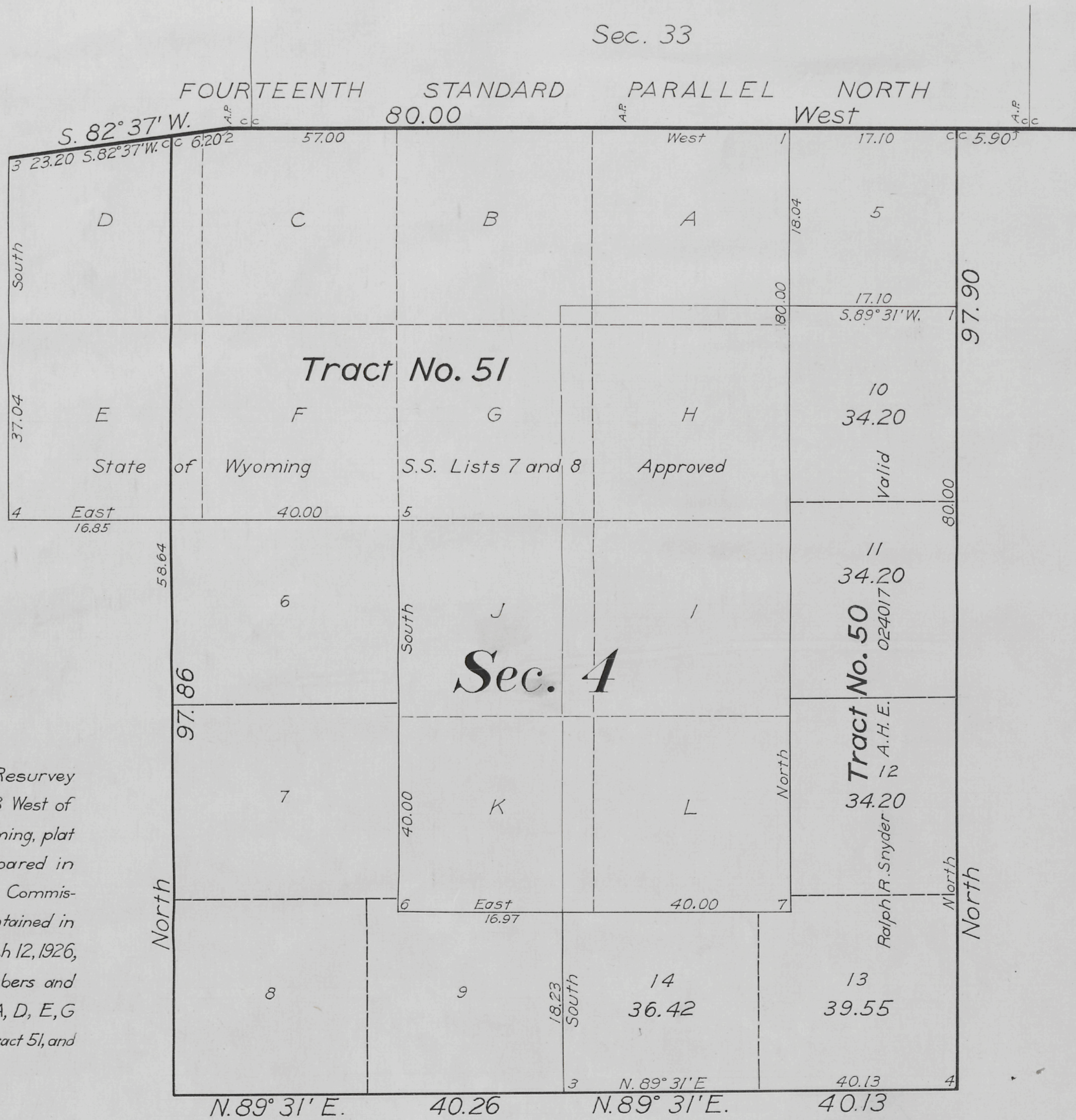
Supplemental Plat No. 2

Resurvey Township No. 56 North, Range No. 73 West of the Sixth Principal Meridian, Wyoming

Scale 10 Chains to 1 Inch

Sec. 32

Sec. 33



This Supplemental Plat No. 2 of Resurvey Township No. 56 North, Range No. 73 West of the Sixth Principal Meridian, Wyoming, plat approved November 27, 1923, is prepared in compliance with instructions from the Commissioner of the General Land Office, contained in letter "E" Buffalo 022563, dated March 12, 1926, for the purpose of showing lot numbers and areas of those portions of sub-tracts A, D, E, G and H, Tract 50, not in conflict with Tract 51, and is hereby approved

Public Survey Office,
Cheyenne, Wyoming
April 20, 1926

Joel A. Hart
Office Cadastral Engineer

W.A.R. DEPARTMENT OF THE INTERIOR
GENERAL LAND OFFICE

Washington, D.C. May 13, 1926
This supplemental plat, having been prepared in accordance with instructions from this office, is hereby accepted

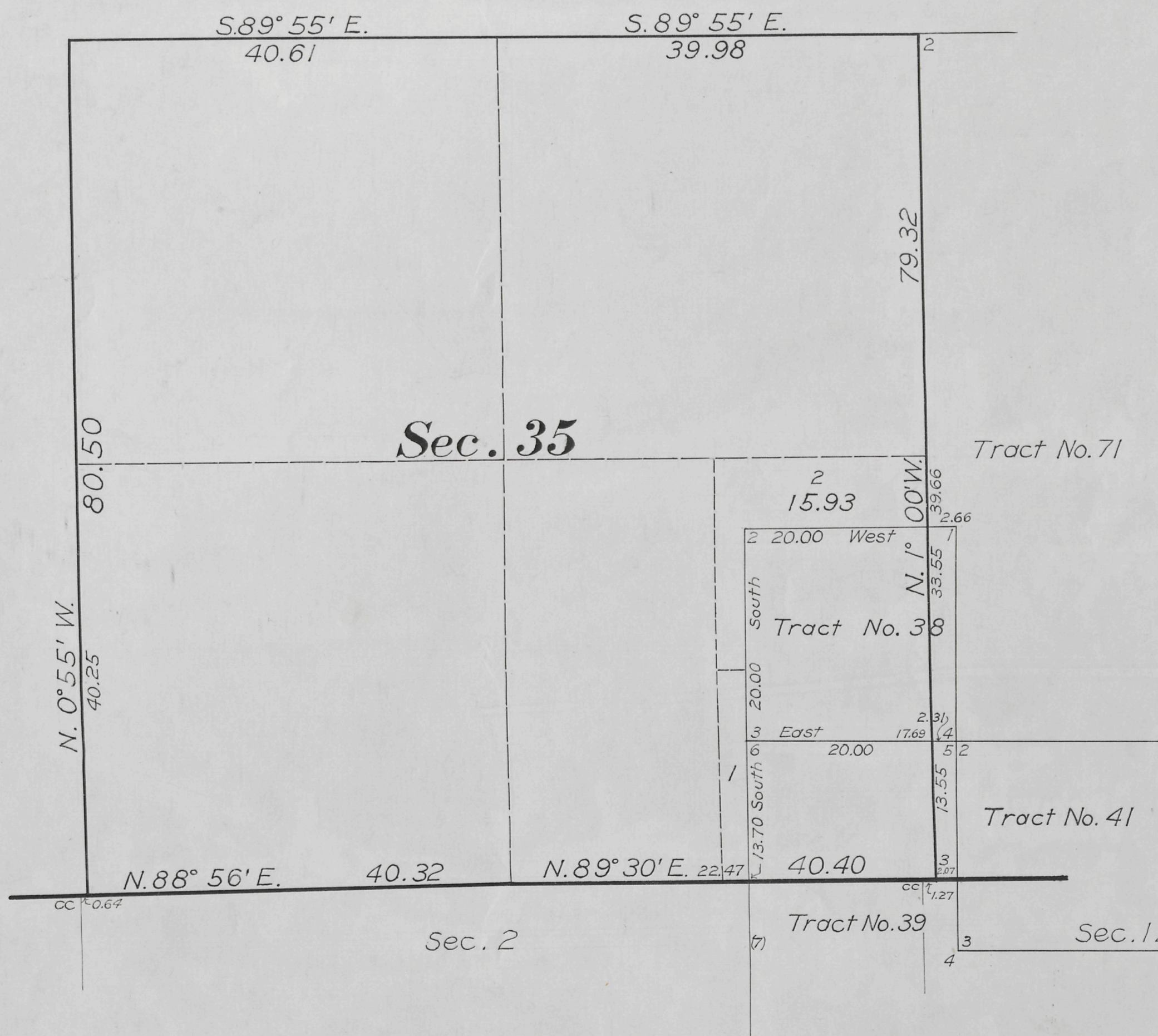
Thorpe Stowell
Assistant Commissioner

56-73
Buffalo, Wyo.
May 20, 1926

Accepted Aug. 25, 1925

Supplemental Plat No. 1
Resurvey Township No. 56 North, Range No. 73 West of the Sixth Principal Meridian, Wyoming

Scale 10 Chains to 1 inch



This Supplemental Plat No. 1 of Resurvey Township No. 56 North, Range No. 73 West of the Sixth Principal Meridian, Wyoming, plat approved November 27, 1923, is prepared in compliance with instructions from the Commissioner of the General Land Office, contained in letter "E" Newcastle 027814, dated May 1, 1925, for the purpose of showing the proper lotting in southeast quarter Section 35 and area of lot 2, to accommodate the adjusted description of A.H.E. 027814, Earl W. Randleman, and is hereby approved

Office of Supervisor of Surveys,
Denver, Colorado, Aug. 5, 1925

Quentin Johnson
Supervisor of Surveys

56 - 73

Accepted by Commr.
Trans. to the Buffalo
Aug. 31, 1925

1673 E

ACCESSION NO. 2346

AMT

2342

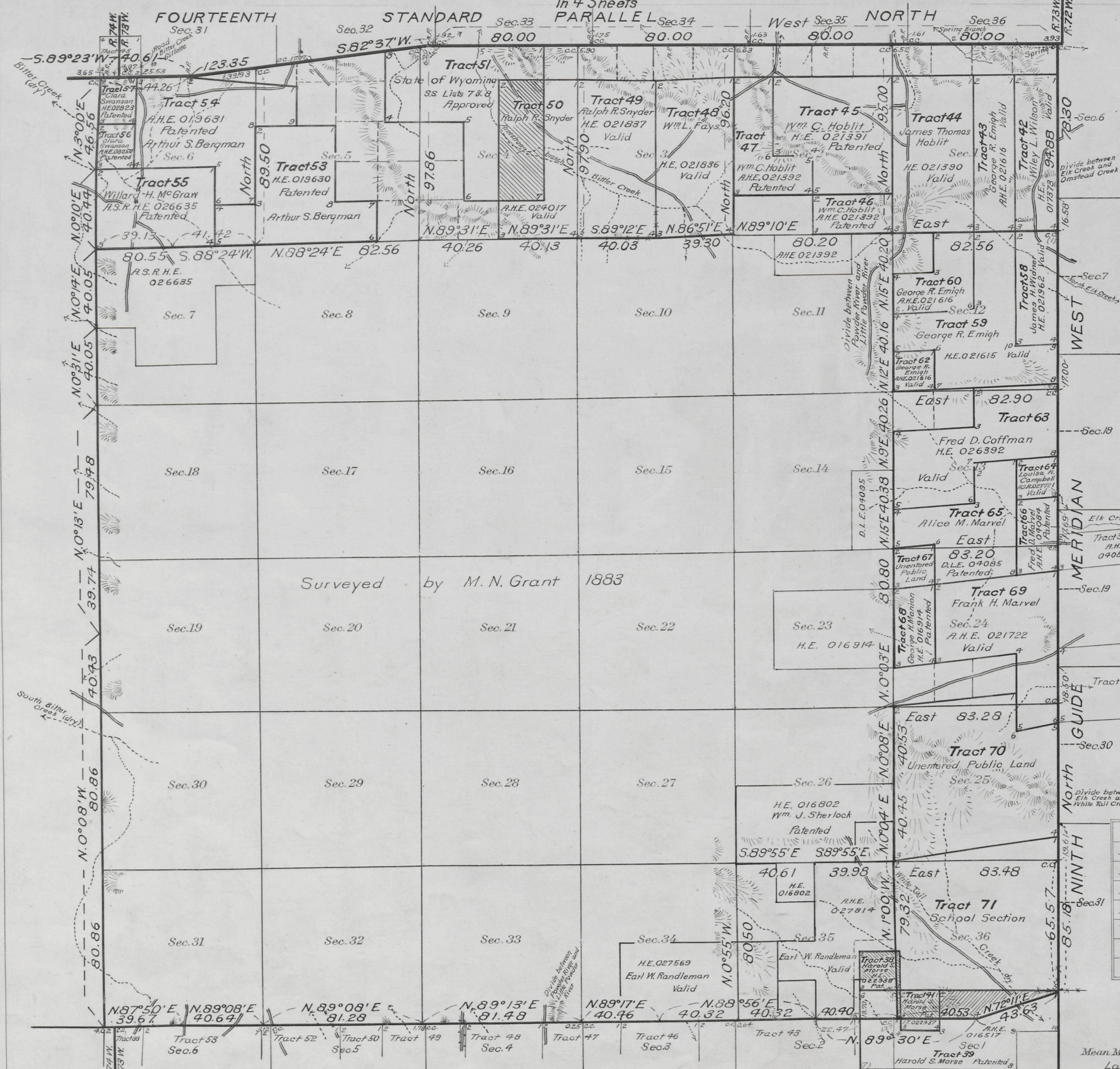
(4-6754)

Accepted February 8, 1924.

ORIGINAL

Resurvey Township N^o56 North, Range N^o73 West of the Sixth Principal Meridian, Wyoming

Sheet N^o1



All tract segregations created in the Independent Resurvey of Sections 1, 2, 3, 4, 5, 6, 12, 13, 24, 25 and 36 Township N^o56 North, Range N^o73 West and shown hereon represent the position and form of said tracts under the original description as referred to the original survey located as such on the ground according to the best available evidence of their true position.

The boundaries of Section 35 as shown hereon delineate a restoration of the lines of the original survey as shown upon the plat approved September 4, 1883 in their true original position; the meridional quarter corners having been restored by proportionate measurement.

See Sheet N^o3 for details of lots of public lands made fractional by the segregation of Tracts N^o 38 and 39 in Section 35.

Surveyed by M. N. Grant 1883

Areas in Acres	
Public Land	
Indian Reservation	
Indian Allotments	
Mineral Claims	
Water Surface	
Total Area	

Scale 40 Chains to an inch
 Mean Magnetic Declination
 Latitude 44° 47' N.
 Longitude 105° 34' W.

Surveys Designated	By Whom Surveyed	Group		Amount of Surveys			When Surveyed	
		No.	Date	Mls.	chs.	lks.	Began	Completed
Resurvey Subdivisions	Mark D. King	57	Jan. 13, 1922	23	18	10	August 15, 1922	August 25, 1922
Connections	" " "	"	" " "	3	61	62	" " "	" " "
Segregated Tracts	" " "	"	" " "	51	69	00	August 17, 1922	August 26, 1922
Resurvey West Bay	" " "	"	" " "	6	08	47	August 22, 1922	August 24, 1922
Resurvey South Bay	" " "	"	July 25, 1921	6	08	73	Oct. 12, 1921	Oct. 15, 1921
Resur. 9th Guide Mer. W.	" " "	"	January 19, 1922	6	03	48	July 22, 1922	August 5, 1922
Resur. 14th St. Par. N.	W. H. Clark	41	Sept. 5, 1916	6	03	68	June 9, 1917	Sept. 13, 1917

This map of Resurvey Township N^o56 North, Range N^o73 West of the Sixth Principal Meridian Wyoming, in four sheets, N^o1 to 4 inclusive, is strictly conformable to the field notes of the resurvey thereof on file in this office, which have been examined and approved

U.S. Surveyor General's Office
 Cheyenne, Wyoming, November 27, 1923

Clyde W. Atterbury
 Surveyor General.

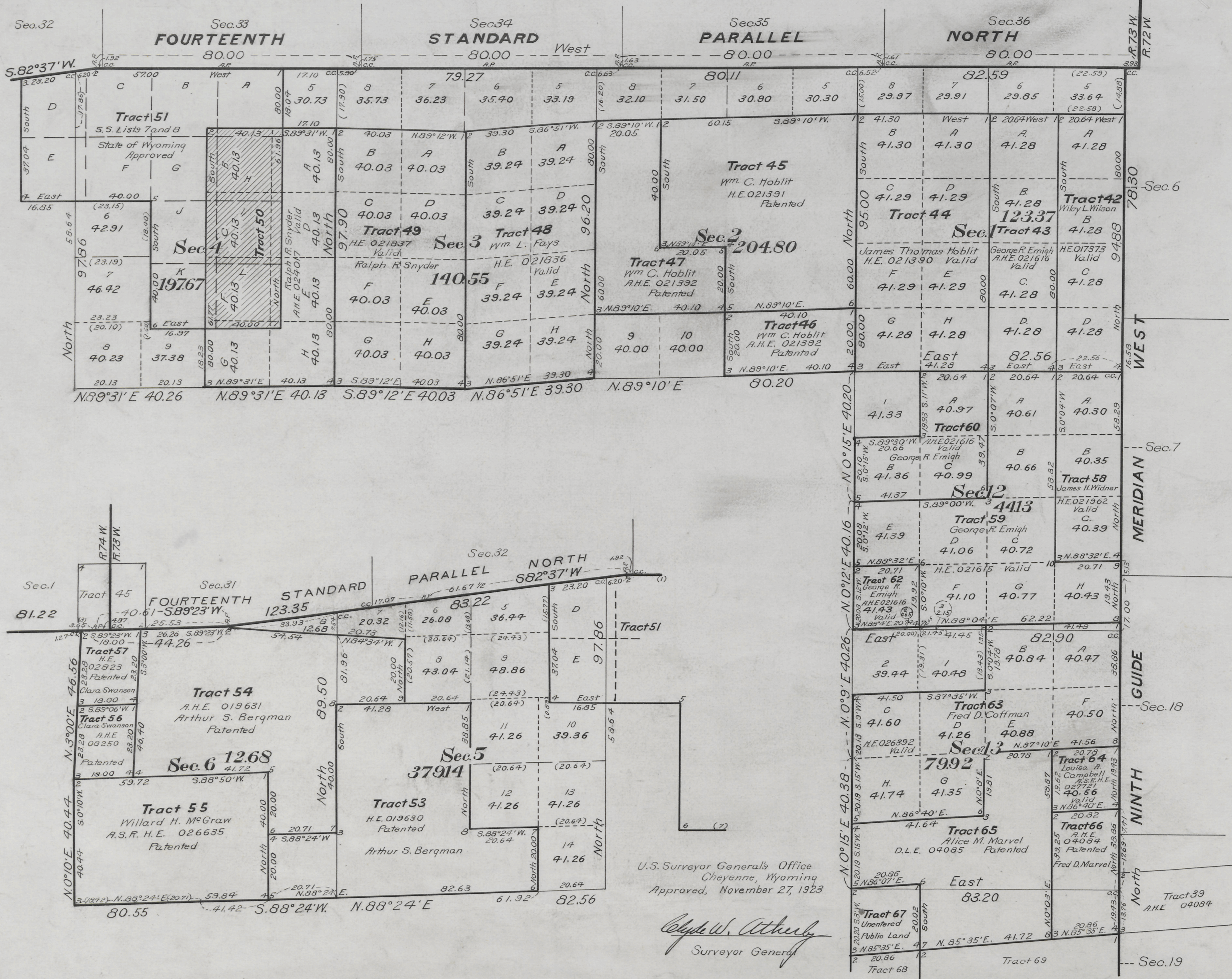
1673-A

56-73
 Hans Newcastle
 March 26, 1924

Resurvey Township N°56 North, Range N°73 West of the Sixth Principal Meridian, Wyoming

In 4 Sheets
Scale: 20 Chains to an Inch

Sec's 1, 2, 3, 4, 5, 6, 12, 13



U.S. Surveyor General's Office
Cheyenne, Wyoming
Approved, November 27, 1923

Clayton W. Athey
Surveyor General

1673-B

56-73
Jana L. Newcastle
March 26, 1924

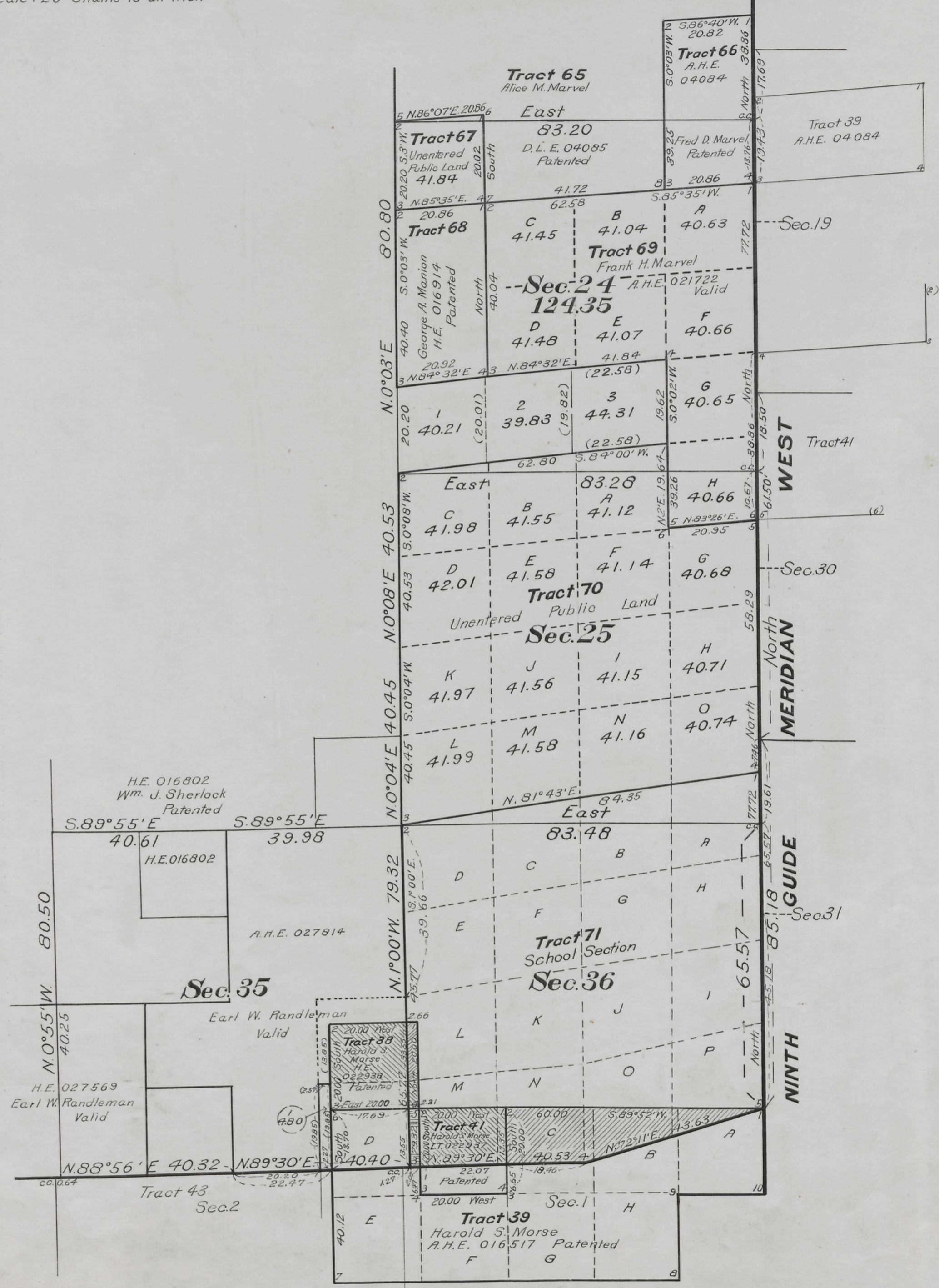
Resurvey Township No 56 North, Range No 73 West of the Sixth Principal Meridian, Wyoming

In 4 Sheets
Scale: 20 Chains to an Inch

Sec's 24, 25, 35, 36

TABLE OF CONFLICTS

Area of conflict of Tract 38 with NE ⁴ SE ⁴ Sec.35, A.H.E. 027814, Earl W. Randleman	24.07	Aores
Area of conflict of Tract 38 with Tract 71-L	3.46	" "
Area of conflict of Tract 38 with Tract 71-M	1.51	" "
Area of Tract 38, exclusive of conflicts with Tracts 71-L and 71-M and NE ⁴ SE ⁴ Sec. 35 A.H.E. 027814, Earl W. Randleman	10.96	" "
Area of Tract 50-A	40.13	" "
Area of conflict of Tract 50-A with Tract 51-A	0.58	" "
Area of conflict of Tract 50-A with Tract 51-H	5.35	" "
Area of Tract 50-A, exclusive of conflicts with Tracts 51-A and 51-H	34.20	" "
Area of Tract 50-B	40.13	" "
Area of conflict of Tract 50-B with Tract 51-A	3.17	" "
Area of conflict of Tract 50-B with Tract 51-B	0.54	" "
Area of conflict of Tract 50-B with Tract 51-G	5.52	" "
Area of conflict of Tract 50-B with Tract 51-I	30.90	" "
Area of Tract 50-B, exclusive of conflicts with Tracts 51-A, 51-B, 51-G and 51-I	00.00	" "
Area of Tract 50-C	40.13	" "
Area of conflict of Tract 50-C with Tract 51-G	0.54	" "
Area of conflict of Tract 50-C with Tract 51-H	3.17	" "
Area of conflict of Tract 50-C with Tract 51-I	30.90	" "
Area of conflict of Tract 50-C with Tract 51-J	5.52	" "
Area of Tract 50-C, exclusive of conflicts with Tracts 51-G, 51-H, 51-I and 51-J	00.00	" "
Area of Tract 50-D	40.13	" "
Area of conflict of Tract 50-D with Tract 51-H	0.58	" "
Area of conflict of Tract 50-D with Tract 51-I	5.35	" "
Area of Tract 50-D, exclusive of conflicts with Tracts 51-H and 51-I	34.20	" "
Area of Tract 50-E	40.13	" "
Area of conflict of Tract 50-E with Tract 51-I	0.58	" "
Area of conflict of Tract 50-E with Tract 51-L	5.35	" "
Area of Tract 50-E, exclusive of conflicts with Tracts 51-I and 51-L	34.20	" "
Area of Tract 50-F	40.13	" "
Area of conflict of Tract 50-F with Tract 51-I	3.17	" "
Area of conflict of Tract 50-F with Tract 51-J	0.54	" "
Area of conflict of Tract 50-F with Tract 51-K	5.52	" "
Area of conflict of Tract 50-F with Tract 51-L	30.90	" "
Area of Tract 50-F, exclusive of conflicts with Tracts 51-I, 51-J, 51-K and 51-L	00.00	" "
Area of Tract 50-G	40.13	" "
Area of conflict of Tract 50-G with Tract 51-K	0.54	" "
Area of conflict of Tract 50-G with Tract 51-L	3.17	" "
Area of Tract 50-G, exclusive of conflicts with Tracts 51-K and 51-L	36.42	" "
Area of Tract 50-H	40.13	" "
Area of conflict of Tract 50-H with Tract 51-L	0.58	" "
Area of Tract 50-H, exclusive of conflict with Tract 51-L	39.55	" "
Area of Tract 51-A	40.25	" "
Area of Tract 51-A, exclusive of conflicts with Tracts 50-A and 50-B	36.50	" "
Area of Tract 51-B	40.16	" "
Area of Tract 51-B, exclusive of conflict with Tract 50-B	39.62	" "
Area of Tract 51-G, exclusive of conflicts with Tracts 50-B and 50-C	33.94	" "
Area of Tract 51-H, exclusive of conflicts with Tracts 50-A, 50-B, 50-C, 50-D	00.00	" "
Area of Tract 51-I, exclusive of conflicts with Tracts 50-C, 50-D, 50-E, 50-F	00.00	" "
Area of Tract 51-J, exclusive of conflicts with Tracts 50-C and 50-F	33.94	" "
Area of Tract 51-K, exclusive of conflicts with Tracts 50-F and 50-G	33.94	" "
Area of Tract 51-L, exclusive of conflicts with Tracts 50-E, 50-F, 50-G, 50-H.	00.00	" "
Area of Tract 71-L, exclusive of conflict with Tract 38	36.54	" "
Area of conflict of Tract 71-M with Tract 39-D	2.97	" "
Area of conflict of Tract 71-M with Tract 41	24.38	" "
Area of Tract 71-M, exclusive of conflicts with Tract 38, Tract 39-D and Tract 41	11.14	" "
Area of conflict of Tract 71-N with Tract 41	2.50	" "
Area of conflict of Tract 71-N with Tract 39-C	24.53	" "
Area of Tract 71-N, exclusive of conflicts with Tract 39-C and Tract 41	12.97	" "
Area of conflict of Tract 71-O with Tract 39-B	18.61	" "
Area of conflict of Tract 71-O with Tract 39-C	2.00	" "
Area of Tract 71-O, exclusive of conflicts with Tracts 39-B and 39-C	19.39	" "
Area of conflict of Tract 71-P with Tract 39-A	6.37	" "
Area of conflict of Tract 71-P with Tract 39-B	0.50	" "
Area of Tract 71-P, exclusive of conflicts with Tracts 39-A and 39-B	33.13	" "
Area of A.H.E. 027814 Earl W. Randleman, exclusive of conflict with Tract 38	295.93	" "



U.S. Surveyor General's Office
Cheyenne, Wyoming
Approved, November 27, 1923

Clyde W. Arthur
Surveyor General

Resurvey Township No 56 North, Range No 73 West of the Sixth Principal Meridian, Wyoming

Group No 57
In 4 Sheets

INDEX TO SEGREGATED TRACTS

Resurvey Tract Number	Original Survey			Subdivisions	Entry		Entryman
	T.	R.	Sec.		Kind	Number	
38	56	73	35	SE ⁺ SE ⁺	H.E.	022938	Patented Harold S. Morse
39	55	73	1	Lots 1, 2, 3, SW ⁺ NE ⁺ , S ² NW ⁺	A.H.E.	016517	Patented Harold S. Morse
			2	Lot 1, SE ⁺ NE ⁺	I.T.	022937	Patented Harold S. Morse
41	"	"	1	Lot 4	H.E.	017373	Valid Wiley L. Wilson
42	56	73	1	Lot 1, SE ⁺ NE ⁺ , E ² SE ⁺	A.H.E.	021616	Valid George R. Emigh
43	"	"	1	Lot 2, SW ⁺ NE ⁺ , W ² SE ⁺	H.E.	021390	Valid James Thomas Hoblit
44	"	"	1	Lots 3, 4, S ² NW ⁺ , SW ⁺	H.E.	021391	Patented Wm. C. Hoblit
45	"	"	2	Lots 1, 2, 3, SE ⁺ NW ⁺ , S ² NE ⁺ , N ² SE ⁺	A.H.E.	021392	Patented Wm. C. Hoblit
46	"	"	2	S ² SE ⁺	A.H.E.	021392	Patented Wm. C. Hoblit
47	"	"	2	Lot 4, SW ⁺ NW ⁺ , N ² SW ⁺	H.E.	021836	Valid Wm. L. Fays
48	"	"	3	Lots 1, 2, S ² NE ⁺ , SE ⁺	H.E.	021837	Valid Ralph R. Snyder
49	"	"	3	Lots 3, 4, S ² NW ⁺ , SW ⁺	A.H.E.	024017	Valid Ralph R. Snyder
50	"	"	4	Lots 1, 2, S ² NE ⁺ , SE ⁺			
51	"	"	4	Lots 3, 4, S ² NW ⁺ , SW ⁺	S.S.	Lists 7 & 8	Approved Wyoming
	"	"	5	Lots 1, 2, S ² NE ⁺			
53	"	"	5	S ² NW ⁺ , SW ⁺ , SW ⁺ SE ⁺	H.E.	019630	Patented Arthur S. Bergman
	"	"	6	SE ⁺ SE ⁺			
54	"	"	5	Lot 4	A.H.E.	019631	Patented Arthur S. Bergman
	"	"	6	Lots 1, 2, 3, SE ⁺ NW ⁺ , S ² NE ⁺ , NE ⁺ SE ⁺	A.S.R.H.E.	026635	Patented Willard H.M. Graw
55	"	"	6	Lots 6, 7, E ² SW ⁺ , W ² SE ⁺	A.H.E.	08250	Patented Clara Swanson
56	"	"	6	Lot 5	H.E.	02823	Patented Clara Swanson
57	"	"	6	Lot 4	H.E.	021962	Valid James H. Widner
58	"	"	12	E ² NE ⁺ , NE ⁺ SE ⁺	H.E.	021615	Valid George R. Emigh
59	"	"	12	W ² NE ⁺ , NW ⁺ SW ⁺ , E ² SW ⁺ , W ² SE ⁺ , SE ⁺ SE ⁺	A.H.E.	021616	Valid George R. Emigh
60	"	"	12	E ² NW ⁺ , SW ⁺ NW ⁺	A.H.E.	021616	Valid George R. Emigh
62	"	"	12	SW ⁺ SW ⁺	H.E.	026392	Valid Fred D. Coffman
63	"	"	13	NE ⁺ , S ² NW ⁺ , N ² SW ⁺	A.S.R.H.E.	027721	Valid Louisa A. Campbell
64	"	"	13	NE ⁺ SE ⁺			
65	"	"	13	W ² SE ⁺ , S ² SW ⁺	D.L.E.	04085	Patented Alice M. Marvel
	"	"	24	NE ⁺ NW ⁺ , NW ⁺ NE ⁺	A.H.E.	04084	Patented Fred D. Marvel
66	"	"	13	SE ⁺ SE ⁺			Unentered Public Land
67	"	"	24	NW ⁺ NW ⁺	H.E.	016914	Patented George A. Manion
68	"	"	24	SW ⁺ NW ⁺ , NW ⁺ SW ⁺			
69	"	"	24	S ² NE ⁺ , SE ⁺ NW ⁺ , NE ⁺ SW ⁺ , N ² SE ⁺ , SE ⁺ SE ⁺	A.H.E.	021722	Valid Frank H. Marvel
	"	"	25	NE ⁺ NE ⁺			Unentered Public Land
70	"	"	25	SE ⁺ NE ⁺ , W ² NE ⁺ , NW ⁺ , SW ⁺ , SE ⁺			Grant Wyoming
71	"	"	36	All	School Section		

U.S. Surveyor General's Office
Cheyenne, Wyoming
Approved, November 27, 1923

Clyde W. Atchley
Surveyor General

2541

TOWNSHIP No 56 NORTH, RANGE No 73 WEST of the 6th Principal MERIDIAN.



Total number of Acres. 22,974.60

Surveys Designated	By Whom Surveyed	Date of Contract	Amount of Surveys M ² C ² L ²	When Surveyed	Magnetic Declination
S & W Township lines	M. N. Grant	July 12, 1882	11 79 23	March 7 & 10, 1883	17° E. or S. E.
Subdivisions	"	"	59 72 12	" 27 & 31, 1883	17° "
Connections	"	"	1 03 38	"	"
14° Stand. P. N.	"	"	5 78 94	March 8, 1883	"
9° Guide Mer. W.	L. F. Stahl	July 11, 1882	6 00 00	Octob. 24, 1882	"

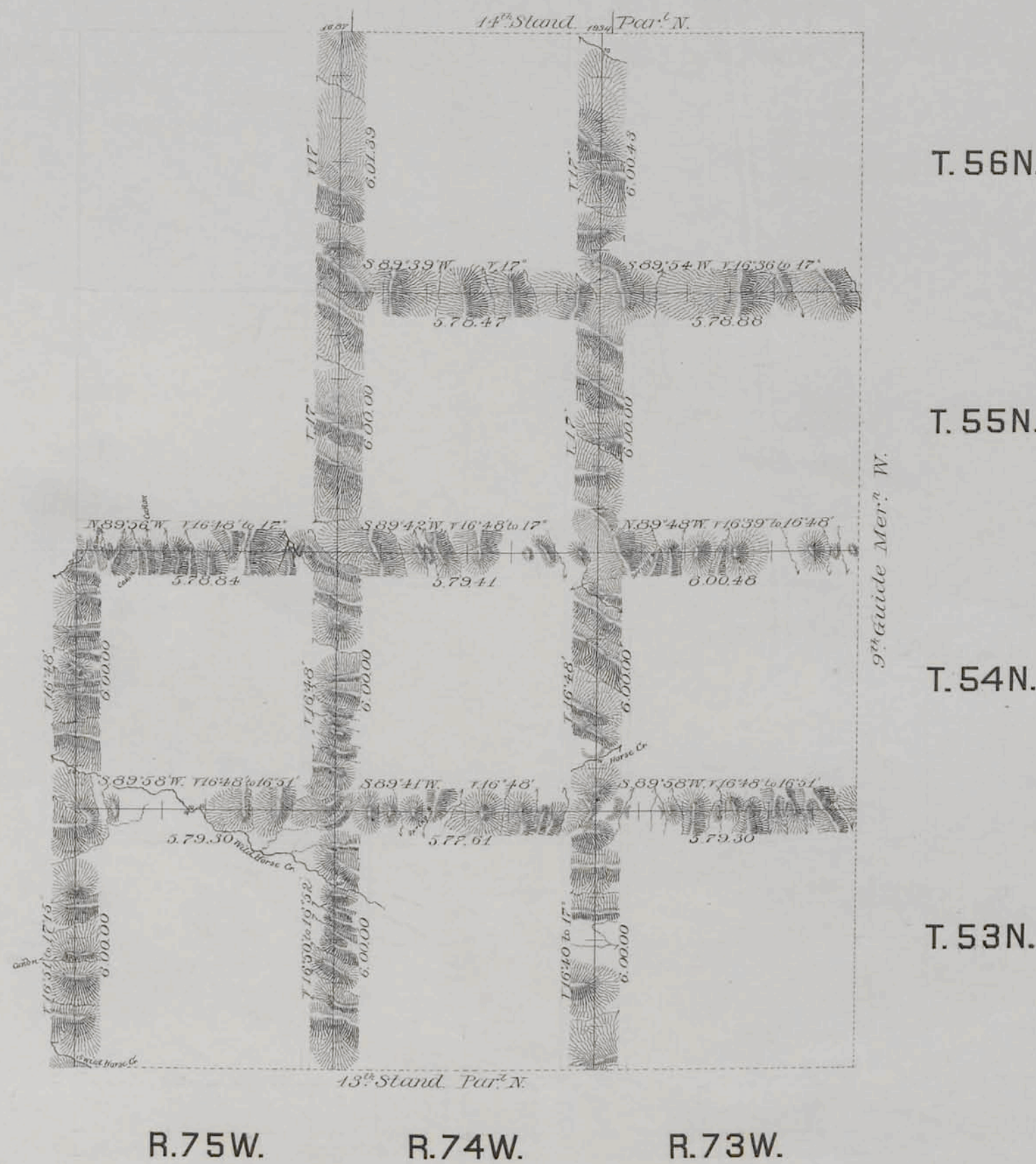
The above Map of Township No 56 North, Range No 73 West of the Sixth Principal Meridian Wyoming Territory is strictly conformable to the field notes of the survey thereof on file in this Office, which have been examined and approved

Surveyor General's Office,
Cheyenne Wyoming
September 4th 1883

Edw. C. Davis
Supt. Gen.

EXTERIOR LINES.

Scale 3 miles to 1 inch. Magnetic Variation E.



Surveys Designated	By Whom Surveyed	Date of Contract	Amount of Surveys			When Surveyed.
			Ac.	Sq. R.	Sec.	
Exterior lines	M. N. Grant	July 12 th 1882	107	74	11	March 5-19 1883
Connections	"	"	36	21	"	"

I hereby certify that the above diagram of the Exterior lines of Tps 53 & 54 N, R's 73 & 74 W, and Tps 55 & 56 N, R's 73, 74 & 75 W, of the 6th Principal Meridian, Wyoming Territory, is strictly conformable to the field notes of the survey thereof on file in this Office, which have been examined and approved.
 Surveyor General's Office,
 Cheyenne Wyoming *Sept 24th 1883* Edw. C. David Sur^r Gen^l

(21)
Index

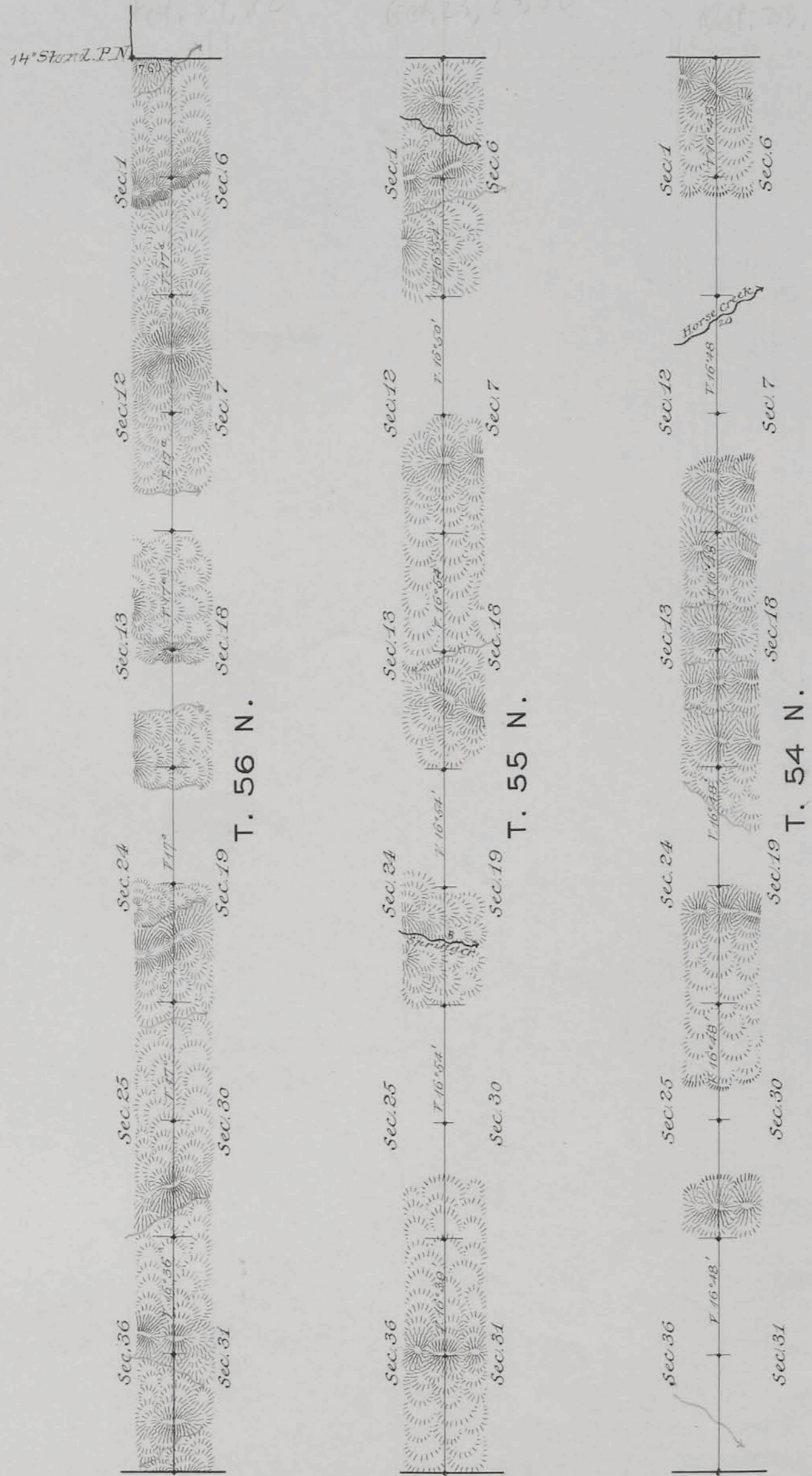
2248

9TH GUIDE MERIDIAN WEST

In Tps. 54, 55 & 56 N. between Rgs. 72 & 73 W. of the 6th Prin. Mer. Wyo. Ter.

Magnetic Var. East

Scale 40 Chs. to 1 Inch



Surveys Designated	By Whom Surveyed	Date of Contract	Amount of Surveys			When Surveyed
			Mls	Chs	Lks	
9 th Guide Mer. W.	L. F. Stahle	July 11, 1882	18	00	00	Oct. 23-24, 1882

The above Diagram of the 9th Guide Meridian West in Tps 54, 55 & 56 N. between Rgs. 72 & 73 West of the 6th Prin. Mer., Wyo. Ter., is strictly conformable to the Fieldnotes of the Survey thereof, on file in this Office, which have been examined and approved.

Surveyor General's Office
Cheyenne, Wyoming
August 18, 1883

Edw. C. David
Sur. Gen.