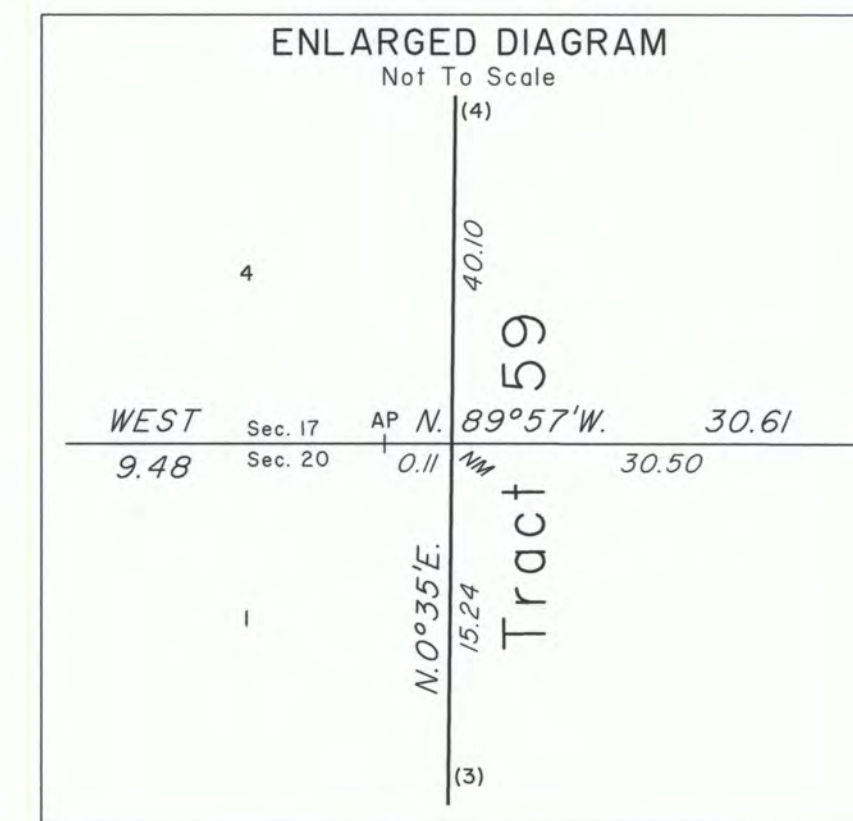
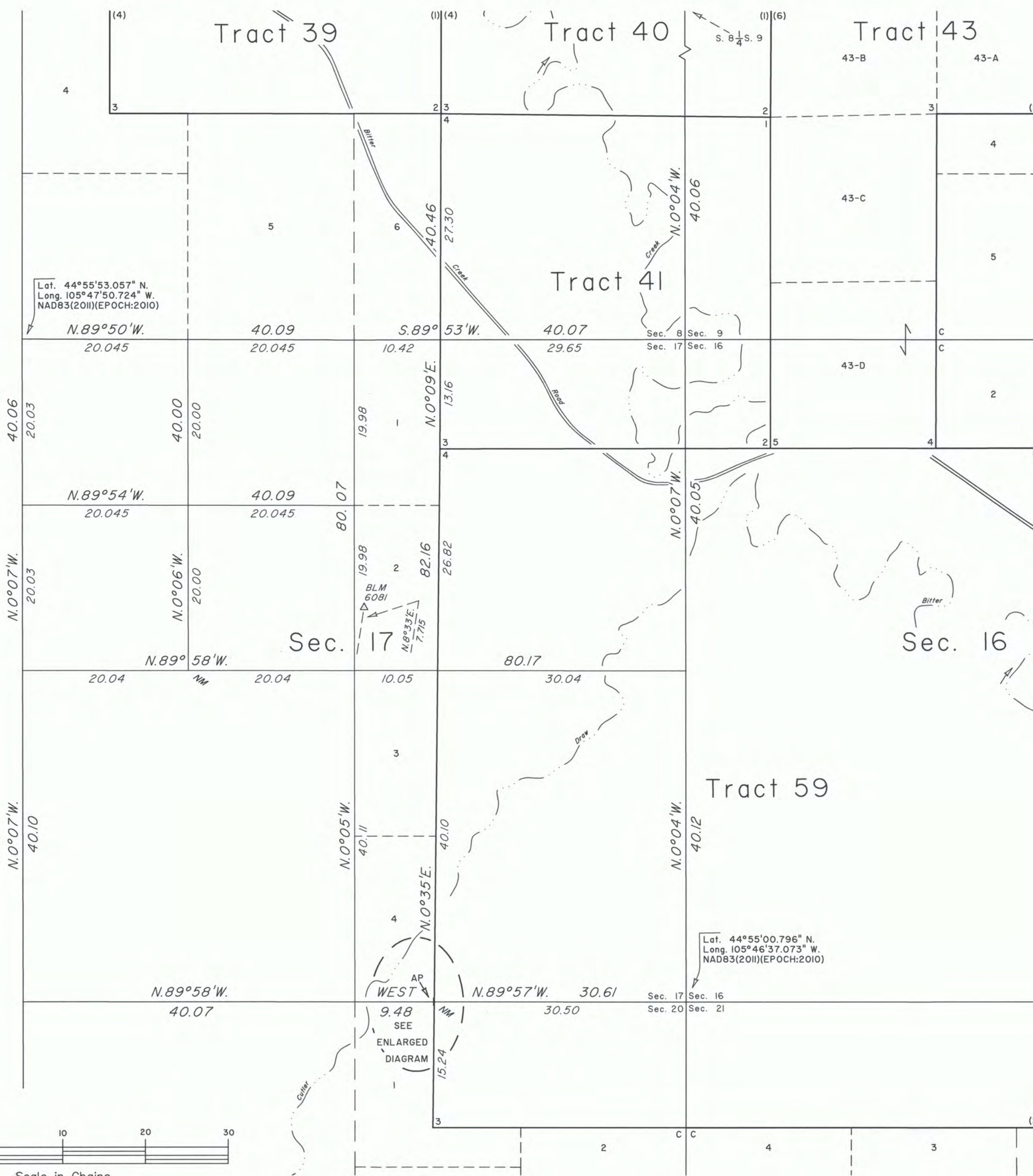


## T. 57 N., R. 74 W., Sixth Principal Meridian, Wyoming, Field Note Links

Plat Accession Number(s)	Year(s) of Survey	
		Township Subdivision Plats
8748	2017	<a href="https://www.wy.blm.gov/cadastral/countyplats/campbell/fieldnotes/t57nr74w_gp963fn.pdf">https://www.wy.blm.gov/cadastral/countyplats/campbell/fieldnotes/t57nr74w_gp963fn.pdf</a>
3824	1920	<a href="https://www.wy.blm.gov/cadastral/countyplats/campbell/fieldnotes/t57nr74w_gp041fn_t63.pdf">https://www.wy.blm.gov/cadastral/countyplats/campbell/fieldnotes/t57nr74w_gp041fn_t63.pdf</a>
3821; 3822; 3823	1917-19	<a href="https://www.wy.blm.gov/cadastral/countyplats/campbell/fieldnotes/t57nr74w_gp041fn.pdf">https://www.wy.blm.gov/cadastral/countyplats/campbell/fieldnotes/t57nr74w_gp041fn.pdf</a>
3821; 3822; 3823	1917	<a href="https://www.wy.blm.gov/cadastral/countyplats/campbell/fieldnotes/t57nr74w_gp041fn_bnd.pdf">https://www.wy.blm.gov/cadastral/countyplats/campbell/fieldnotes/t57nr74w_gp041fn_bnd.pdf</a>
3820	1883	<a href="https://www.wy.blm.gov/cadastral/countyplats/campbell/fieldnotes/t57nr74w_c112fn.pdf">https://www.wy.blm.gov/cadastral/countyplats/campbell/fieldnotes/t57nr74w_c112fn.pdf</a>
		Township Exterior Plats
3812	1883	<a href="https://www.wy.blm.gov/cadastral/countyplats/crook/fieldnotes/ext3812.pdf">https://www.wy.blm.gov/cadastral/countyplats/crook/fieldnotes/ext3812.pdf</a>
2361	1882	<a href="https://www.wy.blm.gov/cadastral/countyplats/campbell/fieldnotes/ext2361.pdf">https://www.wy.blm.gov/cadastral/countyplats/campbell/fieldnotes/ext2361.pdf</a>
2361	1883	<a href="https://www.wy.blm.gov/cadastral/countyplats/campbell/fieldnotes/retext1681.pdf">https://www.wy.blm.gov/cadastral/countyplats/campbell/fieldnotes/retext1681.pdf</a>

TOWNSHIP 57 NORTH, RANGE 74 WEST, OF THE SIXTH PRINCIPAL MERIDIAN, WYOMING.

DEPENDENT RESURVEY AND SURVEY



A history of surveys is contained in the field notes.

This plat represents the dependent resurvey of portions of certain tracts and the subdivisional lines, designed to restore the corners in their true original locations according to the best available evidence, and the survey of the subdivision of section 17, T. 57 N., R. 74 W., Sixth Principal Meridian, Wyoming.

The lotting and areas are as shown on the plat approved August 19, 1919.

Survey executed by James E. Jacob, Cadastral Surveyor, beginning August 22, 2017, and completed October 31, 2017, pursuant to special instructions and assignment instructions dated July 25, 2017, for Group No. 963, Wyoming.

Notes:  
NM indicates corner not monumented.

Solid lines not showing bearing and distance were surveyed by William H. Clark in 1917.

UNITED STATES DEPARTMENT OF THE INTERIOR  
BUREAU OF LAND MANAGEMENT

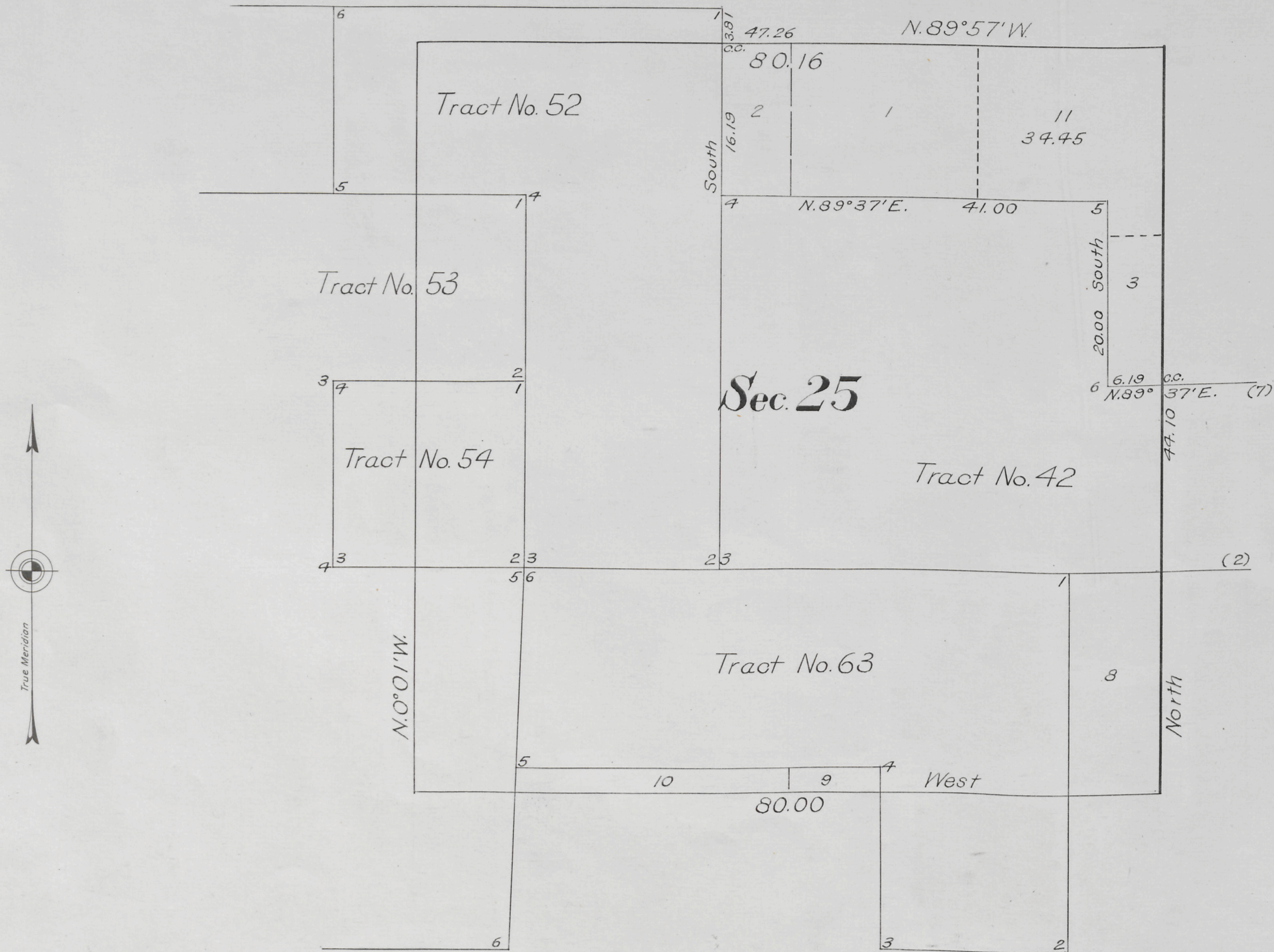
Cheyenne, Wyoming November 8, 2018

This plat is strictly conformable to the approved field notes, and the survey, having been correctly executed in accordance with the requirements of law and the regulations of this Bureau, is hereby accepted.

For the Director

Sonja S. Sparks  
Chief Cadastral Surveyor for Wyoming

Supplemental Plat No. 4  
 Resurvey Township No. 57 North, Range No. 74 West of the Sixth Principal Meridian, Wyoming



This Supplemental Plat No. 4, Resurvey Township No. 57 North, Range No. 74 West of the Sixth Principal Meridian, Wyoming, plat approved August 19, 1919, is prepared in accordance with directions given in Commissioner's Letter "E" dated November 21, 1925 for the purpose of giving legal designation and area to the fractional NE\*NE\* Section 25, in order to accommodate H.E. Buffalo 024274 of William Coffman and is hereby approved.  
 Office of District Cadastral Engineer  
 Cheyenne, Wyoming December 8, 1925

*Joel Q. Threlk*  
 Office Cadastral Engineer

WAL DEPARTMENT OF THE INTERIOR  
 GENERAL LAND OFFICE,  
 Washington, D. C., February 1, 1926.  
 This supplemental plat having been properly prepared in accordance with instructions from this office, is hereby accepted.

*D. H. Parrott*  
 Acting Assistant Commissioner.

Mean Magnetic Declination, Scale: 10 Chains to an Inch. Area Surveyed, Acres.

LINES DESIGNATED	BY WHOM SURVEYED	NO	GROUP DATE	MILEAGE		WHEN SURVEYED	
				MLS.	CHS.	BEGUN	COMPLETED
Exterior							
Subdivisional							
Meander							
Miscellaneous							

2236-E

Leux to Buffalo & Co.  
 Feb. 5, 1926 57-74

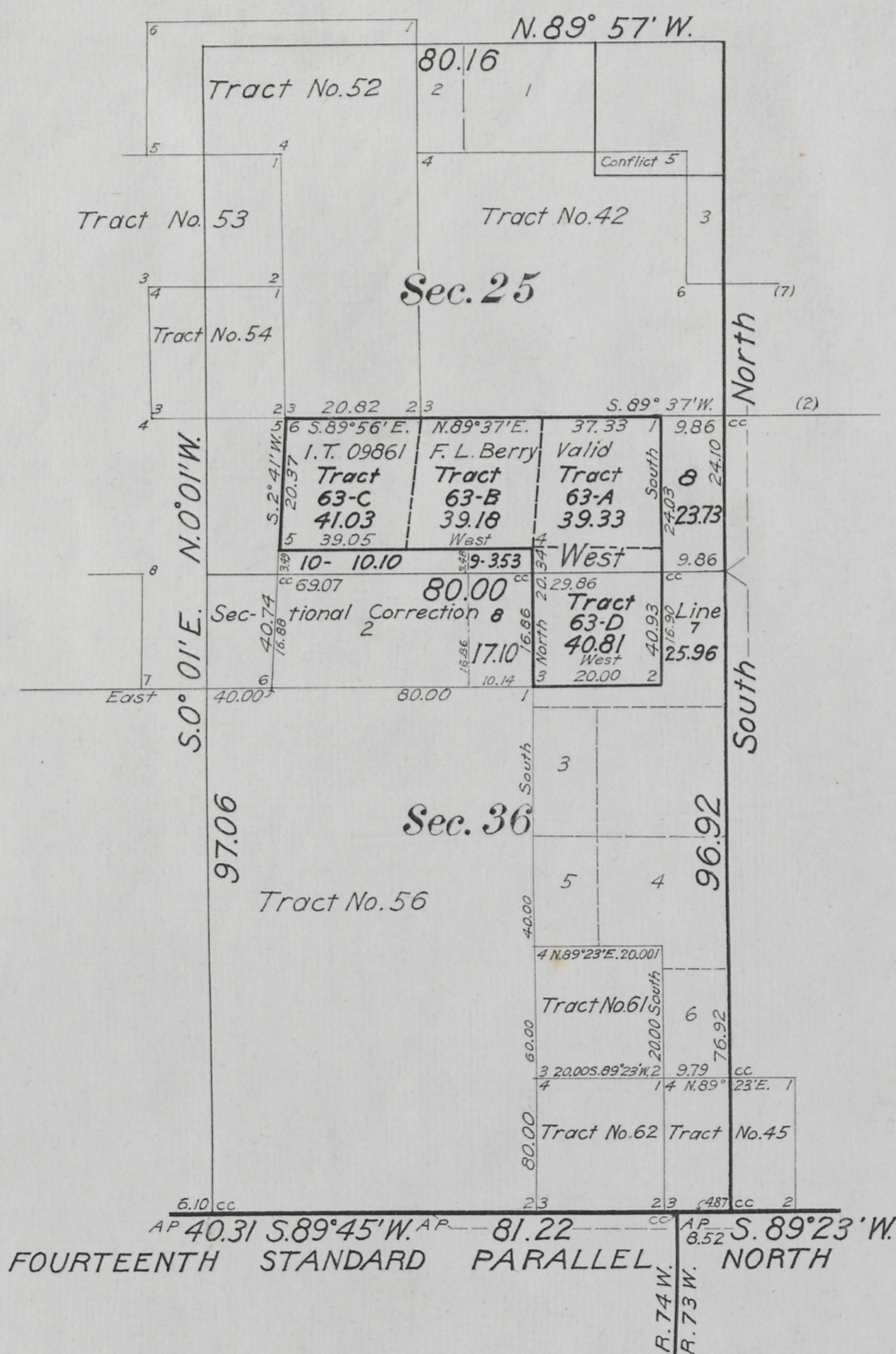
2236-D

3824

Supplemental Plat No.3  
Resurvey Township No. 57 North, Range No. 74 West of the Sixth Principal Meridian Wyoming  
Sections 25 and 36

Scale 20 Chains to an Inch

INDEX TO SEGREGATED TRACT								
Resurvey	Description By Original Survey							
Tract No.	T.	R.	Sec.	Subdivisions	ENTRY Kind	ENTRY No.	STATUS In Land Office	Entryman
63	57	74	25	N <sup>2</sup> SE <sup>4</sup>				
	57	73	30	Lots 3 and 4	I.T.	09861	F.C. Issued	Fannie L. Berry



Surveys Designated	By Whom Surveyed	Group		Amount of Surveys			When Surveyed	
		No.	Date	Mls.	chs.	lks.	Begun	Completed
Segregated Tract No. 63	Mark D. King	41	April 16, 1920	2	38	84	October 21, 1920	October 22, 1920

THIS SUPPLEMENTAL PLAT OF SECTIONS 25 AND 36, RESURVEY TOWNSHIP NO. 57 NORTH, RANGE NO. 74 WEST OF THE SIXTH PRINCIPAL MERIDIAN, WYOMING, APPROVED AUGUST 19, 1919, SHOWING THE SEGREGATION OF TRACT NO. 63 AND THE RESULTING FRACTIONAL LOTS CREATED THEREBY, IS STRICTLY CONFORMABLE TO THE OFFICE RECORDS AND FIELD NOTES OF THE SURVEY OF TRACT NO. 63 AND IS HEREBY APPROVED.

OFFICE OF U.S. SURVEYOR GENERAL,  
CHEYENNE, WYOMING, FEBRUARY 7, 1921.

*Charles S. Decker*  
Surveyor General

57-74

2236-D





2236-C

ORIGINAL

Accepted June 28, 1920.

3923

Supplemental Plat No. 2

Resurvey Township No. 57 North, Range No. 74 West of the Sixth Principal Meridian, Wyoming

Index Diagram

Group No. 41

Resurvey			Description By Original Survey						
Tract No.	T.	R.	Sec.	Subdivisions	Entry Kind	No.	Status in Land Office	Entryman	
38	57	74	5	Lots 3, 4, S <sup>2</sup> NW <sup>4</sup>					
	"	"	6	S <sup>2</sup> NE <sup>4</sup> , NW <sup>4</sup> SE <sup>4</sup> , NE <sup>4</sup> SW <sup>4</sup>	H.E.	010714	Valid	John W. Cutler	
39	"	"	5	SE <sup>4</sup>					
	"	"	8	NE <sup>4</sup>	H.E.	09531	F.C. Issued	Lynn H. Barnes	
40	"	"	9	NW <sup>4</sup>	S.S.	List 1	Patented	Wyoming	
41	"	"	9	SW <sup>4</sup>	H.E.	0375	Patented	William E. Cutler	
42	"	73	30	E <sup>2</sup> NE <sup>4</sup> , SW <sup>4</sup> NE <sup>4</sup> , SE <sup>4</sup> NW <sup>4</sup> , Lots 1, 2					
	"	74	25	E <sup>2</sup> NE <sup>4</sup>	H.E.	09265	Patented	William Coffman	
43	"	"	9	S <sup>2</sup> NE <sup>4</sup> , W <sup>2</sup> SE <sup>4</sup>	A.H.E.	012393	Valid	Lauvernia Cutler	
44	"	"	15	SE <sup>4</sup> SW <sup>4</sup> , S <sup>2</sup> SE <sup>4</sup>					
	"	"	22	NE <sup>4</sup> NE <sup>4</sup>	H.E.	02746	Valid	Curtis G. Beason	
58	"	"	15	N <sup>2</sup> SE <sup>4</sup>	A.H.E.	04950	Valid	Curtis G. Beason	
57	"	"	14	SW <sup>4</sup> SW <sup>4</sup>	A.H.E.	04950	Valid	Curtis G. Beason	
60	"	"	22	NW <sup>4</sup> NE <sup>4</sup>	A.H.E.	04950	Valid	Curtis G. Beason	
45	"	73	31	SE <sup>4</sup> SW <sup>4</sup>	A.H.E.	08250	Patented	Clara Swanson	
46	"	74	15	SW <sup>4</sup> NE <sup>4</sup> , N <sup>2</sup> NW <sup>4</sup>					
	"	"	15	SE <sup>4</sup> NW <sup>4</sup>	A.H.E.	010050	Valid	Fred C. Swartz	
47	"	"	15	SW <sup>4</sup> NW <sup>4</sup> , W <sup>2</sup> SW <sup>4</sup> , NE <sup>4</sup> SW <sup>4</sup>	H.E.	0115	Patented	Fred C. Swartz	
48	"	"	22	S <sup>2</sup> NE <sup>4</sup> , E <sup>2</sup> NW <sup>4</sup>	Pre Cash	403	Patented	Gilbert de Saumarez Hamilton	
49	"	"	22	NE <sup>4</sup> SE <sup>4</sup>					
	"	"	23	W <sup>2</sup> SW <sup>4</sup> , SE <sup>4</sup> SW <sup>4</sup>	Pre Cash	402	Patented	Malcolm Moncreiffe	
50	"	"	23	W <sup>2</sup> NW <sup>4</sup> , SE <sup>4</sup> NW <sup>4</sup> , NE <sup>4</sup> SW <sup>4</sup>	H.E.	02747	Patented	Grover C. Swartz	
51	"	"	23	NW <sup>4</sup> SE <sup>4</sup> , S <sup>2</sup> SE <sup>4</sup>					
	"	"	24	SW <sup>4</sup> SW <sup>4</sup>	H.E.	02595	Patented	Otto Swanson	
52	"	"	24	SE <sup>4</sup> SW <sup>4</sup> , SW <sup>4</sup> SE <sup>4</sup>					
	"	"	25	W <sup>2</sup> NE <sup>4</sup>	H.E.	04666	Patented	Otto Swanson	
53	"	"	25	N <sup>2</sup> NW <sup>4</sup> , SW <sup>4</sup> NW <sup>4</sup> , NW <sup>4</sup> SW <sup>4</sup> , E <sup>2</sup> SW <sup>4</sup>					
	"	"	26	E <sup>2</sup> NE <sup>4</sup>	D.E.	03187	Patented	Fannie L. Berry	
54	"	"	25	SE <sup>4</sup> NW <sup>4</sup>	I.T.	09860	Patented	Charles P. Berry	
55	"	"	26	W <sup>2</sup> NE <sup>4</sup> , NW <sup>4</sup> SE <sup>4</sup> , E <sup>2</sup> NW <sup>4</sup> , SW <sup>4</sup> NW <sup>4</sup> , W <sup>2</sup> SW <sup>4</sup>	H.E.	011283	Valid	Fred Gates	
56	"	"	36	All	SCHOOL SECTION			Wyoming	
61	"	73	31	Lot 3	A.H.E.	08250	Patented	Clara Swanson	
62	"	"	31	Lot 4	H.E.	4190	Patented	Clara Swanson	
59	"	74	16	All	SCHOOL SECTION			Wyoming	
Use Resurvey of T. 58N, R. 74W	49 A, B, C, D, E, F, G	58	74	31	S <sup>2</sup> SE <sup>4</sup> , NW <sup>4</sup> SE <sup>4</sup>				
		"	"	32	SW <sup>4</sup> SW <sup>4</sup>	H.E.	010191	Valid	James Butcher
50 A	58	74	32	W <sup>2</sup> SE <sup>4</sup> , SE <sup>4</sup> NW <sup>4</sup> , NE <sup>4</sup> SW <sup>4</sup>	H.E.	1194	Patented	Cora Y. Creswell	

This Index Diagram is made to accompany the plat of the resurvey of Township No. 57 North Range No. 74 West of the Sixth Principal Meridian Wyoming and is hereby approved  
 U.S. Surveyor General's Office  
 Cheyenne, Wyoming  
 August 19, 1919

*Charles J. Decker*  
 Surveyor General

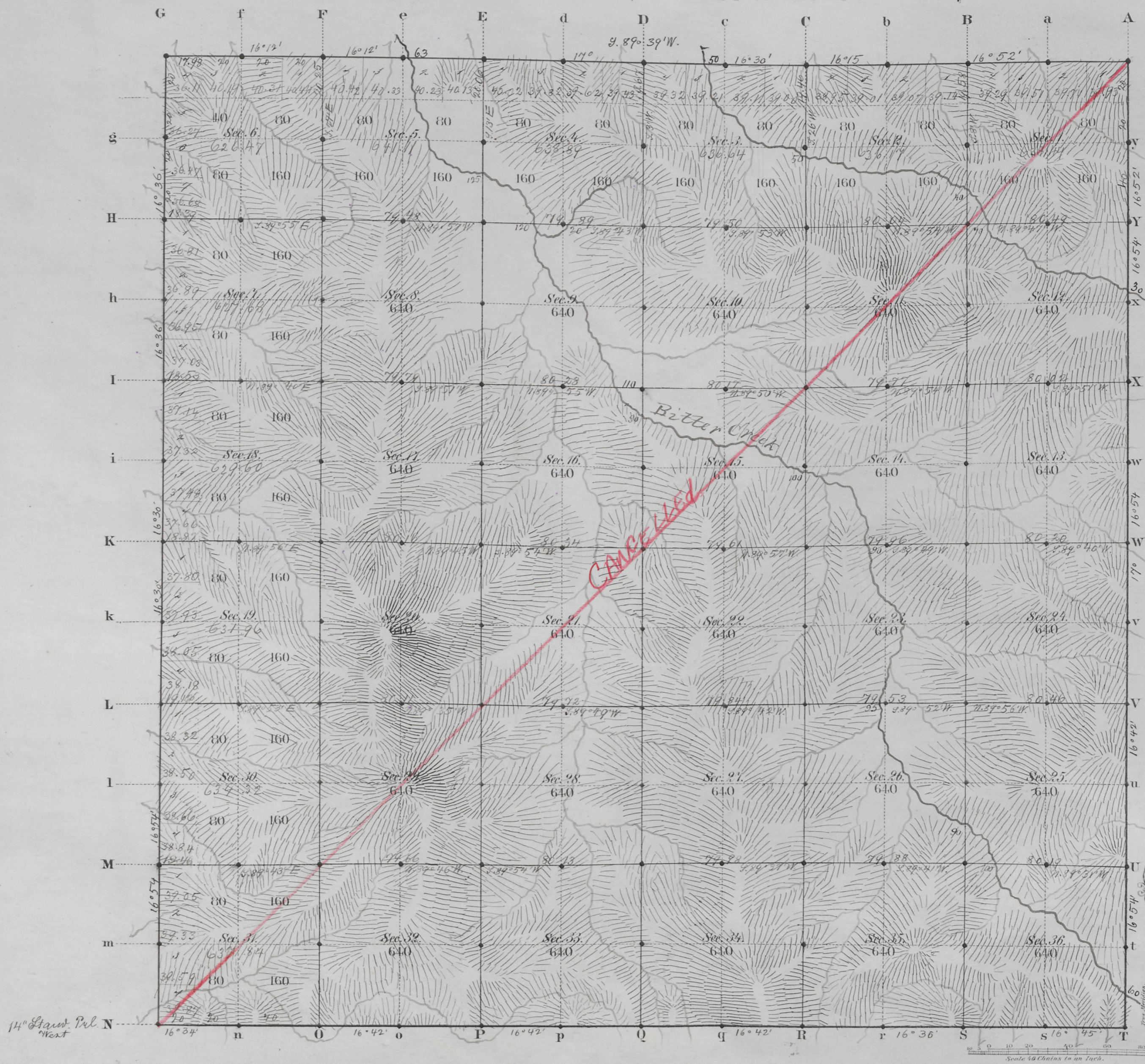
CLAIMS CONFORMING TO LINES OF RESURVEY WITH CHANGED DESCRIPTIONS.

Description by Resurvey				Description by Original Survey							
T.	R.	Sec.	Subdivision	T.	R.	Sec.	Subdivisions	Kind of Entry	Number of Entry	Status in Land Office	Entryman
57	73	19	Lots 7 & 11, E <sup>2</sup> SW <sup>4</sup>	57	73	19	Lots 3 & 4, W <sup>2</sup> SE <sup>4</sup> , E <sup>2</sup> SW <sup>4</sup> , SE <sup>4</sup> NW <sup>4</sup> , SW <sup>4</sup> NE <sup>4</sup>	H.E.	012520	Valid	Lena G. Allen
"	74	24	SE <sup>4</sup> SE <sup>4</sup>								
	"	25	NE <sup>4</sup> NE <sup>4</sup>								
57	74	10	W <sup>2</sup> SW <sup>4</sup>	57	74	10	W <sup>2</sup> SE <sup>4</sup>	S.S.	09767	Paid	Wyoming
57	74	30	Lot 7	57	74	30	SE <sup>4</sup> NW <sup>4</sup>	L.S.	12113	Paid	Santa Barbara Water Co.
57	74	30	SE <sup>4</sup> SW <sup>4</sup>	57	74	30	SE <sup>4</sup> NE <sup>4</sup>	S.A.H.	3097	Paid	Willis M. Spear
57	74	2	SE <sup>4</sup> NW <sup>4</sup> , NE <sup>4</sup> SW <sup>4</sup> , W <sup>2</sup> SE <sup>4</sup>	57	74	1	SW <sup>4</sup> NW <sup>4</sup> , NW <sup>4</sup> SW <sup>4</sup>	H.E.	011184	Valid	William Swanson
						2	Lot 1, SE <sup>4</sup> NE <sup>4</sup>				
57	74	3	Lot 5	58	74	35	SE <sup>4</sup> SW <sup>4</sup> , SW <sup>4</sup> SE <sup>4</sup>	A.H.E.	011610	Valid	William Swanson
		2	Lot 8, SW <sup>4</sup> NW <sup>4</sup>	57	74	2	Lot 2				
57	74	2	SW <sup>4</sup> NE <sup>4</sup>	57	74	1	Lot 4	A.H.E.	011610	Valid	William Swanson
57	74	20	S <sup>2</sup> SE <sup>4</sup>	57	74	21	N <sup>2</sup> SW <sup>4</sup>	S.S.	09767	Patented	Wyoming.
		29	NW <sup>4</sup> NE <sup>4</sup>			20	E <sup>2</sup> SE <sup>4</sup>				
		21	SW <sup>4</sup> SW <sup>4</sup>								

57-74

ACCESSION NO 3820

TOWNSHIP NO 57 NORTH RANGE NO 74 WEST of the 6<sup>TH</sup> Principal MERIDIAN.



Total number of Acres. 22979.12

Surveys Designated	By Whom Surveyed	Date of Contract	Amount of Surveys M <sup>2</sup> Ac <sup>2</sup>	When Surveyed	Magnetic Declination
S.W. Township lines	Ed. F. Stahle	Sept. 21, 1880	17 77 98	Nov. 23, 26, 27, 1883	16° 40' East
Subdivisions	" " "	" " "	50 72 54	Dec. 27-29, 1883	16° 42' "
Connections 14 <sup>th</sup> Stand. P. N.	M. M. Grant	July 12, 1882	6 00 00	March 8, 1883	

The above Map of Township No. 57 North of Range No. 74 West of the Sixth Principal Meridian Wyoming Territory is strictly conformable to the field notes of the survey thereof on file in this Office, which have been examined and approved.

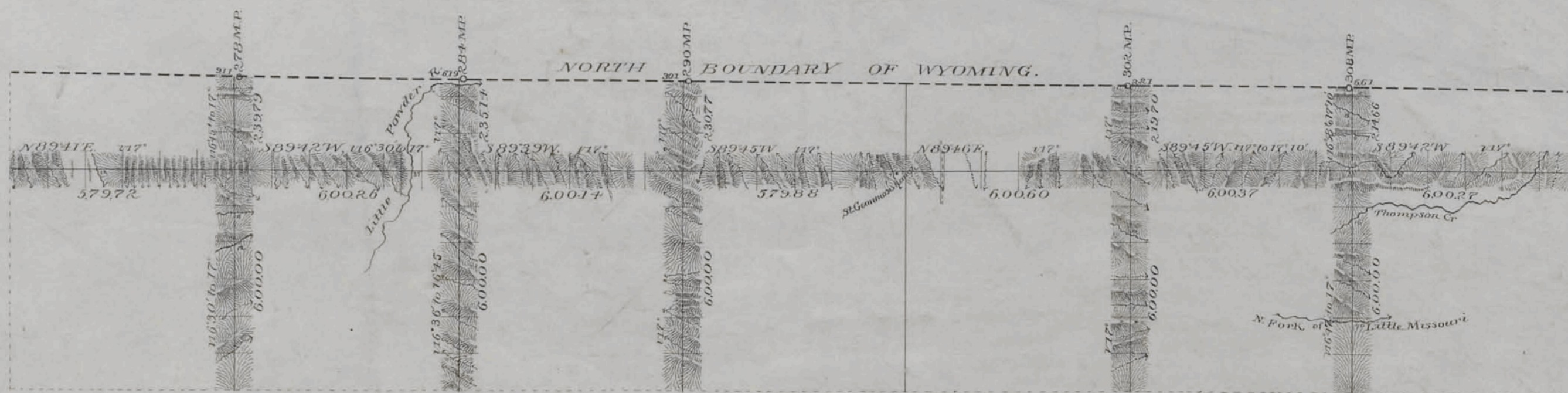
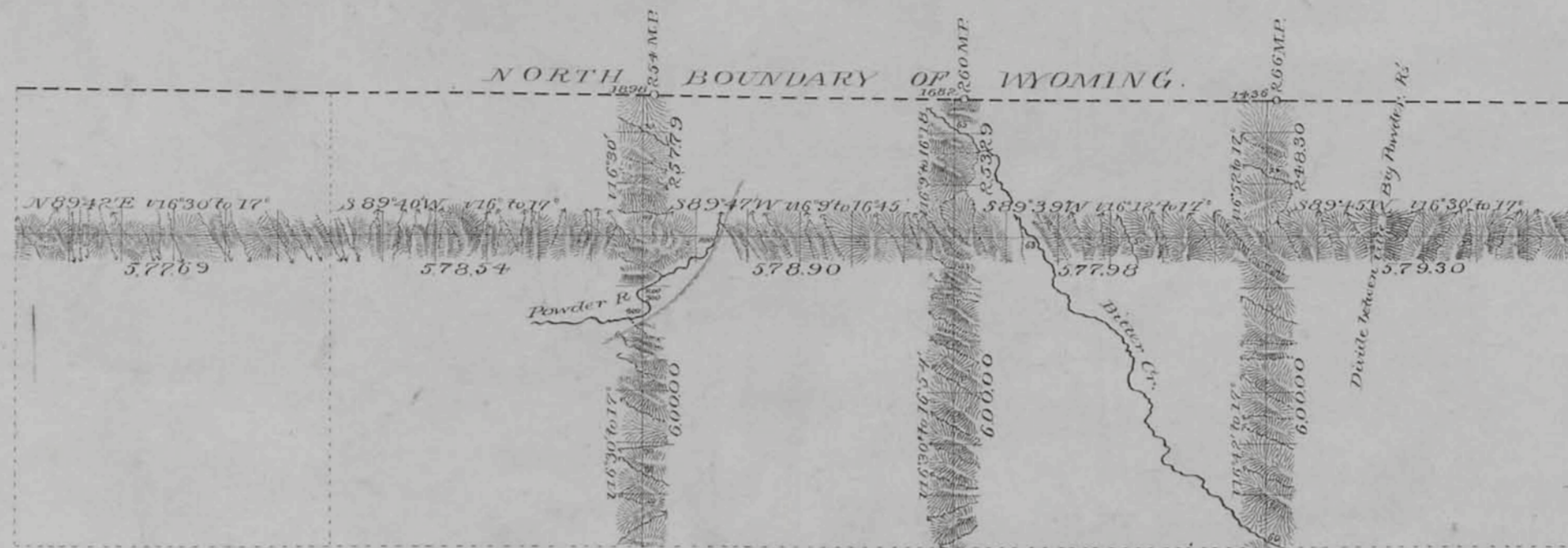
Surveyor General's Office, Edw. C. Davis Sur. Gen.  
Cheyenne Wyoming  
April 30<sup>th</sup> 1884

2236

have  
57-74

# EXTERIOR LINES

Magnetic Variation East. Scale 3 miles to 1 inch



Survey Designated	By Whom Surveyed	Date of Contract	Amount of Surveys		When Surveyed
			M <sup>s</sup>	Chs	
Exterior lines	Rt. F. Staute	Sept 21 <sup>st</sup> 1880	139	53	Nov 10 - Dec 3 1883
Connections	"	"	77	29	"

I hereby certify that the above diagram of the Exterior lines of Tps. 57 & 58 N. Rqs. 66 to 77 inclusive West of the 6<sup>th</sup> P.M. Wyoming Territory is strictly conformable to the field notes of the Survey thereof on file in this Office which have been examined and approved.

Surveyor General's Office  
Cheyenne Wyoming  
April 30<sup>th</sup> 1884

*Edward C. Davis*  
Sur. Gen.

Index (22)

2361

40

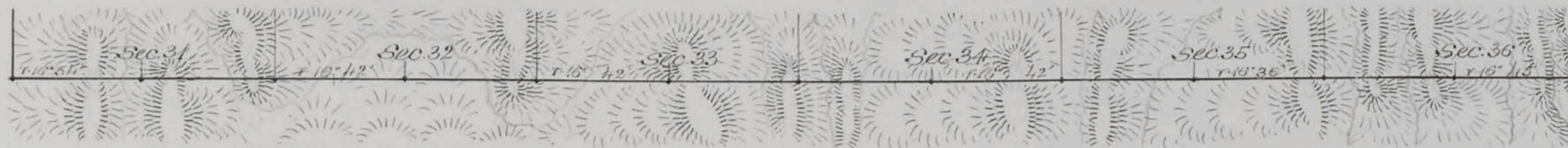
# 14<sup>th</sup> STANDARD PARALLEL NORTH

Along the S. Bd's of Townships 57 N. Rgs 73 & 74 W. of the 6<sup>th</sup> Pr<sup>nc</sup> Mer<sup>dn</sup> Wyo. Ter.

Course West

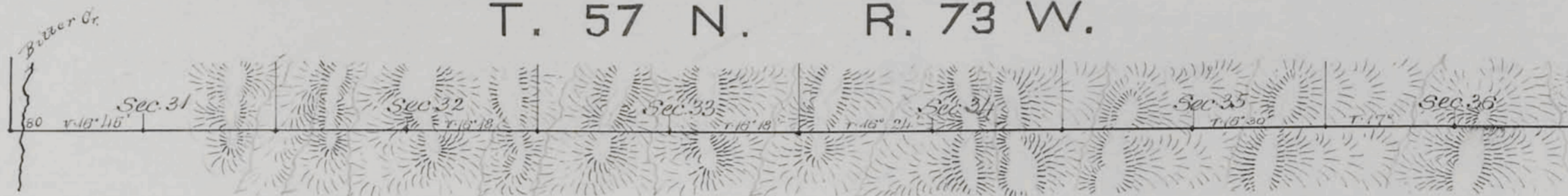
Magnetic Var: East      Scale 40 Chs to 1 Inch

T. 57 N.      R. 74 W.



March 8, 83

T. 57 N.      R. 73 W.



March 8, 83

Surveys Designated	By Whom surr <sup>d</sup>	Date of Contract	Amount of Surveys			When surveyed
			N <sup>o</sup>	Chs	Co	
14 <sup>th</sup> Stand. P <sup>ar</sup> N.	M. N. Grant	July 12, 1882	12	00	00	March 8, 1883

I hereby certify that the above diagrams of the 14<sup>th</sup> Standard Parallel North along S. Bd's of Townships 57 N. Rgs 73 & 74 W. of the 6<sup>th</sup> Principal Meridian Wyoming Territory is strictly conformable to the field notes of the survey thereof on file in this Office which have been examined and approved

Surveyor General's Office

Cheyenne Wyoming Sept 4<sup>th</sup> 1883

Edw. C. David  
Surveyor General.