

FIELD NOTES
STANDARDS, EXTERIORS
AND SUBDIVISIONS

VOL. 73
1879

VOL. 73. Exteriors and Subdivisions

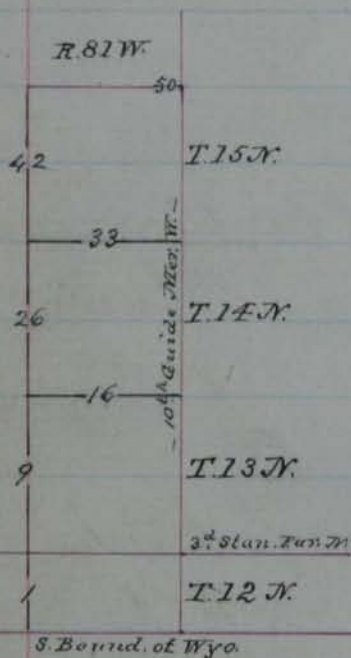
P.

759	2. South	Bdry.	T. 13 N., R. 81 W.
	10. South	"	T. 13 N., R. 82 W.
	22. South	"	T. 13 N., R. 83 W.
	32. South	"	T. 13 N., R. 84 W.
760	69. East	"	T. 12 N., R. 82 W.
	77. East	"	T. 13 N., R. 82 W.
	84. South	"	T. 14 N., R. 81 W.
	94. East	"	T. 14 N., R. 82 W.
	101. South	"	T. 15 N., R. 81 W.
	110. East	"	T. 15 N., R. 82 W.
761	118. South	"	T. 16 N., R. 81 W.
	134. East	"	T. 16 N., R. 82 W.
	144. East	"	T. 12 N., R. 83 W.
	153. East	"	T. 13 N., R. 83 W.
	165. South	"	T. 14 N., R. 82 W.
	173. East	"	T. 14 N., R. 83 W.
762	180. South	"	T. 15 N., R. 82 W.
	192. East	"	T. 15 N., R. 83 W.
	198. South	"	T. 16 N., R. 82 W.
	206. East	"	T. 16 N., R. 83 W.
	213. East	"	T. 12 N., R. 84 W.
	219. East	"	T. 13 N., R. 84 W.
	231. South	"	T. 14 N., R. 83 W.
763	243. East	"	T. 14 N., R. 84 W.
	258. South	"	T. 15 N., R. 83 W.
	265. East	"	T. 15 N., R. 84 W.
	272. South	"	T. 16 N., R. 83 W.
	281. East	"	T. 16 N., R. 84 W.
	288. East	"	T. 12 N., R. 85 W.
	295. East	"	T. 13 N., R. 85 W.
764	307. South	"	T. 14 N., R. 84 W.
	323. East	"	T. 14 N., R. 85 W.
	333. South	"	T. 15 N., R. 84 W.
	341. East	"	T. 15 N., R. 84 W.

(Cont)

764	347. South Bdry.	T. 16 N., R. 84 W.
	354. East "	T. 16 N., R. 85 W.
765	389. Subdivision	T. 16 N., R. 83 W.
766	469. Subdivision	T. 16 N., R. 82 W.
767	551. Subdivision	T. 15 N., R. 83 W.
768	617. Subdivision	T. 15 N., R. 82 W.

Field notes of the survey of the exterior
 lines of T. 12, 13, 14, 15 & R. 81, 82, 83 & 84
 W. of 6th. P.M. Wyo. by Wm. C. Downing
 under his contract of May 12, 1879 (No. 103)
 Survey commenced August 2nd 1879
 Survey completed Sept. 10th 1879



I, Charles H. Fay, do solemnly swear, that I will faithfully execute the duties of Chain-carrier; that I will level the chain upon uneven ground, and plumb the tally pins, whether by sticking or dropping the same; that I will report the true distance to all notable objects and the true length of all lines that I assist in measuring, to the best of my skill and ability.

Charles H. Fay
Chain man

Sworn to and subscribed before me
This 24th day of July A.D. 1879
J. J. Symons
Notary Public

I, Chas McCarthy do solemnly
 swear that-I will faithfully ex-
 ecute the duties of chain carrier
 that-I will level the chain upon
 uneven ground, and plumb the
 tally pins, whether by striking
 or dropping the same; that-I
 will report the true distance to
 all notable objects, and the true
 length of all lines that-I win
 in measuring, to the best of
 my skill and ability.

Chas. McCarthy Chainman

Sworn to and subscribed before
 me this 21st day of July, A.D. 1877

J. J. Symons
 Notary Public

I, John B. Knight do solemnly
 swear that I will faithfully ex-
 ecute the duties of chain carrier;
 that I will level the chain upon
 uneven ground, and plumb the
 tally pins, whether by sticking or
 dropping the same; that I will
 report the true distance to all
 notable objects, and the true
 length of all lines that I assist
 in measuring, to the best of
 my skill and ability.

—
 †

John B. Knight

Sworn to and subscribed before
 me this 21st day of July, A. D. 1879.

J. J. Symons
 Notary Public

John B. Knight did not serve as chairman, the
 other two men being sufficient.

I Thomas Hale do solemnly
swear that I will well and
truly perform the duties
of Arman according to
instructions given me and
to the best of my skill
and ability.

Thomas Hale - Arman

Sworn to and subscribed
before me this 21st day of
July 1879

J. J. Symons
Notary Public

I William Owen do solemnly
swear that I will well and
truly perform the duties of
Flagman according to instruc-
tions given me and to
the best of my skill
and ability
Wm. Owen.

Sworn to and subscribed
before me this 21st day of
July 1879

J. J. Symons
Notary Public

FIELD NOTES

of the
Survey
of theEXTERIOR BOUNDARY
LINES,

O.F.

INDEXED
m.j.h.T_{PS.} 12, 13, 14, 15, AND 16R_{ANGES} 81, 82, 83, 84 W_{1/2} 6 P_M

From the corner to Townships 12^{and} 13. N. Ranges 81^{and} 82 N., on the 3^d Standard Parallel^{N.} (The corner standing and as described in the field notes of the 3^d Standard Parallel^{N.}) running S. between Townships 12. N. Ranges 81^{and} 82 N.

2. 70.
65

~~Between~~ ~~Secs. 12 & 1~~

2 P. m. South between Secs. 1st and 6
Va. $16^{\circ} 35' E$.

From the corner ascending
a N-E slope.

12.00 Top of mountain bet. N-Wth and
S-E.

35.00 Begin descending E. slope of
mountain, and leave heavy
aspen and pine timber.

40.00 A granite stone $15 \times 10 \times 7$ set
10 in. deep, marked $\frac{1}{4}$ on W.
side and in a mound of
stone with pits for $\frac{1}{4}$ Sec.
corner.

73.00 Base of mountain

77.62 West Fork of Big Creek, 22
lks. wide, 6 in. deep, runs N.
 $65^{\circ} E$.

80.00 A granite stone $22 \times 14 \times 5$ set
16 in. deep, marked 1 notch

Between

Ranges 81 and 82 W. 46 P.M.

Chains on the N. edge, and 5 notches on S. edge, in a mound of stone, and with pits for corn, to Secs. 1, 6, 7, and 12

Land rolling and mountainous, unfit for cultivation.

Vegetation: Grass, sage-bush, and 35. chs. of heavy aspen and pine timber.

South between Secs. 7 and 12.

Na. 16° 30' E

5.00 Enter timber, bis. E and W. and begin ascending very steep and rocky N-E. slope of a mountain.

17.00 Along rolling E. slope.

25.00 Leave timber.

29.00 Begin descending rocky and steep S-E. slope.

~~Between~~ ¹⁴ ~~Sp. 12. A.~~

- Chains
- 35.00 Enter timber, hrs E and W.
- 35.60 Base of mountain.
- 35.65 South Fork of Big Creek,
18 lks. wide, 6 in. deep, runs
N. 42° E.
- 37.00 Begin ascending steep and
rocky N. W. slope.
- 40.00 A granite stone 36 x 15 x 8 set
in a large mound of stone
marked 1/4 on W. side for 1/4
Sec. corner.
(No trees convenient.)
- 54.00 Top of mountain, hrs N. E and
S. W.
- 56.00 Leave timber
- 63.00 Begin descending S. slope of
mountain.
- 80.00 A granite stone, 18 x 15 x 6 set
13 in. deep, marked 2 notches
on the N. edge, and 4 notches

Between
Chains

Ranges 81 and 82 N. 46° P.M.

on the S edge, in a mound
of stone and with pits for loc.
to Secs. 7, 12, 13 and 18.

Sand mountainous and broken,
unfit for cultivation.

Veg: Grass, sage-bush and
41. chains of heavy pine and
aspens timber.

South between Secs. 13 and 18.

N. 16° - 14' E.

From the corner descending
mountain.

- 2.00 Base of mountain.
14.00 Begin ascending a N. slope
22.00 Top br. E and W Enter tim-
ber.
25.00 Begin descending.
39.70 Base of mountain.
40.00 A granite stone 18x7x7 set 12

~~Between~~ Feb 12. A.

Chains, in deep, marked $\frac{1}{4}$ on West side, in a mound of stone and with pits, for $\frac{1}{4}$ Sec. corner.

(No trees of required size convenient.)

40.77 Creek 3 lbs. wide, 2 in. deep runs E.

41.00 Begin ascending mountain.

65.00 Top of mountain, bes. E. and W. Thence running over rolling country.

80.00 A granite stone 18 x 9 x 8 set 12 in. deep, marked 3 notches on N. edge, and 3 notches on S edge, in a mound of stone, with pits for cor. to Sec. 13, 18, 19 & 24.

Land rolling, mountainous and rocky, unfit for cultivation.

Return

Ranges 81 and 82 No. 6 P.M.
 Chund Veg.: Grass, sage-bush and
 58. chs. of heavy pine and
 aspen timber.

South between Secs. 19 and 24
 Va. $16^{\circ} 28' E$.

From the corner running
 over rolling country.

5.80

Intersect the S. boundary
 line of Wyoming Territory
 at a point 4.90 chs. E. of the
 131st mile post on said
 boundary line, at which
 point I set a granite stone
 18 x 4 x 6 set 12 in. deep, marked
 C.C. on N. side, and in a mound
 of stone with pits for clos-
 ing corner to Secs. 19 and 24.
 No trees of required size con-
 venient. The S. Bound. of Wyo. deflects 9.95 chs.
 per mile & is 32 links per mile, short in measurement.

76. *Peterson* of 6th p. 11
~~71~~ ~~Plot~~ 12. N. Rgs. 81 and 82

Chains land rolling and mountainous
unfit for cultivation.
Veg.: Grass, and 5.80 chs. of
heavy young pine and aspen
timber.

Surveyed Aug. 2-1879

General Description:

The country all along this
line is very rough and moun-
tainous, and generally
speaking, is covered with
heavy pine timber. The land
is unfit for cultivation, but
where timber is absent, ^{it} is
a good grazing country. The
country is well watered
by numerous streams of
clear and pure water.

77. *A. between* 72 of 6th P. 16
Bet. Tps. 13, Rgs. 81 and 82 N.
Chains

From the corner to Townships 12 and 13, N. Ranges 81 and 82 N. on the 3^d Standard Parallel running N. ^N between in Tps. 13, N. Rgs. 81 and 82 N.

North between Secs. 31 and 36
Va. 16° E.

From the corner descending N.E. slope of mountain

16.50 Begin running along rolling E. slope.

40.00 A granite stone 18x16x8 set 13 in. deep, marked "4" on W. side, in a mound of stone and with pits for "4" Sec. cor.

80.00 A granite stone 18x12x6 set 14 in. deep, marked 1

~~Between Tps. 13. N.~~

Chains notch on S. edge and 5 notches
on N. edge, and in a mound
of stone for corner to Secs.
25, 30, 31, and 36.

From which a
Pine, in diam. brs. S. 50° W. 28 lks dist
" 4 " " " S 25° E 5 " "
Aspen 4 " " " N. 72° W. 90 " "

Sand mountainous and broken
soil 3^d rate.

Veg.: Grass and 80 chs. of heavy
aspen and pine timber.

North between Secs. 25 and 30.
Na. 16°-38' E.

- 1.60 A ravine, runs E
4.00 Leave timber and begin
ascending S.E. slope of
mountain.
16.00 Enter timber and begin

Between Ranges 81 and 82 N. of 6. P.M.

Chain running along rolling E. slope.

29.00 Begin descending N. E. slope.

40.00 A granite stone 16 x 12 x 5 set 11 in. deep, marked "4" on W. side, and in a mound of stone for "4" Sec. corner.

From which a

line is drawn. brs. N. 82° W. 4 1/2 lks. dist.

48.20 Base of slope.

48.90 Creek 3 lks. wide, 3 in. deep runs N. 72° E.

49.90 Leave timber and begin ascending a S. E. slope.

54.00 Along rolling E. slope.

55.20 Enter timber, brs. S. W. and E.

60.00 Begin descending rolling N. E. slope.

75.00 Leave timber.

80.00 A granite stone 18 x 16 x 6

75

~~Between~~ Sp. 13. N.

Chamset 14 in. deep, marked 2 notches on S. edge, and 4 notches on N. edge, in a mound of stone, ~~and~~ with pits for bor. to Secs. 19, 24, 25 and 30.

Sand rolling and mountainous soil 3 d. rate.

Veg: Grass and sage brush and 57.70 ^{6W.} of heavy pine timber and aspen timber.

North between Secs. 19 and 24
Na. 16° 35' E.

- 9.00 Base of mountain and strikes open prairie, bears E and W.
- 15.00 Enter grove of timber brs E + W.
- 21.00 Leave timber.
- 40.00 A granite stone 18x14x8 set 13 in. deep, marked 14 on W. side.

Between Ranges 81 and 82 N. of 6. P.M.

Champion a mound of stone, and
with pits for 14 Sec. Cor.

80.00 A granite stone 18 x 12 x 12, set
12 in. deep, marked 3 notches
on S. edge, and 3 notches on N.
edge, in a mound of stone
and with pits for Cor. to Secs.
13, 18, 19 and 21.

Sand rolling prairie; soil
third rate.

Veg.: Grass and sage brush,
and trchs. of heavy aspen timber.

North between Secs. 13 and 18.

N. $16^{\circ} 15' E.$

From the Cor. running over
rolling prairie.

40.00 White quartz 14 x 12 x 4 set 10 in.
deep (too hard to mark) in
a mound of earth and stone

~~Between Secs 13 & 14~~

Chain^{ed} with pits for $\frac{1}{4}$ sec. cor.

80.00 White quartz, 15 x 12 x 10 set 1
in. deep, marked 4 notches
on S. Edge^{ed} and 2 notches on N.
edge, in a mound of earth
and stons, and with pits for
cor. to Secs. 7, 12, 13, and 18.
Sand rolling; soil Third rate
Veg.: Grass^{ed} and sage brush.

Surveyed Aug 4th. 1879.

North between Secs. 7^{and} 12
Na. $16^{\circ} 22' E$.

0.60 Cherokee road, brs. N. $42^{\circ} W$
and S. $44^{\circ} E$.

8.40 A creek 3 lks. wide, 2 in. deep
runs N. $86^{\circ} E$.

40.00 White quartz 12 x 8 x 6 set 6 in.
deep, marked $\frac{1}{4}$ on N. side

Between

Ranges 81 and 82 W. of 6. P.M.
 placed in a mound of earth and
 stone, with pits for $\frac{1}{4}$ Sec.
 Cor.

80.00 A granite stone $14 \times 10 \times 5$ set
 9 in. deep, marked 5 notches
 on S. edge, and 1 notch on N. edge,
 in a mound of earth and stone
 and with pits for Cor. to Secs.
 1, 6, 7, and 12.

Sand rolling.

Soil Third rate.

Veg.: Grass and sage bush.

North between Secs. 1 and 6.

Na. $16^{\circ} 35' E$.

40.00 A granite stone $10 \times 10 \times 10$ set
 7 in. deep, marked $\frac{1}{4}$ on W.
 side, and in a mound of earth
 and with pits for $\frac{1}{4}$ Sec. Cor.

68.00

80.00

Begin ascending bluff.

A granite stone $18 \times 16 \times 8$ set

79

Between Tps. 13^{and}
 Chams 12 in. deep, marked 6 notches
 on the South, East, North
 and West sides; said cor. sets
 in a mound of stone 3 ft. high
 and 4 ft. base, and with pits for
 cor. to Townships 13^{and} 14. N.
 Ranges 81^{and} 82 W.
 Land undulating and rolling.
 Soil third rate.
 Veg.: Grass and sage brush.

Surveyed Aug. 5th 1879.

From the cor. to Tps. 13^{and}
 14 N. Ranges 81^{and} 82 W.
 I run
 East on a random
 line between Tps. 13^{and} 14 N.
 Range 81 W. I set temporary

14th N. Range & 1 W. of 6th P. M.

Chains 14 Sec. and Sec. Cor. at every
40^{and} 80 chains

I find the Township line to be
5 miles and 78.30 chs. in length,
and the falling to be 3.26 chs.
North of the corner to Tps. 13
and 14 N. Ranges 80^{and} 81 West.

The reason for this great
falling is that the Eastern
boundary of this Township
passes over some very rough
and broken country, whereas
the Western boundary passes
over a comparatively smooth
country.

The correction of the above
line will therefore be 1.70
chs. N. and 5³/₁₆ chs. S. per mile.

Between Tps. 13rd and
 Chans from the Cor. to Tps. 13rd and 14th
 N. Rngs. 80th and 81st W. I run N.
 89° 37' W. on a true line
 between Secs. 1st and 36.

N. 16° 15' E.

From the Cor. descending
 Mountain.

- 8.20 Base of mountain.
- 8.52 Right bank of North Platte
 river, 20 in. deep, runs N.
 15° W.
- 12.26 Left bank of North Platte
 river
- 16.00 Begin ascending mountain
- 35.00 Begin running along very
 steep S. slope.
- 40.00 A granite stone 15 x 12 x 8 set
 10 in. deep, marked "4" on N.
 side, in a mound of stone
 with pits for "4" Sec. Cor.

W. N. Range 81 W. of 6th P. M.

- 42.00 Begin ascending E. slope of mountain.
- 53.00 Top bet. N. and S. Thence running over rolling country.
- 73.00 Begin descending W. slope.
- 80.00 A granite stone 18x14x10 set 13 in. deep, marked 1 notch on E. edge, and 5 notches on W. edge, in a mound of stone for corner to Secs. 1, 2, 35 and 36. Land mountainous and broken, very stony, unfit for cultivation. Veg.: Grass and sage brush.

N. $89^{\circ}37'W.$ on a true line between Secs. 2 and 35.

Var. $16^{\circ}28'E.$

- 7.70 Base of mountain and enter heavy young aspen timber,

20
83

Between Tps. 13 and

Chambers N. E. and S. W. and begin running along a S. slope.

40.00 A granite stone 16 x 14 x 10 set 11 in. deep, marked 14 on N. side, and in a mound of stone for 14 Sec. Cor.

From which a
fir 4 in. diam. brs. S. 40° W. 10 lks. dist.

" 5 " " " N. 10° E. 9 " "

56.00 Begin ascending S. E. slope.

75.00 Leave timber.

79.00 Top of slope brs. N. E. and S. Thence over rocky and rolling country.

80.00 A granite stone 18 x 16 x 10 set 14 in. deep, marked 2 notches on E. edge, and 4 notches on W. edge, and in a mound of stone for Cor. to Secs. 2, 3, 34 and 35.

14. N. Range 81 W. of 6th N. Mer.

Chains and mountains and
 stony, unfit for cultivation.
 Veg.: Grass & sage brush and
 by chs. of heavy Aspen timber.

Aug. 6th. 1879

^{on a true line}
 N. $89^{\circ}37'W$. bet. Secs. 3 and 34
 Pa. $16^{\circ}28'E$.

From the cor. over rolling
 country.

40.00 A granite stone $24 \times 12 \times 10$ set
 16 in. deep, marked "4" on N.
 side, and in a mound of stone
 with pits for "4" Sec. Cor.

62.00 Begin descending W. slope

79.50 Base of ridge, thence over
 rolling and stony country.

80.00 A granite stone $20 \times 14 \times 8$ set
 14 in. deep, marked 3 notches
 on E. edge, and 3 notches on
 W. edge, in a mound of

22
85

90.

Between Tps 13^{and}
Cham, earth^{and} stone, with pits for
Cor. to Secs. 3, 4, 33, ^{and} 34.
Sand rolling ^{and} stony, unfit
for cultivation.
Veg.: Grass ^{and} sage brush.

N. $89^{\circ} 37' W$. ^{on a true line} between Secs.
4 ^{and} 33.

N. $16^{\circ} 55' E$.

From the corner running
over rolling ^{and} stony coun-
try.

40.00 A granite stone 12x10x8 set
8 in. deep, marked "4" on N.
side, ^{and} in a mound of stone
for "4" Sec. Cor.

80.00 A granite stone 18x14x6 set
14 in. deep, marked 4 notches
on E. ^{and} 2 notches on W. edge
in a mound of stone, ^{and}

W.A. Ransom 81 W. of 6th. Pr. Aben.

Chains with pits for cor. to Secs. 4,
5, 32 and 33

Sand rolling and very stony,
unfit for cultivation.

Veg. Grass and sage brush.

one true line
N. $89^{\circ} 37' W$ between Secs. 5
and 32.

N. $16^{\circ} 40' E$

2.20 Right bank of Big Creek.
10 in. deep, runs N. $5^{\circ} W$.

4.90 Left bank of same.

40.00 A granite stone $16 \times 14 \times 4$ set
10 in. deep, marked $\frac{1}{4}$ on N.
side, and in a mound of
earth, with pits for $\frac{1}{4}$
Sec. cor.

40.20 Begin ascending bluff

78.00 Top of bluff, bet. N and S and
Begin descending.

248788

92.

Between Eps. 13^{and}

80.00

A granite stone 20 x 12 x 6
set 16 in. deep, marked
5 notches on E. edge, ^{and} 1
notch on W. edge, in a
mound of earth ^{and} with
pits for cor. to Secs. 5, 6,
31 ^{and} 32.

Sand rolling.

Soil Third rate.

Veg.: Grass ^{and} sage brush.

on a true line

N. 89° 37' W. between Secs. 6
^{and} 31.

N. 16° 30' E

From the cor. descending

32.00

Base of Bluff.

40.00

Granite stone 26 x 16 x 6 set
16 in. deep, marked 1/4 on N.
side, ^{and} in a mound of
earth, with pits for 1/4 Sec

14. N. Range 81 W. of 6th P. M.
Chain Cor.

- 44.00 Begin ascending bluff.
- 65.00 Along S. slope of bluff.
- 78.30 The Cor. to Tps. 13rd and 14. N. Ranges 81st and 82 W. Sand rolling. Soil 3rd rate. Veg.: Grass and sage brush.

Surveyed Aug ~~7~~ 7-1879.

General Description of T. 13 R. 81 W.

The country embraced within this township, consists of rolling and hilly country. Soil about third rate. In the extreme S.W. portion of the Township

~~Between~~ Tps. 14 N

Chains there is a fine body of
 aspen ^{and} pine timber.
 The Sp. is well watered
 and is especially adapted
 to stock growing.

From the Cor. to Tps. 13
 and 14 N. Ranges 81 ^{and} 82 W.
 running North ⁱⁿ ~~between~~
^{between} Tps. 14 N. Rngs. 81 ^{and} 82 W.

North between Secs. 31 ^{and}
 36.

Va. $16^{\circ}20'E$.

From the Cor. ascending
 bluff

- 10.00 Top of same br. S.W. ^{and} N.E.
 26.00 Base of Bluff.
 26.90 Creek 4 lks. wide 2 in.

95

90 27

Between Ranges 81 and 82 W. of 46th P.M.

Chain deep, runs N. 86° E.

40.00 A granite stone 18x10x4
set 13 in. deep, marked "4
on W. side, in a mound
of earth, and with pits for
1/4 Sec. Cor.

80.00 A granite stone 10x8x7 set
7 in. deep, marked 1 notch
on S. edge, and 5 notches on
N. edge, in a mound of earth
and with pits for Cor. to Secs.
25, 30, 31 and 36

Sand rolling.

Soil third rate.

Veg. Grass and sage brush.

North between Secs. 25 & 30.

Nä 15° 50' E.

From the corner running
over rolling country.

2891 96. 17
~~Between~~ Sp. 14. N.

40.00 A granite stone 18x14x10 set
13 in. deep, marked $\frac{1}{4}$ on W.
side in a mound of earth,
and with pits for $\frac{1}{4}$ Sec. cor.

50.00 A granite stone 15x10x5 set
10 in. deep, marked 2 notches
on the S. edge and 4 notches
on N. edge, in a mound of
earth, with pits, for cor.
to Secs. 19, 24, 25 and 30.

Sand rolling and stony, unfit
for cultivation.

Veg.: Grass and sage brush.

N. between Secs 19 and 24
Na. $14^{\circ} 30' E$.

From the corner running
over rolling and stony country

40.00 A granite stone 18x12x10 set

Between Ranges 81^{and} 82 W. of 6th P.M.

Chains 14 in. deep, marked $\frac{1}{4}$ on W. side, in a mound of earth and with pits for $\frac{1}{4}$ Sec. cor.

50.00 A granite stone 18 x 10 x 7 set 13 in. deep, marked 3 notches on S^{and} 3 notches on N. edge, and in a mound of earth and stone, with pits for Cor. to Secs. 13, 18, 19^{and} 24.

Sand rolling, unfit for cultivation.

Veg.: Grass and sage-brush.

North between Secs. 13^{and} 18.

Pa. 16° 20' E.

Running over rolling country.

40.00 A granite stone 10 x 9 x 6 set 7 in. deep, marked $\frac{1}{4}$ on W. side and in a mound of earth with

30
93

~~Between Tps. 14. N~~

Champsites for 1/4 Sec. Cor.

- 53.00 Begin ascending rocky S. slope
 - 67.00 Top, brs. N. $86^{\circ} 0'$ and S. $87^{\circ} 0'$ W.
 - 68.00 Begin descending.
 - 80.00 A granite stone 18 x 12 x 5, set 14 in. deep, marked 4 notches on S. and 2 notches on N. edges, and in a mound of stone with pits for Cor. to Secs. 7, 12, 13 and 18.
- Sand rolling and rocky, unfit for cultivation.
Veg. Grass and sage brush.

North between Secs. 7 and 12.
N. $16^{\circ} 12' E$.

- From the corner descending.
- 19.20 Base of slope.
- 20.00 Creek 7 fks. wide 3 in. deep runs E.
- 30.00 Begin running along parallel

- Between Ranges 81 and 82 N. 46. 7. 7. m.
- Champanish. North Platte river and
about 6 chs. West of the left
bank of said river
- 40.00 A granite boulder 15 x 10 x
10 set 10 in. deep, marked
14 on W. side, and in a mound
of stone with pits for 14
Sec. Cor.
- 41.00 Begin running along rolling
E. slope.
- 77.00 Base of slope and enter
river bottom.
- 80.00 A granite boulder 15 x 15 x 12
set 10 in. deep, marked 5
notches on S. edge and 1
notch on N. edge, and in a
mound of stone for corner
to Secs. 1, 6, 7, and 12.
Sand rolling and hilly,
unfit for cultivation.

95 ² 100. ^{between}
Bet. Tps. 14. N. Rgs. 81 and 82 W. ^{1/4}
Chains Veg: Grass ^{and} Sage brush.

North between Secs 1 and 6.

Na. $16^{\circ} 20' E$.

0.05 Left bank of North Platte
river, 18 mi. deep, runs N.
 $30^{\circ} W$.

5.80 Right bank of same.

40.00 A quartz boulder 15 x 11 x 7 set
10 mi. deep, marked $1/4$ on W.
side ^{and} in a mound of earth
with pits for $1/4$ Sec. Cor.

50.00 Begin ascending rolling S.
slope.

79.70 Top of same bis E and W.

80.00 A granite stone 20 x 20 x 10
set 14 mi. deep, marked 6
notches on the N. side, ~~and~~ 6 on
S, ~~and~~ 6 on E and 6 on W. sides;
said corner sets in a large

Part. Tps. 14^{and} 15. N Range 81 W. of

Chains, mound of stone, ~~and~~ with
pits for bor. to Tps. 14^{and}
15. N. Rgs 81^{and} 82 W.

Sand, rolling, unfit for culti-
vation.

Veg.: Grass ^{and} sage-bush.

Surveyed Aug 8, 1879

From the bor. to Tps. 14^{and}
15. N. Rgs 81^{and} 82 W. I run
E. on a random line be-
tween Tps. 14^{and} 15. N. Rg. 81
W.

I set temporary ^{1/4} Sec. ^{and}
Sec. corners at points 40^{and}
80 chs. I find the length of
this line to be 5 miles ^{and}
78.18 chs. ^{and} the falling to

34
97

102.

Between Tps 14^{and}
Chambers 306 lks. North of the Cor.
to Tps. 14^{and} 15. N. Ranges
80^{and} 81 W.

The correction for this line
will therefore be $5\frac{1}{2}$ lks. S.
and 1.82 chs. W. per mile.

From the Cor. to Tps. 14
and 15. N. Rgs 80^{and} 81 W.

Sum

North $89^{\circ}38'W$. on a true
line between Secs 1^{and} 36.

Na. $16^{\circ}22'E$.

From the corner descending
a S.W. slope.

3.00 Base^{and} begin ascending S.E.
slope.

26.00 Top brs. N.E. and S.W. Thence
running over rolling moun-
tain top

40.00 White quartz $16 \times 8 \times 7$ set 11, in.

15. N Range 81 N. of 6th P. M.

Trans. deep, marked "4" on N side
and in a mound of stone
with pits for "4 Sec. Cor.

From which a
Pine 10 in diam. br. 1.18 lbs. dist.

" 7 " " S 3° E 28 " "

70.00 Begin ascending E. slope.

80.00 A granite stone 18 x 10 x 5 set 12
in. deep, marked 1 notch on E.
edge, and 5 notches on W. edge, and
in a mound of stone with pits
for Cor. to Secs. 1, 2, 35 and 36.
No trees of required size con-
venient.

Sand mountainous, unfit
for cultivation.

Veg: Grass and 80. chs. of heavy
Pine timber

on a true line

N. 89° 38' W. between Secs 2 & 35

Between Sp. 14 and
Chains Va: 16° 25' E

- 3.80 Top of ridge, bis. N. and S.
- 9.00 Begin descending.
- 31.00 Base of mountain or ridge,
thence over rolling country.
- 40.00 A granite stone 15x10x6 set
10 in. deep, marked "4 on N.
side, and in a large mound of
stone, for "4 Sec. Cor.
No trees of required size con-
venient.
- 46.00 Begin descending.
- 80.00 A granite stone 18x12x7 set
12 in. deep, marked 2 notches
on E. edge, and 4 notches on W.
edge, and in a mound of stone
for Cor. to Secs. 2, 3, 34 and 35
From which a
line 11 in. diam. br. S. 40° W. 17 lks. dist.
" 10 . . . " N. 38° E. 38 . . .

15. N. Range 81 W. of 6th P. M.

Chains land rolling and mountainous,
unfit for cultivation.

Veg: Grass and rocks of heavy
pine and aspen timber.

on a true line

N. $89^{\circ}38'W$ between Secs. 3rd and 3rd
Va. $16^{\circ}25'E$.

- 10.00 Begin running along a N.
Slope.
- 25.00 Begin ascending mountain.
- 40.00 A granite stone $18 \times 12 \times 4$ set
11 in deep, marked "4" on N.
side, and in a mound of stone
for "4" Sec. Cor.
- 46.00 Top of mountain bis S.W. and
N.E.
- 48.00 Begin descending a very
steep N.W. slope.
- 77.00 Leave heavy aspen timber.
- 80.00 A granite stone $18 \times 12 \times 10$ set

Between Tps. 14^{and}

Chains 11 mi. deep, marked 3 notches
on E. edge, ^{and} 3 notches on W.
edge ^{and} in a mound of stone
for Cor. to Secs. 3, 4, 33^{and} 34.
Land mountainous, unfit for
cultivation.

Veg. Grass ^{and} 77 chs. of heavy
aspen timber.

on a true line

N. $89^{\circ}38'W$ bet. Secs. 4^{and} 33,
N. $16^{\circ}25'E$.

From Cor. descending steep
N. W. slope of mountain.

36.00 Base of mountain.

38.50 Old French Creek road bet.
N. E. ^{and} S. W.

40.00 A granite boulder 18 x 10 x 8, ^{and}
14 mi. deep, marked ¹⁴ on N.
side ^{and} in a mound of stones
for ¹⁴ Sec. Cor.

Between Cps. 11th and

Chains 11 mi. deep, marked 3 notches
on E. edge, and 3 notches on W.
edge, and in a mound of stone
for cor. to Secs. 3, 4, 33rd and 34.
Land mountainous, unfit for
cultivation.
Veg. Grass and 77 chs. of heavy
aspen timber.

on a true line
N. 89° 38' W. bet. Secs. 4th and 33.
N. 16° 25' E.

From cor. descending steep
N. W. slope of mountain.

36.00

Base of mountain.

38.50

Old bunch creek road bet.
N. E. and S. W.

40.00

A granite boulder 18 x 10 x 8^{ft} or
14 in. deep, marked 4 on N.
side and in a mound of stone
for 1/4 Sec. cor.

65. N Range 81 W. of 6th P.M.
 43.20 French Creek, 2 blks. wide,
 5 mi. deep, runs S. 56° W.

47.20 Begin ascending a S.E. slope.

50.00 A granite stone 20x14x6 set
 14 mi. deep, marked 4 notches
 on the E edge, and 2 notches on
 W edge, and in a large mound
 of stone for cor. to Secs. 4, 5,
 32, and 33.

Land rolling and mountainous,
 unfit for cultivation.
 Veg: Grass and sage brush.

^{only true line}
 N. 89° 38' W. between Secs 5 and 32.
 Na. 16° 25' E.

From the cor. ascending a
 S.E. slope.

30.00 Top cor. N.E. and S.W.

31.00 Begin descending N.W. slope.

40.00 A granite stone 16x15x8 set

46
103.

108.

Between Tps. 14^{and} and
Chams 11 in. deep, marked 14 on N.
side, and in a mound of stone
for 14 Sec. Cor.

50.00 Base of mountain, and begin
ascending gently.

61.00 Over rolling country.

66.00 Begin descending N.W. slope.

80.00 A granite stone 22 x 12 x 10
set 14 in. deep, marked 5
notches on E. edge, 1 notch on
W. edge, and in a large mound
of stone for Cor. to Secs. 5, 6,
31^{and} 32.

Land mountainous, unfit for
cultivation.

Veg.: Grass^{and} sage brush.

Surveyed Aug 9, 1879

on a true line

N. 89° 38' W. between Secs. 6^{and} 31,

15. N. Range 81 W. of 6th P.M.
 Chams Pa. 16° 20' E.

From the cor. Descending over rolling country.

5.00 Descending S.W. slope.

40.00 A granite stone 16x14x7 set 10 in. deep, marked $\frac{1}{4}$ on N. side and in a mound of stone for $\frac{1}{4}$ sec. cor.

45.00 Begin descending over rolling and broken Western slope.

78.15 The cor. to Sp. 14 and 15 N. Rgs. 81 and 82 W.

Land mountainous and rolling, unfit for cultivation.
 Veg. Grass and sage brush.

General Description:

of
 Sp. 14 N. Rg. 81 W.
 The surface of this Township

42
105

110.

~~Between Tps. 15. N.~~

Chauss consists of rolling ^{and} mountainous country, unfit for cultivation. The N.E. portion is covered with a heavy growth of pine ^{and} aspen timber.

* From the Cor. to Townships 14^{and} 15. N. Rgs. 81^{and} 82 W. running ⁱⁿ ~~between~~ Tps. 15. N. ^{between} Rgs. 81^{and} 82 W.

North bet. Secs. 31^{and} 36,
No. 16° 20' E.

- 2.00 Begin descending.
23.00 Base of slope.
40.00 A granite stone 12x8x8 set 9 in. deep, marked "4 on W. side, and in a mound of

Between

Ranges 81 and 82 ^{of the P.M.}
 Cham stones, with pits for $\frac{1}{4}$ Sec.
 Cor.

58.90 Temporary road, bet. E and W.

80.00 A granite stone 10x8x7 set
 7 in. deep, marked 1 notch
 on S. edge, and 5 notches on N.
 edge, in a mound of stone
 with pits for Cor. To Secs.
 25, 30, 31 and 36.

Sand rolling and hilly, unfit
 for cultivation.

Veg. Grass and sage brush.

North bet. Secs. 25 and 30.

Na. $16^{\circ} 25' E$.

32.43 Dry Creek bed, runs W.

40.00 A granite stone 18x12x10 set
 12 in. deep, marked $\frac{1}{4}$ on
 W. side, and in a mound of
 stone, with pits for $\frac{1}{4}$ Sec.

44 107 ~~Between~~ ^{112.} ¹⁴ ~~Chs.~~ 15. A

Chamscorner.

80.00 A granite stone 24x15x4 set
16 in. deep, marked 2 notches
on S. edge, and 4 notches on
N. edge, and in a mound of
earth and stone, with pits
for bor. To Secs, 19, 24, 25 and
30.

Sand rolling, unfit for cul-
tivation.

Veg: Grass and sage brush.

North bet. Secs, 19 and 24.

Na. 16° 22' E.

26.02 Temporary road, bet. N.W.
and S.E.

40.00 A granite stone 10x10x6 set
7 in. deep, marked 1/4 on N.
side, and in a mound of
stone, with pits for 1/4

Between

Ranges 81 and 82 N. of 6th P.M.
Trans Sec. Cor.

56.45 Creek 7/8ths wide, 3 in. deep,
runs N. 37° W.

70.00 A granite stone 38 x 8 x 4 in.
20 in. deep, marked 3 notches
on S, and 3 notches on N. edge,
and in a mound of stone
with pits for Cor. to Secs.
13, 18, 19, and 24.

Land rolling, unfit for cul-
tivation.

Veg.: Grass and sage brush.

North bet. Secs. 13 and 18.

N. 16° 20' E.

Running over ^{very} heavy rolling
ground.

19.10 Temporary road, bet. E and W.

28.00 Begin descending mountain.

36.00 Base of mountain.

46
109

774.

~~Between~~ 15. A

36.05 ^{Chains} Creek 10 lbs. wide, 6 in. deep
runs W.

37.00 Begin ascending.

40.00 Sand stone 18 x 7 x 6 set 12
marked $\frac{1}{4}$ on W. side
in. deep, in a mound of
stone and with pits for 14
Sec. box

68.50 Top of mountain brs. nearly
E. and W.

69.00 Begin descending.

75.00 Base of mountain and
ravine runs W.

75.10 Begin ascending.

80.00 A piece of micaceous shale
15 x 10 x 8 set 10 in. deep, and
in a mound of stone,
marked 4 notches on S.
edge, and 2 notches on N.
edge for box to Decs. 7, 12
13 and 18

between Ranges 81 and 82 W. ^{of 6. P.M.}

lands rolling and mountainous, unfit for cultivation, Veg.: Grass and sage brush.

North between Secs. 7 and 12,
 N. $16^{\circ} 25' E$.

- 3.00 Top br. E. and W. and begin descending.
- 9.50 Base and begin ascending.
- 27.00 Top, br. E. and W. and begin descending.
- 38.00 Base of mountain.
- 38.10 Creek 12 lbs. wide 6 in. deep, runs W.
- 38.20 Begin ascending.
- 40.00 A granite stone 18 x 12 x 10 set 13 in. deep, marked $\frac{1}{4}$ on W. side in a mound of stone, and with pits for $\frac{1}{4}$

#8 111, ~~Between~~ ^{113.} ~~Secs.~~ 15 N.

Chains Sec. Cor.

54.00 Top hrs. N. $88^{\circ}W$. and S $86^{\circ}E$.

55.00 Begin descending.

74.00 Base of mountain.

79.⁵/₁₀ Creek 28 lbs. wide, 6 in. deep runs S $42^{\circ}W$.

80.00 A granite stone $30 \times 24 \times 4$ set 20 in. deep, marked 5 notches on S and 1 notch on N. edge, and in a large mound of stone for Cor. to Secs. 1, 6, 7 and 12.

Land rolling and mountainous unfit for cultivation.

Veg.: Grass and sage brush.

North between Secs. 1 and 6
Na. $16^{\circ}25'E$.

3.00 Begin ascending rolling S. slope.

Station Ranges 81 and 82 W. ^{at P.M.}

40.00 A granite stone 20x12x5
set 14 in. deep, marked "4"
on W. side, in a mound
of stone and with pits for "4"
Sec. Cor.

67.00 Enter heavy timber

70.00 Top of mountain brs. E. and
W.

71.00 Descending gentle N.W.
slope.

80.00 A granite stone 30x30x12
set 22 in. deep, marked
with 6 notches on N. S. E. and
W. sides, in a large mound
of stone and with pits for
corner to Tps. 15 and 16 N.
Rngs 81 and 82 W.

Land mountainous, unfit
for cultivation.

Veg.: Grass and 13 chs. of

Between Tps. 15th and
Chains heavy aspen timber

Surveyed Aug. 11, 1879.

From the Cor. to Tps. 15th
16th N. Ranges 81st and 82nd W. I run
E. on a random line be-
tween Townships 15th and 16th
N. Rg. 81 W.

I set temporary $\frac{1}{4}$ Sec. and
Sec. corners at every 40th and
80th chs. I find the Township
line to be 5 miles and 7790
chains in length, and the
falling to be 1.88 chs. N. of
the Cor. to Tps. 15th and 16th N.
Ranges 80th and 81st W.

The correction for this
line will therefore be $3\frac{1}{3}$

16. N Range 81 W. of 6th P. 16.
 1/2 m. S. and 2.10 chs. N. per
 mile.

From the cor. To Sp. 15th
 16. N. Rgs 80 and 81, W.
 I run

INDEXED

N. $89^{\circ}47'W$ on a true
 line between Secs. 1 and 36

N. $16^{\circ}25'E$.

From the cor. descending
 a westerly slope.

4.00 Base of slope.

4.80 N. fork of Church Creek, 46
 lks. wide, 8 in. deep, runs
 $S. 51^{\circ}W$.

7.00 Begin ascending S.E. slope.

8.00 A granite stone $17 \times 10 \times 8$ sec
 12 in. deep, marked "4" on N.
 side, and in a mound of
 stone for "4" Sec. cor.

52
115.

120.

Between Tps. 15^{and}
Chans From which a

Spice 7 in diam. brs. S. 53 lks. dist

" 20 " " N. 40° E. 11 " "

51.00

Begin descending S.W. slope.

80.00

A quartz stone 26 x 16 x 10 set
18 in. deep, marked 1 notch on
the E. edge and 5 notches on
the W. edge, in a mound
of stones for Cor. to Secs. 1,
2, 35 and 36.

From which a

Fir 4 in diam. brs. N. 55° W. 8 lks. dist

" 6 " " S 51° E. 8 " "

" 6 " " N. 16° E. 10 " "

Land mountainous, unfit
for cultivation.

veg.: grass and 80.00 chs. of
heavy pine, spruce and fir
timber.

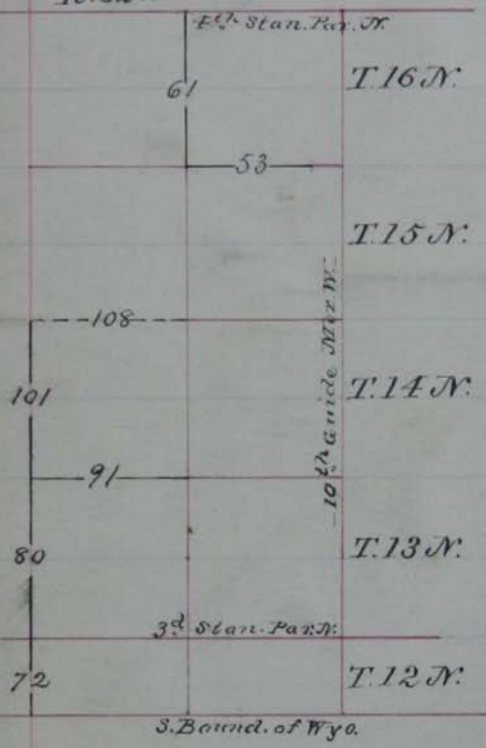
N. R. 8177. of 6th. Pr. Meer.

(See book No. 2)

Transcribed

Extensiors by W. O. Downey, contract 103 of May 12, 1879, Aug. 12, to Aug. 18, 1879.

R. 82 W R. 81 W



S. Bound. of Wyo.

Between Towns 13

16. N. Range 81 W. of 6th P. M.
 Chams. N. $89^{\circ} 47' W.$ ^{on a true line} between Sec. 2 & 35
 Na. $16^{\circ} 20' E.$

From the corner descending
 a S. W. slope.

- 5.00 Begin running along S. slope.
 15.00 Leave S. slope, and thence over
 rolling country.
 40.00 Quartzite stone $18 \times 10 \times 3$ set
 14 in. deep, marked "1" on N.
 side, and in a mound of
 stone for "1" Sec. cor.
 From which a
 6 in. diam. br. N. $28^{\circ} W.$ 27 lbs. dist.
 52.20 A creek 10 lbs. wide 3 in. deep
 runs S. W.
 65.90 Same creek runs N. $36^{\circ} W.$
 80.00 A quartzite stone $26 \times 16 \times 12$
 set 14 in. deep, marked 2
 notches on E. side and 1 notch
 on W. side and in a mound

54
118.

126.

Between Tps 15th and
Change of stone for Cor. to Secs. 2,

3, 34th and 35

From which a

Quartz vein runs S. 15° E. 24 lks. to

" 14. " " N. 35° W. 34 " "

" 7. " " S. 9° W. 38 " "

" 12. " " N. 46° E. 37 " "

Sand rolling and mountains
unfit for cultivation.

Veg.: Grass, and 80 chs of
heavy pine timber.

on a true line

N. 89° 47' W. bet. Secs. 3rd and 31st

N. 16° 25' E.

Running over rolling country

14.85 Temporary road, bet. Nth and Sth

40.00 A granite stone 12 x 8 x 8 set
9 in. deep, marked 14 on
N. side, and in a mound of
stone for 14 Sec. corner.

16. N. Range 8 1/2 W. of 6th. P.M.

Chambers from, which a

line 12 mi. diam. bears S. 1° W. 9 lbs. dist.

" 10 " " " N. — 18 " "

58.00 Begin ascending very steep

N. E. slope of mountain.

80.00 A granite stone 30 x 24 x 10

set 18 in. deep, marked 3 notches

on E. edge, and 3 notches, on W.

edge, and in a large mound of

stone for cor. to Secs. 3, 4,

33, and 34.

From, which a

line 14 mi. diam. bears N. 54° E. 30 lbs. dist.

" 10 " " " S. 81° E. 13 " "

" 8 " " " N. 5° W. 33 " "

" 10 " " " S. 38° W. 65 " "

Sand rolling and mountainous,
unfit for cultivation.

Veg. Grass and 80 lbs. of heavy
Pine timber.

56
120

128.

Between Tps. 15^{and}
Cham's Note: all along the E. 60
chains of this line, much
timber has been cut, for
manufacturing R.R. ties.

^{on a true line}
N. 89° 17' W bet. Secs. 1^{and} 33.
N. 16° 25' E.

From the cor. ascending very
steep N.E. slope.

28.50 Top of mountain bears N.W.^{and}
S.E.

29.00 Begin descending S.W. slope.

40.00 A granite stone 28x16x4
set 16 in. deep, marked 1/4 on
N. side, ^{and} in a mound of stone
for 1/4 Sec. cor.

From which a
line 12 in. diam. bears S 6° W. 9 lbs. dist

51.00 Base of mountain ^{and} begin
running along a S. slope.

16. N Range 81 W. of 6th P. etc.
 Chains
 67.50 Begin descending.

76.00 Base of mountain, and begin ascending E. slope.

80.00 A granite stone 18x10x6 set 14 in. deep, marked 4 notches on E. edge and 2 notches on W. edge and in a mound of stone for cor. to Secs. 4, 5, 32 and 33 from which a

Quadrant, bearing N. 16° E. 18 lks. dist.

" 6 " " S. 44° E. 15 " "

" 14 " " N. 31° W. 27 " "

" 10 " " S. 33° W. 32 " "

Land rolling and mountainous.

Unfit for cultivation.

Veget.: Grass and 80 chs. of heavy pine timber.

on a true line

N. 89° 47' W. between Secs. 5 and 32.

N. 16° 22' E.

58
122

Between Sps. 15th and

- Chains 1.00 Top br. N. and S.
- 30.00 Begin descending N.W. slope.
- 37.00 Changes to a N. slope.
- 40.00 A granite stone 24x8x4 sec
16 in. deep, marked 1/4 of N. side
and in a mound of stone for
1/4 Sec. cor.
From which a
line 4 in. diam. br. N. 3° E. 11 lbs. dist
" " " " " South 17 " "
- 50.00 Descending a S.W. slope.
- 64.00 Base of slope.
- 64.10 A creek 5 lbs. wide, 3 in. deep
runs S.W.
- 64.50 Begin ascending mountain
- 69.00 Top of same and begin descending
- 79.00 Base of slope.
- 80.00 A granite stone 18x15x11 sec
12 in. deep, marked 5 notches
on E and W edges, in a mound of

16. N. Range 81 W. of 6th p.m.

Chans, stone for cor. to Secs. 5, 6, 31 and 32.

Stump, which are
Open 5 in. diam. brs. S 70° E. 2 lks. dist.

" 8 " " " S 60° W. 17 " "

Land mountainous, unfit for
cultivation.

Veg.: Grass and 80. chs. of heavy
pine timber.

^{on a true line}
N. 89° 47' W. bet. Secs. 6 and 31.
Na. 16° 25' E.

4.82 A creek 8 lks. wide 3 in. deep
runs N. W. and brs. S. E.

5.00 Begin ascending a N. E. slope.

15.00 Begin descending a N. W.
slope.

23.00 Base of hill.

27.00 A gulch runs S. W.

27.20 Begin ascending a S. E. slope.

624

132.

Between Tps. 15^{and}

Chains

38.00 Begin running along rolling
S. slope.40.00 A granite stone 16x14x6 set
10 in. deep, marked "4" on N.
side and in a mound of stone
for "4" Sec. Cor.

47.00 Begin descending S.W. slope.

58.00 Base of mountain and begin
ascending.70.00 Top and begin descending N.W.
slope.77.90 The Cor. to Tps. 15^{and} 16. N. rgs
81^{and} 82 W.Land rolling and mountainous
unfit for cultivation.Veg.: Grass and 77.90 chs. of bear
grape and aspen timber.

Surveyed Aug 12, 1879.

16. N. Range 81 W. of 6th P.M.
 Chas. General Description,

Sp. 15. N. R. 81 W.

The country embraced within this Township is all rolling and mountainous unfit for cultivation or grazing purposes.

A very large proportion of this Township is covered with heavy pine, spruce and fir timber, - probably $\frac{3}{4}$ of it. Some fir cutting has been done, but I could learn nothing of the names of the parties who cut the same. The country is well watered with many streams of clear and pure water.

+ From the corner to Sp. 15^{2nd}

~~Between~~ Apr. 16. N.Chambers, N. Rgs 81^{and} 82, W.

Dunn

North ⁱⁿ ~~between~~ Apr. 16. N. bet.
Rgs 81^{and} 82 W.North bet. Secs. 31^{and} 36.

Va. 16° 10' E.

From the Cor. descending a
slight N. Westerly slope.

- 5.00 Leave Timber
- 13.00 Enter Timber ^{and} begin running
along a W. slope.
- 16.00 Begin descending a N.W. slope.
- 25.00 Base of slope.
- 26.00 Begin ascending S.W. slope.
- 29.00 Leave Timber, bet. E^{and} W.
- 39.50 Enter Timber.
- 40.00 A granite stone 18x10x5 set
12 in. deep, marked "4 on W.
side, and in a mound of stones

Between

135.

127 63

Ranges 51 and 52 W. ^{of 6. P. M.}

Chain with pits for 1/4 Sec. Cor.
55.00 top of mountain by N.W. and
S.E. thence over rolling top.

75.00 Begin descending.

70.00 A granite stone 15 x 10 x 10 set
10 in. deep, marked 1 notch
on S. edge and 5 notches on N.
edge and in a mound of
stone for Cor. to Secs. 25
30, 31 and 36.

From which a

line 10 in. diam. by N. 65° E. 9 lks. dist.

" 8 " " N. 45° W. 20 " "

" 9 " " S 32° E. 9 " "

Sand rolling and mountainous,
unfit for cultivation.

Veg.: Grass and 6.50 chs. of
heavy pine timber

North bet. Secs. 25 and 30.

64
128

~~Between Tps. 16. N.~~

- Chams $\text{Az. } 16^{\circ} - 12' \text{ E.}$
- Descending N. slope.
- 20.34 Pine tree diam.
- 27.00 Base of mountain and a gulch runs W., thence running over rolling country.
- 40.00 A granite stone $21 \times 12 \times 3$ set 18 in. deep, marked "4" on W. side, and in a mound of stone for "4 Sec. Cor.
- No trees of required size convenient
- 65.00 Descending gentle N.W. slope.
- 71.00 Base of slope.
- 75.00 Begin descending N. slope.
- 80.00 A granite stone $30 \times 18 \times 4$ set 20 in. deep, marked 2 notches on the S. edge and 4 notches on the N. Edge, and in a mound of stone, with pits for Cor. to Secs. 19, 24, 25 and 30.

Between

137.

129 65

Ranges 81 and 82 W. of 6 P.M.

Chains of trees of required size common.

Land mountainous unfit for cultivation.

Veg.: Grass and 80. chs. of heavy pine and aspen timber.

North between Secs. 19 and 24.
Pa. $16^{\circ} 20' E$.

From the corner descending gentle North slope.

- 10.00 Base of slope.
- 10.50 Begin ascending S.W. slope.
- 15.00 Leave timber.
- 31.00 Top of mountain brs E and W, and enter Timber.
- 32.00 Begin descending N.W. slope.
- 37.50 Base of slope.
- 37.90 Creek 7 lks. wide 3 in. deep. runs S $31^{\circ} W$.

136
133.
Between Apr 16 A
chains
38.00 Begin ascending rolling S.W.
8 slope.
40.00 Granite stone 10x10x7 set 7
in. deep, marked $\frac{1}{4}$ on W. side
and in a large mound of stone
for $\frac{1}{4}$ Sec. Cor.
43.00 Leave timber.
53.00 Enter timber, brs. E and W.
72.00 Leave timber.
79.00 Top of mountain, brs. N.W. and
S.E. thence over rolling top.
80.00 A granite stone 18x15x10 set
12 in. deep, marked 3 notches
on S. edge and 3 notches on
N. edge, ~~and~~ in a large mound
of stone, ~~and~~ with pits for Cor
to Secs. 13, 18, 19 and 21.
Land mountainous unfit for
cultivation.
Veg.: Grass and sage brush and

Between
739. 131 67
RANGES 81^{and} 82 W. of 6th P.M.
Chains 1/8 chains of heavy pine
timber.

North between Secs. 13^{and} 18
W. 16° 20' E.

From the Cor. running over
rolling mountain top.

1.00 Enter timber.

15.00 Begin descending a rolling
N.E. slope.

40.00 A granite stone 15x12x6 set
10 in. deep, marked "4" on
W. side ^{and} in a mound of stone
for 1/4 Sec. Cor.

From which a
line 12 in. diam. by W. 20 lbs. dist.

60.00 Base of mountain.

61.00 Leave timber.

61.05 Temporary road by E. and W.
Cabin 3 chs. W. of this point.

- 68
132 ⁷⁴⁰ Between Tps. 16 & 17
Chains
- 71.80 Left bank of South Brush
Creek, 10 in. deep, runs N. 28° W.
- 73.12 Right bank of same.
- 76.30 A creek 16 lks. wide, 6 in. deep,
runs West.
- 76.90 Left bank of North Brush
Creek, 9 in. deep, runs S. 10° W.
- 77.50 Right bank of same.
- 80.00 A granite boulder 15 x 8 x 8 set
12 in. deep, ^{and} in a large mound
of stone, marked 4 notches
on the S. edge, ^{and} 2 notches on
the N. edge, for Cor. to Secs. 7,
12, 13 ^{and} 18.
- Land S. 60 chains very moun-
tainous ^{and} rough; N. 20 chains
undulating. Unfit for culti-
vation.
- Veg.: Grass, willows, ^{and} 60 ch.
of heavy ^{pine} timber, ~~(^{pine})~~

Between

141.

133 69.

Ranges 81 and 82 W. of 6th p.m.

Chains

North between Secs. 7 and 12.
N. $16^{\circ} 12' E.$

- 34.90 Running over level country
Road bet. E and W.
- 40.00 A quartz boulder 15 x 10 x 8 set
9 in. deep, marked 4 on W.
side, in a mound of stone
and earth with pits for 4
Sec. Cor.
- 41.00 Begin running over rolling
country.
- 80.00 A quartz boulder 12 x 10 x 10
set 8 in. deep, marked 5
notches on S. edge, and 1
notch on N. edge, in a
large mound of stone and
with pits for Cor. to Secs.
16, 7, and 12
Sand rolling and undulating,

70 142.
134 ~~Between~~ Tps. 16. N.
Cham Soil third rate.
Veg.: Grass and sage brush.

North bet. Secs. 1 and 6.
No. 16° 20' E.

- 15.00 Enter heavy pine timber,
br. E and W.
- 32.00 Leave timber.
- 32.70 Temporary road, br. N.E. and
S.W.
- 46.00 A granite stone 18x12x10 set
12 in. deep, marked $\frac{1}{4}$ on N.
side, in a mound of stone
used with pits for $\frac{1}{4}$ Sec. Cor.
- 49.00 Begin running over rolling
N. slope.
- 73.00 Begin ascending S.E. slope.
- 84.00 Top of Bluff or hill, br. N. 36
E and S. 36 W.
- 105.82 Intersect 1/4th Standard

between

143.

135 74

Ranges 81 and 82 W. ^{of C. P. M.}

Chain Parallel ^{N.} 16.92 chs. E. of the
 Standard Corner to Tps. 17 N.
 Rgs. 81 and 82 W. at which point
 I set a granite stone 26 x 14 x
 10 set 17 in. deep, marked
 C notches on E. and W. edges,
 and C. C. on N. side, in a
 mound of stone and with
 pits for closing corner to
 Township 16 N. Rgs 81 and 82
 West.

Land rolling and hilly.

Soil third rate.

Veg: Grass and sage brush,
 and 17 chs. of heavy pine
 timber.

steps +
 Surveyed Aug. 13-1879.

General Description:

~~Between Tps 12 N.~~
Chains of Tps. 16 N. Rg. 81 W.

This Township consists of mountainous country; unfit for cultivation. More than 4/5 of this Township is heavily timbered with a very fine quality of pine and spruce timber. Great quantities of Rail-road cross ties, and many cords of wood have been manufactured in this Township.

From The Cor. to Township
12nd and 13 N. Rg's 82nd and 83 W. on
The 3rd Standard Parallel, N.
(The corner standing as
described in field notes
of Third Standard Parallel)

Between

7+5.

137 73

Ranges 82 and 83 W. ⁱⁿ 16. P.M.

Cham's running S. ^{between} ~~between~~ ⁱⁿ ~~in~~ 12,
N. ^{between} ~~between~~ ⁱⁿ ~~in~~ 82 and 83 W.

South between Secs. 1 and 6.

Na. $16^{\circ} 22' E$.

From the cor. ascending
a N.E. slope.

4.00 Begin running along
rolling E. slope.

7.00 Begin descending S.E. slope

12.00 Running along rolling E.
slope.

14.77 In a 12 mi. diam.

29.00 Descending S.E. slope.

36.00 Base of slope.

36.14 Creek 10 miles wide, 3 mi.
deep runs E.

36.50 Begin ascending steep
N.E. slope.

40.00 A granite stone 30x20x6

74
38

146.

Between Tps. 12. N. 13. S.

Chamset 20 in deep, marked
"4 on N. side, and in a mound
of Stone for "1 Sec. Cor.
From which a
"5 mi. diam. br. E. — 27 lks. dist.
" 3 " " " N. 86° W. 20 " "

46.05 A pine 10 in. diam.

47.00 Begin descending S.E. slope.

60.00 Along rolling E. slope.

75.00 Creek 6 lks. wide 3 in. deep
runs S. 78° E.

78.00 Begin ascending N.E. slope.

70.00 A granite stone 16 x 14 x 3 set
11 in. deep, marked 1 notch
on N. and 5 notches on the S.
edge, and in a mound of
Stone for Cor. to Secs. 1, 6,
7 and 12.
From which a
" 11 mi. diam. br. S. 40° E. 22 lks. dist.

between Ranges 82 and 83 W. of 6th P.M.

Chain 15 mid. diam. br. N. 51° E. 31 lks. dist.

" 18 " " " N. 67° 30' W 13 " "

" 6 " " " S. 61° - W. 24. "

Sand mountains, unfit
for cultivation.

Veg: Grass and rocks of very
fine heavy pine timber.

South between Secs. 7 and 12.
Va. 15° - 48° E.

From the corner ascending

7.00 Begin running along E. slope.

32.00 Begin ascending N.E. slope.

38.00 Top, br. nearly E and W

40.00 A granite stone 13 x 12 x 6

set 10 in. deep, marked "4

on N. side, in a mound of

stone and with pits for "4

Sec. Cor.

From which a

line 15 mid. diam. br. E. 17 lks. dist.

~~Between~~ Tps. 12 N.

- Chains No 12 in diam. brs. N. 14 kts. dist.
- 41.00 Begin descending steep S. slope.
- 47.75 In's 30 in. diam.
- 63.61 Base of slope ^{and} creek 8 kts. wide, 3 in. deep, runs E.
- 63.70 Begin ascending N.E. slope
- 77.00 Top of mountain brs. S.E. and N.W.
- 78.00 Begin descending S.W. slope.
- 70.00 A granite stone 24x12x8 set 16 in. deep, marked 2 notches on the N. edge, and 4 notches on the S. edge, and in a mound of stone for Cor. to Secs. 7, 12, 13 and 18
 From which a
 pin 11 in. diam. brs. N. 31° E. 22 kts. dist.
 " 16 " " S 50° E 21 " "
 " 6 " " S 65° W. 31 " "

Ranges 82 and 83 W. of G.P.M.

Chain. Pine 20 in. diam. brs. N. 50° W. 26 lks. dist.
 Land mountainous, unfit
 for cultivation.
 Veg.: Grass and 80 chs. of heavy
 pine timber.

South between Secs. 13 and 18.
 Va. 16° 10' E.

23.00 Base of slope.

23.30 Creek 10 lks. wide, 3 in. deep
 runs N. 83° E.

23.35 Begin ascending steep N.
 slope of mountain.

40.00 A granite stone 20 x 10 x 8 in.
 14 in. deep, marked "4" on N.
 side, and in a mound of
 stone for "4" Sec. Cor.
 From which a
 Pine 12 in. diam. brs. W. 13 lks. dist.
 " 12 " " " N. 87° E. 32 " "

78
142

~~Between~~ ~~Secs.~~ 12. N. chains

42.00 Top of mountain hrs. E and W.

44.00 Along a rolling E. slope.

45.25 A pine 12 in. diam.

56.52 A creek 10 hrs. wide, 3 in. deep, runs N. 58° E.

57.00 Begin ascending N. W. slope.

80.00 A granite stone 20 x 12 x 6 set 14 in. deep, marked 3 notches on S. edge, 3 notches on N. edge, and in a mound of stone for cor. to Secs. 13, 18, 19 and 24. From which a

Pine 12 in. diam. hrs. N. 55° W. 21 hrs. dist

" 12 " " " S. 30° W. 3 " "

" 7 " " " S 75° E. 23 " "

Land mountainous and unfit for cultivation.

Veg: Grass and 80 chs. of heavy pine timber.

Between ^{151.} Ranges 82 and 83 ¹⁴³ ⁷⁹
Chains South of Secs. 19 and 24. *N. of 6 P.M.*
Va. $16^{\circ} 20' E$.
From the cor. ascending
steep N.W. slope of a mountain
again.
0.70 Intersect the S. boundary
line of Wyoming Territory
at a point 5.37 chs. E. of
the 137th. mile post on
said line at which point
I set a granite stone, $28 \times$
 28×10 set 10 in. deep marked
C.C. on the N. side, and in
a mound of stone for cor.
to fractional Secs. 19 and
24.
From which a
line 10 in. diam. br. S. $30^{\circ} E$. 18 lks. dist
" 8 " " " S $30^{\circ} W$. 23 " "
" 9 " " " N. $40^{\circ} E$. 17 " "

The S. boundary of Wyo. deflects N. 85 lks. per mile, in R. 82 W.

Bot. Sp. 12. N. Rgs. 82nd and 83rd W.

144

Chainsland, mountainous, unfit for cultivation.

Veg: Grass, and 0.70 chs of heavy pine Timber

Surveyed Aug. 14, 1879.

General Description:

The land on either side of this line is very rough and mountainous, unfit for cultivation. The entire country on E. side of this township line is covered with a fine quality of heavy pine timber.

From the corner to Sp. 12th and 13. N. Rgs 82nd and 83rd W.

153. ^{between} 145 ^{of 6th. P. m.} 71
~~Post~~ Apr. 13. N. Pgs. 82 and 83 W.
Chamson the 3rd Standard Parallel,
N. I run
North ~~between~~ ⁱⁿ Apr. 13. N.
between Pgs. 82 and 83 W.

North between Secs. 31 and 36
Na. $16^{\circ} 20' E$.

From the cor. descending a
N. E. slope.

16.19 A pine 8 in. diam.

37.20 Base of mountain

37.30 Creek 8 lks wide 2 in. deep
runs N. $40^{\circ} E$.

39.00 Begin running over E. slope.

40.00 A granite stone $20 \times 18 \times 8$ set
15 in. deep, marked $\frac{1}{4}$ on W.
side, in a mound of stone
and with pits for $\frac{1}{4}$ Sec. cor.
From which a
Spruce 18 in. diam. br. E. 22 lks. dist.

82.
146

151.

~~Between~~ Apr 13. N

- Chancé in 5 in diam. brs. West 15 lks. dist.
- 44.89 A pine 15 in diam.
- 80.00 A granite stone 30 x 24 x 8 set 18 in. deep, marked 1 notch on the S. ^{2d} 5 notches on the N. sides in a mound of stone ^{and} with pits for Cor. to Secs. 25, 30, 31 and 36.

- Then which a
- Pine 12 in diam. brs. S. 60° W. 28 lks. dist.
 - " 10 " " " S 15° E. 10 " "
 - " 6 " " " N. 48° E. 21 " "
 - " 8 " " " N. 75° W. 42 " "

Sand mountainous, unfit for cultivation.
 Veg.: Grass ^{and} 80 chs. of heavy pine timber.

North between Secs. 25 ^{and} 30
 N. 16° 48' E.
 From the corner running

Between Ranges 82 and 83 W. Pa.
 Shams over rolling East slope.

- 4.24 A pine 18 in. diam.
 10.00 Begin descending a N. slope
 29.78 Base of mountain.
 30.00 A creek, 10 lks. wide 5 in.
 deep, runs E.
 30.25 Begin ascending S.E. slope
 of mountain
 39.00 Along rolling E. slope.
 40.00 A quartzite stone 12x10x6
 set 8 in. deep, marked $\frac{1}{4}$
 on W. side, in a mound of
 stones ^{and} with pits for $\frac{1}{4}$
 Sec. Cor.
 From which a
 pine 12 in. diam. brs E. 6 lks. dist.
 41.00 Begin descending a N.E. slope.
 52.00 Base of slope ^{and} a creek 8 lks
 wide, 5 in. deep, runs N.E.
 53.00 Begin ascending mountain.

74
148

~~Between~~ Sp. 13. N.

66.00⁴

Pine 14 in. diam.

73.00

Top of mountain brs. E^{and} W,
Thence over rolling Top.

80.00

A granite stone 24x12x8
set 16 in. deep, marked 2
notches on the S. edge^{and}
4 notches on the N. edge,
in a mound of stone,^{and}
with pits for Cor. to Secs.
19x24x25^{and} 30.

From which a

Pine 18 in. diam. br. S. 42° E. 36 lks. dist.

• 12 • " " N. 35° W. 23 " "

" 9 " " N. 34° E 12 " "

Sand mountainous unfit
for cultivation.

Veget: Grass^{and} 80 chs. of heavy
Pine timber

North between Secs. 19^{and} 24.

- 8.69 A pine 12 in. diam.
- 10.00 Begin descending a N. slope.
- 25.30 Base of mountain.
- 25.40 A creek 7 lks. wide 2 in. deep runs N. E.
- 36.00 Running along an Eastern slope.
- 40.00 A granite stone 18x15x8 set 13 in. deep, marked "4" on W. side, in a mound of stone and with pits for "4 Sec. Cor. From which a Pine 15 in. diam. brs. N. 88° E 50 lks. dist
" 9 " " " W. 27 " "
- 45.00 Descending a N. slope.
- 47.40 A pine 7 in. diam.
- 49.65 Base of slope.
- 49.70 A creek 8 lks. wide, 5 in. deep, runs West.

86
150

153.

~~Between~~ Trce 13. N.

- Chain
- 52.00 Begin ascending S. slope.
- 60.00 Top, bet. E^{and} W.
- 61.00 Begin descending a N. slope.
- 65.00 Begin ascending
- 80.00 A granite stone 16x8x8 set
11 in. deep, marked 3 notches
on S. edge, ^{and} 3 notches on N.
edge, in a mound of stone ^{and}
with pits for Cor. to Secs. 13,
18, 19 ^{and} 24.

No trees of required size con-
venient.

Sand mountainous, unfit
for cultivation.
Veg: Grass ^{and} 80 chs. of heavy
Pine timber.

North between Secs. 13 ^{and} 18.
Na. 16° 25' E.

From the Cor. ascending,

Between ^{159.} Ranges 82 and 83 ¹⁵¹ W. ⁸⁷ of G. P. M.
Chains Mountain (S.W. slope)

- 1.00 Leave timber.
- 8.00 Begin running along W. slope
and as we run N. The Top of
this mountain is 5 chs. E. of
us.
- 11.00 Begin descending N.W. slope.
and enter timber, brs. E and W.
- 18.65 Base of mountain.
- 18.70 A ravine runs W. and leave
timber, and begin ascending
S.W. slope of mountain.
- 35.50 Conical Top of mountain.
- 36.50 Descending N.W. slope.
- 38.00 Enter timber.
- 40.00 A piece of quartz 15 x 9 x 6 sec 10
in. deep, marked $\frac{1}{4}$ on W. side,
in a mound of stone and with
pits for $\frac{1}{4}$ Sec. Cor.
From which a

~~Between~~ Sp. 13. N.

Chains 1 mi 12 in. diam. br. W - 10 lbs. dist.

" 12. " " N. 89° E. 11 " "

50.95 A spruce 20 in. diam.

80.00 A granite stone 22 x 14 x 5 set
15 in. deep, marked it notches
on S. edge, and 2 notches on N.
edge, in a mound of stone
and with pits for cor. To Secs.
7, 12, 13 and 18.

From which a

1 mi 15 in. diam. br. S. 75° W. 25 lbs. dist.

" 18 " " " N. 35° E. 38 " "

" 11 " " " S. 35° E. 26 " "

Sand, mountainous and rough,
unfit for cultivation.

Veg.: Grass and 50-70 chs. of heavy
pine timber.

North between Secs. 7 and 12

No. 16° 28' E.

Return

161

153

89

Ranges 82 and 83 W. 70 p.m.

- Chains from the cor. descending.
- 0.35 Ravine runs N.E.
 - 1.00 Begin ascending) S.E. slope.
 - 10.00 Along rolling E. slope.
 - 24.00 Begin descending) N. slope.
 - 39.00 Base of slope.
 - 40.00 A granite stone 12 x 12 x 5, set 8 in. deep, marked "4" on W. side, and in a mound of stone for "4" Sec. cor. From which a pipe 12 in. diam. brs. W. 55 lbs. dist.
 - 40.90 Begin ascending) a S.E. slope.
 - 46.00 Along Eastern slope.
 - 48.00 Begin descending) gentle N. slope.
 - 63.00 Leave timber and descending) N.W. slope.
 - 76.00 Along nearly W. slope.
 - 80.00 A granite stone 18 x 18 x 12, set

76
154.

162

Between Twp 13. N.

Chains 12 mi. deep, marked 5 notches
on S. edge, and 1 notch on the
N. edge, in a mound of stone
for Cor. to Secs. 1, 6, 7 and 12.
Land mountainous, unfit
for cultivation.

Vegetation: Grass, and 63 chs. of
heavy pine and aspen timber.

North between Secs. 1 and 6.
N. 16° 28' E.

From the Cor., running
along a Western slope,
gradually descending

40.00 A granite stone 18 x 18 x 12
set 12 mi. deep, marked ¹¹⁴/₄
on N. side, in a mound of
stone, and with pits for ¹¹⁴/₄
Sec. Cor.

Between

165.

155

6th. P. M. 91

Ranges 82 and 83 W. 7th N.

44.00 Descending N. W. slope.
61.00 Descending N. slope
76.00 Beaver Creek, 40 lbs. wide
8 in. deep, runs N. E.

78.00 Begin ascending S. E. slope.

80.00 A granite stone 24 x 12 x 8 set
16 in. deep, marked 6 notches
on the S. E. W. and N. sides;
said cor. sets in a large
mound of stone for cor. to
Townships 13 and 14 N. Rgs. 82
and 83 W.

Land rolling and mountainous,
unfit for cultivation.
Veg.: Grass and sage brush.

Surveyed Aug 15, 1879.

From the cor. to Townships

92
156

Between Tps. 13^{and}
Chains 13^{and} 14. N. Rgs. 82^{and} 83 W.
I run

East on a random
line between Tps. 13^{and} 14
N. Rg. 82 W. ^{and} I set tem-
porary 1/4 Sec. ^{and} Sec. cor-
ners at every 40^{and} 80. chs.
I find this Sp. line to be
5 miles ^{and} 79.20 chs. in
length, ^{and} the falling to
be 84 lks. N. of the Cor. to
Tps. 13^{and} 14. N. Rgs. 81^{and} 82
W. The correction for this
line will therefore be 80.
links W. ^{and} #¹⁴ lks. S. per
mile.

From the Cor. to Tps 13^{and} 14
N. Rgs. 81^{and} 82 W.

14th Range & 2 W. of 6th P. M.

Chain & run

N. $89^{\circ}54'$ W. ^{on a true line} between Secs.
1 and 36.

N. $16^{\circ}25'$ E.

From the cor. ascending S.E.
slope of a bluff.

40.00 A granite stone 15 x 12 x 8 set 10
in. deep, marked $\frac{1}{4}$ on N. side
and in a mound of stone
for $\frac{1}{4}$ Sec. cor.

53.00 Top of ridge or bluff bet. N.E.
and S.W.

Running thence over high
rolling country

80.00 A granite stone 15 x 10 x 4 set
10 in. deep, marked one
notch on E. edge and 5 notches
on W. edge, in a mound of
stone and with pits for cor.
to Secs. 1, 2, 35 and 36.

94
158

165.

Between Tps. 13^{and}
Chambers Land rolling.

Soil Sand rate.

Veg: Grass ^{and} sage brush.

N. 89° 5' ^{on a true line} W. Secs. 2^{and} 35
Va. 16° 15' E.

From the cor. running
over rolling country.

40.00 Granite stone 10x10x6 set
7 in. deep, marked 1/4 on
N. side, in a mound of
stone, ^{and} with pits for 1/4
Sec. cor.

80.00 Granite stone 10x12x15 set
11 in. deep, marked 2 notches
on E. edge, 4 notches on W.
edge, ^{and} in a mound of
stone with pits for cor.
To Secs. 2, 3, 34 ^{and} 35,
Sand rolling.

14. N. Range 52 W. of 6th. P.M.
 Chanso Soil Mud rate.

veg.: Grass and sage brush.

N. $89^{\circ}54'$ W. on a true line
 between Secs. 3rd and 34,
 Na. $16^{\circ}20'$ E.

7.00 Begin descending.

10.00 A granite stone $14 \times 10 \times 8$ set
 10 in. deep, marked "4" on
 N. side in a mound of
 stone and with pits for "4"
 Sec. cor.

60.00 Base of bluff.

61.00 Begin ascending.

75.00 Enter heavy aspen timber
 hrs. N. and S.

80.00 A granite stone $18 \times 9 \times 7$
 set 12 in. deep, marked
 3 notches on E. edge, and 3
 notches on W. edge, and in

Between Tps 13^{and}
 through a mound of stone for box.

To Secs. 3, 4, 33^{and} 34.

From which an

Aspen 1/2 mi. drain. brs. S. 33° E. 11 lks. dist

" 4 " " " S 70° W. 20 " "

" 4 " " " N. 65° W. 18 " "

Sand rolling^{and} hilly,
 Soil 3^d rate.

Veg: Grass, sage brush^{and}
 5 lks. of heavy aspen tim-
 ber

N. 59° 5' ^{ona true line} W. bet. Secs. 4^{and} 33.
 N. 16° 20' E.

6.00 Leave timber

8.00 Top of bluff, brs. N. ^{and} S.
 and begin descending.

17.70 Base of bluff.

17.75 Creek 4 lks wide, 2 in
 deep, runs N.

14. N. Range 82 W. of 6th P. 1920.

Chain running thence over rolling country.

46.00 A granite stone 12x12x9
set 9 in. deep, marked 44
on N. side, in a mound
of stone and with pits for
44 Sec. Cor.

63.25 Cherokee road bet. N. W.
and S. E.

80.00 A granite stone 10x10x8
set 6 in. deep, marked 4
notches on E. edge, and 2
notches on W. edge, in a
mound of stone and with
pits for Cor. To Secs. 4, 5,
33 and 33.

Land rolling.

Soil 3/4 rate.

Veget.: Grass and sage brush,
and 6 chs. of heavy aspen.

98
162

170.

Between Tps. 13

Chains timber.

N. $89^{\circ}5'$ ^{4'} W. ^{on a true line} between Secs. 5th & 32nd
N. $16^{\circ}20'$ E.

Running over ^{very} heavy rolling
ground.

4.50 A very deep ravine, runs
N.E.

30.00 Enter grove of heavy aspen
timber, bet. N. and S.

38.00 Leave timber.

40.00 A granite stone 15 x 10 x 7 set
10 in. deep, marked "4" on the N.
side, in a mound of stones
and with pits for "4" Sec. cor.

62.00 Enter heavy aspen timber, bet
N. and S.

62.36 A creek 7 lbs. wide, 6 in. deep,
runs N.

68.00 Leave timber.

- 80.00 A granite stone 15x12x7 set 10
 in. deep, marked 5 notches on
 E. edge, 1 notch on W. edge, in
 a mound of stone, with pits
 for cor. to Secs. 5, 6, 31 and 32.
 Sand rolling.
 Soil third rate.
 Veg.: Grass and sage brush, and
 6. chs. of heavy aspen timber.
-
- N. $89^{\circ} 5'$ ⁴ _N ^{on a true line} between Secs. 6 and 31.
 N. $16^{\circ} 20' E$.
- 3.25 A creek 4 lks. wide 3 in. deep
 runs N.
- 14.00 Enter heavy aspen timber.
- 20.00 Leave timber.
- 40.00 A granite stone 15x10x7 set
 10 in. deep, marked 14 on
 N. side in a mound of stone
 and with pits for 14 Sec. cor.

100
164
6th. P. M.
1872.
Bet. Tps. 13rd and 14th N. Rg. 82 W. of
Chapman
43.00 Descending a gentle N. W.
slope.

71.00 Base of slope.

73.90 Right bank of Beaver Creek
10 mi. deep, runs N. 28° E.

74.30 Left bank of same.

77.00 Begin ascending S. E. slope
of very steep mountain.

79.20 The Cor. to Tps. 13rd and 14th N.
Rgs. 82nd and 83 W.

Land rolling,
Soil Third rate.

Veget.: Grass, sage brush and
Cchs. of heavy aspen timber

Surveyed Aug 16-1879

General Description
of
Township 13. N. Rg. 82 W.

Pat. Sp. 11. N. Rgs. 82 and 83 W. 9/11

thans the character of the country embraced within this township is very diversified. The South Western half is very mountainous, and is covered with heavy pine timber. The ~~South~~^{North} Eastern half is rolling and hilly, with some scattering aspen timber. Soil third rate, and admirably adapted to stock grazing.

From the Cor. to Townships 13 and 14. N. Rgs. 82 and 83 W. running N. ~~between~~^{on} Sp. 11. N. Rgs. 82 and 83 W.

North between Secs. 31 and 36

102
166

174.

~~Between~~ Tps. 14. N.

Chains Va. 16° 20' E.

- From the corner ascending a steep S. E. slope
- 6.00 Along rolling E. slope.
 - 22.00 Descending ^{N. W. E.} S. E. slope.
 - 37.00 Strike rolling ground.
 - 40.00 A granite stone 12 x 10 x 8 set 8 in. deep, marked 1/4 on W. side, in a mound of stone, ^{and} with pits for 1/4 Sec. Cor.
 - 80.00 A granite stone 10 x 8 x 7 set 7 in. deep, marked 1 notch on S. edge, ^{and} 5 notches on N. edge in a mound of earth ^{and} stone with pits for Cor. to Secs 25, 30, 31 ^{and} 36
- Sand S 1/2 mountainous
N 1/2 rolling; soil, third rate

between
 Ranges 52nd and 53rd W. *of 6th P.M.*
 Chain Veg.: Grass ^{and} sage brush.

North between Secs. 25th and 30.

Na. $16^{\circ} 25' E$.

40.00 A granite stone $12 \times 12 \times 4$
 set 9 in. deep, marked 14
 on West side, in a mound
 of stone, ^{and} with pits for
 14 Sec. Cor.

64.02 Cherokee road brs E ^{and} W.

80.00 A quartz stone $18 \times 15 \times 8$ set 12
 in. deep (too hard to be marked
^{and} in a mound of stone with
 pits for Cor. to Secs. 19, 24,
 25th and 30.

Sand rolling.

Soil Third rate.

Veg. Grass ^{and} sage brush.

North between Secs. 19th and 24.

704
168

173.

~~Between~~ Sp. 14, N.

Chains Va. $16^{\circ}25'E$.
40.00 A granite stone $20 \times 12 \times 10$
set 14 in. deep, marked
 $\frac{1}{4}$ on W side, in a mound
of earth and with pits for
 $\frac{1}{4}$ Sec. Cor.

75.70 Dry Creek bed, - runs N.
 $50^{\circ}E$.

80.00 A granite stone $10 \times 10 \times 6$
set 7 in. deep, marked 3
notches on S. Edge and 3
notches on N. edge, set in
a mound of stone and with
pits for Cor. to Secs. 13, 18, 19
and 24.

Sand rolling,
Soil third rate,
Veg: Grass and sage brush

North between Secs 13 and 18

Between
777. 169 105
Ranges 82nd and 83rd W. of 6. P. M. C.
Chain No. 16° 30' E.

40.00 A quartz stone 18x8x6 set
7 in. deep, marked $\frac{1}{4}$ on
W. side, in a large mound
of earth and with pits for
Sec. Cov.

80.00 A quartz stone 12x8x6 set
7 in. deep, marked 4 notches
on S. edge, and 2 notches on
N. edge in a large mound
of stone and with pits for
Cov. to Secs 7, 12, 13 and 18.
Sand, undulating.
Soil third rate. Veg. Grass,
and sage brush.

North between Secs. 7 and 12.
No. 16° 20' E.

40.00 A granite stone 9x8x8 set
6 in. deep, marked $\frac{1}{4}$ on W.

106
170

178.

~~Between Tps. 14. N.~~

Chainside, in a mound of earth and with pits for ¹¹/₂ Sec. Cor.

64.00 Enter a wet gulch, runs E.

76.00 Leave Gulch.

80.00 A granite stone 15x10x8 set 9 in. deep, marked 5 notches on S. edge, and 1 notch on N. edge, in a mound of earth, and with pits for Cor. to Secs. 1, 6, 7, and 12.

Sand rolling.

Soil, Third rate.

Veg.: Grass and sage brush.

North between Secs. 1 and 6.

Na. 16° 25' E.

40.00 A Granite stone E 11x8x7

Between 179. 171 107
Ranges 82 and 83 W. of 6th p.m.

Chain set 7 in. deep, marked 1/4 on
W. side, and in a large mound
of earth with pits for 1/4
Sec. cor.

63.75 A gulch runs N. E.

71.20 A gulch runs E.

80.00 A granite stone 14x10x9
set 8 in. deep, marked 6
notches on the N. S. E. and
W. edges. Said corner sets in
a large mound of earth
and with pits for cor. to
Townships 14 and 15. N. Rgs.
82 and 83 W.

Sand rolling.

Soil third rate

Veg.: Grass and sage brush.

Surveyed Aug. 18, 1879.

108
172

180.

6th P.M.

Bel. Tps. 14th and 15th N. Rg. 82 W. of
chains from the cor. to Tps. 14th
15th N. Rgs. 82nd and 83 W. I run
East on a random
line between Tps. 14th and 15th
N. Rg. 82 W.

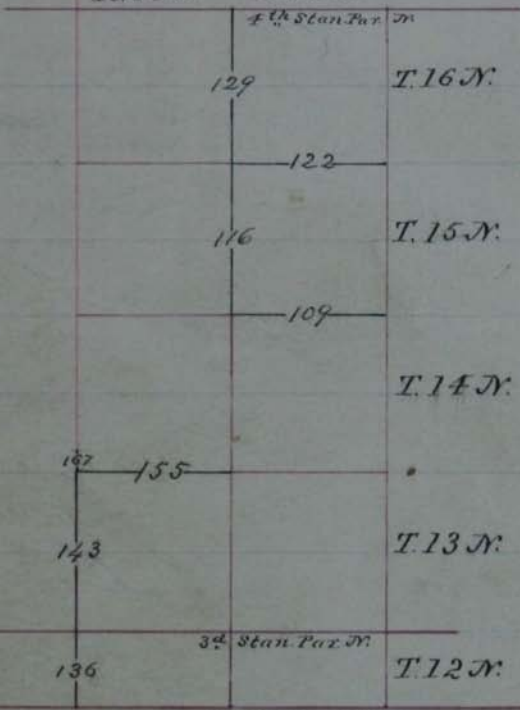
And I set temporary 1st
Sec. and Sec. corners, at
every 40th and 80 chains. I
find this Tps. line to be
5 miles and 78.80 chs. in
length and they falling to be
46 lks. N. of the cor. to Tps.
14th and 15th N. Rgs. 81st and 82 W.

The correction for this line
will therefore be 1.20 chs.
N. and $\frac{2}{3}$ lks South per
mile

Transcribed

Exteriors by W. O. Downey, contract 103,
of May 12, 1879, Aug. 18, to Aug. 27, 1879.

R. 83 W. R. 82 W.



- S. Bound. of Wyo. -

Bet. Tps. 14th and 15th, Rgs. 82 W. of

Chambers from the cor. to Tps. 14th and 15th, Rgs. 81st and 82nd W.

Sum

N. 89° 57' W. on a true line between Secs. 1st and 36

No. 16° 25' E.

From the cor. descending a rocky and broken S-W slope.

30.00 Base of same.

40.00 A quartz stone 15x12x12 set 9 in. deep, marked 4 on N. side, and in a mound of stone for 4 Sec. cor.

44.40 Right bank of North Platte river 18 in. deep runs N. 42° W.

57.20 Left bank of same

80.00 A granite stone 20x12x5 set 15 in. deep, marked 1 notch on E. edge, and 5 notches

Between Sps. 14 and
 chains on W. edge, in a mound of
 stone, with pits for cor.
 to Secs. 1, 2, 35, and 36
 Sand: E $\frac{1}{2}$ rocky and mountain-
 ous, unfit for cultivation;
 W $\frac{1}{2}$, rolling, and
 Soil third rate.
 Veg.: Grass and sage-bush.

on a true line
 N. $89^{\circ} 5'$ W. between Secs. 2 and 35
 Na. $16^{\circ} 20' E$.

- 30.00 Begin ascending a N. E.
 slope.
- 40.00 A quartzite stone $24 \times 14 \times 8$ in
 15 in deep, marked $\frac{1}{4}$ on N.
 side, and in a mound of stone
 for $\frac{1}{4}$ Sec. Cor.
- 80.00 A granite stone $20 \times 12 \times 5$ in
 14 in deep, marked 2 notches
 on E. edge, and 4 notches on W.

15. N. Range 52 W. of 6th. P. M.

Chain edge, in a mound of stone
and with pits for cor. to Secs.
2, 3, 34 and 35.

Sand rolling and mountainous,
unfit for cultivation.

Veg.: Grass and sage brush.

one true line

N 89° 57' W. between Secs. 3 & 34.

N. 16° 20' E.

From the cor. ascending steep
N. E. slope.

- 8.00 Along steep N. slope.
- 26.00 Ascending N. E. slope.
- 33.00 Begin descending W. slope.
- 40.00 A granite stone 16x14x8 set 11
in. deep, marked 1/4 on N. side
and in a large mound of stone
for 1/4 Sec. Cor.
- 50.00 Begin ascending N. E. slope.
- 75.00 Running along steep N. slope.

Between Tps. 14^{and}
Claims

80.00 A granite stone 18 x 12 x 6 set
 12 in. deep, marked 3 notches
 on E edge and 3 notches on W.
 edge in a mound of stone
 for Cor. to Secs. 3, 4, 33^{and} 34
 Land mountainous^{and} rocky
 unfit for cultivation.
 Veg.: Grass^{and} sage brush.

on a tree line

N. 89° 57' W. between Secs. 4 & 33
 N. 16° 20' E.

4.00 From the Cor. ascending slightly
 Top or back-bone of mountain,
 hrs. N. 30° W. and S. Begin
 running on S. slope, very
 rocky^{and} rough.

34.40 Begin descending S.W. slope

40.00 A granite stone 15 x 12 x 4 set
 10 in. deep, marked 14 on N.
 side, in a large mound of

15. N Range S 2 W, of 6th. P. M.

Chains stone for $\frac{1}{4}$ Sec. Cor.

42.00 Descending W. slope.

50.00 Descending N. W. slope.

78.00 Base of slope, ^{and} thence descending gradually over ~~heavy~~^{very} rolling country.

80.00 A granite stone 18x12x7 set 12 in. deep, marked 4 notches on the E. edge, ^{and} 2 notches on the W. edge, in a large mound of stone, ^{and} with pits for Cor. to Secs. 1, 5, 32 ^{and} 33. Land rocky ^{and} mountainous, unfit for cultivation. Veg.: Grass ^{and} sage bush.

on a true line

N. $89^{\circ} 57'$ W. bet. Secs. 5 ^{and} 32.

N. $16^{\circ} 28'$ E.

From the Cor. over rolling country.

Between Tps. 14^{and}

Chains
40.00

A granite stone 16 x 14 x 4 set 11 in. deep, marked "4" on N. side and in a large mound of stone for "4 Sec. Cor.

80.00

A granite stone 18 x 12 x 6 set 12 in. deep, marked 5 notches on the E. edge, 1 notch on the W. edge, in a mound of stone, and with pits for Cor. to Secs. 5, 6, 31^{and} 32.

Land rolling and hilly.
Unfit for cultivation.
Veg.: Grass and sage-brush.

on a true line

N. 89° 57' W. between Secs. 6^{and} 31
N. 16° 20' E.

9.40

Beaver Creek 18 lks. wide, 10 in. deep, runs N.

40.00

A quartz rock 18 x 12 x 3, marked "4" on N. side, set 9 in. deep,

15. N. Range 82 W. of 6th. P. M.

Chains in a large mound of earth,
and stone, and with pits for 14
Sec. Cor.

64.25 A dry ravine runs N.E.

78.80 The Cor. to Sp. 14 and 15. N. Rgs.
82 and 83 W.

Sand rolling.

Soil Third rate.

Veg. Grass and sage bush.

Surveyed Aug. 18-1879.

General Description:

of
Sp. 14. N. Rg. 82 W.

This Township consists almost
entirely of hilly and rolling
country. The larger propor-
tion is fit for cultivation,
The soil being about third
rate. Veg: Grass and sage-bush.

~~Between~~ Tps. 15 N.

Chains from the cor. to Tps. 14^{and}
15. N. Rgs. 82^{and} 83 W.

Drawn

North ~~between~~ⁱⁿ Tps. 15. N.

between Rgs. 82^{and} 83 W.

North between Secs. 31^{and} 36.
N. 16° 25' E

From the cor. running over
gently rolling country.

40.00 A quartz stone 12 x 8 x 6, set
6 in. deep, marked $\frac{1}{4}$ on N. side
in a large mound of earth,^{and}
with pits for $\frac{1}{4}$ Sec. cor.

80.00 A quartz stone 10 x 8 x 8 set 6 in.
deep, marked with one notch on
the S. edge,^{and} 5 notches on the
N. edge, in a mound of earth
^{and} with pits for cor. to Secs. 25
30, 31^{and} 36

Between

193.

182

117
of 6th P.M.

Ranges 2nd and 3rd

Chains Land gently rolling.

Soil 2nd rate.

Veg.: Grass and sage brush.

N. between Secs. 25th and 30.

Va. 16° 25' E.

40.00 A granite stone 10 x 8 x 7 set 7 in deep, marked 4 on W. side in a large mound of earth, and with pits for 4 Sec. Cor.

80.00 A granite boulder 14 x 10 x 7 set 9 in deep, marked 2 notches on S. edge, and 4 notches on N. edge, in a mound of earth and with pits for Cor. to Secs. 19, 24, 25 and 30.

Land gently rolling.

Soil 3rd rate.

Veg.: Grass and sage brush.

183

194.

~~Butterfly~~ Apr. 13. N.

Chains. North between Secs. 19^{and} 24.
No. 16° 20' E.

40.00 A granite stone 16 x 14 x 7 set 9
in. deep, marked 1/4 on the W.
side, in a mound of earth^{and}
with pits for 1/4 Sec. cor.

80.00 A quartz boulder 18 x 10 x 6 set
12 in. deep, marked 3 notches
on the S. edge, ^{and} 3 notches
on the N. edge, in a mound
of stone^{and} with pits for cor.
to Secs. 13, 18, 19^{and} 24.

Sand gently rolling.

Soil third rate.

Veg.: Grass^{and} sage brush.

North between Secs. 13^{and} 18.

No. 16° 28' E.

40.00 A granite boulder 12 x 10 x 6
set 8 in. deep, marked 1/4 on

Between

195.

184

#19

Ranges 82nd and 83rd W. of G. P. M.

Chains W. side, in a mound of earth
and with pits for "4 Sec. Cor.

44.00 A bend in the North Platte
river, is 50 hrs. E. of this point.

44.50 Begin running along a rolling
E. slope of bluff.

56.00 Strike level river bottom, bet
N. W. and S. E.

64.25 Left bank of North Platte
river, runs N. 60° W.

69.27 Right bank of same.

80.00 A granite boulder 12x10x8
set 9 mi. deep, marked 4
notches on S. edge and 2 notches
on North edge, in a mound
of earth and with pits for
Cor. to Secs. 7, 12, 13 and 18.

Sand rolling and level.

Soil third rate.

Veg. Grass and sage brush.

120
185

196.

~~Between~~ Apr 15. N.

Chains North bet. Secs. 7^{and} 12.

Na. 16° 20' E.

15.00 Leave level bottom^{and} begin running over rough rolling country.

40.00 A granite stone 24x18x7 set 16 in. deep, marked 1/4, on W. side, ^{and} in a large mound of stone for "1/4 Sec. Cor.

80.00 A granite stone 24x15x12 set 16 in. deep, marked 5 notches on S. edge, ^{and} 1 notch on N. edge, in a mound of earth ^{and} with pits for Cor. to Secs. 1, 6, 7 ^{and} 12.

Sand rolling,
Soil Third rate.

Veg.: Grass ^{and} sage brush.

North between Secs. 1 ^{and} 6.

Peterson

197.

186 424

Ranges 82 and 83 (W. of G. P. M.)
Chains No. 16° 20 E.

- 25.00 Begin ascending.
- 35.00 Top of hill, brs. E and W. and begin descending.
- 40.00 A granite stone 18x10x10 set 12 in. deep, marked "4 on W. side and in a mound of stone for "4 Sec. Cor.
- 46.50 Base of hill
- 47.00 Begin ascending.
- 54.80 Top, brs. E and W. and begin descending.
- 66.00 Base of slope and begin running over rough rolling Western slope.
- 80.00 A granite stone 18x12x7 set 12 in. deep, marked 6 notches on the N. S. E. and W. edges, said Cor. sits in a large mound of stone, and with pits for Cor. to Sp. 15 and 16 N. Rgs. 82 and 83 W.

122
187

193.1

Between Tps. 15^{and} 16

Chains land rough, rocky and hilly,
unfit for cultivation.

Veg.: Grass and sage brush.

Surveyed Aug. 19, 1879.

From the Cor. to Tps. 15^{and} 16

N. Rgs. 82^{and} 83 W.

Run

E. on a random line be-
tween Tps. 15^{and} 16 N. Rg. 82 W.

I set temporary $\frac{1}{4}$ Sec. and Sec.
corners, at every 40^{and} 80 chs.

I find the length of this town-
ship line to be 5 miles^{and} 79.10

chs. and the falling to be 2.20
chs. N. of the Cor. to Tps. 15^{and} 16
N. Rgs. 81^{and} 82 W.

The correction for this line
will therefore be 90 lks. N.
and ~~5~~^{36 $\frac{2}{3}$} lks. S per mile

N. Range 82 W. of 6th. P. M.
 Churns from the cor. to Sps. 15 and 16
 N. Rgs. 81 and 82 W.

Drum

N. $89^{\circ} 44' W.$ on a true line
 between Secs. 1 and 36.

N. $16^{\circ} 25' E.$

From the cor. descending N. W.
 slope.

- 5.00 Leave Timber.
- 15.00 Begin descending rolling and
 undulating Western Slope.
- 40.00 A granite stone $18 \times 12 \times 10$ set
 12 in. deep, marked "4" on N.
 side, in a mound of earth
 and with pits for "4" Sec. Cor.
- 80.00 A granite stone $24 \times 18 \times 4$ set
 17 in. deep, marked 1 notch on
 E. edge, 5 notches on W. edge,
 in a mound of stone, and with
 pits for Cor. to Secs. 1, 2, 35 and 36.

124
189

200.

Between Tps. 15^{and}
Chambers Land rolling ^{and} undulating,
unfit for cultivation.
Veg.: Grass, ^{and} sage brush.

on a true line

N. $89^{\circ}44'$ W. between Secs. 2^{and} 35.
Na. $16^{\circ}20'$ E.

Running over rolling ^{and} un-
dulating country, with a
gentle slope to the W.

40.00 A granite stone 15 x 12 x 3 set
16 in. deep, marked $\frac{1}{4}$ on N.
side, in a mound of stone
^{and} with pits for $\frac{1}{4}$ Sec. cor.

80.00 A granite stone 24 x 18 x 15, set
16 in. deep, marked 2 notches
on the E. edge, 4 notches on
the W. edge, in a mound of
stone, ^{and} with pits for cor. to
Secs. 2, 3, 34^{and} 35.
Land rolling.

16. N. Range 82 W. of 6th P.M.
Cham Soil, third rate.

Veg.: Grass and sage brush.

on a true line

N. 89° 44' W. between Secs. 3 and 34,
Na. 16° 20' E.

16.00 Scars rolling country and run
over level country.

40.00 A granite stone 18 x 12 x 5 set 12
in. deep, marked 1/4 on N. side,
in a mound of earth and with
pits for 1/4 Sec. cor.

80.00 A granite stone 10 x 10 x 6 set
7 in. deep, marked 3 notches
on E. edge, 3 notches on W.
edge, in a mound of earth,
and with pits for cor. to Secs. 3,
4, 33, and 34.

Land level.

Soil third rate.

Veg.: Grass, sage brush and

126
191.

202.4

Between Tps. 13^{and}
Chamisso grass wood.

on a true line

N. 89° 44' W. between Secs. 4^{and} 33.

N. 16° 25' E.

40.00 A quartz boulder 12 x 10 x 8 set 8
in. deep, marked 1/4 on N. side
in a mound of stone^{and} with
pits for 1/4 Sec. Cor.

80.00 A quartz boulder 12 x 8 x 7, set
5 in. deep, marked 4 notches on
E. edge, 2 notches on W. edge,
in a mound of stone,^{and} with
pits for Cor. to Secs. 4, 5, 32^{and}
33.

Sand nearly level.

Soil third rate.

Veg: Grass, grass wood^{and}
sage brush.

on a true line

N. 89° 44' W. between Secs. 5^{and} 32.

16. N. Range 52 W. of 6th P.M.

Chams Va. $16^{\circ} 25' E$.

14.50 Left bank of Bush Creek.

15.48 Right bank of same, 12 mi. deep,
run S.

19.59 Road up Bush Creek, brs. N.
and S.

40.00 A quartz boulder $10 \times 8 \times 8$ set 6 in.
deep, marked $\frac{1}{4}$ on N. side,
in a mound of earth and with
pits for $\frac{1}{4}$ Sec. cor.

56.58 Road brs. N. $10^{\circ} W$. and S $12^{\circ} E$.

80.00 A quartz stone $12 \times 10 \times 8$ set 8 mi.
deep, marked 5 notches on E,
edge, 1 notch on W. edge, in a
mound of earth, and with pits
for cor. to Secs. 5, 6, 31 and 32.
Sand rolling.

Soil, third rate.

Veg.: Grass and sage brush.

128
193

204

Between Tps. 15^{and}

Chains N. $89^{\circ} 44' W$. ^{on a true line} between Secs. 6^{and} 31
Va. $16^{\circ} 25' E$.

18.00 Begin ascending rocky E. slope
of a hill

40.00 A granite stone 20 x 15 x 10 set
14 in. deep, marked $\frac{1}{4}$ on N.
side, in a mound of earth,
and with pits for $\frac{1}{4}$ Sec. cor.

48.00 Top of hill, vis. N. ^{and} S.W.

49.50 Begin descending over irregular,
rough, rocky, ^{and} generally
Western slope

79.10 The Cor. to Tps. 15 & 16 N. Rgs.
82^{and} 83 W.

Land rolling, hilly ^{and} rocky,
unfit for cultivation.
Veg.: Grass, ^{and} sage brush.

Surveyed Aug. 20 - 1879.

General Description:

16. N. Range 82 W. of 6th. P.M.
 Chains of Sp. 15. N. Rg. 82 W.:

The country embraced within
 this Township is rolling ^{and}
 hilly. Quite a large propor-
 tion of it is fit for culti-
 vation.

The entire Township is well
 watered, ^{and is good grazing}
 land.

Vegetation consists of sage-
 brush, greasewood, grass,
 and on the creek bottoms, wil-
 lows.

From the cor. to Sp. 15 ^{and}
 16. N. Rgs. 82 ^{and} 83 W. running
 N. ~~between~~ ⁱⁿ Sp. 16. N. ^{between} Rgs. 82
 and 83 W.

130
195

~~Between~~ Tpx. 16. N.

Chans. ^{North} Between Secs. 31^{and} 36.

Na. 16° 28' E.

From the cor. running over a rolling W. slope.

34.00 Over gently rolling country.

40.00 A granite stone 14x10x4 set 10 in. deep, marked 14 on W. side in a mound of stone, and with pits for 14 Section cor.

80.00 A granite stone 18x10x8 set 12 in. deep, marked 1 notch on S. edge, 5 notches on N. edge, in a mound of stone for cor. to Secs. 25^{and} 30^{and} 31^{and} 36

Sand rolling.

Soil third rate.

Veg.: Grass^{and} sage brush.

207. 196 131
Between Ranges 2nd & 3rd N. of 6. P.M.
Cham's North between Secs. 25th and 30.

Na. $16^{\circ}25'E$.

From the cor. over rolling
country.

40.00 A granite stone $16 \times 12 \times 8$ set
10 in. deep, marked "4" on N.
side and in a mound of
stone for "4" Sec. cor.

80.00 Granite stone $34 \times 20 \times 6$ set
20 in. deep, marked 2 notches
on S. edge and 4 notches on N.
Edges, in a large mound of
stone, for cor. to Secs. 19,
24, 25 and 30.

Sand rolling.

Soil third-rate.

Vegetation: Grass and sage brush.

North between Secs. 19th and 24th.
Na. $16^{\circ}25'E$.

132 203.
197 ~~Butterfly~~ Feb. 16. A.
Chambers from the cor. over rough rolling
country.

40.00 A granite stone 22x12x6 set
15 in. deep, marked "4 on W. side
and in a mound of stone for "4
Sec. cor.

60.20 Begin ascending S.E. slope.

70.00 Top, bet. N.E. and S.W.

73.00 Begin descending N.W. slope.

78.00 Base of slope, and thence over
rolling country

80.00 A granite stone 18x10x7 set 12
in. deep, marked 3 notches
on S. edge, 3 notches on N.
edge, in a mound of stone
for cor. to Secs. 13, 18, 19 and 24.
Land rolling and hilly.
Soil hard pate.
Veg.: Grass, and sage brush.

Between Ranges 82 and 83 W. of 6. P.M. 198 133
209.
Chains North between Secs. 13 and 18.

No. 16° 25' E.

- 17.00 Dry creek bed, runs W.
- 40.00 A granite stone 10 x 8 x 7 set 7
in. deep, marked 14 on W.
side and in a mound of stone
for 14 Sec. cor.
- 65.50 Creek 2 lks. wide, 11 in. deep,
runs W.
- 79.50 Warm Springs road, brs. N.
70° E. and S 70° W.
- 80.00 A granite stone 12 x 8 x 7 set
8 in. deep, marked 4 notches
on S. edge, and 2 notches on N.
edge, in a mound of stone
for cor. to Secs. 7, 12, 13 and 18.
Sand rolling.
Soil third-rate.
Veg.: Grass and sage-brush.

134
199

210.

~~Between~~ Tps. 16 N.

Cham. North between Secs. 7^{and} 12.

Va. 16° 28' E.

Running over heavy rolling country.

40.00 A granite stone 15 x 10 x 7 set 10 in. deep, marked 1/4 on W. side, and in a mound of rock for 1/4 Sec. cor.

74.90 Dry creek bed, runs W.

80.00 A granite stone 10 x 8 x 7 set 6 in. deep, marked 5 notches on S. edge, and 1 notch on N. edge, in a mound of stone, for cor. to Secs. 16, 7^{and} 12. Sand rolling and hilly.

Soil third rate.

Veg.: Grass, and sage brush.

North between Secs 1^{and} 6.

Va. 16° 25' E.

Between ^{211.} Ranges 82 and 83 W. ²⁰⁰ ¹³⁵
Chains running over rolling and hilly
country.

40.00 A granite stone 24x15x5 set
16 in. deep, marked "4 on W.
side, in a mound of earth
and with pits for "4 Sec. cor.

105.25 Intersect the 4th Standard
Parallel ^{N.} at a point 18.30
chs. E. of the Standard Cor.
To Sp. 17 N. Rgs. 82 and 83 W. and
at said point I set a
granite stone 15x13x12 set
10 in. deep, marked 6 notches
on E. W. and S. and C. C. on N.
sides, in a mound of stone
and with pits for ^{closing} cor. to Sp.
16 N. Rgs. 82 and 83 W.
Sand rolling.
Soil third rate.
Veg: Grass and sage brush.

136 20188212. ^{between} ^{6th P. M.}
~~Sp. 16. N. Rgs. 82^d & 83^d W.~~
Chambers Surveyed Aug. 21, 1879.

General Description:

of
Sp. 16. N. Rg. 82 W.

This Township consists of rolling^d hilly country, while quite a large proportion of it is fit for cultivation.

Nearly all of the country embraced within this Sp. is good grazing land.

The vegetation consists of grass, sage-bush,^d and on the creek bottoms, willows.

From the Corner To Townships 12^d and 13. N. Rgs. 83^d and 84^d W., on the 3^d Standard

213. ^{between} 202 ^{of 6. th p. 137}
Set. Sp. 12. Rgs. 83rd and 84th W.
Chams. Parallel. ^{N.} (The cor. standing
and as described in field
notes of 3rd Standard Parallel ^{N.}
I run

^{South} ~~between~~ ⁱⁿ Sp. 12. N.
between Rgs. 83rd and 84th W.

South between Secs. 1st and 6.

Na. 16° 20' E.

From the cor. ascending
steep N. W. slope of a mound
and.

- 17.00 Along rolling W. slope.
28.50 A ^{pine} 12 in. diam.
35.00 Begin descending S. W. slope.
40.00 A granite stone 12x12x10
set 8 in. deep, marked "4 on
W. side, in a mound of
stones for "4 Sec. cor.
From which a

~~Between Tps. 12. N.~~

Chans. 15 mi. diam. brs. N. 86° E. 25 lks. dist.

" 8 " " " W - 18 " "

52.00 Base of mountain ^{2d} begin ascending N.E. slope.

59.00 Begin descending S.E. slope.

78.00 Begin ascending N.E. slope.

80.00 A granite stone 20x14x12 set 15 mi. deep, marked 1 notch on N. edge, 5 notches on S. edge, ^{2d} in a mound of stone for cor. to secs. 1, 6, 7 ^{2d} and 12.

From which a line 16 mi. diam. brs. N. 20° W. 11 lks. dist

" 10 " " " N. 40° E. 14 " "

" 14 " " " S 60° E 15 " "

" 15 " " " S 20° E 31 " "

Land mountainous.

Useful for cultivation.

Veg.: Grass ^{and} 80 chs. of heavy pine timber.

Between

Ranges 73 and 74 W. of G. P. M.

Chains South between Secs. 7 and 12.

Pa. 16° 30' E.

From the cor. ascending a N.E. slope.

7.25 A pine 12 in. diam.

15.00 Top of mountain brs. S.E. and N.W.

22.00 Begin descending gentle S.W. slope.

40.00 A granite stone 24x15x4 set 17 in. deep, marked "4" on N. side, and in a mound of stone for "4" Sec. cor.

From which a pine 12 in. diam. brs E. 10 lks. dist.

" 7 " " " W. 5 " "

66.00 Base of slope and begin ascending rolling N.E. slope.

78.00 Top and thence over a rolling Eastern slope.

~~Between Tps. 12 & 13~~

Chain
80.00

A granite stone 16x12x8 set
11 in. deep, marked 2 notches
on N. edge, and 4 notches on S.
edge, in a mound of stone
for cor. to Secs. 7, 12, 13 and
18.

From which a

- Pine 30 in. diam. br. N. 75° E. 9 lks. dist.
- " 28 " " S 30° E. 18 " "
- " 7 " " N. 25° W. 21 " "

Sand mountainous, unfit
for cultivation.

veg.: Grass and rocks of heavy
pine timber.

South between Secs. 13 and 18
br. 16° 20' E

From the cor. running over
rolling E. slope.

10.00

Begin ascending N.E. slope.

Retrospect

- Ranges 83 and 84 W. of 6 P.M.
- Chains
- 15.00 Over rolling E. slope.
 - 23.00 Descending S.E. slope.
 - 37.00 Base of slope, and leave timber, - enter open park, hrs E and W.
 - 40.00 A granite stone 12x8x8 set 5 mi. deep, marked "4 on W. side and in a mound of stone for "4 sec. cor.
 - 40.05 Fork of Grand Encampment river, 15 lks. wide, 6 mi. deep, runs W.
 - 47.00 Enter timber, hrs E and W.
 - 47.19 Pine 12 mi. diam.
 - 47.25 Begin ascending N. slope.
 - 76.88 Intersect S. boundary of Wyoming, 5.55 hrs. E. of the 143rd mile post on said line; at which point I set a granite stone 14x10x8 set 10

~~Between Tps 12. N.~~

Chains, in deep, marked C.C. on
N. edge, in a mound of
stone for closing corner to
Fractional Secs. 13 and 18.

From which a

Line 12 in. diam. brs. N. 60° W. 16 lks. dist.

" 18 " " " N. 55° E. 17 " "

" 12 " " " S 70° E 7 " "

Land mountainous, unfit
for cultivation.

Veg.: Grass and 66.88 chs. of
heavy pine timber. *Iron Range*

83 W. the S. Bound. of Wyo. deflects N. 64 lks per mile.

Surveyed Aug. 23-1879.

General Description:

The country on either side
of this line is mountainous
and unfit for cultivation. It
is covered with dense

Between
2.19
208 443
Ranges 83rd and 84th W. of 6. P.M.
tham forests of heavy pine timber, which will render it very valuable.

From the Cor. to Tps. 12th and 13th N. Rgs. 83rd and 84th W. on the 3rd Standard Parallel, ^{N.} running North ~~between~~ in ^{between} Tps. 13th N. Rgs. 83rd and 84th W.

North between Secs 31st and 36th.
Va. $16^{\circ}15' E$.

From the Cor. descending a N. W. slope of mountain.

- 3.80 A pine 16 in. diam.
- 13.00 Base of mountain.
- 13.15 Creek 6 ft. wide, 2 in. deep, runs W.
- 13.25 Begin ascending SW. slope.

~~Between~~ Sp. 13. N.

- Chains 21.00 Begin descending a N.W. slope.
- 37.94 Base of mountain, and a creek 8 lks. wide, 3 in. deep, runs S.W.
- 38.00 Begin ascending steep S.E. slope.
- 40.00 A granite stone 15 x 12 x 6, set 10 in. deep, marked "4 on N. side, in a mound of stone and with pits for "4 Sec. cor.
From which a line 12 in. diam. brs. N. 87° W. 33 lks. dist.
" 6 " " " E - 8 " "
- 61.00 Top of mountain, brs N.E. and S.W.
- 63.00 Begin descending a N.W. slope.
- 75.90 Base of slope and begin ascending
- 80.00 A granite stone 12 x 12 x 10

Between

221.

90210

145

Ranges 53 and 54 W. 46 P.M.

Chains set 8 mi. deep, marked 1 notch on S edge, and 5 notches on N. edge, in a mound of stone, and with pits for cor. to Secs. 25, 30, 31 and 36. From which a

- 1 mi. 6 mi. diam. brs. S. 40° E. 14 lks. dist.
- " 6 " " " N. 70° W. 25 " "
- " 9 " " " S. 74° W. 27 " "
- " 11 " " " N. 65° E. 24 " "

Sand mountainous, unfit for cultivation. Veg: Grass and 80. chs. of heavy pine timber.

North between Secs. 25 and 30. N. 16° 15' E.

(From the cor. ascending).

- 4.82 A pine 12 mi. diam.
- 10.00 Top of mountain brs E and W.

~~Between~~ Sp. 13. A.

- Chains
- 13.30 Descending N.E. slope.
- 39.00 Base of slope.
- 39.60 Creek 10 lks. wide, 4 in. deep, runs W.
- 39.70 Begin ascending S.W. slope.
- 40.00 A granite stone 15 x 4 x 4, set 10 in. deep, marked "4" on W. side, in a mound of stone and with pits for "4" Section bar.
- From which a
- Pin 18 in. diam. brs. E. 65 lks. dist.
- 47.00 Descending a N.W. slope.
- 54.00 Base of slope.
- 54.15 Creek 16 lks. wide, 2 in. deep, runs W.
- 54.20 Begin ascending S.E. slope.
- 57.50 Pin 12 in. diam.
- 69.00 Ascending a S.W. slope.
- 77.00 Along a rolling W. slope,

Chains
0.00

Ranges 83rd and 84th W. of 16, P.M.
A granite stone 24 x 8 x 8 set
15 in. deep, marked 2 notches
on S. edge, and 4 notches on the
N. edge, and in a mound of
stone for Cor. to Secs, 19, 24,
25 and 30.

From which a
line 20 in. diam. br. S. 70° E. 24 lks. dist.

" 7 " " " N. 65° E. 20 " "

" 13 " " " S 35° W. 22 " "

Land mountainous, unfit for
cultivation.

Veg: Grass, and 80. chs. of
heavy pine timber.

North between Secs, 19th and 24th.
Va. 16° 15' E.

From the Cor. running
over rolling W. slope.

5.00 Ascending SW. slope,

- ~~Between Apr. 13. 18~~
- chains
 21.00 Top of mountain ^{E and} W. Thence running over rolling top to
- 23.00 Begin descending N.E. slope.
- 37.00 Base of slope ^{and} begin ascending S. slope.
- 40.00 A granite stone 16 x 12 x 6 set 11 in. deep, marked "4" on W. side in a mound of stone, ^{and} with pits for "W. Sec. box."
- From which a
- Quinn's drain. ^{W. 15 lks. dist.}
- 41.00 Top of mountain ^{and} begin descending N.E. slope
- 60.03 A pine 12 in. diam.
- 64.00 Along an E. slope.
- 71.00 Descending N.E. slope.
- 80.00 A granite stone 24 x 12 x 8 set 16 in. deep, marked 3

Between

225.

214

119

Ranges 83rd and 84th ^{of 16. P.M.}
 Chamnotches, ~~notches~~ on the S.
 and 3 notches on the N. edges
 in a mound of stone and
 with pits for Cor. To Secs.
 13, 18, 19th and 24.

From which a

Line 10 in diam. brs. N. $53^{\circ}E$ 7 1/2 in dist

" 12" " " S $34^{\circ}W$ 13 " "

" 13" " " S $50^{\circ}W$ 27 " "

Land mountainous, unfit
for cultivation.

Veget.: Grass and 80 chs. of heavy
pine timber. Aug. 25, 1879

North between Secs. 13th and 18

No. $16^{\circ}18'E$.

From the Cor. descending
N.E. slope.

10.80 Base of slope, and a cañon
or ravine, runs N. $63^{\circ}W$.

Between Tps. 13. N.

10.90 Begin ascending S.W. slope.

30.00 Running along a steep
W. slope.

40.00 A granite rock in place
6 ft. x 4 ft. x 3 ft. marked "4
on top,

From which an

Aspen E. in. drain. brs. N. 25° W. 33 l. dist.

61.40 Begin ascending S.W. slope.

72.00 Top of mountain brs. N. W.
and S. E.

72.50 Begin descending.

80.00 A granite stone 18 x 12 x 5
set 12 in. deep, marked 4
notches on S. edge and 2
notches on N. edge, in a
mound of stone for cor.
to Secs. 7, 12, 13 and 18.

From which a

Quartz in. drain. brs. S 25° W. 18 l. dist.

Between 227. 216 151
Ranges 73 and 74 W. of P.M.

Chambers Pine & fir. diam. brs. S. 30° E. 20 lbs. dist.
Soil mountainous and broken
unsuit for cultivation.
Veg: Grass and 80 chs. of heavy
pine timber.

North between Secs. 7 and 12
N. 16° 22' E.


From the cor. descending very
steep N. slope.

- 33.00 Base of mountain.
33.70 Creek 20 lbs. wide, 2 mi.
deep, runs N. 40° W.
34.00 Begin ascending a rolling
SW slope and have timber.
40.00 A granite stone 10⁸ x 10 x 6 s & E
11 mi. deep marked 1/4 on W.
side, and is a mound of
stone for 1/4 Sec. cor.
57.00 Top of mountain brs. S. E. and

~~Between Secs. 13. N.~~

- Chains N.W. ^{and} enter heavy timber.
 - 58.00 Begin descending steep N.E. slope.
 - 75.00 Changes to a N. slope, ^{and} becomes very steep.
 - 80.00 A granite stone 18 x 10 x 6 set 12 in. deep, marked 5 notches on S. edge, 1 notch on N. edge, ^{and} in a mound of stone for Cor. to Secs. 1, 6, 7 ^{and} 12.
- Sand mountainous ^{and} rough, unfit for cultivation.
 Veg.: Grasses, ^{and} 5% chs. of heavy pine timber.

North between Secs. 1 ^{and} 6.
 Va. 16° 25' E.
 From the Cor. descending very steep N. slope.

- Between
Chains
229. 218 153
- Ranges 53 and 74 W. of 6, P.M.
- 1.80 Base of slope, and a creek 5
lks. wide, 3 in. deep, runs
West. And begin ascending a
hog-back ridge.
- 2.00 Leave timber.
- 7.50 Top of ridge, brs. E and W, and
begin descending.
- 9.00 Enter timber, brs. E and W.
- 13.20 Base of slope.
- 13.30 A creek 10 lks. wide 4 in.
deep, runs W. 
And leave timber.
- 14.00 Begin ascending a S.E. slope.
- 40.00 A granite stone 15x12x6 set
10 in. deep, marked "4 on W.
side, and in a mound of stone
for "1/4 Sec. Cor.
- 42.00 Begin running along a steep
W slope.
- 48.00 Begin descending steep N.W.

Dist. Sps. 13. N. Rgs. 83 and 84 W. of
Chains slope.

52.00 Enter timber, hrs. N.E. and S.W.

59.00 Leave timber.

61.00 Base of mountain and a
ravine, runs W. Begin as-
cending a steep S. slope.

69.00 Top of mountain hrs. N.E.

69.20 Begin descending a N.W. slope.

80.00 A granite stone 24x15x6
set 16 in. deep, marked 6
notches, on N. S. E. and W.
sides; said cor. sets in
a mound of stone 3 ft.
base, 2 ft. high for cor.
to Sps. 13 and 14, N. Rgs. 83
and 84 W.

Said mountainous and rough
unfit for cultivation.
Veg.: grass, and 13, 30 chs. of
heavy pine timber.

231. 220. 455

Set Tps 13⁴ and 14⁴ N. Rg. 83 W. of 6 P.M.
Chain Surveyed Aug ~~25~~ 26. 1879.

From the cor. to townships
13⁴ and 14⁴ N., ranges 83⁴ and 84⁴
W.

I run
East on a random line
between Tps 13⁴ and 14⁴ N. Rg.
83 W. I set temporary 1/4
Sec. cor. and Sec. cor. at every
40 and 80 chs, and I find the
length of this line to be
6 miles and 32 lks, and the
falling to be 1,44 chs. S.
of the cor. to Tps. 13⁴ and 14⁴
N. Rgs. 82⁴ and 83 W.

The correction for this line
will therefore be 32 lks E.
and 24 lks N. per mile.

Between Sps. 13 and
Chains

From The Cor. To Sps. 13
and 14. N. Rgs. 82 and 83 W.
I run

S. $89^{\circ}50'W$. on a true
line between Secs. 1 and 36.
N. $16^{\circ}25'E$.

From The Cor. ascending a
steep S.E. slope.

- 4.00 Along rolling S. slope.
12.00 Begin ascending E. slope.
20.00 Enter heavy, young as-
pen timber, hrs. N. and S.
34.00 Leave timber.
40.00 A granite stone $23 \times 15 \times 4$
ft 15 in. deep, marked $\frac{1}{4}$
on N. side and in a mound
of stone for $\frac{1}{4}$ Sec. Cor.
45.00 Running along N. slope.

W. N. Range 83 W. of 6th P. M.
 76.00 Begin ascending N. E. slope of
 mountain.

72.50 Top of mountain brs., N. W. S.

73.00 Begin descending N. W. slope.

80.00 A granite stone 15 X 15 X 7
 set 10 in. deep, marked 1
 notch on E. edge, and 5 notches
 on W. edge, in a mound of
 stone, and with pits for
 Cor. to Secs. 1, 2, 35 and 36.

Land rolling and mountainous
 unfit for cultivation.

Veg. grass, and sage brush,
 and 14 chs. of heavy aspen
 timber.

on a true line

S 89° 30' W. bet. Secs. 2 and 35.

Na. 16° 25' E.

From the Cor. descending a
 N. W. slope,

- Between Sps. 13 and 14 N
 chains
- 3.00 Enter timber, brs. N. and S.
- 7.00 Base of mountain, and
 begin ascending E. slope.
- 24.00 Leave timber and running
 over rolling N. slope.
- 27.00 Descending N. W. slope.
- 35.00 Enter timber, brs. N. W. and
 S.
- 40.00 A granite stone 18x10x4
 set 11 in. deep, marked 1/4
 on N. side, and in a mound
 of stone for 1/4 Sec. cor.
 From which a
 line 15 in. diam. brs. S. 36 lks. dist.
- 42.50 Base of mountain.
- 42.90 Creek 6 lks. wide, 2 in.
 deep - runs N.
- 43.00 Begin ascending E. slope
- 47.00 Leave timber
- 58.00 Over rolling N. slope,

Range 83 W. of 6th. P. M.

68.00 Enter timber, br. N. and S.

71.50 A creek 7 lks. wide, 2 in deep runs N.

71.75 Begin ascending gentle E. slope.

79.00 Top, br. N. 8° E. and S 8° W.

80.00 A quartzite stone 18x12x7 set 12 in. deep, marked 2 notches on E. edge, 4 notches on W. edge, and in a mound of stone, for cor. to Secs. 2, 3, 34 and 35.

No trees of required size convenient.

Land mountainous unfit for cultivation.

Veg.: Grass, and 45.00 chs. of heavy pine timber.

on a true line

S. 89° 50' W. bet. Secs. 3 and 34.

Between Sps. 13 and

Chains No. 16° 20' E.

- 1.00 Begin descending gentle ~~south~~ N.W. slope.
- 23.00 Base of slope.
- 23.73 Creek, 8 lks. wide 2 mi. deep, runs N. 50° E.
- 23.80 Begin ascending steep E. slope.
- 33.00 Top of mountain, brs. N.E. and S.W.
- 35.00 Begin descending N.W. slope.
- 40.00 A granite stone 18x10x6 set 12 mi. deep, marked 1/4 on N. side, and in a mound of stone for 1/4 Sec. cor. From which a 1/2 mi. drain, brs. N. 15 lks. dist.
- 45.70 Base of slope.
- 45.75 Creek 5 lks. wide, 2 mi. deep, runs N.E.

14. N. Range 8.3 W. of 6th P.M.
- 45.80 Begin ascending N.E. slope.
- 53.00 Along a N. slope.
- 58.00 Descending a N.W. slope.
- 72.00 Base of slope.
- 72.05 Creek - 4 lks. wide, 3 mi. deep,
runs N 5° E.
- 72.10 Begin ascending N.E. slope.
- 80.00 A granite stone 18 X 12 X 12 set
11 in. deep, marked 3 notches
on E; 3 notches on W. and in
a mound of stone for cor. to
Secs. 3, 4, 33 and 34.
From which a
Dike runs S. 30° W. 29 lks. dist.
" 10 " " " S. 15° E. 27 " "
- Sand mountainous; unfit for
cultivation.
- Veg.: Grass and 80 chs. of heavy
pine timber, and aspen tim-
ber.

162. 227 238. J
Between Tps. 13^{and}
Chains

on a true line
S. 89° 50' W. bet. Secs. 4^{and} 33.
No. 16° 25' E.

From the cor. ascending rolling
N. E. slope.

13.00 Top of mountain bet. S. E.
and N. W.

14.00 Begin descending W. slope.

24.00 Base^{and} then over rolling
N. slope.

34.00 Begin ascending N. E. slope.

40.00 A granite stone 30 x 18 x 5⁸
set 18 in. deep, marked "4
on N. side, and in a mound
of stone, with pits for "4
Sec. cor.

From which a
line 3 in. diam. bet. N. - 12 lks. dist.

57.00 Top of mountain, bet. S. E.
and N. W.

14: N Range 53 W. of 6th P.M.
 53.00 Begin descending S.W. slope.
 69.00 Base of slope.
 71.00 Begin running along a N. slope.

80.00 A granite stone 18x10x4
 set 11 mi. deep, marked 4
 notches on E. edge, 2 notches
 on W. edge, and in a mound
 of stone for cor. to Secs. 4, 5,
 32, and 33,

From which a
 line 10 mi. draw. brs. S 10° W. 24 lks. dist.

" 10 " " " N. 3° W. 15 " "

Sand mountains, unfit for
 cultivation.

Veg.: Grass, and 80 chs. of heavy
 pine timber

on a true line

S. 89° 50' W. bet. Secs. 5 and 32
 Va. 16° 25' E.

464 229 229 240.

Between Tps. 13 and
chains from the cor. along a gentle
N. slope.

25.00 Begin descending N. slope.

40.00 A granite stone 24 x 18 x 5
set 15 in. deep, marked 14 on
N. side, and in a mound of
stone for 1/4 Sec. cor.

From which a
line 8 in. diam. br. S. 14 lks. dist.

56.00 Base and begin ascending
gentle N. E. slope.

75.00 Top, br. N. and S. thence over
rolling top.

79.00 Along a gentle N. slope.

80.00 A granite stone 10 x 10 x 7
set 7 in. deep, marked 5
notches on E. and 1 notch on
N. sides, and in a mound of
stone for cor. to Secs. 5, 6,
31 and 32.

14. N. Range 73 (W. of 6, P.M.)

From which an
Aspen 5 in. diam. brs. 4.30° E. 48 lbs. dist.
Land rolling and mountainous,
unfit for cultivation.
Veg.: Grass and 80 chs. of heavy
aspen and pine timber.

on a true line

S. 89° 50' W. bet. Secs. 6 and 31.
Na. 16° 25' E.

From the cor. running along
a N. slope.

- 5.00 Leave timber.
- 7.00 Begin ascending E. slope.
- 15.00 Top, brs. N. and S.
- 15.50 Descending a S.W. slope.
- 35.00 Descending W. slope.
- 46.00 A granite stone 30 x 12 x 8 set
20 in. deep marked 14 on N.
side, and in a mound of stone
with pits for 14 Sec. cor.

Bel. Tps. 13^{and} 14, N.

- 20.60 Enter timber brs. N. and S.
- 43.00 Descending N.W. slope.
- 47.00 Leave timber.
- 57.50 Base of mountain, and be-
gin ascending S.E. slope.
- 70.00 Top of mountain, brs. N.E.
and S.W.

71.00 Begin descending N.W. slope.

80.32 The cor. to Tps 13^{and} 14, N.
Rgs. 83^{and} 84, N.

Land mountainous, unfit
for cultivation.

Veget.: Grass and sage brush
and 11.40 chs. of heavy pine
and aspen timber.

Surveyed Aug. 27-1879.

General Description
of

Range 83 W. of 6th P. M.

Shams Sp. 13 N. Rg. 83 W.

The character of the country embraced within this township is very rough and mountainous. The land is unfit for cultivation, but is nearly all covered with a very heavy growth of pine and aspen timber.

From the cor. to Sp. 13 and 14 N. Rngs. 83 and 84 W.

From

North between ⁱⁿ Sp. 14 N.

between Rgs 83 and 84 W.

North between Secs. 31 and 36.

Na. 16° 25' E.

From the cor. descending.

168	233	244
	Between Tpx. 14 N.	
	Chains a North-Westerly slope.	
6.00	Base of slope.	
6.80	Creek 6 lks. wide, 3 mi. deep, runs S 16° W.	
7.25	Begin ascending steep S.E. slope.	
32.00	Top of same brs. N.E. and S.W.	
33.00	Begin descending N.W. slope.	
40.00	A granite Stone 18x15x4 set 12 mi. deep, marked 1/4 on W. side, and in a mound of stone for 1/4 Sec. cor.	
43.00	Enter timber, brs. E. and W. and begin descending steep N. slope.	
58.00	Leave timber.	
59.00	Base of slope.	

245.

869

Green Range 83 & 84 N. of 6th Pr. Mer.

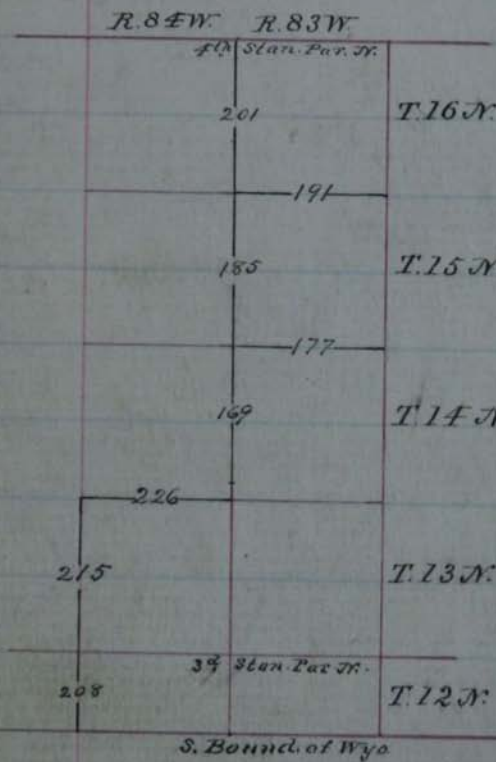
Transcribed

(Book No 4)

234

Ex. B.
Plat. B.

Exteriors by W. O. Downey, contract 103, of
May 12, 1879, Aug. 28, to Sept. 5, 1879.



INDEXED

763

T. 14 N. between 249 235 169

Champs Ranges 83 and 84 W. of G. P. M.

59.60 Begin ascending steep S. slope

80.00 A granite stone 18x18x12, sec 12
in. deep, marked 1 notch on
S. edge, 5 notches on N. edge,
and in a mound of stone
for cor. to Secs. 25, 30,
31 and 36.

Land mountainous and very
rough, unfit for cultivation.
Veg.: Grass, sage brush,
and 15, chs. of heavy aspen
and pine timber.

North between Secs. 25 & 30.

Na. 16° 25' E.

From the cor. ascending a
S. slope.

7.00 Begin running along a
rocky E. slope.

10.00 Begin descending a N.E.

~~Between Tps. 14. N.~~
Chambers slope.

- 23.00 Enter timber and begin descending rolling N. slope.
- 40.00 A granite stone 12x10x5 set 8 in. deep, marked "4" on W. side, and in a mound of stone for "4 Sec. Cor. From which an open 5 in. diam. br. E. 18 lks. dist.
- 45.00 Leave timber and slope becomes gentle.
- 70.00 Begin descending steep N.E. slope.
- 80.00 A granite stone 10x10x6 set 7 in. deep, marked 2 notches on S. edge, and 4 notches on N. edge in a mound of stone, and with pits for cor. to Secs. 19, 24, 25 and 30,

Ranges 83rd and 84th W. of 6 P.M.
 Champaign mountainous and
 stony, unfit for cultivation.
 Veg.: Grass, sage brush and
 25. chs. of heavy aspen
 timber.

North between Secs. 19th and 24th.
 Va. $16^{\circ}25'E$.

- 16.00 Base of slope, thence
 over rolling country.
- 24.00 Begin running over rolling
 W. slope.
- 40.00 A granite stone $20 \times 20 \times 6$
 set 14 in. deep, marked "4"
 on W. side and in a mound
 of stone for "4 Sec. cor.
- 50.00 Begin ascending rolling
 S.W. slope.
- 66.00 Along a W. slope.
- 68.00 Descending N.W. slope.

172

2380252

~~Between Tps. 14. N.~~

80.00 A granite stone $34 \times 18 \times 12$ ⁸
set 22 in. deep, marked 3
notches on S. edge, 3 notches
on N. edge and in a mound
of stone for cor. to Secs. 13,
18, 19 and 24.

Sand mountainous, unfit
for cultivation.

Veg.: Grass and sage-brush.

North between Secs. 13 and 18,
N. $16^{\circ} 28' E$.

From the cor. descending a
N.W. slope.

- 5.50 Begin ascending S.W. slope.
- 15.00 Along W. slope.
- 17.00 Descending N.W. slope.
- 30.00 Base of slope.
- 33.00 Descending N. slope.
- 37.00 Descending N.E. slope.

Between
Chains

Ranges 83 and 84 W. of

40.00 A granite stone 18x10x6
set 12 in. deep, marked "4
on W. side, and in a mound
of stone for "4 Sec. cor.

56.00 Begin running over rolling
Western slope.

73.00 Descending N. slope.

79.00 Ascending S. slope.

80.00 A granite stone 36x12x6
set 18 in. deep, marked 4
notches on S. edge, and 2
notches on N. edge, and in a
mound of stone for cor. to
Secs. 7, 12, 13 and 18.

Sand mountainous and
rocky, unfit for cultivation
Veg.: Grass, and sage brush.

North bet. Secs. 7 and 12,
No. 16° 25' E.

~~Between Twp. 14. N.~~
Chains

From the cor. ascending a
S. slope.

5.00 Top, brs. E. and W. and begin
descending N. slope.

17.50 Begin ascending rolling S.
slope.

22.00 Begin descending over heavy
rolling ground.

40.00 A granite stone 18x12x8
set 12 in. deep, marked 1/4
on N. side, and in a mound
of stone for 1/4 Sec. cor.

52.00 Base of slope

54.00 Right bank of Grand Em-
campment river, 6 in. deep
runs N. 28° E.

55.70 Left bank of same.

80.00 A granite stone 12x8x7
set 8 in. deep, marked 5

Between

253241 6th P.M. 175

Ranges 83 and 84 W. of
chains notches on S. edge, 1 notch
on N. edge and in a mound
of earth and stone and with
pits for leor. to Secs. 1, 6,
7 and 12.

Sand: S. $2\frac{1}{3}$ mountainous;
N. $1\frac{1}{3}$ level. Unfit for culti-
vation

veg.: Grass and sage brush and
on the river bottom, wil-
lows.

North bet. Secs. 1 and 6.

Pa. $16^{\circ} 28' E.$

Running over nearly level
bottom.

32.00 Left bank of Grand Em-
campment river, 9 in. deep,
runs N. from the S.E.

Running along in river.

~~Set~~ ¹¹ ~~11~~ ¹¹ N. Rgs. 83 and 84 W. ^{of 6. P.M.}

40.00 As the true point for this
"4 Sec. Cor. falls in the river
I continue on to

44.00 A point on the line on
left bank of Grand Em-
campment river at which
point I set a flint boulder
18x12x4 set 12 in. deep,
marked W.C. "4 on W. side
for "witness Cor" to "4 Sec.
Cor. said cor. set in a
mound of stone, ^{46 ft. N. of true point}

80.00 A granite boulder 14x10x7
set 10 in. deep, marked 6
notches on N. S. E and W.
sides, in a mound of
stone 2 ft. high, and 3 ft.
base and with pins for cor.
to Sps. 14 and 15. N. Rgs. 83
and 84 W.

Bet Sps. 14^{and} 15, N. Rgs. 83 W. for
chains and nearly all level bot-
tom.

Soil 3rd rate.

Note: Along the N. 1/2 of this
line there is considerable
scattering cotton-wood and
aspen timber.

Surveyed Aug. 28, 1879.

From the cor. to Sps. 14^{and}
15, N. Rgs. 83^{and} 84 W.

Run

East on a random
line between Sps. 14^{and} 15
N. Rg. 83 W.

I set temporary 1/4 Sec.
and Sec. corners at every
40^{and} 80 chains.

Between Tps. 14^{and} and
 chains I find the length of this
 line to be 5 miles ^{and}
 79 chs. and the falling to
 be 1.22 chs. S. of the Cor.
 to Tps. 14^{and} 15. N. Rgs. 82
 and 83 W.

The correction for this
 line will therefore be 100
 lks. N. and 20 $\frac{1}{3}$ lks. N. per
 mile.

From the Cor. to Tps. 14
 and 15. N. Rgs. 82 and 83 W.:

I run

S 89° 51' W, on a true
 line between Secs. 1 and 36
 Va. 16° 20' E.

Running over gently undulating country.

15. N. Range 83 W. ^{of 6th P.M.}
 Chains 40.00 A granite stone 16 x 14 x 3
 set 11 in. deep, marked "4
 on N. side, in a mound of
 earth and with pits for "4
 Sec. cor.

80.00 A piece of Silicate of iron
 10 x 9 x 7 set 7 in. deep,
 marked 1 notch on E. edge,
 and 5 notches on W. edge,
 in a mound of stone and
 with pits for cor. to Secs.
 1, 2, 35 and 36.

Sand undulating.

Soil 3^d rate.

Veg.: Grass and sage brush.

on a true line

S. 89° 51' W. bet. Secs. 2 and 35
 Va. 16° 25' E.

40.00 A granite stone 12 x 8 x 6
 set 9 in. deep, marked "4

Between Tps. 14^{and}

Chains on N. side, in a mound of earth^{and} with pits for 1/4 Sec. cor.

80.00 A granite boulder 13x8x7 set 10 mi. deep, marked 2 notches on E. edge, ^{and} 4 notches on W. edge, in a mound of earth, ^{and} with pits for cor. to Secs. 2, 3, 34^{and} 35.

Sand undulating.

Soil 3^d/₁₁ rate.

Veget. : Grass ^{and} sage brush.

on a true line

S. 89° 51' W. bet. Secs. 3^{and} 34, Va. 16° 22' E.

40.00 A granite boulder 12x7x7 set 7 mi. deep, marked 1/4 on N. side, in a mound of earth, ^{and} with pits for

15. N. Range 83 W. of 6th P.M.

Chambers Sec. Cor.

59.70 Creek, 3 lks. wide, 2 mi. deep
ms. N. 16° W.

61.00 Temporary road hrs. N. 20° W.
and S. 20° E.

80.00 A granite boulder $10 \times 9 \times 7$
set 6 in. deep, marked 3
notches on the E. edge, and
3 notches on the W. edge, in
a mound of earth, and
with pits for cor. to Secs.
3, 4, 33 and 34.

Sand rolling
Soil third rats.

Neg.: Grass and sage brush.

^{on a true line}
S. $89^{\circ} 51'$ N. bet. Secs 4 and 33
N. $16^{\circ} 28'$ E.

40.00 A granite boulder $10 \times 8 \times 6$
set 6 in. deep, marked 4

Between Tps. 14^{and}
Chains on N. side, in a mound
of earth^{and} with pits for 14
Sec cor.

80.00

A piece of quartz 12x9x8
set 7 mi. deep, marked 4
notches on E. edge, ^{and} 2
notches on N. edge, in a
mound of earth, ^{and} with
pits for cor. to Secs. 4, 5,
32 ^{and} 33,

Sand rolling.

Soil third rate.

Veg: Grass ^{and} sage brush

^{on a true line}
S. 89° 37' N. bet. Secs. 5 ^{and} 32
W. 16° 25' E.

40.00

A granite stone 24x12x7
set 15 mi. deep, marked 14
on N. side, in a mound
of stone, ^{and} with pits for

15. N Range 83 W. of 6th P.M.

Chams 1/4 Sec. Cor.

80.00 A granite stone 18x12x6
set 12 in. deep, marked 5
notches on E. edge, and 1 notch
on W. edge, in a mound of
stone and with pits for Cor.
to Secs. 5, 6, 31 and 32.

Land undulating.

Soil third rate.

Veg: Grass and sage brush

^{of} $89^{\circ} 51'$ N. bet. Sec. 6 and 31.
on a true line

Na. $16^{\circ} 28'$ E.

38.10 Cherokee road brs. N and
S.

40.00 A quartz boulder. 18x10x8
set 11 in. deep, marked 1/4
on N. side, in a mound
of stone and with pits for
1/4 Sec. Cor.

Left Sp. 14th and 15th N. R. 83 W. of
~~brush~~

63.15 Right bank of Grand Em-
 campment river, 10 mi deep,
 runs N. 10° E.

64.70 Left bank of Grand Em-
 campment river

79.00 The cor. to Sp. 14th and 15th N.
 Rgs. 83rd and 84th W.

Land level.
 Soil third rate,
 Veg.: Grass and sage brush
 and along the river bottom
 some willows.

Surveyed Aug. 29 1879

General Description
 of
 Sp. 14th N. R. 83 W.
 The country embraced
 within this Township is

265. ^{between} 251 ^{to} 252 ^{to} P. M. 185

~~Set~~ Sp. 15, Rgs. 83 and 84 W. of
Chains diversified: The S. 1/2 being
partially covered with
heavy pine and aspen tim-
ber, while the N. 1/2 con-
sists of rolling country,
generally fit for agricul-
tural purposes.

The Sp. is well watered
by numerous clear and pure
streams.

From the Cor. To Sp. 14 and
15 N. Rgs. 83 and 84 W.
Draw

North ~~between~~ ⁱⁿ Sp.,
15 N. ^{between} Rgs. 83 and 84 W.

North bet. Secs. 31 and 36.
N. 16° 22' E.

~~Between~~ Apr. 15. A.

Chains from the cor., running over level creek bottom

37.00 ^{Leave} Level creek bottom, and enter undulating country.

40.00 A granite boulder $10 \times 9 \times 8$ set 6 in. deep, marked $\frac{1}{4}$ on N. side, in a mound of earth and with pits for $\frac{1}{4}$ Sec. cor.

46.10 Cherokee road, hrs. N. 70° W. and S. 70° E.

80.00 A quartz boulder $10 \times 10 \times 6$ set 6 in. deep, marked 11 notch on S. edge, and 5 notches on N. edge, in a mound of stone, and with pits for cor. to Secs. 25, 30, 31 and 36.

Sand; S $\frac{1}{2}$ level; N. $\frac{1}{2}$ undulating.

Between

267.

253

187

Ranges 83rd and 84th W.
Chambers 3rd rate.

of G. P. M.

veg.: Grass and sage brush.

North bet. Secs. 25th and 30,
No. 16° 20' E.

40.00 A granite stone 11 x 10 x 6
set 7 in. deep, marked 4
on N. side in a mound
of earth and with pits for
1/4 Sec. cor.

47.90 Temporary road bet E and
W.

80.00 A granite stone 18 x 14 x 4
set 12 in. deep, marked 2
notches on S. edge, and 4
notches on N. edge, in a
mound of earth and with
pits for cor. to Secs. 19, 24
25th and 30.

Land undulating.

~~Between~~ Apr 15. N.
 Chamae Soil Third rate.

Neg. Grass and sage brush.

North bet. Sec. 19 and 24
 Va. 16° 15' E.

40.00 A granite stone 16x12x5
 set 11 in. deep, marked 1/4
 on N. side in a mound of
 earth and with pits for 1/4
 Sec. cor.

80.00 A granite stone 17x12x4
 set 12 in. deep, marked 3
 notches on S. edge and 3
 notches on N. edge, in a
 mound of earth and with
 pits for cor. to Secs. 13, 18,
 19 and 24.

Sand rollin.

Soil Third rate.

Neg: Grass and sage brush.

Between

260.2550th. P. M. 189

Ranges 83 and 84 W. of

Chains North bet. Secs. 13 and 18.

Na. 16° 20' E.

40.00 A granite stone 12x7x7
set 7 in. deep, marked 1/4
on W. side, in a mound of
earth and with pits for 1/4
Sec. cor.

80.00 A granite stone 16x14x5
set 11 in. deep, marked 4
notches on S. edge, and 2
notches on N. edge, in a
mound of earth and with
pits for cor. to Secs. 7, 12,
13 and 18.

Sand rolling,

Soil 3% rate

Neg.: Grass and sage brush.

North bet. Secs. 7 and 12

Na. 16° 25' E.

190

256 270.

~~Between~~ ~~Sp. 15. N.~~

24.78

Road hrs. SE^{and} N.

40.00

A granite stone 14x10x6
set 9 in. deep, marked 1/4
on N. side in a mound
of earth ^{and} with pits for
1/4 Sec. cor.

80.00

A granite stone 12x10x10
set 8 in. deep, marked 5
notches on S edge, ^{and} 1
notch on N. edge, in a
mound of stone ^{and} with
pits for cor. to Secs. 1, 6,
7 ^{and} 12.

Sand rolling,
Soil third rate,
Veg.: Grass ^{and} sage brush.

North bet. Secs. 1 ^{and} 6,
Va. 16° 25' E,

40.00

A granite stone 14x12x4

between
27. 257 of th. P. (M.) 191
Ranges 83 and 84 W, of a
chain set 9 mi. deep, marked 14
on N. side, in a mound of
earth and with pits for 14
Sec. cor.

80.00 A granite stone 16 x 7 x 7
set 10 mi. deep, marked 6
notches on the N. S. E. and W
edges; said cor. is in a
mound of stone 3 ft. base,
and 2 ft. high, and with pits
for cor. to Tps. 15 and 16 N,
Rgs. 83 and 84 W,
Land rolling,
Soil third rate,
Veg: Grass and sage brush.

Surveyed Aug. 30, 1879.

From the cor. to Tps. 15

172

258 272.

Between Tps, 15^{and}
chains^{and} 16. N. Rgs. 83^{and} 84 W.

I run

East on a random
line between Tps, 15^{and} 16
N. Rg. 83 W.

I set temporary $\frac{1}{4}$ Sec. ^{and}
Sec. corners at every 40
^{and} 80 chs. ^{and} I find the
length of this Tp. line to
be 5 miles ^{and} 78.86 chs
in length, ^{and} the falling
to be 2.98 chs, N. of the
cor. to Tps, 15^{and} 16 N. Rgs.
82^{and} 83 W.

The correction for this
line will therefore be 1.14
chs, N. ^{and} $4\frac{1}{2}$ lks, S. per
mile.

From the cor. to Tps, 15

16. N. Range. 83 W. of 6th P.M.
 chains and 16. N. Rgs. 82 and 83 W.
 I run

N. $89^{\circ}39'W.$ on a true
 line between Secs 1st and 36
 Va. $16^{\circ}15'E.$

From the cor. descending
 a rolling W. slope.

- 17.20 Base of slope.
- 18.00 A gulch runs S. $32^{\circ}W.$
- 18.50 Begin ascending a gentle
 Eastern slope.
- 40.00 A granite stone $30 \times 18 \times 6$
 set 18 in. deep, marked "4
 on North side, in a mound
 of stone for "4 Sec. cor.
- 50.00 Begin running over, gentle
 N. slope.
- 61.00 Begin descending, rolling
 N. W. slope.
- 80.00 A granite stone $22 \times 15 \times 6$

194

260

2nd 24.Between Tps. 15^{and}

Chains set 15 mi. deep, marked 1 notch on E edge, 5 notches on W. edge ^{and} in a mound of earth with pits for cor. to Secs. 1, 2, 35 ^{and} 36.

Sand hilly.

Soil Field rats.

Neg. Grass ^{and} sage brush.

^{on a true line}
N. 89° 39' W. bet. Secs. 2 ^{and} 35.

N. 16° 20' E.

7.00 Base of slope.

8.00 Begin running over rolling ^{and} broken ground.

40.00 A granite stone 18x12x10 set 12 mi. deep, marked 1/4 on N. side in a mound of earth ^{and} with pits for 1/4 Sec. cor.

45.00 Begin descending a N.W.

16. N. Range 83 (N. of 6th P.M.)
Chanslope. [slope

51.00 Base of slope, begin ascending S.E.

56.50 Begin descending W. slope.

59.00 Base of bluff.

59.20 Right bank of a part of the
North Platte river, 10 mi.
deep, runs N. 35° W.

61.30 Left bank of same, thence
across an island.

79.20 West bank of island, and
right bank on North Platte
river proper, 12 mi. deep,
runs N 5° W.

Note: As the Cor. to Secs.

2, 3, 34 and 35 will fall in
the river, I therefore, at
this point, set a granite
boulder, 15 x 10 x 8 set 10 mi.
deep, marked 2 notches
on E. edge, and 4 notches on

Between Sps. 15^{and}
Cham's N. edge ^{and} W. C. on N. side
for "Witness Cor." to Secs.

2, 3, 34 ^{and} 35, 80 lbs. E. of true point

80.00

True point for sp. to dist 2, 3, 34 & 35 in river
Land valley

Soil third rate.

Veg: Grass, sage brush ^{and}
willows.

on a true line

S. 89° 39' N, between Secs. 3 & 34
Na. 16° 20' E.

1.80

Right bank of North Platte
river.

2.00

Begin ascending very steep
N.E. slope.

15.00

Along rocky ^{and} rolling N.
slope.

30.00

Grass running over N.
slope, ^{and} fence running
over broken country.

40.00

A granite stone 24x15x3

16. N. Range 83 (N. of 6th P.M.)

Chains set 10 mi. deep, marked "4
on N. side, and in a mound
of stones for "4 Sec. cor.

43.00 Begin descending rocky
W. slope.

49.50 Base of slope.

49.70 Right bank of Grand Em-
campment river, 10 mi. deep
runs N. 10° E.

50.90 Left bank of same.

51.00 Begin ascending rolling and
rocky E. slope.

65.00 Top: hrs. N. and S. W. Thence
over rocky top to

70.00 A granite stone 30 x 18 x 8
set 10 mi. deep, marked 3
notches on E edge, 3 notches
on W. edge, in a large
mound of stones for cor. to
Secs. 3, 4, 33 and 34.

178

278.1

264

Between Tps. 15^{and}
 Chams and hilly ^{and} broken.

Very rocky, unfit for cul-
 tivation.

Veg.: Grass ^{and} sage brush.

on a true line

N. $89^{\circ}39'$ W. bet. Secs. 4 ^{and} 33.
 Na. $16^{\circ}22'$ E.

- 1.00 Begin descending rocky W.
 slope.
- 5.00 Begin ascending E. slope.
- 22.00 Top of hill bet. N. ^{and} S.
- 23.00 Begin descending rocky
 W. slope.
- 40.00 A granite stone $15 \times 15 \times 5$
 set 10 in. deep, marked "4"
 on N. side, ^{and} in a mound
 of stone for "4 Sec. Cor.
- 66.00 Base of slope, ^{and} thence
 over rolling country.
- 80.00 A granite stone $18 \times 12 \times 10$

16. N. Range 83 (W. of 6th P.M.)

Chamisset 12 mi. deep, marked 4 notches on the E. edge and 2 notches on the W. edge, in a mound of earth and with pits for cor. to Secs. 4, 5, 32 and 33.

Land hilly and rocky, unfit for cultivation.

Veg.: Grass and sage brush.

on a true line

N. $89^{\circ}39'W$, bet. Secs. 5 and 32,

No. $16^{\circ}25'E$.

40.00 A piece of quartz, $10 \times 9 \times 6$ set 7 mi. deep, marked "4" on N. side, in a mound of earth, and with pits for $\frac{1}{4}$ Sec. cor.

80.00 A piece of quartz $14 \times 8 \times 6$ set 9 mi. deep, marked 5 notches on E. edge and 1

200 266 280. 6th. P. M.

Bet Tps 15^{and} 16. N. Rgs. 83 W.
Chains notch on W. edge, in a mound of earth and with pits for cor. To Secs. 5, 6, 31^{and} 32.

Sand rolling,
Soil third rate
Veg: Grass and sage brush

on a true line
N. 89° 39' W. bet. Secs. 6 & 31
Va. 16° 22' E.

40.00 A granite stone 18x14x5
set 12 in. deep, marked "u"
on N. side, in a mound
of stone and with pits for "u"
Sec. cor.

78.86 The cor. To Tps. 15^{and} 16. N.
Rgs. 83^{and} 84 W.
Sand rolling,
Soil third rate
Veg: Grass, and sage brush.

between 281. 267
6th P.M. 201

~~Oct~~ ~~Apr~~ 16. N. Rgs. 83rd & 84th W. of
Chans Surveyed Sep. 1-1879

267

General Description:

Sp. 15 N. Rg. 83 W.

The country embraced within this Township is nearly all rolling land, soil third rate, except the N. E. portion which is broken and hilly and unfit for cultivation.

From the Cor. to Sp. 15th &
16 N. Rgs. 83rd & 84th W.

Run

~~North~~ ⁱⁿ between Sp. 16 N.

between Rgs. 83rd & 84th W.

North bet. Secs. 31st & 36th

202 ~~203~~ 282.
268 ~~Between~~ Sp. 16. N.
Chains Na. 16° 20' E.

32.20 Cow break, 15 lks wide, ms. N. 40° E.

40.00 A granite boulder 12 x 8 x 6
set 8 in. deep, marked 1/4
on N. side, in a mound
of earth and with pits for 1/4
Sec. cor.

41.00 Leave level bottom and
enter rolling country

80.00 A granite stone 20 x 16 x 5
set 14 in. deep, marked 1
notch on S. edge and 5 notches
on N. edge, in a mound
of earth and with pits for
Cor. to Secs. 25, 30, 31 and 36.
Sand: S. 1/2 level; N. 1/2 rolling.
Soil 3^d rate.
Veg: Grass and sage brush.

North between Secs 25 & 30.

between
283. 269 6th. P. M. 203
Ranges 83 and 84 N. of A.
Na. 16° 25' E.

40.00 A granite stone 16x12x6 set
11 in. deep, marked "4" on W.
side, in a mound of earth
and with pits for "4" Section
cor.

80.00 A quartz boulder 12x10x9
set 8 in. deep, marked 2
notches on S. edge and 4
notches on N. edge, in a
mound of earth for cor. to
Secs. 19, 24, 25 and 30.

Sand rolling.

Soil 3^d rate.

veg: Grass and sage brush.

North bet. Secs. 19 and 24.
Na. 16° 20' E.

40.00 A granite boulder 12x10x6
set 8 in. deep, marked "4" on

Between Sp 16 N.

Chains N. side, in a mound of stone and with pits for 11/4 Sec. Cor.

53.00 Begin ascending a S. slope of bluff.

69.00 Top hrs. N. W. and E., thence over high plateau.

80.00 A granite boulder 12x10x6 set 7 mi. deep, marked 3 notches on S. edge, and 3 notches on N. edge, in a mound of stone and with pits for cor. to Secs. 13, 18, 19 and 24.

Sand rolling.

Soil 3^d rate.

Veg.: Grass, and sage brush

North bet. Secs. 13 and 18.

Va. 16° 25' 16"

between

Ranges 83 and 84 W. of n

40.00 A granite boulder 12x10x6
set 8 in. deep, marked 1/4 on
W. side, in a mound of
stone and with pits for 1/4
Sec. Cor.

80.00 A granite boulder 18x12x10
set 12 in. deep, marked 1/4
notches on S. edge, and 2
notches on N. edge, in a
mound of stone and with
pits for Cor. to Secs. 7, 12,
13 and 18.

Land: high, rolling plateau.
Soil 3/4 prairie.
Veg.: Grass and sage brush.

North bet. Secs. 7 and 12.
N. 16° 25' E.

40.00 A granite boulder 12x10x6
set 8 in. deep, marked 1/4

~~Between Tps. 16. N.~~

Chains on W. side, in a mound
of stone and with pits for
1/4 Sec. Cor.

80.00 A quartz boulder 15x10x7
set 10 in. deep, marked 5
notches on S. edge, and 1
notch on N. edge, in a
mound of stone and with
pits for Cor. to Secs. 1, 6,
7 and 12.

Sand rolling,
Soil 3^d rate.

Veg.: Grass and sage brush

North bet. Secs. 1 and 6.

Na. 16° 25' E.

40.00 A granite stone 12x10x8
set 8 in. deep, marked 1/4
on W. side in a mound
of earth and with pits

between

Ranges 83 and 84 W. of a
Chain for 1/4 Sec. Cor.

103.83

Intersect the 4th standard
parallel ^{N. 17} ~~23~~ chs. ^{W. 11} ~~11~~ of the 1/4
Standard Cor. ^{Spec} ~~1~~ ^{1 of Sec. 31} ~~1~~ Sp. 17 N.
Rgs. 83 ~~1~~ ~~1~~ W. at which point
I set a quartz boulder 12 x
10 x 8 set 8 in. deep, marked
6 notches, on S. E. and W. also
C.C. on N. sides. — in a
mound of earth ^{and} with
pits for closing cor. to Sp.
16 N. Rgs. 83 and 84 W. In Range
83 W. the 4th Stan. Par. N. has an excess of 78 links
per mile in measurement.

Surveyed Sep. 2^d 1879.

General Description:
of
Sp. 16 N. Rg. 83 W.
This Sp. consists entirely
of rolling ^{and} undulating

~~Between~~ Tps. 12, N.
Champaign country. It is well wa-
tered; the North Platte
river flows through the
Tp. from S.E. to N.W.

From the Cor. to Tps. 12
and 13, N. Rgs. 84 and 85 W.
on the 3^d Standard
Parallel^{J.K.} (The corner stand-
ing, and as described in
the Field notes of the 3^d
Standard Parallel^{J.K.})

I run

South bet. ⁱⁿ Tps. 12, N.
between Rgs. 84 and 85 W.

South bet. Secs. 1 and 6
No. 16° 25' E.

From the Cor. descending

between

289. 275 ^{6th. P. M. 209}

Ranges 84 and 85 W. of a
change gentle S. slope.

12.00 Base of slope.

20.27 A creek 8 lks wide, 3 in deep,
runs E.

23.00 Leave timber and enter open
park - extends E and W.

39.50 A creek, 6 lks. wide 4 in,
deep, runs N. E.

40.00 A granite boulder 12 x 10 x 6
set 8 in. deep, marked "4 on
W. side, in a mound of
stones. and with pits for "4
Sec. Cor.

50.00 Leave park and enter heavy
pine timber, brs. E and W.

62.78 Creek 10 lks. wide, 6 in. deep,
runs E.

62.80 Begin ascending rolling N.
W. slope.

68.00 Top of slope, brs. S. E. and W.

Between Tps. 12, N.

76.00 Begin descending SW slope

80.00 A granite stone 20x14x5
set 14 in. deep, marked 1
notch on the N. edge, 5
notches on S. edge, in a
mound of earth and stone
and with pits for cor. to
Secs. 1, 6, 7 and 12,

- From which a
- line is drawn. br. N. 75° E. 40 lks. dist
- " 8 " " S 75° E. 37 " "
- " 7 " " S 68° W. 38 " "

Land rolling - unfit for
cultivation.

Veg: Grass and 53. chs. of
heavy pine timber.

South bet. Secs. 7 and 12.
Va. 16° 25' E.

From the cor. descending

Intercom

201. 277 6th. P.M. 244

Ranges 84 and 85 W. of
Chambers. W. slope.

- 4.00 Base of slope and thence over
rolling country.
- 11.39 Kahns' Peak road, brs. N. E.
and S 28° W.
- 11.50 Begin ascending N. slope.
- 18.00 Ascending N. E. slope.
- 25.67 A prairie 12 mi. diam.
- 38.90 A creek 6 lks. wide, 3 mi.
deep, runs N. 40° E.
- 39.85 Same creek - runs N. 10° W.
- 40.00 A granite stone 15 x 12 x 4
set 10 in. deep, marked "4
on W. side, in a mound
of stone for "4 Sec. cor.
From which a
prairie 9 mi. diam. brs. N. 75° E. 18 lks. dist.
- 40.12 Creek, 6 lks. wide, 2 mi. deep
runs N 12° E.
- 69.00 A prairie 12 mi. diam.

212

278. 292.

~~Between Tps. 12th.~~

Chain
71.00 Top of mountain hrs. S.E.
and N.W.

72.00 Begin descending gentle
S.W. slope.

80.00 A granite stone 12 x 10 x 8
set 8 in. deep, marked 2
notches on N. edge and 4
notches on S. edge, in a
mound of stone for cor.
To Secs. 7, 12, 13 and 18.

From which a
fir 7 in. diam. hrs. S 55° W. 26 lks. dist.

" 7 " " N. 56° W. 22 " "

and 7 " " " S. 35° E. 22 " "

Said mountains, unfit
for cultivation.

Veget.: Grass and 80. chs. of pine
and fir timber.

South bet. Secs. 13 and 18.

between

Ranges 81 and 83 W. of
Chain No. 16° 45' E.

From the cor. descending S.W.
slope.

15.50 Pine 14 in. diam.

20.00 Running along W. slope;

40.00 A granite stone 12x10x6 sec
8 in. deep, marked "4 on W.
side, and in a mound of stone
for "4 Sec. cor.

From which a
fir 6 in. diam. br. W. 25 lbs. dist.

Pine 30 " " " E. 38 " "

47.08 A pine 12 in. diam.

50.00 Descending a S. slope,

64.00 Descending S.E. slope,

77.85 Intersect S. boundary of Wyo-
ming Territory at a point
5.10 chs. E. of the 149th. mile
post on said line, at which
point I set a granite stone

Set. Sp. 12 N. Rgs. 84 and 85 W.

Chains 12x12x8 set 8 mi. deep, marked
 C.C. on the N. side, in a
 mound of stone for closing
 cor. To fractional Secs.
 13rd and 18.

Said mountainous unfit
 for cultivation.

veg: Grass and 77, 85 chs.
 of heavy pine and fir timber.

Note: The country on the
 E. side of the foregoing sp.
 line is very mountainous
 and rocky; the land is un-
 fit for cultivation. All
 along the entire line the
 country is covered with
 heavy pine and fir tim-
 ber.

Surveyed Sep 3, 1879.

~~St. 13. N. Rgs. 84 and 85 W. of a~~
Chambers

From the cor. to Sps. 12 and
13 N. Rgs. 84 and 85 W. on the
3^d Standard Parallel N.
Dunn

North between ⁱⁿ Sps. 13 N.
between Rgs. 84 and 85 W.

North bet. Secs. 31 and 36.
Va. 16° 25' E.

From the cor. ascending gentle
N. & S. slope.

- 6.00 Ascending S.W. slope,
- 30.21 A pine 10 in. diam.
- 40.00 A granite stone 14 x 12 x 8
set 10 in. deep; marked 1/4
on N. side, in a mound of
stone, with pits for 1/4
Sec. cor.

~~Between~~ Apr 13. A
 Chams' town, which a

1 mi. E. Indian. brs. E - 11 lks. dist.

" 12 " " W - 15 " "

58.00 Top of mountain brs S.E. and
 N.W.

60.00 Begin running along rolling
 E. slope

69.00 Descending a N.E. slope.

73.39 A pine 7 in. diam.

79.85 Base of mountain.

79.90 Creek 8 lks. wide, 3 in. deep,
 Runs E.

80.00 A granite stone 20 x 12 x 6.
 set 14 in. deep, marked 1
 notch on S. edge, and 5
 notches on N. edge, in a
 large mound of stone
 for cor. to Secs. 25, 30,
 31 and 36.

From which a

Between
 Ranges 84 and 85 W. of a

chain of spruce con. drain. br. S. 40° W. 34 lbs. dist

" 18 " " " S 15° E. 66 " "

" 15 " " " N 65° E 39 " "

Land broken and mountainous,
 unfit for cultivation.

Vegetation: Grass and 80. chs. of
 heavy pine and spruce timber

North between Secs 25 and 30
 Va. 16° 25' E.

3.00 Begin ascending steep S.E.
 slope of mountain.

9.34 A pine 12 in. diam.

40.00 A granite stone 13 x 12 x 6 set
 10 in. deep, marked "4" on W.
 side, in a mound of stone
 for "4" Sec. cor.
 From which a

Pine 12 in. diam. br. N. 82° E. 11 lbs. dist.

45.00 Begin ascending rocky S.

~~Between~~ Twp. 13. N.

Chains slope

63.00 Top of mountain hrs. E and W.

65.00 Begin descending gentle N. W. slope.

77.00 Base of slope and begin ascending S. slope.

80.00 A granite stone 48 x 18 x 8 set 25 in. deep, marked 2 notches on S. edge and 4 notches on N. edge; said cor. sets in a large mound of stone, and with pits for cor. To Secs. 19, 24, 25 and 30.

No trees of required size convenient.

Land rocky and mountainous, unfit for cultivation.

veg: grass and rocks of heavy pine and spruce timber

Between
299.285 219
Ranges 84 and 85 W. of 6. P.M.
Chains North between Secs. 19 and 24

No. $1\frac{6}{8}^{\circ} 25' E.$

From the cor. ascending S
slope.

8.00 Top of mountain, bet. E and W.
Thence over rolling country
to

32.94 A pile 15 in. diam.

39.00 Begin descending steep N.E.
slope.

40.00 A granite stone in place
 $36 \times 24 \times 20$ marked $1\frac{1}{4}$ on W.
side, for $1\frac{1}{4}$ sec. corner.
From which a
pile 30 in. diam. bet. E. & 2 lbs. dist.

68.35 Base of mountain.

68.40 Creek 8 lbs. wide, 2 mi. deep
runs E.

70.00 Begin ascending steep S.E.
slope of mountain.

220 286.300. 17
~~Between Tpx 13. N.~~

Chains
80.00

A granite stone 16 x 12 x 8
set 11 mi. deep, marked 3
notches on S. edge and 3
notches on N. edge, in
a mound of stone for loc.
to Secs. 13, 18, 19 and 24.

From which a
Piv 24 mi. diam. brs. S 70° N. 23 lks. dist
" 15 " " " N. 68° W. 24 " "
" 10 " " " N. 63 E 55 " "
" 8 " " " S. 62 E 29 " "

Land mountainous and
rough, unfit for cultivation.
Town.

veg: Grass and 80 chs. of
heavy pine timber.

North between Secs. 13 and 18.
Na. 16° 25' E.
From the loc. ascending

between

Ranges 84 and 85 W. of a
 sharp slope.

16.00 Top of mountain's base. E and W.

18.00 Begin descending.

37.00 Base of mountain.

38.20 Begin ascending a big
 mountain.

40.00 A granite stone 16x14x6 set
 11 in. deep, marked "4 on W.
 side, and in a mound of
 stone for "4 Sec. cor.
 No trees of required size
 prominent.

68.00 Top of very high mountain.

72.00 Begin descending mountain.

80.00 A granite stone 18x14x6 set
 12 in. deep, marked 4 notches
 on S edge, and 2 notches on
 N. edge, and in a mound of
 stone for cor. to Secs. 7, 12, 13
 and 18.

~~Between~~ ~~Secs. 13, N.~~
 chains. No trees of required size
 convenient.

Land mountainous and very
 rough, unfit for cultivation.
 Veg: Grass and 80. chs. of
 heavy pine timber.

North bet. Secs. 7 and 12.
 Na. 16° 25' E.

From the corner descend-
 ing.

27.00 Base of Big mountain and
 begins running along an
 Eastern slope.

40.00 A granite stone 18x12x4
 set 12 in. deep, marked "4
 on N. side, and in a mound
 of stone for "4 Sec. cor.
 From which a
 Spruce 3 in. diam. br. E. - 10 lbs. dist.

- intercom
 Ranges 184 / Aug 83 W. 7:45 P.M.
 Channel *Pin. diam.* br. N. 70° W. 12 lks. dist
 44.00 Begin descending w. E. slope.
 50.32 Base of slope.
 50.35 A creek 12 lks. wide, 3 mi. deep
 runs E.
 50.40 Begin ascending S.E. slope.
 53.00 Top: br. E. and W.
 56.00 Descending N. E. slope.
 59.92 A fir *Pin. diam.*
 64.00 Base of slope.
 64.05 Creek 12 lks. wide, 3 mi. deep,
 runs E.
 64.10 Begin ascending S.W. slope.
 73.00 Top br. S.E. and N.W.
 75.00 Begin descending rolling N.
 slope.
 80.00 A granite stone 20x12x8 set
 15 mi. deep, marked 5 notches
 on S. edge, and 1 notch on N.
 edge, in a mound of stone

~~Between Tps. 13. N.~~
Chains and with pits for locs. to
Secs. 1, 6, 7 and 12.

- From which a
Spruce 6 in. diam. brs: N. 40° E. 23' the dist.
- " 4 " " S. 80° E. 18 " "
- " 4 " " S. 45° W. 23 " "

Land mountainous, unfit
for cultivation.

Veget: Grass and 80 chs. of
heavy pine and spruce
timber.

Surveyed Sep. 4 - 1879.

North between Secs. 1 and 6
Na. 16° 25' E.

- 5.00 Base of mountain.
- 8.06 A spruce 18 in. diam.
- 10.00 Begin ascending S.E. slope.
- 22.00 Top of mountain brs. S.W.
and N.E.

between

27 Ranges 84 and 85 W. of a
 chains

- 24.00 Begin descending a N. slope.
- 40.00 A granite stone, 18x12x8 set
 12 in. deep, marked 8¹¹/₄ on N.
 side, and in a mound of stone
 for ¹¹/₄ Sec. Cor.
 From which a
 Spruce 12 in. diam. brs. N. 75° E. 30 lks. dist.
- 51.00 Base of mountain.
- 53.00 A creek 10 lks. wide, 3 in. deep,
 runs E.
- 56.00 Begin ascending S. E. slope.
- 71.00 Top, brs. N. E. and S. W.
- 73.00 Begin descending N. slope.
- 80.00 A granite stone 20x14x8 set
 15 in. deep, marked 6 notches
 on N. S. E. and W. edges; said
 cor. sets in a mound of
 stone 4 ft. base and 3 ft. high
 for cor. to Tps. 13 and 14 N. Rgs.
 84 and 85 W.

226 292 300
Between Tps. 13^{and}
chains from which a
line in Indian. Sec. 8 20° N. 8 lbs. dist
" 10 " " N. 62° W. 22 " "
" 6 " " N. 65° E. 3 " "
Land mountainous^{and} broken
unsuited for cultivation.
Veg.: Grass^{and} 80 chs. of
heavy pine^{and} spruce timber

Surveyed Sep. 5-1879

From the Cor. to Tps. 13
and 14. N. Rgs. 84^{and} 85 W. S
run

East, on a random
line between Tps. 13^{and}
14. N. Rg. 84 W. S set tem-
porary 1/4 Sec. ^{and} Sec. Cor-
ners at every 40^{and} 80 chs.

14 N. Range 84 W. of 6th p.m.
 chains and I find the length of this
 Sp. line to be 5 miles and
 79.76 chs. and the falling to be
 1.38 chs. S. of the cor. to Sp. 1
 13 and 14 N. Rgs. 83 and 84 W.
 The correction for this line
 will therefore be 0.24 chs.
 W. and 23 lks. N. per mile.

From the cor. to Sp. 13 and 14
 N. Rgs. 83 and 84 W.

I run

S $89^{\circ} 58'$ W, on a true line
 between Secs. 6 and 31

Na. $16^{\circ} 25'$ E.

From the cor. descending.

1.27 Base of slope.

1.30 Creek 10 lks. wide, 2 m. deep,
 runs S. 10° W.

Between Sps 13^{and}

- 1.33 Begin ascending steep E. slope.
- 19.00 Top of mountain by N. and S.
- 21.00. Begin descending very steep W. slope.
- 40.00 A granite stone 18x12x9 set 12 mi. deep, marked "4 on N. side" and in a large mound of stone for "4 Sec. cor.
- 44.00 Base of mountain.
- 45.10 Right bank of Grand Encampment river, 12 mi. deep, runs N. 10° W.
- 46.20 Left bank of same.
- 54.00 Leave bottom and strike rolling country.
- 61.00 Begin running up a gulch, runs N. 72° E.

309.

N. R. 84 M. of 6th P. M.

INDEXED

M. G. L.

764

Exteriors by W. C. Downey, contract 103, of
May 12, 1879, Sept. 6, to Sept. 10, 1879

R. 8 E W

<i>Fth Stan.</i>	<i>Par. N.</i>
270	T. 16 N.
263	
256	T. 15 N.
248	
239	T. 14 N.
229	

W. H. Range 84 W. of 6th PM

- 65.00 Creek 2 lks. wide 3 in deep,
runs N. 25° E.
- 67.87 Same creek runs S. E.
- 69.13 Same creek runs W. E.
- 74.00 Leave gulch ^E and thence over
rolling S. slope.
- 80.00 A granite stone 24 x 12 x 10 set
17 in. deep, marked 1 notch on
the E. edge, 5 notches on the
W. edge, and in a mound of
stone for cor. to Secs. 1, 2, 35,
and 36.

Sand rocky and mountainous
unfit for cultivation.
Veg.: Grass and sage brush and
willows

on a true line

S. 89° 58' W. bet. Secs. 2 and 35,
Pa. 16° 20' E.

Thence the corner running

Between Tps 13^{and}
Chains over rolling S slope.

- 3.00 Begin ascending E slope.
- 11.00 Top brs. N^{and} S.
- 11.50 Begin descending
- 18.00 Base ^{and} a creek 2 lks. wide
4 in. deep, runs S E.
- 19.00 Begin ascending N.E. slope.
- 31.00 Top of mountain brs. N^{and} S.
Running thence, over rolling
country.
- 40.00 A granite stone 15x12x4 set
10 in. deep, marked "4" on N.
side ^{and} in a mound of stones
for "4" Sec. cor.
- 44.00 Begin ascending S.E. slope.
- 55.00 Enter timber brs. N^{and} S.
- 56.00 Ascending N.E. slope.
- 80.00 A granite stone 18x12x5 set
11 in. deep, marked 2 notches
on E. edge ^{and} 4 notches on

W. N. Range 54, W. of 6th P. M.
 Charns W. edge, in a mound of
 stone for cor. to Secs. 2, 3,
 34^{and} 35.

No trees of required size
 convenient.

Land rolling^{and} mountainous,
 unfit for cultivation.

veg.: Grass, sage brush^{and}
 25. chs. of heavy pine timber.

on a true line

S. 89° 5' W. bet. Secs. 3^{and} 34.

N. 16° 20' E.

From the cor. ascending a
 N. E. slope of mountain.

5.00 Changes to an E. slope.

13.00 Leave timber.

24.00 Top of mountain bet. 5° E.
^{and} S 3° W.

27.00 Begin descending W. slope.

40.00 A granite stone 20 x 10 x 8

232
299

316.

Between Tps. 13^{and}

Chains sec 14 in. deep, marked 1/4
on N. side, ^{and} in a mound
of stones for 1/4 Sec. Cor.

50.00 Enter timber, brs. N. ^{and} S 15° W.

50.50 Base of slope, ^{and} enter wet
gulch, runs N.

53.00 Leave gulch ^{and} begin ascend-
ing gentle E. slope.

78.00 Leave timber.

78.60 Top of mountain, brs. N ^{and} S.

80.00 A granite stone 18 x 12 x 12
set 12 in. deep, marked 3
notches on E. edge ^{and} 3
notches on W. edge, in a
mound of stones for Cor. to
Secs. 3, 4, 33 ^{and} 34.

Land mountainous, unfit for
cultivation.

Vegetation: Grass ^{and} sage brush
^{and} 41 lbs of heavy pine ^{and}

14. N. Range 54 (W. of 6th p.m.)

Chamaeaspens timber.

⁰ ^{on a true line}
S. 89° 5' W. bet. Secs. 4^{and} 33.
Na. 16° 20' E

- 3.00 Begin descending W. slope
- 8.00 Enter timber, bet. N. W. and S. E.
- 10.40 Base of mountain.
- 10.43 Creek 4 lks. wide, 3 in. deep runs N. W.
- 14.30 Creek 6 lks. wide, 3 in. deep runs N. E.
- 14.50 Begin ascending rocky E. slope.
- 23.00 Apex, or top of conical mountain - Begin descending.
- 27.00 Base of mountain and a ravine runs N.
- 37.00 Begin ascending Eastern slope.
- 40.00 A granite stone 20 x 15 x 10 see

234
301

318.

Between Sps. 13^{and}

- chains 4 in. deep, marked 1/4 on N. side, and in a mound of stone for 1/4 Sec. cor.
- From which an Aspen 7 in. diam, br. S. 3° N. 30 lks. dist.
- 55.00 Begin running along a gentle N. slope.
- 65.00 Begin ascending a very gentle N.E. slope.
- 74.22 A creek 10 lks. wide, 3 in. deep, runs N. 37° E.
- 75.00 Ascending gentle S.E. slope.
- 77.00 Leave timber
- 80.00 A granite stone 24 x 18 x 10, set 16 in. deep, marked 4 notches on the E. and 2 notches on the N. edges, and in a mound of stone for cor. To Secs. 4, 5, 32 and 33
- Sand mountains and rocky.

W. N. Range 84 W. of 6th P. M.
 Chains unfiled for cultivation.
 Veg.: Grass and 69. chs. of
 heavy pine timber.

on a true line
 S. $89^{\circ} 55' N$ bet. Secs. 5 and 32,
 Va. $16^{\circ} 20' E$.

From the cor. ascending a
 gentle S. E. slope.

2.00 Top, brs. N. E. and S. W. running
 thence over top.

4.00 Enter timber, brs N. and S.

8.00 Along gentle N. slope.

19.00 Ascending N. E. slope.

26.00 Along North slope.

40.00 A granite stone $15 \times 10 \times 6$ set
 10 in. deep, marked $\frac{1}{4}$ on N.
 side and in a mound of stone
 for $\frac{1}{4}$ Sec. cor.

From which a
 6 in. diam. brs. N. 6 E. 20 lbs. dist.

236
303

320.

Between Tps. 13^{and}

Chain No. 12, in. diam. brs. S. 5° W. 3 lks. dist.

46.00 Ascending gentle N.E. slope.

61.00 Top of mountain brs. N. W. ^{and}
S. E.

64.00 Begin descending W. slope.

72.20 Base of slope.

72.80 Creek 10 lks. wide, 3 in. deep,
runs N. E.

75.00 Begin ascending S. E. slope.

80.00 A granite stone 18 x 12 x 10
set 12 in. deep, marked 5
notches on E. edge, and 1
notch on W. edge, in a mound
of stone for Cor. to Secs. 5,
6, 31^{and} 32.

From which a

line 12 in. diam. brs. N. 20° E. 14 lks. dist.

" 5 " " " S 8° E 8 " "

" 12 " " " N 40° W 10 " "

Sand mountains, unfit for

W. N. Range 84 W. of 6th P.M.
 Champs cultivation.

veg: Grass and 76. chs. of
 heavy pine timber.

^{on a true line}
 S. 89° 5' W. bet. Secs 6 and 31
 Na. 16° 25' E.

From the cor. ascending
 S E slope.

2.00 Begin ascending broken
 and rocky E. slope.

9.00 Top, hrs. N. and S.

19.00 Begin ascending.

25.00 Top, hrs. N.E. and S.W.

28.00 Begin descending N.W. slope.

40.00 A granite stone 15 x 12 x 6
 set 10 in. deep, marked "4"
 on N. side, and in a mound
 of stone for "4" Sec. Cor.
 From which a
 line 12 in. diam hrs. S 15° W. 14 lbs. dist.

238 305 322.
Bet Sps. 13rd and 14th N. Rgs. 84th W. of 6th pm

- 42.00 Base of mountain
- 42.10 Creek, 9 lks. wide, 3 in. deep,
runs N.
- 43.00 Begin ascending gentle N.E.
slope
- 70.00 Along N. slope.
- 79.76 The cor. to Sps. 13rd and 14th N. Rgs.
84th and 85th W.

Land mountainous, unfit
for cultivation,
veg: Grass, and 79.76 chs. of heavy
pine timber.

Surveyed Sep. 6-1879.

General Description

of
Sp. 13 N. Rg. 84 W.

This Sp. consists entirely of
mountainous country, un-
fit for cultivation.

Bot. Sp. 14. N. Rgs. 84nd and 85th W. of
 Chain's Point 4/5 of the Sp. is cov-
 ered with heavy pine
 timber of a superior qual-
 ity.

From the Cor. to Tps. 13th and
 14 N. Rgs. 84th and 85 W. run-
 ning N. ~~between~~ ⁱⁿ Tps. 14 N.
 between Rgs. 84th and 85 W.

North bet. Secs. 31st and 36.
 Na. 16° 25' E.

From the Cor. descending,
 N. slope of mountain.

- 15.00 Begin ascending S.W. slope.
- 20.00 Along N. slope.
- 25.00 Begin descending N.W. slope.
- 36.00 Begin ascending S.W. slope.
- 40.00 A granite stone 14x12x6

307. ~~Between~~ Sp. 14. N.

Chain 10 mi. deep, marked "4" on W. side and in a mound of stone for "4 Sec. Cor.

From which a Pine 10 mi. diam. bet. W. 12 lbs. dist.

43.50 Begin descending N. W. slope.

62.00 Descending gentle N. slope.

74.00 Leave heavy pine timber.

80.00 A granite stone 18x14x8 set 12 mi. deep, marked 1 notch on S. edge, and 5 notches on N. edge, in a mound of stone and with pits for Cor. to Secs. 25, 30, 31 and 36.

Sand rolling and mountainous, unfit for cultivation.

Veg: Grass, and 74 chs. of heavy pine timber

North bet. Secs. 25 and 30.

between
325. 308 241
Ranges 84 and 85 W. of P.M.
Chams Va. $16^{\circ}20'E$.

From the cor. descending
gentle N. slope.

11.00 Base of slope.

12.00 Begin ascending mountain.

40.00 A granite stone $16 \times 14 \times 8$ sec
10 in. deep, marked $\frac{1}{4}$ on W.
side, and in a mound of stone
for $\frac{1}{4}$ Sec. cor.

53.00 Top of mountain, brs E and W.

56.00 Enter timber brs. E and W.

57.00 Begin descending.

72.80 Base of mountain.

74.05 North Fork of Grand Em-
campment creek, 40 ft.
wide, 10 in. deep, runs E.

75.25 Begin ascending very steep
S. slope.

75.60 Live timber.

80.00 A granite stone $14 \times 12 \times 7$

342
309
326
Between Tpx. 14. N.
Chains set 10 mi. deep, marked 2
notches on the S. edge, 4
notches on the N. edge, in
a mound of stone and with
pits for Cor. to Secs. 19, 24, 25
and 30.

Land mountainous, unfit
for cultivation.

Veg.: Grass and sage brush, and
19.60 chs. of heavy pine
timber.

North bet. Secs. 19 and 24.

Na. $16^{\circ} 25' E$.

From the Cor., ascending.

3.00 Top, bet. E and W,

3.50 Begin descending,

6.00 Enter Timber

9.00 Base of ridge, and begin as-
cending S. slope.

between
327 310 243
Ranges 84 and 85 W. of G. P. M.

11.00 Top of slope, br. N. 70° E, and
S. 70° W. — Begin descend-
ing.

19.00 Base of slope — leave timber.

20.00 Begin ascending.

37.00 Top, br. E and W.

37.50 Begin descending.

40.00 A granite stone $18 \times 12 \times 10$ set
12 in. deep, marked "4" on W.
side, and in a mound of stone
for "4" Sec. cor.

51.00 Base of slope, and thence
over rolling E. slope.

65.33 A creek 4 lbs. wide, 3 in. deep
runs S E.

65.35 Begin ascending S. W. slope.

79.00 Top br. E and W. Thence
over rolling country.

80.00 A granite stone $20 \times 8 \times 12$
set 15 in. deep, marked

~~Between~~ Twp. 14. N.
 Chain 3 notches on S. edge, and 3
 notches on N. edge, in a
 mound of stone for cor. to
 Secs. 13, 18, 19 and 24.

Land rolling and mountainous,
 unfit for cultivation.

Veget: Grass, and 13, chs. of heavy
 pine and aspen timber.

North bet. Secs. 13 and 18,

Na. $16^{\circ}20'E$,

- 2.00 Enter timber bet. N. E. and S. W.
 10.00 Begin ascending gentle S. E.
 slope.
 16.00 Leave timber,
 23.00 Begin running along E. slope
 and enter timber, bet. E. and W.
 37.00 Leave running over E. slope,
 and strike gently undulating
 country.

between
Chains
322
312 445
Ranges 81 and 83 W. G. P. M.

- 40.00 A granite stone 20x10x3
sec 44 mi. deep, marked "4
on W. side, and in a mound
of stone for "4 Sec. cor.
- 40.50 Begin ascending gentle S.
slope.
- 43.00 Leave timber
- 50.00 Top of slope and enter timber,
hrs. E. and W. Thence along
gentle W. slope.
- 73.00 Begin descending N. W. slope.
- 80.00 A granite stone 12x10x6 sec
8 mi. deep, marked "4 notches
on S. edge, and 2 notches on
N. edge, and in a mound of
stone for cor. to Secs. 7, 12,
13 and 18.
- Thence a
line 10 mi. diam, hrs. N. 45° E. 25 lbs. dist.
Sand mountains, unfin.

~~Between Tps. 14 & 15~~
 Champs for cultivation.

veg. grass, and sage brush
 and 61. chs. of heavy pine
 timber.

North bet. Secs. 7 and 12,
 Va. $16^{\circ} 25' E$.

From the cor., descending N.W.
 slope.

- 8.00 Leave timber.
- 16.00 Descending N. slope.
- 40.00 A granite stone $18 \times 10 \times 5$ feet
 12 in. deep, marked $\frac{1}{4}$ on W.
 side and in a mound of stone
 for $\frac{1}{4}$ Sec. cor.
- 75.00 Base of mountain.
- 75.20 South Fork of Cow Creek, 20
 lbs. wide, 2 in. deep, runs
 $N. 70^{\circ} E$.
- 77.00 Begin ascending S.E. slope.

between
Chains
80.00

Ranges 84 and 85 W. of 6. P.M.

A granite stone 24x12x5
set 18 in. deep, marked 5
notches on S. edge, and 1
notch on N. edge, in a
mound of stone for cor. to
Secs. 1, 6, 7 and 12,

Land mountainous, and rolling
unfit for cultivation

veg.: Grass sage brush and
S. chs. of heavy pine timber

North bet. Secs. 1 and 6.

Na. 16° 20' E.

From the cor., ascending S.E.
slope,

20.00 Begin running along rolling
E. slope,

40.00 A quartzite stone 15x12x10
set 10 in. deep, marked "4"
on N. side, and in a mound

248
315, ^{332. between} ~~Sept~~ ^{6th p.m.} ~~14~~ ¹⁴ ~~and~~ ^{and} ~~85~~ ⁸⁵ W. of
chains of stone, with pits for 14
Sec. cor.

64.90 Wood road, brs. W. and N. E.

65.80 Begin descending a N. W.
slope.

79.00 Base of slope.

80.00 A quartz boulder 18x10x10
set 11 in. deep, marked 6
notches on the E, W, N. and S.
sides; in a large mound of
stone for cor. to ~~14~~ ¹⁴ and
15 N. Rgs. 84 and 85 W.

Sand mountains, unfit for
cultivation.

Veget: Grass, and sage brush.

Surveyed Sep. 7th - 1879.

From the cor. to ~~14~~ ¹⁴ and
15 N. Rgs. 84 and 85 W.

Bet. Tps. 14^{and} 15. N. Rq. 84 W. of 6 P.M.
 Chained run

East on a random
 line between Tps. 14^{and} 15
 N. Rq. 84 W. I set temporary
 "4 Sec. and Sec. corners, at
 every 40^{and} 80 chs. and I
 find the length of this Tps.
 line to be 5 miles^{and} 79
 chs. and the fallings to be 72
 lbs. S. of the cor. To Tps. 14
 and 15. N. Rqs. 83^{and} 84 W.

The correction for this line
 will therefore be 1 ch. N.
 and 12 lbs. N. per mile.

From the cor. to Tps. 14^{and}
 15. N. Rqs. 83^{and} 84 W.

I run

S 89° 55' N. on a true
 line between Secs. 1^{and} 36.
 N. 16° 25' E.

319

334.

Between Tps. 14^{and}
 10.00 Leave creek bottom, ^{and}
 enter rolling country.
 40.00 A piece of quartz 10x8x8
 set 6 in. deep, marked '4
 on N. side, in a mound of
 stone ^{and} with pits for '4 Dec.
 Cor.

80.00 A granite stone 14x10x6 set
 10 in. deep, marked 1 notch
 on E. edge, ^{and} 5 notches on W.
 edge, in a mound of stone
^{and} with pits for Cor. to Secs.
 1, 2, 35 ^{and} 36.

Said rolling.

Soil third rate.

Veget: Grass ^{and} sage brush.

on a true line

S. 89° 55' N., bet. Secs. 2 ^{and} 35
 W. 16° 25' E.

40.00 A granite stone 18x15x12

15. N. Range 84 W. of 6th P.M.
 Channeled 12 in. deep, marked
 '4 on N. side, in a mound
 of stone and with pits for
 Sec. Cor.

80.00 A granite stone 15x8x7
 set 10 in. deep, marked 2
 notches on E. edge and 11
 notches on W. edge, in a
 mound of stone and with
 pits for Cor. to Secs. 2, 3,
 34 and 35.

Sand rolling Soil third rate
 Veg.: Grass and sage brush.

on a trawling
 S. 89° 55' W. bet. Secs. 3 and 34,
 N. 16° 25' E.

40.00 A granite stone 18x12x6
 set 12 in. deep, marked '4
 on N. side, in a mound
 of earth and with pits for.

252 336.1
319. Between Tps. 111^{and}
Chains 1/4 Sec. Cor.

80.00 A granite stone 12x12x6 set
8 in. deep, marked 3 notches
on E. edge, and 3 notches on
N. edge, in a mound of stone
and with pits for Cor. to Decs
3, 4, 33 and 34.
Sand rolling.
Soil third rate
Veg.: Grass, and sage brush.

on a true line
S. 89° 55' N. bet. Decs. 4^{and} 33,
N. 16° 20' E.

40.00 A granite stone 12x10x5 set
8 in. deep, marked 1/4 on N.
side, in a mound of stone
and with pits for 1/4 Sec. Cor.
59.00 Enter creek bottom bet. E.
and S. W.

80.00 A quartz boulder 18x15x7

15. N. Range 84 W

Chain set 12 mi. deep, marked 4 notches on E. edge and 2 notches on W. edge, in a mound of stone for Cor. to Secs. 4, 5, 32 and 33.

Land rolling,
Soil 3^d rate.

Veg: Grass, and sage brush.

on a true line

S. 89° 53' W. bet. Secs. 5 and 32,
N. 16° 20' E.

0.53 South fork of low creek,
20 lks. wide, 3 mi. deep,
runs N. 28° E.

2.00 Begin ascending S.E. slope
of a bluff.

25.00 Top of bluff, hrs. N.E. and S.
W. Hence over rolling coun-
try.

40.00 A granite stone 18x12x5

254
321

338.

Between Tps. 14^{and}
Chains set 12 in deep, marked $\frac{1}{4}$
on N. side in a mound
of stone ^{and} with pits for
14 Sec. cor.

80.00 A granite stone 18x15x8 set
12 in. deep, marked 5 notches
on E. edge, ^{and} 1 notch on W.
edge, ^{and} in a mound of
stone with pits for cor.
to Secs. 5, 6, 31 ^{and} 32,
Sand rolling.

Soil third rate.

Vegetation: Grass ^{and} sage brush.

on a true line

S. $89^{\circ}53'N$. bet. Secs. 6 ^{and} 31

N. $16^{\circ}20'E$.

40.00 A granite stone 18x8x8 set
12 in. deep, marked $\frac{1}{4}$ on
^{N.} side in a mound of
stone ^{and} with pits for $\frac{1}{4}$

15. N. Range 84th W.

Cham. Sec. Cor.

62.10 Wood road: br. N. 52° E. and
S. 52° W.

70.00 Begin descending N. W. slope.

75.30 Base of slope.

79.00 The cor. to Tps. 14th and 15th N.

Rgs. 84th and 85th W.

Land rolling

Soil third rate.

Veget: Grass, and sage brush.

Surveyed Sep. 7th 1879.

General Description

Tp. 14th N. Rg. 84th W.

The character of the country embraced within this Tp. is mountainous and unfit for cultivation, excepting the northern

256
323

340.

~~Between Tps. 15. N.~~

Chambers of Section's, which is rolling country, fit for cultivation. The soil being about 3^d rate. About 1/5 of the Tps. is covered with heavy pine and aspen timber. The timbered land is situate in the South Western portion of the Tps.

From the Cor. to Tps. 14 and 15 N. Rgs. 84 and 85 W. running N. ^{between} ~~between~~ ⁱⁿ Tps. 15. N. Rgs. 84 and 85 W.

North bet. Secs. 31 and 36. N. 16° 25' E.

0.10 A fork of Cow Creek 12 ft. wide, 6 in. deep, runs N. 40° E.

between
341. 324 257
Ranges 84 and 85 N. of 6, P.M.
13.27 A wood road, brs. N. E. and
S. W.

37.80 N. Fork of Cow Creek, 8 lks.,
wide, 6 mi. deep, runs E.

38.20 Begin ascending S. slope of
a mountain.

40.00 A granite stone 20x10x6
sec 15 mi. deep, marked 1/4
on W. side, and in a mound
of stone for 1/4 Sec. cor.

59.00 Top of mountain brs E and
W.

59.50 Begin descending rocky N.
slope.

70.00 A granite stone 18x12x5
sec 12 mi. deep, marked 1
notch on S edge, and 5
notches on N. edge, in a
mound of earth and with
pits for cor. to Secs. 25, 30.

258
325
342.
~~Between Tps 15 N.~~
Chams 31^{and} 36.

Land rolling ^{and} mountainous,
unfit for cultivation.
Veg.: Grass ^{and} Sage brush

North bet. Secs. 25^{and} 30.

Na. $16^{\circ} 20' E$.

From the cor. descending
gentle N. slope.

4.00 Base of slope.

40.00 A granite stone $12 \times 12 \times 10$
set 8 mi. deep, marked "4" on
N. side, ^{and} in a mound of
stone for "4" Sec. cor.

80.00 A granite stone $24 \times 15 \times 3$
set 16 mi. deep, marked 2
notches on S. edge, ^{and} 4
notches on N. edge, in a
mound of stone for cor. to
Secs. 19, 24, 25^{and} 30.

between

343. 326 6th p. m. 259

Ranges 84 and 83 W. of a
Chain Land rolling,
Soil mud rate,
Veg: Grass and sage brush

North bet. Secs. 19 and 21.
Na. $16^{\circ} 20' E$.

- 40.00 A granite stone $12 \times 10 \times 8$
set 8 in. deep, marked "14
on the N. side, in a mound
of earth and with pits for "4
Sec. cor.
- 48.70 Temporary road bet. N.E. and
S.W.
- 68.55 Calf ~~cr~~ creek, 12 lks. wide 5 m.
deep, runs N. $40^{\circ} E$.
- 80.00 A granite stone $20 \times 20 \times 10$
set 15 in. deep, marked 3
notches on N. edge, and 3
notches on S. edge, in a
mound of stone and with

260. 344. 1
327. ~~Between~~ Sp. 15 N.

Chain pits for Cor. to Secs. 13, 18,
19^{and} 24.

Sand rolling.

Soil 3^d rate.

Vegetation: Grass, ^{and} willows

North between Secs. 13^{and} 18.
No. 16° 25' E.

40.00 A piece of quartzite 10 x 10 x 8.
set 6 in. deep, marked "4" on
the N. side, in a mound of
earth ^{and} with pits for "4"
Sec. Cor.

80.00 A piece of quartzite 14 x 8 x 5
set 9 in. deep, marked 4
notches on the S. edge ^{and}
2 notches on the N. edge,
in a mound of stone ^{and}
with pits for Cor. to Secs.
7, 12, 13^{and} 18.

between

Ranges 84 and 85 W. of

Chains Land rolling

Soil Third rate.

Veg: Grass, and sage brush.

North between Secs. 7 and 12.

No. 16° 22' E.

40.00 A piece of quartzite 10x8x6
set 6 in. deep, marked "4"
on W. side, in a mound
of earth and with pits for "4"
Sec. Cor.

80.00 A quartz stone 10x8x8 set 6
in. deep, marked 5 notches
on the S. edge, 1 notch on
the N. edge, in a mound
of earth and with pits for
Cor. to Secs. 1, 6, 7 and 12.

Land rolling

Soil Third rate.

Veg: Grass and sage brush.

262
329
346
between
of 6th. P. No.
Set. Sps. 15. N. Rgs. 84 & 83 W.
chains

North bet. Secs. 1^{and} 6.

No. 16° 20' E.

11.68 Cherokee road. bet. S.E. ^{and}
N.W.

40.00 A quartz stone 12x10x10 set
7 in. deep, marked "4" on the
W. side, in a mound of stone
^{and} with pits for "4 Sec. Cor.

47.72 Road bet. N.E. ^{and} S.W.

73.95 Road bet. N. 30° E. ^{and} S. 30° W.

74.00 Enter creek bottom ^{and} ir-
rigable land bet. S.W. ^{and} N.E.

80.00 A granite boulder 24x10x10
set 15 in. deep, marked 6
notches on the N. S. E. ^{and}
W. sides; said cor. sets
in a large mound of boul-
ders ^{and} with pits, for cor.
to Sps. 15 ^{and} 16. N. Rgs. 84

Pat. Tps 15^{and} 16. N. Rgs 84^{and} 85 W.
Chains 85 W.

Land rolling;
Soil hard, etc.
Veg: Grass and sage brush.
Surveyed Sep. 9-1879.

From the cor. to Tps. 15^{and}
16. N. Rgs 84^{and} 85 W.
I run

East on a random
line between Tps. 15^{and} 16. N.
Rg. 84 W. I set temporary
1/4 Sec. and Sec. corners at
every 40^{and} 80 chains, and I
find the length of this Tps.
line to be 6 miles^{and} 10 lks.
and the falling to be 265 chs.
S. of the cor. to Tps. 15^{and} 16
N. Rgs 83^{and} 84 W.

264
331

348.

Between Sps. 15^{and}

chains The correction for this line will therefore be 10 lks. E. and 44⁶ lks. N. per mile.

From the cor. to Sps. 15^{and} 16. N. Rgs. 83^{and} 84 W.

I run

S 89° 41' W. on a true line between Secs 1^{and} 36. Va. 16° 25' E.

32.00 Enter creek bottom, or irrigable land, bcs. N. E^{and} S. W.

40.00 A granite boulder 20 x 16 x 8 set 14 in. deep, marked 1/4 on N. side, in a mound of stones^{and} with pits for 1/4 Sec. cor.

42.90 Low creek, 16 lks. wide 3 m. deep, runs N. 50° E.

44.00 Leave bottom^{and} irrigable land, ^{and} strike high rolling

16. N. Range 74. W. of 6th P.M.

Chains, counted

80.00 A lime stone 36x10x8 set 20
in deep, marked 1 notch on
the E. edge, and 5 notches on
the W. edge, in a mound
of earth and with pits for
Cor. to Secs. 1, 2, 35 and 36,
Land rolling.

Soil third-rate.

Veget: Grass and sage brush.

on a true line

S. 89° 41' W. bet. Secs. 2 and 35

No. 16° 22' E.

31.00 Road to Fort Steele, bet. N.W.
and S.E.

40.00 Granite stone 10x8x7 set 6 in
deep, marked 1/4 on N. side
in a mound of stone and
with pits for 1/4 Sec. Cor.

80.00 A granite stone 18x12x8

266
333

350

Between Tps 15^{and}
Cham set 12 in. deep, marked
2 notches on E. edge, and
4 notches on W. edge, in
a mound of earth and
with pits for cor. to Secs
2, 3, 34^{and} 35.

Sand rolling.

Soil 3^d rate

Veg.: Grass and sage brush.

on a true line

S. 89° 41' W. bet. Secs. 3^{and} 34.

Na. 16° 25' E.

40.00 A lime stone 12 x 8 x 7 set
8 in. deep, marked 1/4 on N.
side, in a mound of earth
and with pits for 1/4 Sec.
Cor.

80.00 A lime stone 20 x 14 x 10
set 14 in. deep, marked
3 notches on E. and 3 notches

W. Range 84 W. of 6th P.M.

Champion H. edges in a mound
of earth and with pits for cor.
to Secs. 3, 4, 33 and 34.

Land rolling.

Soil Mud rate.

Veg.: Grass and sage brush.

on a true line

S. $89^{\circ}41'N$ bet. Secs. 4 and 33.

Na. $16^{\circ}20'E$.

40.00 A lime stone $16 \times 14 \times 3$ set
10 in. deep, marked "4" on
N. side, in a mound of
earth and with pits for "4"
Sec. cor.

80.00 A lime stone $16 \times 10 \times 4$ set
10 in. deep, marked 4 notches
on the E. edge, and 2 notches
on the W. edge, in a mound
of earth and with pits for
cor. to Secs. 4, 5, 32 and 33.

268
335

352.

Between Tps. 15th and
Chains Land rolling.

Soil third rate.

Veg: Grass and sage brush.

^{on a true line}
S. 89° 41' W. bet. Secs. 5th and 32nd
No. 16° 20' E.

40.00 A lime stone 16 x 14 x 4 set
10 mi. deep, marked "4 on
N. side in a mound of
earth and with pits for
"4 Sec. cor.

80.00 A lime stone, 36 x 24 x 6
set 20 mi. deep, marked
5 notches on the E. edge,
and 1 notch on the W edge,
in a large mound of stone
and with pits for cor. to Secs.
5, 6, 31st and 32nd.
Land rolling.
Soil third rate.

16. N. Range 84 W. of 6th P.M.
 Chams Veg.: Grass and sage brush.

on a true line

S. $89^{\circ}41'W$ bet. Secs. 6 and 31.

No. $16^{\circ}20'E$.

40.00 A lime stone $18 \times 12 \times 3$ set 12
 in. deep, marked "4 on the
 N. side and in a mound of
 earth and with pits for "4
 Sec. cor.

62.90 A road: brs. N. and S.

66.00 Enter irrigable land

75.20 Road bis. N. $30^{\circ}E$ and S $30^{\circ}W$.

80.10 The cor. to Tps. 15 and 16 N

Rgs. 84 and 85 W.

Land rolling.

Soil third rate.

Veg: Grass and sage brush.

General Description
 of

270
337

354.1

~~Between~~ Tps. 16 N.

Chains Tps. 15 N. Rgs. 84 W.

This T^h. consists entirely of rolling country, and is above the average of lands in this section of country. The soil is 3^d rate and the Veg. is grass, willows and sage brush.

From the Cor. to Tps. 15th and 16 N. ranges 84th and 85 W. running N. between ⁱⁿ Tps. 16 N.

between Rgs 84th and 85 W.

North between Secs. 31st and 36
N. 16° 25' E.

1.10 Creek 10 lks. wide 2 mi. deep, runs N. 25° E.

5.02 Wagner's house is 4.10 chs.

between

355.

338-271

Ranges 84 and 85 W. 4th P.M.
Chains E. of this point.

19.75 South Spring Creek 20 lks.
wide, 3 in. deep, runs N. 40° E.

24.90 Same creek, runs N. W.

26.40 Same creek, runs N. E.

40.00 A granite stone 15 x 18 x 6
set 10 in. deep, marked S 1/4
on W. side, in a mound
of earth and with pits for
S 1/4 Sec. cor.

61.00 Leave irrigable land.

80.00 A quartz boulder, 15 x 12 x 8
set 10 in. deep, marked 1
notch on the S. edge, and 5
notches on the N. edge, in
a mound of stone for cor.
to Secs. 25, 30, 31 and 36.

Sand: S 1/4 level; N 1/4 undu-
lating.

Soil third rate.

272

356.

339

~~Between Tpx. 16. N~~

Chains Veg: Grass and sage brush.

North between Secs 25th & 30.
Pa. 16° 20' E.

40.00 A lime stone 12 x 8 x 7 set
8 in. deep, marked 14 on
the N. side, in a mound
of stone with pits for
14 Sec. Cor.

80.00 A granite stone 22 x 14 x 6
set 16 in. deep, marked 2
notches on the S. edge, and
4 notches on the N. edge,
in a mound of stone
with pits for cor. to Secs.
19, 24, 25th and 30.

Sand yellow,
Soil thin rate.
Veg: Grass and sage brush.

between
357.340 ^{tho} P. No. 273
Ranges 84 and 85 W. of
Chains North bet. Secs. 19 and 24.
Na. $16^{\circ} 25' E.$

9.50 Dry creek-bed, runs N.E.
40.00 A granite stone $20 \times 8 \times 6$ set
13 in. deep, marked "4" on the
W. side, in a mound of earth
and with pits for "4" Sec.
Cor.

80.00 A quartzite stone $12 \times 7 \times 7$
set 8 in. deep, marked 3
notches on the S. edge, and 3
notches on the N. edge, in
a mound of stone and with
pits for Cor. to Secs 13, 18,
19 and 24.

Sand rolling.

Soil third rate.

Veg: Grass, and sage brush.

North between Secs 13 and 18.

274
341

~~Between Tps. 16. N.~~
Chains Va. $16^{\circ}20'E$.

40.00 A piece of white quartz
 $15 \times 12 \times 7$ set 10 in. deep -
too hard to mark - in a
mound of earth and with
pits for "4 Sec. Cor.

80.00 A piece of quartz $26 \times 14 \times 3$
set 16 in. deep, marked 4
notches on the S. and 2
notches on the N. sides, in
a mound of earth and with
pits for Cor. to Secs. 7, 12,
13 and 18.

Sand rolling.

Soil 3^d rate.

Veg.: Grass and sage brush.

North between Secs. 7 and 12
Va. $16^{\circ}20'E$.

Running over rolling

between 359. 342 ^{the P.M.} 275
Ranges 84 and 85 W. of
Chambers country.

40.00 A granite stone 16x14x7
set 10 in. deep, marked 114
on the W. side, and in a
mound of earth and with
pits for 114 Sec. cor.

78.00 Enter irrigable land.

80.00 A lime stone 18x16x10 set 12
in. deep, marked 5 notches
on the S. edge, and one
notch on the N. edge, in
a mound of stone and
with pits for cor. to Secs.
1, 6, 7, and 12.

Sand rolling.

Soil 3^d rate.

Vegetation: Grass, and sage brush.

North between Secs. 1 and 6
Na. 16° 20' E,

276
 343
 360.

Between Tps. 16. N.
 10.13 North Spring creek, 14 lks
 wide, 6 mi. deep, runs N.
 72° E.

13.00 Leave irrigable land.

40.00 A lime stone 14x8x7 set
 10 mi. deep, marked "4
 on the W. side, in a
 mound of earth and with
 pits for "4 Sec. cor.

105.44 Intersect the 4th Standard
 parallel ^{N.} at a point ^{12.88}
 chs. ^{N.} of the ^{1/4 section} Standard Cor.
 to Tps. 17 N., Rgs. 84 ~~85~~ ⁸⁴ W.
 at which point I set a
 Lime stone 18x12x6 set
 12 mi. deep, marked 6
 notches on the S, E and W.
 also 6 C. on the N. sides,
 for ^{closing} cor. to Tps. 16 N., Rgs.
 84 and 85 W.

S. of Sec. 31,

between

361.

344

277

Rgs 84 and 85 W. of 6th P.M.

Chains Land rolling.

Soil Third-rate.

Veg: Grass and sage brush.

Surveyed Sep. 10-1879.

In R. 84 W. The 4th Stan. Par. N. deflects N. 43 lbs. per mile, & has 68 lbs. per mile, excess of measurement.

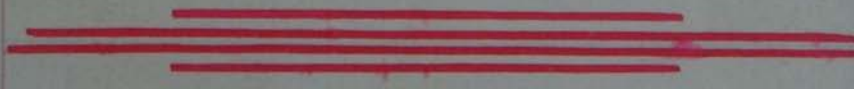
General Description

Tp. 16 N. Rg. 84 W.

The country embraced within this Township is above the average of land in this section of country and consists of rolling and undulating land.

Soil Third rate.

Veg: Grass, willows and sage brush.



I hereby certify that in
the foregoing Field Notes,
whenever pits have been
omitted, ~~that~~ it was by
reason of the very uncon-
tainous ^{and} stony nature
of the country, ^{and} further-
more, that wherever
such omissions occurred,
I have in every case
substituted a substan-
tial mound of stone,
to perpetuate said cov-
ners.

William O. Downey
U.S. Deputy Surveyor

We hereby certify that we assisted Wm. C. Downey, U.S. Deputy Surveyor, in surveying the exterior lines of Townships 12 to 16 N. inclusive, ranges 81 to 84 W. inclusive, all North of the base line 2^d West of the 6th Principal Meridian, in Wyoming Territory, and that said Exterior Lines have been in all respects, to the best of our knowledge and belief, well and faithfully surveyed, and the boundary monuments planted according to instructions furnished by the Surveyor General.

Charles M. Corthy Chairman
 Charles A. Fay ^{Fay} Chairman
 Thomas Hale Axeman

Wm O. Owens, Esq. & Lagman.

Sworn to and subscribed before me this 10th day of October, A.D. 1879

J. J. Symons,
Notary Public

I, Wm. O. Owens, Deputy Surveyor, do solemnly swear that in pursuance of a contract with Edward C. David, Surveyor General of the public lands of the United States, in the Territory of Wyoming, bearing date the 12th day of May A.D. 1879, I have well, faithfully

and truly, in my own proper person, and in strict conformity with the instructions furnished by the Surveyor General, the Printed Manual of Surveying instructions and the laws of the United States, surveyed the Exterior lines of Townships 12, to 16 N. inclusive, Ranges 81, to 84 W. inclusive, all North of the base line and West of the 6th Principal Meridian, in Wyoming Territory, and I do further solemnly swear that all the corners of said survey have been established and perpetuated in strict accordance with the Surveying Manual and printed instructions, and in the specific manner described in the Field Notes and that the foregoing are the true and original

Field Notes of such survey
 William O Downey
 U.S. Deputy Surveyor

Subscribed and sworn to before me this 17th day of November, A.D. 1879

J. H. [Signature]
 Secretary of Public

Surveyor General's Office

Cheyenne, Wyo. Nov. 26th 1879

The foregoing field notes of the survey of the exterior lines of T. 12, 13, 14, 15 & 16 N. R. 81, 82, 83, & 84 W. of 6th P.M. Mer. Wyo. Ter. executed by W^m. O. Downey, under his contract of the 12th day of May, 1879, in the months of August & Sept. 1879, having been critically examined, and the necessary corrections, &

explanations made, the said field notes,
the surveys they describe, are hereby approved.

Edw. C. David
Surveyor General

