

## T. 16 N., R. 86 W., Sixth Principal Meridian, Wyoming, Field Note Links

Plat Accession Number(s)	Year(s) of Survey	
		Township Subdivision Plats
8776	2018-19	<a href="https://www.wy.blm.gov/cadastral/countyplats/carbon/fieldnotes/t16nr86w_gp989fn.pdf">https://www.wy.blm.gov/cadastral/countyplats/carbon/fieldnotes/t16nr86w_gp989fn.pdf</a>
8517	1997-98	<a href="https://www.wy.blm.gov/cadastral/countyplats/carbon/fieldnotes/t16nr86w_gp626fn.pdf">https://www.wy.blm.gov/cadastral/countyplats/carbon/fieldnotes/t16nr86w_gp626fn.pdf</a>
-	1960	<a href="https://www.wy.blm.gov/cadastral/countyplats/carbon/fieldnotes/t16nr86w_gp262fn.pdf">https://www.wy.blm.gov/cadastral/countyplats/carbon/fieldnotes/t16nr86w_gp262fn.pdf</a>
4719	1898	<a href="https://www.wy.blm.gov/cadastral/countyplats/carbon/fieldnotes/t16nr86w_c266Afn.pdf">https://www.wy.blm.gov/cadastral/countyplats/carbon/fieldnotes/t16nr86w_c266Afn.pdf</a>
		Township Exterior Plats
4712	1897	<a href="https://www.wy.blm.gov/cadastral/countyplats/carbon/fieldnotes/ext2788.pdf">https://www.wy.blm.gov/cadastral/countyplats/carbon/fieldnotes/ext2788.pdf</a>

TOWNSHIP 16 NORTH, RANGE 86 WEST, OF THE SIXTH PRINCIPAL MERIDIAN, WYOMING.

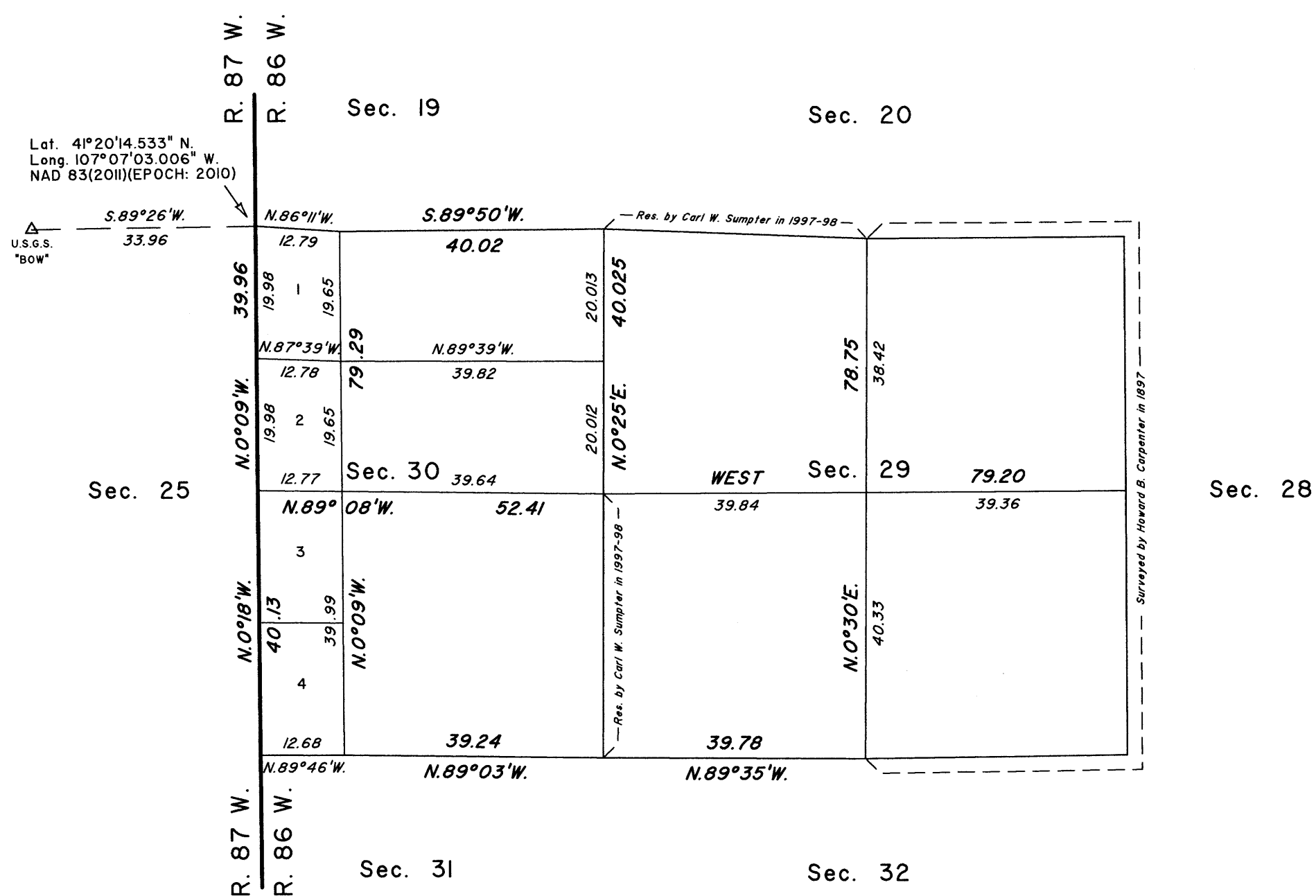
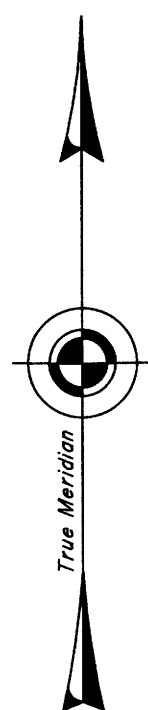
DEPENDENT RESURVEY AND SURVEY

A history of surveys is contained in the field notes.

This plat represents the dependent resurvey of a portion of the west boundary and a portion of the subdivisional lines, designed to restore the corners in their true original locations according to the best available evidence, and the survey of the subdivision of sections 29 and 30, T. 16 N., R. 86 W., Sixth Principal Meridian, Wyoming.

The lotting and areas are as shown on the plat approved June 20, 1899.

Survey executed by David C. Lee, Cadastral Surveyor, beginning May 23, 2018, and completed May, 13, 2019, pursuant to special instructions and assignment instructions dated May 3, 2018, for Group No. 989, Wyoming.



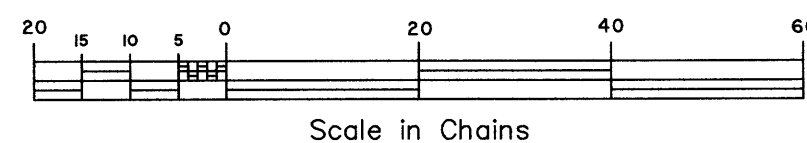
UNITED STATES DEPARTMENT OF THE INTERIOR  
BUREAU OF LAND MANAGEMENT

Cheyenne, Wyoming March 25, 2020

This plat is strictly conformable to the approved field notes, and the survey, having been correctly executed in accordance with the requirements of law and the regulations of this Bureau, is hereby accepted.

For the Director

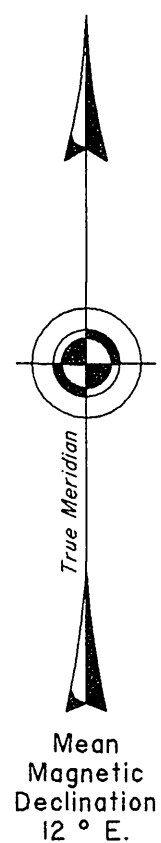
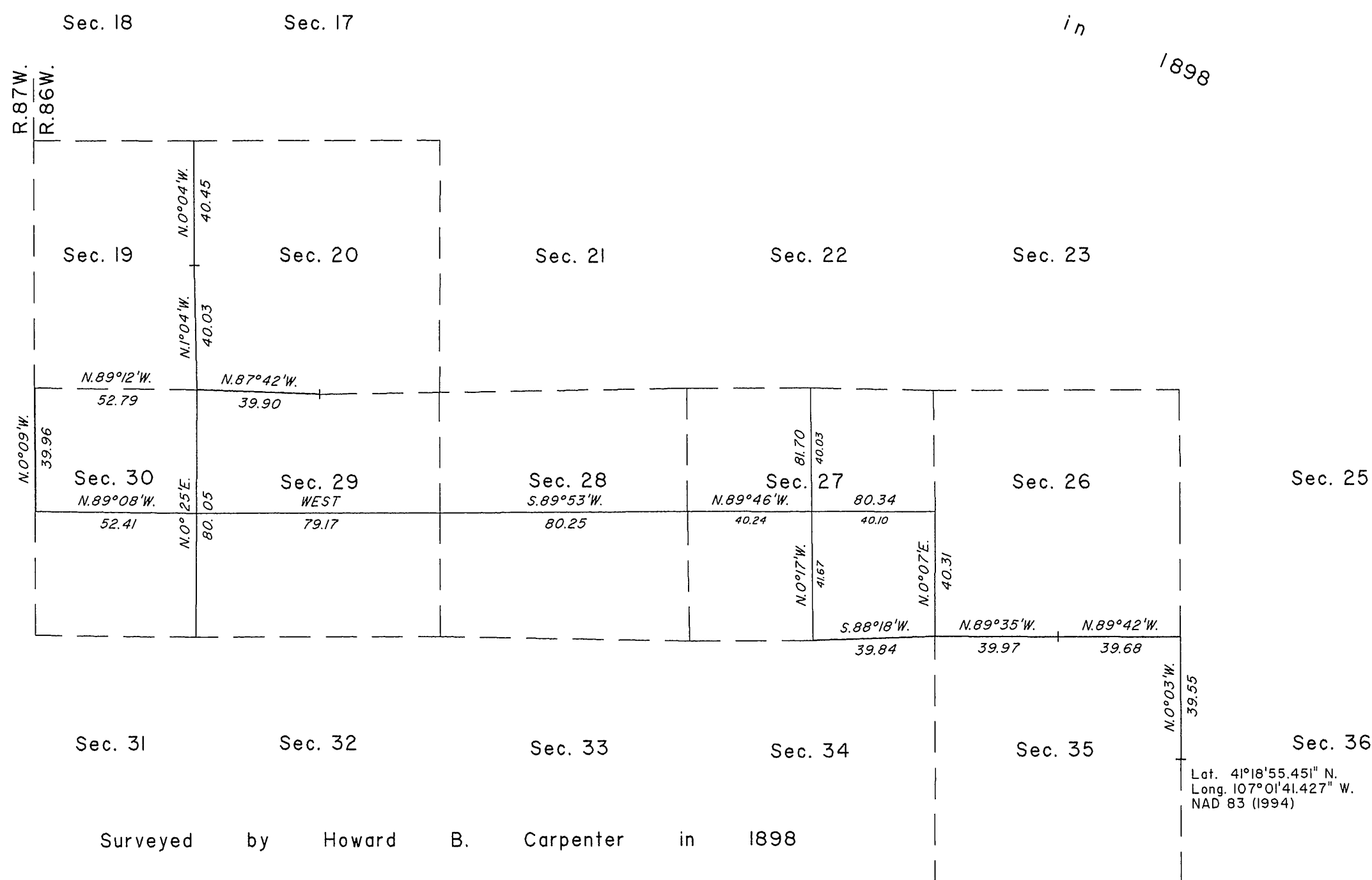
Sonja S. Sparks  
Chief Cadastral Surveyor for Wyoming



# TOWNSHIP 16 NORTH, RANGE 86 WEST, OF THE SIXTH PRINCIPAL MERIDIAN, WYOMING.

## DEPENDENT RESURVEY AND SUBDIVISION OF SECTIONS

Surveyed by Howard B. Carpenter in 1898



A history of surveys is contained in the field notes.

This plat represents the dependent resurvey of portions of the west boundary and subdivisional lines designed to restore the corners in their true original locations according to the best available evidence, and the survey of the subdivision of certain sections, T. 16 N., R. 86 W., Sixth Principal Meridian, Wyoming.

Except as indicated hereon, the lottings and areas are as shown on the plat approved June 20, 1899.

Survey executed by Carl W. Sumpter, Supervisory Cadastral Surveyor (USFS), beginning July 9, 1997, and completed July 9, 1998, pursuant to Special Instructions dated July 9, 1996, for Group No. 626, Wyoming.

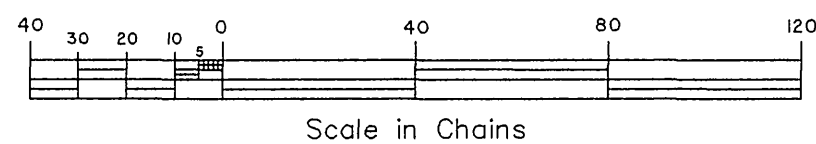
UNITED STATES DEPARTMENT OF THE INTERIOR  
BUREAU OF LAND MANAGEMENT

Cheyenne, Wyoming      October 9, 2009

This plat is strictly conformable to the approved field notes, and the survey, having been correctly executed in accordance with the requirements of law and the regulations of this Bureau, is hereby accepted.

For the Director

John P. Lee  
Chief Cadastral Surveyor for Wyoming

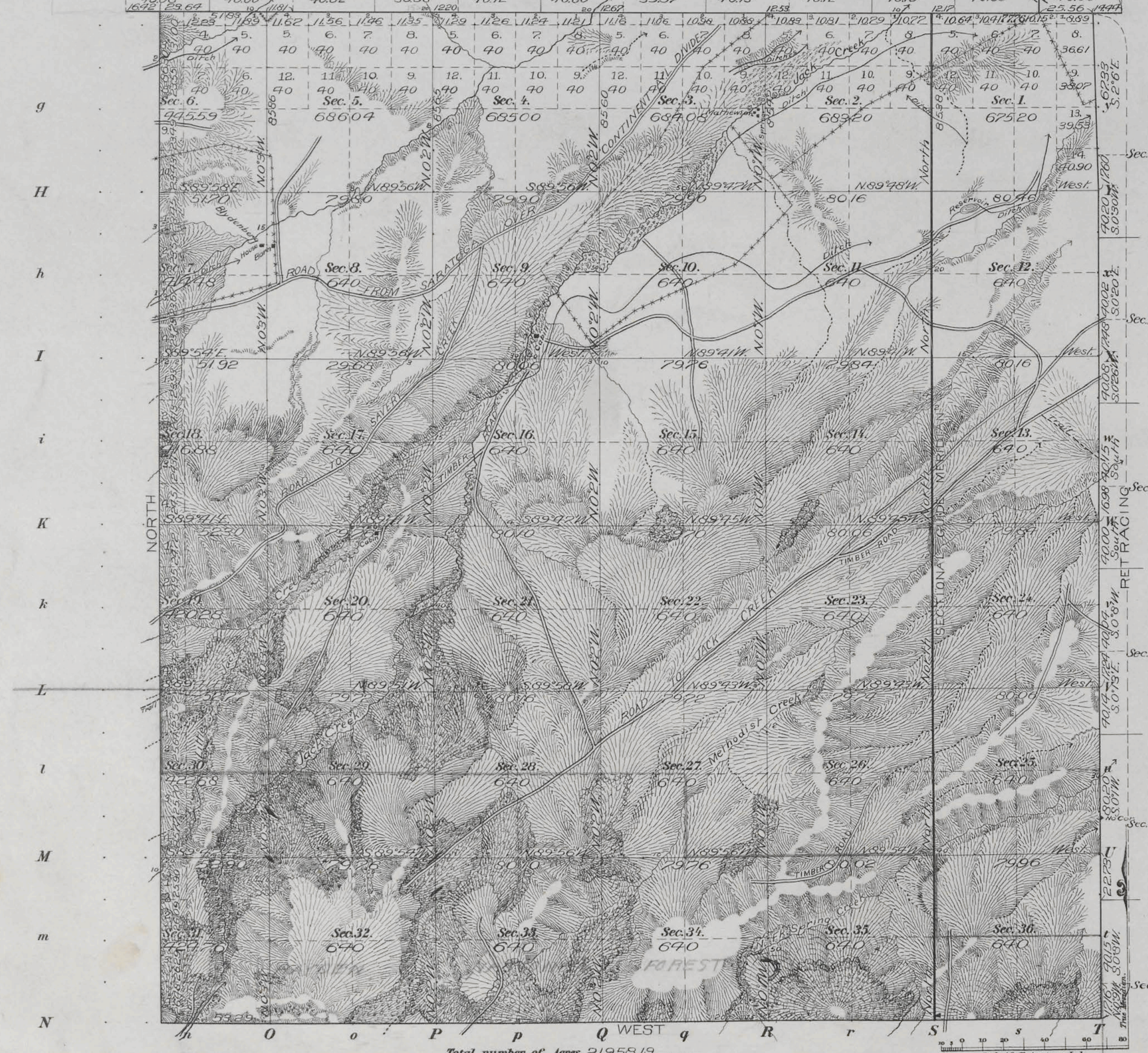




4719

### Township N<sup>o</sup> 16 North, Range N<sup>o</sup> 86 West of the 6<sup>th</sup> Principal Meridian

FOURTH STANDARD PARALLEL NORTH



Posts	Courses	Ch. Lk.²	Posts	Courses	Ch. Lk.²	Posts	Courses	Ch. Lk.²

Latitude 41° 19' N  
Longitude 102° 00' W  
Mean Mag. Decl. 15° 06' E

Total number of Acres 21958.19

Surveys Designated	By Whom Surveyed	Date of Contract	Amount of Surveys Ch.²	When Surveyed
South and West Township lines	Howard B. Carpenter	266 June 30, 1892	11 59 59	Aug. 12-15, 1898.
Subdivisions	"	"	58 47 68	Apr. 22-May 9, 1898
Connections of fractional N. and E. Bars.	"	"	1 73 41	"
N. Boundary E. "	N. F. Cook M. N. Grant	6. Aug. 30, 1870 115. Oct. 23, 1880.	6 00 00 6 26 35	Nov. 26, 1870. March 7, 1881.

The above Map of Township N<sup>o</sup> 16 North of Range N<sup>o</sup> 86 West of the 6<sup>th</sup> Principal Meridian, Wyoming, is strictly conformable to the field notes of the survey thereof on file in this Office, which have been examined and approved.

Surveyor General's Office, *Alphus R. Hanzon*  
Cheyenne, Wyoming, June 23, 1899. *Sur. Gen.*

Filed MAR 13 1900  
Comm. letter Wash. 10-1900

2795

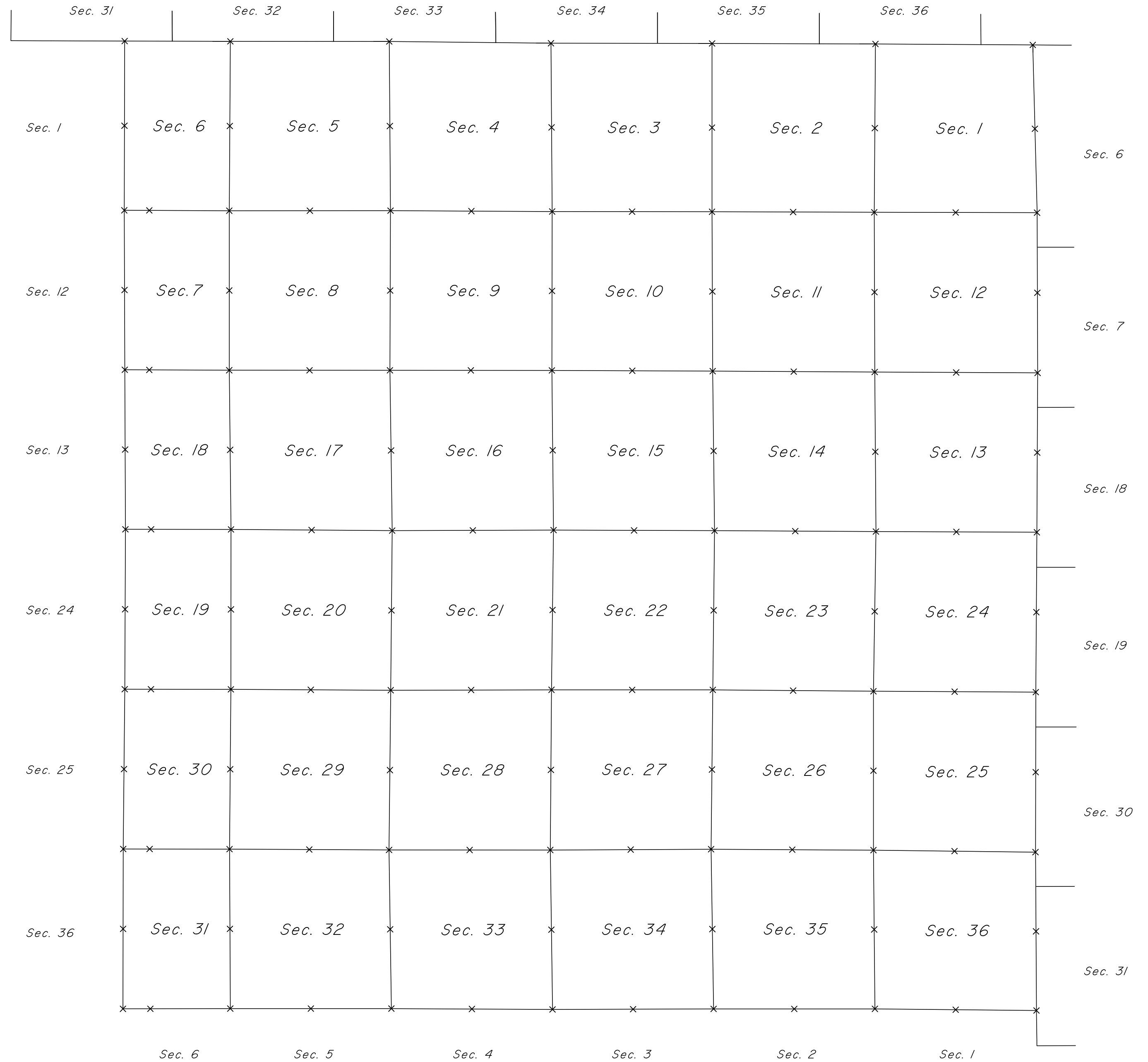
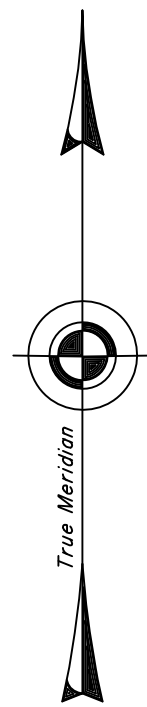
F.H.A. Typog. Lettering.  
IBM Computer.



TOWNSHIP 16 NORTH, RANGE 86 WEST OF THE SIXTH PRINCIPAL MERIDIAN, WYOMING.

INDEX TO CORNER REMONUMENTATION WITHOUT SURVEY

FORTH STANDARD PARALLEL NORTH



NOT TO SCALE

LEGEND

Remonumented Corner as Indicated



Indicates

4712

Table of Mileage of Resurveys

Lines Designated	Amount	When Surveyed
South Bdry of Wyoming	4 71 10	August 22, 1898
Standard Lines	5 72 46	June 24-25, "
Connecting lines	2 63	" "
Township lines	37 53 67	Oct. 11, 1897-Aug. 13, 1898
Connecting lines	37 37	June 23 - "

Table of Mileage

Lines Designated	Amount	When Surveyed
Township lines	41 18 29	July 21, 1897-July 2, 1898
Connecting "	1 5 98	" "



THIS PLAT  
of the  
SURVEY  
of the  
S and W Boundaries of T. 14 N., R. 85 W.;  
S. " W. " " T. 15 N., R. 86 W.;  
S. " W. " " T. 16 N., R. 86 W.;  
and the  
S. Boundary of T. 16 N., R. 87 W.;  
THE RESURVEY  
of the  
South Boundary of Wyoming, from the  
150 M. to the 155 M. Post;  
W and N. Boundaries of T. 12 N., R. 85 W.;  
E, N. " W. " " T. 13 N., R. 84 W.;  
W. Boundary of T. 16 N., R. 87 W. and a  
part of the E. and W. Bdr's. of T. 14 N., R. 84 W.,  
N. Bdry T. 14 N., R. 85 W. and W. Bdry, of  
T. 13 N., R. 85 W.

THE RETRACING  
of the  
E. Boundary of T. 12 N., R. 85 W.;  
S and W Boundaries of T. 14 N., R. 86 W.;  
E. Boundary of T. 15 N., R. 86 W.;  
S and W Boundaries of T. 15 N., R. 87 W.;  
E. Boundary of T. 16 N., R. 86 W.  
and a part of the  
S. Boundary of T. 13 N., R. 84 W.;  
W. " " T. 13 N., R. 85 W.;  
E. " " T. 14 N., R. 84 W.;  
E. and N. Boundaries of T. 14 N., R. 85 W.  
and the  
Fourth Standard Parallel North,  
through Ranges 86 and 87 West of the  
Sixth Principal Meridian  
WYOMING  
is strictly conformable to the field notes  
of the Survey, Resurvey or Retracing  
thereof by  
Howard B. Carpenter, U.S. Dep. Surv.,  
under his  
Contract No 266A,  
dated June 30, 1897,  
which have been examined, approved  
and filed in this office,  
U.S. Surv. Gen's. Office,  
Cheyenne, Wyo.,  
June 20, 1899.

*Alpheus P. Homan*  
U.S. Surv'r. Gen'l.

Latitude 41°03'N.  
Longitude 106°46'W.  
Mean Mag. Decl. 15°03'E.

Scale: 1 inch to 160 chains

Filed MAR 13 1900  
Comm. letter Meh. 10-1900