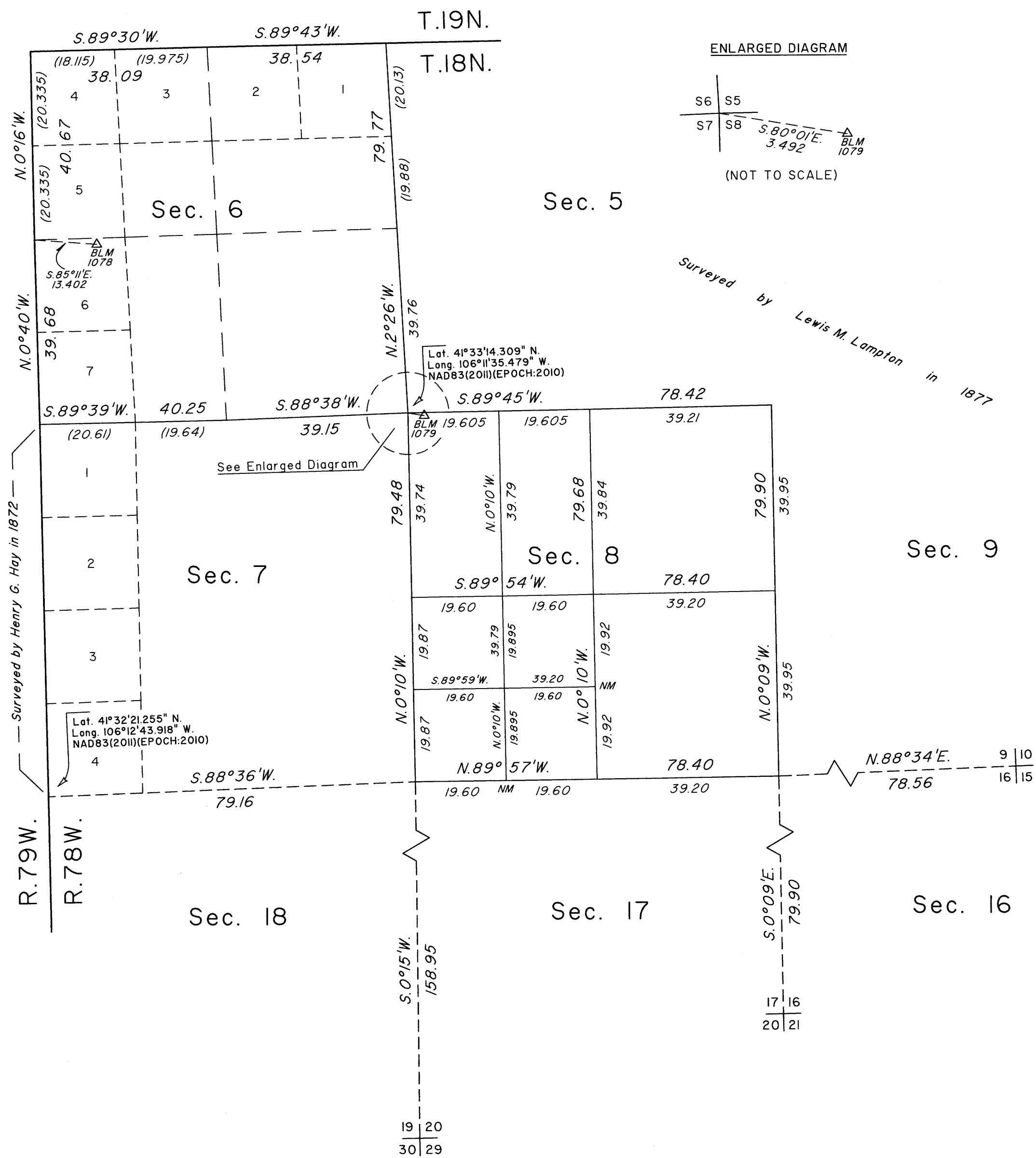
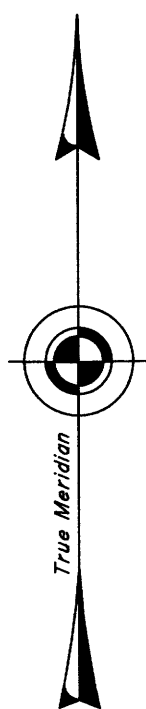


T. 18 N., R. 78 W., Sixth Principal Meridian, Wyoming, Field Note Links

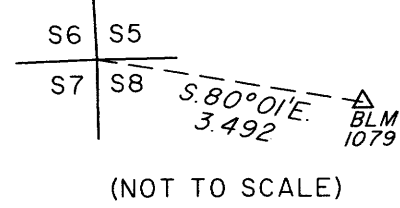
Plat Accession Number(s)	Year(s) of Survey	
		Township Subdivision Plats
8777	2018-19	https://www.wy.blm.gov/cadastral/countyplats/carbon/fieldnotes/t18nr78w_gp1004fn.pdf
8769	2018	https://www.wy.blm.gov/cadastral/countyplats/carbon/fieldnotes/t18nr78w_gp990fn.pdf
8070	1992-94	https://www.wy.blm.gov/cadastral/countyplats/carbon/fieldnotes/t18nr78w_gp565fn.pdf
-	1960	https://www.wy.blm.gov/cadastral/countyplats/carbon/fieldnotes/t18nr78w_gp262fn.pdf
547	1877	https://www.wy.blm.gov/cadastral/countyplats/carbon/fieldnotes/t18nr78w_c095fn.pdf
		Township Exterior Plats
6254	1939	https://www.wy.blm.gov/cadastral/countyplats/carbon/fieldnotes/ext3025.pdf
43	1872	https://www.wy.blm.gov/cadastral/countyplats/carbon/fieldnotes/ext0043.pdf

TOWNSHIP 18 NORTH, RANGE 78 WEST, OF THE SIXTH PRINCIPAL MERIDIAN, WYOMING.

DEPENDENT RESURVEY AND SURVEY



ENLARGED DIAGRAM



(NOT TO SCALE)

Surveyed by Lewis M. Lampton in 1877

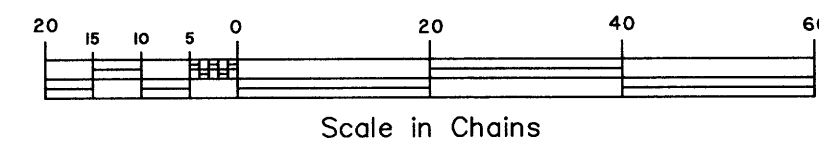
A history of surveys is contained in the field notes.

This plat represents the dependent resurvey of portions of the west and north boundaries and a portion of the subdivisional lines, designed to restore the corners in their true original locations according to the best available evidence, and the survey of the subdivision of section 8, T. 18 N., R. 78 W., Sixth Principal Meridian, Wyoming.

The lotting and areas are as shown on the plat approved January 17, 1878.

Survey executed by Eric J. Bearden and James E. Jacob, Cadastral Surveyors, beginning July 30, 2018, and completed August 20, 2019, pursuant to special instructions dated May 3, 2018, for Group No. 990, Wyoming, and reassignment instructions dated June 26, 2019.

Note: NM indicates corner not monumented.



UNITED STATES DEPARTMENT OF THE INTERIOR
BUREAU OF LAND MANAGEMENT

Cheyenne, Wyoming March 25, 2020

This plat is strictly conformable to the approved field notes, and the survey, having been correctly executed in accordance with the requirements of law and the regulations of this Bureau, is hereby accepted.

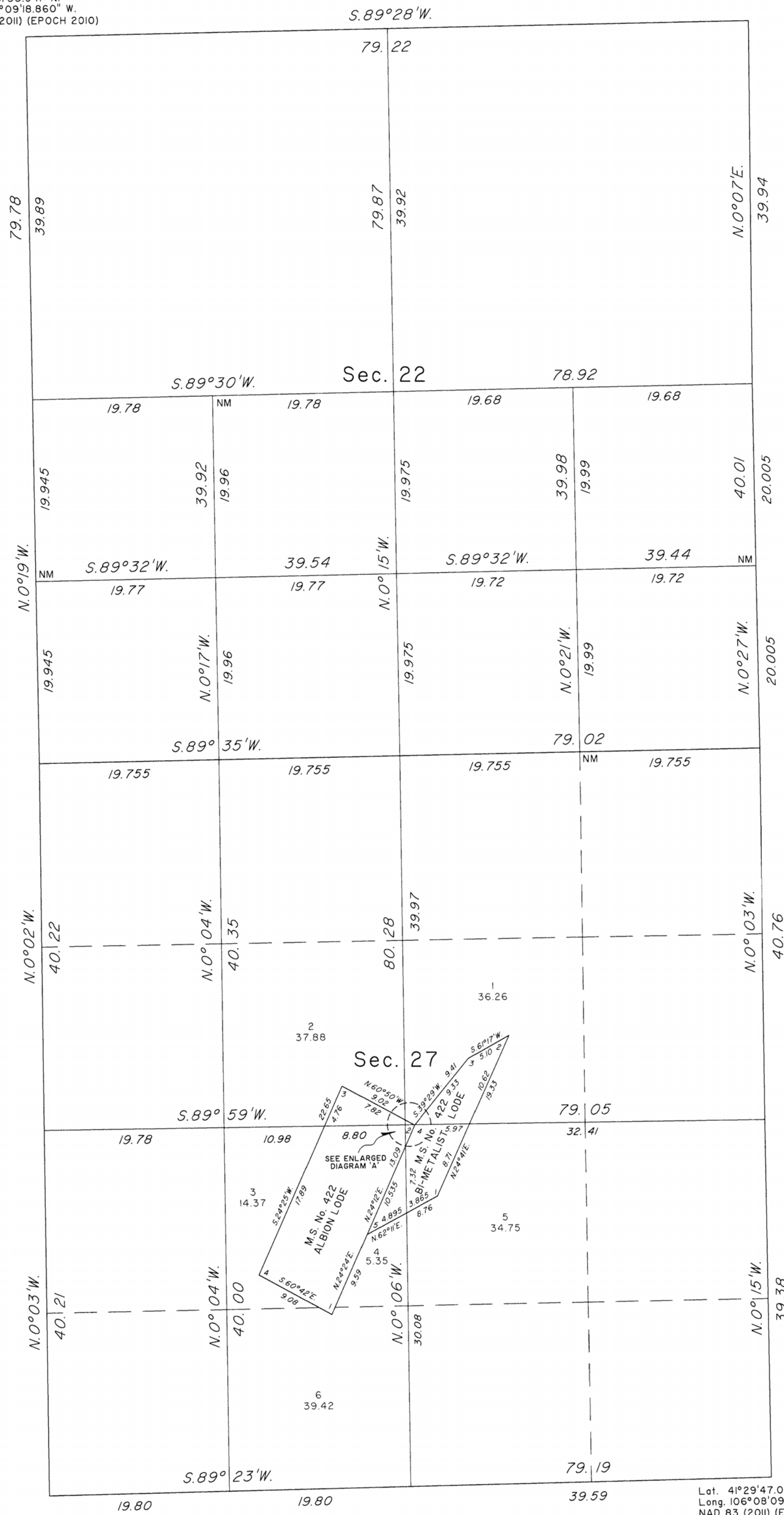
For the Director

Sonja S. Sparks
Chief Cadastral Surveyor for Wyoming

TOWNSHIP 18 NORTH, RANGE 78 WEST, OF THE SIXTH PRINCIPAL MERIDIAN, WYOMING.

DEPENDENT RESURVEY AND SURVEY

Lat. 41°31'30.941" N.
Long. 106°09'18.860" W.
NAD 83 (2011) (EPOCH 2010)



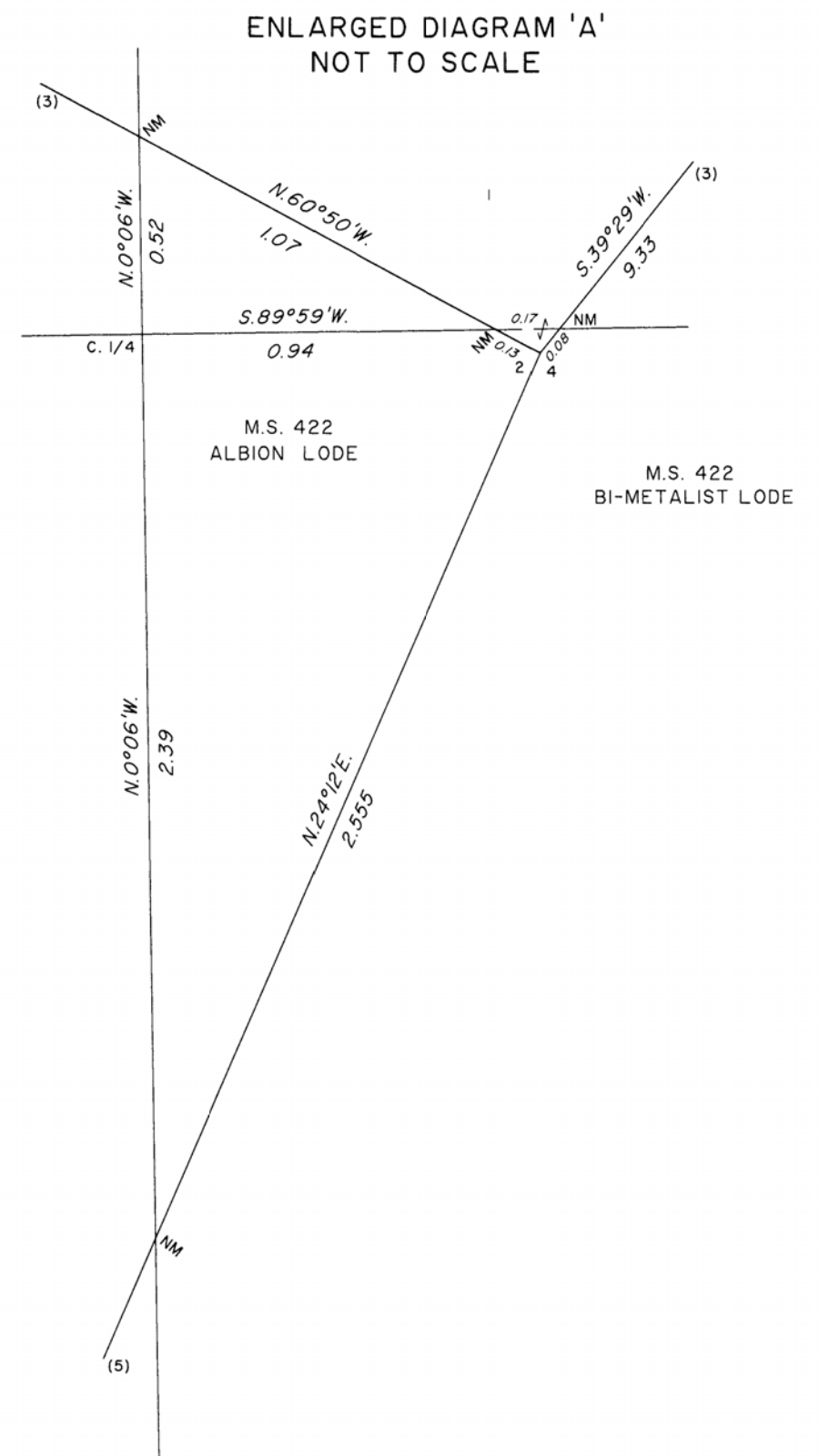
A history of surveys is contained in the field notes.

This plat represents the dependent resurvey of a portion of the subdivisional lines and Mineral Survey No. 422, designed to restore the corners in their true original locations according to the best available evidence, and the survey of the subdivision of sections 22 and 27, T. 18 N., R. 78 W., Sixth Principal Meridian, Wyoming.

Except as indicated hereon, the lottings and areas are as shown the plat approved January 17, 1878.

Survey executed by David C. Lee, Cadastral Surveyor, beginning September 10, 2018, and completed October 31, 2018, pursuant to special instructions and assignment instructions dated July 26, 2018, for Group No. 1004, Wyoming.

NM = Not Monumented



UNITED STATES DEPARTMENT OF THE INTERIOR
BUREAU OF LAND MANAGEMENT

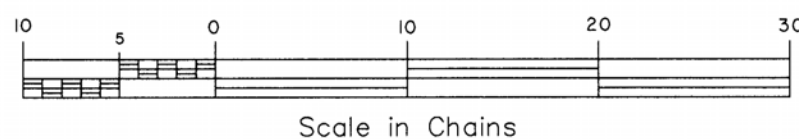
Cheyenne, Wyoming

May 31, 2019

This plat is strictly conformable to the approved field notes, and the survey, having been correctly executed in accordance with the requirements of law and the regulations of this Bureau, is hereby accepted.

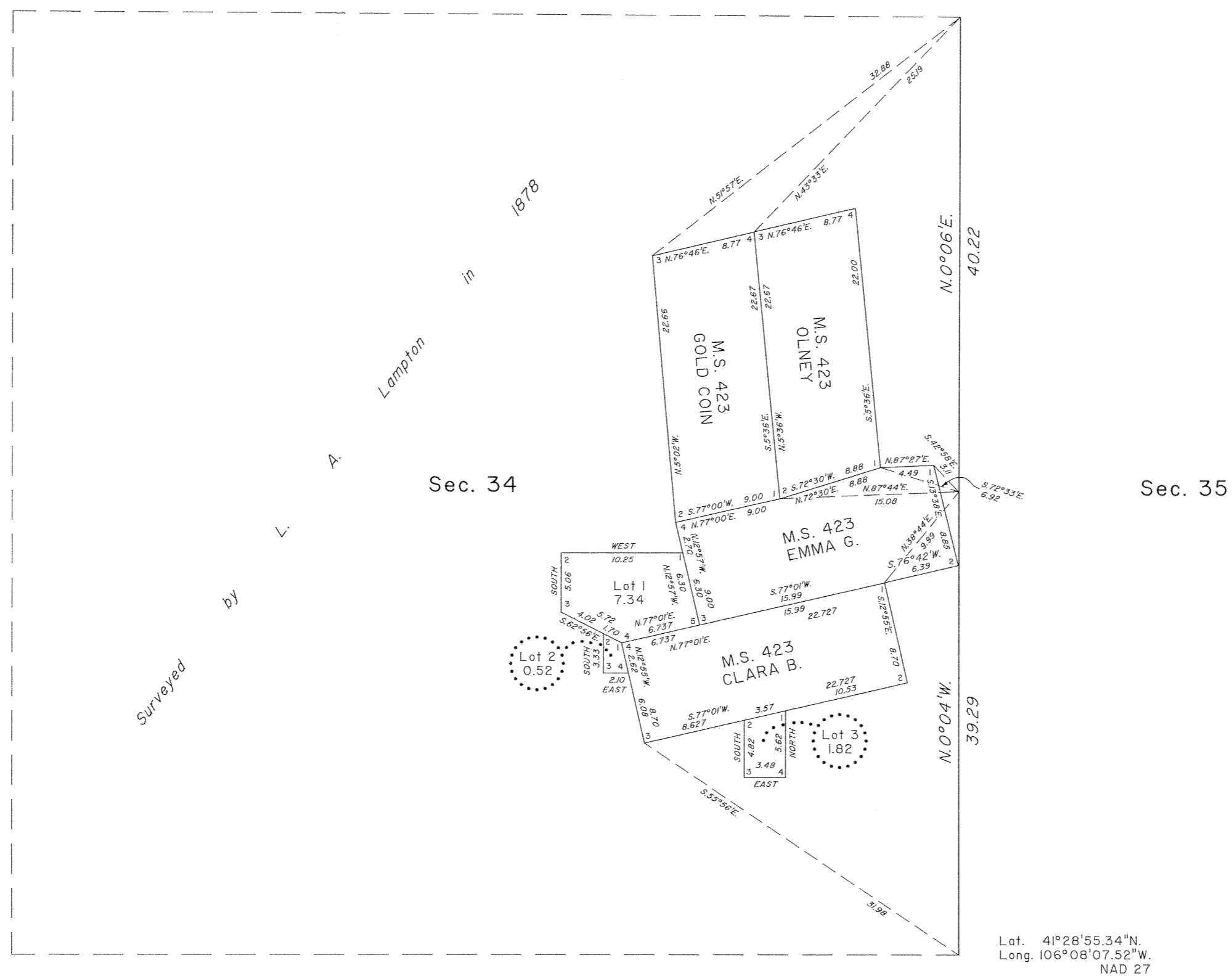
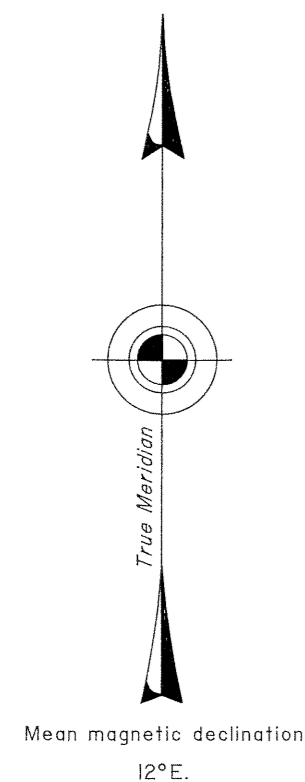
For the Director

Sonja S. Sparks
Chief Cadastral Surveyor for Wyoming



JTE

TOWNSHIP 18 NORTH, RANGE 78 WEST, OF THE SIXTH PRINCIPAL MERIDIAN, WYOMING.
DEPENDENT RESURVEY AND SURVEY



A history of surveys is contained in the field notes.

This plat represents the dependent resurvey of a portion of the subdivisional lines and Mineral Survey No. 423, designed to restore the corners in their true original locations according to the best available evidence, and the metes and bounds survey of Lots 1, 2, and 3, Section 34, T. 18 N., R. 78 W., Sixth Principal Meridian, Wyoming.

Except as indicated hereon, the lottings and areas are as shown on the plat approved January 17, 1878.

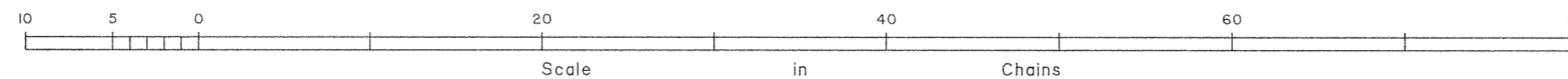
Survey executed by Gregory W. Asher, Cadastral Surveyor, beginning July 22, 1992, and completed November 22, 1994, pursuant to special instructions dated June 24, 1992, for Group No. 565, Wyoming.

UNITED STATES DEPARTMENT OF THE INTERIOR
BUREAU OF LAND MANAGEMENT

Cheyenne, Wyoming August 17, 1995

This plat is strictly conformable to the approved field notes, and the survey, having been correctly executed in accordance with the requirements of law and the regulations of this Bureau, is hereby accepted.

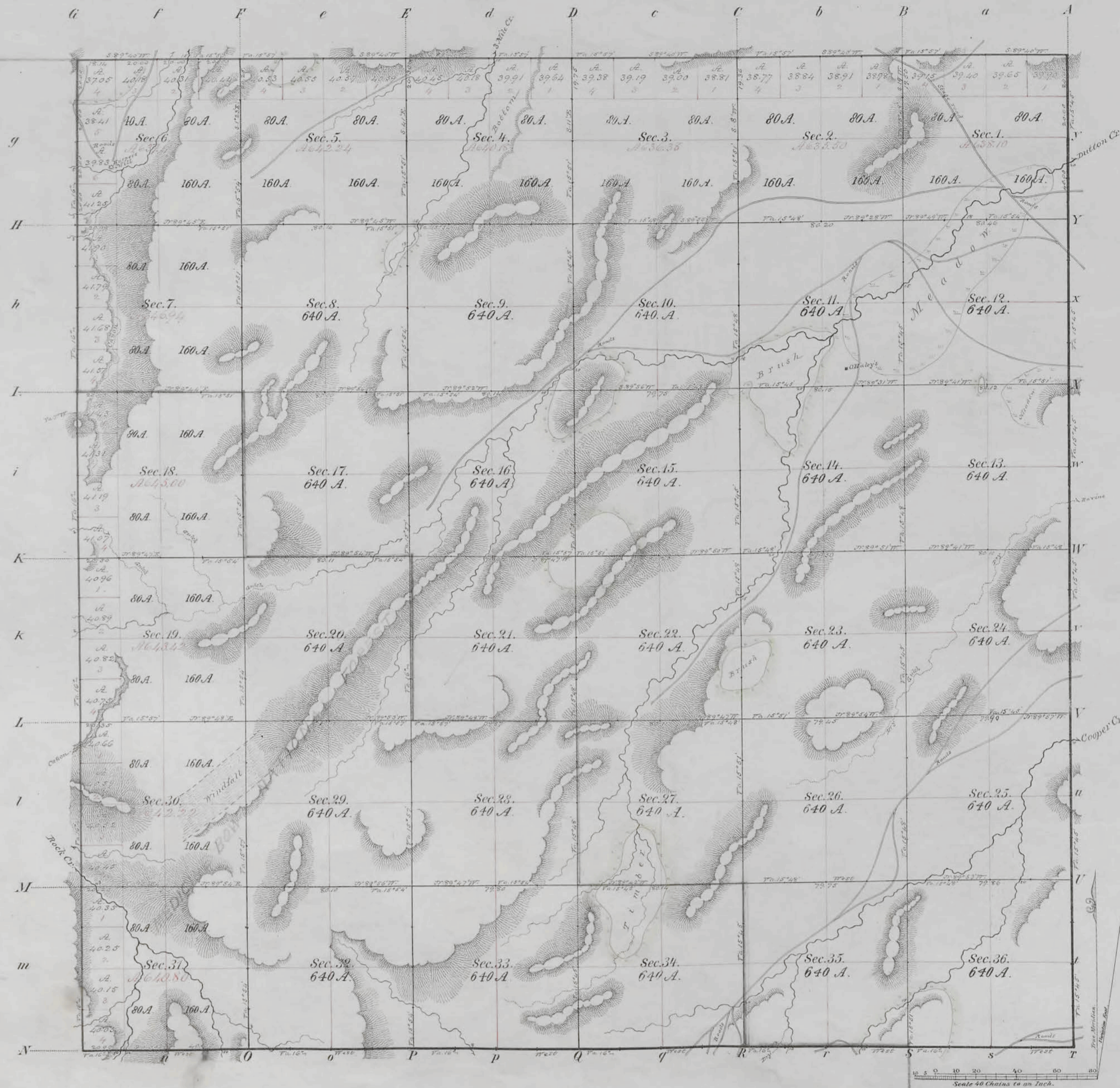
For the Director
John P. Lee
Chief Cadastral Surveyor for Wyoming



JPM

547

TOWNSHIP N^o 18 NORTH RANGE N^o 78 WEST of the 6th Principal MERIDIAN.



Total number of Acres. 23,048.25

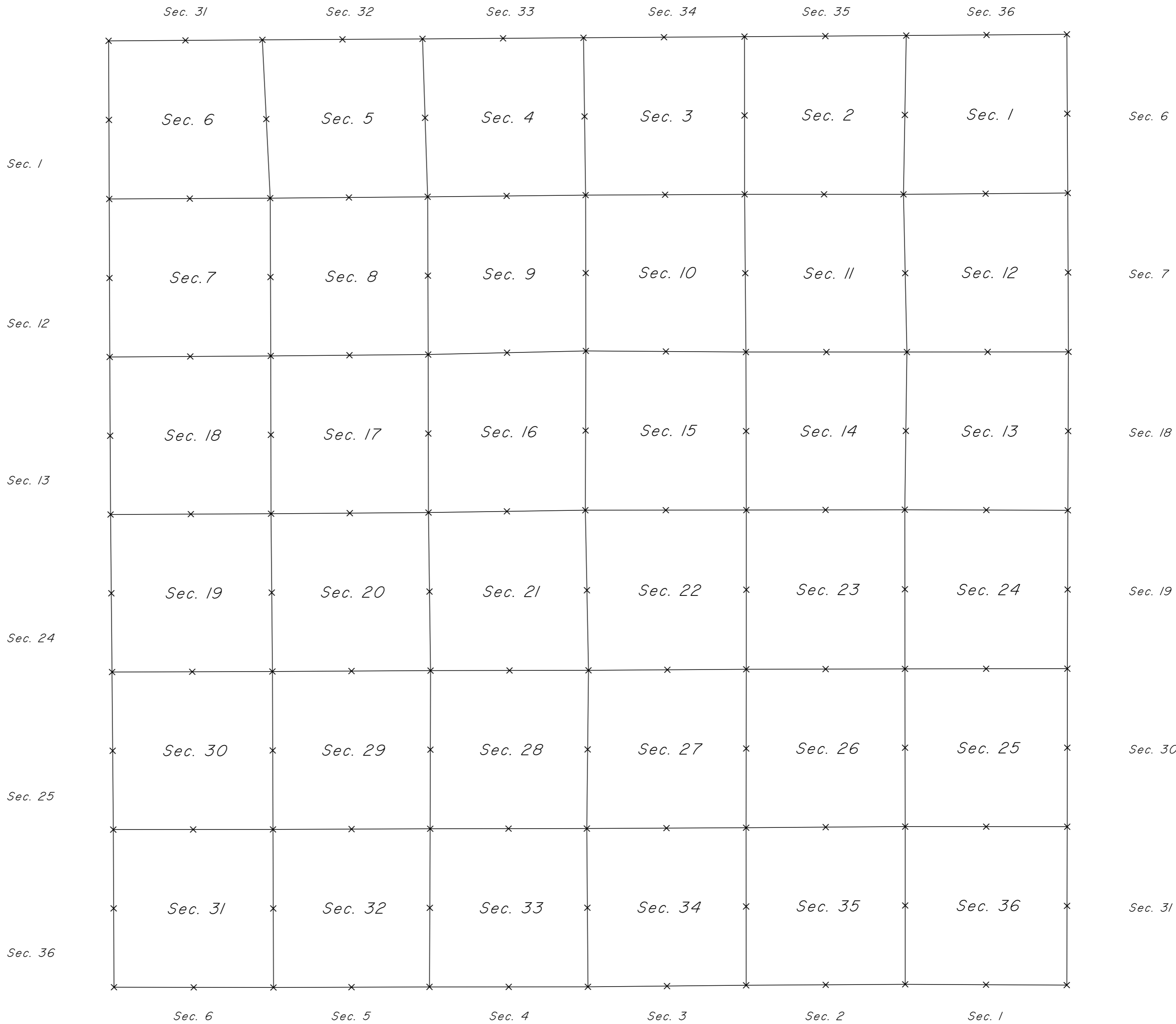
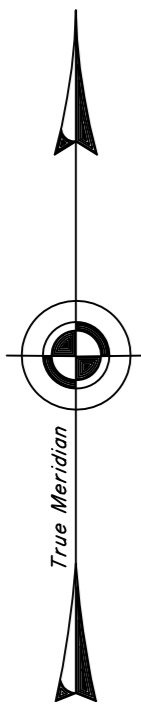
Survey Designated	By Whom Surveyed	Date of Contract	Amount of Survey M ² Ch ² L ²	When Surveyed
Township lines	H. G. Hay	July 1, 1871	23 78 14	Oct. 1871
Subdivisions	L. M. Lampton	Aug 24, 1877	60 1 76	Nov 1877
Connections				

The above Map of Township No. 18 North, of Range No. 78 West of the 6th Principal Meridian, Wyoming Territory, is strictly conformable to the field notes of the survey thereof on file in this Office, which have been examined and approved

Surveyor General's Office, *Edw. C. David* Sur. Gen.
Cheyenne, Wyo. Jan. 17, 1878.

TOWNSHIP 18 NORTH, RANGE 78 WEST OF THE SIXTH PRINCIPAL MERIDIAN, WYOMING.

INDEX TO CORNER REMONUMENTATION WITHOUT SURVEY



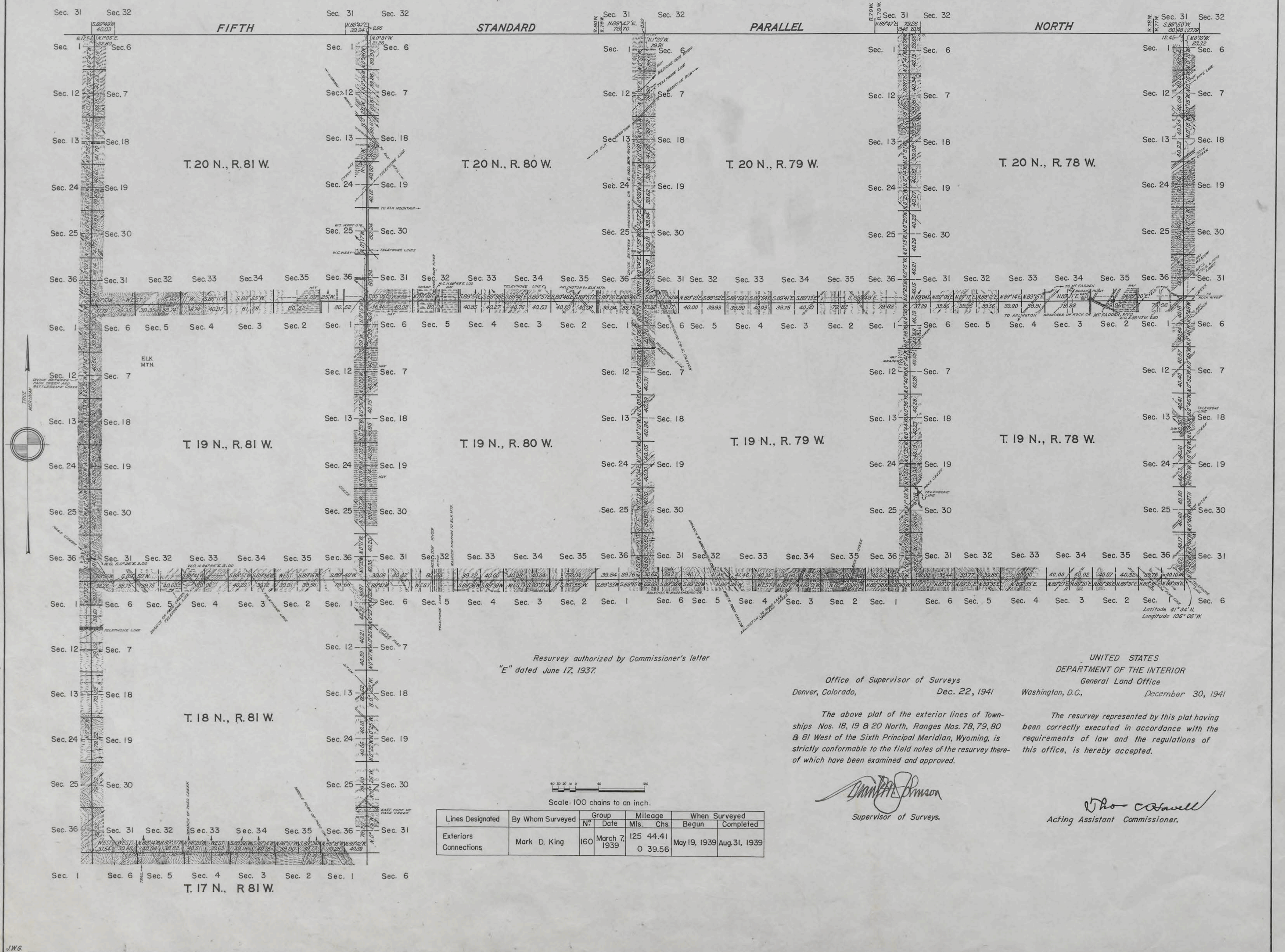
NOT TO SCALE

LEGEND

Remonumented Corner as Indicated

TOWNSHIPS N^{OS} 18, 19 & 20 NORTH, RANGES N^{OS} 78, 79, 80 & 81 WEST OF THE SIXTH PRINCIPAL MERIDIAN, WYOMING

DEPENDENT RESURVEY OF EXTERIOR LINES



Resurvey authorized by Commissioner's letter "E" dated June 17, 1937.

Office of Supervisor of Surveys
 Denver, Colorado, Dec. 22, 1941

UNITED STATES
 DEPARTMENT OF THE INTERIOR
 General Land Office
 Washington, D.C., December 30, 1941

The above plat of the exterior lines of Townships Nos. 18, 19 & 20 North, Ranges Nos. 78, 79, 80 & 81 West of the Sixth Principal Meridian, Wyoming, is strictly conformable to the field notes of the resurvey thereof which have been examined and approved.

The resurvey represented by this plat having been correctly executed in accordance with the requirements of law and the regulations of this office, is hereby accepted.

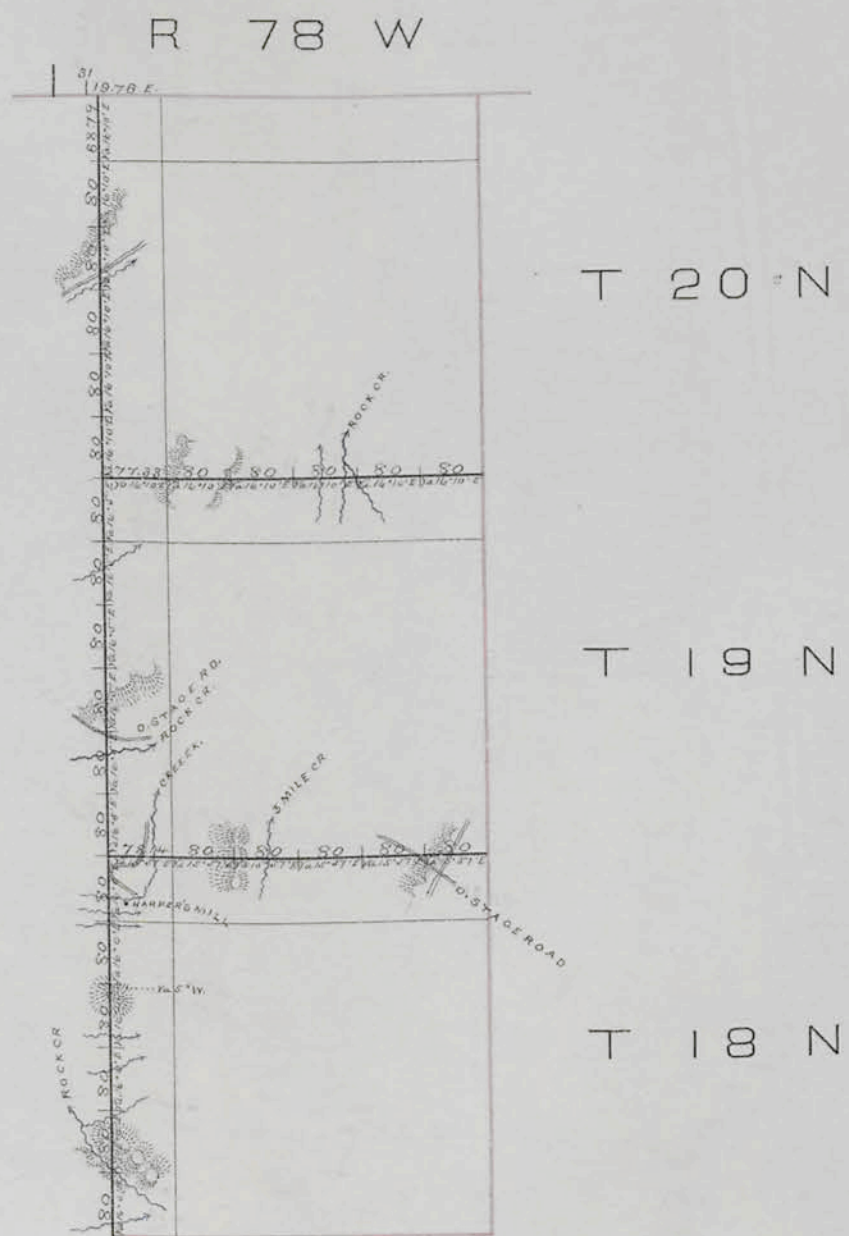
Samuel Johnson
Supervisor of Surveys.

John Howell
Acting Assistant Commissioner.

Scale: 100 chains to an inch.

*9
Index*

EXTERIOR LINES



Surveys Designated	By Whom Surveyed	Date of Contract	Int. of Survey	When Surveyed
Exterior Lines	Henry & Hay	July 1 st 1871	29 th 34 th 26 th	Aug. 15-30. 1872
			19 th 76	

I hereby Certify that the above Diagram of the Exterior Lines of Townships 18, 19, and 20 North, of Range 78 West of the 8th Principal Meridian, in Wyoming Territory, is strictly conformable to the field notes of the survey thereof, on file in this Office, which have been examined and approved.

Surveyor General's Office,
Cheyenne Wyo. Sept. 27th 1872.

Silas Reed
Sur^g Genl.

T. 18 N., R. 78 W., Sixth Principal Meridian, Wyoming, Mineral Survey Links

Plat Accession Number(s)	Year(s) of Survey	
		Mineral Survey No. 422 (Section 27)
5813	1908	https://www.wy.blm.gov/cadastral/mineralsurvey/400-449/ms422.pdf
		Mineral Survey No. 423 (Section 34)
5814	1908	https://www.wy.blm.gov/cadastral/mineralsurvey/400-449/ms423.pdf