

T. 29 N., R. 72 1/2 W., Sixth Principal Meridian, Wyoming, Field Note Links

Plat Accession Number(s)	Year(s) of Survey	
		Township Subdivision Plats
4882	1907	https://www.wy.blm.gov/cadastral/countyplats/converse/fieldnotes/t29nr72.5w_c323fn.pdf
		Township Exterior Plats
4876	1907	https://www.wy.blm.gov/cadastral/countyplats/converse/fieldnotes/retext2921.pdf

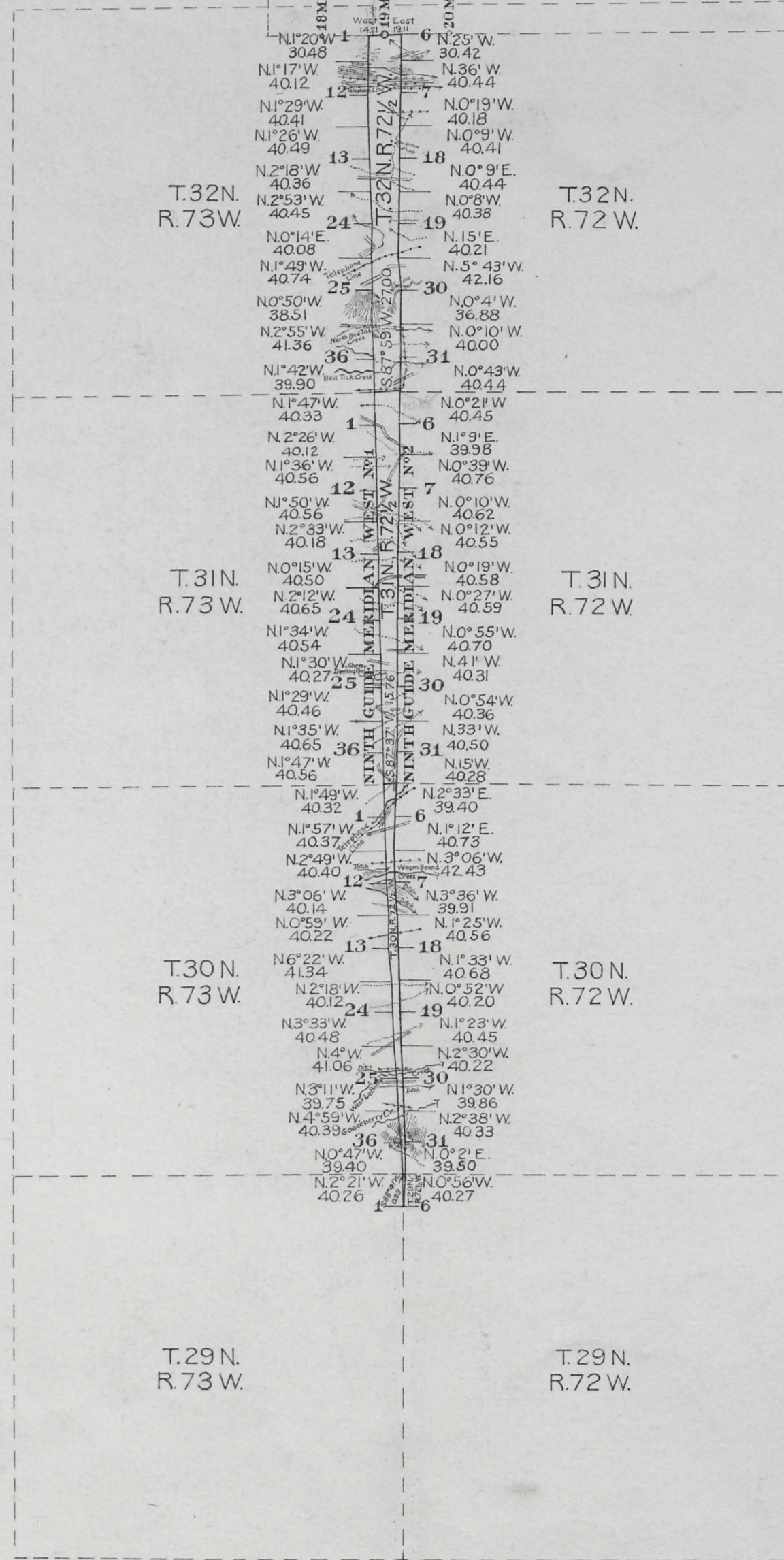
4876

TOWNSHIP EXTERIORS

Scale: 1 inch to 160 chains

ABANDONED
FORT FETTERMAN
MILITARY RESERVATION

EIGHTH STANDARD PARALLEL NORTH



This Plat
of the
Retracement
of the
Ninth Guide Meridian West N°1 through Townships
29, 30, 31 and 32 North, Ranges 72½ and 73 West,
Ninth Guide Meridian West N°2, through Townships
29, 30, 31 and 32 North, Ranges 72 and 72½ West,
and the
North boundaries of Townships 29, 30 and 31, Range
72½ West of the
Sixth Principal Meridian
Wyoming
is strictly conformable to the field notes of the
resurvey thereof by
Edward F. Stahle U.S. D.S.
under his
Contract N° 323
dated March 27, 1907

which have been examined, approved and filed
in this office
U.S. Surv. Gen'l's Office,
Cheyenne, Wyoming,
November 24, 1908.

Alpheus P. Hanson
U.S. Surv. Gen'l.

Surveys Designated	Amount		When Surveyed
	Mls.	Chs. Lks.	
Standard Lines	36	4 71	August 13-29, 1907
Township Lines	43	75	" " " "
Connections	1	64 38	" " " "

*Survey accepted by the Hon. Commissioner
of the G. L. O. in his letter "E" Feb'y 4, 1909.*