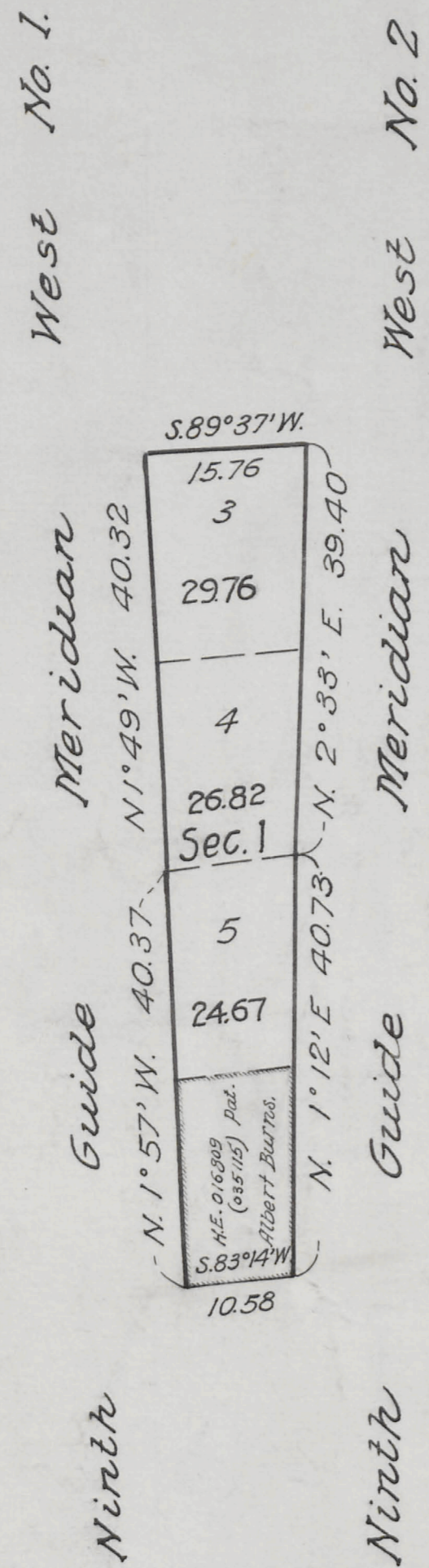


## T. 30 N., R. 72 1/2 W., Sixth Principal Meridian, Wyoming, Field Note Links

Plat Accession Number(s)	Year(s) of Survey	
		Township Subdivision Plats
4885	1927	<a href="https://www.wy.blm.gov/cadastral/countyplats/converse/fieldnotes/t31nr72w_gp096fn_elimt.pdf">https://www.wy.blm.gov/cadastral/countyplats/converse/fieldnotes/t31nr72w_gp096fn_elimt.pdf</a>
4884	1926	<a href="https://www.wy.blm.gov/cadastral/countyplats/converse/fieldnotes/t30nr72w_gp086fn_plc.pdf">https://www.wy.blm.gov/cadastral/countyplats/converse/fieldnotes/t30nr72w_gp086fn_plc.pdf</a>
4883	1907	<a href="https://www.wy.blm.gov/cadastral/countyplats/converse/fieldnotes/t30nr72.5w_c323fn.pdf">https://www.wy.blm.gov/cadastral/countyplats/converse/fieldnotes/t30nr72.5w_c323fn.pdf</a>
		Township Exterior Plats
4876	1907	<a href="https://www.wy.blm.gov/cadastral/countyplats/converse/fieldnotes/retext2921.pdf">https://www.wy.blm.gov/cadastral/countyplats/converse/fieldnotes/retext2921.pdf</a>



Supplemental Plat No. 2.  
 TOWNSHIP No. 30 NORTH, RANGE No. 72½ WEST OF THE SIXTH PRINCIPAL MERIDIAN, WYOMING  
 Scale 1 inch = 15 chs.



Note: Patented H. E. 035115 of Albert Burns relates to plat of T. 30 N., R. 72½ W. approved November 24, 1908.

This Supplemental Plat No. 2, Township No. 30 North, Range No. 72½ West of the Sixth Principal Meridian, Wyoming, plat approved November 24, 1908 is prepared in accordance with instructions given in Commissioner's Letter "E" dated May 27, 1927 for the purpose of showing fractional lots in Section 1, created by the elimination of Tract No. 45, by Mark D. King, U. S. Cadastral Engineer, in Group 36 Wyoming, and is hereby approved.

Office of U. S. Supervisor of Surveys,  
 Denver, Colorado, November 26, 1927.

*Franklin Johnson*  
 U. S. Supervisor of Surveys.

DEPARTMENT OF THE INTERIOR  
 General Land Office.  
 Washington, D. C. December 2, 1927.

The survey represented by this plat having been correctly executed in accordance with the requirements of law and the regulations of this office is hereby accepted.

*Thos C Howell*  
 Assistant Commissioner.

Note: For Details of the Elimination of Tract 45, see Supp. plat No. 2, Res. of T. 31 N., R. 72 W. approved concurrently.

2926-B

Drawn to Cheyenne L.O.  
 Feb 30, 1928

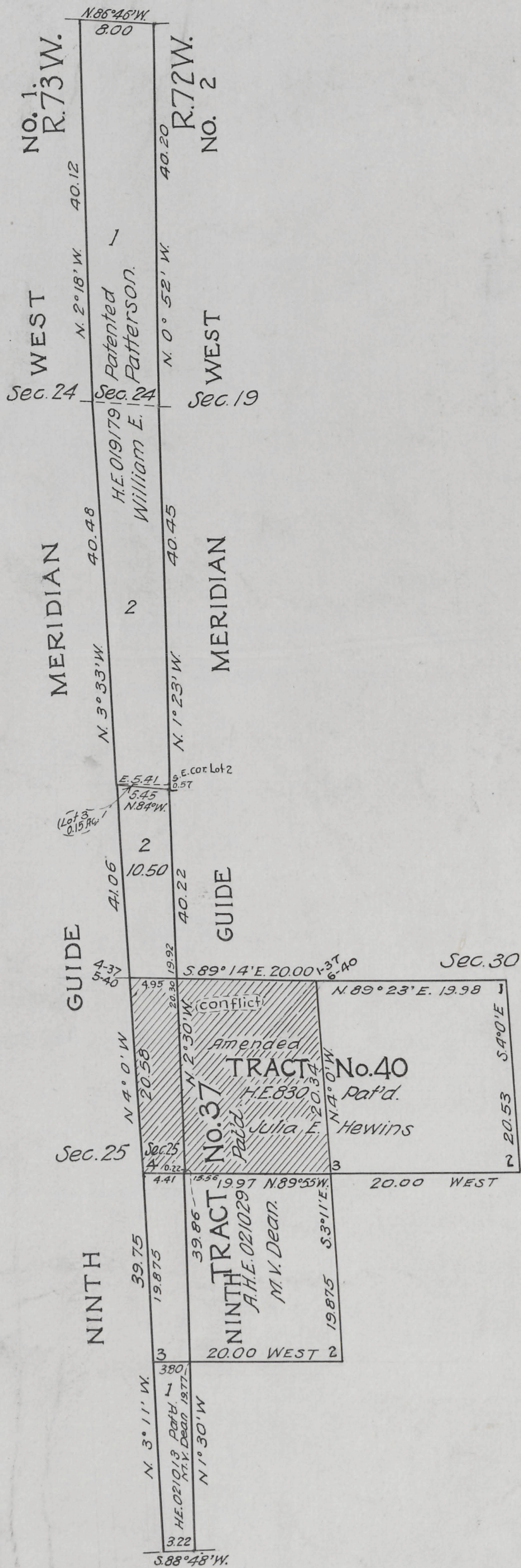
30 - 72½

119  
*WKR*  
*[Signature]*



Supplemental Plat No.1  
TOWNSHIP No.30 NORTH RANGE No.72½ WEST OF THE SIXTH PRINCIPAL MERIDIAN WYOMING

Scale 1in.= 10 chs.



INDEX TO SEGREGATED TRACTS

Resurvey	ORIGINAL SURVEY								
	Tract No.	T.	R.	Sec.	Subdivisions	Entry kind	Number	Status	Entryman
37	30	72	30	Pat'd under resur descriptions.		A.H.E.	021029	Pat'd	M.V. Dean
40 (am'd)	30	72	30	Lot 2, SE¼ NW¼		H.E.	830	Pat'd	Julia E. Hewins

For statement of Mileage, See Supp. Plat No. 2, T. 30 N., R. 72 W.

STATEMENT OF CONFLICT

Area of Conflict, Tract 40 with Tract 37 of which  
 9.62 Acs. falls in Sec. 25, T. 30 N., R. 72½ W.  
 31.27 " " " Sec. 30, T. 30 N., R. 72 W.  
 40.89 " = Total conflict

Office of U.S. Supervisor of Surveys.  
Denver, Colorado December 20, 1926.

This Supplemental Plat No. 1 Township 30 North, Range 72½ West, survey and plat approved Nov. 24, 1908, is prepared from office records and field notes of surveys executed by Mark D. King under Group 86-Wyo. for the purpose of showing the segregation of amended Tract No. 40 and the fractional lots created thereby in Secs. 24 and 25, and is hereby approved.

*Wm. H. Johnson*  
 U.S. Supervisor of Surveys.

DEPARTMENT OF THE INTERIOR  
 GENERAL LAND OFFICE  
 Washington, D.C. March 7, 1927.

The survey represented by this plat having been correctly executed in accordance with the requirements of the law and the regulations of this office is hereby accepted.

*Wm. C. Howell*  
 Assistant Commissioner

30 - 72½  
 Shamo m... & Ch...  
 May 14, 1927.

2926-A

4884

of 5/26



4883

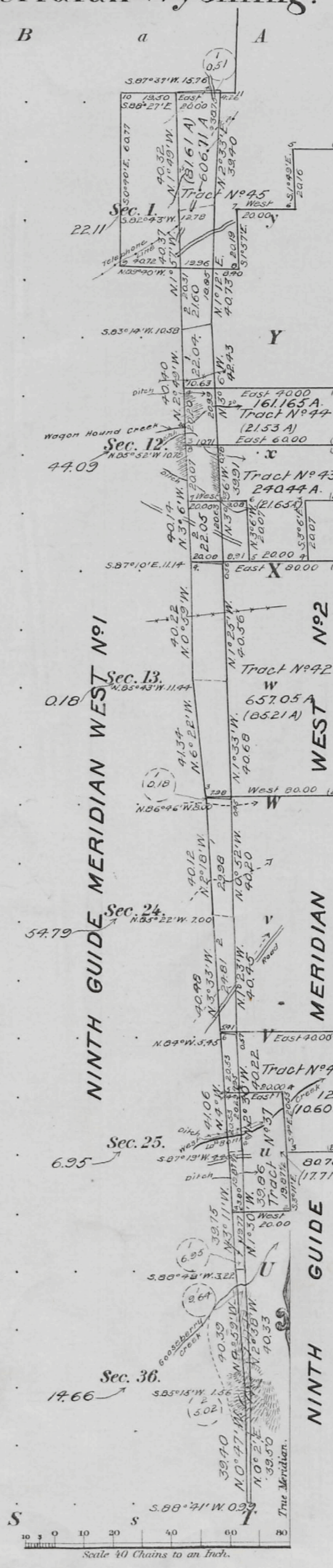
(4-675a)

Township N<sup>o</sup> 30 North, Range N<sup>o</sup> 72 $\frac{1}{2}$  West of the Sixth Principal Meridian Wyoming.

G f F e E d D c C b B a A

g  
H  
h  
I  
i  
K  
k  
L  
l  
M  
m  
N

n O o P p Q q R r S



Meanders of								
Posts	Courses	Ch <sup>2</sup> Lk <sup>2</sup>	Posts	Courses	Ch <sup>2</sup> Lk <sup>2</sup>	Posts	Courses	Ch <sup>2</sup> Lk <sup>2</sup>

INDEX TO SEGREGATED TRACTS

Original Survey				Kind	Entryman
Tract No.	T. R. Sec.	Subdivision	Acres	No.	Name
37	30 7E	30 NW SW SW NW	17.71	H 410	Henry H. Dean
40	" "	19 SE NW Lot 2	10.60	H 830	Julia E. Hewins
42	" "	18 All	36.21	S.L.	Wyoming
43	" "	7 SE NE NASE EASW NW SW	21.65	D 10	Susie Love Moore
44	" "	7 W NE SE NW Lot 2	21.53	D 1209	Arthur A. Falknor
45	" "	6 Lots 2, 3, 4, 5 & 6, SE NW	81.61	D 1693	Clemens Oskamp
"	"	31 SE E SW	"	"	"
"	"	30 7E Lot 1, SE NE NE SE	"	"	"

Segregated Tracts

Number	Area	
	Total	In Township
37	17.71	17.71 Acres
40	10.60	10.60 "
42	36.21	36.21 "
43	21.65	21.65 "
44	21.53	21.53 "
45	81.61	81.61 "
Total		238.31 Acres.

Latitude 42° 31' N.  
Longitude 105° 32' W.  
Mag. Decl. 16° 2' E.

Surveys Designated	By Whom Surveyed	Date of Contract No.	Amount of Surveys Ch <sup>2</sup> Lk <sup>2</sup>	When Surveyed
Retracement Township lines	Edward F. Stahl	323, March 27, 1907	12 15 01	Aug 13-17-1907
Subdivisions	"	" " " "	38 39	" 19-21- "
Segregated Tracts	"	" " " "	17 59 58	" 15-17- "
Connections	"	" " " "	47 96	" 19-21- "

Segregated Tracts 238.31 Public Land 142.78 Total number of Acres 381.09

The above Map of Township No. 30 North of Range No. 72 $\frac{1}{2}$  West of the Sixth Principal Meridian, Wyoming is strictly conformable to the field notes of the survey thereof on file in this Office, which have been examined and approved.

Surveyor General's Office, Cheyenne, Wyoming, Nov. 24, 1908.

*Alphonso W. Johnson*  
Sur. Gen.

2926

30-72 $\frac{1}{2}$

Survey accepted by the Hon. Commissioner of the P.L.O. in his letter "E" Feb'y 4, 1909. Duplicate forwarded to Douglas Land Office May 4, 1909.



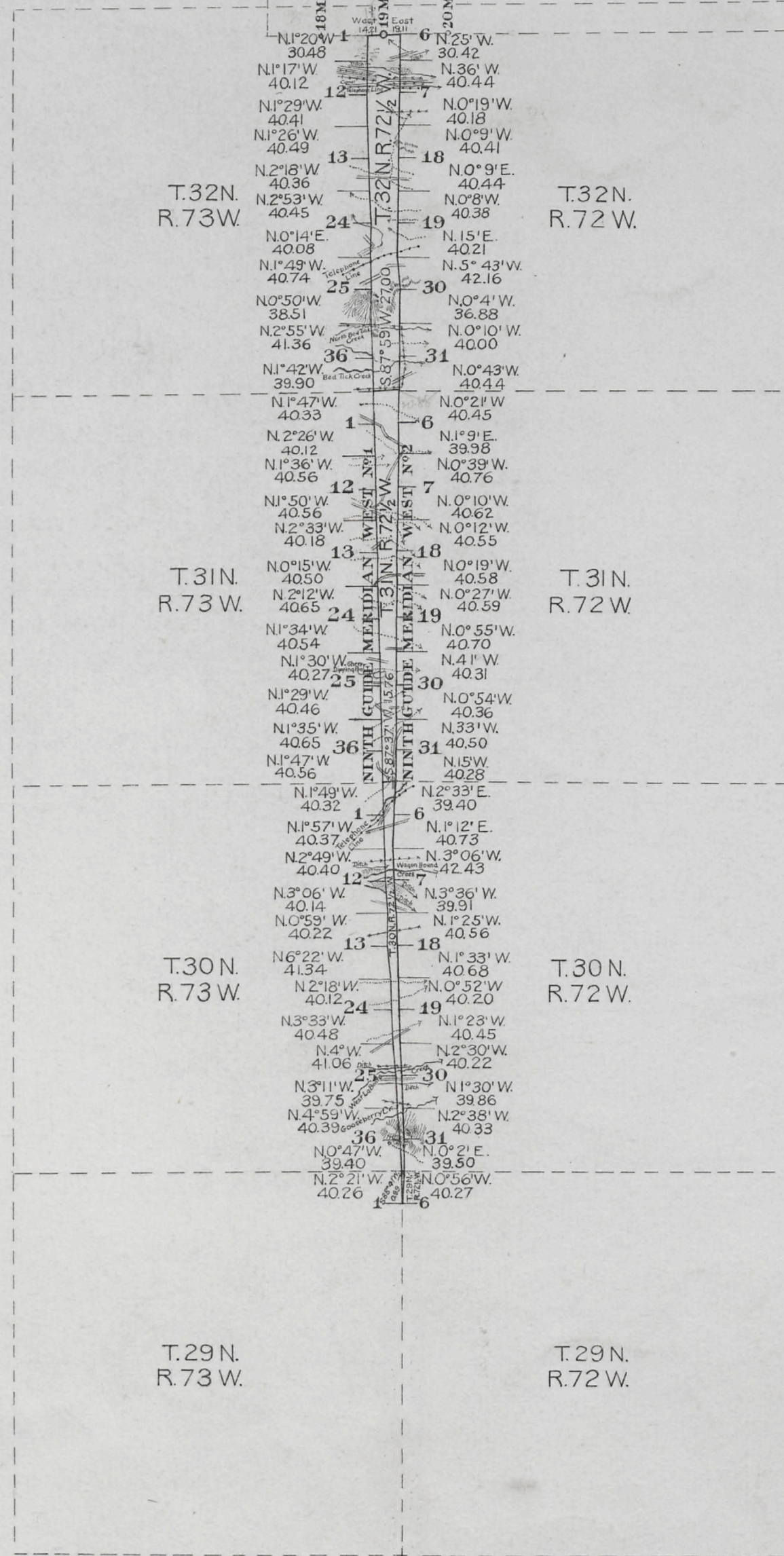
4876

# TOWNSHIP EXTERIORS

Scale: 1 inch to 160 chains

ABANDONED  
FORT FETTERMAN  
MILITARY RESERVATION

EIGHTH STANDARD PARALLEL NORTH



This Plat  
of the  
Retracement  
of the  
Ninth Guide Meridian West N°1 through Townships  
29, 30, 31 and 32 North, Ranges 72½ and 73 West,  
Ninth Guide Meridian West N°2, through Townships  
29, 30, 31 and 32 North, Ranges 72 and 72½ West,  
and the  
North boundaries of Townships 29, 30 and 31, Range  
72½ West of the  
Sixth Principal Meridian  
Wyoming  
is strictly conformable to the field notes of the  
resurvey thereof by  
Edward F. Stahle U.S. D.S.  
under his  
Contract N° 323  
dated March 27, 1907

which have been examined, approved and filed  
in this office  
U.S. Surv. Gen'l's Office,  
Cheyenne, Wyoming,  
November 24, 1908.

*Alpheus P. Hanson*  
U.S. Surv. Gen'l.

Surveys Designated	Amount		When Surveyed
	Mls.	Chs. Lks.	
Standard Lines	36	4 71	August 13-29, 1907
Township Lines	43	75	" " " "
Connections	1	64 38	" " " "

*Survey accepted by the Hon. Commissioner  
of the G. L. O. in his letter "E" Feb'y 4, 1909.*