

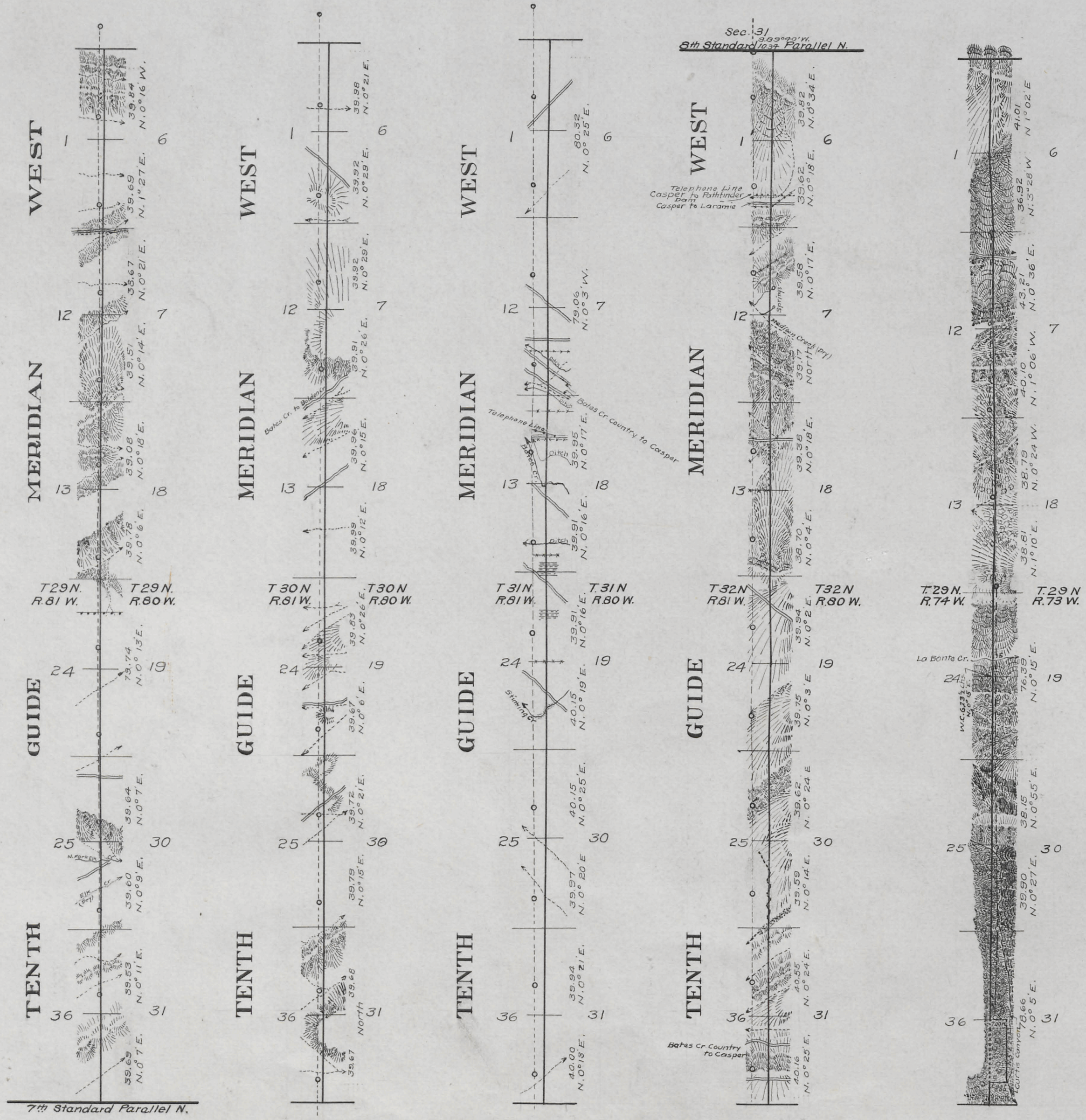
T. 31 N., R. 72 1/2 W., Sixth Principal Meridian, Wyoming, Field Note Links

Plat Accession Number(s)	Year(s) of Survey	
		Township Subdivision Plats
4886	1907	https://www.wy.blm.gov/cadastral/countyplats/converse/fieldnotes/t31nr72.5w_c323fn.pdf
		Township Exterior Plats
4942	1914-15	https://www.wy.blm.gov/cadastral/countyplats/converse/fieldnotes/ext2978a.pdf
4943	1914-15	https://www.wy.blm.gov/cadastral/countyplats/converse/fieldnotes/retext2978b.pdf
4876	1907	https://www.wy.blm.gov/cadastral/countyplats/converse/fieldnotes/retext2921.pdf

PLAT A

TOWNSHIP EXTERIORS

Scale: inch to 40 chains.



This plat "A" and the accompanying plat "B" of the Tenth Guide Meridian West, through Ts. 29, 30, 31 and 32 N. between Rs. 80 and 81 W.; the east boundary of T. 29 N., R. 74 W.; the south and east boundaries of Ts. 31 and 32 N., R. 74 W.; the east boundary of T. 31 N., R. 75 W., and the south boundaries of Ts. 31, and 32 N., R. 73 W., of the Sixth Principal Meridian, in the state of Wyoming, shows the restoration resurvey of said lines based on the position of monuments of the original surveys and indicates the position of the obliterated Owen 1891 resurvey of said lines; also a retracement of the Ninth Guide Meridian West, No. 1, through T. 31 N. and part of T. 32 N., between Rs. 72½ and 73 W., is shown.

This plat is strictly conformable to the field notes of the above mentioned resurveys and retracements by W. H. Clark, U.S. Surveyor, under his special instructions, for Group No. 5, Wyoming, dated April 25, 1911, which have been examined, approved and filed in this office.
 U.S. Surveyor General's Office.
 Cheyenne, Wyoming,
 May 21, 1917

Charles L. Secker
 Surveyor General.

Surveys Designated	Amount		When Surveyed	
	Mts.	Chs. Lns.	Begun	Completed
Resurvey Meridian Lines	23	68 05	Nov. 28, 1914	Aug. 31, 1915
Resurvey Township Lines	46	72 71	Oct. 8, 1914	June 4, 1915
Retracement Meridian Lines	11	36 61	May 12, 1915	June 4, 1915
Connections		23 61	Nov. 28, 1914	Aug. 31, 1915

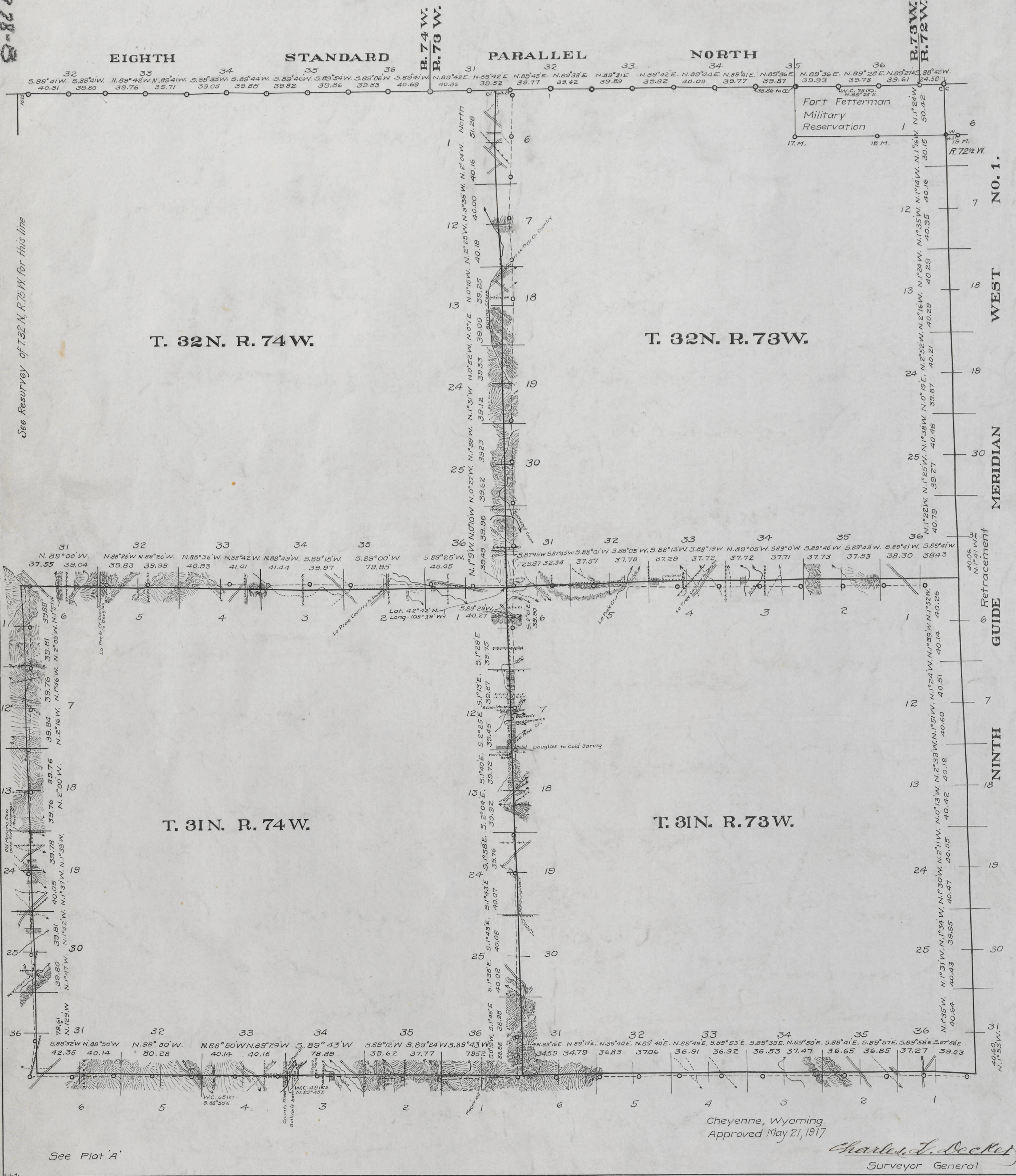
ORIGINAL

2978-B

4043

PLAT B. TOWNSHIP EXTERIORS

Scale 1 inch to 60 Chains.



See Resurvey of T. 32 N. R. 75 W. for this line

T. 32 N. R. 74 W.

T. 32 N. R. 73 W.

T. 31 N. R. 74 W.

T. 31 N. R. 73 W.

Cheyenne, Wyoming.
Approved May 21, 1917

Charles J. Decker
Surveyor General

See Plat A

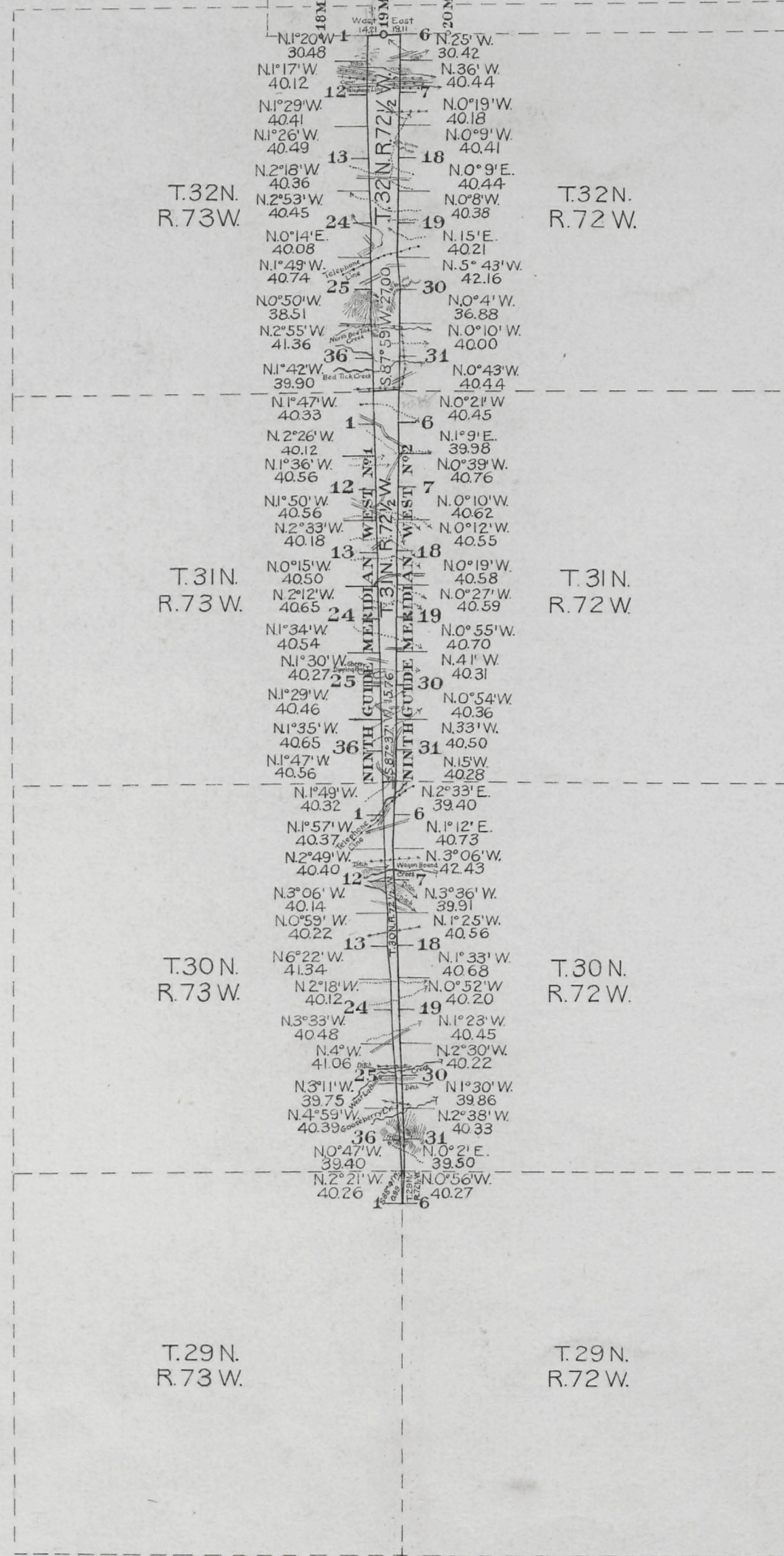
4876

TOWNSHIP EXTERIORS

Scale: 1 inch to 160 chains

ABANDONED
FORT FETTERMAN
MILITARY RESERVATION

EIGHTH STANDARD PARALLEL NORTH



This Plat
of the
Retracement
of the
Ninth Guide Meridian West N°1 through Townships
29, 30, 31 and 32 North, Ranges 72½ and 73 West,
Ninth Guide Meridian West N°2, through Townships
29, 30, 31 and 32 North, Ranges 72 and 72½ West,
and the
North boundaries of Townships 29, 30 and 31, Range
72½ West of the
Sixth Principal Meridian
Wyoming
is strictly conformable to the field notes of the
resurvey thereof by
Edward F. Stahle U.S. D.S.
under his
Contract N° 323
dated March 27, 1907

which have been examined, approved and filed
in this office
U.S. Surv. Gen'l's Office,
Cheyenne, Wyoming,
November 24, 1908.

Stephen P. Hanson
U.S. Surv. Gen'l.

Surveys Designated	Amount		When Surveyed
	Mls.	Chs. Lks.	
Standard Lines	36	4 71	August 13-29, 1907
Township Lines	43	75	" " " "
Connections	1	64 38	" " " "

*Survey accepted by the Hon. Commissioner
of the G. L. O. in his letter "E" Feb'y 4, 1909.*