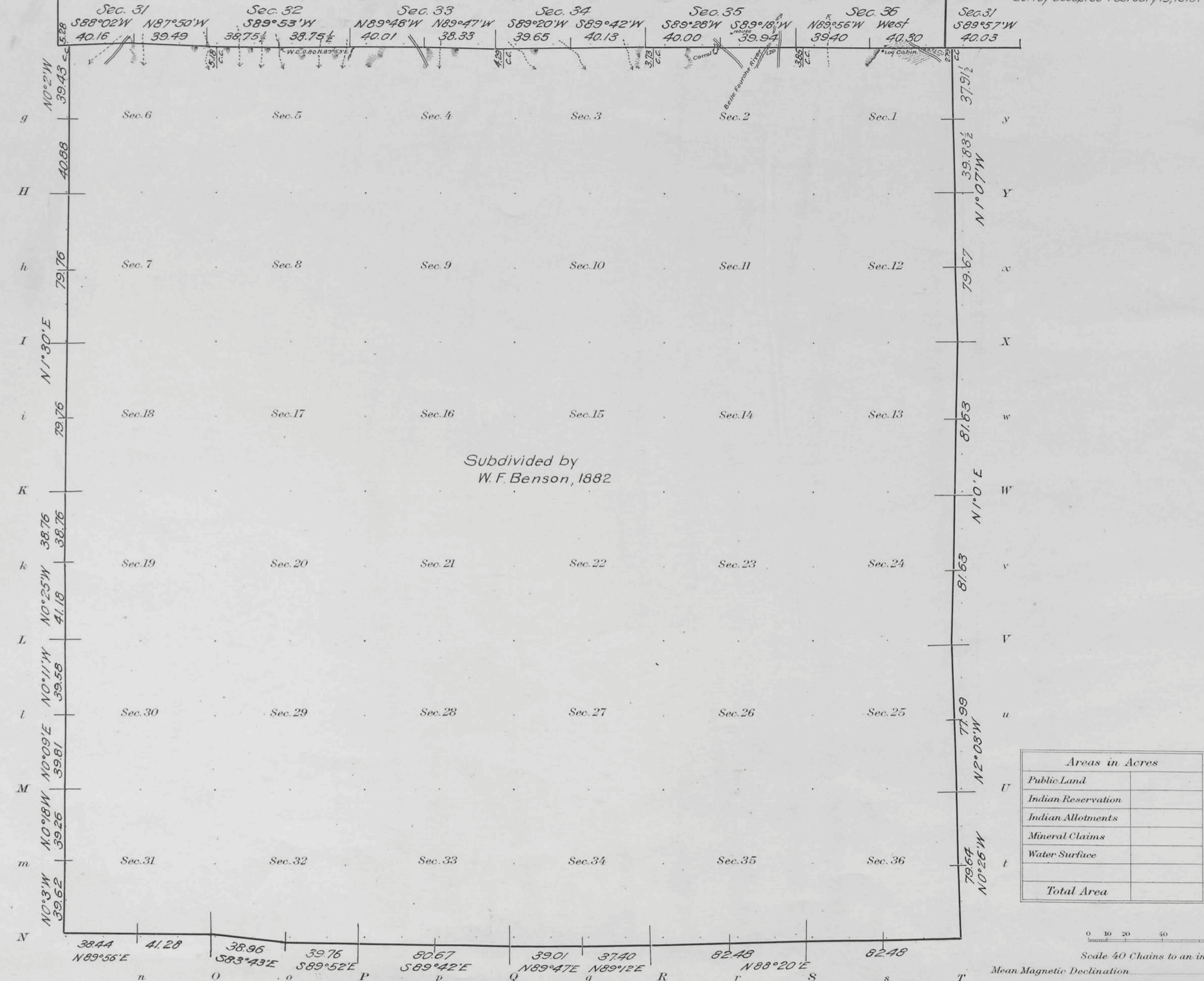


T. 52 N., R. 66 W., Sixth Principal Meridian, Wyoming, Field Note Links

Plat Accession Number(s)	Year(s) of Survey	
		Township Subdivision Plats
8774	2017	https://www.wy.blm.gov/cadastral/countyplats/crook/fieldnotes/t52nr66w_gp934fn.pdf
2279	1882	https://www.wy.blm.gov/cadastral/countyplats/crook/fieldnotes/t52nr66w_c206fn.pdf
		Township Exterior Plats
2280	1915	https://www.wy.blm.gov/cadastral/countyplats/crook/fieldnotes/t52nr66w_gp036fn_bnd.pdf
2312	1882	https://www.wy.blm.gov/cadastral/countyplats/crook/fieldnotes/ext2312.pdf
2312	1882	https://www.wy.blm.gov/cadastral/countyplats/crook/fieldnotes/retext1663.pdf

Resurvey Exterior Bdy's
 Township No. 52 North Range No. 66 West of the Sixth Principal Meridian, Wyoming.
 Thirteenth Standard Parallel North
 R.67W. R.66W. R.66W. R.65W. Survey accepted February 15, 1918.



Areas in Acres	
Public Land	
Indian Reservation	
Indian Allotments	
Mineral Claims	
Water Surface	
Total Area	

Surveys Designated	By Whom Surveyed	Group		Amount of Surveys		When Surveyed	
		No.	Date	Mls.	chs.	lls.	When Surveyed
Resurvey 13th Standard Parallel N.	Pidgeon & Hayden	36	March 25, 1915	5	74	92	Sept. 16, 1915 Sept. 17, 1915
Resurvey East Township Line	" "	"	"	5	78	31	July 9, 1915 Sept. 7, 1915
Resurvey South Township Line	" "	"	"	6	00	48	July 2, 1915 July 15, 1915
Resurvey West Township Line	" "	"	"	5	70	02	May 27, 1915 July 1, 1915

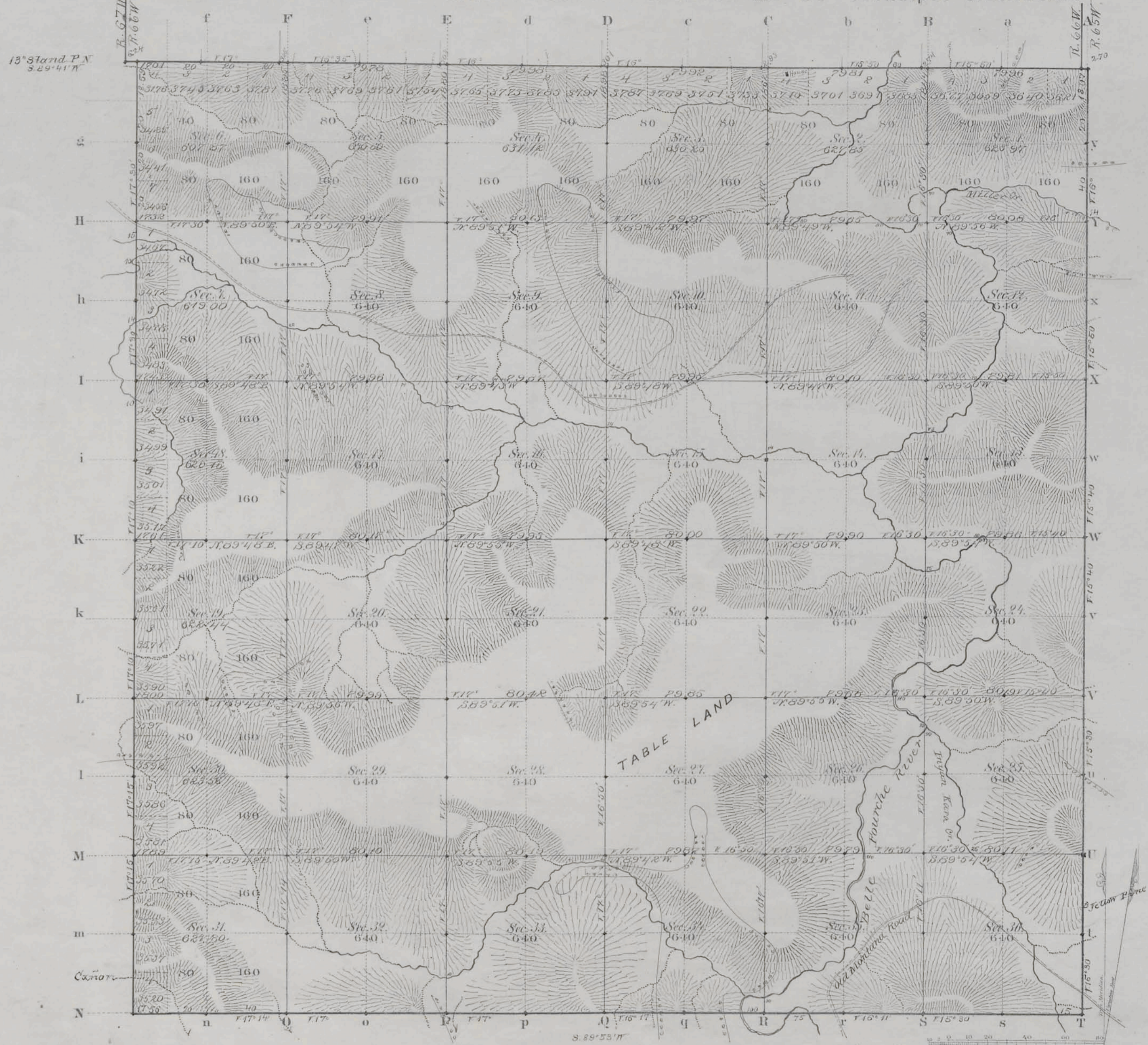
The above map of Township No. 52 North Range No. 66 West of the Sixth Principal Meridian Wyoming is strictly conformable to the field notes of the survey thereof on file in this office, which have been examined and approved
 U.S. Surveyor General's Office.
 Cheyenne Wyoming May 12, 1917
Charles L. Decker
 Surveyor General.

1651-A

52-66
Drawn to Soudance
Apr. 24, 1918

2279-

TOWNSHIP N^o 52 NORTH, RANGE N^o 66 WEST of the 6th Principal MERIDIAN.



Total number of Acres 22,860.62

Surveys Designated	By Whom Surveyed	Date of Contract	Amount of Survey M ² 75 95	When Surveyed	Magnetic Declination
N. & B. Township lines	W. F. Benson	July 19, 1882	11 75 95	Aug. 22 & 24, 1882	15° 25' East
Subdivisions	"	"	59 61 58	Nov. 24-Dec. 2, 1882	17°
Connections	"	"	14 96	"	"
S. Township L.	S. A. Hanson	"	5 77 56	Aug. 28, 1882	"
18" Stand. P. N.	W. F. Benson	"	5 76 46	Aug. 19, 1882	"

The above Map of Township No. 52 North Range No. 66 West of the Sixth Principal Meridian Wyoming Territory is strictly conformable to the field notes of the survey thereof on file in this Office, which have been examined and approved

Surveyor General's Office, *Edw. C. David* Secy.
Cheyenne Wyoming
August 24th 1883

(22)
Indexed

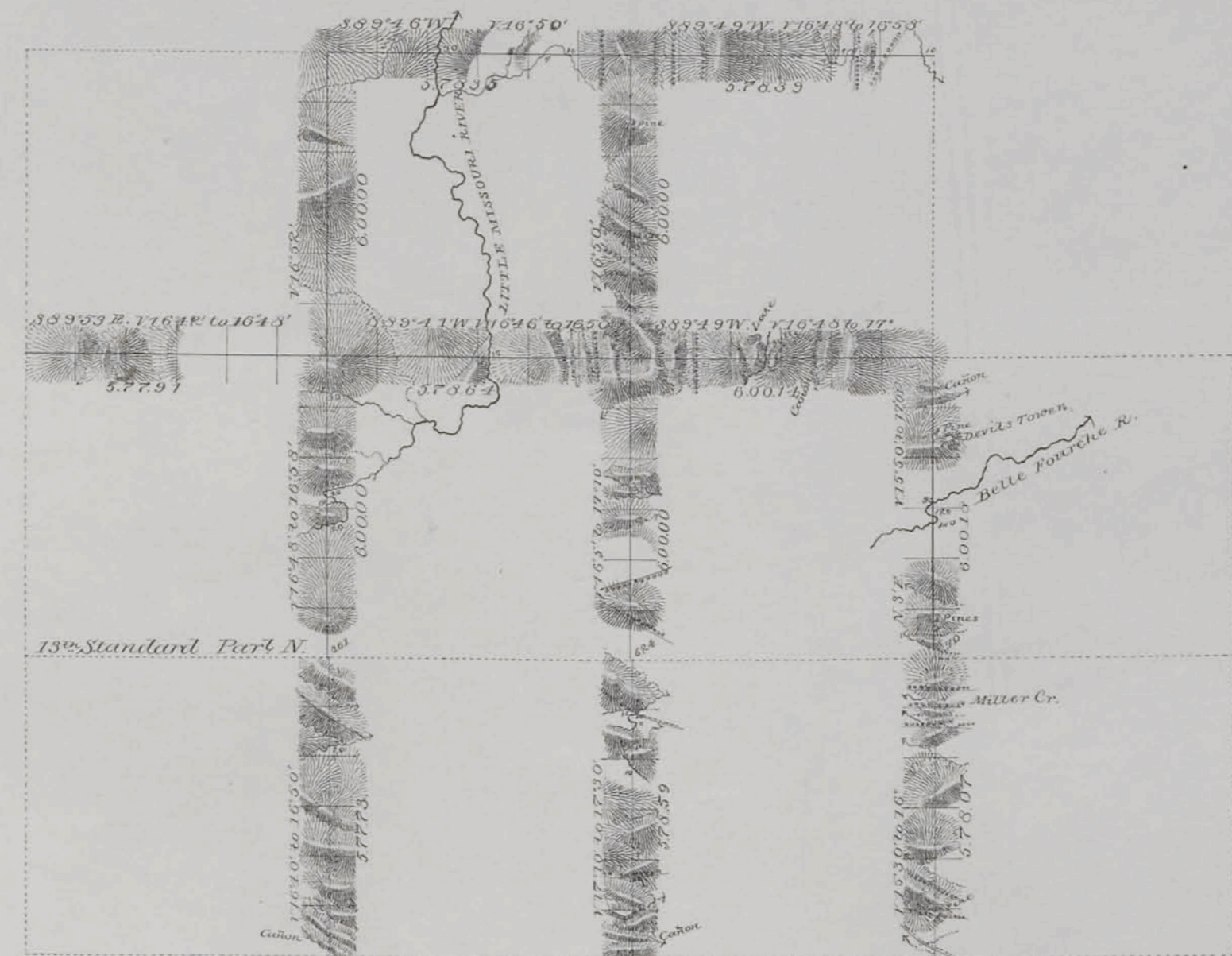
2312

21

EXTERIOR LINES

Magnetic Variation East

Scale 3 Miles to 1 inch



T. 54 N.

T. 53 N.

T. 52 N.

R. 68 W. R. 67 W. R. 66 W. R. 65 W.

Surveys Designated	By Whom Surveyed	Date of Contract	Amount of Surveys			When Surveyed
			M ^s	C ^s	L ^s	
Exterior lines	W. F. Benson	July 19 th 1882	87	68	00	Aug 22-Sept 18 1882
Connections	"	"	17	55		" " "

I hereby certify that the above diagram of the Exterior Lines of Townships 52, 53 & 54 North, Ranges 66 & 67 West, Townships 53 and 54 North, Range 68 W. is strictly conformable to the field notes of the survey thereof on file in this Office, which have been examined and approved

Surveyor General's Office
Cheyenne Wyoming
August 24th 1883

Edw. C. David
Sur. Gen.