

T. 56 1/2 N., R. 68 W., Sixth Principal Meridian, Wyoming, Field Note Links

Plat Accession Number(s)	Year(s) of Survey	Township Subdivision Plats
4938	1917	https://www.wy.blm.gov/cadastral/countyplats/crook/fieldnotes/t56.5nr68w_gp038fn.pdf
4938	1917	https://www.wy.blm.gov/cadastral/countyplats/crook/fieldnotes/t56.5nr68w_gp038fn_bnd.pdf

Township N^o 56½ North Range N^o 68 West of the Sixth Principal Meridian, Wyoming

Survey accepted Oct 28, 1918 - G.L.O.

G f F e E d D c C b B a A

g

H

h

I

i

K

k

L

l

M

m

N

o

p

q

y

Y

x

X

w

W

v

V

u

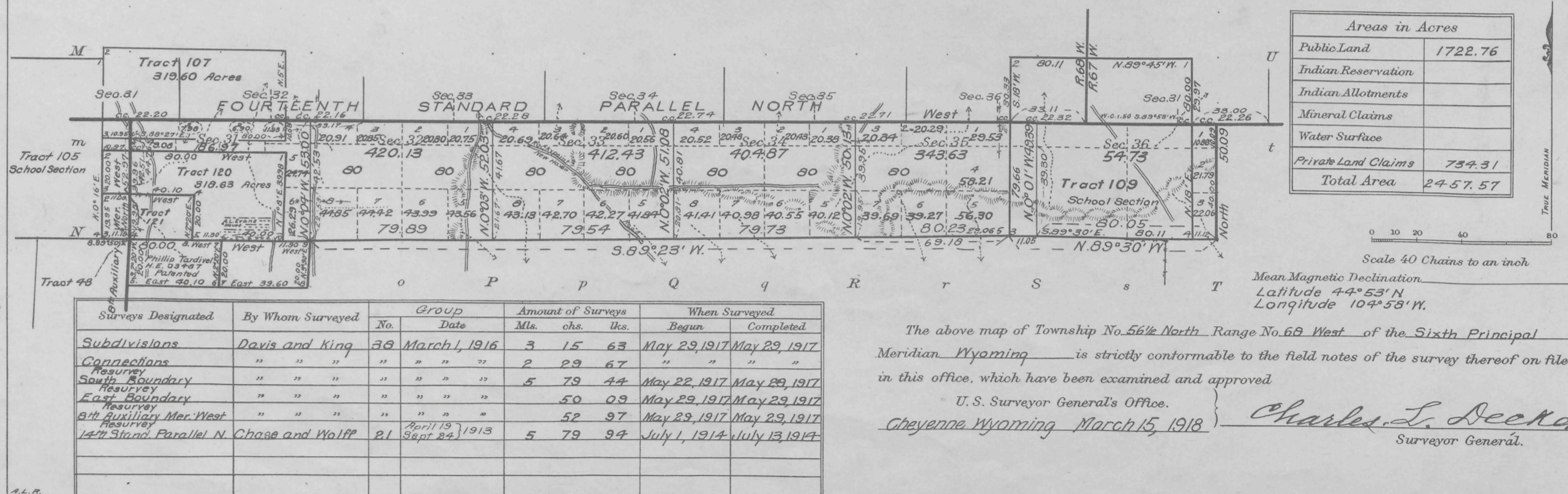
U

t

Index to Segregated Tracts										
Resurvey			Original Survey							
Tract N ^o	T.	R.	T.	R.	Sec.	Subdivisions	Entry		Status in Land Office	Entryman
							Kind	Number		
107	57	68	57	68	31	Lots 1, 2, E ² NW ⁴ , NE ⁴	H.E.	08710	Intact	Eva Claire Thomas
109	"	"	"	"	36	All	S.S.		Approved	Wyoming
120	"	"	"	"	31	Lot 3, NE ⁴ SW ⁴ , SE ⁴	H.E.	04783	F.C. Issued	Albert L. Evans
121	"	"	56	68	6	Lots 1 and 2	H.E.	04783	F.C. Issued	Albert L. Evans
			57	"	31	Lot 4, SE ⁴ SW ⁴	H.E.	03487	Patented	Phillip Tardivil
			56	"	6	Lots 3 and 4	H.E.	03487	Patented	Phillip Tardivil

All tract segregations shown hereon represent the position and form of said tracts under the original description as referred to the original survey; located as such on the ground according to the best available evidence of their true position.

See Supplemental Plat N^o 3, T. 57 N., R. 68 W. for designations and areas of lots in Tracts 107 and 120



Areas in Acres	
Public Land	1722.76
Indian Reservation	
Indian Allotments	
Mineral Claims	
Water Surface	
Private Land Claims	734.31
Total Area	2457.57

Surveys Designated	By Whom Surveyed	No.	Date	Amount of Surveys			When Surveyed	
				Mls.	chs.	Ucs.	Begun	Completed
Subdivisions	Davis and King	38	March 1, 1916	3	15	63	May 29, 1917	May 29, 1917
Connections	" " "	"	" " "	2	29	67	" " "	" " "
South Boundary	" " "	"	" " "	5	79	44	May 22, 1917	May 29, 1917
East Boundary	" " "	"	" " "		50	09	May 29, 1917	May 29, 1917
6th Auxiliary Mer. West	" " "	"	" " "		52	97	May 29, 1917	May 29, 1917
14th Stand. Parallel N.	Chase and Wolff	21	April 15, 1913 Sept 24, 1913	5	79	94	July 1, 1914	July 13, 1914

The above map of Township No. 56½ North Range No. 68 West of the Sixth Principal Meridian Wyoming is strictly conformable to the field notes of the survey thereof on file in this office, which have been examined and approved

U. S. Surveyor General's Office.
Cheyenne Wyoming March 15, 1918

Charles L. Decker
Surveyor General.

Triplicate copy sent to Land Office Dec-31, 1918.