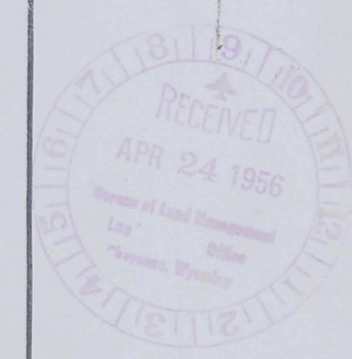


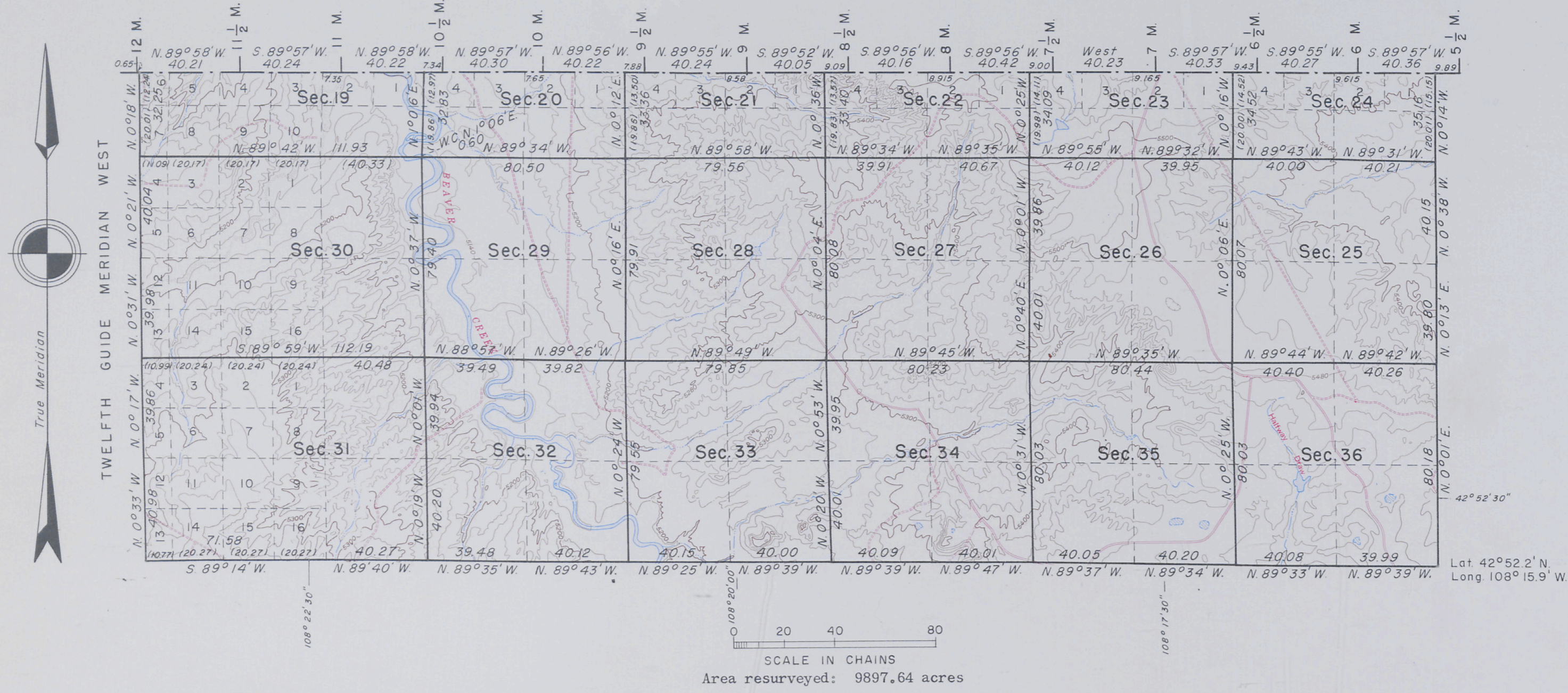
## T. 34 N., R. 96 W., Sixth Principal Meridian, Wyoming, Field Note Links

Plat Accession Number(s)	Year(s) of Survey	
		Township Subdivision Plats
6658	1952	<a href="https://www.wy.blm.gov/cadastral/countyplats/fremont/fieldnotes/t34nr96w_gp207fn.pdf">https://www.wy.blm.gov/cadastral/countyplats/fremont/fieldnotes/t34nr96w_gp207fn.pdf</a>
4581	1892	<a href="https://www.wy.blm.gov/cadastral/countyplats/fremont/fieldnotes/t34nr96w_c249fn.pdf">https://www.wy.blm.gov/cadastral/countyplats/fremont/fieldnotes/t34nr96w_c249fn.pdf</a>
		Township Exterior Plats
4583	1892	<a href="https://www.wy.blm.gov/cadastral/countyplats/fremont/fieldnotes/ext2676.pdf">https://www.wy.blm.gov/cadastral/countyplats/fremont/fieldnotes/ext2676.pdf</a>
517	1882; 1884	<a href="https://www.wy.blm.gov/cadastral/countyplats/sweetwater/fieldnotes/retext0442.pdf">https://www.wy.blm.gov/cadastral/countyplats/sweetwater/fieldnotes/retext0442.pdf</a>
517	1877	<a href="https://www.wy.blm.gov/cadastral/countyplats/sweetwater/fieldnotes/ext0517.pdf">https://www.wy.blm.gov/cadastral/countyplats/sweetwater/fieldnotes/ext0517.pdf</a>

# TOWNSHIP 34 NORTH, RANGE 96 WEST OF THE SIXTH PRINCIPAL MERIDIAN, WYOMING DEPENDENT RESURVEY



SHOSHONE INDIAN RESERVATION



This plat represents a retracement and reestablishment of the South and East boundaries, a portion of the South boundary of the Shoshone Indian Reservation, and the subdivisional lines, designed to restore the corners in their original locations according to the best available evidence. The lottings and areas are as shown on the plat approved June 8, 1893.

Resurvey was executed by Russell C. MacDonald November 4 to 18, 1952, under special instructions dated May 5, 1945 for Group 207, Wyoming.

Resurvey of West boundary by R. C. MacDonald in 1952.

Topographic mapping and reproduction by the U. S. Geological Survey from portions of Arapahoe, Arapahoe NE, Nine Mile Hill and Bringolf Ranch quadrangles.

UNITED STATES DEPARTMENT OF THE INTERIOR  
BUREAU OF LAND MANAGEMENT  
Washington, D. C. December 13, 1955

This plat is strictly conformable to the approved field notes, and the survey, having been correctly executed in accordance with the requirements of law and the regulations of this Bureau, is hereby accepted.

For the Director

*Earl G. Harrington*  
Cadastral Engineering Staff Officer

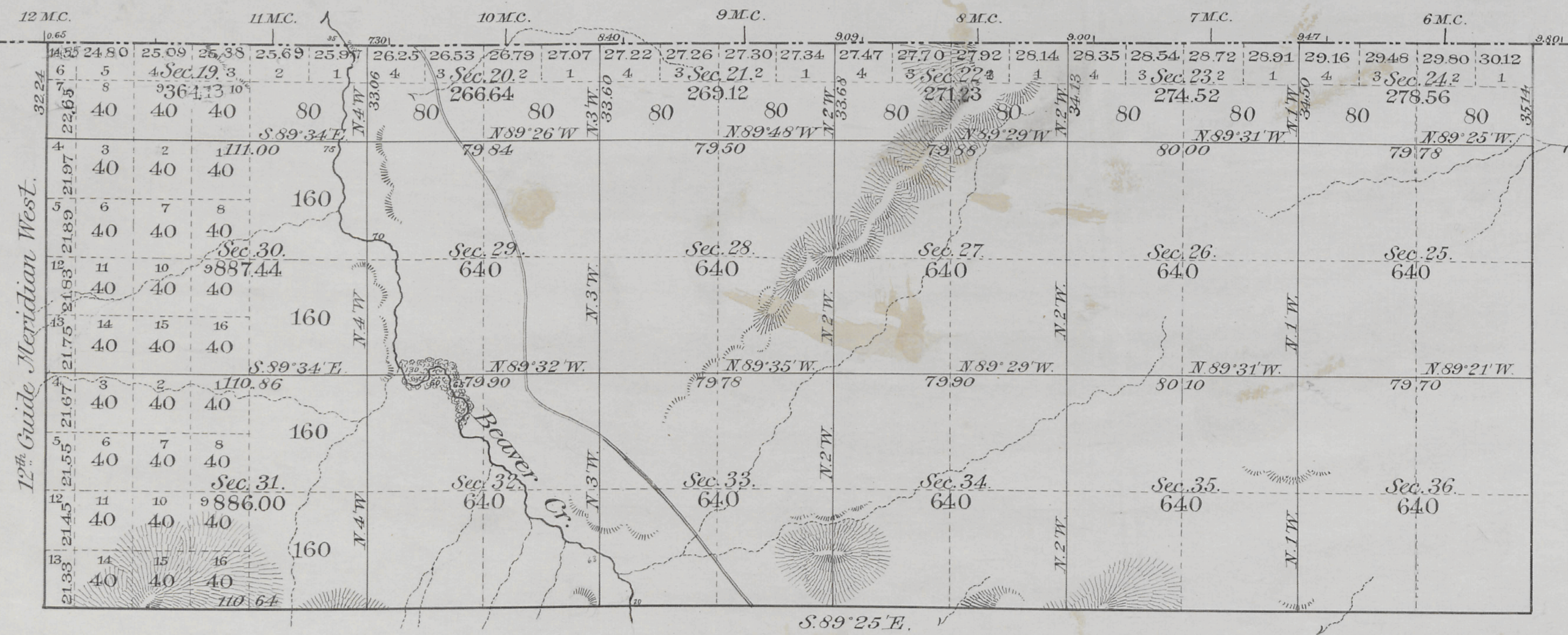
M.L.L.

*Orig. B*

4581

Township No 34 North, Range No 96 West of the 6<sup>th</sup> Principal Meridian.

WIND RIVER OR SHOSHONE INDIAN RESERVATION.



*On in. reported by guide found in 44. from paper on 11 line no. 26*

*Resurvey by G. H. Brodrick bet. secs. 27-28 33-34, Aug. 16, 1890*

Subdivision lines at intermediate rates 0<sup>m</sup> 18<sup>ds</sup> 00<sup>cs</sup>  
 " " " " 24<sup>m</sup> 51<sup>ds</sup> 21<sup>cs</sup>  
 Connection " " " " 0<sup>m</sup> 43<sup>ds</sup> 31<sup>cs</sup>

Total number of Acres, 9897.64

Surveys Designated.	By Whom Surveyed.	Date of Contract.	Amount of Surveys.			When Surveyed.	Magnetic Declination.
			Ac.	00 <sup>cs</sup>	10 <sup>ds</sup>		
Subdivisions	Coleman & Gilcrest	Sept. 2 <sup>d</sup> 1892	24	69	21	Sept 22-24, 1892	16° 50' East.
Connections	" " "	" " "		43	31	" " "	" " "

The above map of fractional Township 34 North, Range 96 West of the 6<sup>th</sup> Principal Meridian, Wyoming, is strictly conformable to the field notes of survey thereof on file in this office, which have been examined and approved.  
 U. S. Surveyor General's Office,  
 Cheyenne, Wyoming,  
 June 4<sup>th</sup> 1893.

*Wm A. Richards*  
 U. S. Surveyor General.

2674

Index

Original

# EXTERIOR LINES.

Scale 2 miles to 1 inch. Magnetic Variation East.

WIND RIVER  
OR  
SHOSHONE INDIAN  
RESERVATION.

T.36 N.  
R.95 W.

T.35 N.  
R.95 W.

T.34 N.  
R.97 W.

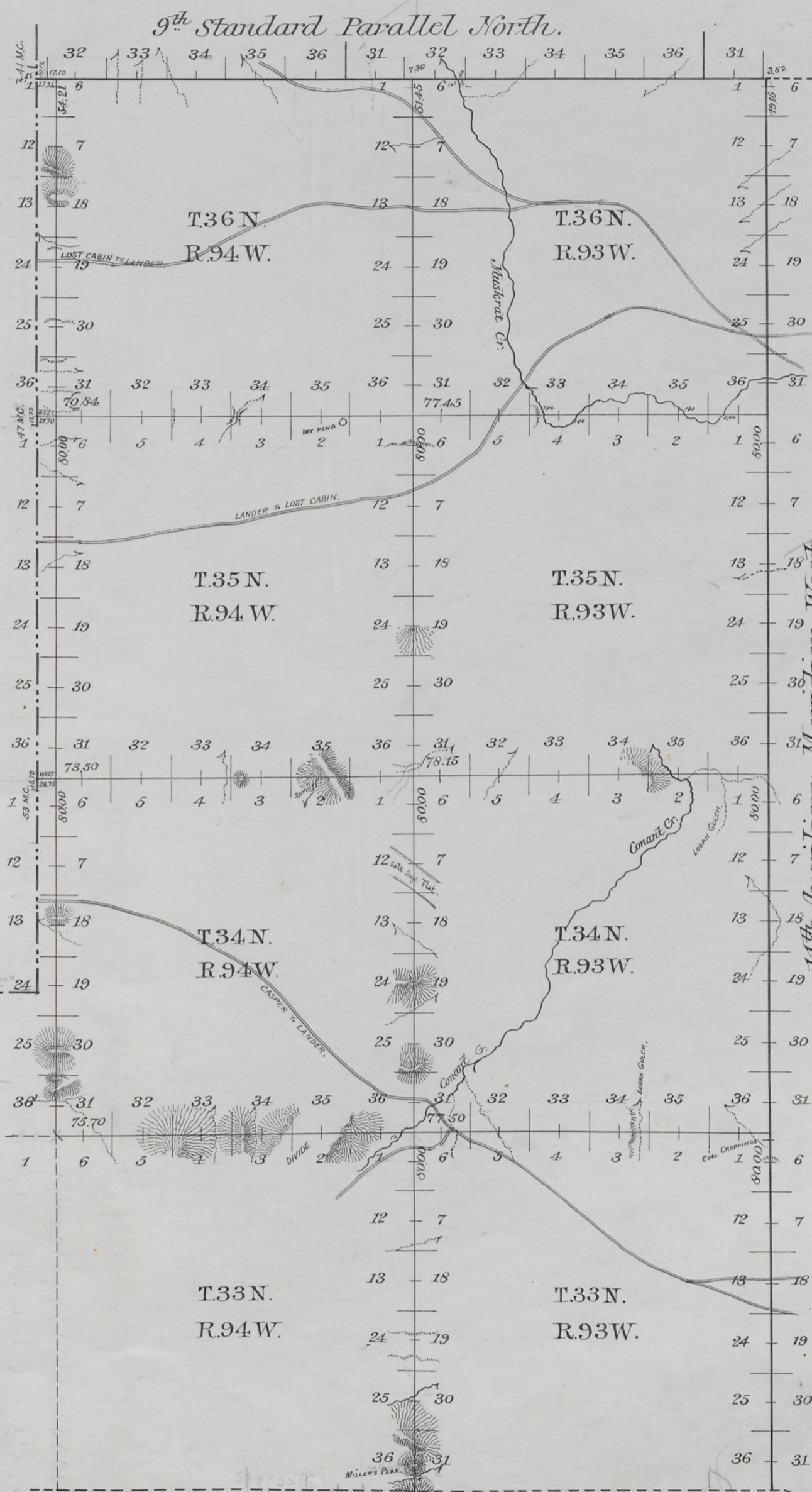
T.34 N.  
R.96 W.

T.34 N.  
R.95 W.

T.33 N.  
R.94 W.

T.33 N.  
R.93 W.

9 <sup>th</sup> Stand. Par <sup>l</sup> N. at intermediate rates.	00 <sup>mils.</sup>	00 <sup>chs.</sup>	00 <sup>ins.</sup>
" " " minimum	11 "	10 "	16 "
11 <sup>th</sup> Auxils Mer W. " intermediate	00 "	00 "	00 "
" " " minimum	23 "	49 "	16 "
12 <sup>th</sup> Guide " " intermediate	00 "	00 "	00 "
" " " minimum	2 "	32 "	24 "
Township lines " intermediate	6 "	62 "	50 "
" " " minimum	73 "	25 "	59 "



Surveys Designated.	By Whom Surveyed.	Date of Contract.	Amount of Surveys.			When Surveyed.	Magnetic Declination.
			Mls.	Chs.	Lks.		
9 <sup>th</sup> Stand. Par <sup>l</sup> N.	Coleman & Gilcrest	Sept 2, 1892.	11	10	16	Oct. 11-12, 1892	16° 55' East.
11 <sup>th</sup> Auxils Mer W.	" "	" "	23	49	16	Sep <sup>r</sup> 25-26, "	16° 45' "
12 <sup>th</sup> Guide Mer W.	" "	" "	2	32	24	Sep <sup>r</sup> 19, "	16° 47' "
Township Lines.	" "	" "	80	08	39	Sep. 30-Oct. 24, 1892	16° 47' - 17° 00' East.

The above diagram of the Exterior lines of Townships 33, 34, 35 and 36 North, Ranges 93 and 94 West, fractional Townships 34, 35 and 36 North, Range 95 West and fractional Townships 34 North, Ranges 96 and 97 West, of the 6<sup>th</sup> Principal Meridian, Wyoming, is strictly conformable to the field notes of survey thereof on file in this office, which have been examined and approved.

U.S. Surveyor General's Office,  
Cheyenne, Wyoming,  
Jan. 8<sup>th</sup> 1893.

*J. S. Richards*  
U.S. Surveyor General.

