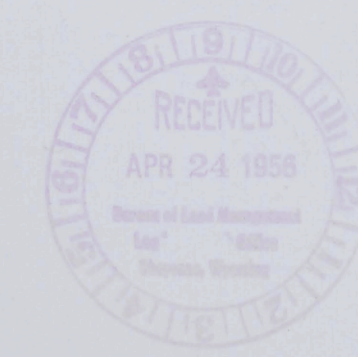


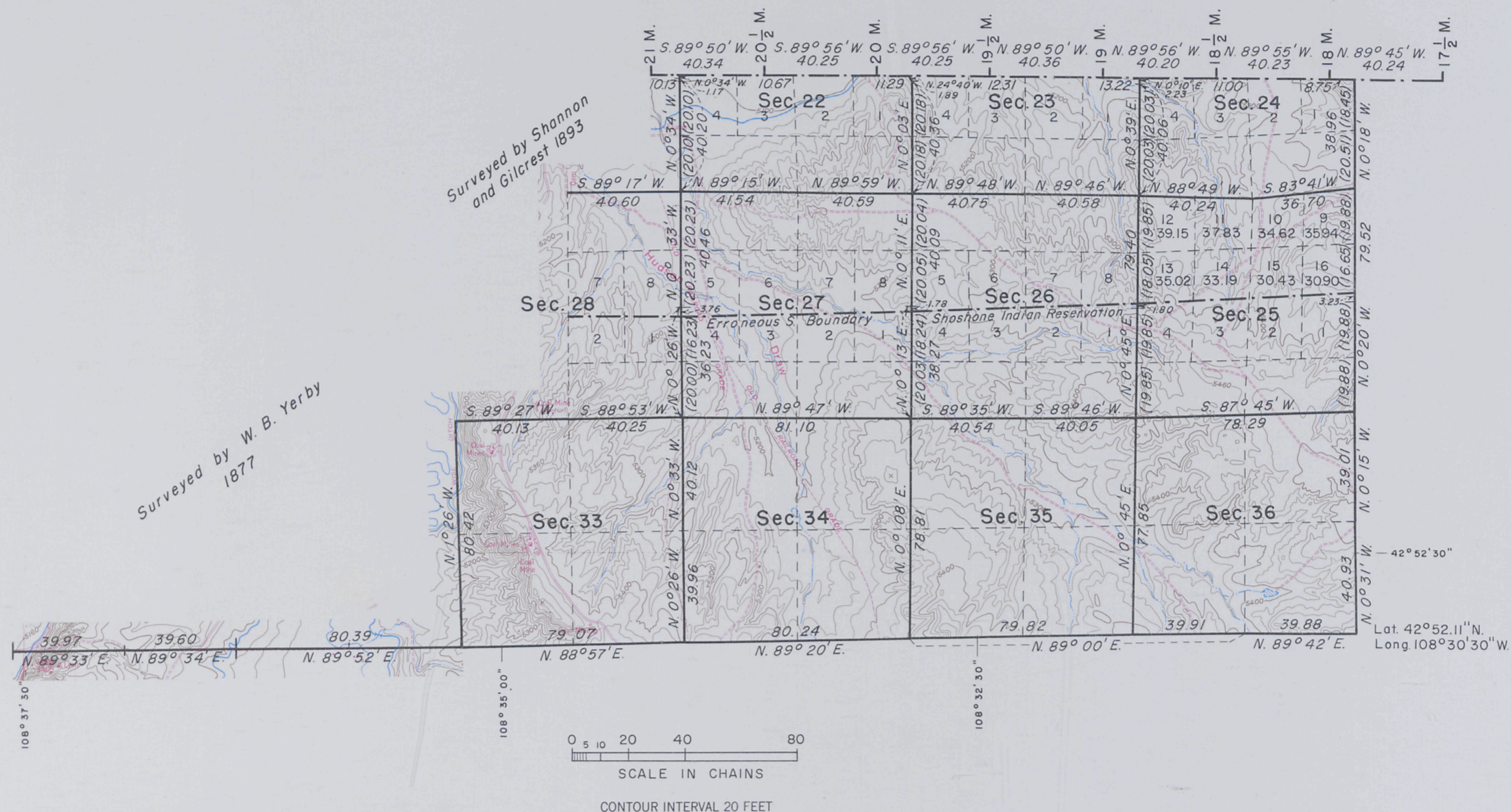
## T. 34 N., R. 98 W., Sixth Principal Meridian, Wyoming, Field Note Links

Plat Accession Number(s)	Year(s) of Survey	
		Township Subdivision Plats
6661	1952	<a href="https://www.wy.blm.gov/cadastral/countyplats/fremont/fieldnotes/t34nr98w_gp207fn.pdf">https://www.wy.blm.gov/cadastral/countyplats/fremont/fieldnotes/t34nr98w_gp207fn.pdf</a>
541	1893	<a href="https://www.wy.blm.gov/cadastral/countyplats/fremont/fieldnotes/t34nr98w_c253fn.pdf">https://www.wy.blm.gov/cadastral/countyplats/fremont/fieldnotes/t34nr98w_c253fn.pdf</a>
539	1877	<a href="https://www.wy.blm.gov/cadastral/countyplats/fremont/fieldnotes/t34nr98w_c090fn.pdf">https://www.wy.blm.gov/cadastral/countyplats/fremont/fieldnotes/t34nr98w_c090fn.pdf</a>
		Township Exterior Plats
534	1883; 1884	<a href="https://www.wy.blm.gov/cadastral/countyplats/fremont/fieldnotes/retext0452.pdf">https://www.wy.blm.gov/cadastral/countyplats/fremont/fieldnotes/retext0452.pdf</a>
534	1877	<a href="https://www.wy.blm.gov/cadastral/countyplats/fremont/fieldnotes/ext0534.pdf">https://www.wy.blm.gov/cadastral/countyplats/fremont/fieldnotes/ext0534.pdf</a>

# TOWNSHIP 34 NORTH, RANGE 98 WEST OF THE SIXTH PRINCIPAL MERIDIAN, WYOMING DEPENDENT RESURVEY



SHOSHONE INDIAN RESERVATION



Surveyed by W. B. Yerby  
1877

Surveyed by Shannon  
and Gilcrest 1893

This plat represents a retracement and re-establishment of a portion of the South and East boundaries and a portion of the subdivisional lines and a portion of the Shoshone Indian Reservation boundary through Range 98 West, designed to restore the corners in their original locations according to the best available evidence. The lottings and areas are as shown on the plats approved November 23, 1877 and April 15, 1895, except as new lottings are shown hereon.

Resurvey executed by Russell C. MacDonald from June 3 to July 8, 1952 under special instructions dated May 5, 1945 for Group 207, Wyoming.

Topographic mapping and reproduction by the U. S. Geological Survey from portions of Hudson, Lander, Lander SE and Lander NW quadrangles.

Area resurveyed: 5762.50 acres

UNITED STATES DEPARTMENT OF THE INTERIOR  
BUREAU OF LAND MANAGEMENT  
Washington, D. C. December 13, 1955

This plat is strictly conformable to the approved field notes, and the survey, having been correctly executed in accordance with the requirements of law and the regulations of this Bureau, is hereby accepted.

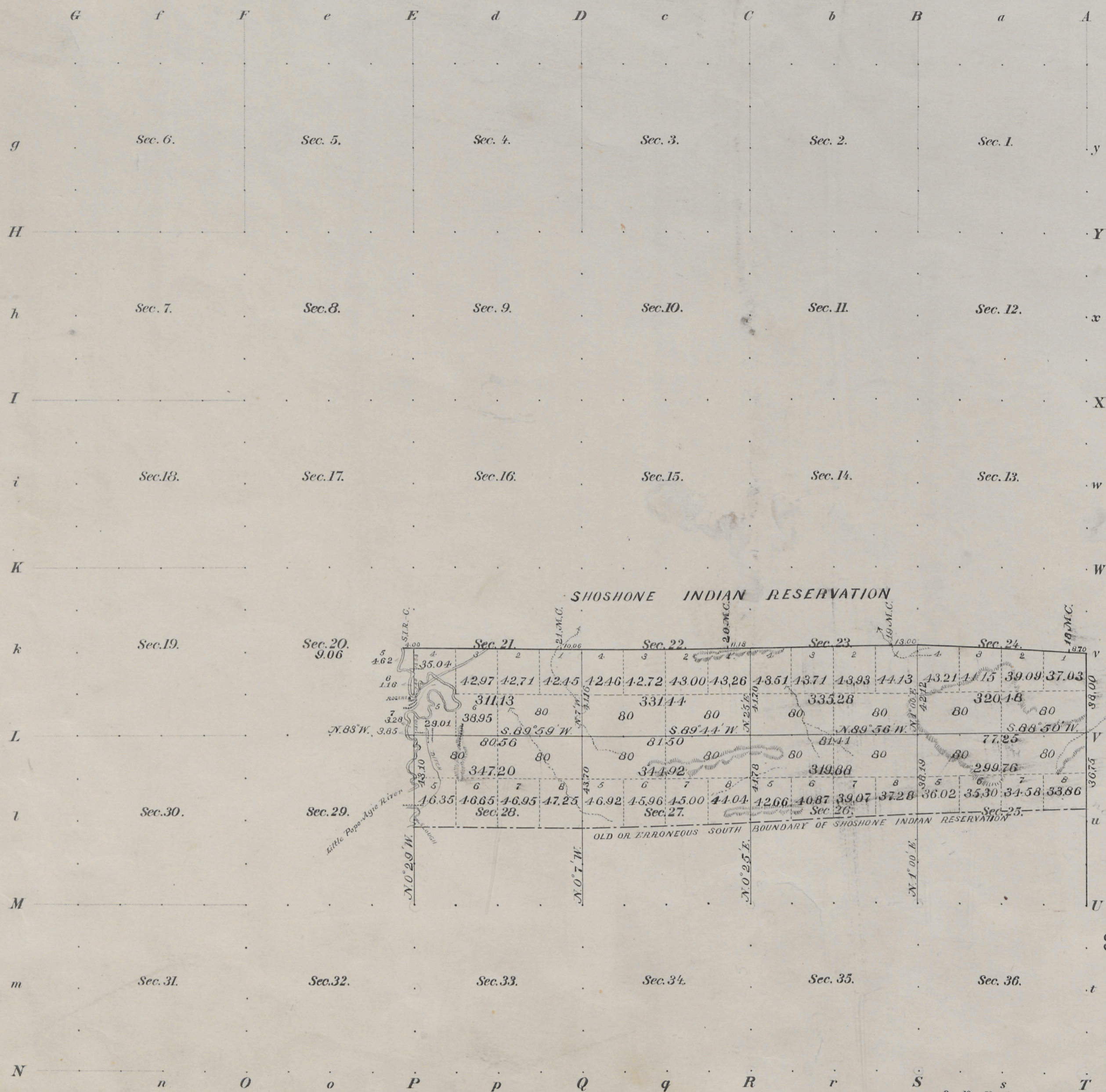
For the Director

*Earl S. Harrington*

Cadastral Engineering Staff Officer

541

# Township N<sup>o</sup> 34 North Range N<sup>o</sup> 98 West of the 6<sup>th</sup> Principal Meridian



Meanders of								
Posts	Courses	Ch <sup>2</sup> Lk <sup>2</sup>	Posts	Courses	Ch <sup>2</sup> Lk <sup>2</sup>	Posts	Courses	Ch <sup>2</sup> Lk <sup>2</sup>

Total number of Acres 2619.15

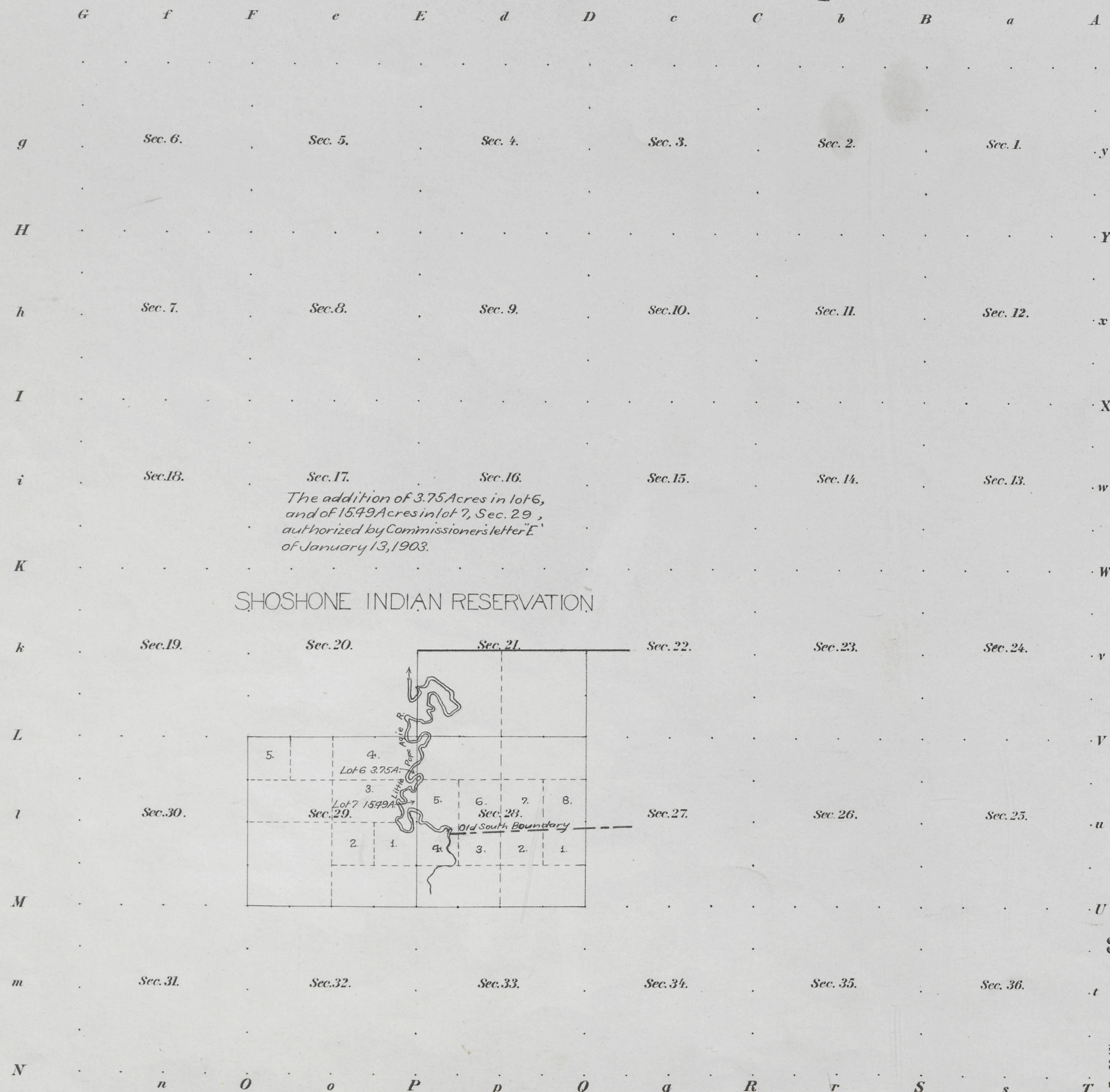
Surveys Designated	By Whom Surveyed	Date of Contract	Amount of Surveys M. Ch <sup>2</sup> Lk <sup>2</sup>	When Surveyed	Magnetic Declination
Township lines	W <sup>m</sup> B. Yerby	April 2, 1877		August 1877	
Subdivisions	Shannon & Gilcrest	February 21, 1893	8 18 00	Aug. 7-11, 1893	16° 41' East
Connections	" "	" "	0 33 24	" "	" "
Boundary Reservation	Frank S. Wood	Decem. 15, 1886		April 2-19, 1887	

corrected  
The above map of Township N<sup>o</sup> 34 North of Range N<sup>o</sup> 98 West of the 6<sup>th</sup> Principal Meridian, State of Wyoming, is strictly conformable to the field notes of the survey thereof on file in this Office, which has been examined and approved.  
Surveyor General's Office,  
Cheyenne, Wyoming, April 15, 1895.  
Corrected as authorized by Letter E, dated March 29, 1895.

*John Charles Thompson*  
Sur.<sup>r</sup> Gen.

540

Supplemental Plat  
Township N<sup>o</sup> 34 North, Range N<sup>o</sup> 98 West of the 6<sup>th</sup> Principal Meridian



The addition of 3.75 Acres in lot 6,  
and of 15.49 Acres in lot 7, Sec. 29,  
authorized by Commissioners letter "E"  
of January 13, 1903.

SHOSHONE INDIAN RESERVATION

Total number of Acres 1224

Surveys Designated	By Whom Surveyed	Date of Contract	Amount of Surveys		When Surveyed
			M	Ch <sup>s</sup> Lk <sup>s</sup>	
Township lines					
Subdivisions					

Supplemental  
The above Map of Township N. 34 North, of Range N. 98 West of the  
6<sup>th</sup> Principal Meridian, Wyoming is strictly conformable to the field  
notes of the survey thereof on file in this Office, which have been examined and approved,  
and is made under instructions contained in Commissioner's letter "E" of Jan. 13, 1903.  
Surveyor General's Office. *Alpheus W. Tarran*  
Cheyenne, Wyo., March 3, 1903. *Sur. Gen.*

Meanders of								
Posts	Courses	Ch <sup>s</sup> Lk <sup>s</sup>	Posts	Courses	Ch <sup>s</sup> Lk <sup>s</sup>	Posts	Courses	Ch <sup>s</sup> Lk <sup>s</sup>

456

456A

456

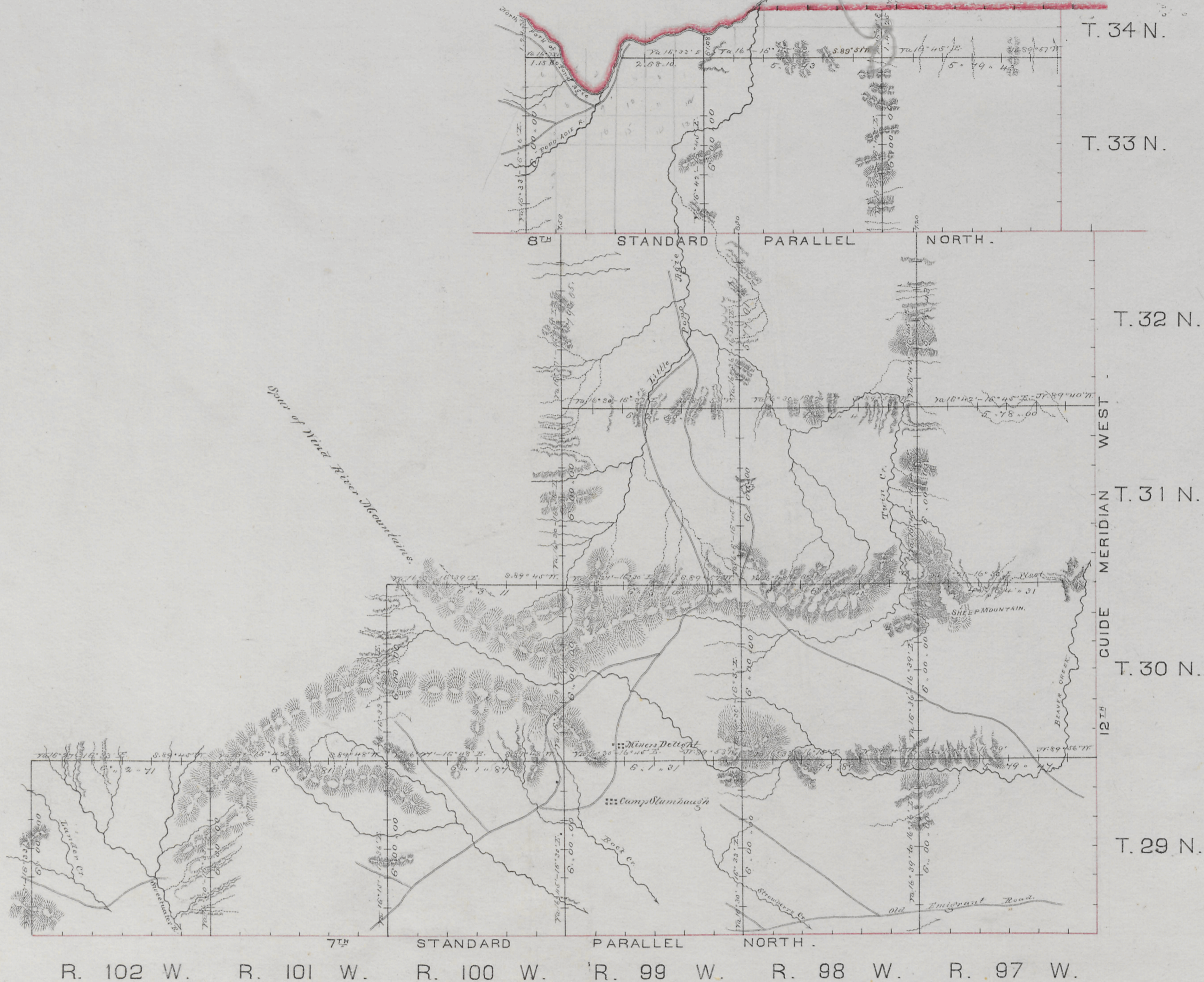
34-98  
Supplemental plat approved by the Hon. Commissioner  
in his letter "E" dated Apr. 10, 1903.  
Triplicate plat forwarded to Shoshone Land Office  
April 13, 1903.



W. L. Phelps

# EXTERIOR LINES.

SHOSHONE INDIAN RESERVATION



R. 102 W. R. 101 W. R. 100 W. R. 99 W. R. 98 W. R. 97 W.

Survey Designated	By Whom Surveyed	Date of Contract	Amount of Survey	When Surveyed
Township Lines	William B. Yerby	April 2 <sup>nd</sup> 1877	210 Chs 24	June - Aug. 1877
Connections	"	"	60 " 91	"

I hereby certify that the above Diagram of the Exterior lines of Townships 29, 30, 31, 32, 33 and 34 North, Ranges 97, 98 and 99 West, Townships 29 and 30 North, Range 100 West, and Townships 29 North, Ranges 101 and 102, all West of the 6<sup>th</sup> Principal Meridian, in Wyoming Territory, is strictly conformable to the field notes of the survey thereof on file in this Office, which have been examined and approved.

Surveyor General's Office.  
Cheyenne Wyo. Sept. 25<sup>th</sup> 1877.

*Edw. C. David*  
"Sur. Gen."