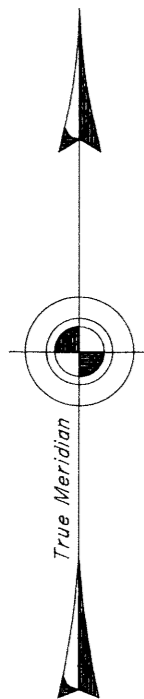


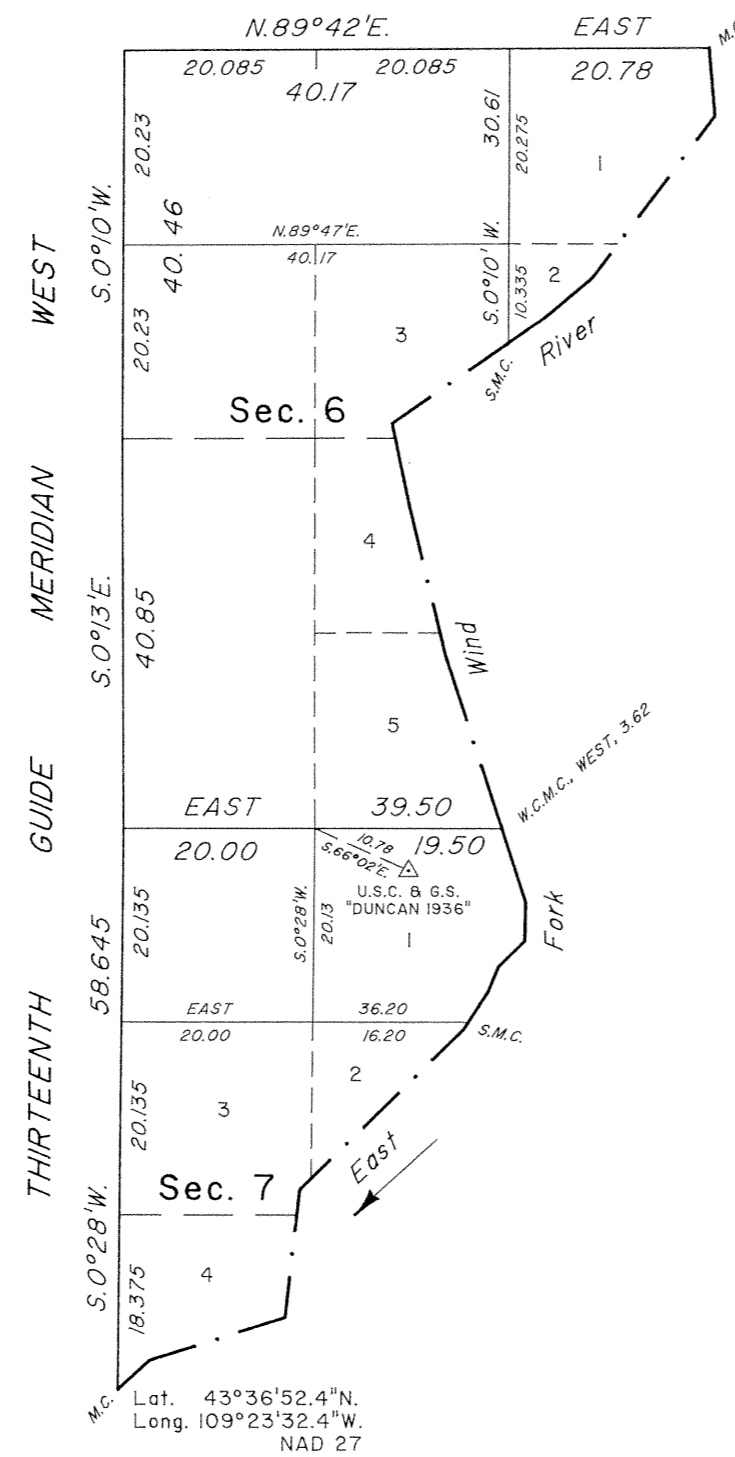
T. 42 N., R. 104 W., Sixth Principal Meridian, Wyoming, Field Note Links

Plat Accession Number(s)	Year(s) of Survey	
		Township Subdivision Plats
7953	1990	https://www.wy.blm.gov/cadastral/countyplats/fremont/fieldnotes/t42nr104w_gp542fn.pdf
4389	1891	https://www.wy.blm.gov/cadastral/countyplats/fremont/fieldnotes/t42nr104w_c241fn.pdf
		Township Exterior Plats
4372	1891	https://www.wy.blm.gov/cadastral/countyplats/hotsprings/fieldnotes/ext2534.pdf

TOWNSHIP 42 NORTH, RANGE 104 WEST, OF THE SIXTH PRINCIPAL MERIDIAN, WYOMING.
DEPENDENT RESURVEY AND SUBDIVISION OF SECTIONS



Mean magnetic declination
14 1/2° E.



WIND RIVER MERIDIAN
T. 7 N., R. 5 W.

ADJUSTED MEANDERS - RIGHT BANK
EAST FORK WIND RIVER

M.C. Sec. 7 (upstream)	
N.47°19'E.	4.53
N.72°11'E.	14.86
N.6°20'E.	13.49
N.45°34'E.	23.86
N.32°54'E.	0.94
S.M.C. Sec. 7	
N.32°54'E.	3.79
N.22°14'E.	2.82
N.45°49'E.	3.82
N.1°07'E.	4.025
N.18°01'W.	8.045
M.C. Secs. 6 and 7	
N.18°00'W.	18.965
N.13°33'W.	16.23
N.11°50'W.	8.93
N.55°18'E.	14.65
S.M.C. Sec. 6	
N.55°18'E.	4.915
N.49°51'E.	6.26
N.36°59'E.	21.045
N.4°56'W.	7.105
M.C. Secs. 6 and 31	

A history of surveys is contained in the field notes.

This plat represents the dependent resurvey of the Thirteenth Guide Meridian West, through T. 42 N., between Rs. 104 and 105 W., the north boundary, and the subdivisional lines, and the adjusted meander line of the right bank of the East Fork Wind River, designed to restore the corners in their true original locations according to the best available evidence, and the subdivision of sections 6 and 7, T. 42 N., R. 104 W., Sixth Principal Meridian, Wyoming.

The lottings and areas are as shown on the plat approved May 21, 1892.

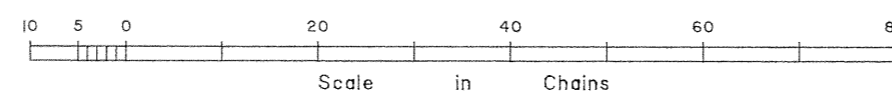
Survey executed by Anthony Mule', Cadastral Surveyor, beginning August 14, 1990, and completed September 10, 1990, pursuant to Special Instructions dated August 2, 1990, for Group No. 542, Wyoming.

UNITED STATES DEPARTMENT OF THE INTERIOR
BUREAU OF LAND MANAGEMENT

Cheyenne, Wyoming March 4, 1993

This plat is strictly conformable to the approved field notes, and the survey, having been correctly executed in accordance with the requirements of law and the regulations of this Bureau, is hereby accepted.

For the Director
John P. Lee
Chief Cadastral Surveyor for Wyoming

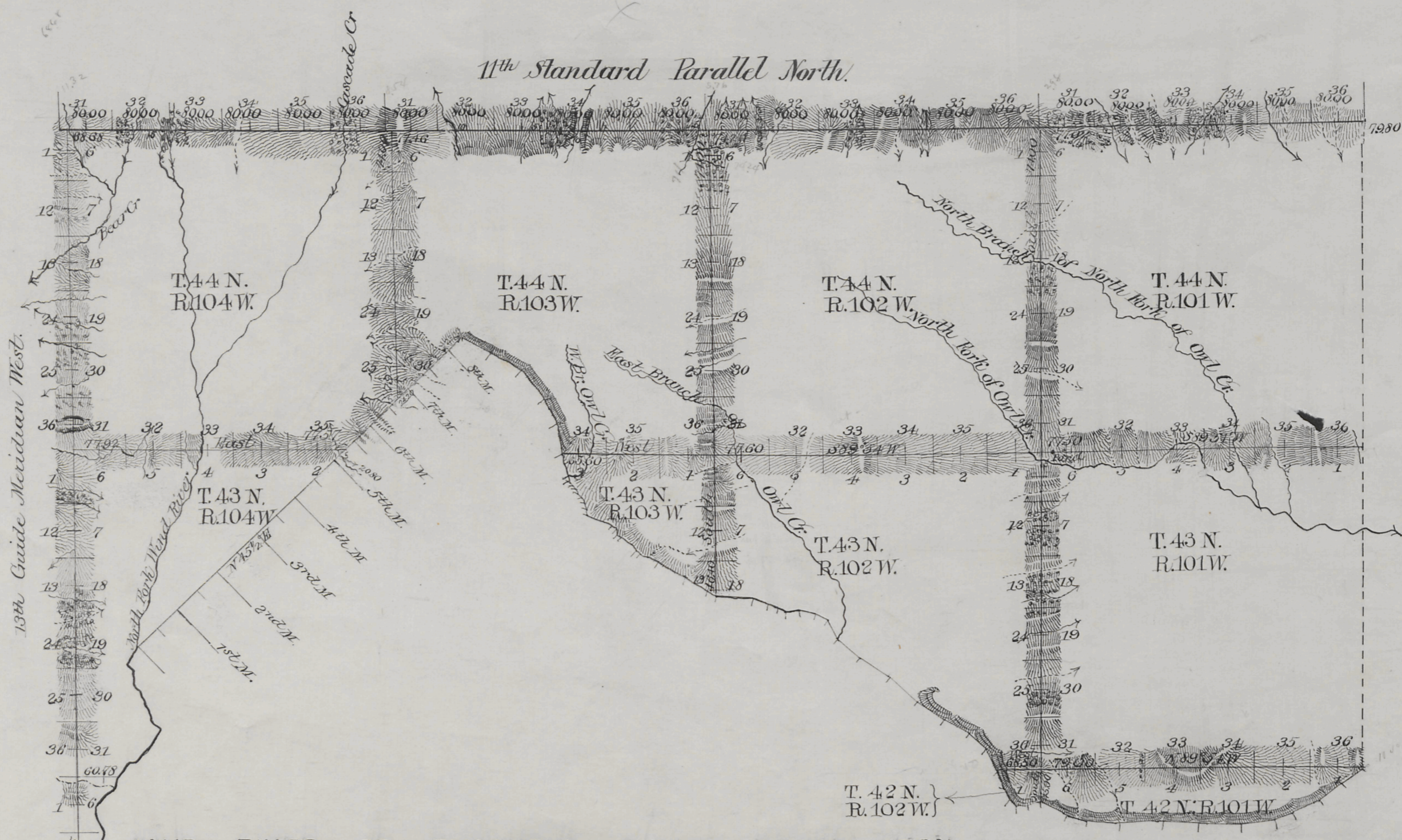


JAM

21
 4372

EXTERIOR LINES

Scale 1 inch = 2 miles. Mag. Var. East.



WIND RIVER OR SHOSHONE INDIAN RESERVATION

	M	CA ^s	LR ^s
Connection lines at intermediate rates	0	24	20
Standard "	35	44	00
" " " minimum "	2	08	25
Exterior " " intermediate "	49	06	89
" " " minimum "	4	10	18
Meander " " intermediate "	4	36	70
" " " minimum "	16	69	20
Boundary " " intermediate "	3	02	20

Surveys Designated	By Whom Surveyed	Date of Contract	Approval of Surveys	Date of Survey	Magnetic Decline
Connections	Carpenter & Warner	April 1 - 1891	24 20		
13th Guide Mer.	"	"	13 52 25	July 24 - 25 - 1891	17° 32' East
11th Standard Par.	"	"	24 00 00	July 19 - 23 - 1891	17° 41' East
Exteriors	"	"	53 17 07	Sept. 1 - 8 - 1891	17° 36' "
Meanders	"	"	21 25 20	Sept. 9 - 11 - 1891	17° 30' "
Boundary	"	"	3 02 20	Aug. 30 - 1891	17° 35' "

I hereby certify that the above diagram of the 13th Guide Meridian West in Townships 42, 43 and 44 North, the 11th Standard Parallel North in Ranges 101, 102, 103 and 104 West, the Exterior lines of Fractional Townships 42 North, Ranges 101, 102 and 104 West, Townships 43 North Range 101 West, Fractional Townships 43 North, Ranges 102, 103 and 104 West, Townships 44 North Ranges 101 and 102 West, Fractional Townships 44 North, Ranges 103 and 104 West; The Meander lines of Fractional Townships 42 North, Ranges 101 and 102 West, Fractional Townships 43 North Ranges 102 and 103 West, Fractional Township 44 North, Range 103 West; and the South West Boundary line of Fractional Township 44 North, Range 103 West, and the South East Boundary of Fractional Township 44 North, Range 104 West of the 6th Principal Meridian Wyoming, is strictly conformable to the field notes of the survey thereof which have been examined and approved.

Surveyor General's Office
 Cheyenne Wyo. May 27th 1892

Wm. A. Richards
 Surveyor General

2534