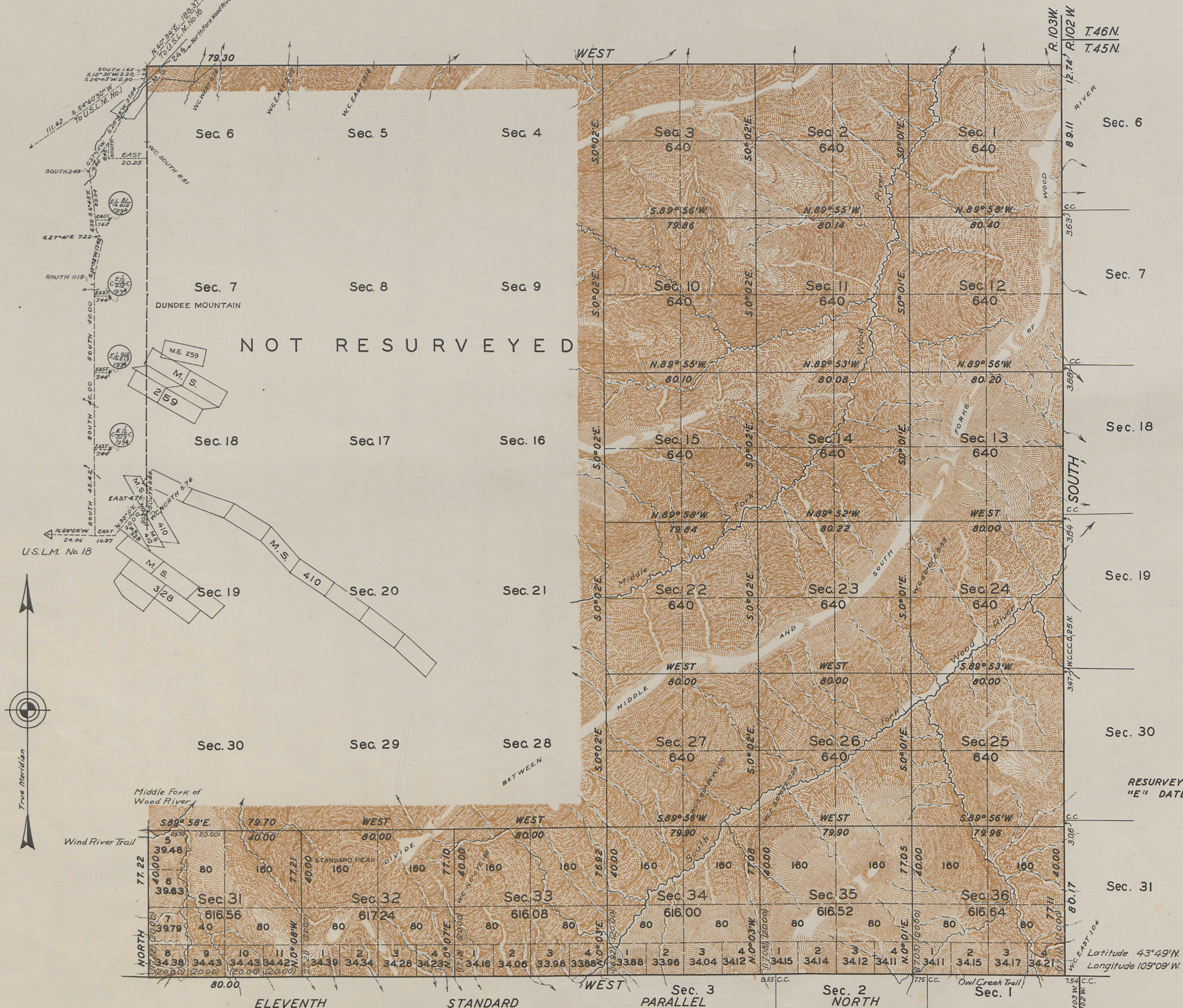


T. 45 N., R. 103 W., Sixth Principal Meridian, Wyoming, Field Note Links

Plat Accession Number(s)	Year(s) of Survey	
		Township Subdivision Plats
6152	1934	https://www.wy.blm.gov/cadastral/countyplats/fremont/fieldnotes/t45nr103w_gp035fn.pdf
6152	1934	https://www.wy.blm.gov/cadastral/countyplats/fremont/fieldnotes/t45nr103w_gp035fn_bnd.pdf
3244	1883	https://www.wy.blm.gov/cadastral/countyplats/fremont/fieldnotes/t45nr103w_c186fn.pdf
		Township Exterior Plats
4372	1891	https://www.wy.blm.gov/cadastral/countyplats/hotsprings/fieldnotes/ext2534.pdf
3253	1883	https://www.wy.blm.gov/cadastral/countyplats/hotsprings/fieldnotes/ext3253.pdf
3253	1883	https://www.wy.blm.gov/cadastral/countyplats/hotsprings/fieldnotes/retext2019.pdf
3254	1882	https://www.wy.blm.gov/cadastral/countyplats/hotsprings/fieldnotes/ext3254.pdf

TOWNSHIP N^o 45 NORTH, RANGE N^o 103 WEST OF THE SIXTH PRINCIPAL MERIDIAN, WYOMING. INDEPENDENT RESURVEY



RESURVEY AUTHORIZED BY COMMISSIONER'S LETTER "E" DATED JUNE 30, 1914.

SCALE: 40 CHAINS TO AN INCH

AREA RESURVEYED, 13,299.04 ACRES

LINES DESIGNATED	BY WHOM SURVEYED	GROUP		MILEAGE		WHEN SURVEYED	
		NO.	DATE	MLS.	CHS.	BEGUN	COMPLETED
E.W.&S. EXTERIOR	MARVIN J. LYTLE	35	MAR. 14, 1916	12	74.33	JULY 7, 1934	AUG. 14, 1934
NORTH EXTERIOR	CLYDE W. ATHERLY	"	"	5	79.30	JULY 9, 1934	JULY 28, 1934
CONNECTING	"	"	"	0	12.74	"	"
SUBDIVISIONAL	MARVIN J. LYTLE	"	"	37	65.66	"	AUG. 14, 1934

OFFICE OF THE SUPERVISOR OF SURVEYS
DENVER, COLORADO, MAY 29, 1937.
THE ABOVE PLAT OF TOWNSHIP NO. 45 NORTH, RANGE NO. 103 WEST OF THE SIXTH PRINCIPAL MERIDIAN, WYOMING, IS STRICTLY CONFORMABLE TO THE FIELD NOTES OF THE RESURVEY THEREOF WHICH HAVE BEEN EXAMINED AND APPROVED.

Wm. P. Johnson
SUPERVISOR OF SURVEYS

UNITED STATES
DEPARTMENT OF THE INTERIOR
GENERAL LAND OFFICE
WASHINGTON, D.C., FEBRUARY 11, 1938.
THE RESURVEY REPRESENTED BY THIS PLAT HAVING BEEN CORRECTLY EXECUTED IN ACCORDANCE WITH THE REQUIREMENTS OF LAW AND THE REGULATIONS OF THIS OFFICE IS HEREBY ACCEPTED.

Cartrivette Frank
ASSISTANT COMMISSIONER

2011-A

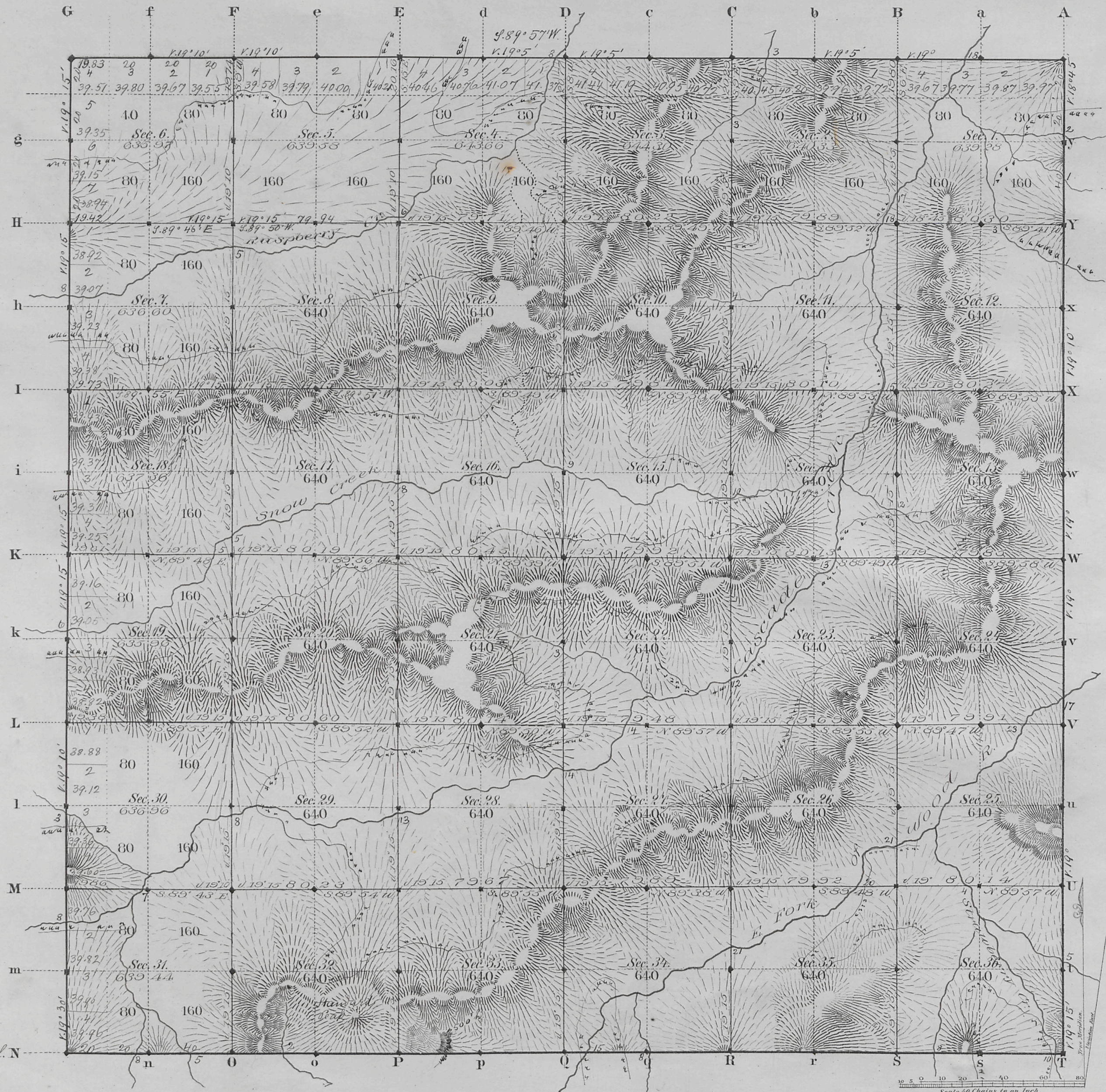
Drawn and filed to Cheyenne S.O. July 15, 1938.

45-103

AM
W.P. Johnson
7/15/38

3244

TOWNSHIP N^o 45 NORTH, RANGE N^o 103 WEST of the 6th Principal MERIDIAN.



11th Stand. Carl. N West 1.19.15'

Total number of Acres, 23029.44

Surveys Designated	By Whom Surveyed	Date of Contract	Amount of Survey M ^o C ^t L ^{ts}	When Surveyed	Magnetic Declination
E. W. of Township lines	W. J. Burcham	July 10, 1882	17 74 53	March 12, 22, 1883	19° 10' East
Subdivisions	"	"	59 78 99	June 7, 15, 1883	19° 15' "
Connections	"	"	"	"	"
W. Stand. Carl. N West	"	"	6 00 00	Nov. 5, 6, 1883	"

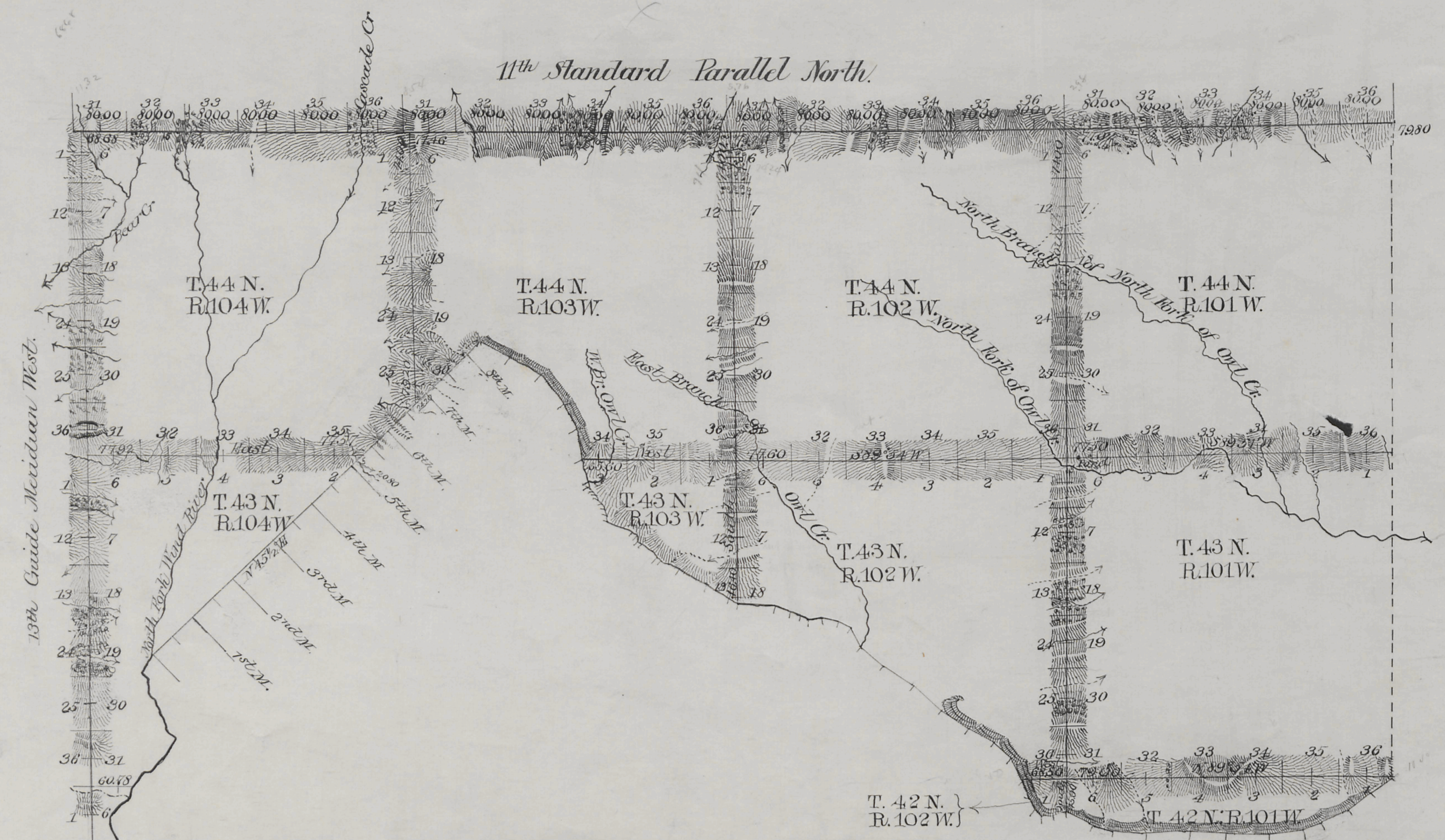
The above Map of Township No. 45 North, Range No. 103 West of the Sixth Principal Meridian Wyoming Territory is strictly conformable to the field notes of the survey thereof on file in this Office, which have been examined and approved

Surveyor General's Office, *Edw. C. Davis* Secy. Gen. Cheyenne Wyoming February 23rd 1884

21
 4372

EXTERIOR LINES

Scale 1 inch = 2 miles. Mag. Var. East.



WIND RIVER OR SHOSHONE INDIAN RESERVATION

	M	CA ^s	LR ^s
Connection lines at intermediate rates	0	24	20
Standard " " " "	35	44	00
" " " " minimum " "	2	08	25
Exterior " " " " intermediate " "	49	06	89
" " " " " " minimum " "	4	10	18
Meander " " " " " " intermediate " "	4	36	70
" " " " " " " " minimum " "	16	69	20
Boundary " " " " " " " " intermediate " "	3	02	20

Surveys Designated	By Whom Surveyed	Date of Contract	Approval of Surveys	Date of Survey	Magnetic Decline
Connections	Carpenter & Warner	April 1, 1891	24 20		
13th Guide Mer.	"	"	13 52 25	July 24-25-1891	17° 32' East
11th Standard Par.	"	"	24 00 00	July 19-23-1891	17° 41' East
Exteriors	"	"	53 17 07	Sept. 1-8-1891	17° 36' "
Meanders	"	"	21 25 20	Sept. 9-11-1891	17° 30' "
Boundary	"	"	3 02 20	Aug. 30-1891	17° 35' "

I hereby certify that the above diagram of the 13th Guide Meridian West in Townships 42, 43 and 44 North, the 11th Standard Parallel North in Ranges 101, 102, 103 and 104 West, the Exterior lines of Fractional Townships 42 North, Ranges 101, 102 and 104 West, Townships 43 North Range 101 West, Fractional Townships 43 North, Ranges 102, 103 and 104 West, Townships 44 North Ranges 101 and 102 West, Fractional Townships 44 North, Ranges 103 and 104 West; The Meander lines of Fractional Townships 42 North, Ranges 101 and 102 West, Fractional Townships 43 North Ranges 102 and 103 West, Fractional Township 44 North, Range 103 West; and the South West Boundary line of Fractional Township 44 North, Range 103 West, and the South East Boundary of Fractional Township 44 North, Range 104 West of the 6th Principal Meridian Wyoming, is strictly conformable to the field notes of the survey thereof which have been examined and approved.

Surveyor General's Office
 Cheyenne Wyo. May 27th 1892

Wm. A. Richards
 Surveyor General

2534

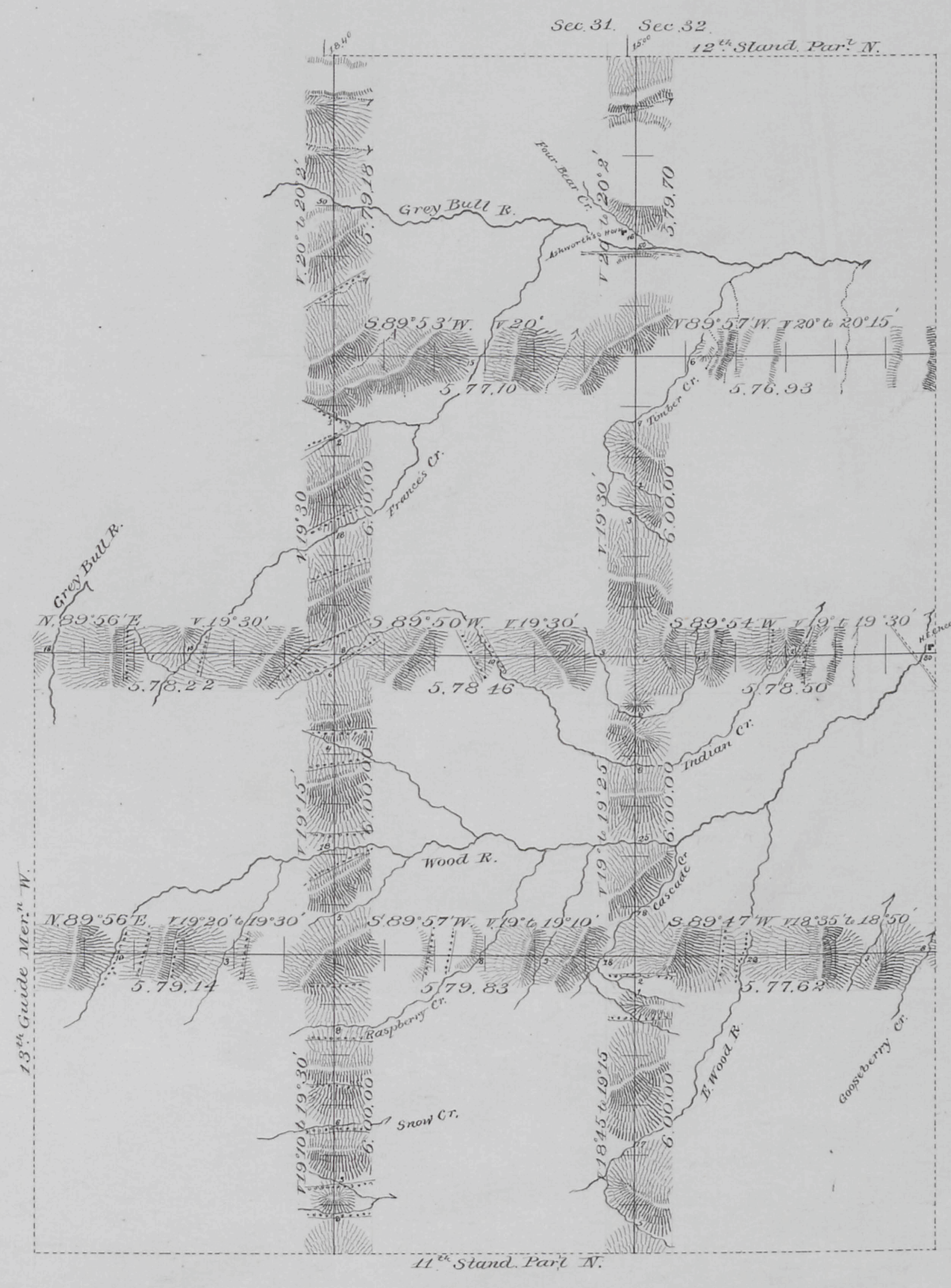
(25)
Indexed

3253

EXTERIOR LINES.

Scale 3 miles to 1 inch Magnetic Variation, East.

pd
KB
E



T. 48N.

T. 47N.

T. 46N.

T. 45N.

R. 104W.

R. 103W.

R. 102W.

Surveys Designated.	By Whom Surveyed	Date of Contract.	Amount of Surveys			When Surveyed.
			secs	cts	lks	
Exterior lines	N.J. Burnham	July 10 th 1882	95	64	68	March 12-29 1883
Connections	"	"	33	40	"	"

I hereby certify that the above diagram of the Exterior lines of Townships 45, 46, 47 & 48 N., R's 102 & 103 W., and Tps 45 & 46 N., R. 104 W. of the 6th P.M. Wyo. Ter. is strictly conformable to the field notes of the survey thereof on file in this office, which have been examined and approved.

Surveyor General's Office,
Cheyenne Wyoming February 23 1884

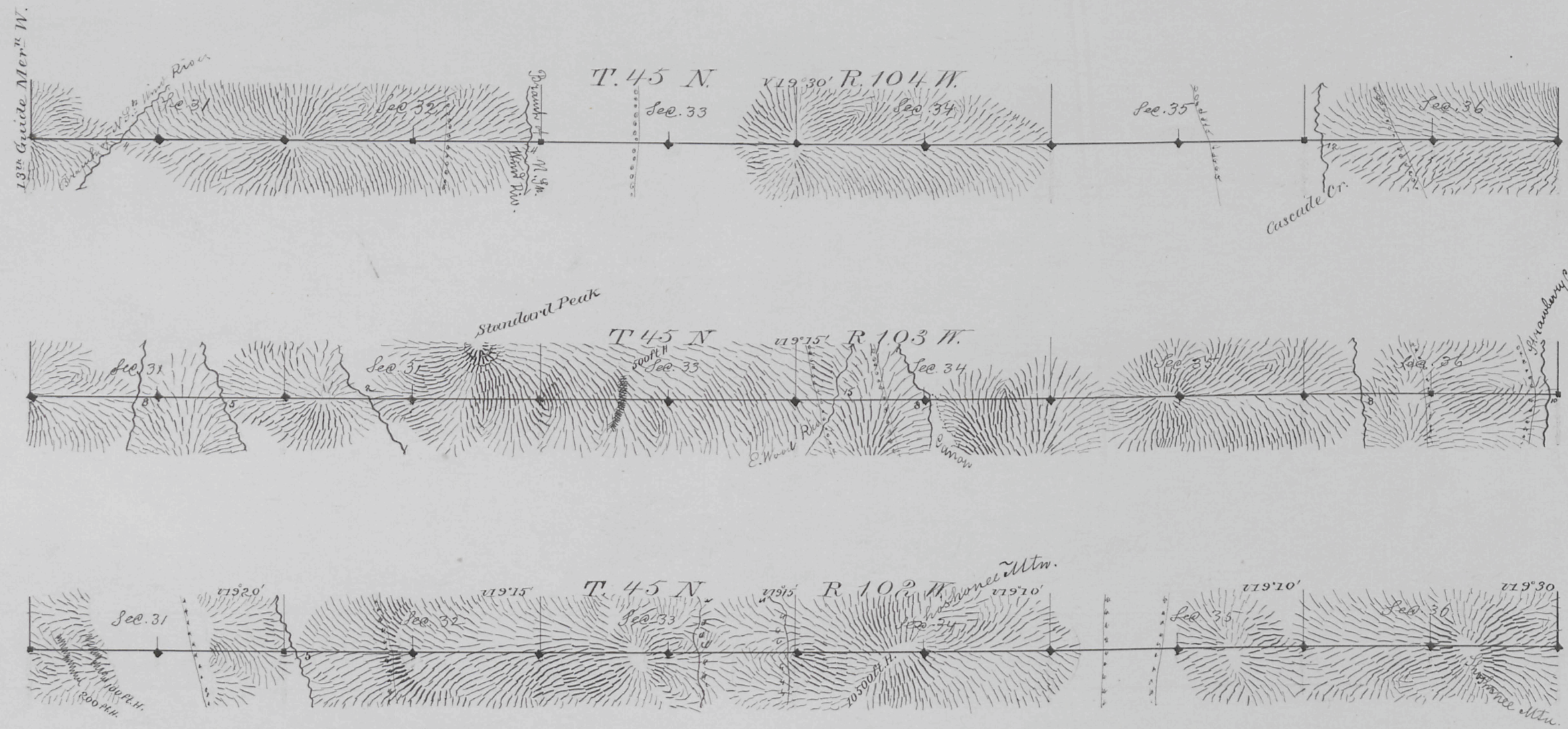
Edw. C. Davis
Surveyor General

(25)
Index

3254

11th STANDARD PARALLEL NORTH

Along the S. bdy of T^p. 45 N. R's 102, 103 & 104 W. of the 6th P.M. Wyoming Territory
Scale 40 Ch^s to 1 inch. Mag. Var. East.
Course West.



Survey Designated	By Whom Surveyed	Date of Contract	Amount of Survey			When Surveyed
			N ^{ts}	C ^{ts}	E ^{ts}	
11 th Stand. Par. N.	N. J. Barnham	July 10, 1882	78	0	0	March 5-7, 1883

The above diagram of the 11th Stand. Par. N. Along the S. bdy of T^p. 45 N. Ranges 102, 103 & 104 W. of the 6th P.M. Wyo. Ter. is strictly conformable to the field notes of the survey on file in this Office, which have been examined and approved.

Surveyor General's Office,
Cheyenne Wyo. Feb. 23, 1884.

Edw. C. Davis
Sur^r Gen.

