

T. 45 N., R. 108 W., Sixth Principal Meridian, Wyoming, Field Note Links

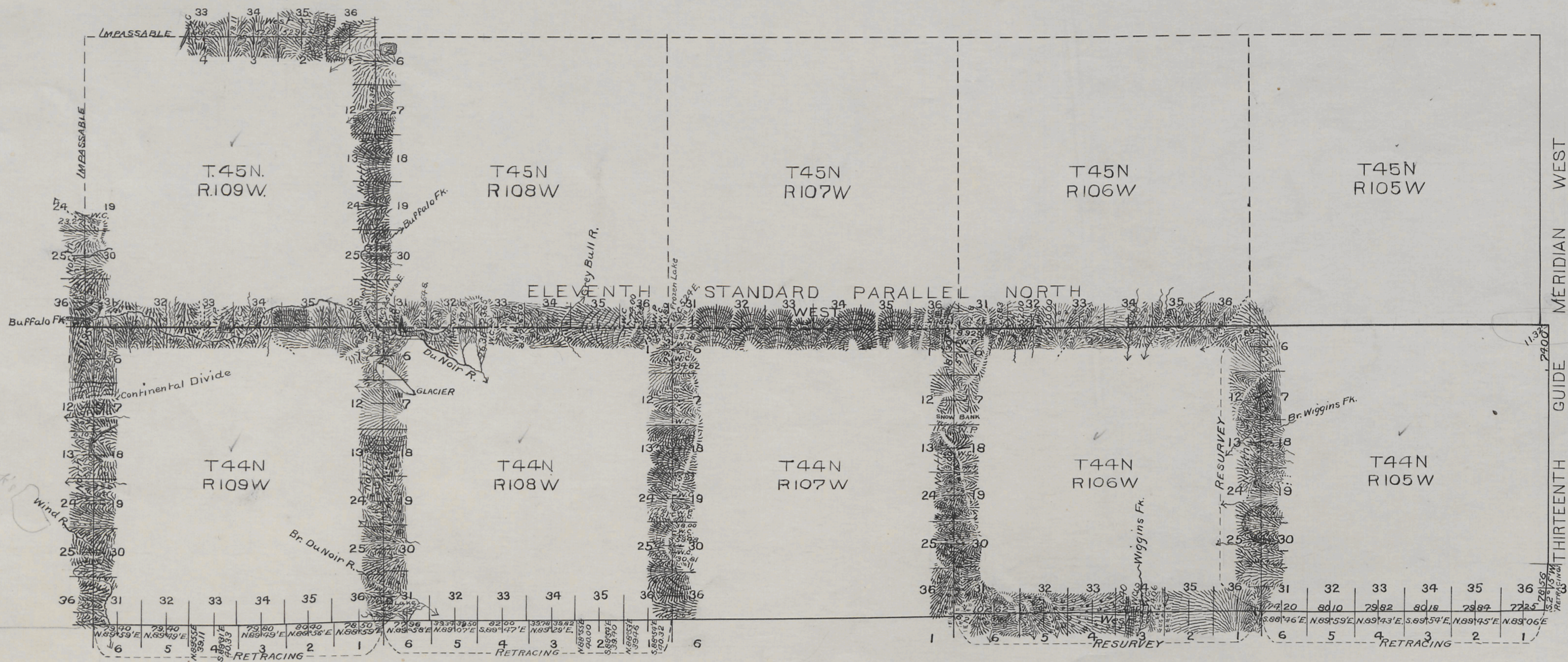
Plat Accession Number(s)	Year(s) of Survey	Township Exterior Plats
4704	1898	https://www.wy.blm.gov/cadastral/countyplats/fremont/fieldnotes/ext2781.pdf

Index

1704

TOWNSHIP EXTERIORS

Scale: 1 inch to 160 chs.



Branch
Lug

345
323

Latitude 43°45'N
Longitude 109°27'W
Mean Mag. Decl. 17°15'E

Table of Mileage

Lines Designated	Amount Mls. Chs. Lks.	When Surveyed
Standard lines	24 00 00	June 24-July 8, 1898
Township "	36 24 74	" 13-Aug. 10, "
Connecting "	34 82	July 16-29 "
Township " Resurveyed	12 17 86	" 12-14 "
Connecting " "	19 07	" " "

This Plat
of the
Eleventh Standard Parallel North, through Ranges 106, 107, 108 and 109 W.;
The West Boundaries of Townships 44 N., Ranges 106, 107, 108 and 109 W., and the
North, East and West Boundaries of Township 45 N., R. 109 W.;
The Resurvey of the East and South Boundaries of Township 44 N., Range 106 W.
and the Retracing of the South Boundaries of Townships 44 N., Ranges 105,
108 and 109 West of the 6th. Principal Meridian, Wyoming,
is strictly conformable to the field notes of the survey thereof;

by
Warner & Fink, U.S. Deputy Surveyors
under their
Contract No. 269, dated May 16, 1898
which have been examined, approved and filed in this office,
U.S. Surveyor General's Office,
Cheyenne, Wyoming,
August 3rd, 1899.

Alpheus C. Hanson
U.S. Surv. Gen'l.

Filed
MAR 12 1900
Comm. letter
Mch. 8-1900