

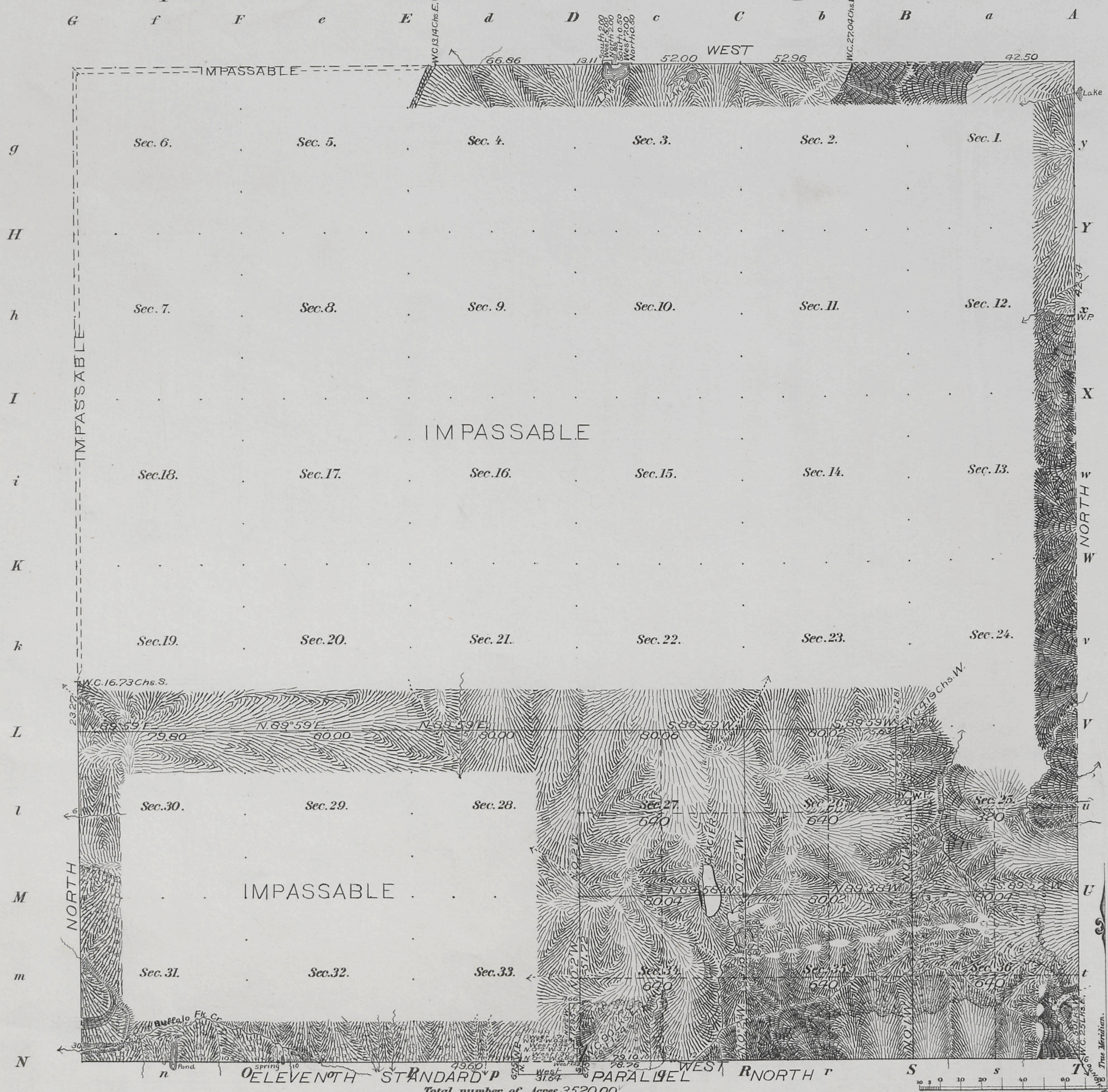
## T. 45 N., R. 109 W., Sixth Principal Meridian, Wyoming, Field Note Links

Plat Accession Number(s)	Year(s) of Survey	
		Township Subdivision Plats
4709	1898	<a href="https://www.wy.blm.gov/cadastral/countyplats/fremont/fieldnotes/t45nr109w_c269fn.pdf">https://www.wy.blm.gov/cadastral/countyplats/fremont/fieldnotes/t45nr109w_c269fn.pdf</a>
		Township Exterior Plats
4704	1898	<a href="https://www.wy.blm.gov/cadastral/countyplats/fremont/fieldnotes/ext2781.pdf">https://www.wy.blm.gov/cadastral/countyplats/fremont/fieldnotes/ext2781.pdf</a>



4709

Fractional Township N<sup>o</sup> 45 North, Range N<sup>o</sup> 109 West of the 6<sup>th</sup> Principal Meridian



Meanders of

Posts	Courses	Ch. <sup>2</sup> Lk. <sup>2</sup>	Posts	Courses	Ch. <sup>2</sup> Lk. <sup>2</sup>	Posts	Courses	Ch. <sup>2</sup> Lk. <sup>2</sup>

Latitude 43° 50' N  
Longitude 109° 56' W  
Mean Mag. Decl. 18° 00' E

Surveys Designated	By Whom Surveyed	Date of Contract No.	Amount of Surveys M. Ch. <sup>2</sup> Lk. <sup>2</sup>	When Surveyed
Township lines	Warner & Fink	269 May 16, 1898	13 10 13	July 8-Aug. 10, 1898
Subdivisions	"	" "	13 29 98	Aug. 11-18, "

Fractional Township N<sup>o</sup> 45 North, of Range N<sup>o</sup> 109 West of the 6<sup>th</sup> Principal Meridian, Wyoming is strictly conformable to the field notes of the survey thereof on file in this Office, which have been examined and approved.  
Surveyor General's Office, Cheyenne, Wyo. August 3, 1899  
*Alpheus D. Hanson*  
Sur. Gen.

Filed  
MAR 12 1900  
Down letter  
Mch 8-1900

2786 I.B.M.

THE NORRIS PETERS CO., LITHO., WASHINGTON, D. C.

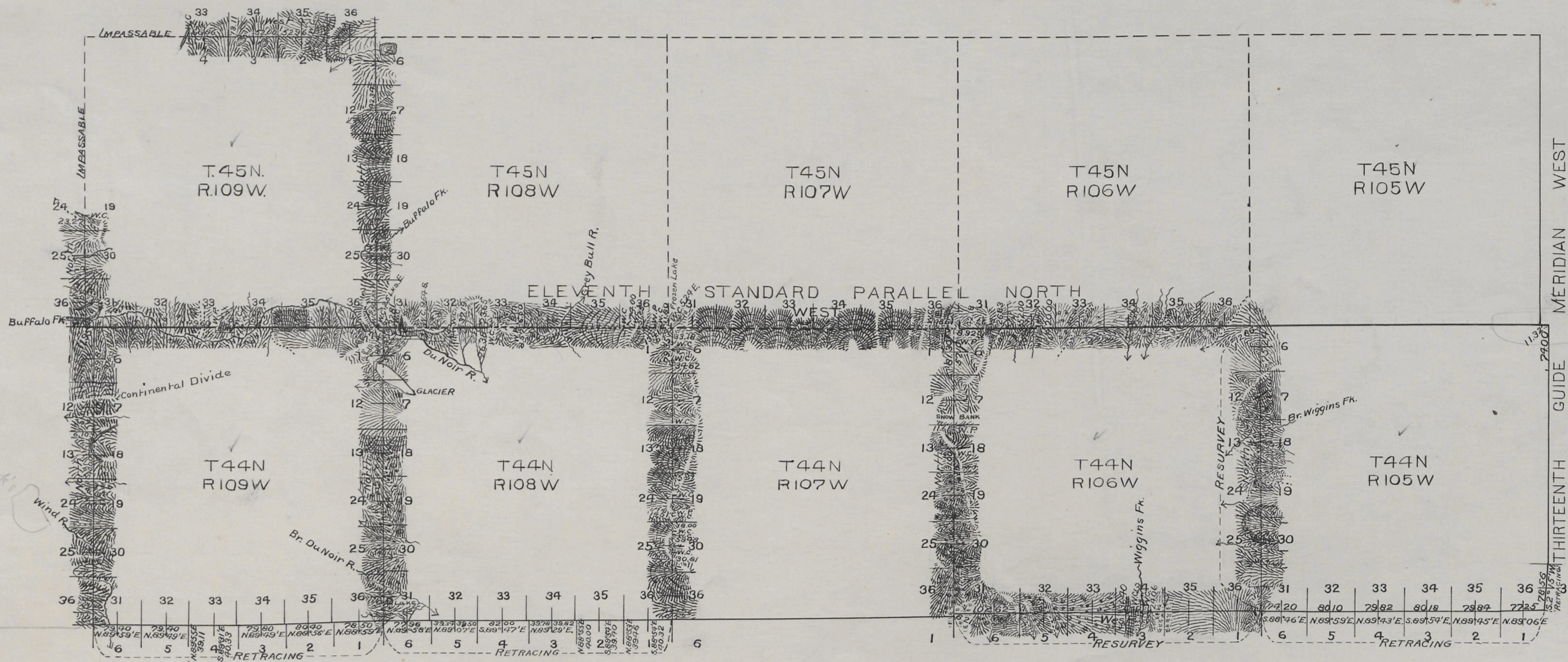


Index

1704

# TOWNSHIP EXTERIORS

Scale: 1 inch to 160 chs.



Branch  
Lug

345  
323

Latitude 43°45'N  
Longitude 109°27'W  
Mean Mag. Decl. 17°15'E

Table of Mileage

Lines Designated	Amount Mls. Chs. Lks.	When Surveyed
Standard lines	24 00 00	June 24-July 8, 1898
Township "	36 24 74	" 13-Aug. 10, "
Connecting "	34 82	July 16-29 "
Township " Resurveyed	12 17 86	" 12-14 "
Connecting " "	19 07	" " "

This Plat of the Eleventh Standard Parallel North, through Ranges 106, 107, 108 and 109 W.; The West Boundaries of Townships 44 N., Ranges 106, 107, 108 and 109 W., and the North, East and West Boundaries of Township 45 N., R. 109 W.; The Resurvey of the East and South Boundaries of Township 44 N., Range 106 W. and the Retracing of the South Boundaries of Townships 44 N., Ranges 105, 108 and 109 West of the 6th. Principal Meridian, Wyoming, is strictly conformable to the field notes of the survey thereof;

by  
Warner & Fink, U.S. Deputy Surveyors  
under their  
Contract No. 269, dated May 16, 1898  
which have been examined, approved and filed in this office,  
U.S. Surveyor General's Office,  
Cheyenne, Wyoming,  
August 3rd, 1899.

*Alpheus C. Hanson*  
U.S. Surv. Gen'l.

Filed  
MAR 12 1900  
Comm. letter  
Mch. 8-1900