

## T. 45 N., R. 96 W., Sixth Principal Meridian, Wyoming, Field Note Links

Plat Accession Number(s)	Year(s) of Survey	
		Township Subdivision Plats
2410	1913	<a href="https://www.wy.blm.gov/cadastral/countyplats/hotsprings/fieldnotes/t45nr96w_gp007fn.pdf">https://www.wy.blm.gov/cadastral/countyplats/hotsprings/fieldnotes/t45nr96w_gp007fn.pdf</a>
2410	1912	<a href="https://www.wy.blm.gov/cadastral/countyplats/hotsprings/fieldnotes/t45nr96w_gp007fn_bnd.pdf">https://www.wy.blm.gov/cadastral/countyplats/hotsprings/fieldnotes/t45nr96w_gp007fn_bnd.pdf</a>
2409	1883	<a href="https://www.wy.blm.gov/cadastral/countyplats/hotsprings/fieldnotes/t45nr96w_c161fn.pdf">https://www.wy.blm.gov/cadastral/countyplats/hotsprings/fieldnotes/t45nr96w_c161fn.pdf</a>
		Township Exterior Plats
4370	1891	<a href="https://www.wy.blm.gov/cadastral/countyplats/hotsprings/fieldnotes/ext2532.pdf">https://www.wy.blm.gov/cadastral/countyplats/hotsprings/fieldnotes/ext2532.pdf</a>
2367	1883	<a href="https://www.wy.blm.gov/cadastral/countyplats/hotsprings/fieldnotes/retext1687.pdf">https://www.wy.blm.gov/cadastral/countyplats/hotsprings/fieldnotes/retext1687.pdf</a>
2367	1882	<a href="https://www.wy.blm.gov/cadastral/countyplats/hotsprings/fieldnotes/ext2367.pdf">https://www.wy.blm.gov/cadastral/countyplats/hotsprings/fieldnotes/ext2367.pdf</a>
2364	1883	<a href="https://www.wy.blm.gov/cadastral/countyplats/washakie/fieldnotes/ext2364.pdf">https://www.wy.blm.gov/cadastral/countyplats/washakie/fieldnotes/ext2364.pdf</a>
2364	1883	<a href="https://www.wy.blm.gov/cadastral/countyplats/washakie/fieldnotes/retext1684.pdf">https://www.wy.blm.gov/cadastral/countyplats/washakie/fieldnotes/retext1684.pdf</a>
2363	1882	<a href="https://www.wy.blm.gov/cadastral/countyplats/washakie/fieldnotes/ext2363.pdf">https://www.wy.blm.gov/cadastral/countyplats/washakie/fieldnotes/ext2363.pdf</a>
2363	1882	<a href="https://www.wy.blm.gov/cadastral/countyplats/washakie/fieldnotes/retext1683.pdf">https://www.wy.blm.gov/cadastral/countyplats/washakie/fieldnotes/retext1683.pdf</a>

Supplemental Plat

Index Diagram of Valid Entries

Resurvey Township N<sup>o</sup>45 North, Range N<sup>o</sup>96 West of the Sixth Principal Meridian Wyoming

Utterback and Kelley, Group N<sup>o</sup>7, April 13, 1911

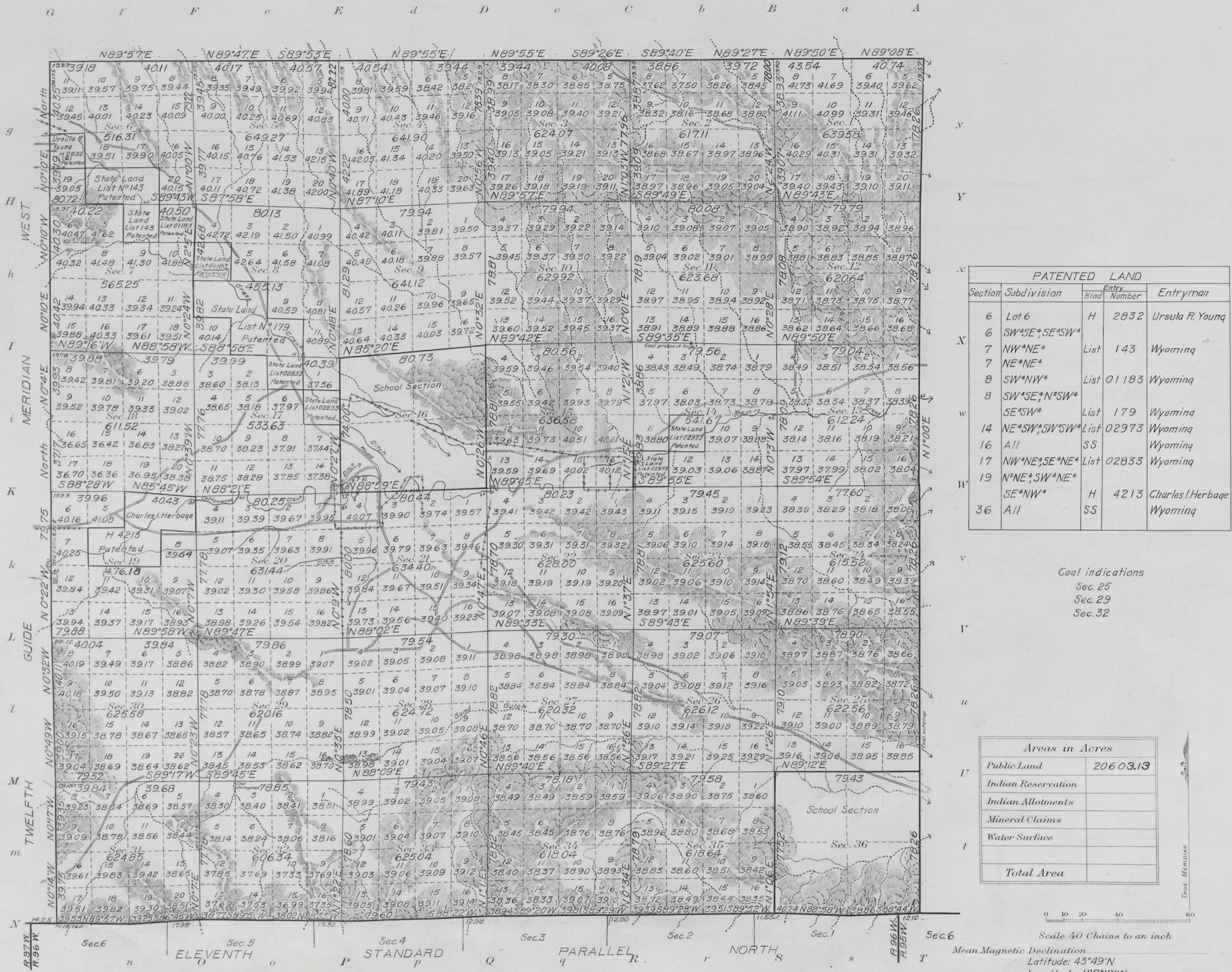
Description by Resurvey		Original Survey				
Section	Subdivisions	Section	Subdivisions	Entry		
				Kind	Number	Entryman
13	Lots 5, 6, 7, 8	13	S <sup>2</sup> N <sup>2</sup>	H.E.	04085	Thomas B. Currie
15	Lots 13, 14, 15, 16	15	S <sup>2</sup> S <sup>2</sup>	H.E.	03836	Ernest O. Ackerman
16	All	16	All	S.S.		Wyoming
20	Lots 5, 6, 7, 8	20	S <sup>2</sup> N <sup>2</sup>	D.E.	02735	Sadie O' Kirby
20	Lots 9, 16	20	E <sup>2</sup> S E <sup>+</sup>			
29	Lots 1, 8	29	E <sup>2</sup> N E <sup>+</sup>	H.E.	03058	Ralph H. Fischer
21	Lots 3, 4, 5, 6	21	NW <sup>+</sup>	H.E.	02980	Armina E. Fisher
21	Lots 1, 2, 7, 8	21	NE <sup>+</sup>	H.E.	0693	Le Roy R. Kirby
21	Lots 11, 14, 15	21	E <sup>2</sup> SW <sup>+</sup> , SW <sup>+</sup> SW <sup>+</sup>			
28	Lot 4	28	NW <sup>+</sup> NW <sup>+</sup>	H.E.	02777	Ole Johnson
22	Lots 3, 4, 5, 6	22	NW <sup>+</sup>	H.E.	03532	Philip Contor
36	All	36	All	S.S.		Wyoming

The above Table of Valid Entries is made to accompany plat of Resurvey Township N<sup>o</sup> 45 North, Range N<sup>o</sup>96 West and is hereby approved.  
 Surveyor General's Office  
 Cheyenne, Wyoming  
 May 27, 1916

*Charles L. Secker*  
 Surveyor General

Accepted by Commissioner Aug. 11, 1916.

# Resurvey Township No. 45 North, Range No. 96 West of the Sixth Principal Meridian, Wyoming



PATENTED LAND			
Section	Subdivision	Entry Number	Entryman
6	Lot 6	H 2832	Ursula R. Young
6	SW*SE*SE*SW*		
7	NW*NE*	List 143	Wyoming
7	NE*NE*		
8	SW*NW*	List 01183	Wyoming
8	SW*SE*N*SW*		
	SE*SW*	List 179	Wyoming
14	NE*SW*SW*SW*	List 02973	Wyoming
16	All	SS	Wyoming
17	NW*NE*SE*NE*	List 02833	Wyoming
19	N*NE*SW*NE*		
	SE*NW*	H 4213	Charles L. Herbage
36	All	SS	Wyoming

Coal indications  
 Sec. 25  
 Sec. 29  
 Sec. 32

Areas in Acres	
Public Land	206 03.13
Indian Reservation	
Indian Allotments	
Mineral Claims	
Water Surface	
<b>Total Area</b>	

Scale 40 Chains to an inch  
 Mean Magnetic Declination  
 Latitude: 43°49'N  
 Longitude: 108°18'W

Surveys Designated	By Whom Surveyed	Group No.	Date	Amount of Surveys		When Surveyed	
				Mls.	chs.	Beginn	Completed
Resurvey Subdivisions	Utterback & Kelley	7	April 3, 1911	5.9	31 3.9	August 20, 1913	September 3, 1913
Resurvey North Boundary	Wilford W. Utterback	"	"	6	2 3.9	October 13, 1912	October 15, 1912
Resurvey East Boundary	"	"	"	5	6.9 5.6	November 16, 1912	November 17, 1912
Resurvey South Boundary	"	"	"	5	7.2 4.2	October 7, 1912	October 8, 1912
Resurvey West Boundary	"	"	"	5	7.5 3.2	October 13, 1912	October 14, 1912
Connections	Wilford W. Utterback	"	"	1	2 7.1	October 7, 1912	October 8, 1912

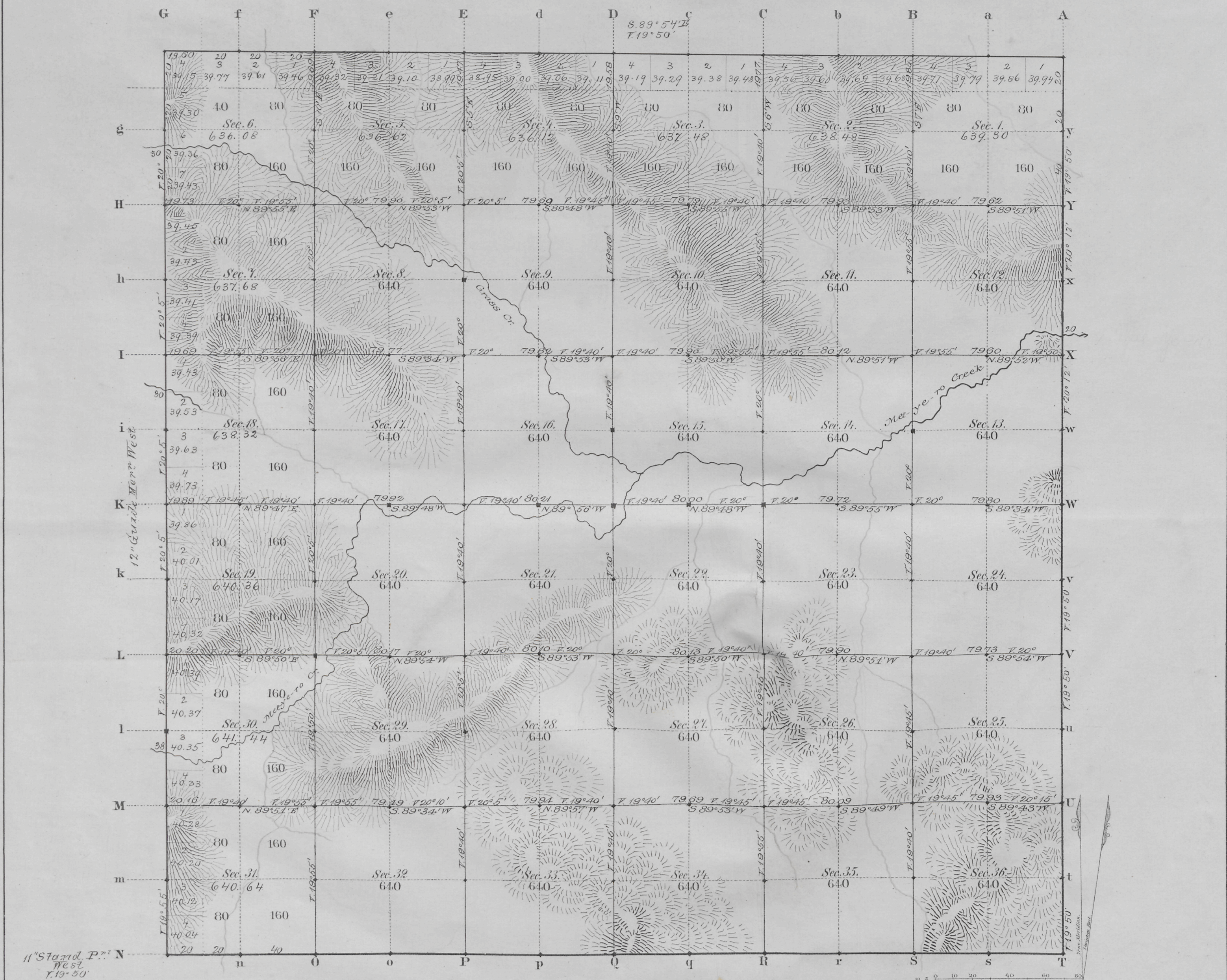
The above map of a resurvey of Township No. 45 North, Range No. 96 West of the Sixth Principal Meridian, Wyoming is strictly conformable to the field notes of the resurvey thereof on file in this office, which have been examined and approved  
 U. S. Surveyor General's Office.  
 Cheyenne, Wyoming, June 29<sup>th</sup> 1915

*Charles L. Decker*  
 Surveyor General.

Accepted by the Hon. Commissioner in letter E, dated Mch. 31, 1915.  
 Triplicate filed out to Lander L. O. Apr. 25, 1916  
**45-96**

2409

TOWNSHIP N<sup>o</sup> 45 NORTH RANGE N<sup>o</sup> 96 WEST of the 6<sup>th</sup> Principal MERIDIAN.



11<sup>th</sup> Standard P.<sup>2</sup> N  
West  
T. 19° 50'

Total number of Acres, 23,022.52

Surveys Designated	By Whom Surveyed	Date of Contract	Amount of Survey M <sup>2</sup> C <sup>2</sup> A <sup>2</sup>	When Surveyed	Magnetic Declination
Township lines	R. H. Woods	May 15 <sup>th</sup> 1882	11 79 50	Feb. 23, 25, 1882	12° 50' T. A. 58'
Subdivisions	F. W. Weissbach	" " "	59 74 99	May 14-19, 1883	19° 50'
Connections					
12 <sup>th</sup> Guide M. W. Canites A. H. Wiley	Jerry 17, 1882		6 00 00	May 16, 1882	
11 <sup>th</sup> Standard P. N.	" " "	" " "	6 00 00	March 13, 15, 1882	

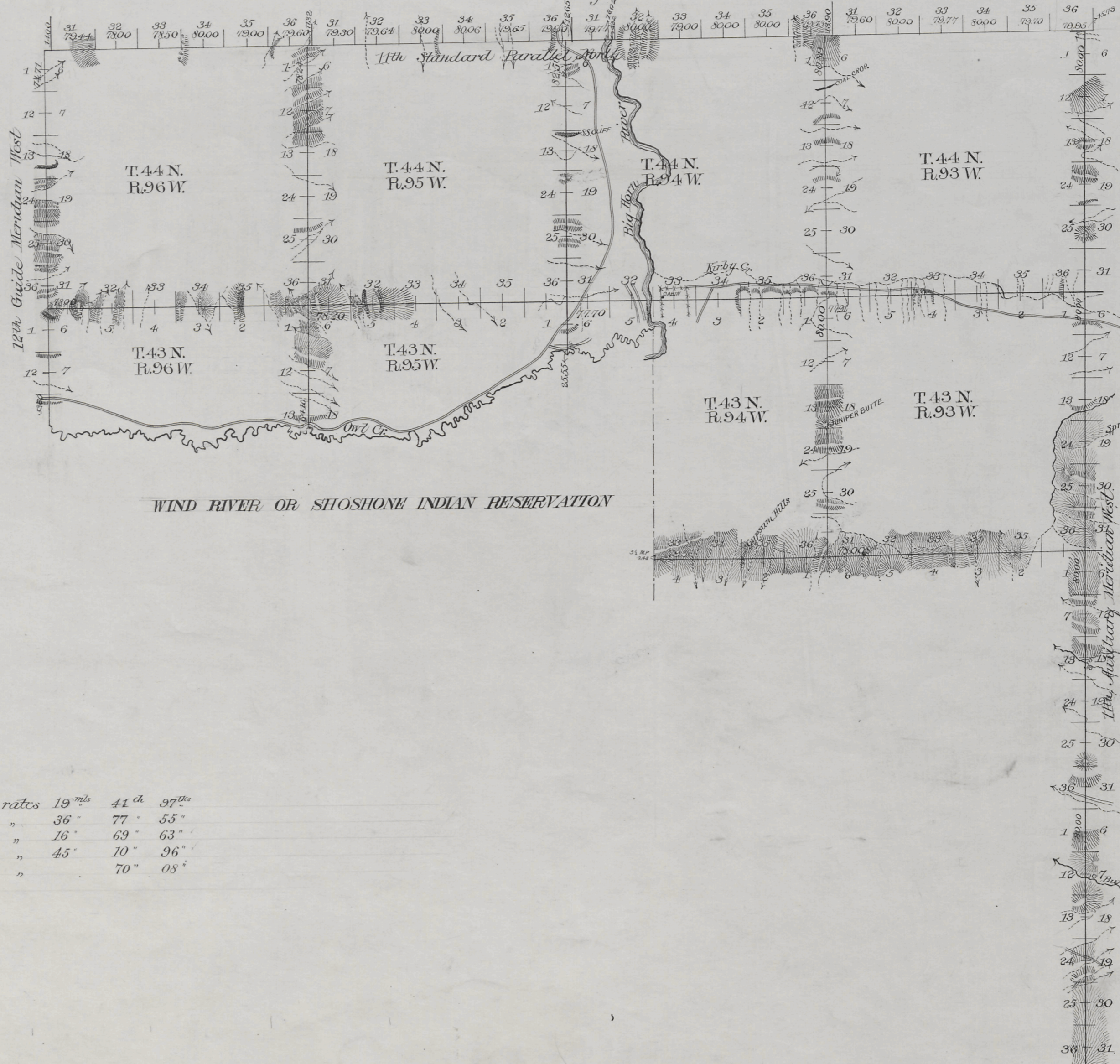
The above Map of Township No. 45 North Range No. 96 West of the 6<sup>th</sup> Principal Meridian Wyoming Territory is strictly conformable to the field notes of the survey thereof on file in this Office, which have been examined and approved

Surveyor General's Office, *Edw. C. Davis* Sur. Gen.  
Cheyenne Wyoming  
September 15<sup>th</sup> 1883

Accession No. 4370

# EXTERIOR LINES

Scale 1 inch = 2 miles. Mag. Var. East.



Standard lines at intermediate rates	19 <sup>m</sup> ls	41 <sup>ch</sup>	97 <sup>th</sup>
" " " minimum	36	77	55
Exterior " " intermediate	16	69	63
" " " minimum	45	10	96
Connection " " "		70	08

Surveys Designated	By Whom Surveyed	Date of Contract	Amount of Surveys			When Surveyed	Magnetic Declination
			11 <sup>th</sup>	12 <sup>th</sup>	13 <sup>th</sup>		
11 <sup>th</sup> Stand. Par.	Carpenter & Warner	April 1, 1891	23	70	61	July 8-10, 1891	17° 12' East
11 <sup>th</sup> Aux. Mer.	"	"	24	00	60	" 5-7 "	17° 04' "
12 <sup>th</sup> Guide Mer.	"	"	8	48	31	" 12 "	17° 20' "
Exteriors	"	"	62	00	59	Sept 23-30	17° 14' "
Connections	"	"		70	08	July 8-10, 1891	17° 12' "

I hereby certify that the above diagram of the 11th Standard Parallel North in Ranges 93, 94, 95 and 96 West; the 11th Guide Meridian West in Townships 43, 44 North; the 12th Guide Meridian West in Townships 43 and 44 North, and the Exterior Boundaries of Townships 43 North Range 93 West, Townships 44 North, Ranges 93, 94, 95 and 96 West, and Fractional Townships 43 North, Ranges 94, 95 and 96 West of the 6th Principal Meridian in Wyoming, is strictly conformable to the field notes of the survey thereof on file in this office which have been examined and approved.

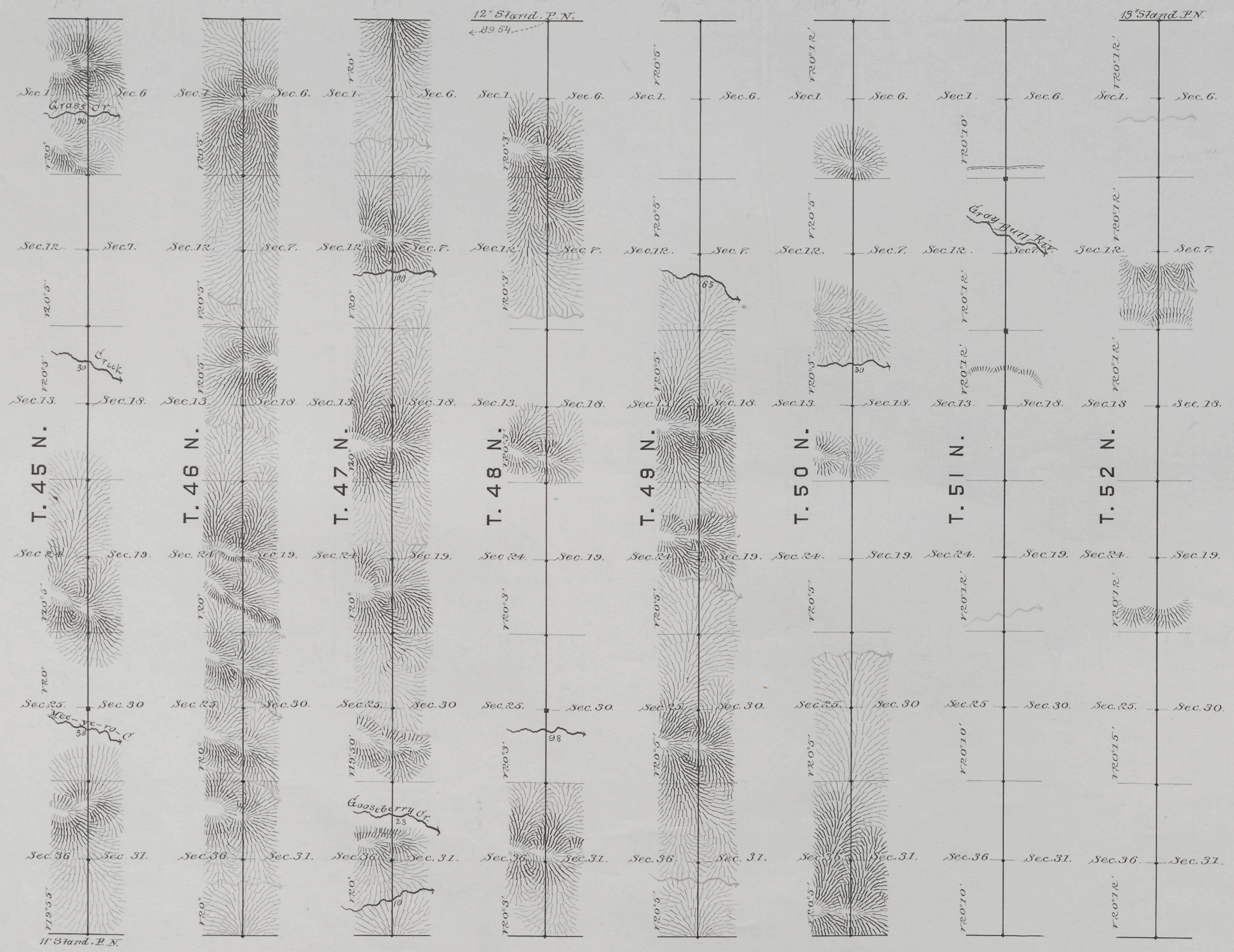
Wm. A. Richards  
Surveyor General.

Cheyenne, Wyo. May 21<sup>st</sup> 1892

22  
Indeped

# 12<sup>TH</sup> GUIDE MERIDIAN WEST.

In townships 45 to 52 North inclusive, between Ranges 96 & 97 West of the 6<sup>th</sup> Principal Meridian Wyo. Ter.  
Magnetic Variation East. Scale 3 miles to one inch.



Surveys Designated	By Whom Surveyed	Date of Contract	Amount of Surveys	When Surveyed
12 <sup>th</sup> Guide Merid. W.	Charles A. Honey	Jan. 12 <sup>th</sup> 1882	48 00 00	May 16-30, 1882
Connections	"	"	09 54	May 16 <sup>th</sup> "

I hereby Certify that the above diagram of the 12<sup>th</sup> Guide Meridian West, in Townships 45 to 52 North, inclusive, between Ranges 96 & 97 West of the 6<sup>th</sup> Principal Meridian, Wyoming Territory, is strictly conformable to the field notes of the survey thereof on file in this Office, which have been examined and approved.

Surveyor General's Office }  
Cheyenne Wyoming } *Edw. C. David* Sur. Gen.  
Sept. 8<sup>th</sup> 1883

# EXTERIOR LINES.

Scale 3 miles to 1 inch. Magnetic Var. East.



Surveys designated	By whom surveyed	Date of contract	Ext. of surveys.			When surveyed.
			Mls.	Ac.	sq.	
Exterior lines	R. H. Woods.	May. 15, 1882.	143	70	64.	Feb. 12-Mar. 2, 1883.
Connections			8	91		

I hereby certify that the above diagram of the Exterior lines of T. 45, 46, 47 & 48 N. R. 93, 94, 95 & 96. W. of the 6th Principal Meridian Wyoming Territory, is strictly conformable to the field notes of the survey thereof on file in this Office, which have been examined and approved.

Surveyor General's Office,  
Cheyenne, Wyo. 24<sup>th</sup> Apr 3<sup>rd</sup> 1883.

*Edw. C. David*  
Surveyor General.

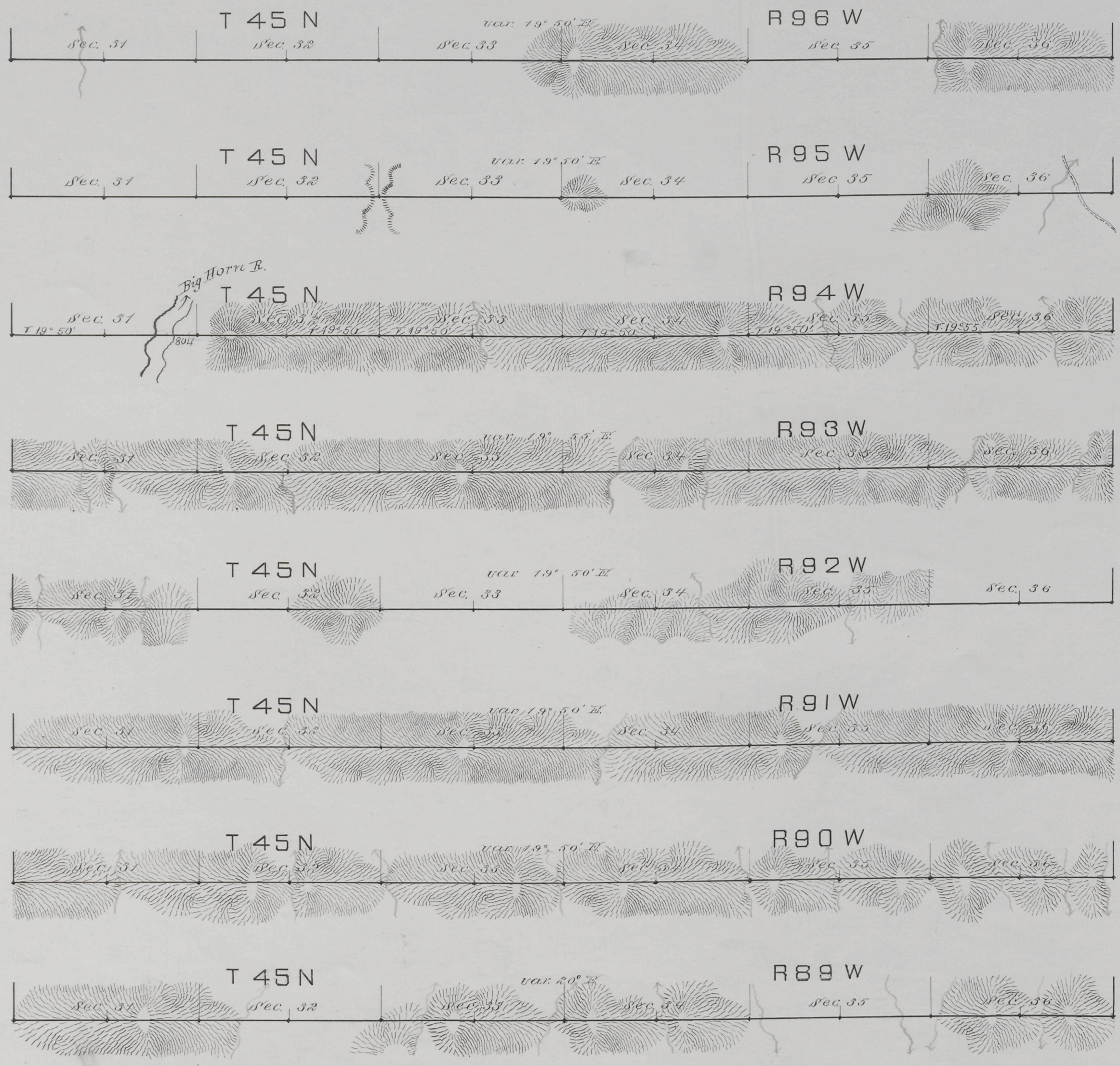
(22)  
Indices

# 11<sup>TH</sup> STANDARD PARALLEL NORTH

Along the South bound. of Tp. 45 N, R's 89 to 96 inclusive, West of the 6<sup>th</sup> P.M. Wyoming T<sub>y</sub>.

Scale 40 chs to 1 inch. Mag. var. East.

Course West.



May 13, 15, 82

May 13, 82

May 12, 13, 82

May 12, 82

Apr 24, 82

Apr 22, 82

Apr 21, 22, 82

Apr 21, 82

Survey Designated	By Whom Surveyed	Date of contract	Amount of Survey	When Surveyed
			Acres	Chs
11 <sup>th</sup> Stand. Par. N.W.	Chas. F. Honey	Jan. 1 <sup>st</sup> , 1882	48	0 0
				Apr 21 & May 13, 82

I hereby certify that the above diagram of the 11<sup>th</sup> Stand. Par. North, along the South bound. of Tp. 45 N, Ranges 89 to 96 inclusive, West of the 6<sup>th</sup> P.M. Wyo. Ter. is strictly conformable to the field notes of the Survey on file in this Office, which have been examined and approved.

Surveyor General's Office,  
Cheyenne Wyoming, Sept 8, 1882

*Edw. C. Davis*  
Surveyor General.