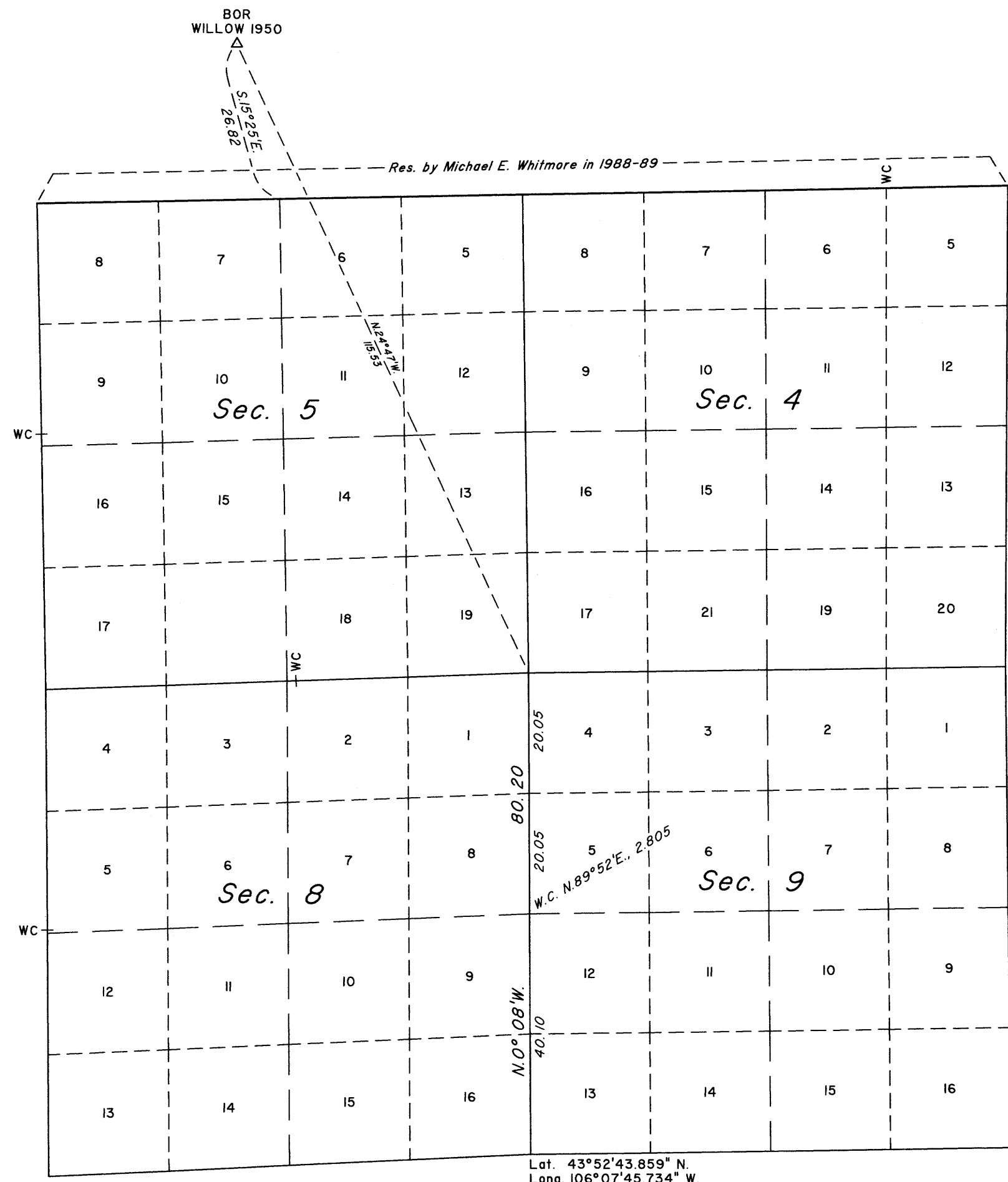


T. 45 N., R. 77 W., Sixth Principal Meridian, Wyoming, Field Note Links

Plat Accession Number(s)	Year(s) of Survey	
		Township Subdivision Plats
8780	2018	https://www.wy.blm.gov/cadastral/countyplats/johnson/fieldnotes/t45nr77w_gp994fn.pdf
8065	1989-90	https://www.wy.blm.gov/cadastral/countyplats/johnson/fieldnotes/t45nr77w_gp510fn.pdf
6526	1948	https://www.wy.blm.gov/cadastral/countyplats/johnson/fieldnotes/t45nr77w_gp209fn.pdf
1497	1882	https://www.wy.blm.gov/cadastral/countyplats/johnson/fieldnotes/t45nr77w_c157fn.pdf
		Township Exterior Plats
1110	1882	https://www.wy.blm.gov/cadastral/countyplats/campbell/fieldnotes/retext0795.pdf
1110	1881	https://www.wy.blm.gov/cadastral/countyplats/campbell/fieldnotes/ext1110.pdf
1114	1882	https://www.wy.blm.gov/cadastral/countyplats/campbell/fieldnotes/retext0799.pdf
1114	1881	https://www.wy.blm.gov/cadastral/countyplats/campbell/fieldnotes/ext1114.pdf

TOWNSHIP 45 NORTH, RANGE 77 WEST, OF THE SIXTH PRINCIPAL MERIDIAN, WYOMING.

CORRECTIVE DEPENDENT RESURVEY



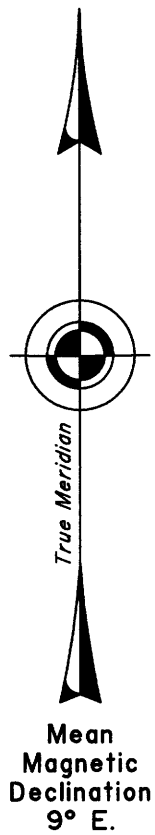
A history of surveys is contained in the field notes.

This plat represents the corrective dependent resurvey of a portion of the subdivisional lines, designed to restore the corners in their true original locations according to the best available evidence, T. 45 N., R. 77 W., Sixth Principal Meridian, Wyoming.

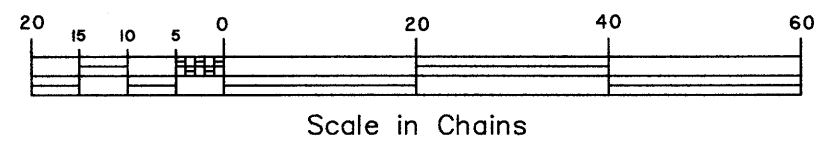
Solid lines not showing bearing and distance, unless otherwise noted, were dependently resurveyed by Michael E. Whitmore in 1989-90.

The lotting and areas are as shown on the plat approved January 24, 1883, and the plats accepted August 17, 1995 and April 9, 2004.

Survey executed by James E. Jacob, Cadastral Surveyor, beginning and completed August 7, 2018, pursuant to special instructions and assignment instructions dated June 13, 2018, for Group No. 994, Wyoming.



Lat. 43°52'43.859" N.
 Long. 106°07'45.734" W.
 NAD83 (2011)(EPOCH:2010)



UNITED STATES DEPARTMENT OF THE INTERIOR
 BUREAU OF LAND MANAGEMENT

Cheyenne, Wyoming March 25, 2020

This plat is strictly conformable to the approved field notes, and the survey, having been correctly executed in accordance with the requirements of law and the regulations of this Bureau, is hereby accepted.

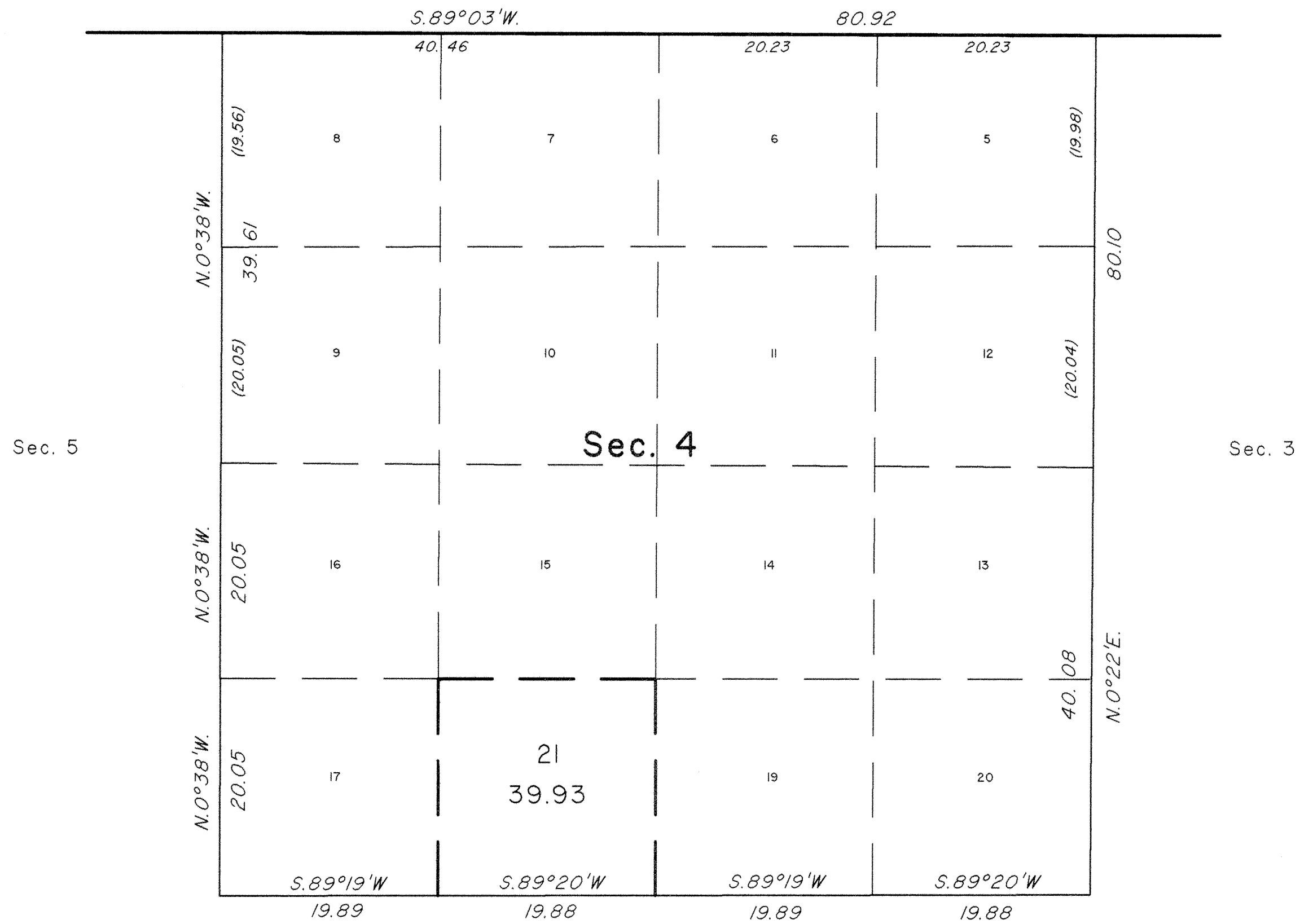
For the Director

Sonja S. Sparks
 Chief Cadastral Surveyor for Wyoming

TOWNSHIP 45 NORTH, RANGE 77 WEST, OF THE SIXTH PRINCIPAL MERIDIAN, WYOMING.

SUPPLEMENTAL PLAT

Sec. 33



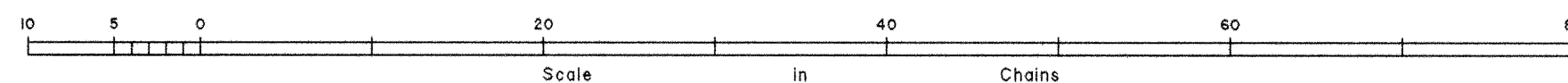
This plat showing the corrected lotting and acreage is based on the plat approved August 17, 1995.

UNITED STATES DEPARTMENT OF THE INTERIOR
BUREAU OF LAND MANAGEMENT

Cheyenne, Wyoming April 9, 2004

This plat, showing amended lottings, is based upon the official records and, having been correctly prepared in accordance with the regulations of this Bureau, is hereby accepted.

For the Director
John P. Lee
Chief Cadastral Surveyor for Wyoming



TOWNSHIP 45 NORTH, RANGE 77 WEST, OF THE SIXTH PRINCIPAL MERIDIAN, WYOMING.
SUPPLEMENTAL PLAT



This plat showing a subdivision of certain sections, T. 45 N., R. 77 W., Sixth Principal Meridian, Wyoming, is based upon the plats accepted May 26, 1952 and August 17, 1995.

Certain modified lots and areas shown hereon pertain to Federal interest estate only. Except as indicated hereon, the lottings and areas are as shown on the plat approved January 24, 1883, and the plat accepted August 17, 1995.

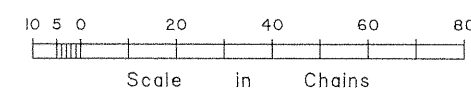
UNITED STATES DEPARTMENT OF THE INTERIOR
BUREAU OF LAND MANAGEMENT

Cheyenne, Wyoming August 17, 1995

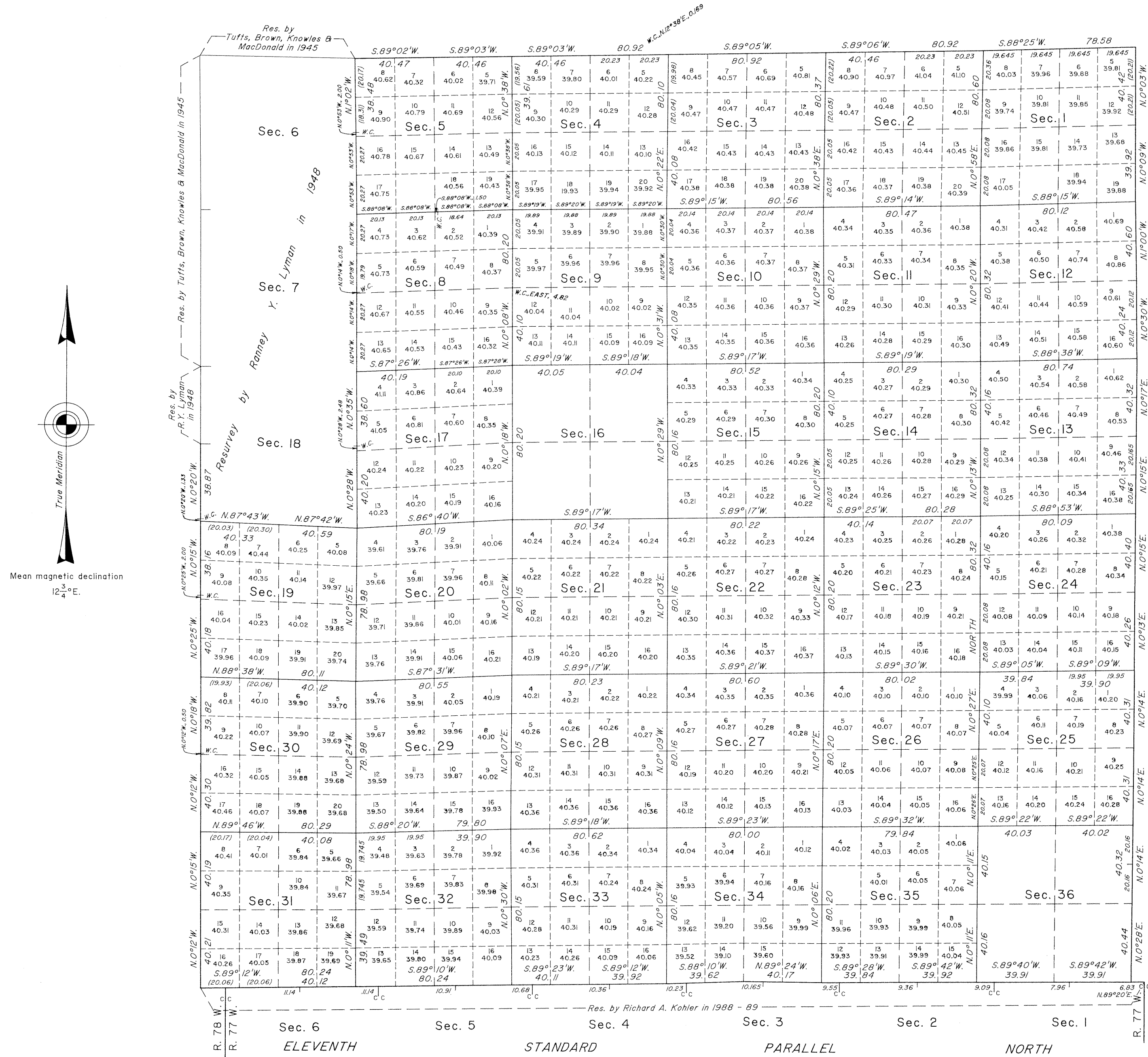
This plat, showing amended lottings, is based upon the official records and, having been correctly prepared in accordance with the regulations of this Bureau, is hereby accepted.

For the Director

Chief Cadastral Surveyor for Wyoming



TOWNSHIP 45 NORTH, RANGE 77 WEST, OF THE SIXTH PRINCIPAL MERIDIAN, WYOMING.
DEPENDENT RESURVEY



A history of surveys is contained in the field notes.

A portion of the north boundary was dependently resurveyed by Michael E. Whitmore during the resurvey of T. 46 N., R. 77 W., executed concurrently under this same group.

This plat represents the dependent resurvey of the east boundary, a portion of the west boundary and a portion of the subdivisional lines designed to restore the corners in their true original locations according to the best available evidence, T. 45 N., R. 77 W., Sixth Principal Meridian, Wyoming.

Certain modified lots and areas shown hereon pertain to Federal interest estate only. Except as indicated hereon, the lottings and areas are as shown on the plat approved January 24, 1883.

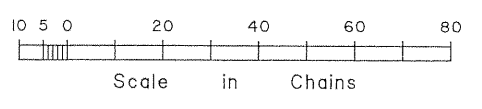
Survey executed by Michael E. Whitmore, Cadastral Surveyor, beginning August 30, 1989, and completed August 14, 1990, pursuant to Special Instructions dated February 12, 1988, for Group No. 510, Wyoming.

UNITED STATES DEPARTMENT OF THE INTERIOR
BUREAU OF LAND MANAGEMENT
Cheyenne, Wyoming August 17, 1995

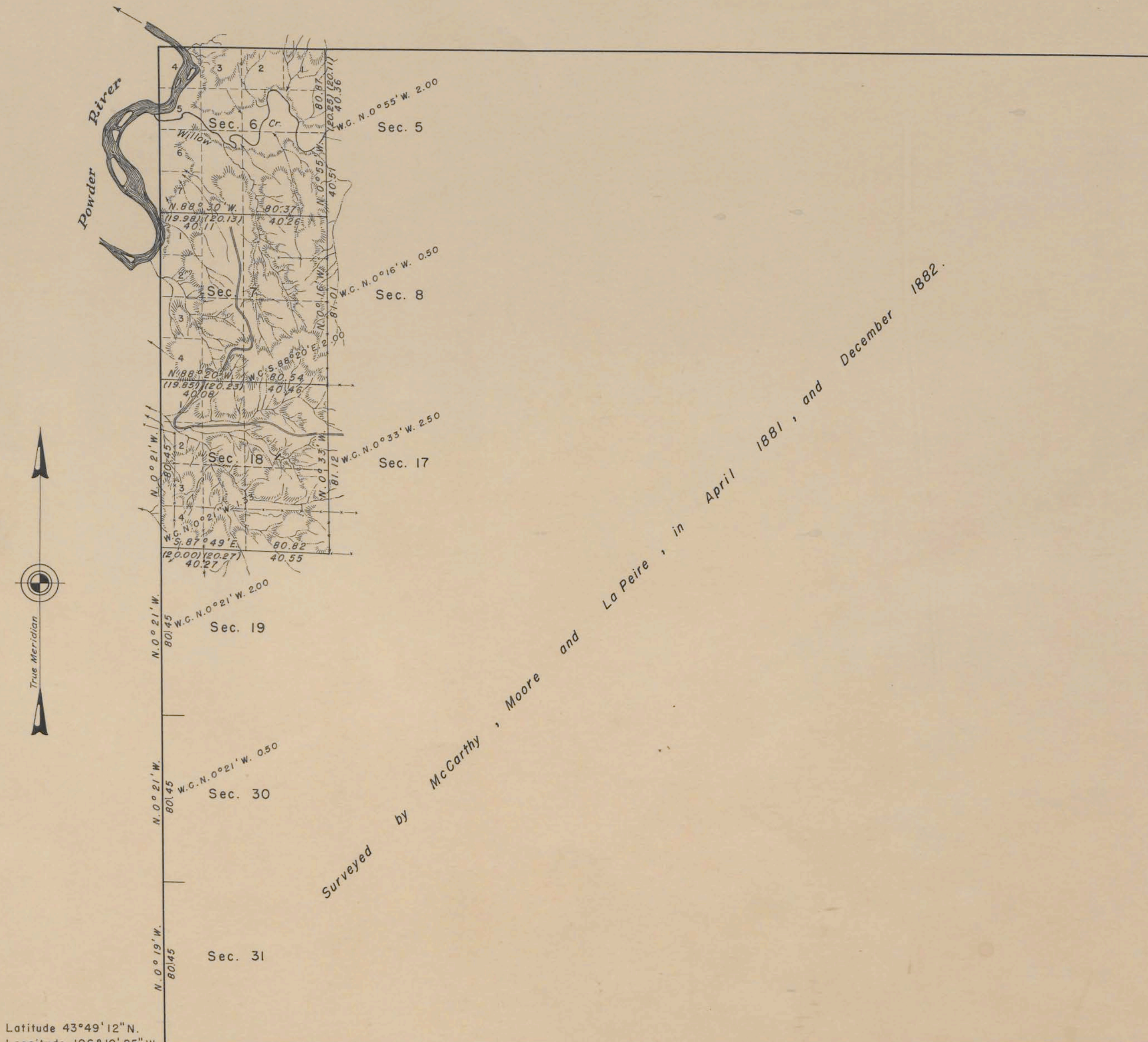
This plat is strictly conformable to the approved field notes, and the survey, having been correctly executed in accordance with the requirements of law and the regulations of this Bureau, is hereby accepted.

For the Director
John P. Lee
Chief Cadastral Surveyor for Wyoming

Lat. 43°49'16.8"N.
Long. 106°02'55.25"W.
NAD 27

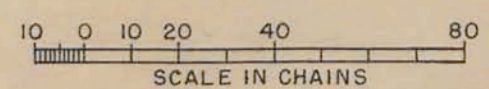


TOWNSHIP N^o 45 NORTH, RANGE N^o 77 WEST, OF THE SIXTH PRINCIPAL MERIDIAN, WYOMING. DEPENDENT RESURVEY



Latitude 43°49'12" N.
Longitude 106°10'25" W.

ELEVENTH STANDARD PARALLEL NORTH



Area Resurveyed: 1,913.83 Acres

A portion of the west boundary was resurveyed by Ranney Y. Lyman in 1948.
Resurvey of a portion of the subdivisional lines executed by Ranney Y. Lyman under Special Instructions for Group 209 Wyoming, dated April 5, 1946.

J.G.H. Topography compiled from Aerial Photographs

This plat represents a retracement and reestablishment of portions of the original township boundary and subdivisional lines designed to restore all corners in their original locations according to the best available evidence. The lottings and areas are as shown on the plat approved January 24, 1883.



UNITED STATES DEPARTMENT OF THE INTERIOR
BUREAU OF LAND MANAGEMENT
Washington, D. C., May 26, 1952

This plat is strictly conformable to the approved field notes, and the survey, having been correctly executed in accordance with the requirements of law and the regulations of this Bureau, is hereby accepted.

For the Director
William F. Richards
Chief, Branch of Surveys

P.E.C.
438

1497

TOWNSHIP N^o 45 NORTH, RANGE N^o 77 WEST OF 6th PRINCIPAL MERIDIAN.



11th Stand. Par. N.
(N 89° 43' 27")

Total number of Acres, 23,031.39.

Survey Description	By Whom Surveyed	Date of Contract	Amount of Survey	When Surveyed	Magnetic Declination
N. H. Township Lines	M. Carney & Moore	Feb. 2 nd 1831	17 79 90	Apr. 21, 23, 29, 1831	10° 15' East.
Subdivisions	L. A. La Peire	May 5 th 1858	59 76 7	Dec 25-30 1882	16°.
11 th Stand. Par. S.	M. Carney & Moore	Feb. 2 nd 1831	0 0 0	May 28 th 1831	

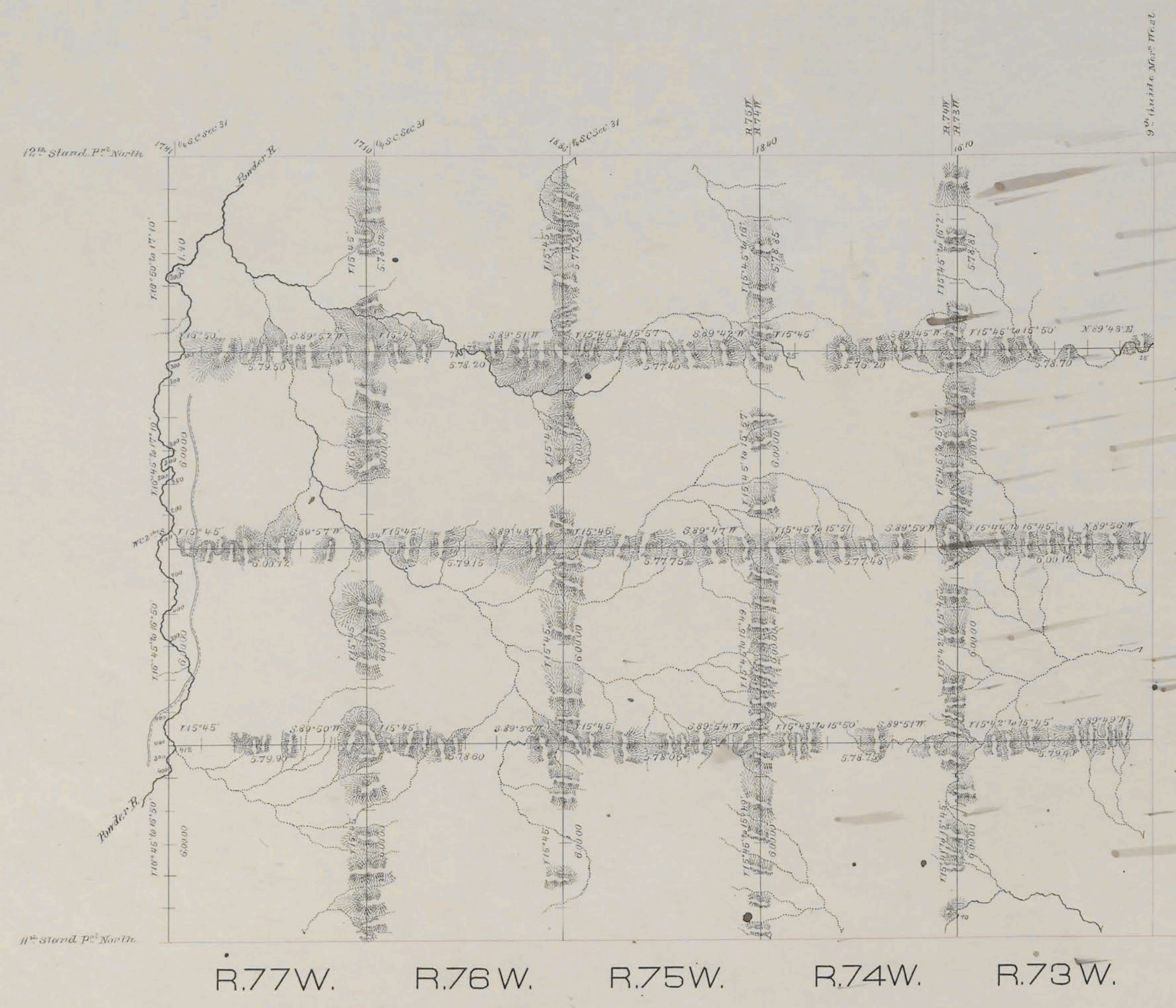
The above map of Township N^o 45 North, Range N^o 77 West of the 6th Principal Meridian, Wyoming Territory is strictly conformable to the field notes of the survey thereof on file in this Office, which have been examined and approved.
 Surveyor General's Office,
 Cheyenne Wyoming.
 January 2nd 1885

Edw. C. David Sur. Gen.^o

Indexed

EXTERIOR LINES

Scale, 3 miles to an inch Magnet. Varial East.



T. 48 N.

T. 47 N.

T. 46 N.

T. 45 N.

R. 77 W. R. 76 W. R. 75 W. R. 74 W. R. 73 W.

Surveys Designated	By whom Surveyed	Date of Contract	Amount of surveys mcs chs rcs	When surveyed
Exterior Lines	McCarty & Moore	February 2, 1881	209 54 23	April 1 st - May 4, 1881
Connections	"	"	1 7 87	"

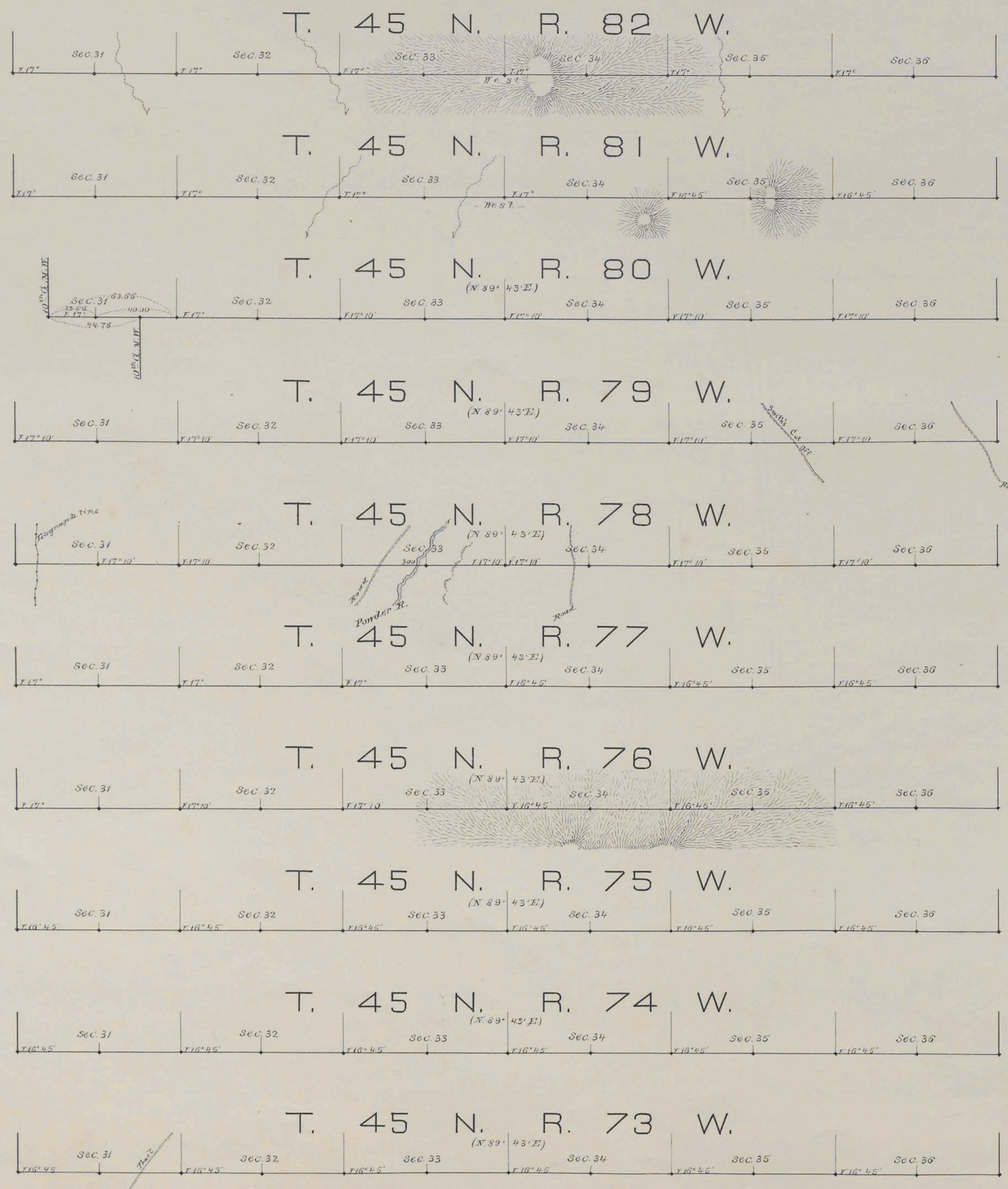
I hereby certify that the above diagram of the exterior lines, of Townships 45 to 48 N inclusive, Ranges 73 to 77 inclusive, west of the 6th Principal Meridian, Wyoming Territory, is strictly conformable to the field notes of the survey thereof on file in this Office, which have been examined and approved.

Surveyor General's Office,
Cheyenne, Wyo. July 24th 1882.

Edw. C. David
Surveyor General

11TH STANDARD PARALLEL NORTH.

betw. T^{NS} 44 & 45 N., R^{NS} 73 to 82 inclusive, West of the 6th Principal Meridian, Wyoming Territory.



June 4, 82

June 6, 82

May 26, 82

May 24, 82

May 28, 82

May 28, 82

May 29, 82

May 29, 82

May 30, 82

May 30, 82

Scale, 40 chains to an inch

Magnetic Variation East.

Surveys Designated	By whom surveyed	Date of Contract	Amount of Surveys			When surveyed
			m ² s.	Chs.	Rks.	
11 th Stand. Par ^l N.	M. S. Casper & Moore	Febr. 2, 1881	59	93	6.6	March 25 - June 7 th 1882

I hereby certify that the above diagram of the 11th Standard Parallel North, betw. Townships 44 & 45 N., ranges 73 to 82 inclusive, West of the 6th Principal Meridian, Wyoming Territory, is strictly conformable to the field notes of the survey thereof on file in this Office, which have been examined and approved.
 Surveyor General's Office,
 Cheyenne, Wyo July 24th 1882

Edw. C. David
 Surveyor General.

T. 45 N., R. 77 W., Sixth Principal Meridian, Wyoming, Mineral Survey Links

Plat Accession Number(s)	Year(s) of Survey	
		Mineral Survey No. 753 (Sections 4 and 5)
8091; 8092; 8093; 8094; 8095; 8096; 8097	1994-95	https://www.wy.blm.gov/cadastral/mineralsurvey/750-1877/ms753.pdf
		Mineral Survey No. 754 (Sections 16, 21, 27, 28, 33, and 34)
8160; 8161; 8162; 8163; 8164; 8165	1994	https://www.wy.blm.gov/cadastral/mineralsurvey/750-1877/ms754.pdf
		Mineral Survey No. 755 (Sections 34, 35, and 36)
8167; 8168; 8169; 8170; 8171; 8172; 8173; 8174; 8175	1994	https://www.wy.blm.gov/cadastral/mineralsurvey/750-1877/ms755.pdf
		Mineral Survey No. 756 (Sections 24, 25, and 36)
8201; 8202; 8203; 8204; 8205; 8206; 8207; 8208; 8209; 8210; 8211; 8212	1994	https://www.wy.blm.gov/cadastral/mineralsurvey/750-1877/ms756.pdf