

T. 49 N., R. 77 W., Sixth Principal Meridian, Wyoming, Field Note Links

Plat Accession Number(s)	Year(s) of Survey	
		Township Subdivision Plats
8795	2019	See plat for field notes.
6489	1946-47	https://www.wy.blm.gov/cadastral/countyplats/johnson/fieldnotes/t49nr77w_gp209fn.pdf
2226	1883	https://www.wy.blm.gov/cadastral/countyplats/johnson/fieldnotes/t49nr77w_c196fn.pdf
		Township Exterior Plats
2245	1883	https://www.wy.blm.gov/cadastral/countyplats/campbell/fieldnotes/ext2245.pdf
2225	1883	https://www.wy.blm.gov/cadastral/countyplats/campbell/fieldnotes/ext2225.pdf
845	1881; 1882; 1883	https://www.wy.blm.gov/cadastral/countyplats/crook/fieldnotes/retext0631.pdf
845	1881	https://www.wy.blm.gov/cadastral/countyplats/crook/fieldnotes/ext0845.pdf

TOWNSHIP 49 NORTH, RANGE 77 WEST, OF THE SIXTH PRINCIPAL MERIDIAN, WYOMING.

DEPENDENT RESURVEY

SURVEY INFORMATION AND CERTIFICATE

This plat represents the entire record of the dependent resurvey of a portion of the subdivisional lines designed to restore the corners to their original locations according to the best available evidence, Township 49 North, Range 77 West, Sixth Principal Meridian, Wyoming.

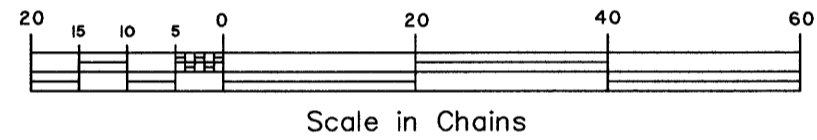
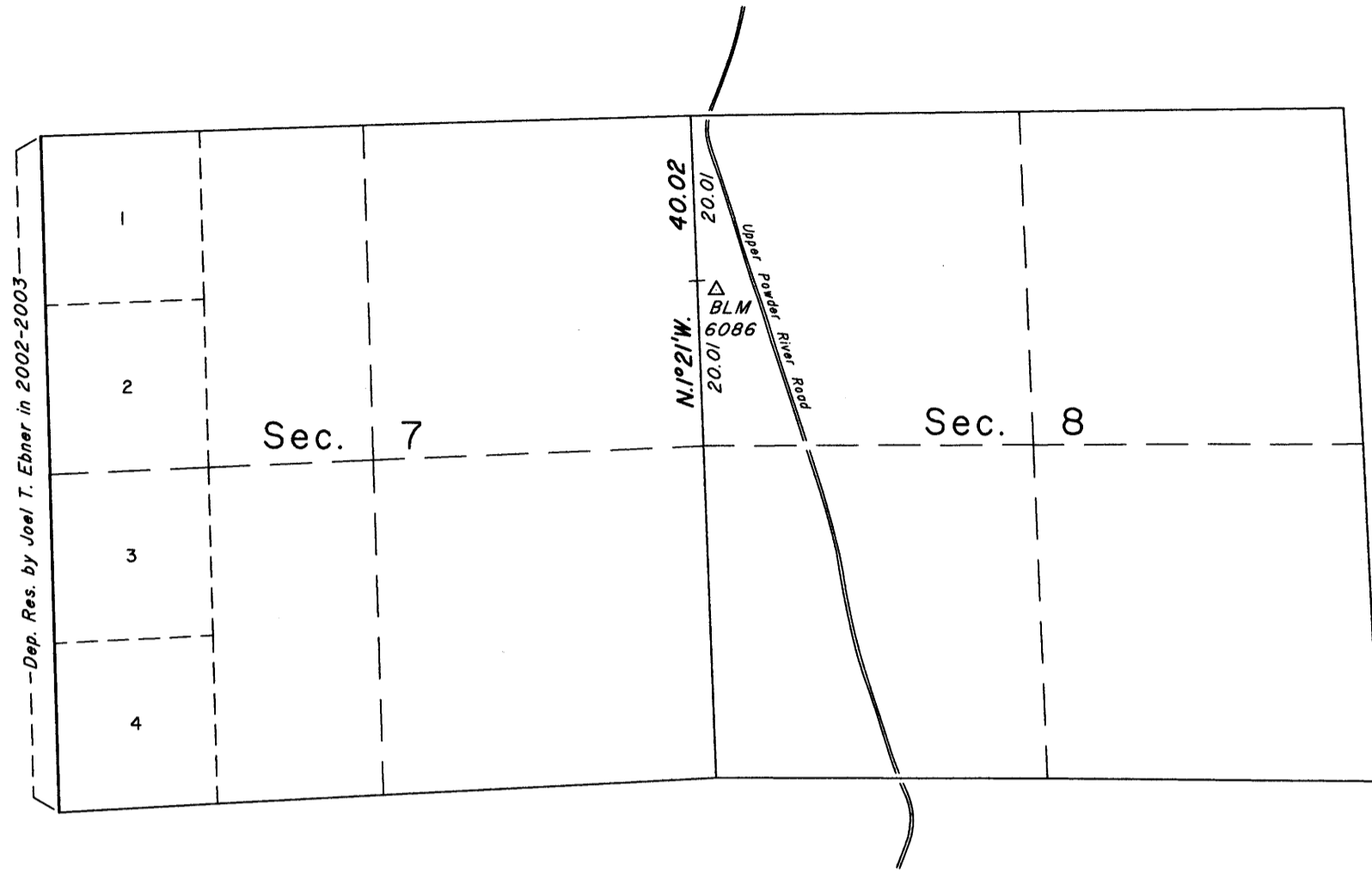
The history of surveys pertaining to this resurvey is as follows. Edward F. Stahle surveyed the west boundary and the subdivisional lines in 1883. Russell C. MacDonald dependently resurveyed the west boundary and the subdivisional lines in 1946-1947. Joel T. Ebner dependently resurveyed the west boundary with the dependent resurvey of T. 49 N., R. 78 W., in 2002-2003. Local surveys have been executed in the area and acceptance of these are contained hereon.

Lottings and areas are as shown on the plat approved August 15, 1883.

Unless otherwise noted, solid lines not showing bearing and distance were dependently resurveyed by Russell C. MacDonald in 1946-1947.

The direction and length of all lines were determined by TRIMBLE Model R8s and RIO-2 Global Positioning System/Global Navigation Satellite Systems (GPS/GNSS) receivers. Measurement procedures used were in accordance with Standards for the Positional Accuracy of Cadastral Surveys When Using Global Navigation Satellite Systems (GNSS), dated February 23, 2009. The direction of all lines are referenced to the true meridian. All reported positions are referenced to the NAD83 (2011) (EPOCH:2010) datum. Documentation of the GPS/GNSS project control point BLM 6086 position determination is included in the group file. The magnetic declination was not observed.

I, James E. Jacob, Cadastral Surveyor, HEREBY CERTIFY upon honor that, in pursuance of special instructions dated April 17, 2019, and assignment instructions dated April 17, 2019, for Group No. 1013, Wyoming, I have dependently resurveyed a portion of the subdivisional lines, Township 49 North, Range 77 West, Sixth Principal Meridian, in the State of Wyoming, and that this plat, in one sheet, represents the entire record of this survey. Survey commenced and completed June 6, 2019, and that said survey has been made in strict conformity with said special instructions, the Manual of Instructions for the Survey of the Public Lands of the United States, and in specific manner described hereon.



The 1/4 sec. cor. of secs. 7 and 8, monumented with an iron post, 1 in. diam., as described in the field notes of the 1946-1947 dependent resurvey.

Set a steel fence post alongside the iron post.

Latitude 44° 14' 04.216" N. Longitude 106° 09' 32.147" W.

From this point, GPS/GNSS project control point BLM 6086 bears N. 5° 34' E., 18.95 chs. dist., monumented with a drivable stainless steel rod, 30 ins. long, 9/16 in. diam., with brass cap mkd. BLM CADASTRAL SURVEY 6086 2019 and a triangle.

Latitude 44° 14' 16.505" N. Longitude 106° 09' 30.480" W. HAE 3964.15 sft.

Point for the N. 1/16 sec. cor. of secs. 7 and 8.

Set a stainless steel post, 28 ins. long, 2 1/2 ins. diam., 26 ins. in the ground, atop a plastic encased magnetic marker, with brass cap mkd.

T49N R77W
N 1/16
S 7 | S 8
2019

Set a steel fence post alongside the stainless steel post.

Cor. is located 50 lks. N. of trail road extending ESE. and WNW.

The cor. of secs. 5, 6, 7 and 8, monumented with the remains of an iron post, 28 ins. long, 2 ins. diam., firmly set, lower 18 ins. vertical, remainder bent to S. and sheared flush with the surface of the ground. The top portion of the iron post was searched for, not recovered. This position is in harmony with the position filed upon by Donald F. Brady, Wyoming Professional Land Surveyor No. 5655, in the Johnson County Clerk's Office, and as shown on a well plat prepared by Keith A. Neustel, Wyoming Professional Engineer and Land Surveyor No. 2085, and on file with the Wyoming Oil and Gas Conservation Commission.

At the cor. point

Set a stainless steel post, 28 ins. long, 2 1/2 ins. diam., 26 ins. in the ground, atop a plastic encased magnetic marker, with brass cap mkd.

T49N R77W
S 6 | S 5
S 7 | S 8
2019

Bury the remains of the iron post and set a steel fence post alongside the stainless steel post.

Cor. is located along western edge of pipeline scar, bears SSE. and NNW.; 2.20 chs. N. of road, dirt surface, extending SE. and NW.; and 2.25 chs. W. of Upper Powder River Road, gravel surface, on curve, extending NE. and S.

Latitude 44° 14' 30.285" N. Longitude 106° 09' 32.999" W.

August 26, 2020

Date

James E. Jacob
James E. Jacob
Cadastral Surveyor

UNITED STATES DEPARTMENT OF THE INTERIOR
BUREAU OF LAND MANAGEMENT

Cheyenne, Wyoming

August 26, 2020

This plat, representing the entire record of this dependent resurvey, is strictly conformable to the survey, having been correctly executed in accordance with the requirements of law and the regulations of this Bureau, is hereby accepted.

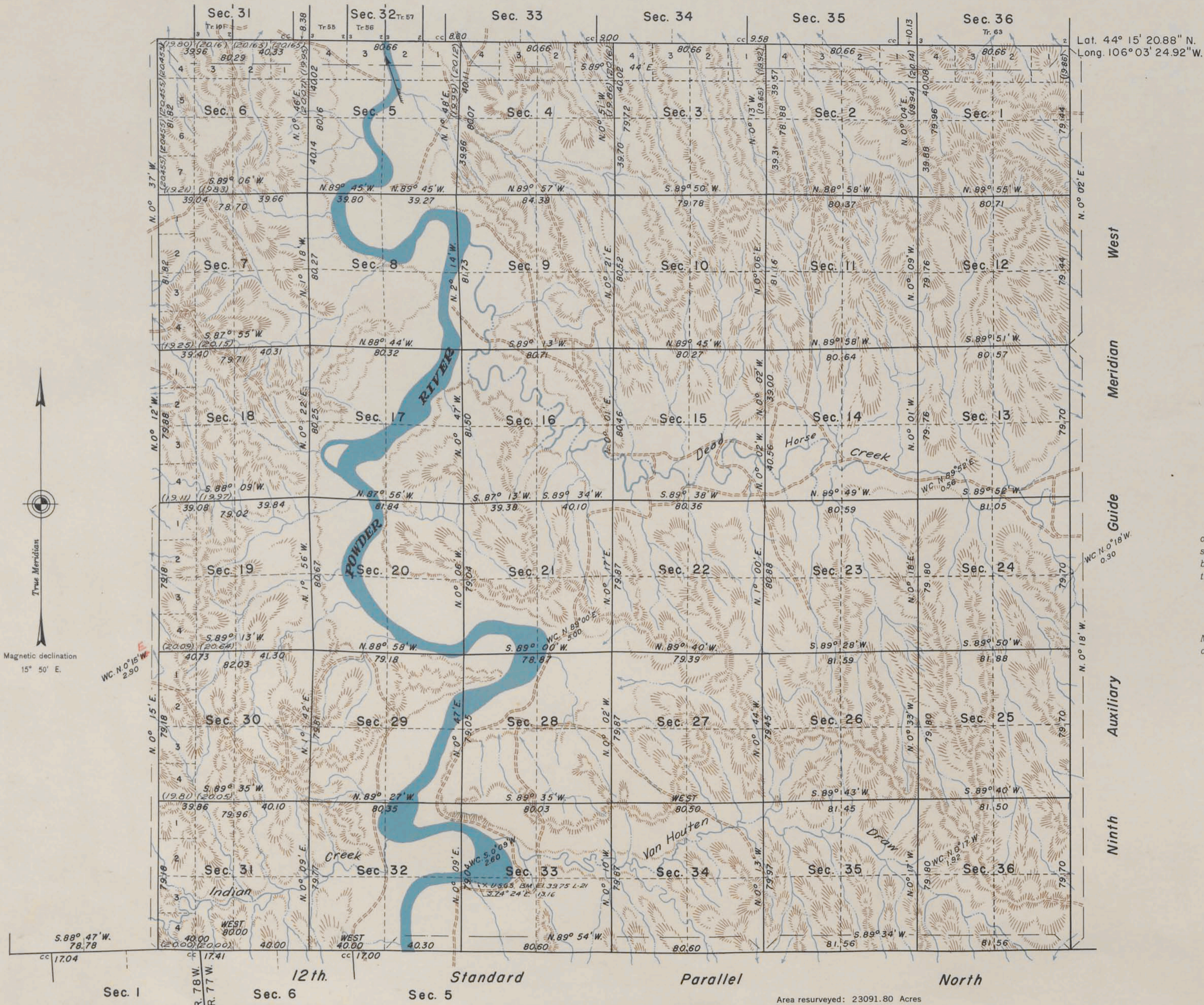
For the Director

Sonya S. Sparks
Sonya S. Sparks

Chief Cadastral Surveyor for Wyoming

TOWNSHIP No. 49 NORTH , RANGE No. 77 WEST OF THE SIXTH PRINCIPAL MERIDIAN , WYOMING

DEPENDENT RESURVEY



Lat. 44° 15' 20.88" N.
Long. 106° 03' 24.92" W.

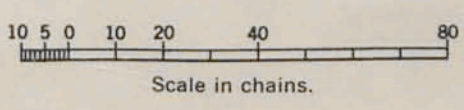


MEMORANDUM

This plat represents a retracement and reestablishment of the original township boundary and subdivisional lines designed to restore all corners in their true original locations according to the best available evidence. The lottings and areas are as shown on the plat approved August 18, 1883.

Resurvey authorized by General Land Office teletype, dated March 27, 1946, and Bureau of Land Management memorandum, dated December 13, 1946.

Area resurveyed: 23091.80 Acres



North boundary, resurveyed in 1919.

Resurvey of the East, West, and South boundaries and subdivisional lines executed by Russell C. MacDonald, beginning May 17, 1946, and completed October 29, 1947, under special instructions for Group No. 209, dated April 5, 1946, and March 4, 1947.

UNITED STATES DEPARTMENT OF THE INTERIOR
BUREAU OF LAND MANAGEMENT
Washington, D. C. September 28, 1948

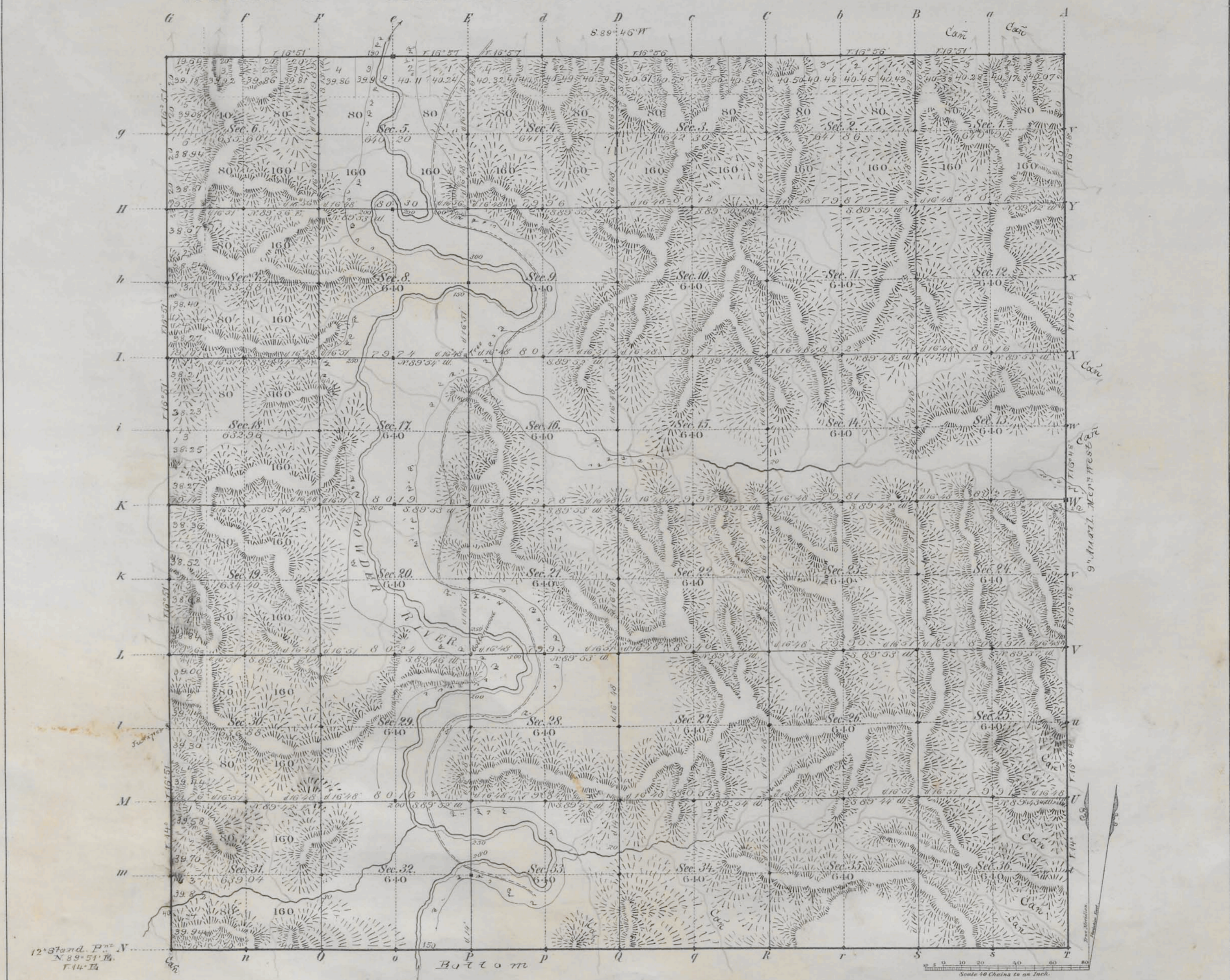
This plat is strictly conformable to the approved field notes, and the survey, having been correctly executed in accordance with the requirements of law and the regulations of this bureau, is hereby accepted.

For the Director:
William F. Richards
Acting Chief, Branch of Surveys

*Received at Survey office
July 28, 1950.*

2226

TOWNSHIP N^o 49 NORTH, RANGE N^o 77 WEST of the 6th Principal MERIDIAN.



12th Stand. Pth N
N 89° 51' E
T 14° E

Total number of Acres, 23019 80

Surveys Designated	By Whom Surveyed	Date of Contract	Amount of Survey M ^{cs} C ^{ts} L ^{ts}	When Surveyed	Magnetic Declination
N ^o 49 Township lines	H. F. Stande	July 12, 1882	11 72 94	March 24, 1882	16° 52' N. or S.
Subdivisions	" "	" "	59 78 00	May 19, 1883	15° 30' "
Connections	" "	" "	0 00 00	March 15, 1883	" "
9 th Aux ^l T. N. W.	" "	" "	0 00 00	March 15, 1883	" "
12 th Stand. P. N.	" "	Aug. 12, 1880	0 00 00	June 28, 1881	" "

The above Map of Township N^o 49 North, Range N^o 77 West of the 6th Principal Meridian Wyoming Territory is strictly conformable to the field notes of the survey thereof on file in this Office, which have been examined and approved

Surveyor General's Office,
Cheyenne, Wyoming
August 15th 1883

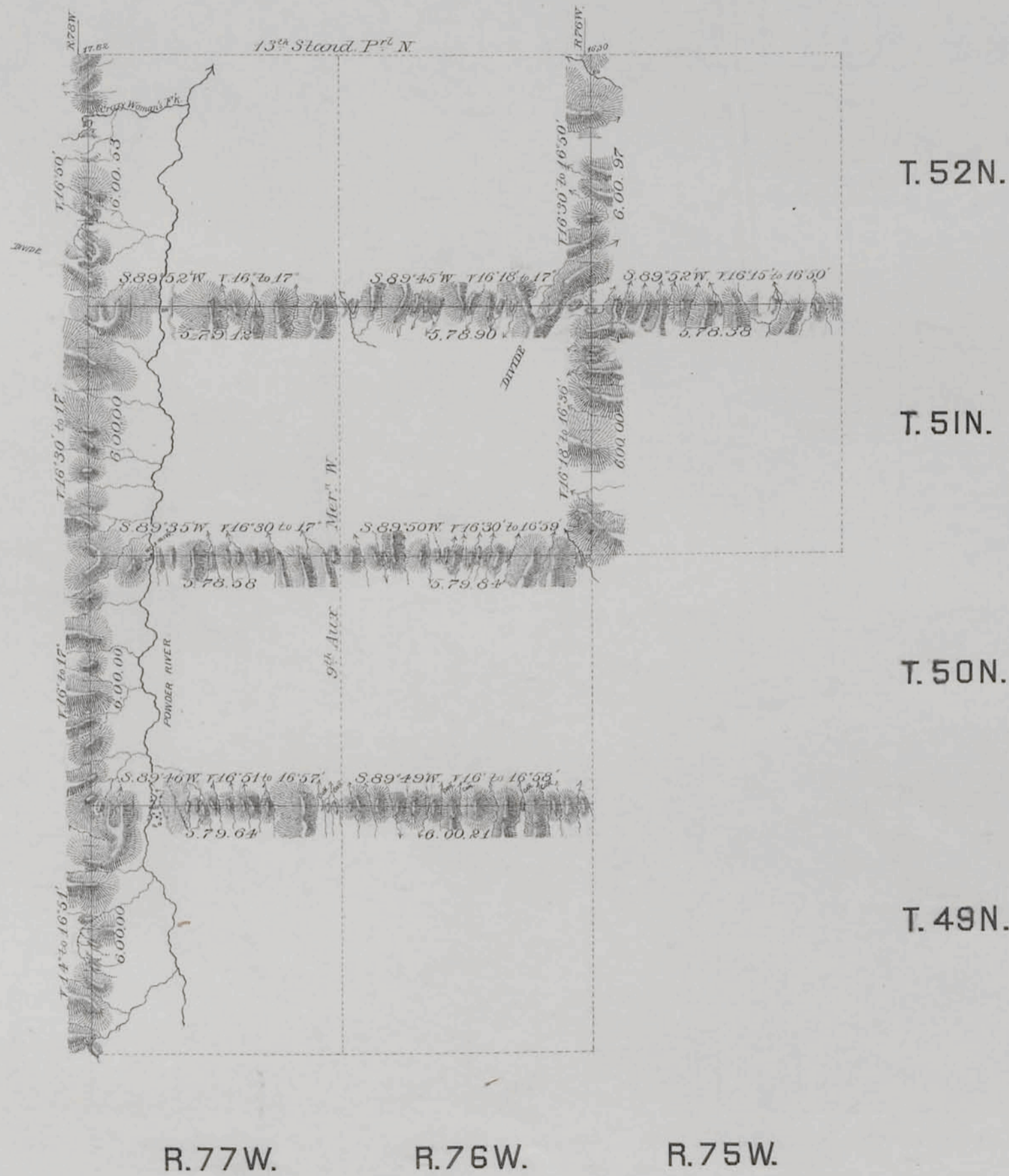
Edw. C. Davis
Sur. Gen.

(21)
Indexed

2245

EXTERIOR LINES.

Scale 3 miles to 1 inch. Magnetic Variation E.



Surveys Designated	By Whom Surveyed.	Date of Contract.	Amount of Surveys		When Surveyed.
			Secs.	Ts.	
Exterior Lines	E. F. Stahl	July 12 th 1882	77	76	17
Connections	"	"	34	12	"

I hereby certify that the above diagram of the Exterior lines of Tps. 51 & 52 N. R. 75, 76 & 77 W. & Tps. 49 & 50 N. R. 75 & 76 W. of the 6th Principal Meridian, Wyoming Territory, is strictly conformable to the field notes of the survey thereof on file in this Office, which have been examined and approved.
 Surveyor General's Office,
 Cheyenne, Wyoming August 15th 1883

Edw. C. David
 Sur. Gen.

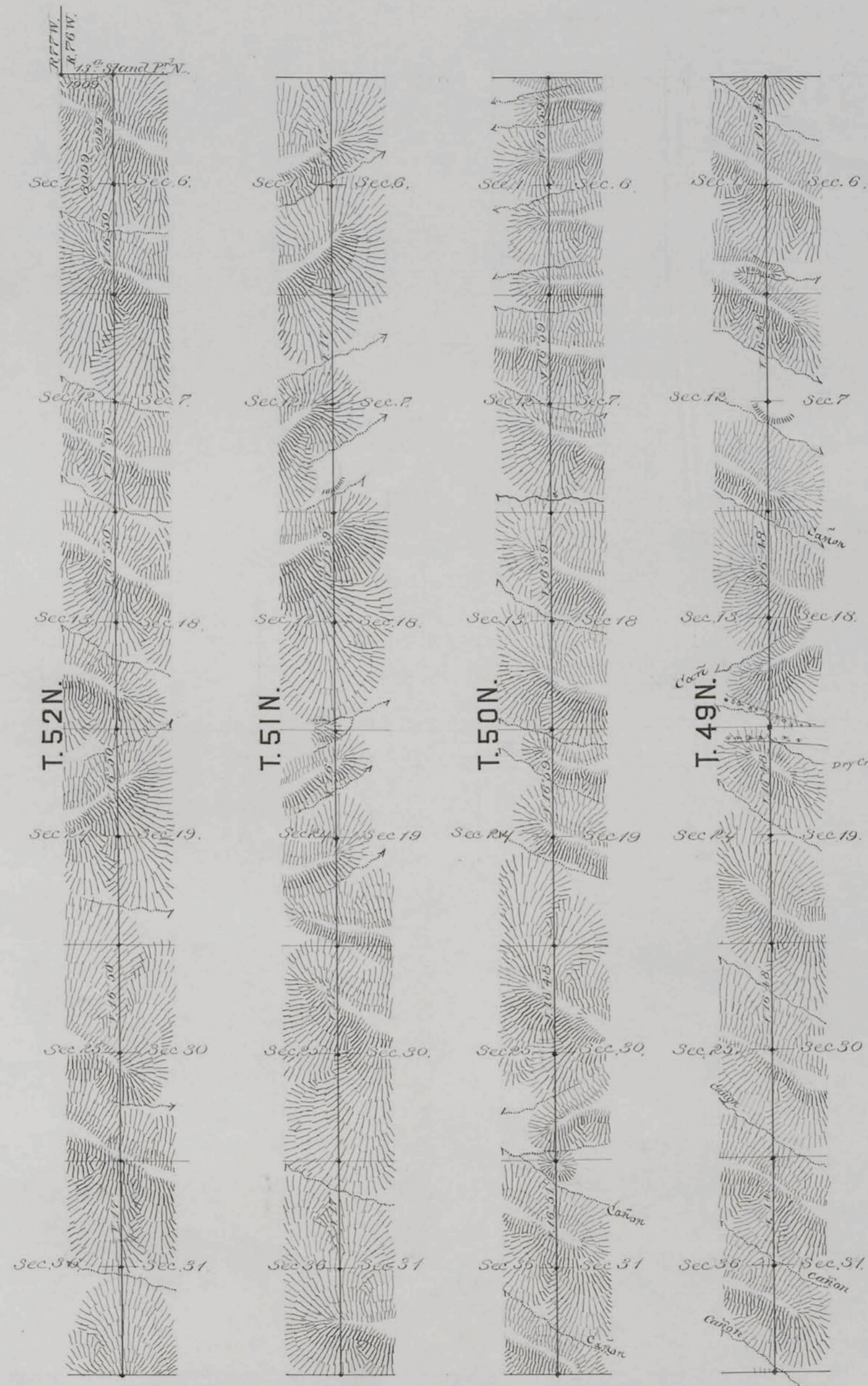
(21)
Index

2225

9TH AUXILIARY MERIDIAN WEST.

along W. boundaries of Tps 49, 50, 51, & 52 N., R. 76 W. of 6TH P.M. Wyoming Territory.
Scale 40 Chs. to 1 Inch. Magnetic Var. East.

72
7103



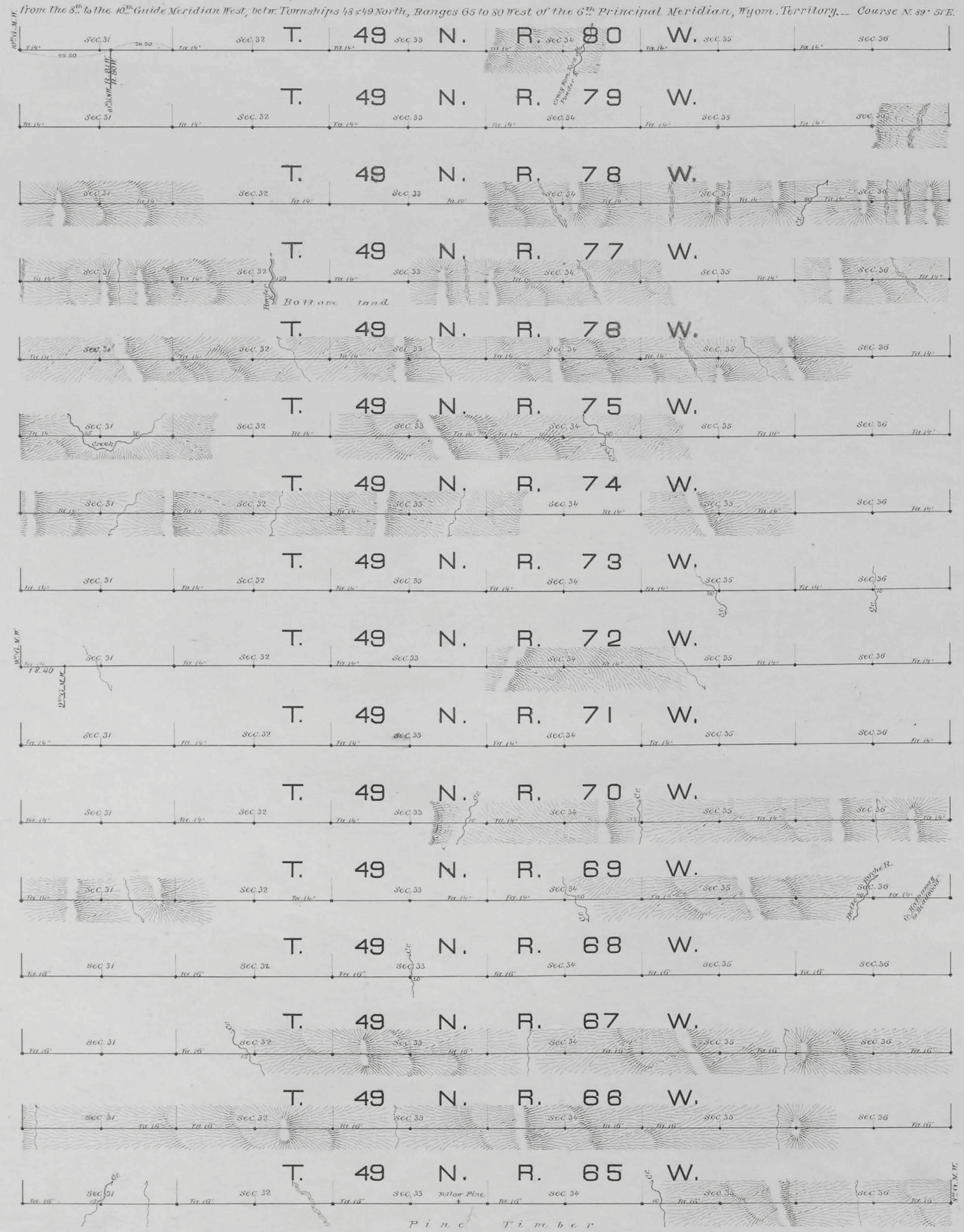
Surveys Designated	By Whom Surveyed	Date of Contract	Amount of Surveys			When Surveyed
			Mls.	Chs.	Lvs.	
9 th Aux ^y Mer ⁿ W.	E. F. Stahl	July 12 th 1882	24	0	99	March 15 th 1883
Connections	" " "	" " "	19	09	" " "	" " "

I hereby certify that the above diagram of the 9th Auxiliary Meridian W. along West boundaries of Tps 49, 50, 51 & 52 N., Range 76 West of the 6th P.M. Wyo: Ter^y is strictly conformable to the field notes of the survey thereof on file in this Office, which have been examined & approved.
Surveyor General's Office,
Cheyenne Wyoming Aug. 15th 1883

Edw. C. David Sur^y Gen^l

11. 845

12TH STANDARD PARALLEL NORTH.



Survey designated by whom surveyed	Date of Contract	Amount of Survey	When surveyed
12 th Standard Par. N.	Edw. F. Stahl	Aug. 12, 1880	96 00 00
			June & July 1881

The City certify that the above diagram of the 12th Standard Parallel N. from the 8th to the 10th Guide Meridian West, betw. T⁴⁸ & 49 N., Ranges 65 to 80 W. of the 6th Principal Meridian, Wyoming, is strictly conformable to the field notes of the survey thereof on file in this office, which have been examined and approved.

Surveyor General's Office,
Cheyenne, Wyo. Sept. 17th 1881.

Edw. C. David
Surveyor General.