

## T. 50 N., R. 83 W., Sixth Principal Meridian, Wyoming, Field Note Links

Plat Accession Number(s)	Year(s) of Survey	
		Township Subdivision Plats
8802	2020	<a href="https://www.wy.blm.gov/cadastral/countyplats/johnson/fieldnotes/t50nr83w_gp1028fn.pdf">https://www.wy.blm.gov/cadastral/countyplats/johnson/fieldnotes/t50nr83w_gp1028fn.pdf</a>
8790	2018	<a href="https://www.wy.blm.gov/cadastral/countyplats/johnson/fieldnotes/t50nr83w_gp1002fn.pdf">https://www.wy.blm.gov/cadastral/countyplats/johnson/fieldnotes/t50nr83w_gp1002fn.pdf</a>
8590	2011	<a href="https://www.wy.blm.gov/cadastral/countyplats/johnson/fieldnotes/t50nr83w_gp843fn.pdf">https://www.wy.blm.gov/cadastral/countyplats/johnson/fieldnotes/t50nr83w_gp843fn.pdf</a>
7161	1969	<a href="https://www.wy.blm.gov/cadastral/countyplats/johnson/fieldnotes/t50nr83w_gp328fn.pdf">https://www.wy.blm.gov/cadastral/countyplats/johnson/fieldnotes/t50nr83w_gp328fn.pdf</a>
-	1965	<a href="https://www.wy.blm.gov/cadastral/countyplats/johnson/fieldnotes/t50nr83w_gp262fn.pdf">https://www.wy.blm.gov/cadastral/countyplats/johnson/fieldnotes/t50nr83w_gp262fn.pdf</a>
6872	1960	<a href="https://www.wy.blm.gov/cadastral/countyplats/johnson/fieldnotes/t50nr83w_gp264fn_s1_2.pdf">https://www.wy.blm.gov/cadastral/countyplats/johnson/fieldnotes/t50nr83w_gp264fn_s1_2.pdf</a>
3281	1907-08	<a href="https://www.wy.blm.gov/cadastral/countyplats/johnson/fieldnotes/t50nr83w_c325fn-bnd.pdf">https://www.wy.blm.gov/cadastral/countyplats/johnson/fieldnotes/t50nr83w_c325fn-bnd.pdf</a>
4055	1908	<a href="https://www.wy.blm.gov/cadastral/countyplats/johnson/fieldnotes/t50-51nr83w_c325fn-res.pdf">https://www.wy.blm.gov/cadastral/countyplats/johnson/fieldnotes/t50-51nr83w_c325fn-res.pdf</a>
3281	1908	<a href="https://www.wy.blm.gov/cadastral/countyplats/johnson/fieldnotes/t50nr83w_c325fn.pdf">https://www.wy.blm.gov/cadastral/countyplats/johnson/fieldnotes/t50nr83w_c325fn.pdf</a>
3280	1881	<a href="https://www.wy.blm.gov/cadastral/countyplats/johnson/fieldnotes/t50nr83w_c112fn.pdf">https://www.wy.blm.gov/cadastral/countyplats/johnson/fieldnotes/t50nr83w_c112fn.pdf</a>

## T. 50 N., R. 83 W., Sixth Principal Meridian, Wyoming, Field Note Links

Plat Accession Number(s)	Year(s) of Survey	Township Exterior Plats
3282; 4914; 4915	1900-01	<a href="https://www.wy.blm.gov/cadastral/countyplats/bighorn/fieldnotes/ext2952_3.pdf">https://www.wy.blm.gov/cadastral/countyplats/bighorn/fieldnotes/ext2952_3.pdf</a>
4738	1897	<a href="https://www.wy.blm.gov/cadastral/countyplats/johnson/fieldnotes/ext2812.pdf">https://www.wy.blm.gov/cadastral/countyplats/johnson/fieldnotes/ext2812.pdf</a>
4738	1903	<a href="https://www.wy.blm.gov/cadastral/countyplats/johnson/fieldnotes/t50_51nr83w_c267fn_suspnd.pdf">https://www.wy.blm.gov/cadastral/countyplats/johnson/fieldnotes/t50_51nr83w_c267fn_suspnd.pdf</a>
3256	1881-82	<a href="https://www.wy.blm.gov/cadastral/countyplats/johnson/fieldnotes/ext3256.pdf">https://www.wy.blm.gov/cadastral/countyplats/johnson/fieldnotes/ext3256.pdf</a>

TOWNSHIP 50 NORTH, RANGE 83 WEST, OF THE SIXTH PRINCIPAL MERIDIAN, WYOMING.

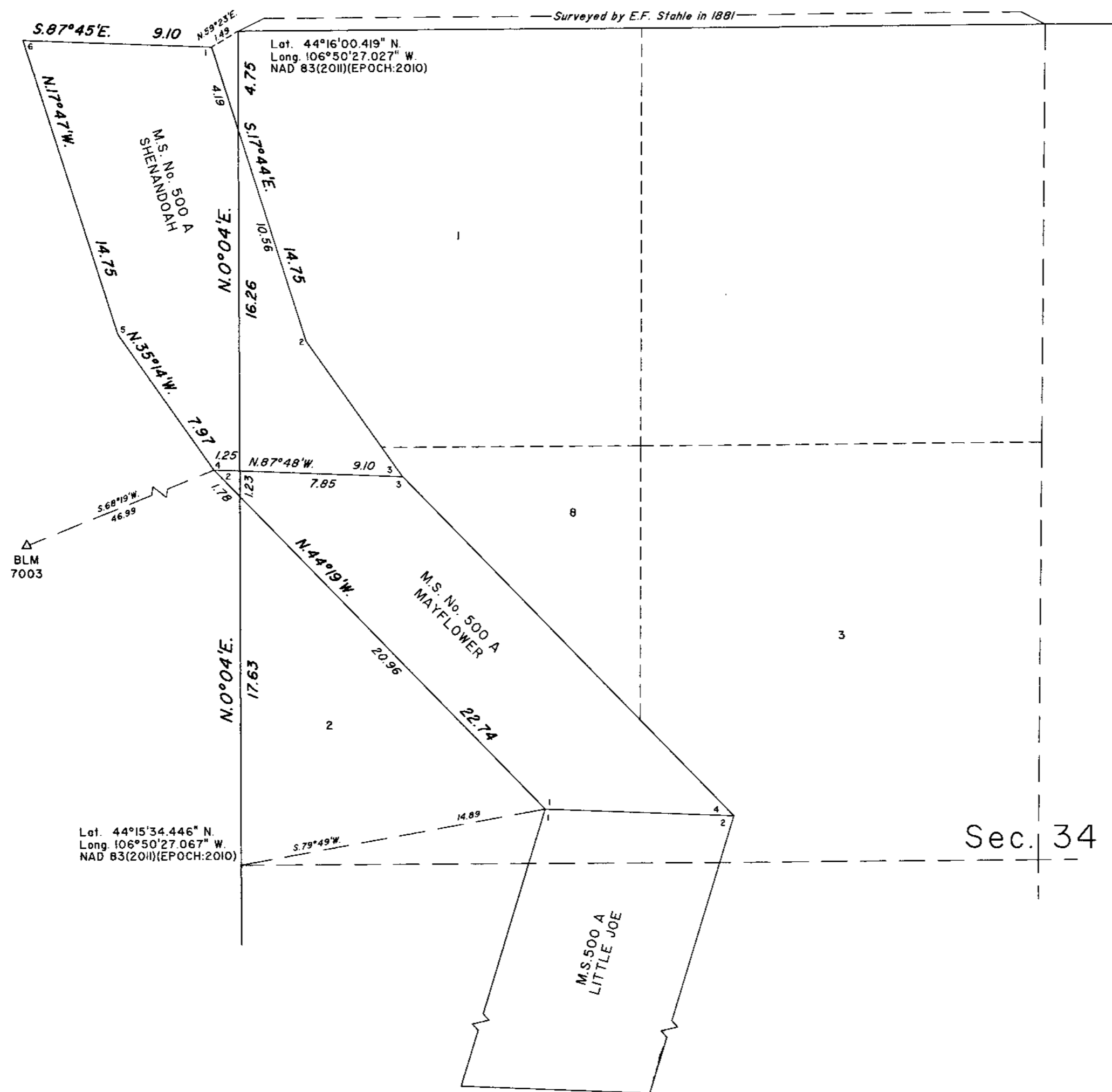
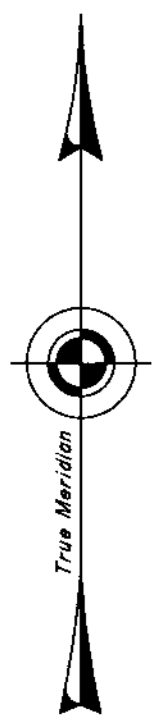
DEPENDENT RESURVEY

A history of surveys is contained in the field notes.

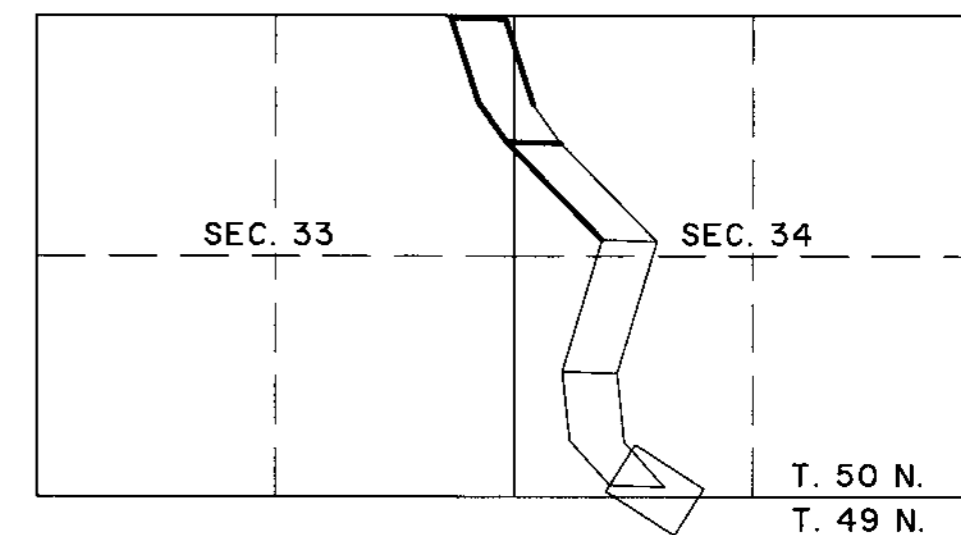
This plat represents the dependent resurvey of a portion of the subdivisional lines and portions of Mineral Survey No. 500 A, Shenandoah and Mayflower Lodes, T. 50 N., R. 83 W., Sixth Principal Meridian, Wyoming, designed to restore the corners in their true original locations according to the best available evidence.

Survey executed by James R. Gampetro, Cadastral Surveyor, beginning August 31, 2020, and completed September 3, 2020, pursuant to special instructions and assignment instructions dated August 11, 2020, for Group No. 1028, Wyoming.

NOTE: Lines not showing bearings and distances were surveyed by R.Z. McCoy in 1915.



LOCATION DIAGRAM



UNITED STATES DEPARTMENT OF THE INTERIOR  
BUREAU OF LAND MANAGEMENT

Cheyenne, Wyoming September 7, 2021

This plat is strictly conformable to the approved field notes, and the survey, having been correctly executed in accordance with the requirements of law and the regulations of this Bureau, is hereby accepted.

For the Director

Sonja S. Sparks  
Chief Cadastral Surveyor for Wyoming



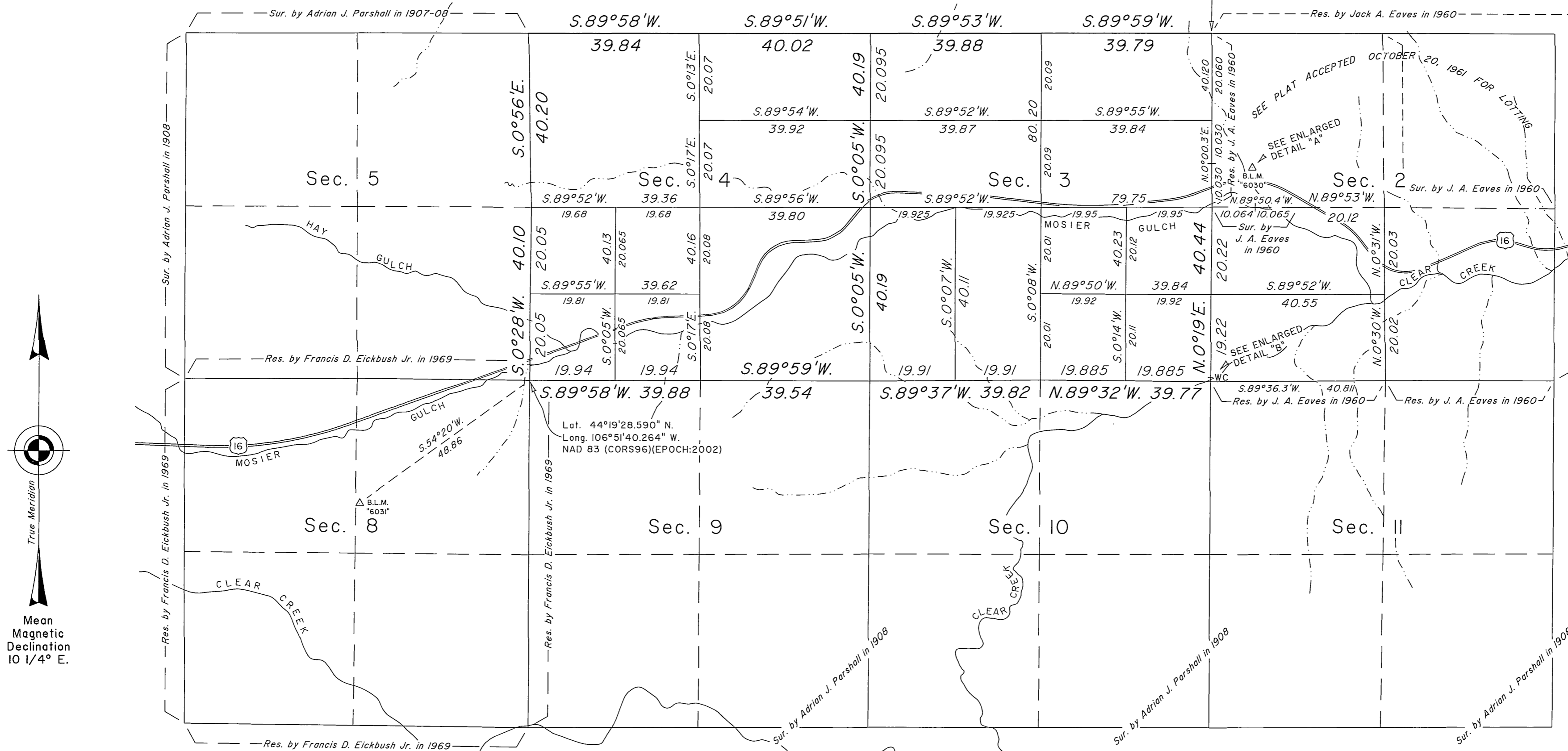
Scale in Chains



TOWNSHIP 50 NORTH, RANGE 83 WEST, OF THE SIXTH PRINCIPAL MERIDIAN, WYOMING.

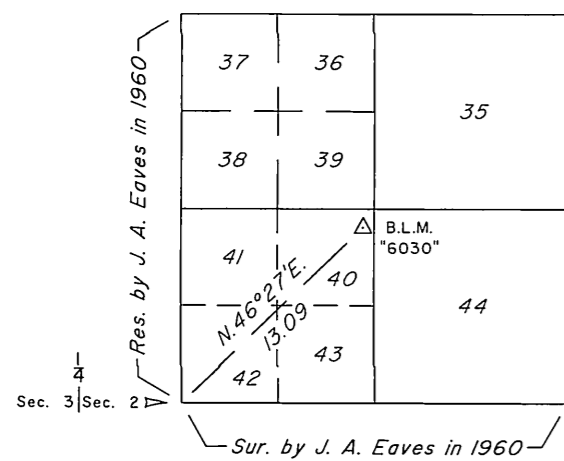
DEPENDENT RESURVEY AND SUBDIVISION OF SECTIONS

Lat. 44°20'21.049" N.  
Long. 106°49'15.732" W.  
NAD 83 (CORRS96)(EPOCH:2002)

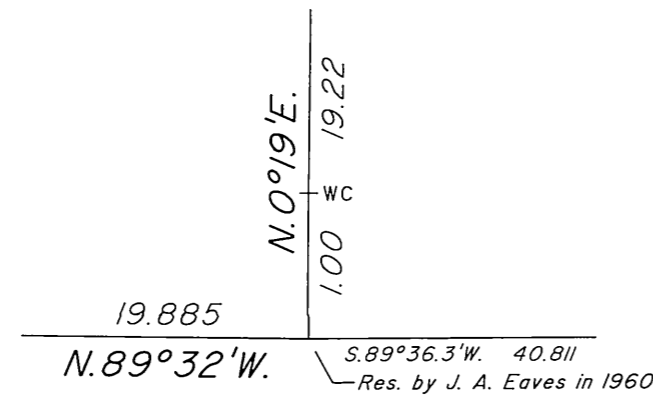


Scale in Chains

DETAIL "A"  
(NOT TO SCALE)



DETAIL "B"  
(NOT TO SCALE)



A history of surveys is contained in the field notes.

This plat represents the dependent resurvey of a portion of the north boundary and a portion of the subdivisional lines, designed to restore the corners in their true original locations according to the best available evidence, and the survey of the subdivision of certain sections, T. 50 N., R. 83 W., Sixth Principal Meridian, Wyoming.

Except as indicated hereon, the lotting and areas are as shown on the plat approved November 10, 1909, and the plat accepted October 20, 1961.

Survey executed by James E. Jacob, Cadastral Surveyor, beginning June 7, 2011, and completed August 29, 2011, pursuant to Special Instructions and Assignment Instructions dated May 18, 2011, for Group No. 843, Wyoming.

UNITED STATES DEPARTMENT OF THE INTERIOR  
BUREAU OF LAND MANAGEMENT

Cheyenne, Wyoming

November 14, 2012

This plat is strictly conformable to the approved field notes, and the survey, having been correctly executed in accordance with the requirements of law and the regulations of this Bureau, is hereby accepted.

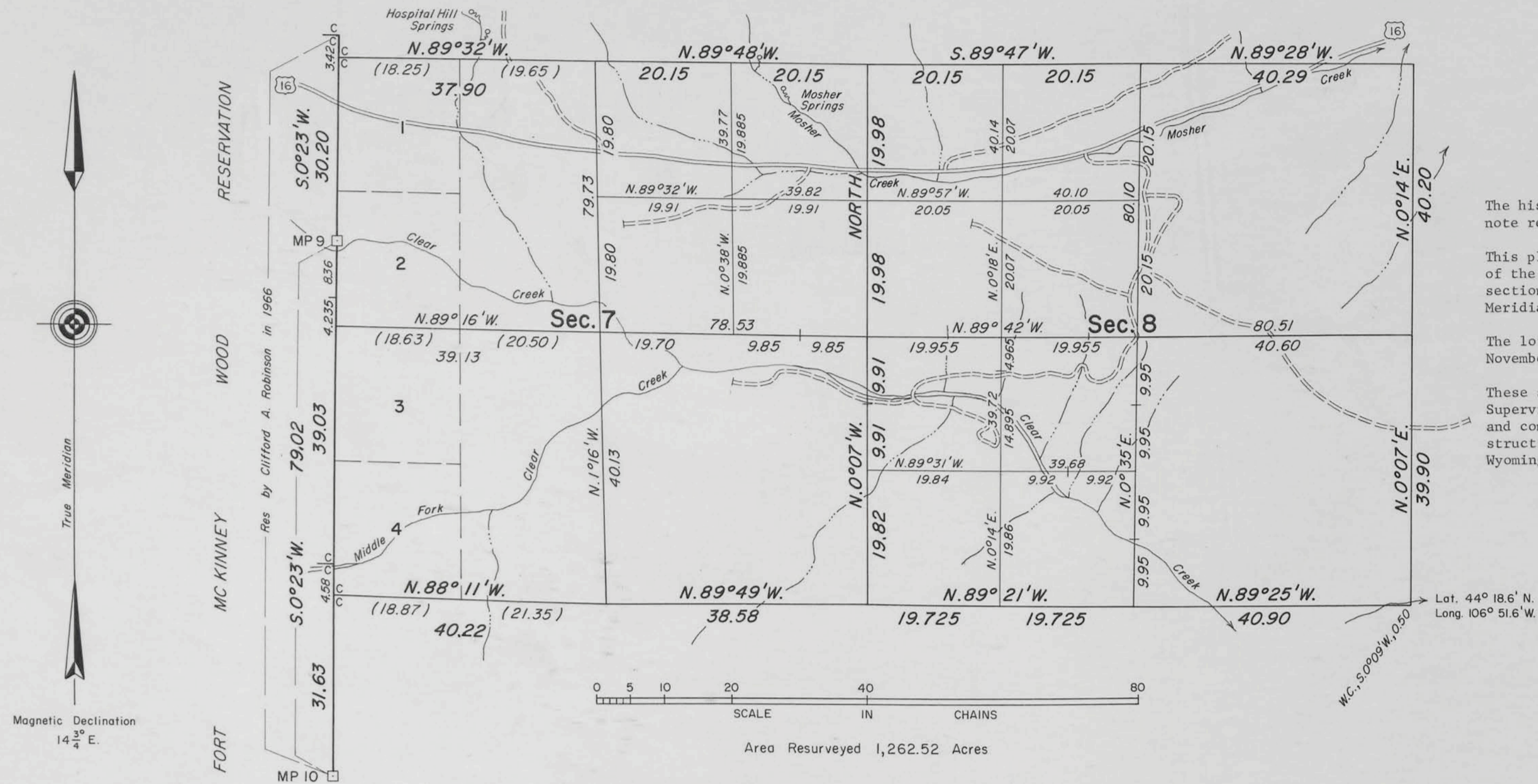
For the Director

John P. Lee  
Chief Cadastral Surveyor for Wyoming



# TOWNSHIP 50 NORTH, RANGE 83 WEST OF THE SIXTH PRINCIPAL MERIDIAN, WYOMING.

## RESURVEY AND PARTIAL SUBDIVISION OF SECTIONS



The history of previous surveys is contained in the field note record.

This plat represents a dependent resurvey of a portion of the subdivisional lines with a partial subdivision of sections 7 and 8, T. 50 N., R. 83 W., Sixth Principal Meridian, Wyoming.

The lottings and areas are as shown on the plat approved November 10, 1909.

These surveys were executed by Francis D. Eickbush, Jr., Supervisory Cadastral Surveyor, beginning October 8, 1969 and completed October 31, 1969, pursuant to Special Instructions dated September 17, 1969, for Group No. 328, Wyoming.

Lot. 44° 18.6' N.  
Long. 106° 51.6' W.

UNITED STATES DEPARTMENT OF THE INTERIOR  
BUREAU OF LAND MANAGEMENT  
Washington, D.C. April 20, 1972

This plat is strictly conformable to the approved field notes, and the survey, having been correctly executed in accordance with the requirements of law and the regulations of this Bureau, is hereby accepted.

For the Director

*Clark L. Sumner*

Chief, Division of Cadastral Survey

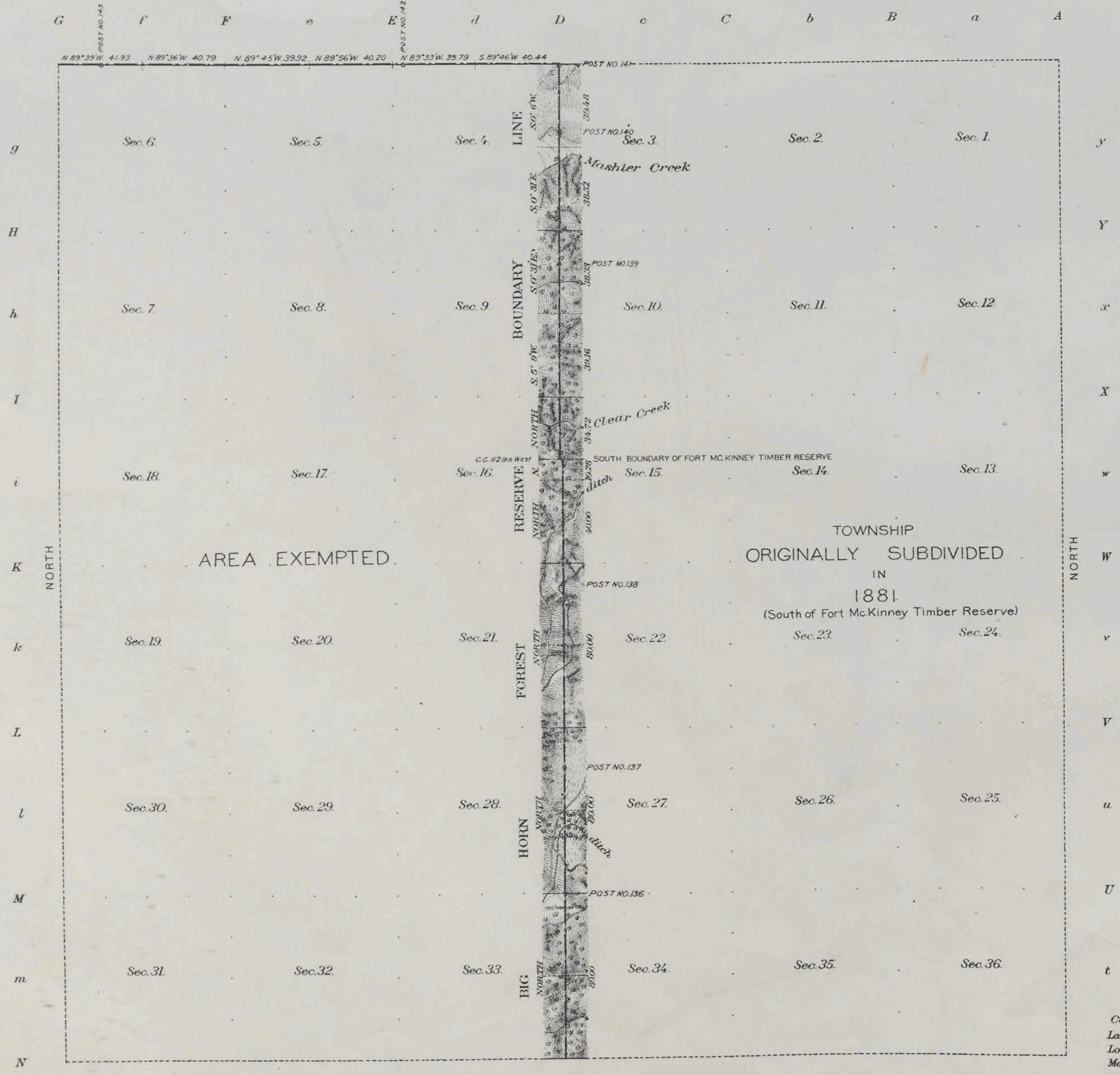
26

3282

RECEIVED S. G. O.  
AUG 11 1903  
CHEYENNE, WYO.

2 A

Township N<sup>o</sup> 50 North Range N<sup>o</sup> 83 West of the 6th. Principal Meridian, Wyoming.



Total number of Acres \_\_\_\_\_

Surveys Designated	By Whom Surveyed	Amount of Surveys M. Ch <sup>s</sup> Lc <sup>s</sup>	When Surveyed
Township lines	W. H. Thorn	6 0 28	Aug. 27-30, 1901
Subdivisions			

The above Map of Township N<sup>o</sup> 50 North of Range N<sup>o</sup> 83 West of the 6th. Principal Meridian, Wyoming is strictly conformable to the field notes of the survey thereof on file in this Office, which have been examined and approved.

U. S. Geological Survey  
Washington D. C.  
MAY 12 1903  
Chatsworth  
Director.

203B B



Fractional Township No 50 North, Range No 83 West of the Sixth Principal Meridian, Wyoming.



BIG HORN FOREST RESERVE

SURVEYED BY EDWARD F. STAHLER, 1881.

Areas in Acres.	
Public Land	898448 A.
Indian Reservation	
Indian Allotments	
Mineral Claims	
Water Surface	
<b>Total Area</b>	<b>898448 A.</b>

Scale 40 Chains to an inch  
Mean Magnetic Declination 16° 35' East.

Surveys Designated.	By Whom Surveyed.	Contract		Amount of Surveys			When Surveyed.	
		No.	Date	Mts.	chs.	lks.	Begun.	Completed.
North & West T. lines	Adrian U. Parrish	325	April 3, 1907.	8	25	59	Sept 25, 1907	Aug 19, 1908
Subdivisions.	"	"	"	23	55	61	Sept 2, 1908	Sept 17, 1908
Connections	"	"	"		63	04	"	"
Retracement E. Bdry.	"	"	"	2	28	60	Aug. 24, 1908	Aug. 24, 1908
South Boundary Ft. MS-	"	"	"				"	"
Kinney Wood Reservation.	"	"	"	5	77	48	August 22, 1908	August 24, 1908

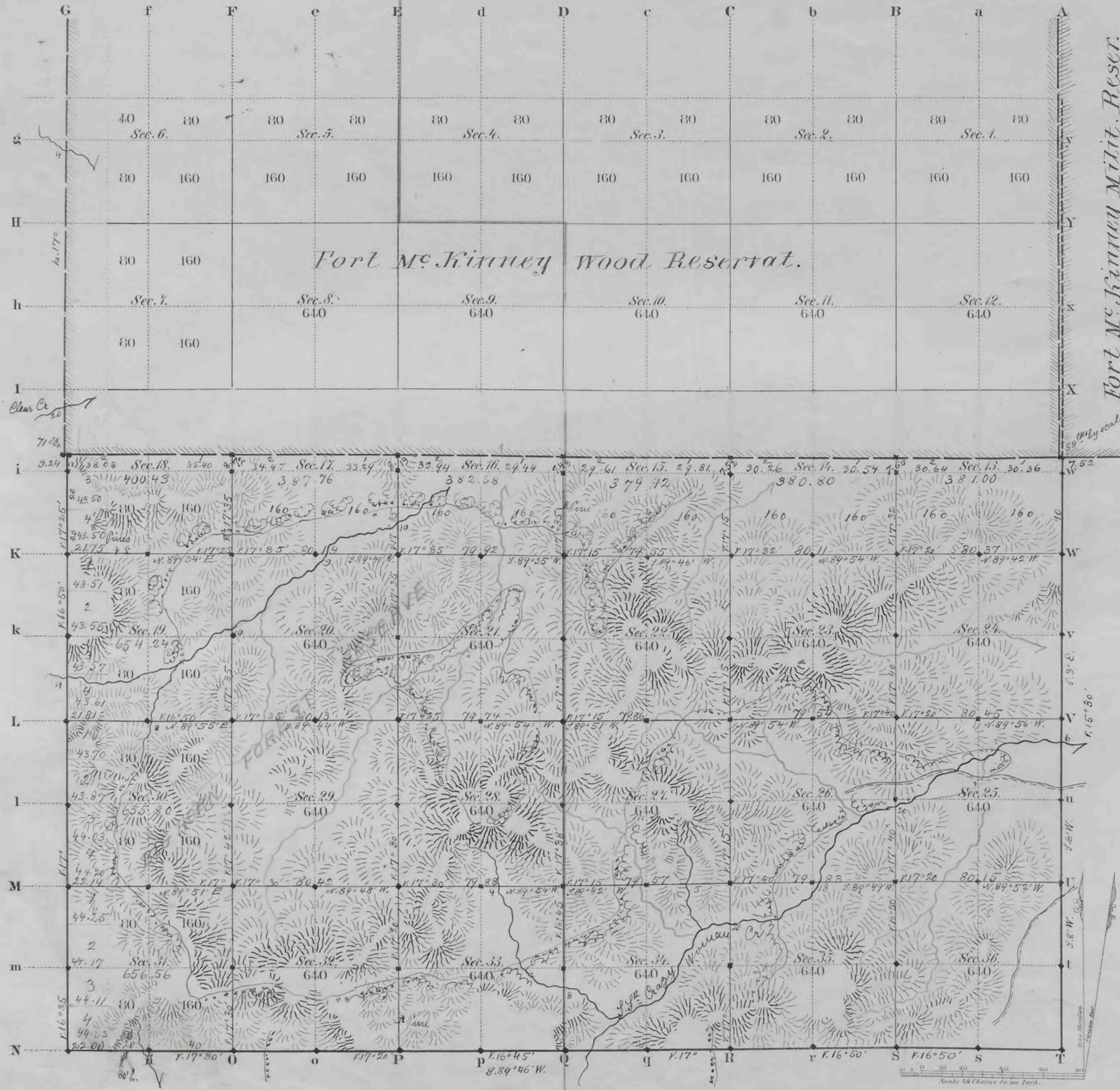
The above map of Township No. 50 North Range No 83 West of the Sixth Principal Meridian, Wyoming, is strictly conformable to the field notes of the survey thereof on file in this office, which have been examined and approved.

U.S. Surveyor General's Office,  
Cheyenne, Wyoming, November 10, 1909. } *Alphewes P. Johnson*  
Surveyor General.

2038 A

50 - 83 Accepted by the Hon. Commissioner on his letter "E" Dec. 16, 1909. Triplicate plat forwarded to the Buffalo Land Office Dec 20, 1909.

TOWNSHIP N<sup>o</sup> 50 NORTH, RANGE N<sup>o</sup> 83 WEST of the 6<sup>th</sup> Principal MERIDIAN.



Fort McKinney Milit. Reser.

Total number of Acres. 13878.39

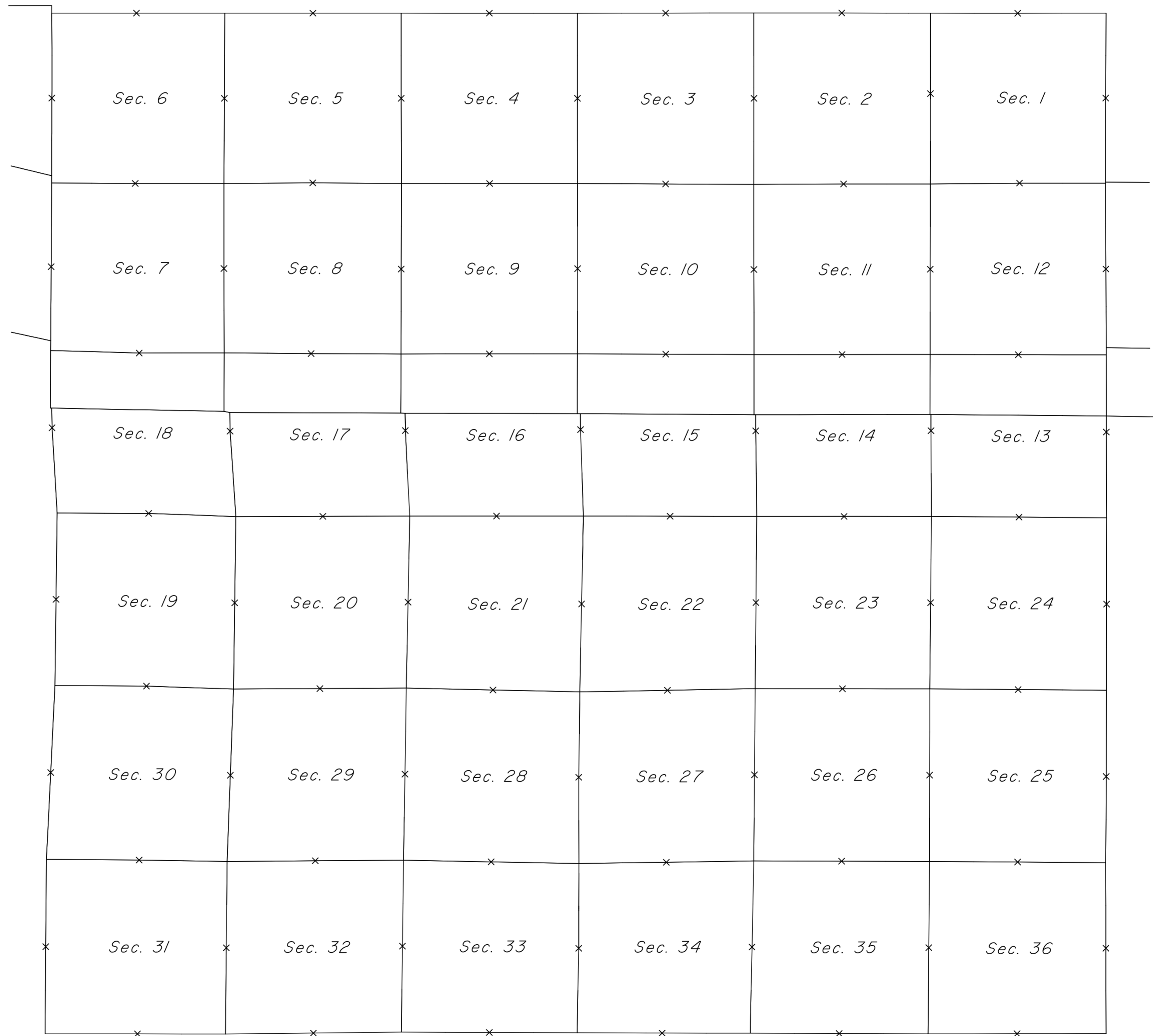
Surveys Designated	By Whom Surveyed	Date of Contract	Amount of Survey M <sup>ls</sup> C <sup>ts</sup> L <sup>ks</sup>	When Surveyed	Magnetic Declination
E. 2 <sup>d</sup> 7 <sup>th</sup> Township lines	Lawney & Draut	Dec. 12, 1880	73 18 76	October 1880	16° 55' East
Subdivisions	Ed. S. Stahl	April 24, 1881	36 04 43	July 7-9, 1881	17° 40' "
Connections					
W. Side of Reser.	Lawney & Draut	Dec. 12, 1880		January 15, 1881	

The above Map of Township N<sup>o</sup> 50 North of Range N<sup>o</sup> 83 West of the Sixth Principal Meridian Wyoming Territory is strictly conformable to the field notes of the survey thereof on file in this Office, which have been examined and approved.

Surveyor General's Office, Edw. C. Daulton  
Cheyenne Wyoming  
February 27<sup>th</sup> 1884

TOWNSHIP 50 NORTH, RANGE 83 WEST OF THE SIXTH PRINCIPAL MERIDIAN, WYOMING.

INDEX TO CORNER REMONUMENTATION WITHOUT SURVEY



NOT TO SCALE

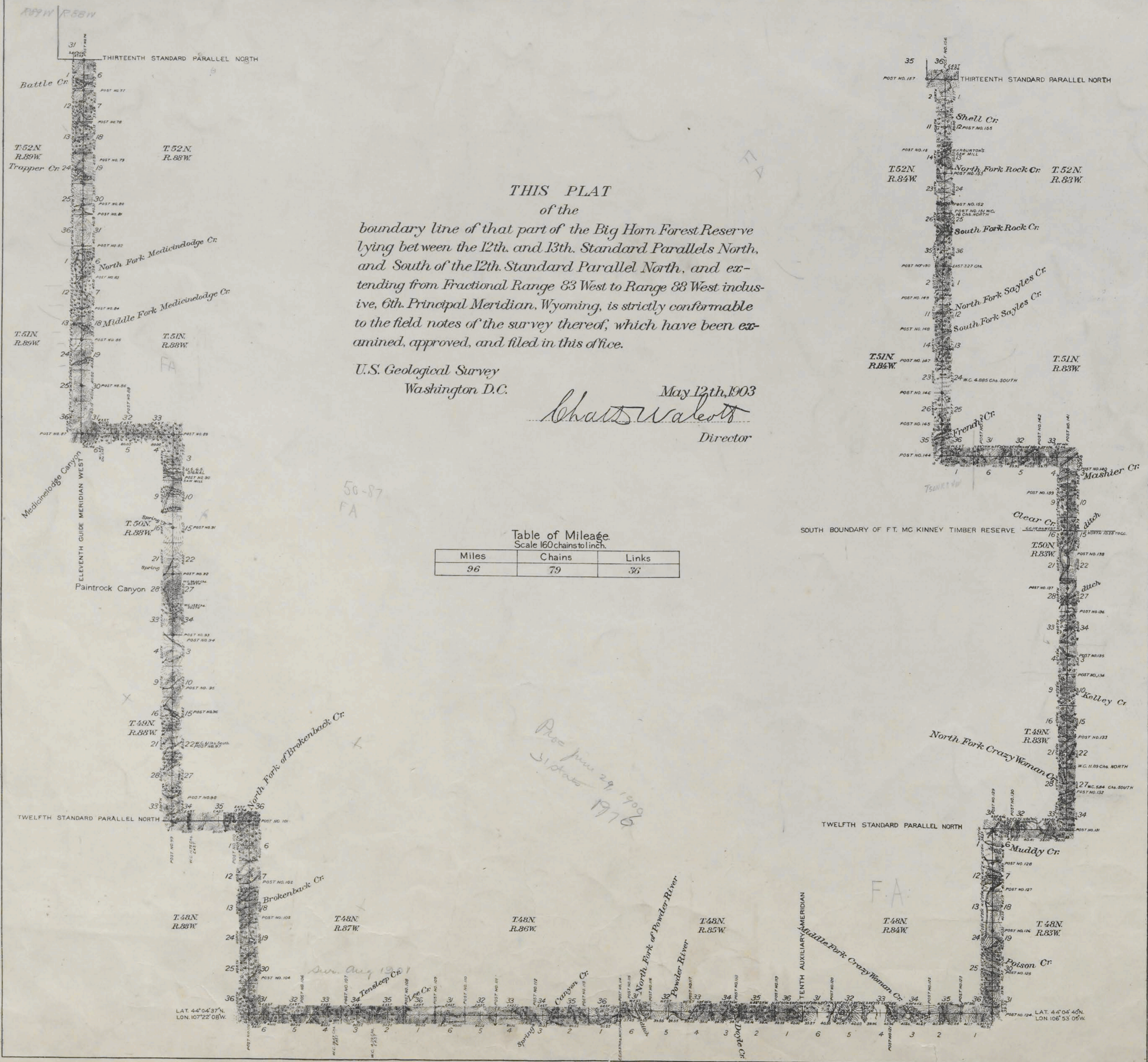
LEGEND

Remonumented Corner as Indicated



RECEIVED S. G. O.  
AUG 11 1903  
CHEYENNE, WYO.

4914



*THIS PLAT*  
of the  
boundary line of that part of the Big Horn Forest Reserve  
lying between the 12th. and 13th. Standard Parallels North,  
and South of the 12th. Standard Parallel North, and ex-  
tending from Fractional Range 83 West to Range 88 West inclu-  
sive, 6th. Principal Meridian, Wyoming, is strictly conformable  
to the field notes of the survey thereof, which have been ex-  
amined, approved, and filed in this office.

U.S. Geological Survey  
Washington D.C.  
May 12th, 1903  
*Chas. Walcott*  
Director

Table of Mileage  
Scale 160 chains to a link.

Miles	Chains	Links
96	79	36

50-87  
FA

Pro June 29 1900  
S. G. O. 1976

Surv. Aug 1901

2952

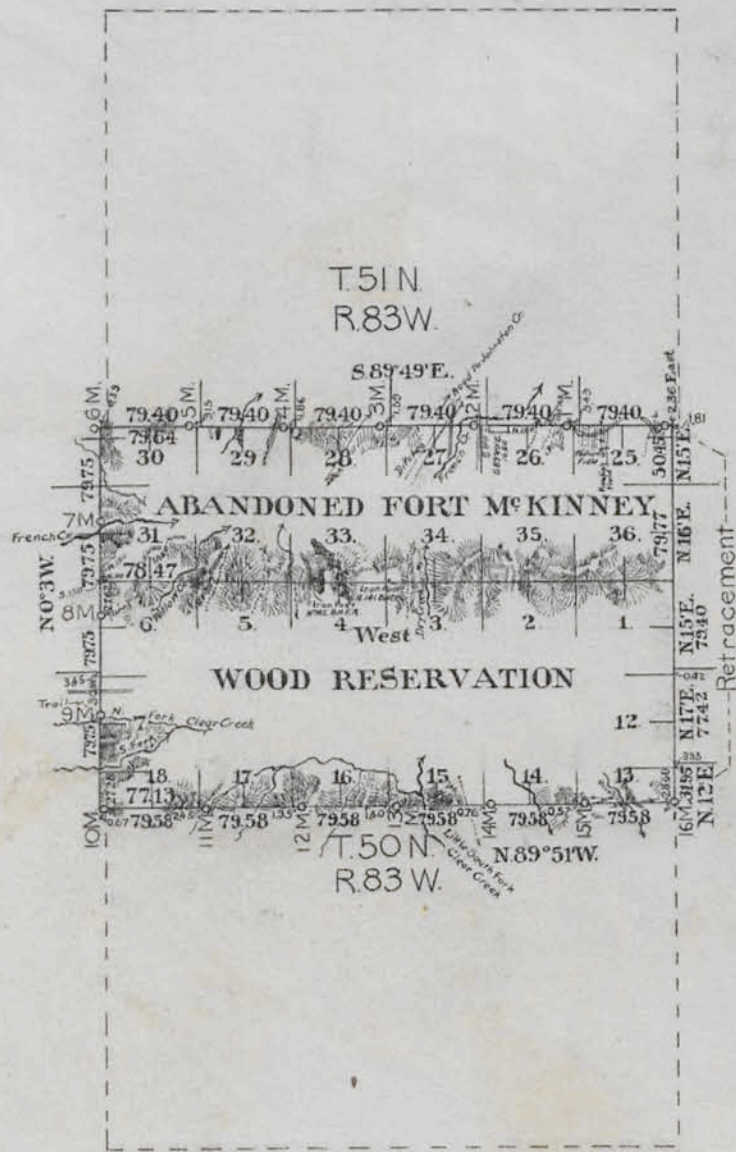
LAT. 44° 04' 37" N.  
LON. 107° 22' 08" W.

LAT. 44° 04' 40" N.  
LON. 106° 53' 05" W.



# TOWNSHIP EXTERIORS

Scale: 1 inch to 160 chains.



This Plat  
of the  
North, East, South and West Boundaries  
of the Abandoned Fort McKinney Wood  
Reservation

and the  
North Boundary of Township 50 North,  
Range 83 West of the Sixth Principal  
Meridian, Wyoming, is strictly con-  
formable to the field notes of the  
survey thereof

by  
Adrian J. Parshall USDS  
under his  
Contract N° 325  
dated April 3, 1907.

which have been examined, approved  
and filed in this office.  
U.S. Surv. Gen'l's Office,  
Cheyenne, Wyoming.  
November 10, 1909.

*Alpheus P. Hamon*  
U. S. Surv Gen'l.

Table of Mileage

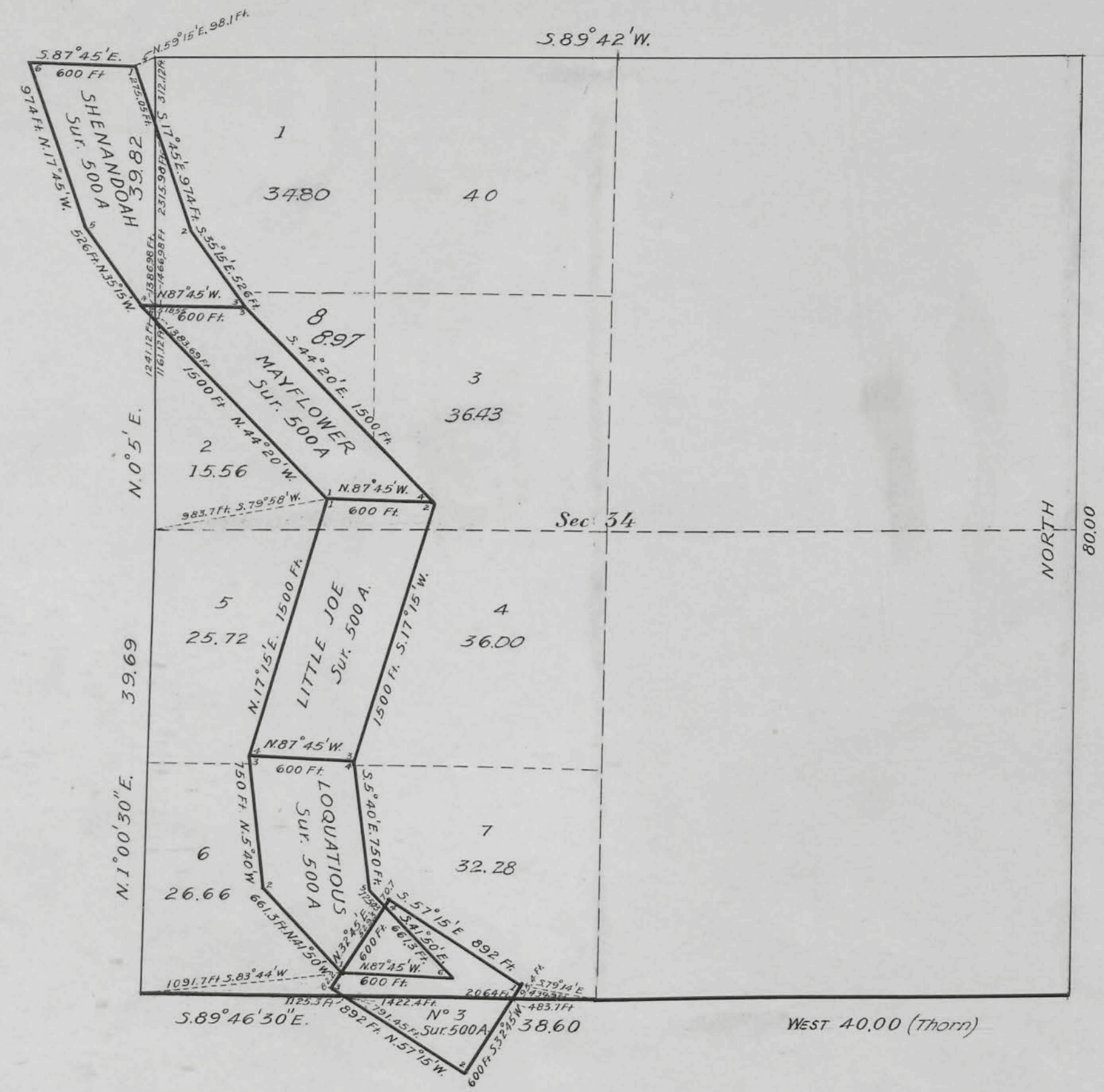
Surveys Designated	Amount	When Surveyed
Reservation Lines	19 75 24	Aug. 10-24, 1908.
Township Lines	5 78 47	Sept 25, 1907-Aug 9, 1908
Connecting Lines	29 43	Aug. 10-24, 1908.
Retracing Lines	3 78 99	Aug. 24, 1908.

*Accepted by the Hon. Commissioner  
in his letter "E" Dec. 16, 1909.*





Supplemental Plat N° 1  
Township N° 50 North Range N° 83 West of the Sixth Principal Meridian Wyoming  
Scale 1 Inch = 10 Chains



This Supplemental plat of T. 50 N., R. 83 W., 6th P.M., survey and plat approved February 27, 1884, is prepared in accordance with directions given Commissioner's letter "N" Buffalo 014198, dated July 25, 1919, for the purpose of showing the lots in Section 34, made fractional by the invasion of patented Mineral Survey No. 500-A, and is hereby approved.

U.S. Surveyor General's Office,  
Cheyenne, Wyoming.  
October 15, 1921

*Charles L. Decker*  
Surveyor General.

## T. 50 N., R. 83 W., Sixth Principal Meridian, Wyoming, Mineral Survey Links

Plat Accession Number(s)	Year(s) of Survey	Mineral Survey No. 500 (Sections 33 and 34)
5892; 5893	1915	<a href="https://www.wy.blm.gov/cadastral/mineralsurvey/500-549/ms500.pdf">https://www.wy.blm.gov/cadastral/mineralsurvey/500-549/ms500.pdf</a>