

## T. 12 N., R. 69 W., Sixth Principal Meridian, Wyoming, Field Note Links

Plat Accession Number(s)	Year(s) of Survey	
Township Subdivision Plats		
8773	2019	See plat for field notes.
8497	2004	<a href="https://www.wy.blm.gov/cadastral/countyplats/laramie/fieldnotes/t12nr69w_remon.pdf">https://www.wy.blm.gov/cadastral/countyplats/laramie/fieldnotes/t12nr69w_remon.pdf</a>
420	1868	<a href="https://www.wy.blm.gov/cadastral/countyplats/laramie/fieldnotes/t12nr69w_c000fn.pdf">https://www.wy.blm.gov/cadastral/countyplats/laramie/fieldnotes/t12nr69w_c000fn.pdf</a>
Township Exterior Plats		
1	1867	<a href="https://www.wy.blm.gov/cadastral/countyplats/laramie/fieldnotes/ext0001.pdf">https://www.wy.blm.gov/cadastral/countyplats/laramie/fieldnotes/ext0001.pdf</a>
-	1874	<a href="https://www.wy.blm.gov/cadastral/countyplats/laramie/fieldnotes/ext0001b.pdf">https://www.wy.blm.gov/cadastral/countyplats/laramie/fieldnotes/ext0001b.pdf</a>
State Boundary		
-	2004	See plat for field notes.
5983	1873	<a href="https://www.wy.blm.gov/cadastral/countyplats/laramie/fieldnotes/sb_mp30-59.pdf">https://www.wy.blm.gov/cadastral/countyplats/laramie/fieldnotes/sb_mp30-59.pdf</a>
-	1873	<a href="https://www.wy.blm.gov/cadastral/countyplats/laramie/fieldnotes/sb_astro_notes.pdf">https://www.wy.blm.gov/cadastral/countyplats/laramie/fieldnotes/sb_astro_notes.pdf</a>

TOWNSHIP 12 NORTH, RANGE 69 WEST, OF THE SIXTH PRINCIPAL MERIDIAN, WYOMING.

LOCATION AND REMONUMENTATION OF CERTAIN CORNERS

CORNER DESCRIPTIONS

Ⓐ The std. cor. of secs. 31 and 36, T. 13 N., Rs. 69 and 70 W., monumented with a stainless steel post, 2½ ins. diam., firmly set, projecting 3 ins. above the ground, in a collar of stone, mkd. stone buried alongside, with brass cap mkd.

T13N  
S C  
R70W | R69W  
S 36 | S 31  
S 1  
T12N R69W  
2004

This cor. was erroneously described as the closing cor. of secs. 1 and 6, T. 12 N., Rs. 69 and 70 W.

Cor. is located at the cor. of fences extending N., W. and S.

The geographic position of this cor. is based on NAD83(2011) (EPOCH:2010) and determined by Global Positioning Methods is:

Latitude: 41°02'43.770" N. Longitude: 105°10'25.111" W.

Ⓑ The closing cor. of secs. 1 and 6, T. 12 N., Rs. 69 and 70 W., monumented with a limestone, 20 x 15 x 4 ins., firmly set, plainly mkd. CC on S. face, 6 notches on E. and W. edges.

At the corner point

Set a stainless steel post, 28 ins. long, 2½ ins. diam., 24 ins. in the ground, in a collar of stone, with brass cap mkd.

T13N R69W  
S 31  
C | C  
S 1 S 6  
T12N  
R70W R69W  
2019

Deposit the mkd. stone alongside the stainless steel post.

Set a steel fence post alongside the stainless steel post.

Cor. is located on gentle rolling ground in tall grass.

From this point, a steel reinforcement rod, 5/8 in. diam., projecting 3 ins. above the ground, with no cap attached, bears NE., 4 links dist.

The geographic position of this cor. is based on NAD83(2011) (EPOCH:2010) and determined by Global Positioning Methods is:

Latitude: 41°02'43.733" N. Longitude: 105°10'19.580" W.

SURVEY INFORMATION AND CERTIFICATE

This plat represents the entire record of the remonumentation of the closing corner of sections 1 and 6, Township 12 North, Ranges 69 and 70 West, and corrects the record of remonumentation of certain corners, Group 850, Wyoming, approved January 16, 2009, from the remonumentation of the closing corner of sections 1 and 6, Township 12 North, Ranges 69 and 70 West, to the standard corner of sections 31 and 36, Township 13 North, Ranges 69 and 70 West, Sixth Principal Meridian, Wyoming.

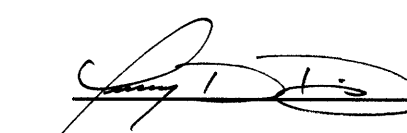
The history of surveys pertaining to this remonumentation is as follows:

1867 - W. Ashley surveyed the north boundary.

1868 - E.D. Bright surveyed the subdivisional lines.

2009 - D.A. Wilson remonumented certain corners.

I, Jeremy D. Davis, Cadastral Surveyor, HEREBY CERTIFY upon honor that, in pursuance of special instructions dated June 13, 2011 and assignment instructions dated May, 26, 2019, for Group No. 850, Wyoming, I have remonumented the closing corner of secs. 1 and 6, Township 12 North, Ranges 69 and 70 West, Sixth Principal Meridian, Wyoming, and that this plat in one sheet, represents the entire record of this remonumentation. Field work commenced and completed July 25, 2019, and has been made in strict conformity with the special instructions, the Manual of Instructions for the Survey of Public Lands of the United States 2009, and in the specific manner described hereon.


  
Jeremy D. Davis  
Cadastral Surveyor

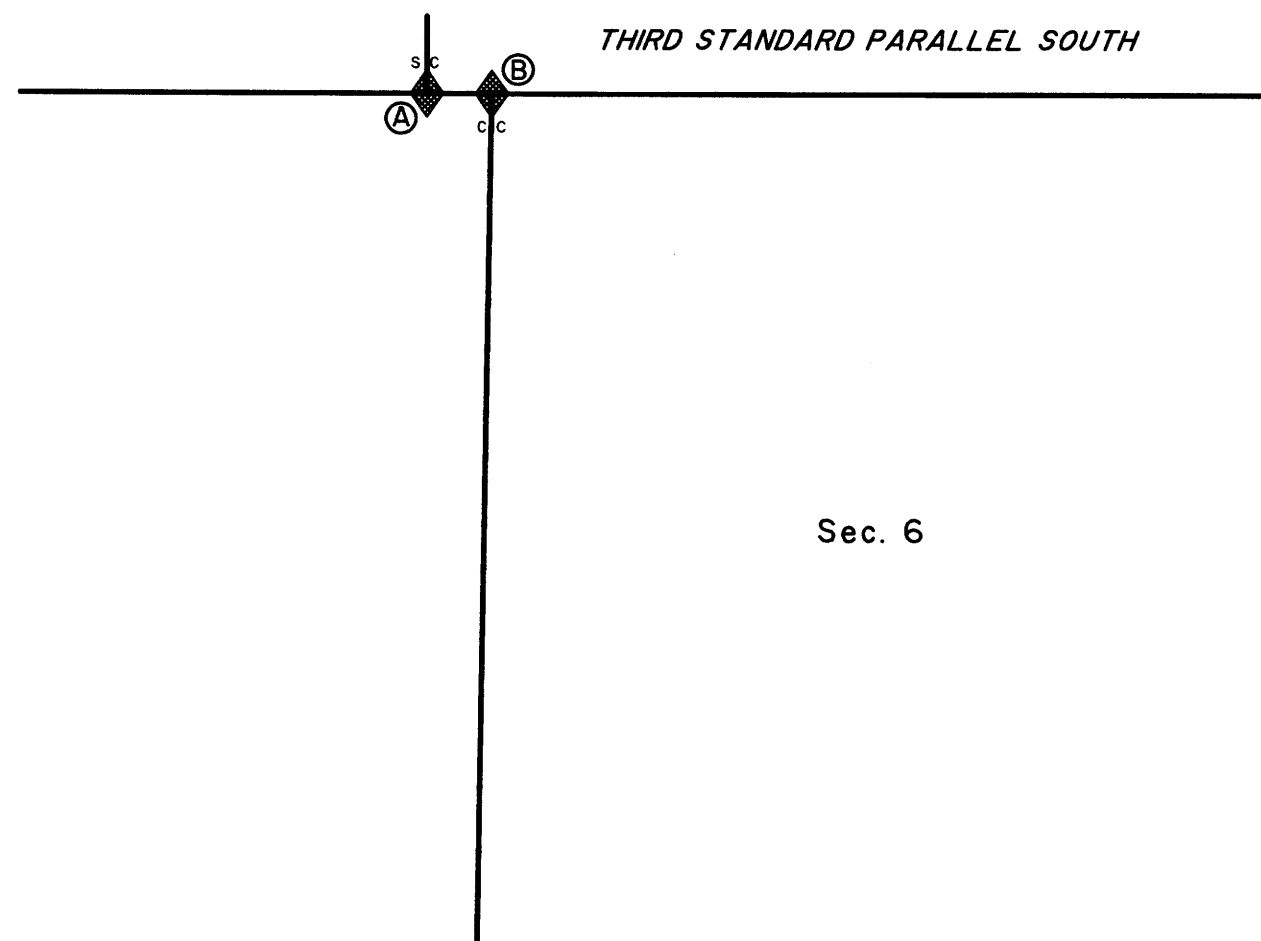
March 25, 2020  
Date

UNITED STATES DEPARTMENT OF THE INTERIOR  
BUREAU OF LAND MANAGEMENT

Cheyenne, Wyoming March 25, 2020

This plat is strictly conformable to the approved field notes, and the survey, having been correctly executed in accordance with the requirements of law and the regulations of this Bureau, is hereby accepted.

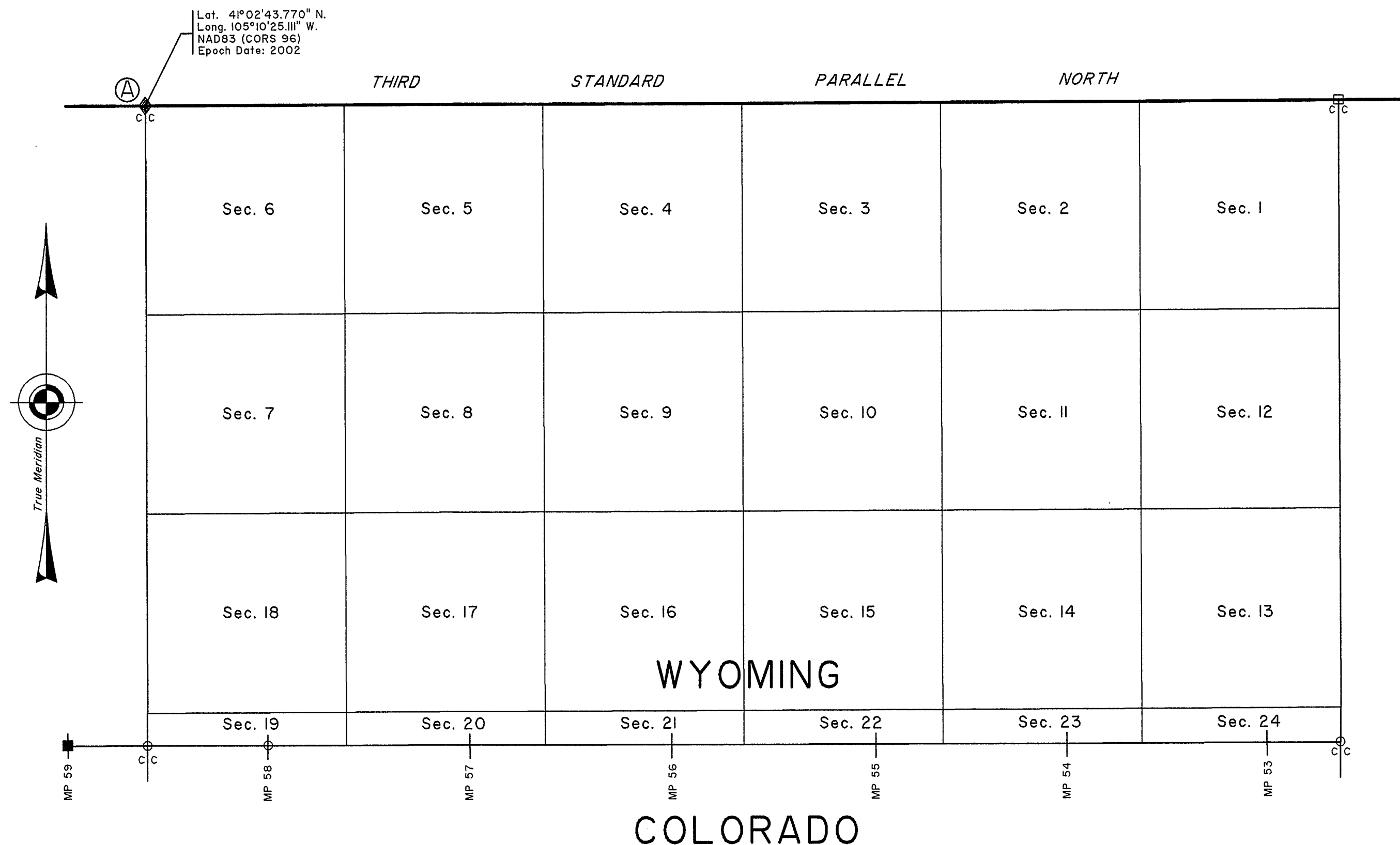
For the Director  
  
Sonja S. Sparks  
Chief Cadastral Surveyor for Wyoming



◆ Corner Remonumented

TOWNSHIP 12 NORTH, RANGE 69 WEST, OF THE SIXTH PRINCIPAL MERIDIAN, WYOMING.

LOCATION AND REMONUMENTATION OF CERTAIN CORNERS



SURVEY INFORMATION AND CERTIFICATE

This plat represents the entire record of the location and remonumentation of certain corners, Township 12 North, Range 69 West, Sixth Principal Meridian, Wyoming.

The remonumentation of certain corner points established by W.M. Ashley, U.S. Deputy Surveyor, in 1867, was made at the request of the Geographic Coordinate Data Base (GCDB) Program Manager, Washington Office, Bureau of Land Management.

The geographic coordinates, in NAD 83 (CORS 96), epoch date 2002, for the corner shown, was determined by Global Positioning System (GPS) observations.

I, Darryl A. Wilson, Colorado Registered Professional Land Surveyor #23059, HEREBY CERTIFY upon honor that, in pursuance of Special Instructions dated June 11, 1990, and Assignment Instructions dated September 20, 2004, for Group No. 540, Wyoming, I have located and remonumented certain corners which are represented on this plat, Township 12 North, Range 68 West, Sixth Principal Meridian, Wyoming. Survey commenced October 4, 2004, and completed October 10, 2004, and has been made in strict conformity with the special instructions, the Manual of Instructions for the Survey of the Public Lands of the United States, 1973, and in specific manner described hereon.

*Darryl A. Wilson*  
Darryl A. Wilson  
Surveyor

January 15, 2009  
Date

CORNER DESCRIPTION

A The closing cor. of Tps. 12 N., Rs. 69 and 70 W., monumented with a limestone, 20 x 18 x 16 ins., firmly set 8 ins. in the ground, plainly mkd. 4 grooves on the S. face, and an X chiseled on top.

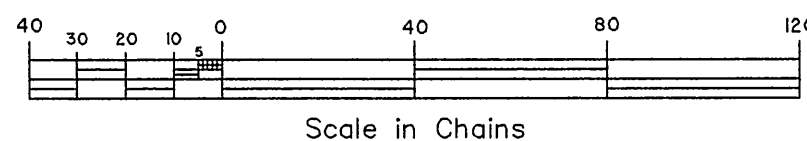
At the corner point

Set a stainless steel post, 28 ins. long, 2 1/2 ins. diam., 25 ins. in the ground, in a collar of stone, with brass cap mkd.

T13N R69W  
S 31  
SI S6  
R70W R69W  
T12N  
CC  
2004

Cor. is located in a corner of fences extending N., W. and S.

From this point a scattered mound of stone, bears W., 6.10 chs. dist.



LEGEND

- ◆ Remonumented
- Remonumented Under Group No. 750, Colorado
- Existing BLM Brass Cap
- Searched for Corner (Not Found)

UNITED STATES DEPARTMENT OF THE INTERIOR  
BUREAU OF LAND MANAGEMENT

Cheyenne, Wyoming

January 15, 2009

This plat representing the entire record of this survey, having been correctly executed in accordance with the requirements of law and the regulations of this Bureau, is hereby accepted.

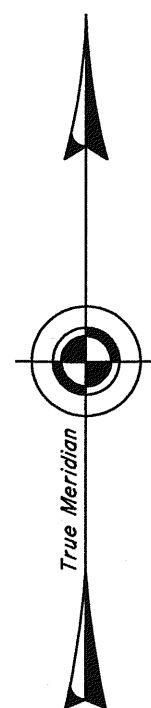
For the Director

*John P. Lee*  
John P. Lee  
Chief Cadastral Surveyor for Wyoming

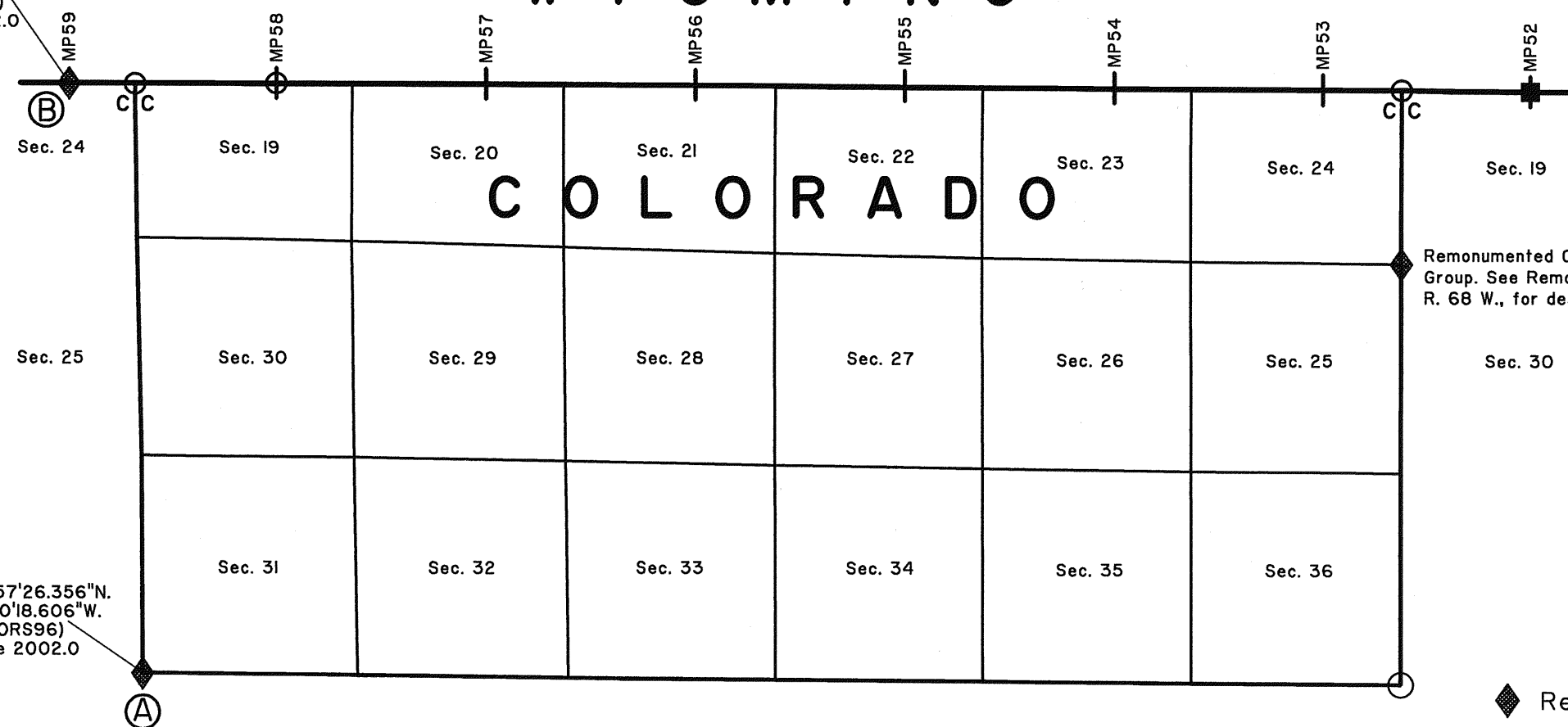
TOWNSHIP 12 NORTH, RANGE 69 WEST, OF THE SIXTH PRINCIPAL MERIDIAN, COLORADO.  
LOCATION AND REMONUMENTATION OF CERTAIN CORNERS

TOWNSHIP INDEX DIAGRAM  
(Diagram based upon the current BLM Geographic Coordinate Data Base)

Lat. 40°59'53.997"N.  
Long. 105°10'44.466"W.  
NAD 83 (CORS96)  
Epoch. Date 2002.0



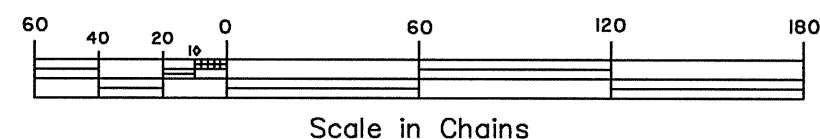
Lat. 40°57'26.356"N.  
Long. 105°10'18.606"W.  
NAD 83 (CORS96)  
Epoch. Date 2002.0



Remonumented Concurrently Under This Same Group. See Remonumentation Plat for T. 12 N., R. 69 W., for description.

LEGEND

- ◆ Remonumented
- Remonumented Under Group No. 540, Wyoming
- Searched for Corner (Not Found)



HISTORY

The Third Standard Parallel North, (North Boundary) through Range 69 West, was surveyed by F. Case in 1867. The east, west and south boundaries of the township were surveyed by W.M. Ashley in 1867. The subdivisional lines of the township were surveyed by E.D. Bright in 1868. The south boundary of Wyoming (Colorado-Wyoming State Boundary) through this township, was surveyed by A.V. Richards in 1873. In 1874, A.M. Fahringer surveyed from south to north, and monumented the closing corners against the state boundary through this township.

CORNER DESCRIPTIONS

Ⓐ The cor. of Tps. 11 and 12 N., Rgs. 69 and 70 W. monumented with an unmarked granite stone 18 x 12 x 10 ins., firmly set in the middle of a collar of stone, 3 foot base by 15 ins. high.

At the corner point

Set a stainless steel post, 28 ins. long, 2 1/2 ins. diam., 19 ins. in the ground to bedrock, with brass cap mkd.

T12N  
S36 | S31  
R70W | S1 | S6 R69W  
T11N  
2004

Place original set stone in collar of stone, 3 foot base to top of brass cap.

Ⓑ Mile Post 59, monumented with an aluminum rod, 3/4 in. diam., with aluminum cap, 3 in. diam., projecting 20 ins. above ground, in the center of a mound of stone, 3 1/2 feet diam., 20 ins. high. The original rotted wooden post found lying across mound of stone. Aluminum cap is mkd.

American West LS 27269  
MP 59  
WYO  
COLO  
2004

From which

A rebar, 3/4 in. diam., projecting 4 ins. above ground, with plastic cap mkd. American West PLS-27269, bears S. 28° E., 7.5 lks. dist.

A rebar, 3/4 in. diam., projecting 4 ins. above ground, with plastic cap mkd. American West PLS-27269, bears S. 44 ° W., 10.5 lks. dist.

This plat represents the entire record of the location and remonumentation of certain corners, Township 12 North, Range 69 West, Sixth Principal Meridian, Colorado.

The remonumentation of certain corner points established by A. V. Richards and A.M. Fahringer, Cadastral Surveyors, in 1873-74, was made at the request of the Geographic Coordinate Data Base Program Manager, Washington Office, Bureau of Land Management.  
(BPA: NAB-000008 Task Order No.-NAD-000095)

The geographic coordinates, in NAD 83 (CORS 96), epoch date 2002.00, for the corners as shown, were determined by GPS observations to a Network Accuracy of less than 0.20 meters, 95 per cent confidence circle, as defined in Standards and Guidelines for Cadastral Surveys Using Global Positioning System Methods, May 9, 2001, Version I.O.

Location and remonumentation executed by Darryl A. Wilson, Colorado Registered Professional Land Surveyor #23059, under the direction of Paul Lukacovic, Cadastral Surveyor, beginning October 04, 2004, and completed October 10, 2004, pursuant to Special Instructions dated July 16, 1982, and Assignment Instructions dated July 14, 2004 for Group No. 750, Colorado.

CERTIFICATE

I, Darryl A. Wilson, Colorado Registered Professional Land Surveyor # 23059, HEREBY CERTIFY upon honor, that I have located and remonumented certain corners which are represented on this plat, and that said remonumentation has been made in strict conformity with said Special Instructions, and the Manual of Surveying Instructions, 1973.

*Darryl A. Wilson*  
Surveyor

8-31-05  
Date

UNITED STATES DEPARTMENT OF THE INTERIOR  
BUREAU OF LAND MANAGEMENT

Denver, Colorado September 1, 2005

The remonumentation represented by this plat, having been correctly executed in accordance with the requirements of the law and the regulations of this Bureau, is hereby accepted.

For the Director

*Randall M. Zuercher*  
Chief Cadastral Surveyor for Colorado





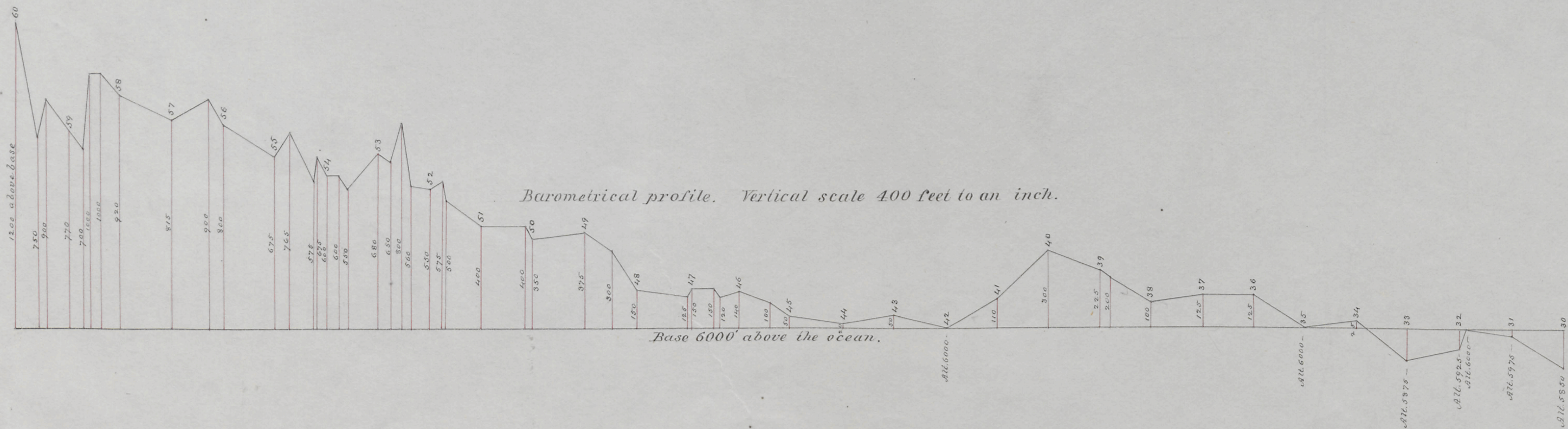
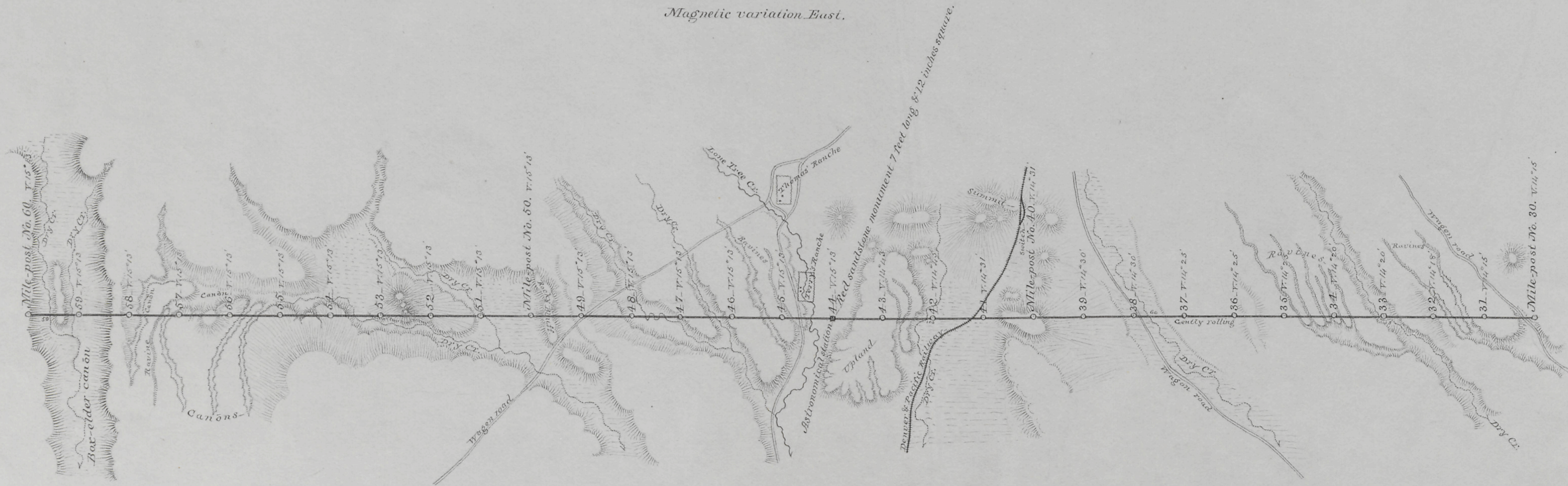


# SOUTH BOUNDARY OF WYOMING LATITUDE 41 NORTH

From mile-post No. 30, to mile-post No. 60.

Scale 2 miles to an inch.

Magnetic variation East.

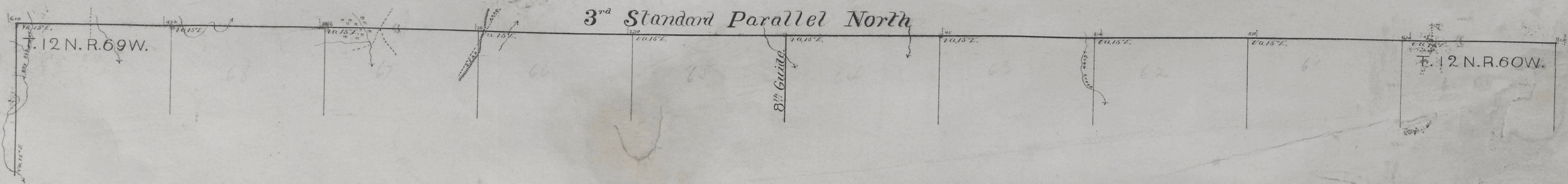


I hereby certify, that the above map is a correct representation of so much of the survey of the South Boundary of Wyoming, as extends from mile-post No. 30, to mile-post No. 60, as surveyed and marked by me, under contract from the Commissioner of the General Land Office, dated Sept. 13<sup>th</sup> 1872.

*A. V. Richards*

U. S. Surveyor.



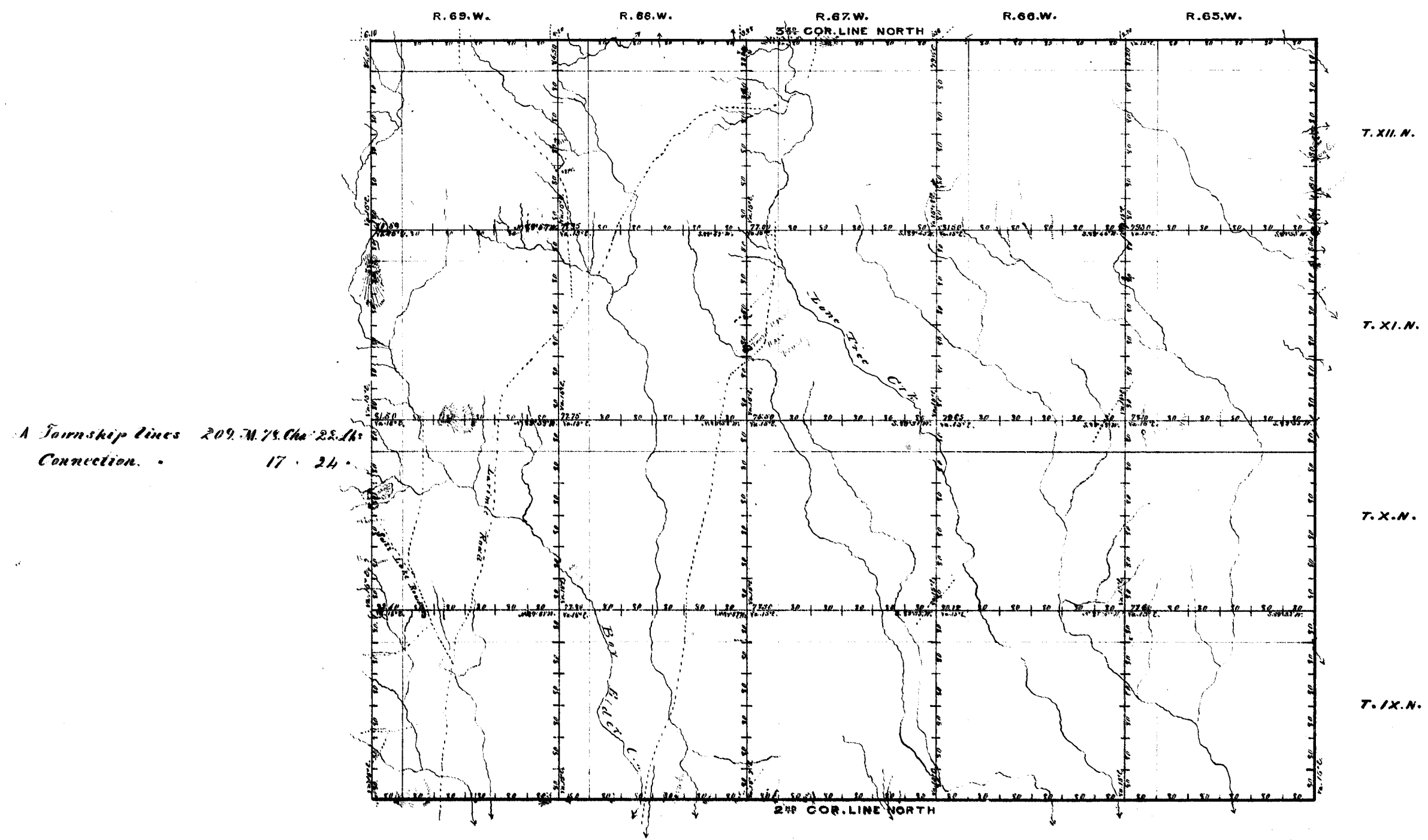


I do hereby certify that the above Diagram of the West boundary of Twp 12 N R 69 West, and of the 3<sup>rd</sup> Correction Line Ranges 65 66 67 68 and 69 West of the 6<sup>th</sup> Principal Meridian in Colorado, as surveyed by William Ashley under his contract, dated June 20<sup>th</sup> 1867 and of the 3<sup>rd</sup> Correction Line North, Ranges 60 61 62 63 and 64 West of the 6<sup>th</sup> Principal Meridian in Colorado, as surveyed by Cecil A. Deane under his contract, dated August 3<sup>th</sup> 1868, is in strict conformity with the approved field notes on file in this Office.

Surveyor Generals Office  
 Denver C. T. Deane 7<sup>th</sup> 1870

*Wm. L. Loring*  
 Sur<sup>g</sup> Gen<sup>l</sup>  
 of Colorado





I do hereby certify that the above Diagram of Townships 9, 10, 11, & 12 North, Ranges 65, 66, 67, 68, & 69 West of the sixth Principal Meridian, in Colorado, as surveyed by William Hooley under his contract dated June 20<sup>th</sup> 1867, is strictly conformable to the field notes of the survey, in and on file in this Office, which have been examined and approved.

Surveyor General's Office  
Denver Oct 25<sup>th</sup> 1867

W. D. Lessig,

Sur' Genl