

## T. 19 N., R. 121 W., Sixth Principal Meridian, Wyoming, Field Note Links

Plat Accession Number(s)	Year(s) of Survey	
		Township Subdivision Plats
651	1909	<a href="https://www.wy.blm.gov/cadastral/countyplats/lincoln/fieldnotes/t19nr121w_c338fn.pdf">https://www.wy.blm.gov/cadastral/countyplats/lincoln/fieldnotes/t19nr121w_c338fn.pdf</a>
650	1880	<a href="https://www.wy.blm.gov/cadastral/countyplats/lincoln/fieldnotes/t19nr121w_c107fn.pdf">https://www.wy.blm.gov/cadastral/countyplats/lincoln/fieldnotes/t19nr121w_c107fn.pdf</a>
		Township Exterior Plats
1978	1909	<a href="https://www.wy.blm.gov/cadastral/countyplats/uinta/fieldnotes/ext1440.pdf">https://www.wy.blm.gov/cadastral/countyplats/uinta/fieldnotes/ext1440.pdf</a>
1978	1909	<a href="https://www.wy.blm.gov/cadastral/countyplats/uinta/fieldnotes/retext1440.pdf">https://www.wy.blm.gov/cadastral/countyplats/uinta/fieldnotes/retext1440.pdf</a>
656	1880	<a href="https://www.wy.blm.gov/cadastral/countyplats/lincoln/fieldnotes/ext0656.pdf">https://www.wy.blm.gov/cadastral/countyplats/lincoln/fieldnotes/ext0656.pdf</a>
656	1880	<a href="https://www.wy.blm.gov/cadastral/countyplats/lincoln/fieldnotes/sbretmp41_52fn.pdf">https://www.wy.blm.gov/cadastral/countyplats/lincoln/fieldnotes/sbretmp41_52fn.pdf</a>
466	1880	<a href="https://www.wy.blm.gov/cadastral/countyplats/lincoln/fieldnotes/retext0466.pdf">https://www.wy.blm.gov/cadastral/countyplats/lincoln/fieldnotes/retext0466.pdf</a>
466	1875	<a href="https://www.wy.blm.gov/cadastral/countyplats/uinta/fieldnotes/ext0466.pdf">https://www.wy.blm.gov/cadastral/countyplats/uinta/fieldnotes/ext0466.pdf</a>
		State Boundary
5995	1874	<a href="https://www.wy.blm.gov/cadastral/countyplats/lincoln/fieldnotes/wb_mp30-57.pdf">https://www.wy.blm.gov/cadastral/countyplats/lincoln/fieldnotes/wb_mp30-57.pdf</a>

Resurvey Township N<sup>o</sup> 19 North, Range N<sup>o</sup> 121 West of the Sixth Principal Meridian, Wyoming

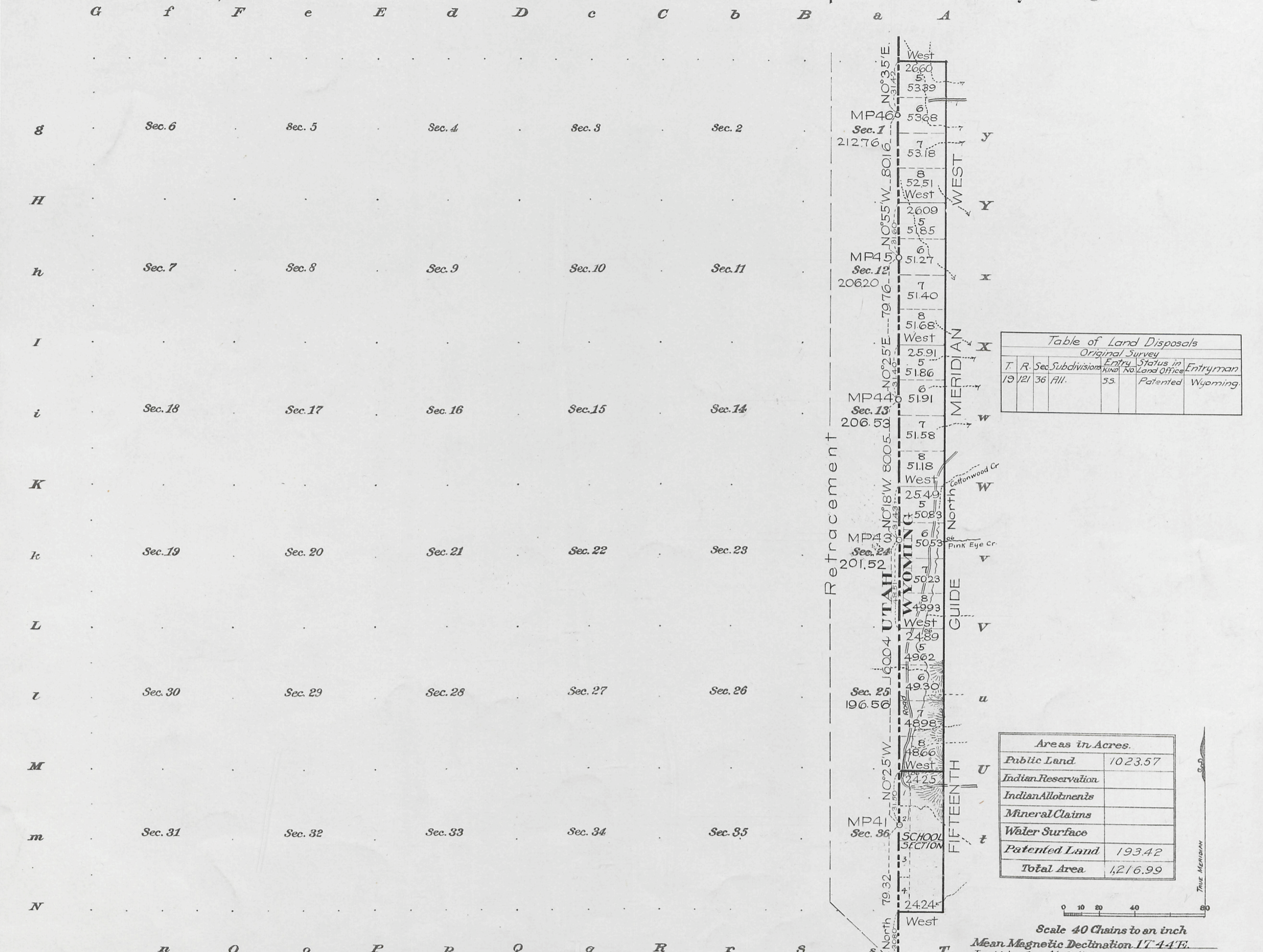


Table of Land Disposals

Original Survey		Entry Status in	
T. R.	Sec. Subdivisions	Kind	No. Land Office
19	121	36	All.
		55	Patented
			Wyoming

Areas in Acres.

Public Land	1023.57
Indian Reservation	
Indian Allotments	
Mineral Claims	
Water Surface	
Patented Land	193.42
<b>Total Area</b>	<b>1216.99</b>

Surveys Designated.	By Whom Surveyed.	Contract		Amount of Surveys			When Surveyed.	
		No.	Date	Mls.	chs.	fts.	Begun.	Completed.
RESURVEY NEWS Township Lines	Newell J. Burnham	338	June 8, 1909	6	50	84	Sept 6, 1909	Oct 5, 1909
RESURVEY Subdivision Lines	"	"	"	1	46	63	Sept 30, 1909	Oct 3, 1909
Connecting Lines	"	"	"	2	14	44	"	"
RESURVEY Township Line	"	"	"	5	79	95	Aug 29, 1909	Oct 1, 1909
RESURVEY W. Township Line	A.V. Richards	GLO	May 29, 1873	6	00	00	June 10, 1874	June 11, 1874

The above map of Township No. 19 North Range No. 121 West of the Sixth Principal Meridian, Wyoming is strictly conformable to the field notes of the survey thereof on file in this office, which have been examined and approved.

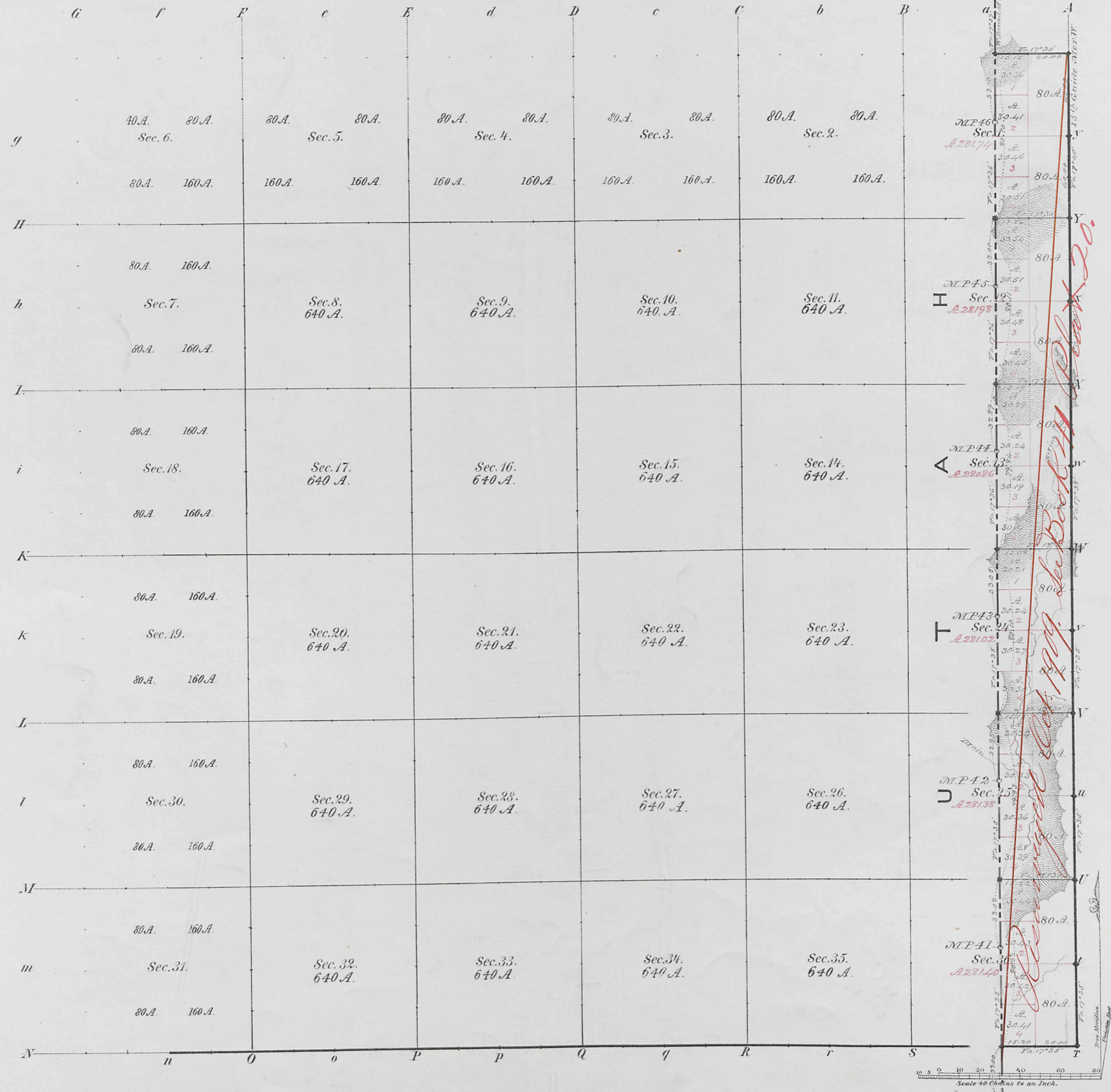
U. S. Surveyor General's Office,  
Cheyenne, Wyoming, October 2, 1911

*Stephen P. Hanson*  
Surveyor General.

Accepted by the Hon. Commissioner in letter "C" May 11, 1912.  
Duplicate plat mailed Cheyenne Land Office, May 17, 1912.

650

TOWNSHIP N<sup>o</sup> 19 NORTH RANGE N<sup>o</sup> 121 WEST of the 6<sup>th</sup> Principal MERIDIAN.



Total number of Acres 1,688.38

Surveys Designated	By Whom Surveyed	Date of Contract	Amount of Surveys M <sup>2</sup> Ch <sup>2</sup> Lk <sup>2</sup>	When Surveyed	Magnet Decl <sup>n</sup>
E. & S. Township lines	Medary & Grant	July 7, 1875	6 35 20	July, 1875	17° 35' East
Subdivisions	James E. Woods	Aug. 11, 1880	2 15 90	Sept. 1880	17° 30' East
Connections			2 4 91		
N. Township line			35 15	Aug.	
W. Bound. of Wyo	A. V. Richards	May 29, 1873	6 00 00	June, 1874	

The above Map of Township N<sup>o</sup> 19 North, of Range N<sup>o</sup> 121 West of the 6<sup>th</sup> Principal Meridian, Wyoming Territory, is strictly conformable to the field notes of the survey thereof on file in this Office, which have been examined and approved

Surveyor General's Office, *Edw. C. David* Sur. Gen.  
Cheyenne, Wyo. Nov. 6<sup>th</sup> 1880

A. Gast & Co., St. Louis, Mo.

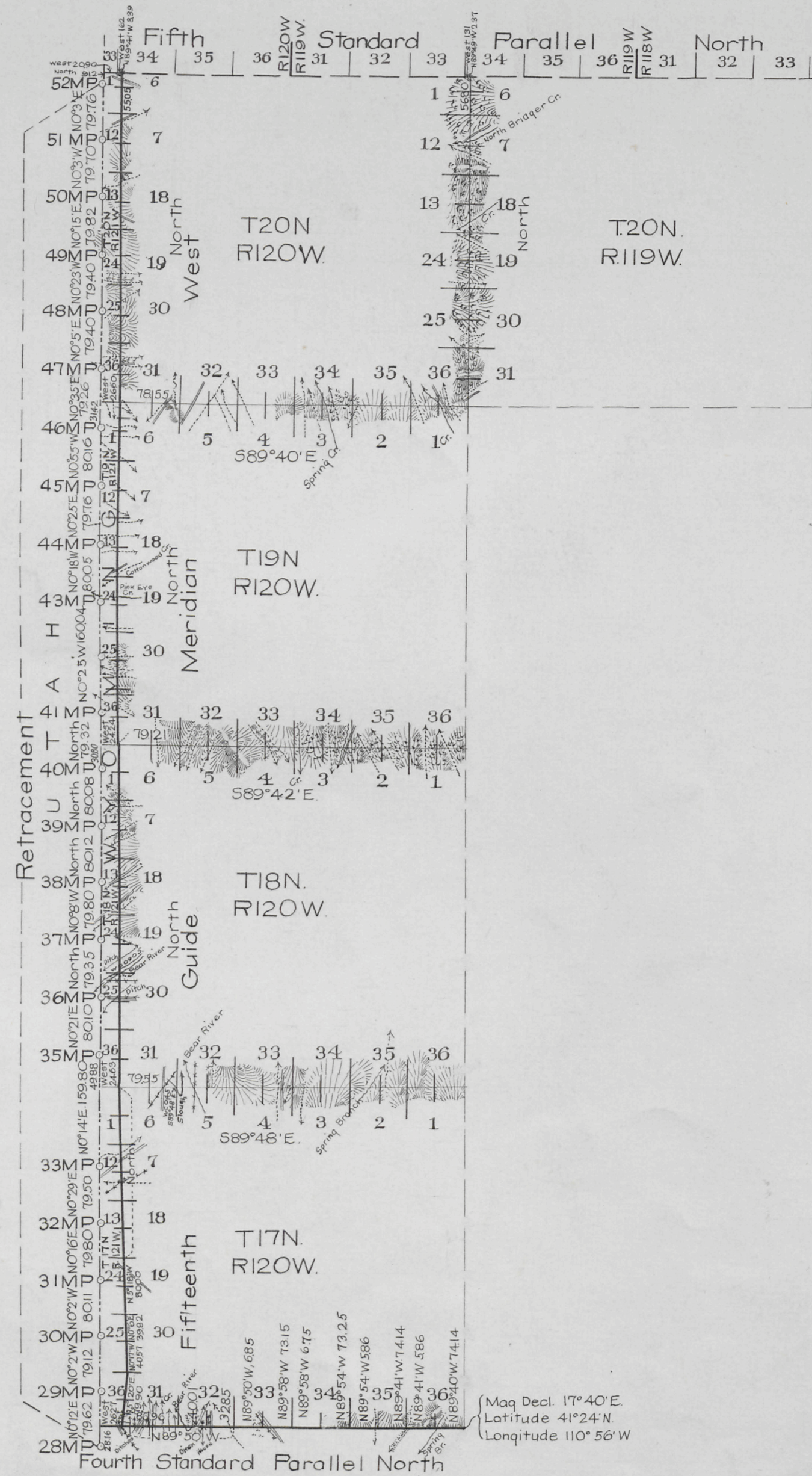
Case  
19-121

41  
Indexed

1978

# RESURVEY TOWNSHIP EXTERIORS

Scale: 160 Chains to 1 inch



This Plat  
of the Resurvey  
of the  
Fourth Standard Parallel North through Ranges 120, and 121W,  
Fifteenth Guide Meridian West through Townships 17, 18, 19  
and 20 N, North Boundaries of Townships 17, 18 and 19 North,  
Ranges 120 and 121 W, and West Boundary of T20N  
R.119W. of the Sixth Principal Meridian, Wyoming, and  
of the Retracement  
of the  
West Boundary of Wyoming from Mile Post 28 to Mile  
Post 52 is strictly conformable to the field notes of  
the resurvey thereof

by  
Newell J. Burnham, U.S.D.S.  
under his  
Contract No 338,  
dated June 8, 1909,  
which have been examined, approved and filed in this  
office.  
U.S. Surveyor General's Office,  
Cheyenne, Wyoming,  
October 2, 1911.

*Stephen P. Hancock*  
Surveyor General

Surveys Designated	Amount			When Surveyed
	Mls	Chs	Lks.	
Standard Lines Retraced	6	26	09	July 10-July 12, 1909
Standard Lines Resurveyed	30	01	43	July 13-Sept 15, 1909
Connecting Lines	1	68	95	July 13-Oct 5, 1909
State Line Retraced	23	74	07	Aug 4-Oct 4, 1909
Township Lines	24	49	58	July 15-Oct 5, 1909

(Mag Decl. 17°40' E.  
Latitude 41°24' N.  
Longitude 110°56' W)

J. Copy.

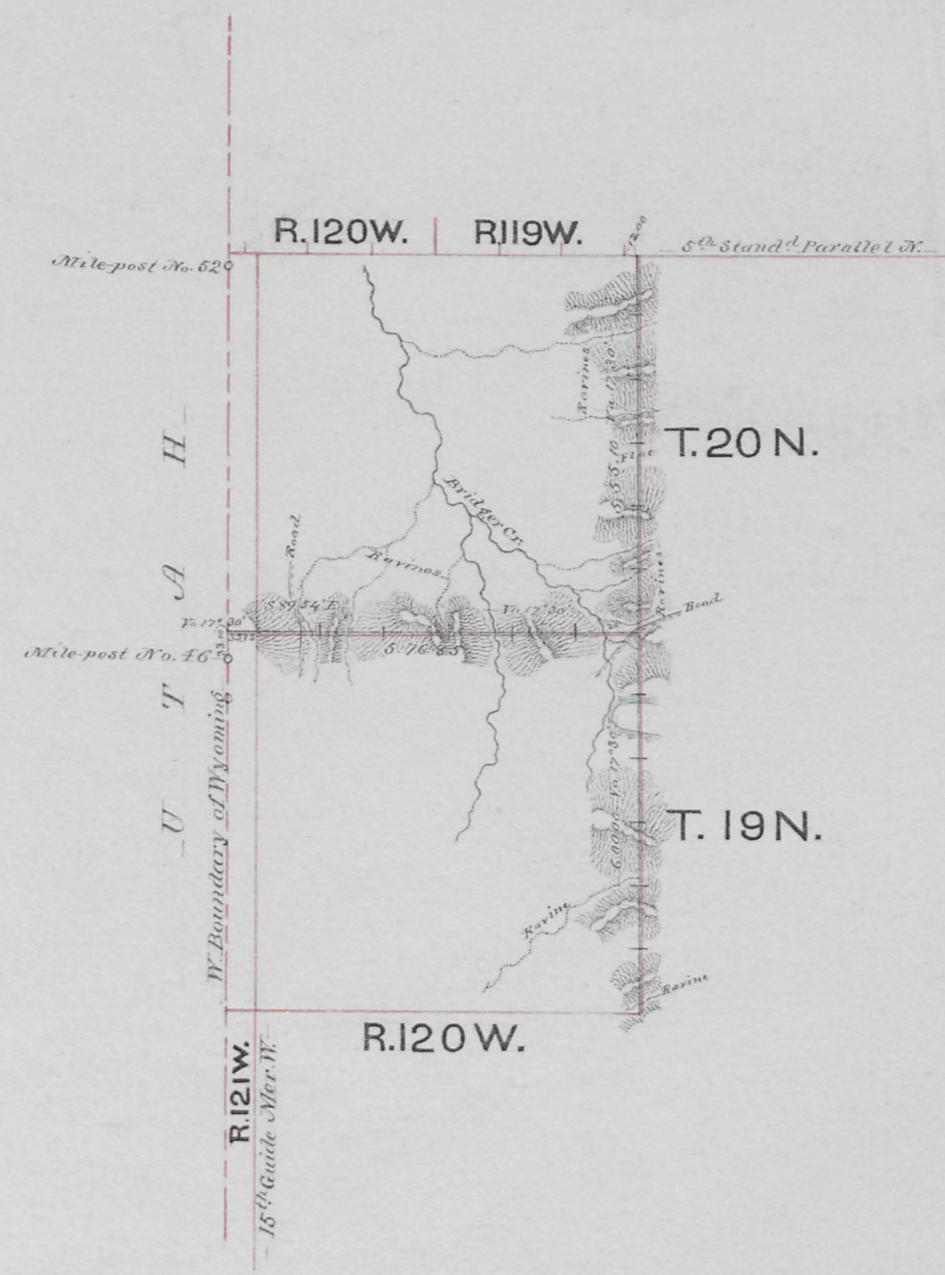
Accepted by the Hon. Commissioner in his letter "E"  
May 11, 1912

Index

656

# EXTERIOR LINES.

Scale 3 miles to an inch. Variation East.



Surveys designated.	By whom surveyed.	Date of contract.	Amount of surveys	When surveyed
Township Lines,	James K. Woods	Aug. 11, 1880	18 7 10	Aug. & Sept. 1880.
Connections,			15 10	

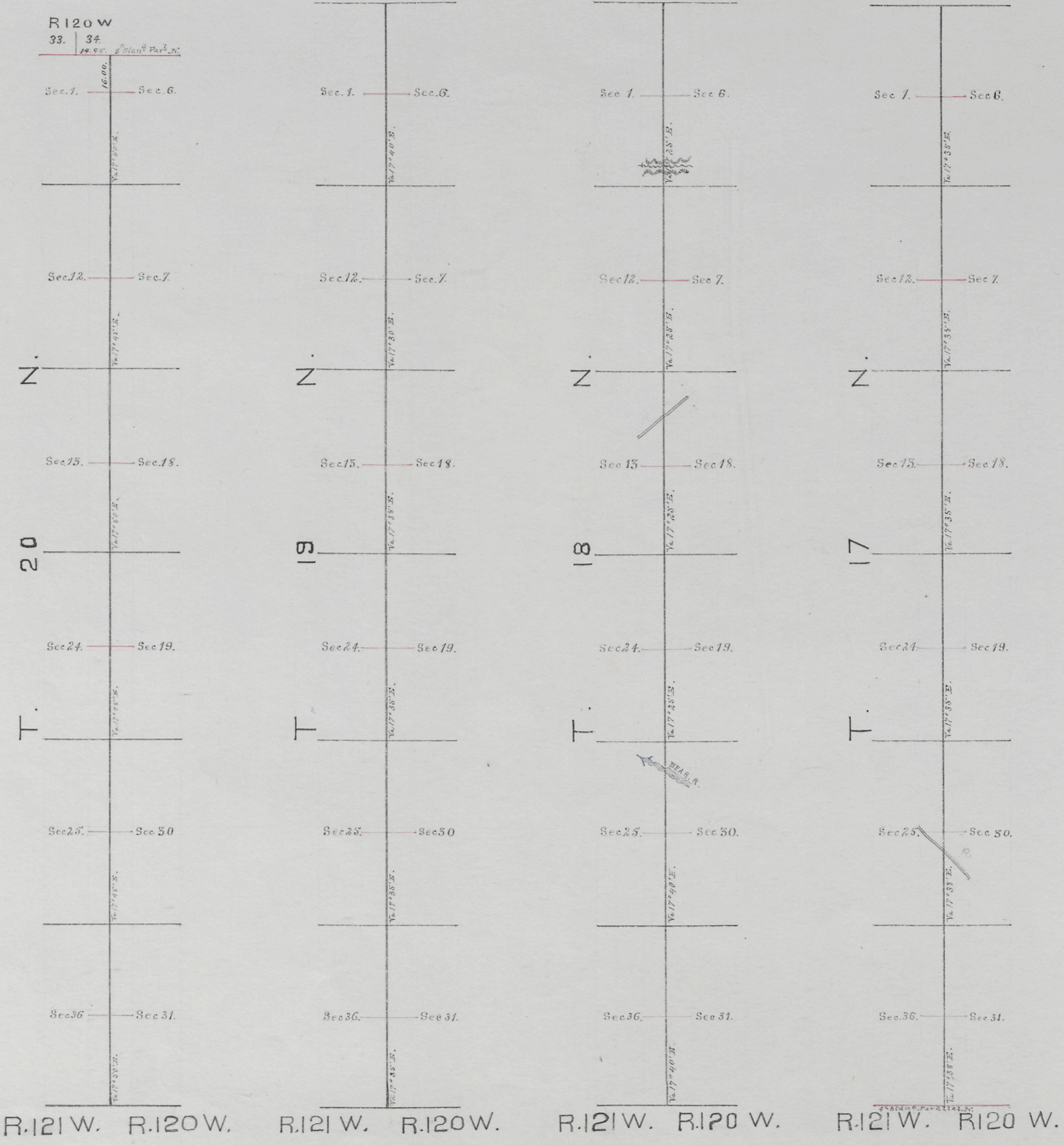
I hereby certify that the above diagram of the exterior lines of Townships 19 and 20 N. Ranges 120 and 121 West of the 6<sup>th</sup> Principal Meridian, in Wyoming Territory, is strictly conformable to the field notes of the survey thereof, on file in this office, which have been examined and approved.

Surveyor General's Office,  
Cheyenne, Wyo. Nov 6<sup>th</sup>, 1880

*Edw. C. David*  
Surveyor General.

(8)  
Index

# 15<sup>TH</sup> GUIDE MERIDIAN WEST



Survey Designated	By Whom Surveyed	Date of Contract	Amount of Survey	When Surveyed
15 Guide Merid <sup>n</sup> W.	McDary & Grant	July 7 <sup>th</sup> 1875	23 - 56 - 00	July 16-20 <sup>th</sup> 1875
Connections	" " "	" " "	14 - 95	" " "

I hereby certify that the above Diagram of the 15<sup>th</sup> Guide Meridian West of the 6<sup>th</sup> Principal Meridian between the 4<sup>th</sup> and 5<sup>th</sup> Standard Parallels North in Wyoming Territory, is strictly conformable to the field notes of the Survey thereof on file in this office which have been examined and approved.  
 Surveyor General's office,  
 Cheyenne Wyo. Jan'y 6<sup>th</sup> 1876.

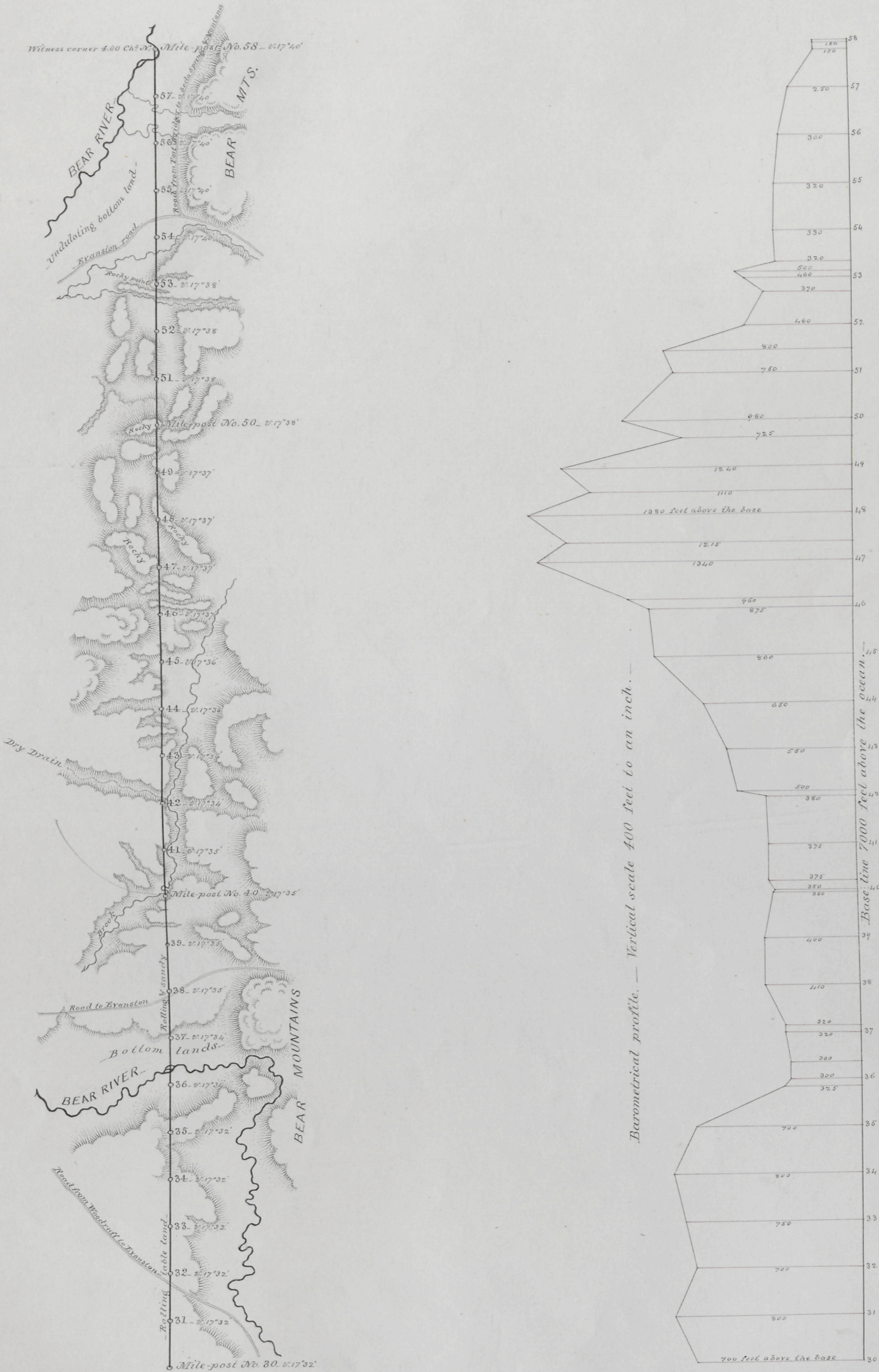
*Edw. C. David*  
 Sur<sup>g</sup> Gen<sup>l</sup>

# WEST BOUNDARY OF WYOMING

LONGITUDE 34 WEST

From mile-post No. 30 to mile-post No. 58

Scale 2 miles to an inch. Magnetic Variation East



I Hereby Certify, that the above map is a correct representation of so much of the survey of the West Boundary of Wyoming, as extends from mile-post No. 30 to mile-post No. 58, as surveyed and marked by me, under Contract from the Commissioner of the General Land Office, dated May 29<sup>th</sup> 1843.

*A. V. Richardt.*  
U. S. Astronomer and Surveyor.