

T. 20 N., R. 121 W., Sixth Principal Meridian, Wyoming, Field Note Links

Plat Accession Number(s)	Year(s) of Survey	
		Township Subdivision Plats
653	1909	https://www.wy.blm.gov/cadastral/countyplats/lincoln/fieldnotes/t20nr121w_c338fn.pdf
652	1880	https://www.wy.blm.gov/cadastral/countyplats/lincoln/fieldnotes/t20nr121w_c107fn.pdf
		Township Exterior Plats
1978	1909	https://www.wy.blm.gov/cadastral/countyplats/uinta/fieldnotes/ext1440.pdf
1978	1909	https://www.wy.blm.gov/cadastral/countyplats/uinta/fieldnotes/retext1440.pdf
656	1880	https://www.wy.blm.gov/cadastral/countyplats/lincoln/fieldnotes/ext0656.pdf
656	1880	https://www.wy.blm.gov/cadastral/countyplats/lincoln/fieldnotes/sbretmp41_52fn.pdf
466	1880	https://www.wy.blm.gov/cadastral/countyplats/lincoln/fieldnotes/retext0466.pdf
466	1875	https://www.wy.blm.gov/cadastral/countyplats/uinta/fieldnotes/ext0466.pdf
		State Boundary
5995	1874	https://www.wy.blm.gov/cadastral/countyplats/lincoln/fieldnotes/wb_mp30-57.pdf

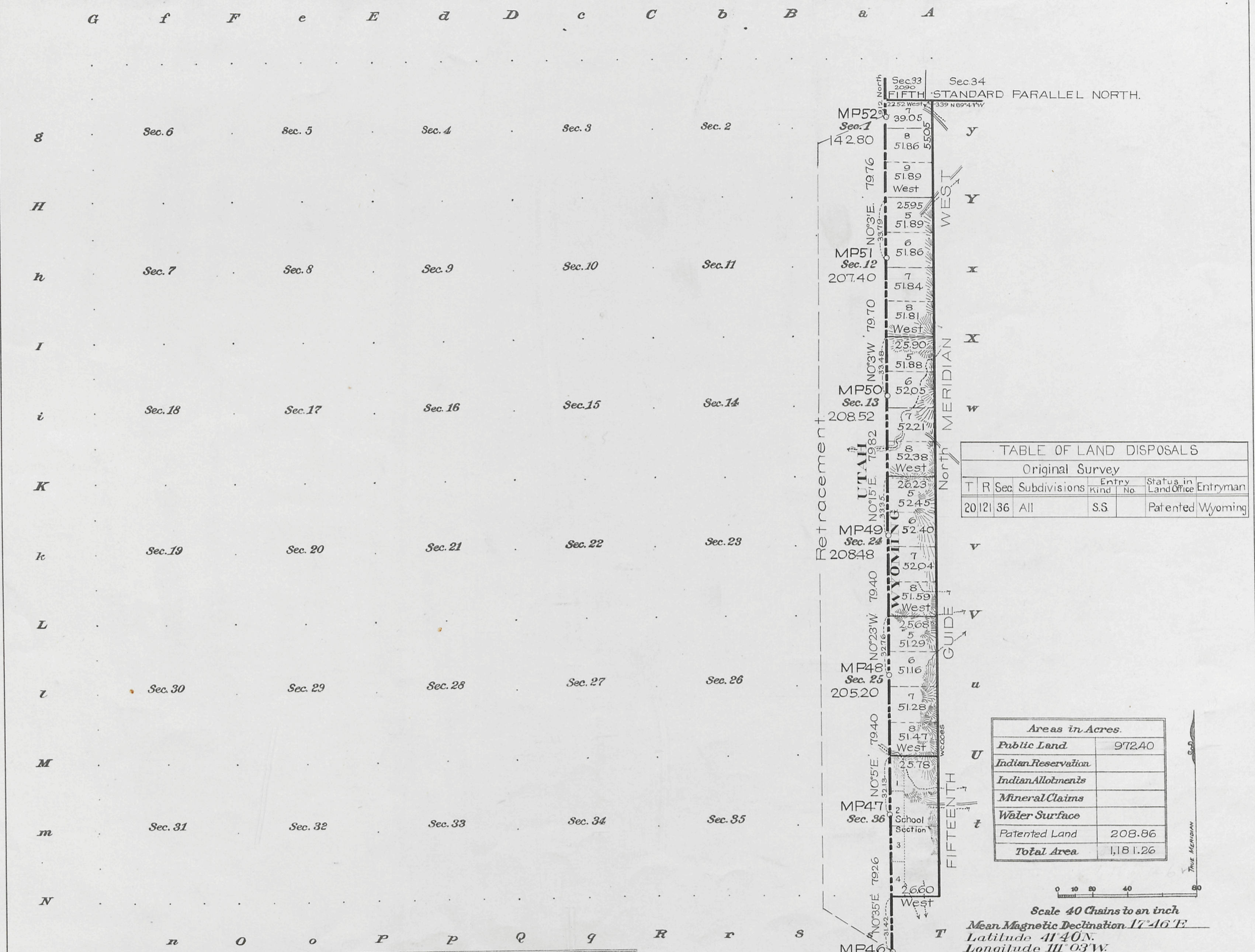
41

21

653

(4-675a)

Resurvey Township N^o 20 North, Range N^o 121 West of the Sixth Principal Meridian, Wyoming



Surveys Designated.	By Whom Surveyed.	Contract No.	Contract Date	Amount of Surveys			When Surveyed.	
				Mts.	chs.	Lks.	Begun.	Completed.
RESURVEY E and S Township Lines	Newell J. Burnham	338	June 8, 1909	6	1	65	Sept. 14, 1909	Oct. 5, 1909
RESURVEY Subdivision Lines	"	"	"	1	49	54	Oct. 3, 1909	Oct. 5, 1909
RESURVEY Connecting Lines	"	"	"	2	05	51	"	"
RETRACEMENT W Township Line	"	"	"	5	45	92	Oct. 4, 1909	Oct. 4, 1909
RESURVEY W Township Line	Johnson & Jaeckel	309	March 27, 1906		25	91	July 3, 1907	July 3, 1907
RESURVEY W Township Line	A.V. Richards	GLC	May 29, 1873	5	57	70	June 12, 1874	June 12, 1874

The above map of Township No. 20 North, Range No. 121 West of the Sixth Principal Meridian, Wyoming is strictly conformable to the field notes of the survey thereof on file in this office, which have been examined and approved.

U.S. Surveyor General's Office,
Cheyenne, Wyoming, October 2, 1911

Stephen P. Johnson
Surveyor General.

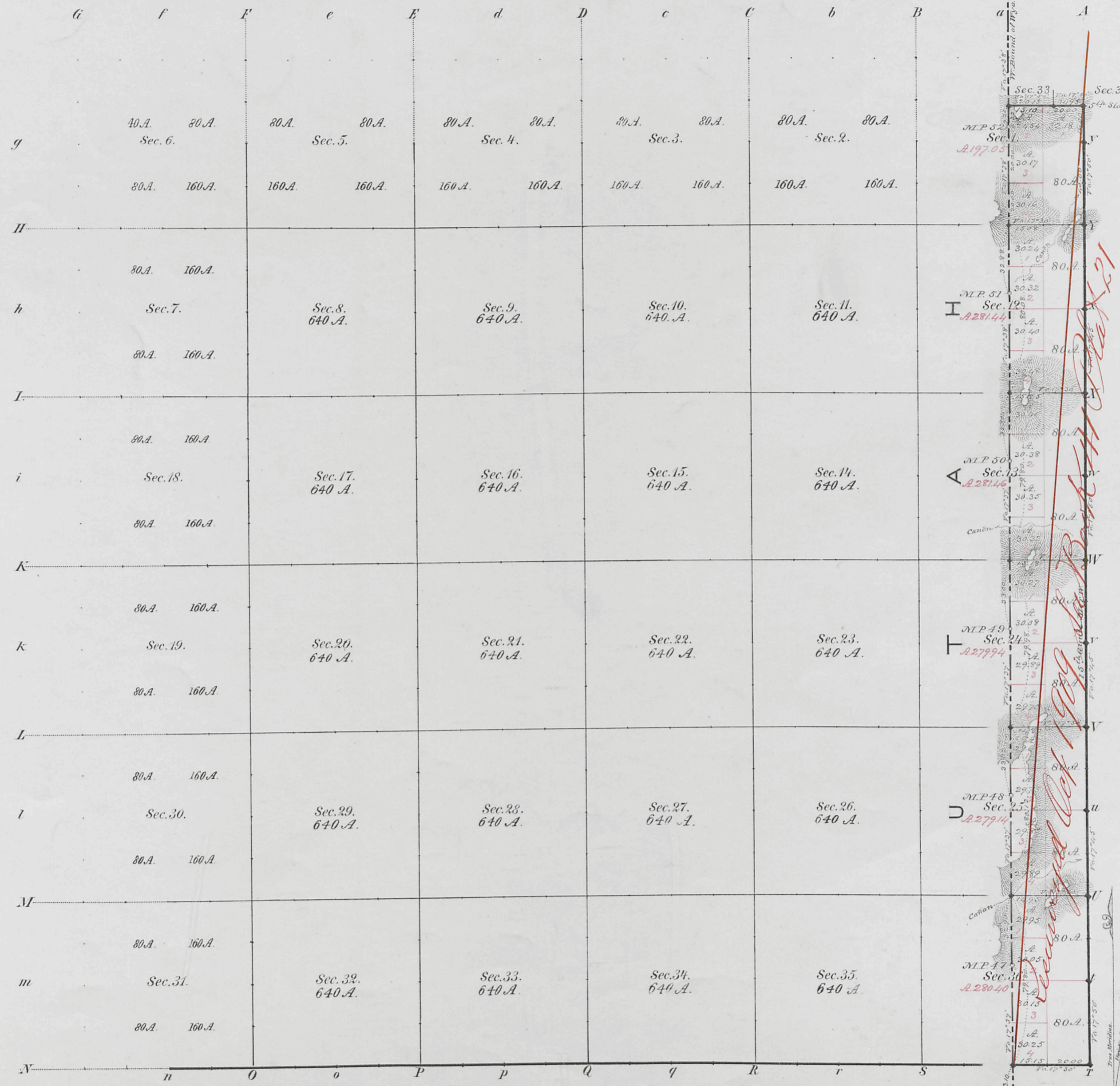
Accepted by the Hon. Commissioner in letter "E" May 11, 1912.
Duplicate plat mailed Eastern Land Office, May 17, 1912.

20-121

543 A

652

TOWNSHIP N^o 20 NORTH, RANGE N^o 121 WEST of the 6th Principal MERIDIAN.



Total number of Acres. 1599.43

Surveys Designated	By Whom Surveyed	Date of Contract	Amount of Surveys M ² Sq. Lks.	When Surveyed	Magnet. Decl.
E. Township line.	McClary & Grant	July 7, 1875	5 . 56 . 00	July, 1875	17° 20' East
Subdivisions	James F. Woods	Aug. 11, 1880	2 . 15 . 26	Sept., 1880	17° 30' East
Connections			2 . 7 . 60		
S. Township line.			35 . 15	Aug.	
W. Bound. of Wyo.	A. F. Richards	May 29, 1873	5 . 56 . 00	June, 1874	
5 th Stand. Par. N.	W ^o O. Dimey	June 21, "	35 . 10	Sept. 1873	

The above Map of Township N^o 20 North of Range N^o 121 West of the 6th Principal Meridian, Wyoming Territory, is strictly conformable to the field notes of the survey thereof on file in this Office, which have been examined and approved

Surveyor General's Office, } *Edw. C. David*
 Cheyenne, Wyo. Nov. 6th 1880 } *Dist. Genl.*

543

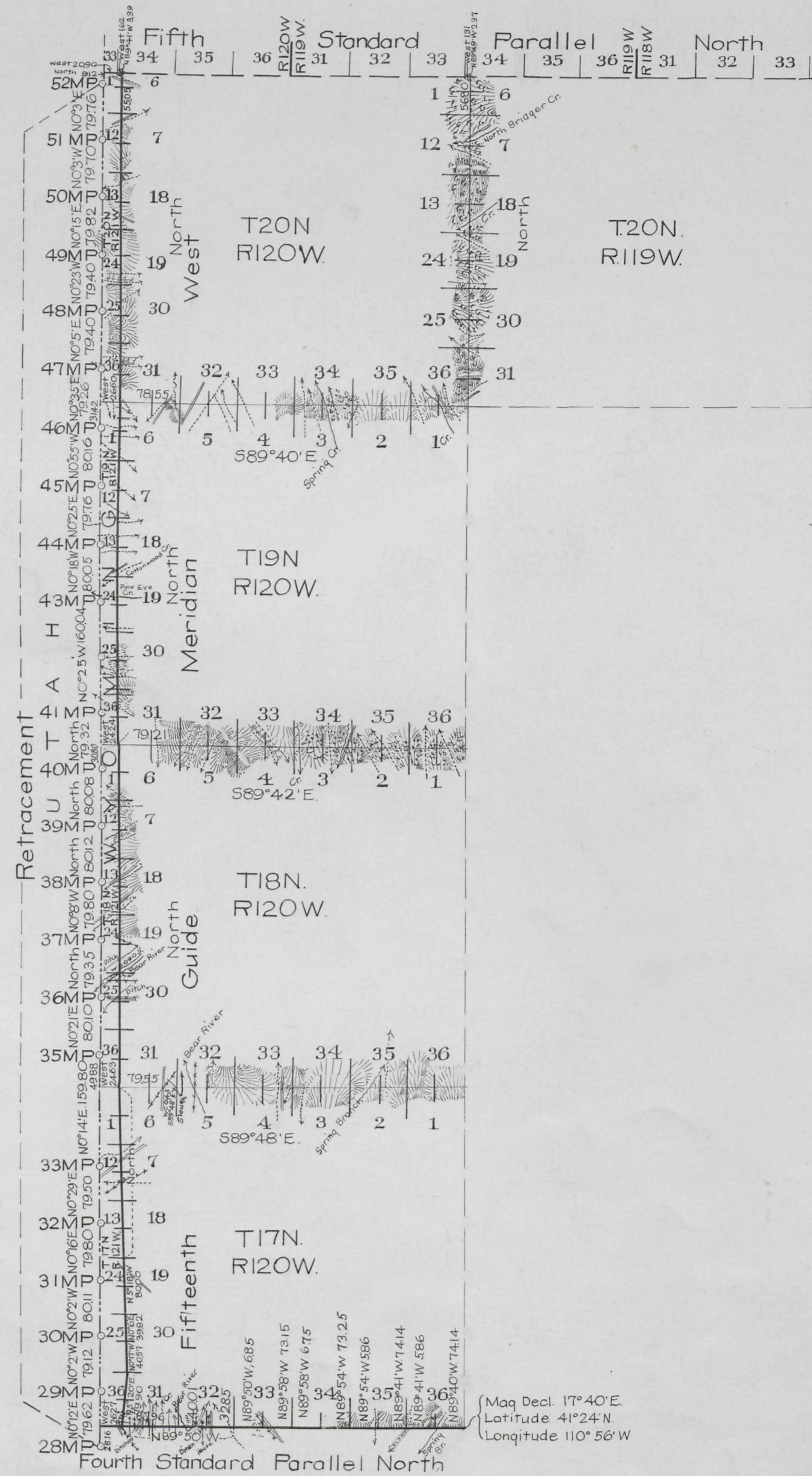
Case
20-121.

41
Indexed

1978

RESURVEY TOWNSHIP EXTERIORS

Scale: 160 Chains to 1 inch



This Plat
of the Resurvey
of the
Fourth Standard Parallel North through Ranges 120, and 121W,
Fifteenth Guide Meridian West through Townships 17, 18, 19
and 20 N, North Boundaries of Townships 17, 18 and 19 North,
Ranges 120 and 121 W, and West Boundary of T20N
R.119W. of the Sixth Principal Meridian, Wyoming, and
of the Retracement
of the
West Boundary of Wyoming from Mile Post 28 to Mile
Post 52 is strictly conformable to the field notes of
the resurvey thereof

by
Newell J. Burnham, U.S.D.S.
under his
Contract No 338,
dated June 8, 1909,
which have been examined, approved and filed in this
office.
U.S. Surveyor General's Office,
Cheyenne, Wyoming,
October 2, 1911.

Stephen P. Hancock
Surveyor General

Surveys Designated	Amount			When Surveyed
	Mls	Chs	Lks.	
Standard Lines Retraced	6	26	09	July 10-July 12, 1909
Standard Lines Resurveyed	30	01	43	July 13-Sept 15, 1909
Connecting Lines	1	68	95	July 13-Oct 5, 1909
State Line Retraced	23	74	07	Aug 4-Oct 4, 1909
Township Lines	24	49	58	July 15-Oct 5, 1909

(Mag Decl. 17°40'E.
Latitude 41°24'N
Longitude 110°56'W

J. Copy.

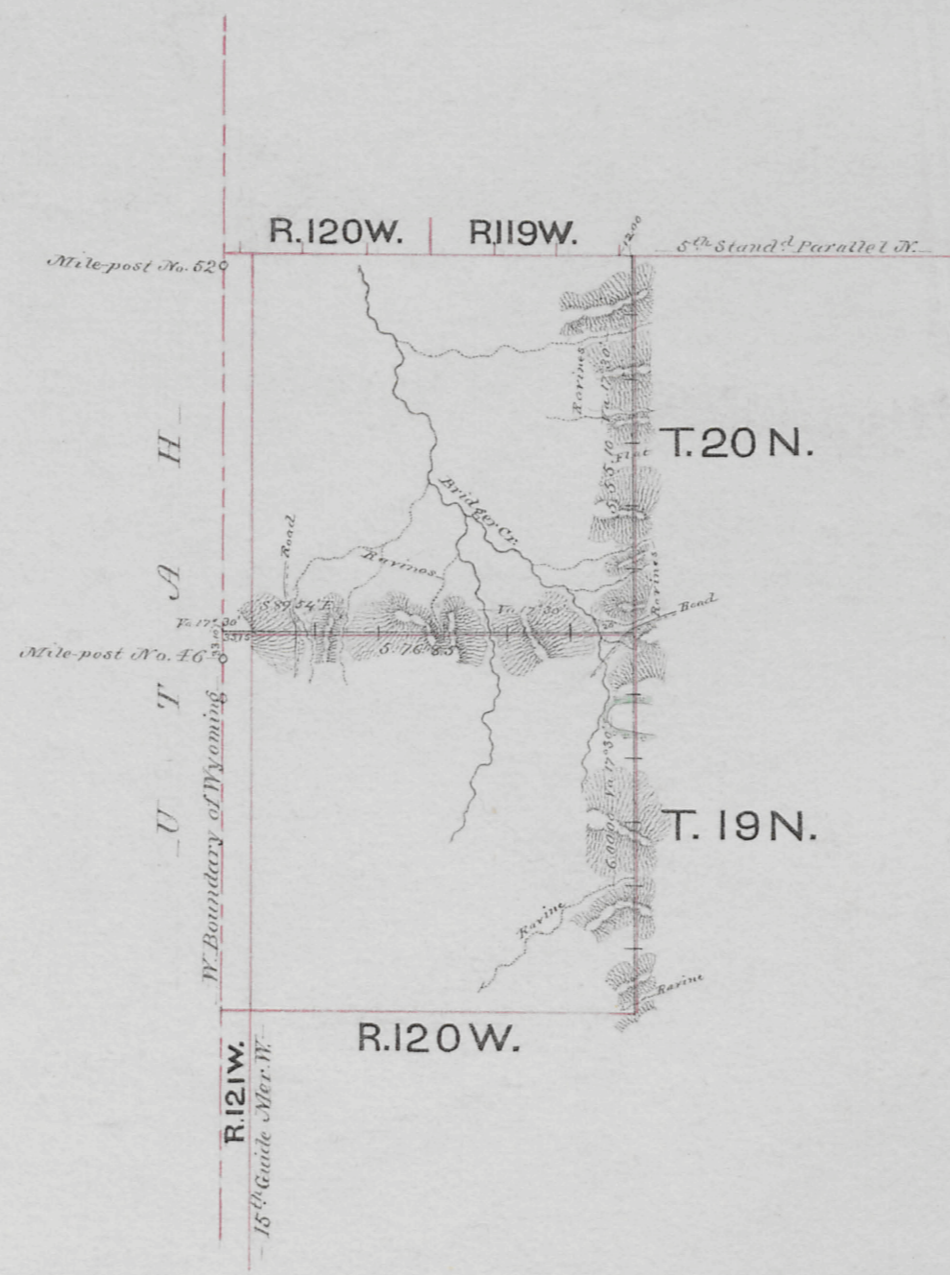
Accepted by the Hon. Commissioner in his letter "E"
May 11, 1912

Index

656

EXTERIOR LINES.

Scale 3 miles to an inch. Variation East.



Surveys designated.	By whom surveyed.	Date of contract.	Amount of surveys	When surveyed
Township Lines,	James K. Woods	Aug. 11, 1880	18 ^{sq} 7 ^{sq} 10 ^{secs}	Aug. & Sept. 1880.
Connections,			15 . 10	

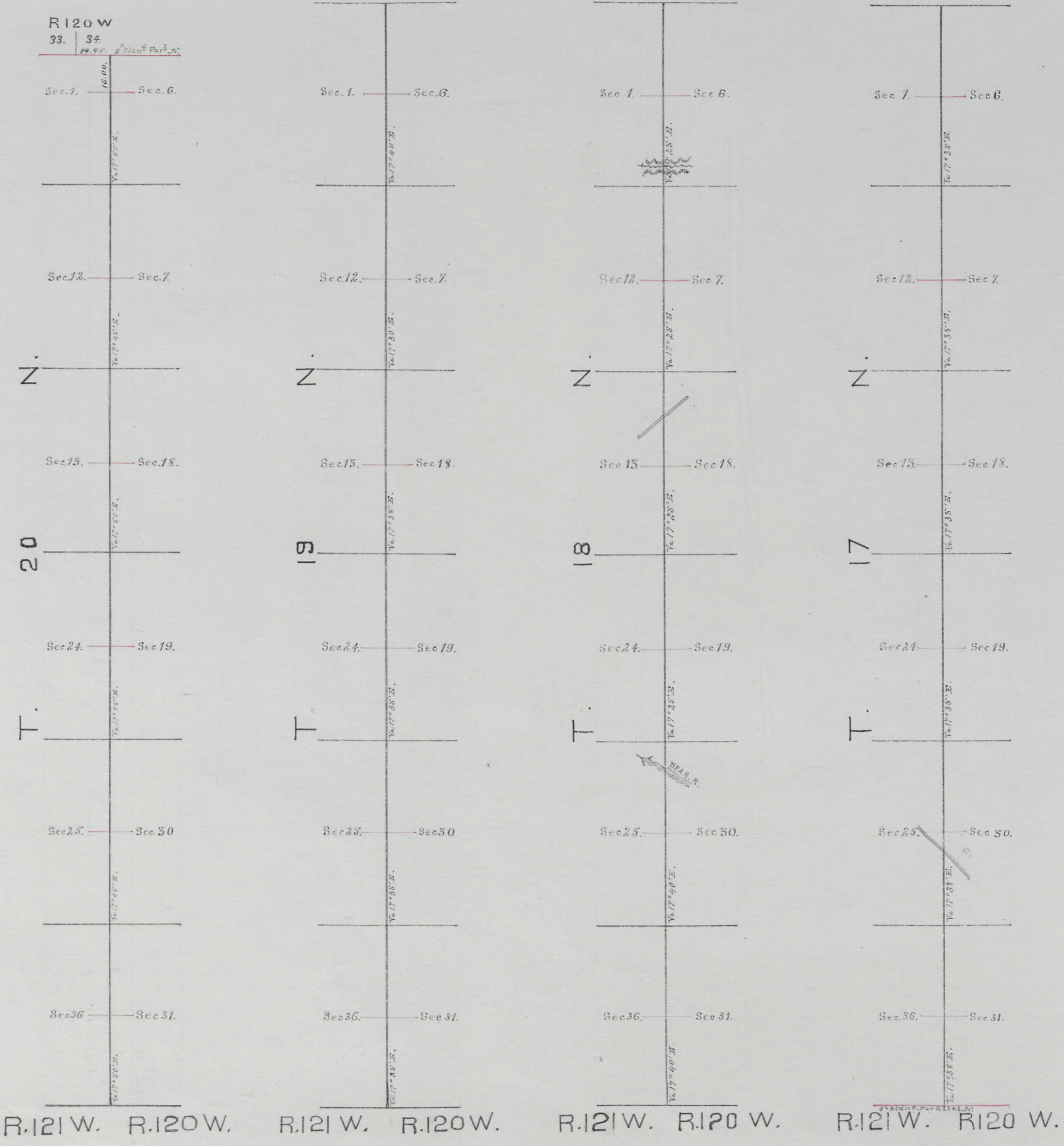
I hereby certify that the above diagram of the exterior lines of Townships 19 and 20 N. Ranges 120 and 121 West of the 6th Principal Meridian, in Wyoming Territory, is strictly conformable to the field notes of the survey thereof, on file in this office, which have been examined and approved.

Surveyor General's Office,
Cheyenne, Wyo. Nov 6th, 1880

Edw. C. David
Surveyor General.

(8)
index

15TH GUIDE MERIDIAN WEST



Survey Designated	By Whom Surveyed	Date of Contract	Amount of Survey	When Surveyed
15 Guide Merid ⁿ W.	McDary & Grant	July 7 th 1875	23 - 56 - 00	July 16 - 20 th 1875
Connections	" " "	" " "	14 - 95	" " "

I hereby certify that the above Diagram of the 15th Guide Meridian West of the 6th Principal Meridian between the 4th and 5th Standard Parallels North in Wyoming Territory, is strictly conformable to the field notes of the Survey thereof on file in this office which have been examined and approved.
 Surveyor General's office,
 Cheyenne Wyo. Jan'y 6th 1876.

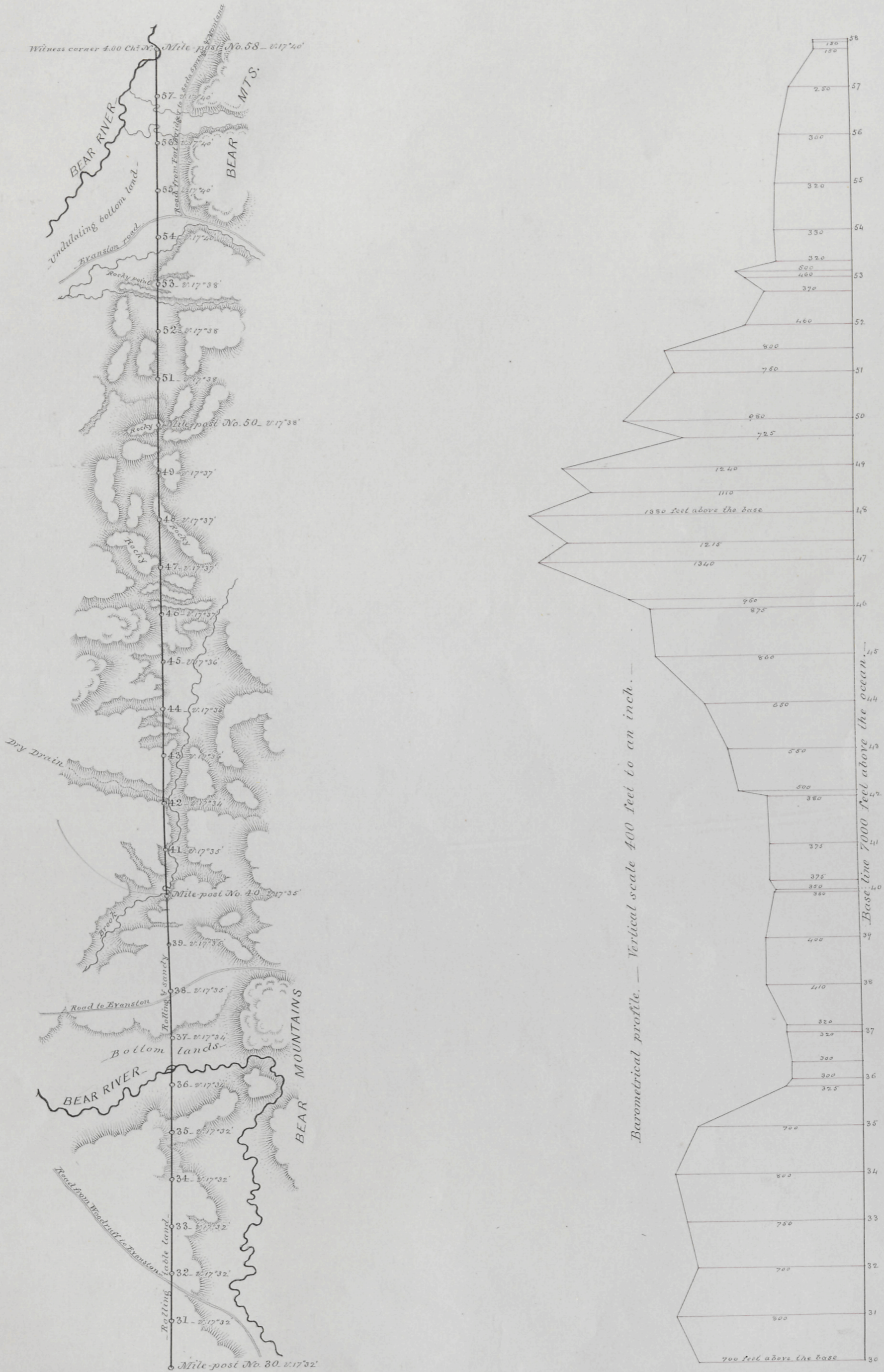
Edw. C. David
 Sur^g Gen^l

WEST BOUNDARY OF WYOMING

LONGITUDE 34 WEST

From mile-post No. 30 to mile-post No. 58

Scale 2 miles to an inch. Magnetic Variation East



I Hereby Certify, that the above map is a correct representation of so much of the survey of the West Boundary of Wyoming, as extends from mile-post No. 30 to mile-post No. 58, as surveyed and marked by me, under Contract from the Commissioner of the General Land Office, dated May 29th 1843.

A. V. Richardt.
U. S. Astronomer and Surveyor.