

## T. 25 1/2 N., R. 114 W., Sixth Principal Meridian, Wyoming, Field Note Links

Plat Accession Number(s)	Year(s) of Survey	Township Subdivision Plats
4945	1917	<a href="https://www.wy.blm.gov/cadastral/countyplats/lincoln/fieldnotes/t25.5nr114w_gp046fn.pdf">https://www.wy.blm.gov/cadastral/countyplats/lincoln/fieldnotes/t25.5nr114w_gp046fn.pdf</a>
4945	1917	<a href="https://www.wy.blm.gov/cadastral/countyplats/lincoln/fieldnotes/t25.5nr114w_gp046fn_bnd.pdf">https://www.wy.blm.gov/cadastral/countyplats/lincoln/fieldnotes/t25.5nr114w_gp046fn_bnd.pdf</a>

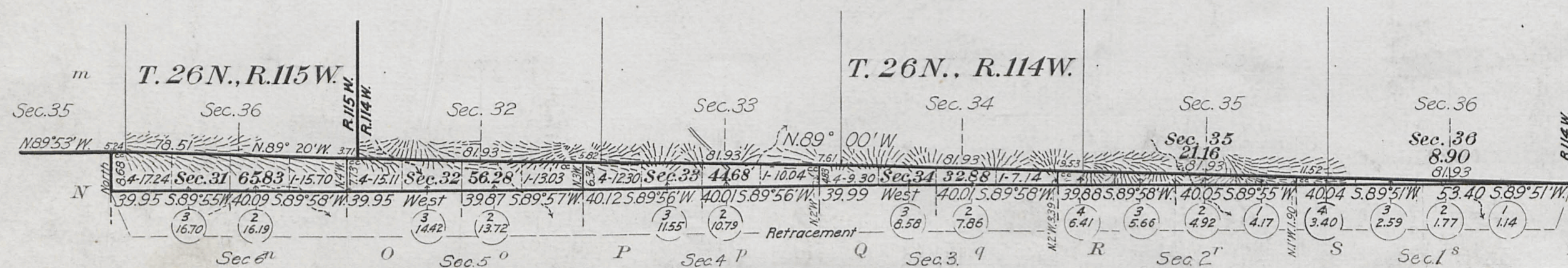
Survey Accepted March 16, 1900 G.L.O.

Township N° 25½ North, Range N° 114 West of the Sixth Principal Meridian, Wyoming

G f F e E d D c C b B a A

g  
H  
h  
I  
i  
K  
k  
L  
l  
M

y  
Y  
x  
X  
w  
W  
v  
V  
u  
U  
t



Areas in Acres	
Public Land	229.73
Indian Reservation	
Indian Allotments	
Mineral Claims	
Water Surface	
Total Area	229.73

Surveys Designated	By Whom Surveyed	Group	Amount of Surveys			When Surveyed			
			No.	Date	Mts.	chs.	lks.	Began	Completed
Subdivision Lines	Hans D. Voigt	4.6	March 3, 1917	2.4	19		October 8, 1917	October 8, 1917	
Connecting Lines	"	"	"	"	4.3	4.3	October 8, 1917	October 9, 1917	
West Township Line	"	"	"	"	8	68	October 9, 1917	October 9, 1917	
RE-SURVEY	"	"	"	"	6	13	40	October 4, 1917	October 8, 1917
North Township Line	"	"	"	"	6	13	36	September 29, 1917	October 1, 1917
RETRACEMENT	"	"	"	"	6	13	22	May 26, 1903	May 26, 1903
South Township Line	Stahle and Van Orsdel	2.90	June 20, 1902	6	13	22	May 26, 1903	May 26, 1903	

The above map of Township No. 25½ North, Range No. 114 West of the Sixth Principal Meridian, Wyoming is strictly conformable to the field notes of the survey thereof on file in this office, which have been examined and approved.

U. S. Surveyor General's Office.  
Coyote Wyoming May 7, 1918  
Charles L. Decker  
Surveyor General.