

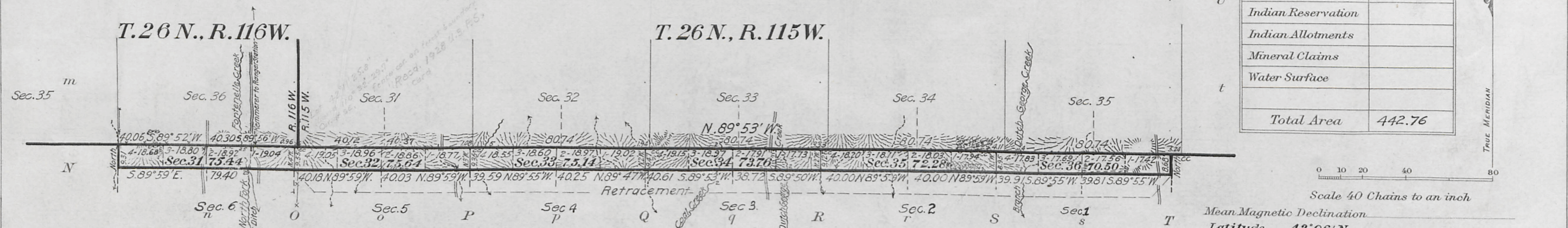
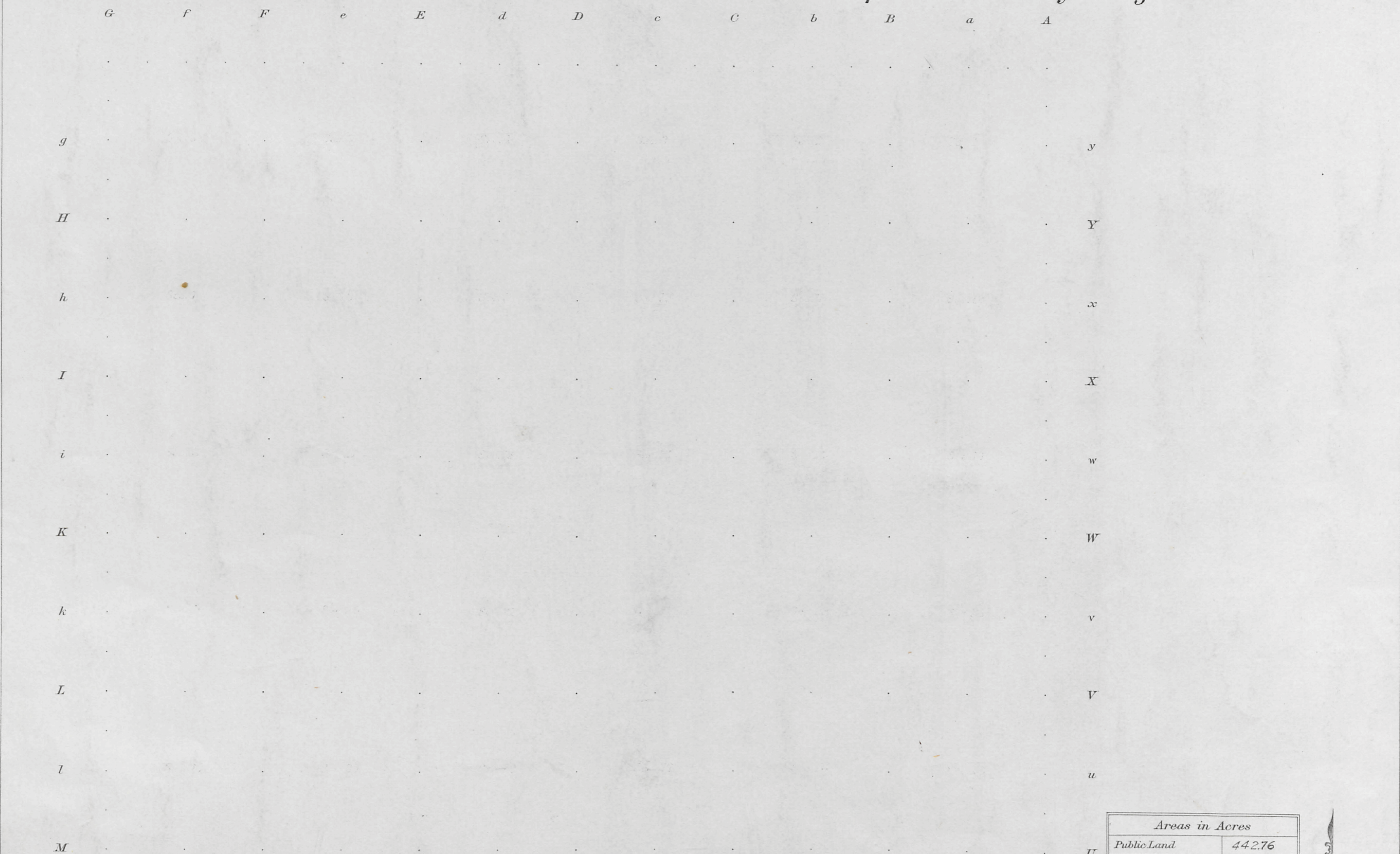
## T. 25 1/2 N., R. 115 W., Sixth Principal Meridian, Wyoming, Field Note Links

Plat Accession Number(s)	Year(s) of Survey	Township Subdivision Plats
-	1962	<a href="https://www.wy.blm.gov/cadastral/countyplats/lincoln/fieldnotes/t25nr115w_gp262fn.pdf">https://www.wy.blm.gov/cadastral/countyplats/lincoln/fieldnotes/t25nr115w_gp262fn.pdf</a>
4944	1917	<a href="https://www.wy.blm.gov/cadastral/countyplats/lincoln/fieldnotes/t25.5nr115w_gp046fn.pdf">https://www.wy.blm.gov/cadastral/countyplats/lincoln/fieldnotes/t25.5nr115w_gp046fn.pdf</a>
4944	1917	<a href="https://www.wy.blm.gov/cadastral/countyplats/lincoln/fieldnotes/t25.5nr115w_gp046fn_bnd.pdf">https://www.wy.blm.gov/cadastral/countyplats/lincoln/fieldnotes/t25.5nr115w_gp046fn_bnd.pdf</a>



Township No. 25 1/2 North, Range No. 115 West of the Sixth Principal Meridian, Wyoming

Survey Accepted March 16, 1920 G.L.O.



Areas in Acres	
Public Land	442.76
Indian Reservation	
Indian Allotments	
Mineral Claims	
Water Surface	
<b>Total Area</b>	<b>442.76</b>

Scale 40 Chains to an inch

Mean Magnetic Declination  
Latitude 42° 06' N  
Longitude 110° 27' W

Surveys Designated	By Whom Surveyed	Group No.	Date	Amount of Surveys		When Surveyed	
				Mls.	chs. fks.	Begun	Completed
Subdivision Lines	Hans D. Voigt	46	March 3, 1917	46	45	October 15, 1917	October 15, 1917
Connecting Lines	"	"	"	16	66	October 9, 1917	October 15, 1917
East Township Lines	"	"	"	8	68	October 9, 1917	October 9, 1917
West Township Line	"	"	"	9	31	" "	" "
Resurvey North Township Line	"	"	"	5	78	October 5, 1917	October 15, 1917
Retracement South Township Line	"	"	"	4	79	October 11, 1917	October 11, 1917
Resurvey South Township Line	Strahle and Van Orsdel	290	June 20, 1902	5	79	September 25, 1917	September 25, 1917

The above map of Township No. 25 1/2 North, Range No. 115 West of the Sixth Principal Meridian, Wyoming is strictly conformable to the field notes of the survey thereof on file in this office, which have been examined and approved

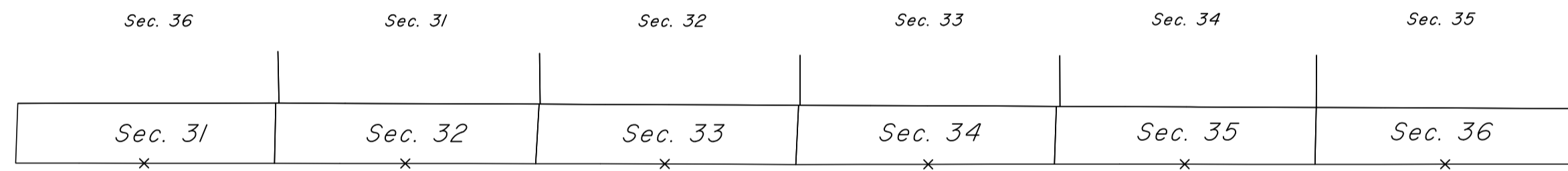
U. S. Surveyor General's Office.  
Cheyenne Wyoming May 7, 1918

Charles L. Decker  
Surveyor General.



TOWNSHIP 25½ NORTH, RANGE 115 WEST OF THE SIXTH PRINCIPAL MERIDIAN, WYOMING.

INDEX TO CORNER REMONUMENTATION WITHOUT SURVEY



NOT TO SCALE

*LEGEND*

*Remonumented Corner as Indicated*