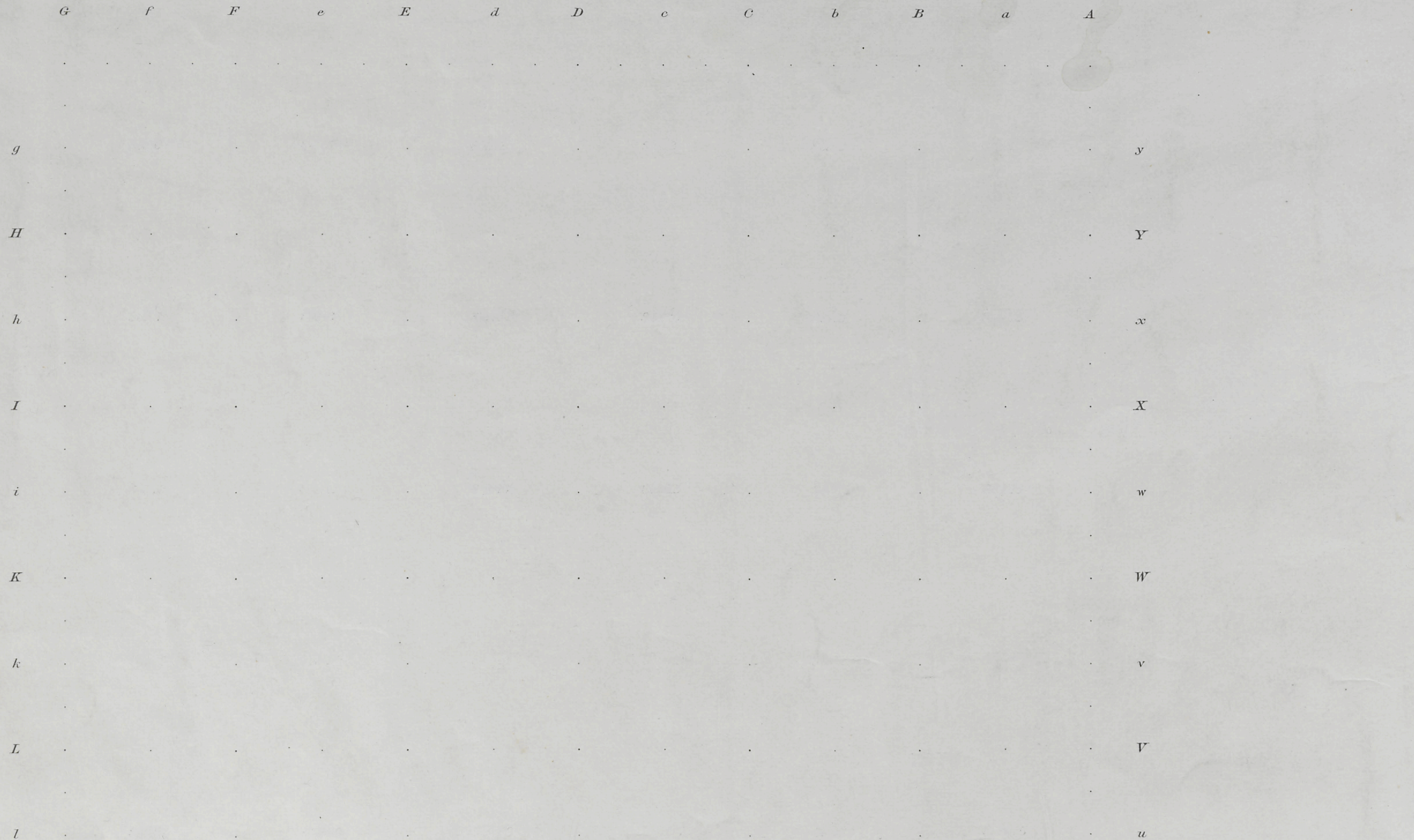


## T. 25 1/2 N., R. 116 W., Sixth Principal Meridian, Wyoming, Field Note Links

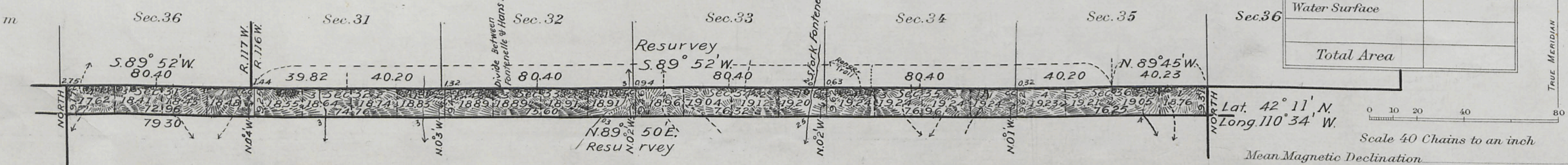
Plat Accession Number(s)	Year(s) of Survey	Township Subdivision Plats
4954	1917-18	<a href="https://www.wy.blm.gov/cadastral/countyplats/lincoln/fieldnotes/t25.5nr116w_gp046fn.pdf">https://www.wy.blm.gov/cadastral/countyplats/lincoln/fieldnotes/t25.5nr116w_gp046fn.pdf</a>



# Township N<sup>o</sup> 25½ North Range N<sup>o</sup> 116 West of the Sixth Principal Meridian Wyoming



Areas in Acres	
Public Land	452.85
Indian Reservation	
Indian Allotments	
Mineral Claims	
Water Surface	
Total Area	



Surveys Designated	By Whom Surveyed	Group			When Surveyed			
		No.	Date	Mls.	chs.	lks.	Began	Completed
North Bdy. Resurv.	Hans D. Voigt	46	Mar. 3, 1917	5	79	30	June 25, 1918	July 5, 1918
East "	" " "	"	" " "	"	9	31	Oct 16, 1917	Oct 16, 1917
West "	" " "	"	" " "	"	9	17	June 20, 1918	June 20, 1918
Subdivisions	" " "	"	" " "	"	47	39	" 24 "	July 5 "
Connections	" " "	"	" " "	"	7	40	" 20 "	" " "
South Bdy. Resurv.	Johnson & Jaekel	329	Dec. 4, 1907	5	79	30	July 17, 1908	July 18, 1908

The above map of Township No. 25½ North Range No. 116 West of the Sixth Principal Meridian Wyoming is strictly conformable to the field notes of the survey thereof on file in this office, which have been examined and approved

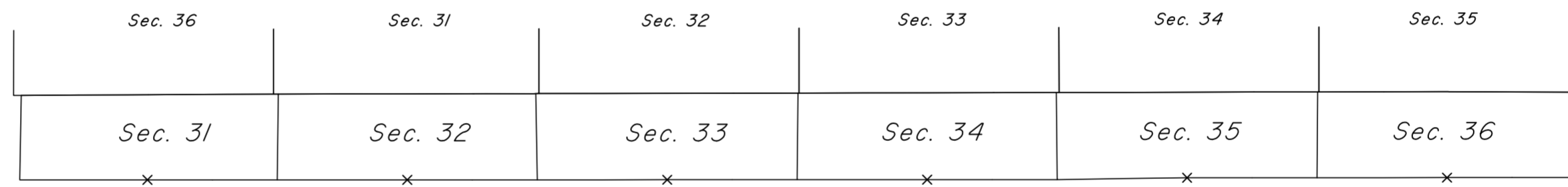
U. S. Surveyor General's Office.  
 Cheyenne, Wyoming. June 28, 1920

*Charles L. Deeter*  
 Surveyor General.



TOWNSHIP 25½ NORTH, RANGE 116 WEST OF THE SIXTH PRINCIPAL MERIDIAN, WYOMING.

INDEX TO CORNER REMONUMENTATION WITHOUT SURVEY



NOT TO SCALE

*LEGEND*

*Remonumented Corner as Indicated*