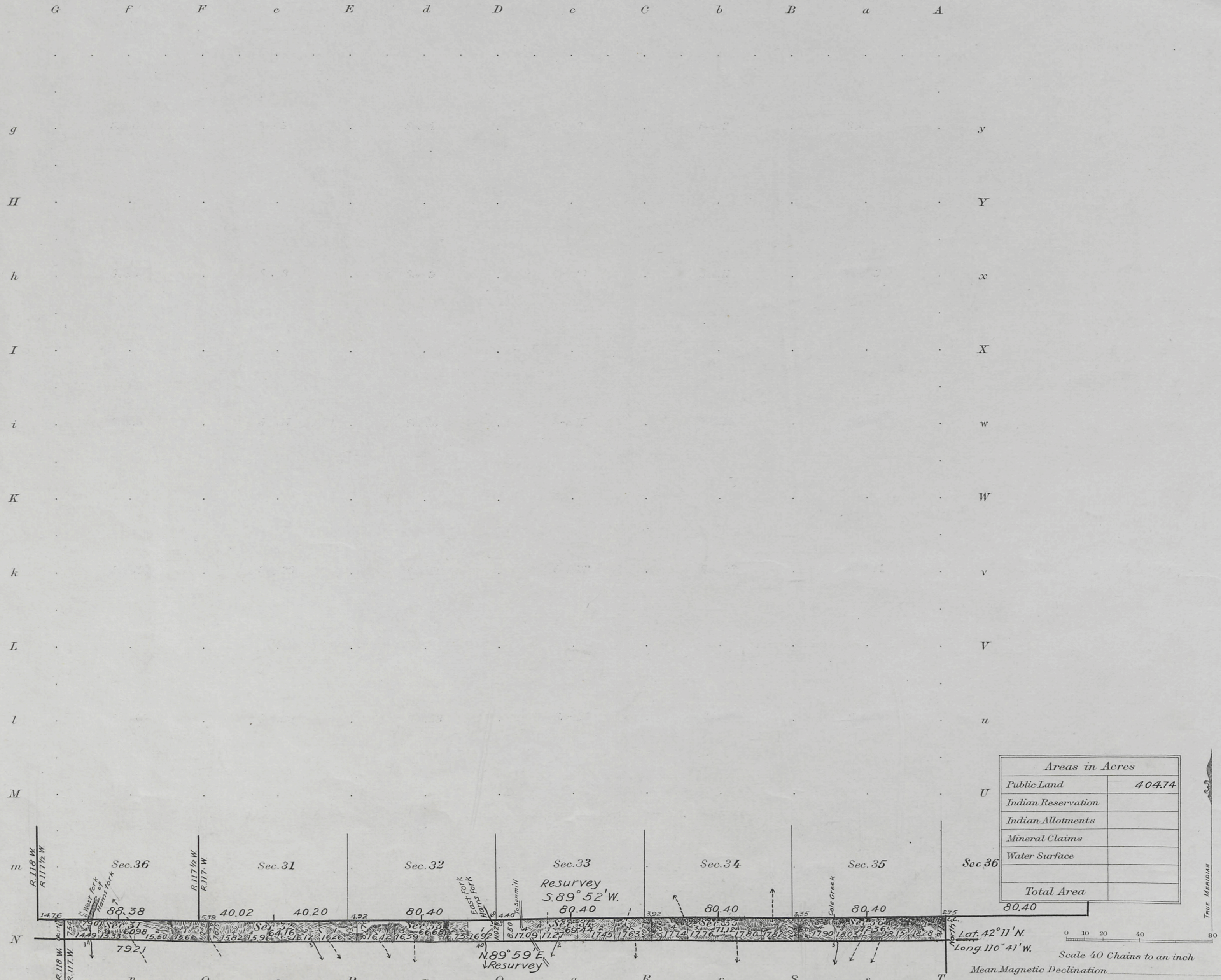


T. 25 1/2 N., R. 117 W., Sixth Principal Meridian, Wyoming, Field Note Links

Plat Accession Number(s)	Year(s) of Survey	Township Subdivision Plats
4956	1917	https://www.wy.blm.gov/cadastral/countyplats/lincoln/fieldnotes/t25.5nr117w_gp046fn.pdf

Township N^o 25½ North Range N^o 117 West of the Sixth Principal Meridian, Wyoming



Surveys Designated	By Whom Surveyed	Group		Amount of Surveys			When Surveyed	
		No.	Date	Mls.	chs.	lks.	Began	Completed
North Bdy. Resurv.	Hans D. Voigt	46	Mar 3, 1917	5	78	19	June 20, 1918	June 25, 1918
East "	" " "	"	" " "	"	9	17	" 20 "	" 20 "
West "	" " "	"	" " "	"	7	54	" 20 "	" 20 "
Subdivisions	" " "	"	" " "	"	42	32	" " "	" 24 "
Connections	" " "	"	" " "	"	36	74	" " "	" 24 "
South Bdy. Resurv.	Johnson & Jaeckel	Cent 329	Dec. 4, 1907	5	79	21	Aug. 5, 1908	Aug. 5, 1908

The above map of Township No. 25½ North Range No. 117 West of the Sixth Principal Meridian Wyoming is strictly conformable to the field notes of the survey thereof on file in this office, which have been examined and approved.

U. S. Surveyor General's Office.
Cheyenne, Wyoming, June 28, 1920

Charles L. Becker
Surveyor General.