

T. 25 1/2 N., R. 118 W., Sixth Principal Meridian, Wyoming, Field Note Links

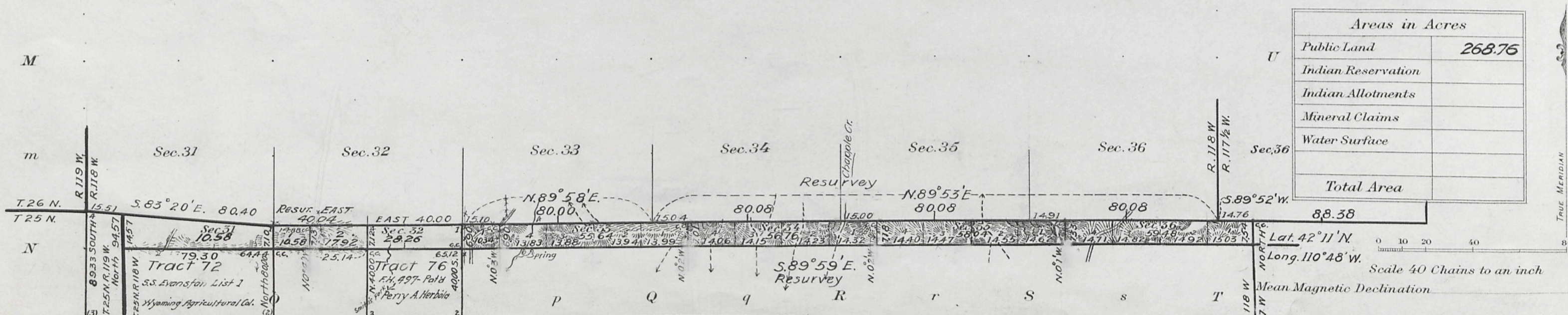
Plat Accession Number(s)	Year(s) of Survey	Township Subdivision Plats
4955	1918-22	https://www.wy.blm.gov/cadastral/countyplats/lincoln/fieldnotes/t25.5nr118w_gp058fn.pdf

Township N^o 25½ North Range N^o 118 West of the Sixth Principal Meridian Wyoming

G f F e E d D c C b B a A

Index to Segregated Tracts										
Resurvey			Original Survey							
Tract No.	T.	R.	T.	R.	Sec.	Subdivisions	Entry		Status	Entryman
							Kind	Number	in Land Office	
72	25	118	25	118	6	All.	S.S. Hg. College	List 1 Evanson L.O.	App'd	Wyoming
76	25	118	25	118	5	Lots 1 & 2, S½ NE¼	F.H.	497	Pat'd	Perry A. Herbold.

The tract segregations shown hereon which were created in the resurvey of Township No. 25 North, Range No. 118 West, of the Sixth Principal Meridian, Wyoming, approved March 31, 1909, represent the position and form of said tracts under the original description as referred to the original survey of Township No. 25 North, Range No. 118 West, located as such on the ground according to the best available evidence of their true position.



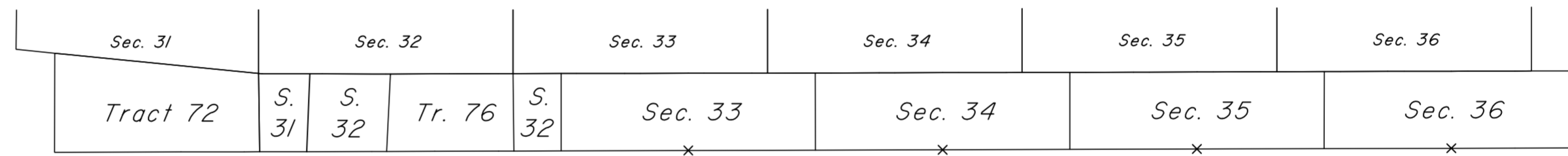
Surveys Designated	By Whom Surveyed	Group No.	Date	Amount of Surveys			When Surveyed	
				Mls.	chs.	lks.	Begun	Completed
North Bdy. Resurv.	Hans. D. Voigt	46	Mar. 3, 1917	4	15	00	June 19, 1918	June 20, 1918
East "	"	"	"	7	54	"	20	"
Subdivisions	"	"	"	28	42	"	19	"
Connections	"	"	"	74	81	"	"	"
South Bdy. Resurv.	Johnson & Jaeckel	309	Mar. 27, 1906	5	79	30	Oct. 13, 1907	Oct. 14, 1907
West "	"	"	"	"	"	"	"	"
North Bdy. Resurv.	Willis J. Millrick	58	Mar. 9, 1922	40	04	"	Sept. 16, 1922	Sept. 16, 1922
Subs. & Conn.	"	"	"	22	01	"	"	"

The above map of Township No. 25½ North Range No. 118 West of the Sixth Principal Meridian Wyoming is strictly conformable to the field notes of the survey thereof on file in this office, which have been examined and approved
U.S. Surveyor General's Office.
Cheyenne, Wyoming December 27, 1922

Edwin W. Atbury
Surveyor General.

TOWNSHIP 25½ NORTH, RANGE 118 WEST OF THE SIXTH PRINCIPAL MERIDIAN, WYOMING.

INDEX TO CORNER REMONUMENTATION WITHOUT SURVEY



NOT TO SCALE

LEGEND

Remonumented Corner as Indicated