

T. 25 N., R. 120 W., Sixth Principal Meridian, Wyoming, Field Note Links

Plat Accession Number(s)	Year(s) of Survey	
		Township Subdivision Plats
719	1917	https://www.wy.blm.gov/cadastral/countyplats/lincoln/fieldnotes/t25nr120w_gp046fn_t45.pdf
717; 718	1907	https://www.wy.blm.gov/cadastral/countyplats/lincoln/fieldnotes/t25nr120w_c321fn-plc.pdf
717; 718	1907	https://www.wy.blm.gov/cadastral/countyplats/lincoln/fieldnotes/t25nr120w_c309fn.pdf
716	1881	https://www.wy.blm.gov/cadastral/countyplats/lincoln/fieldnotes/t25nr120w_c114fn.pdf
		Township Exterior Plats
4878	1907	https://www.wy.blm.gov/cadastral/countyplats/lincoln/fieldnotes/ext2923.pdf
4878	1907	https://www.wy.blm.gov/cadastral/countyplats/lincoln/fieldnotes/retext2923.pdf
4744	1899	https://www.wy.blm.gov/cadastral/countyplats/lincoln/fieldnotes/ext2818.pdf
4744	1899	https://www.wy.blm.gov/cadastral/countyplats/lincoln/fieldnotes/retext2818.pdf
839	1881	https://www.wy.blm.gov/cadastral/countyplats/lincoln/fieldnotes/ext0839.pdf
787	1881	https://www.wy.blm.gov/cadastral/countyplats/lincoln/fieldnotes/ext0787.pdf

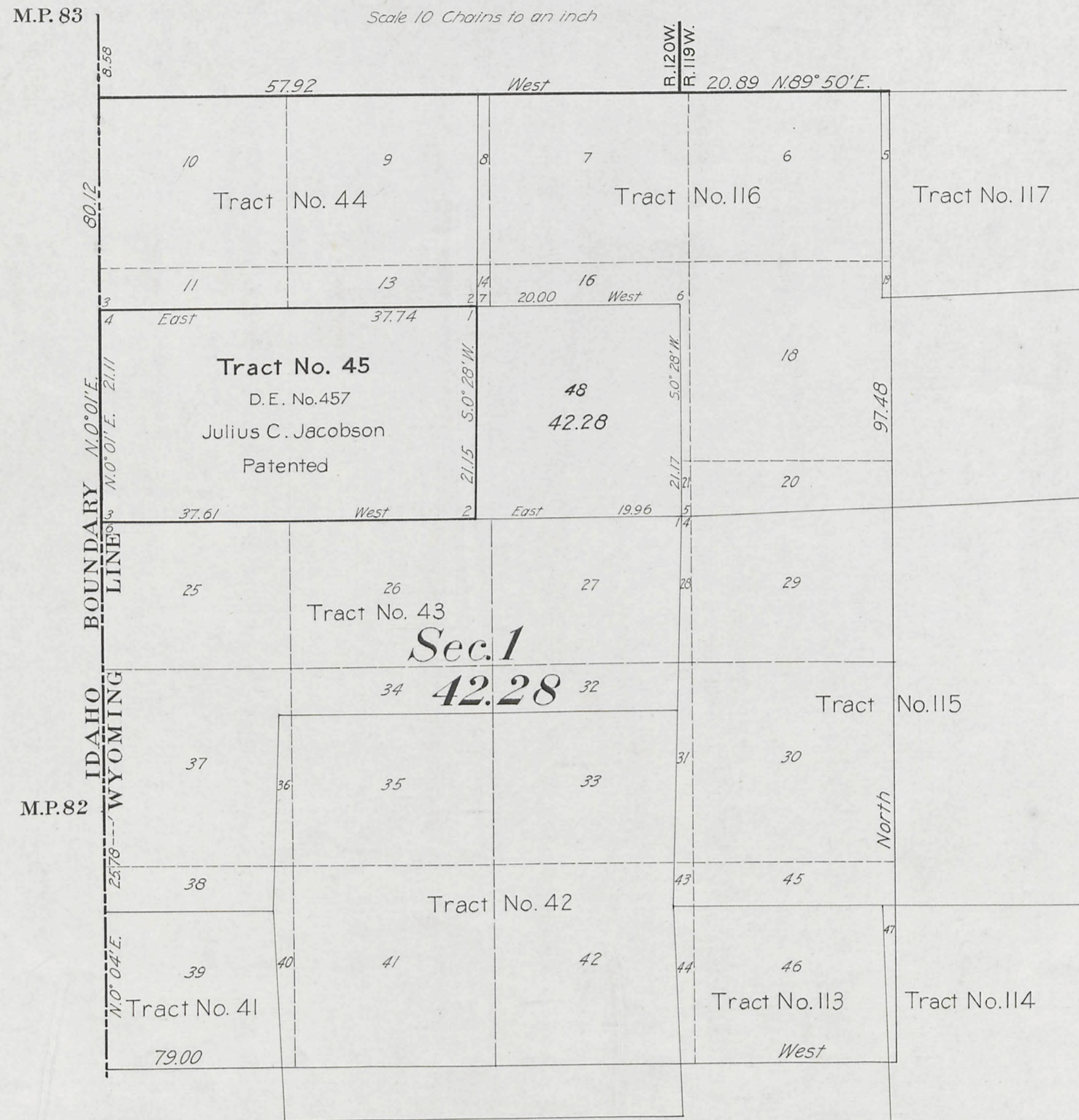
T. 25 N., R. 120 W., Sixth Principal Meridian, Wyoming, Field Note Links

Plat Accession Number(s)	Year(s) of Survey	State Boundary
-	1880	https://www.wy.blm.gov/cadastral/countyplats/lincoln/fieldnotes/sbretmp53_69fn.pdf
5996	1874	https://www.wy.blm.gov/cadastral/countyplats/lincoln/fieldnotes/wb_mp58-85.pdf

Supplemental Plat No. 2

Resurvey Township No. 25 North, Range No. 120 West of the Sixth Principal Meridian, Wyoming

Accepted Aug. 1, 1917
G.L.O.



Tract No. 45 represents the survey of patented D.E. No. 457 of Julius C. Jacobson, described as SW¹/₄NE¹/₄; SE¹/₄NW¹/₄ Section 1, on plat of original survey of T. 25 N., R. 120 W. approved September 9, 1881
Tract No. 45 surveyed May 13-16, 1917

This Supplemental Plat of Section 1 of Resurvey Township No. 25 North, Range No. 120 West of the Sixth Principal Meridian, Wyoming, plat approved March 31, 1909, showing segregation of Tract No. 45 and fractional lot created thereby, is prepared in strict conformity with office records and field notes of survey executed by Emil Vaigt, U.S. Transitman, under supplemental special instructions, Group No. 46, dated February 19, 1917 and is hereby approved
Office of U.S. Surveyor General,
Cheyenne, Wyoming,
June 20, 1917

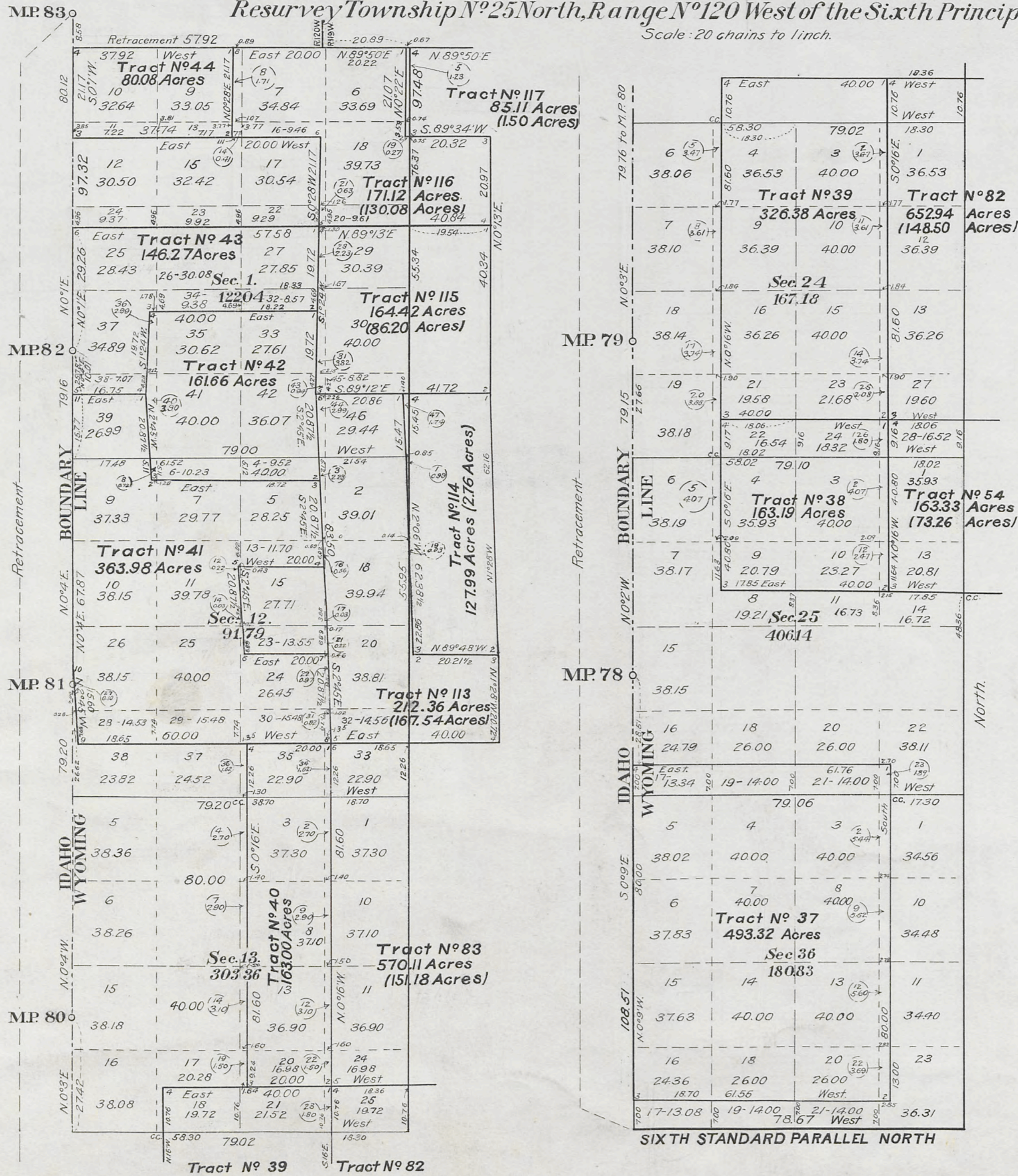
Charles L. Decker

Surveyor General

Accession 718

Supplemental Plat
Resurvey Township N^o 25 North, Range N^o 120 West of the Sixth Principal Meridian, Wyoming
 Scale: 20 chains to an inch.

Secs 1, 12, 13, 24, 25 & 36



This Supplemental Plat of the Resurvey of Township N^o 25 North Range N^o 120 West of the Sixth Principal Meridian, Wyoming, is strictly conformable to the field notes of the resurvey thereof on file in this office, which have been examined and approved. Surveyor General's Office, Cheyenne, Wyoming, March 31, 1909.

Alphons P. Johnson
 Surv. Gen.

Resurveys.
 Johnson & Jaeckel, D.S.
 Contract N^o 309, March 27, 1906.
 Contract N^o 321, February 28, 1907.

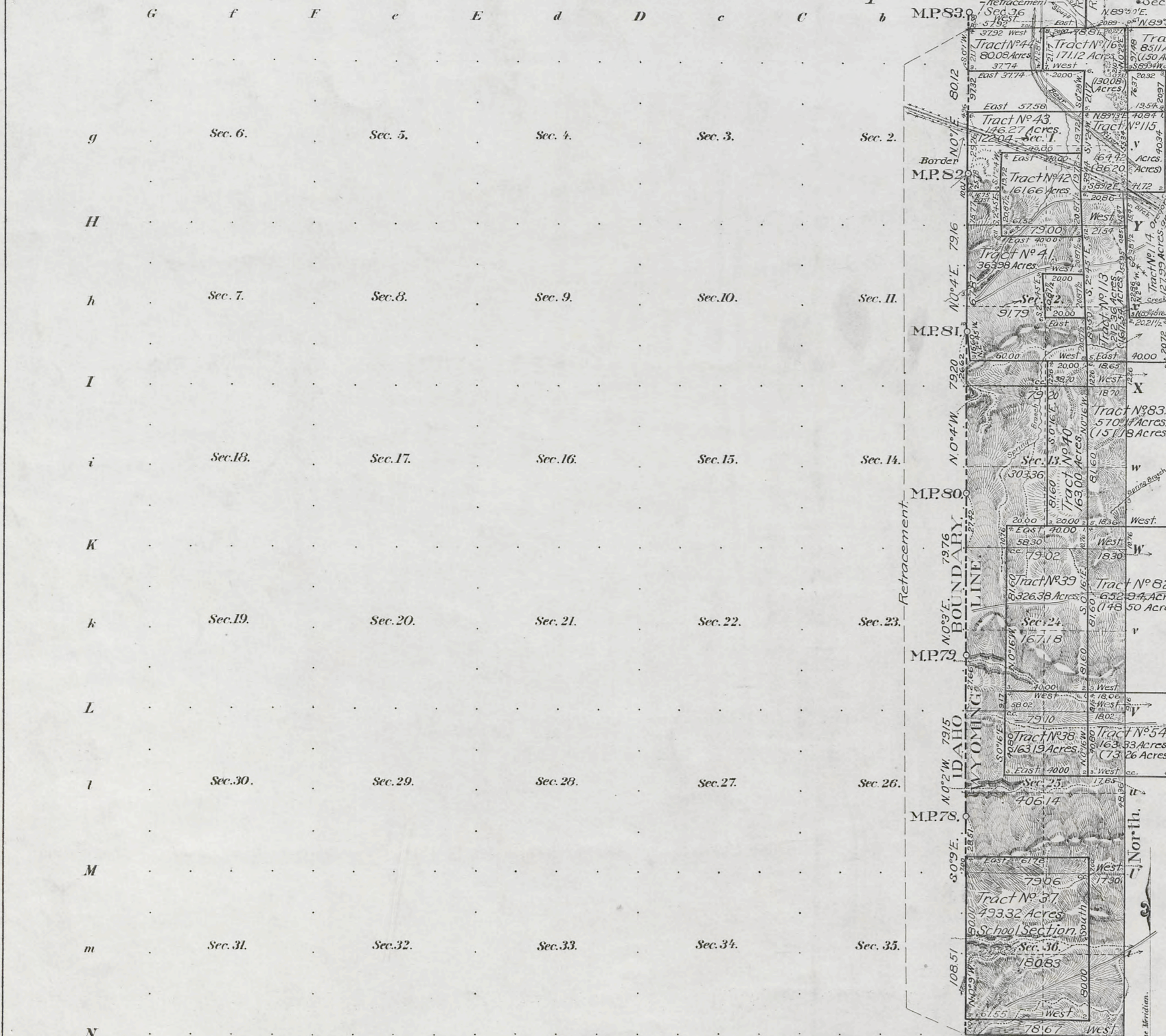
Accepted by Hon. Commissioner in letter of June, 1909.
 Duplicate plat forwarded to Evanston Land Office, June, 10, 1909.

569B

(4-675d)

Resurvey Township N^o25 North, Range N^o120 West of the Sixth Principal Meridian, Wyoming.

See Suppl. Plat



Meanders of table with columns: Posts, Courses, Ch. Lk., Posts, Courses, Ch. Lk., Posts, Courses, Ch. Lk.

INDEX TO SEGREGATED TRACTS. ORIGINAL SURVEY table with columns: Tract No., T., R., Sec., Subdivision, Entry Kind No., Entryman.

Segregated Tracts table with columns: Number, Total Areas, In Township.

Table with columns: Surveys Designated, By Whom Surveyed, Date of Contract, Amount of Surveys, When Surveyed.

SIXTH STANDARD PARALLEL NORTH. Sec. 2 of resurvey Sec. 1. The above map of Township N^o25 North of Range N^o120 West of the Sixth Principal Meridian, Wyoming is strictly conformable to the field notes of the survey thereof on file in this office, which have been examined and approved. Surveyor General's Office, Cheyenne, Wyoming, March 31, 1909.

Latitude 42° 06' N. Longitude 111° 02' W. Mag. Decl. 17° 58' E.

THE NORRIS PETERS CO LITHO. WASHINGTON, D. C.

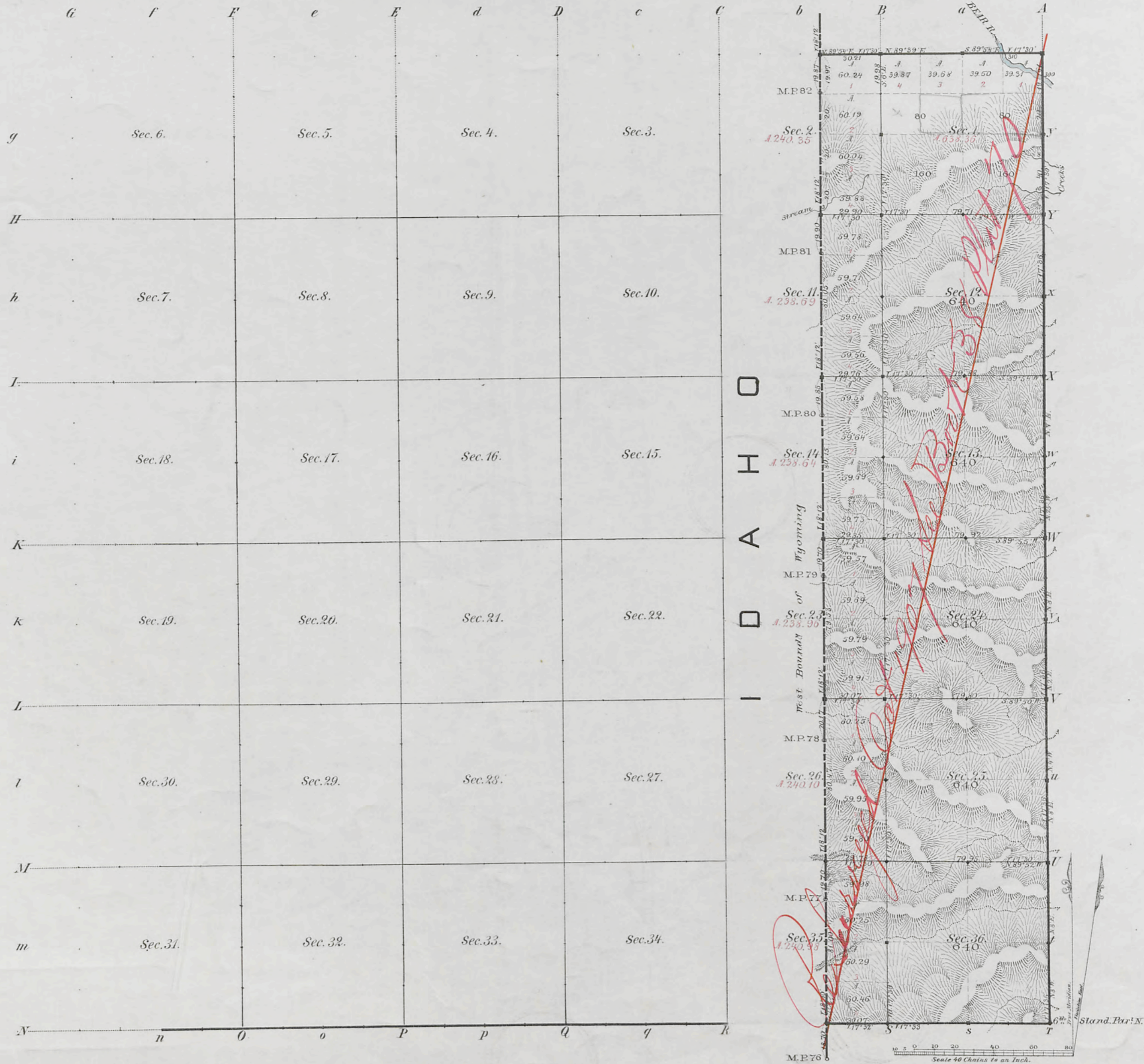
Accepted by Hon. Commissioner in letter of June 1, 1909. Duplicate plat forwarded to Evansston land office, June 10, 1909.

25-120

569A

716

TOWNSHIP N^o 25 NORTH RANGE N^o 120 WEST of the 6th Principal MERIDIAN.



Total number of Acres. 5,276.03

Surveys Designated	By Whom Surveyed	Date of Contract	Amount of Surveys M ^o C ^o A ^o R ^o	When Surveyed	Magnetic Decl ⁿ
N. E. Township lines	Holcomb & Woods	January 3, 1831	7 29 82	March 1831	17° 35' East
Subdivisions	McCoy & Woods	Septbr. 22, 1830	12 68 60	May 1831	17° 30' "
Connections	" " " "	" " " "	1 19 32	" "	" "
6 th Stand. Mer ⁿ	James F. Woods	" 20, "	1 30 7	March 1831	" "
W. Bound ⁿ of Wyo ^o	A. F. Richards	May 29, 1878	6 1 11	June 1874	" "

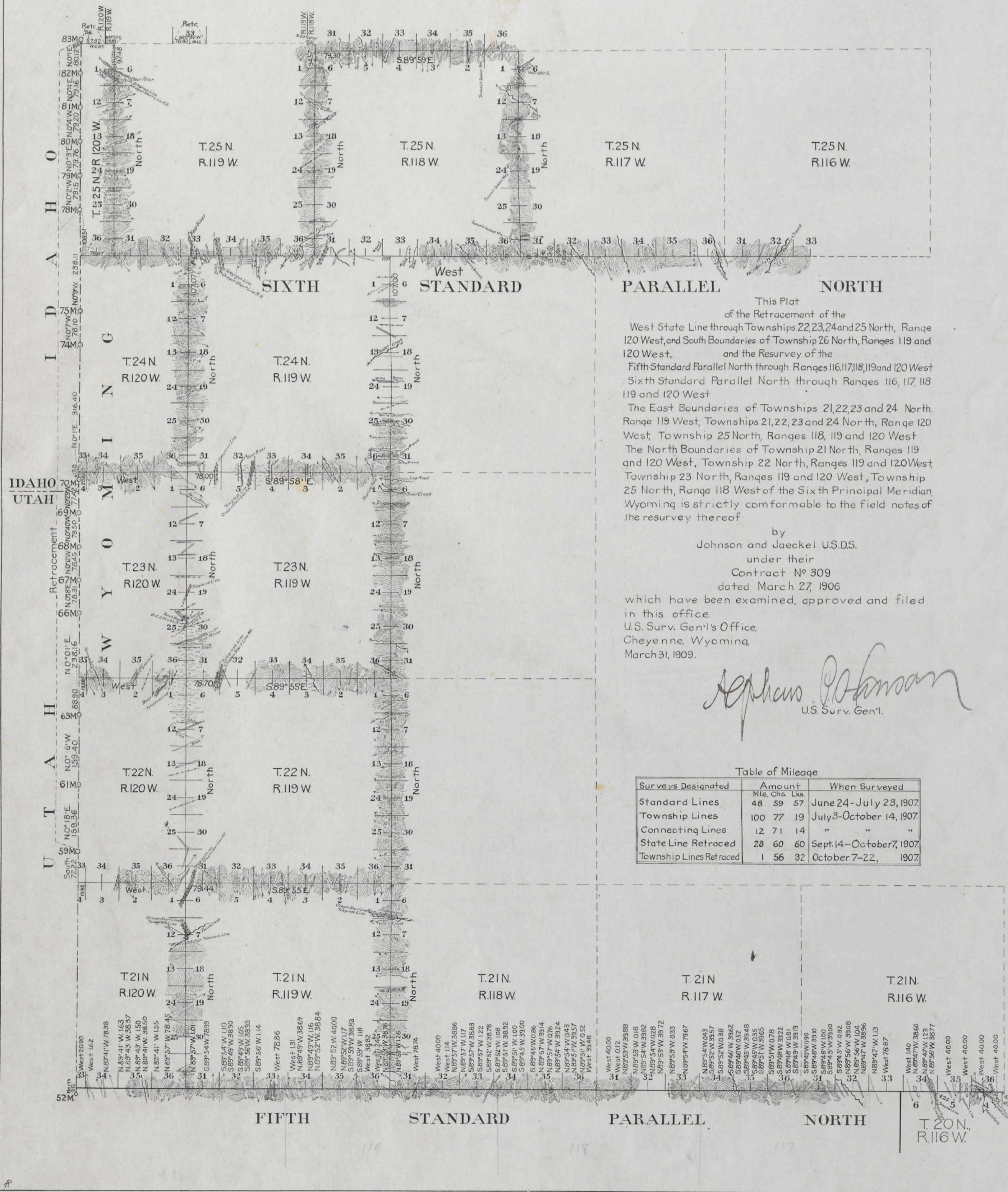
The above Map of Township N^o 25 North of Range N^o 120 West of the 6th Principal Meridian, Wyoming Territory, is strictly conformable to the field notes of the survey thereof on file in this Office, which have been examined and approved

Surveyor General's Office, *Edw. C. Davis* Gen^l
Cheyenne, Wyo. Sept. 9th 1881

Case
25-120

RESURVEY TOWNSHIP EXTERIORS

Scale: 1 inch to 160 chains



This Plat
of the Retracement of the
West State Line through Townships 22, 23, 24 and 25 North, Range
120 West, and South Boundaries of Township 26 North, Ranges 119 and
120 West,
and the Resurvey of the
Fifth Standard Parallel North through Ranges 116, 117, 118, 119 and 120 West
Sixth Standard Parallel North through Ranges 116, 117, 118
119 and 120 West
The East Boundaries of Townships 21, 22, 23 and 24 North
Range 119 West, Townships 21, 22, 23 and 24 North, Range 120
West, Township 25 North, Ranges 118, 119 and 120 West
The North Boundaries of Township 21 North, Ranges 119
and 120 West, Township 22 North, Ranges 119 and 120 West,
Township 23 North, Ranges 119 and 120 West, Township
25 North, Range 118 West of the Sixth Principal Meridian,
Wyoming is strictly conformable to the field notes of
the resurvey thereof

by
Johnson and Jaeckel U.S.D.S.
under their
Contract No 309
dated March 27, 1906

which have been examined, approved and filed
in this office.
U.S. Surv. Gen'l's Office,
Cheyenne, Wyoming,
March 31, 1909.

Stephen Johnson
U.S. Surv. Gen'l.

Table of Mileage

Surveys Designated	Amount		When Surveyed
	Mis.	Chs. Lks.	
Standard Lines	48	59 57	June 24-July 23, 1907
Township Lines	100	77 19	July 3-October 14, 1907
Connecting Lines	12	71 14	" " " "
State Line Retraced	23	60 60	Sept. 14-October 7, 1907
Township Lines Retraced	1	56 32	October 7-22, 1907

Accepted by State Commissioner, in letter E,
June 1, 1909.

TOWNSHIP EXTERIORS

Scale: 1 inch = 160 chains.

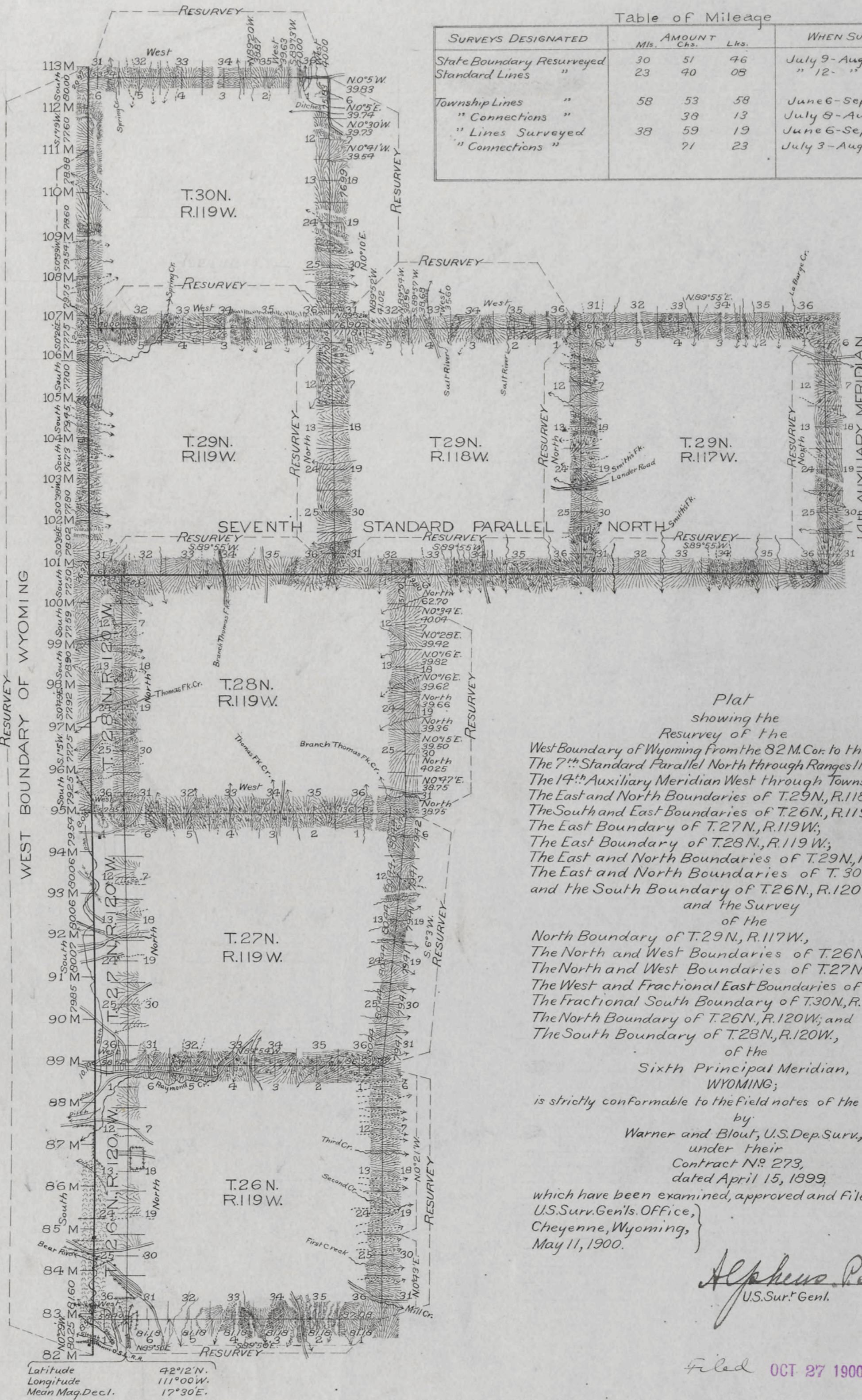


Table of Mileage

SURVEYS DESIGNATED	AMOUNT		WHEN SURVEYED
	Mls.	Chs.	
State Boundary Resurveyed	30	51	46
Standard Lines	23	40	05
Township Lines	58	53	58
"Connections"		38	13
"Lines Surveyed"	38	59	19
"Connections"		71	23

Plat showing the Resurvey of the West Boundary of Wyoming from the 82 M. Cor. to the 113 M. Cor.; The 7th Standard Parallel North through Ranges 117, 118 and 119 W.; The 14th Auxiliary Meridian West through Township 29 North; The East and North Boundaries of T. 29 N., R. 118 W.; The South and East Boundaries of T. 26 N., R. 119 W.; The East Boundary of T. 27 N., R. 119 W.; The East Boundary of T. 28 N., R. 119 W.; The East and North Boundaries of T. 29 N., R. 119 W.; The East and North Boundaries of T. 30 N., R. 119 W.; and the South Boundary of T. 26 N., R. 120 W. of the North Boundary of T. 29 N., R. 117 W.; The North and West Boundaries of T. 26 N., R. 119 W.; The North and West Boundaries of T. 27 N., R. 119 W.; The West and Fractional East Boundaries of T. 28 N., R. 119 W.; The Fractional South Boundary of T. 30 N., R. 119 W.; The North Boundary of T. 26 N., R. 120 W.; and The South Boundary of T. 26 N., R. 120 W. of the Sixth Principal Meridian, WYOMING; is strictly conformable to the field notes of the survey thereof by Warner and Blout, U.S. Dep. Surv., under their Contract No. 273, dated April 15, 1899, which have been examined, approved and filed in this office. U.S. Surv. Gen'l's Office, Cheyenne, Wyoming, May 11, 1900.

Alpheus B. Hanson
U.S. Sur. Genl.

Filed OCT 27 1900

Comm. letter Oct. 24-1900

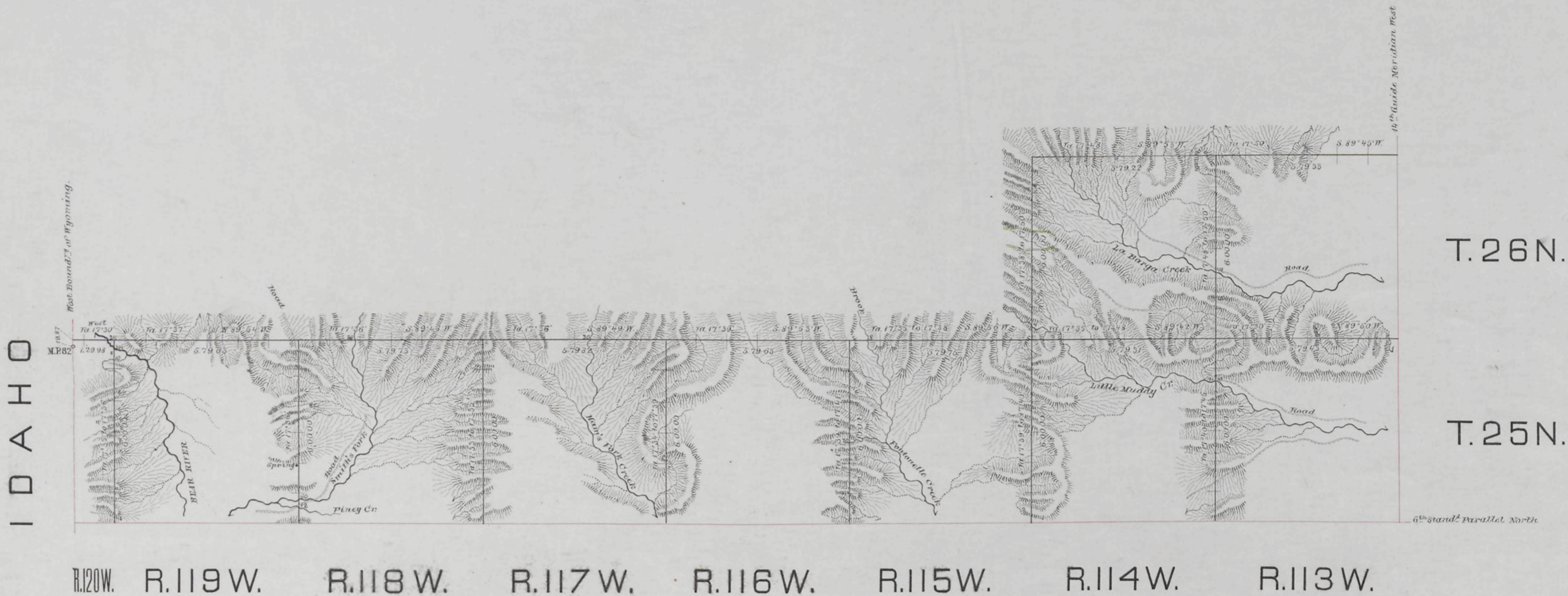
Indexed

839

EXTERIOR LINES

Scale, 3 miles to an inch.

Magnetic Variat. East.



Surveys Designated	By whom surveyed	Date of Contract	Amount of Surveys		Men surveyed
			mts.	acs.	
Exterior lines	Holcomb & Woods	January 3, 1831	109	25	83 Febr & March 1831
Connections	"	"	19	87	March 1831

I hereby certify that the above diagram of the exterior lines of Township 25N, Ranges 113W to the West Boundary of Wyoming Territory, Township 26N, Ranges 113 & 114 West of the 6th Principal Meridian, is strictly conformable to the field notes of the survey thereof on file in this Office, which have been examined and approved.

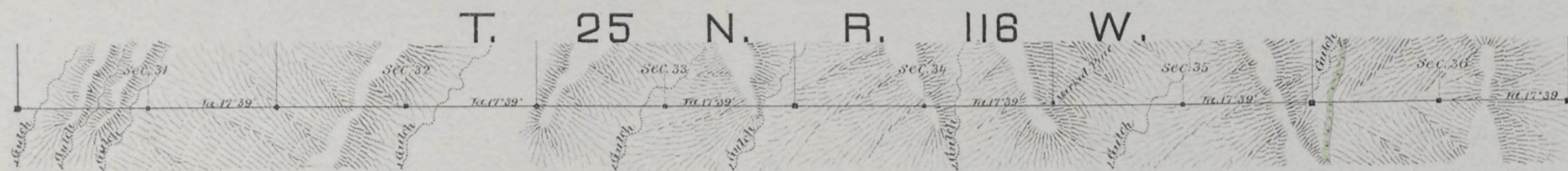
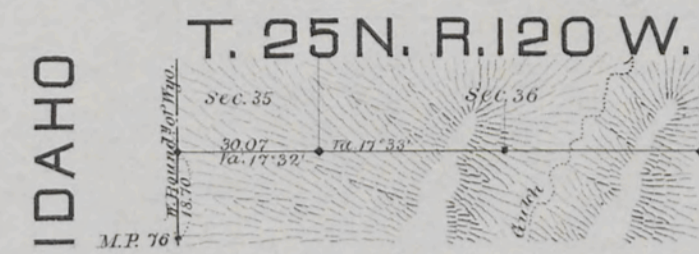
Surveyor General's Office,
Cheyenne, Wyo. Sept. 9th 1831

Edw. C. Davis
Surveyor General.

11.
Index

6TH STANDARD PARALLEL NORTH.

From the 14TH Guide Meridian West, to the West Boundary of Wyom. Territory, between Townships 24 & 25 N., Ranges 113 to 120 inclusive, and West of the 6TH Principal Meridian.



Scale, 40 chains to an inch.

Magnetic variation East.

Surveys Designated	By whom surveyed	Date of Contract	Amount of Surveys			When surveyed
			sq. mts.	chs.	secs.	
6 th Stand ^d Par ^l North	James E. Woods	September 20, 1880	43	30	7	March 1881
Connections	"	"	0	18	70	"
Convergency	"	"	1	44	95	"

I hereby certify that the above diagram of the 6th Standard Parallel North, from the 14th Guide Meridian West to the West Boundary of Wyoming Territory, between Townships 24 & 25 N., Ranges 113 to 120 inclusive, and West of the 6th Principal Meridian, Wyoming Territory, is strictly conformable to the field notes of the survey thereof on file in this Office, which have been examined and approved.

Surveyor General's Office,
Cheyenne, Wyo. June 23rd 1881.

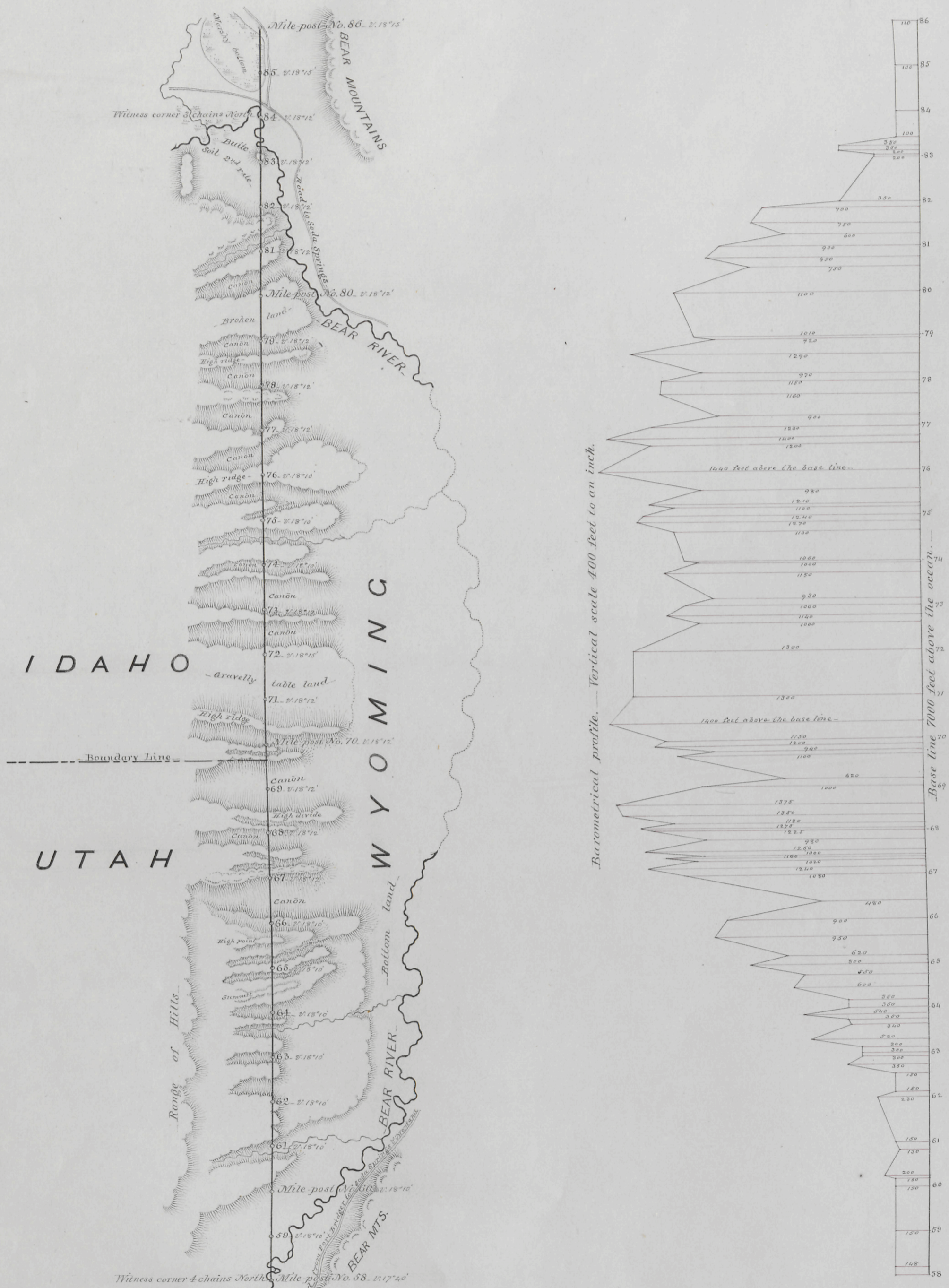
Edw. C. David
Surveyor General.

WEST BOUNDARY OF WYOMING

LONGITUDE 34 WEST

From mile-post No. 58, to mile-post No. 86.

Scale 2 miles to an inch. Magnetic Variation East



I Hereby Certify, that the above map is a correct representation of so much of the survey of the West Boundary of Wyoming, as extends from mile-post No. 58 to mile-post No. 86, as surveyed and marked by me, under Contract from the Commissioner of the General Land Office, dated May 29th 1873

A. V. Dickhaut
U. S. Astronomer and Surveyor.