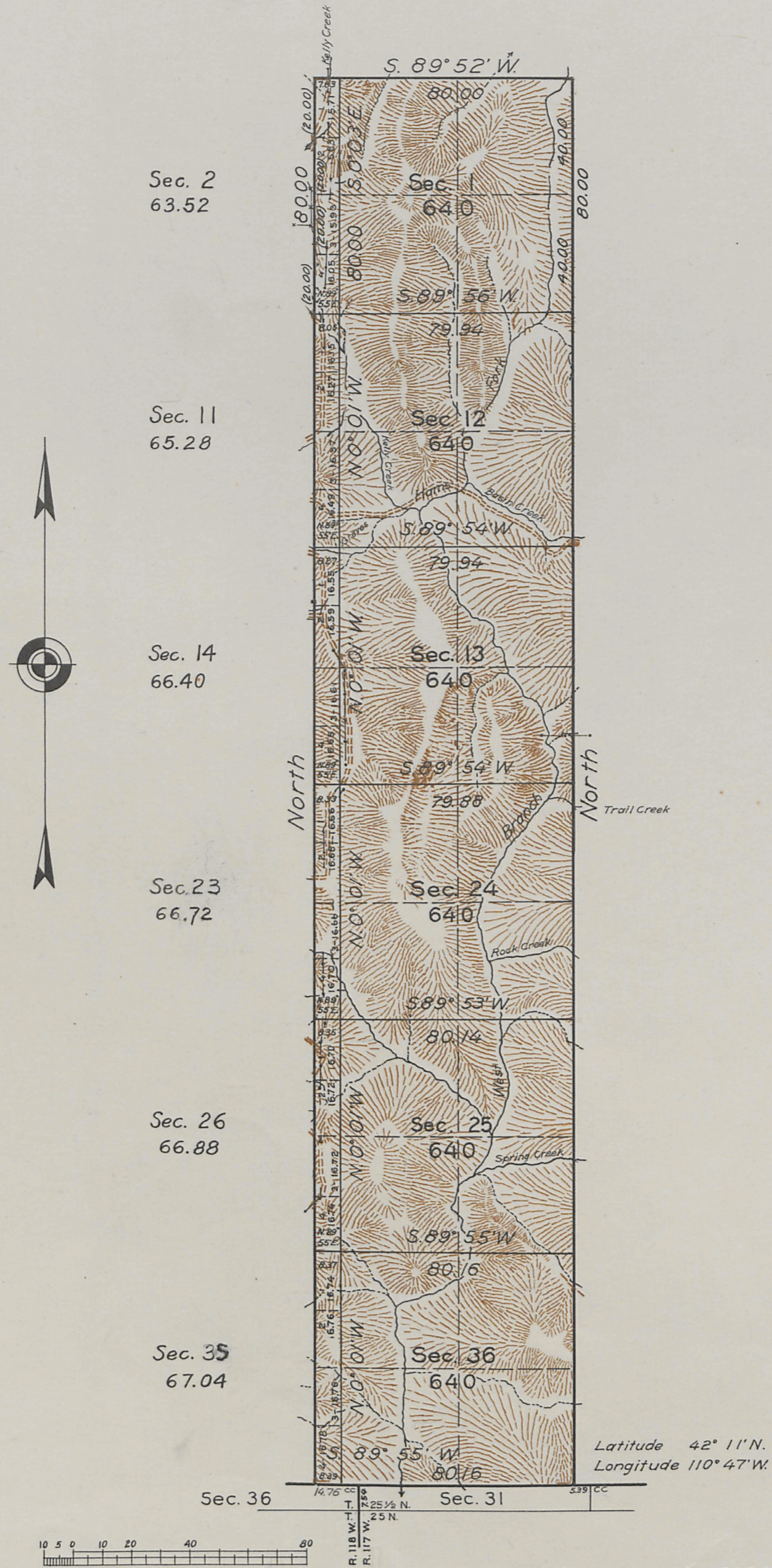


## T. 26 N., R. 117 1/2 W., Sixth Principal Meridian, Wyoming, Field Note Links

Plat Accession Number(s)	Year(s) of Survey	Township Subdivision Plats
6052	1932-34	<a href="https://www.wy.blm.gov/cadastral/countyplats/lincoln/fieldnotes/t26nr117.5w_gp118fn.pdf">https://www.wy.blm.gov/cadastral/countyplats/lincoln/fieldnotes/t26nr117.5w_gp118fn.pdf</a>

TOWNSHIP No. 26 NORTH. RANGE No. 117 1/2 WEST OF THE SIXTH PRINCIPAL MERIDIAN, WYOMING



Office of U.S. Supervisor of Surveys  
 Denver, Colorado, January 15, 1936.  
 This plat of Township No. 26 North, Range No. 117 1/2 West of the Sixth Principal Meridian, Wyoming, is strictly conformable to the field notes of the survey thereof which have been examined and approved

*Donald H. Johnson*  
 U.S. Supervisor of Surveys

DEPARTMENT OF THE INTERIOR  
 GENERAL LAND OFFICE  
 Washington, D.C., April 6, 1936.  
 The survey represented by this plat having been correctly executed in accordance with the requirements of law and the regulations of this office is hereby accepted

*Antonette Frank*  
 Assistant Commissioner

Scale: 40 Chains to an Inch

Area Surveyed 4,235.84 Acres

LINES DESIGNATED	BY WHOM SURVEYED	GROUP		MILEAGE		WHEN SURVEYED	
		No.	DATE	MLS.	CHS.	BEGUN	COMPLETED
Exterior	Voigt and Petersen	118	April 30, 1931	14	16.38	May 17, 1932	Sept. 7, 1933
Subdivisional	Leo M. Petersen			11	41.43	Aug. 26, 1933	Sept. 7, 1933

3007

Transmitted to  
 Eravator L.O.  
 Oct 7, 1936

26-117 1/2

RCM  
*A.P.W.*  
 70