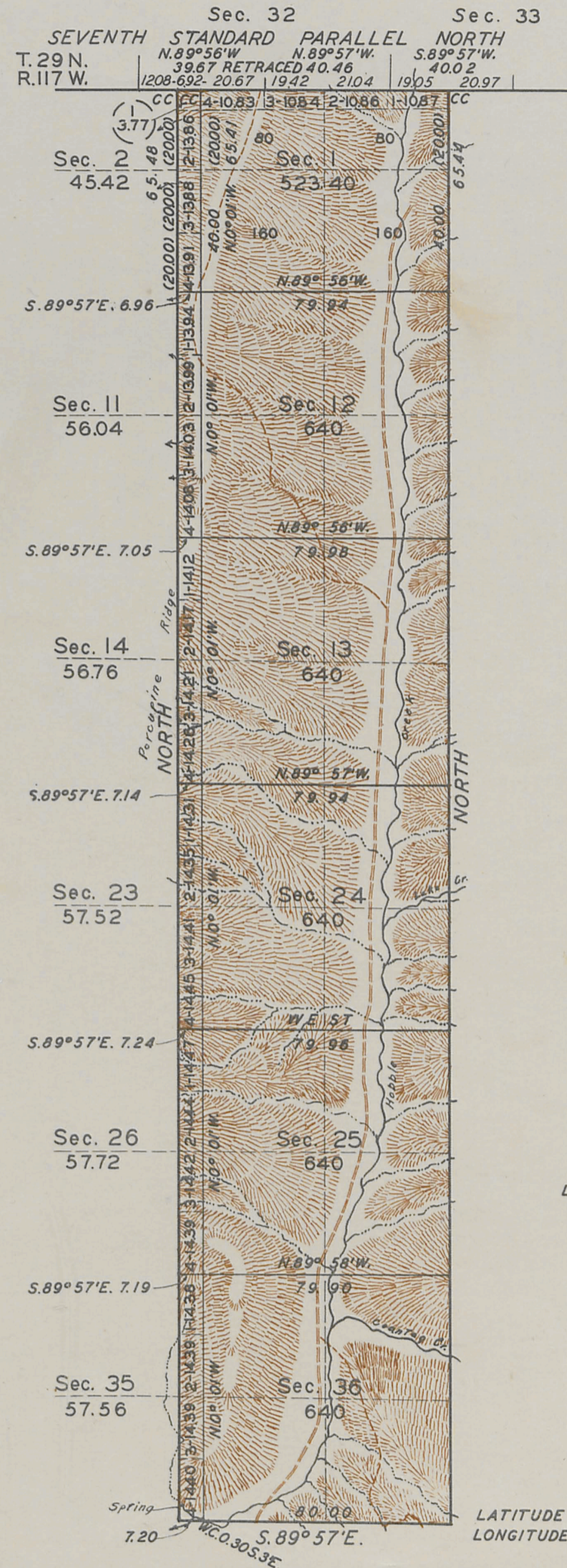


T. 28 N., R. 117 1/2 W., Sixth Principal Meridian, Wyoming, Field Note Links

Plat Accession Number(s)	Year(s) of Survey	Township Subdivision Plats
6068	1933-34	https://www.wy.blm.gov/cadastral/countyplats/lincoln/fieldnotes/t28nr117.5w_gp118fn.pdf

FRACTIONAL TOWNSHIP N° 28 NORTH, RANGE N° 117½ WEST OF THE SIXTH PRINCIPAL MERIDIAN, WYOMING.

INDEPENDENT RESURVEY.



SURVEY AUTHORIZED BY COMMISSIONER'S LETTER "E" DATED MARCH 11, 1931

LINES DESIGNATED	BY WHOM SURVEYED	GROUP		MILEAGE		WHEN SURVEYED	
		NO.	DATE	MLS.	CHS.	BEGUN	COMPLETED
SUBDIVISIONAL	CRAWFORD & MACDONALD	118	APR. 30, 1931	11	20.71	JUNE 19, 1934	AUG. 20, 1934
EXTERIOR RESURVEY	"	"	"	7	79.74	"	"
CONNECTING	"	"	"	0	57.47	"	"
W. BDY. RESURVEY	EMIL VOIGT	"	"	5	65.48	AUG. 7, 1933	AUG. 21, 1933
7TH S.P.N. RESURVEY	WARNER & BLOUT	"	"	"	"	AUG. 13, 1899	AUG. 17, 1899

OFFICE OF U. S. SUPERVISOR OF SURVEYS
DENVER, COLORADO, JUNE 1, 1935
THE ABOVE PLAT OF TOWNSHIP NO. 28 NORTH, RANGE NO. 117½ WEST OF THE SIXTH PRINCIPAL MERIDIAN, WYOMING, IS STRICTLY CONFORMABLE TO THE FIELD NOTES OF THE SURVEY THEREOF WHICH HAVE BEEN EXAMINED AND APPROVED

DEPARTMENT OF THE INTERIOR
GENERAL LAND OFFICE
WASHINGTON, D.C., JULY 3, 1935.
THE SURVEY REPRESENTED BY THIS PLAT HAVING BEEN CORRECTLY EXECUTED IN ACCORDANCE WITH THE REQUIREMENTS OF LAW AND THE REGULATIONS OF THIS OFFICE, IS HEREBY ACCEPTED

Wm. H. Johnson
U. S. SUPERVISOR OF SURVEYS

Antonette Lund
ASSISTANT COMMISSIONER

3004

Transmitted to Granton L.O.
April 27, 1936.

28-117½