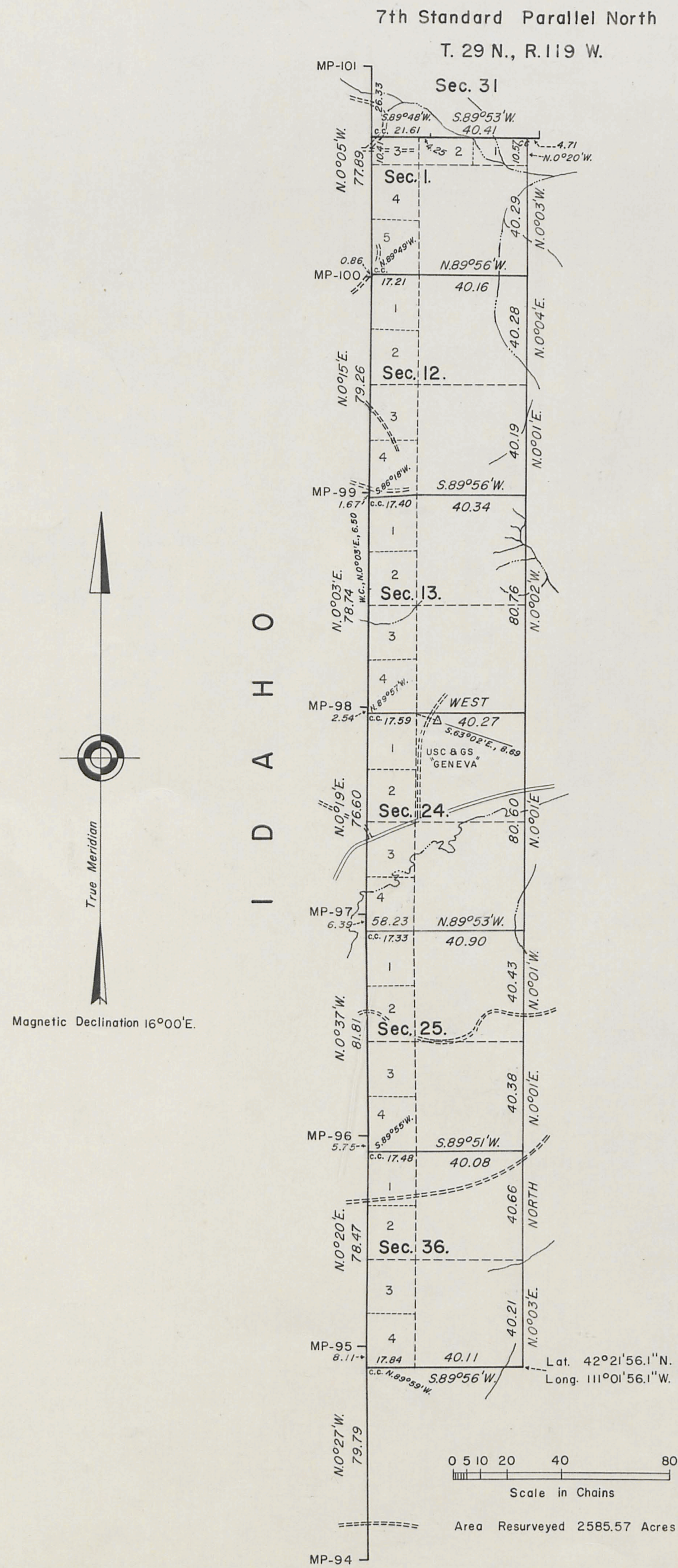


T. 28 N., R. 120 W., Sixth Principal Meridian, Wyoming, Field Note Links

Plat Accession Number(s)	Year(s) of Survey	
		Township Subdivision Plats
6932	1962	https://www.wy.blm.gov/cadastral/countyplats/lincoln/fieldnotes/t28nr120w_gp276fn.pdf
4754	1899	https://www.wy.blm.gov/cadastral/countyplats/lincoln/fieldnotes/t28nr120w_c273fn.pdf
		Township Exterior Plats
4744	1899	https://www.wy.blm.gov/cadastral/countyplats/lincoln/fieldnotes/ext2818.pdf
4744	1899	https://www.wy.blm.gov/cadastral/countyplats/lincoln/fieldnotes/retext2818.pdf
		State Boundary
5997	1874	https://www.wy.blm.gov/cadastral/countyplats/lincoln/fieldnotes/wb_mp86-113.pdf

TOWNSHIP 28 NORTH, RANGE 120 WEST, OF THE SIXTH PRINCIPAL MERIDIAN, WYOMING

DEPENDENT RESURVEY



This plat represents a retracement of a portion of the Wyoming-Idaho State Line between Mile Posts 94 and 101 and the retracement and reestablishment of the south boundary and subdivisional lines designed to restore the corners in their true original locations according to the best available evidence. The lottings and areas are as shown on the plat approved May 11, 1900.

The history of previous surveys is contained in the field note record. A portion of the Seventh Standard Parallel North, through Range 119 West, and the east boundary were dependently resurveyed concurrently with this group and the record appears in the field notes of the dependent resurvey of T. 28 N., R. 119 W.

This resurvey was executed by Jack A. Eaves and Carl W. Enix, beginning July 10, 1962, and completed September 14, 1962, pursuant to Special Instructions for Group No. 276, Wyoming dated June 29, 1962.

UNITED STATES DEPARTMENT OF THE INTERIOR
BUREAU OF LAND MANAGEMENT
Washington, D. C. October 9, 1963

This plat is strictly conformable to the approved field notes, and the survey, having been correctly executed in accordance with the requirements of law and the regulations of this Bureau, is hereby accepted.

For the Director

E. E. Remington
Chief, Division of Engineering

1754

Fractional Township N° 28 North Range N° 120 West of the 6th Principal Meridian

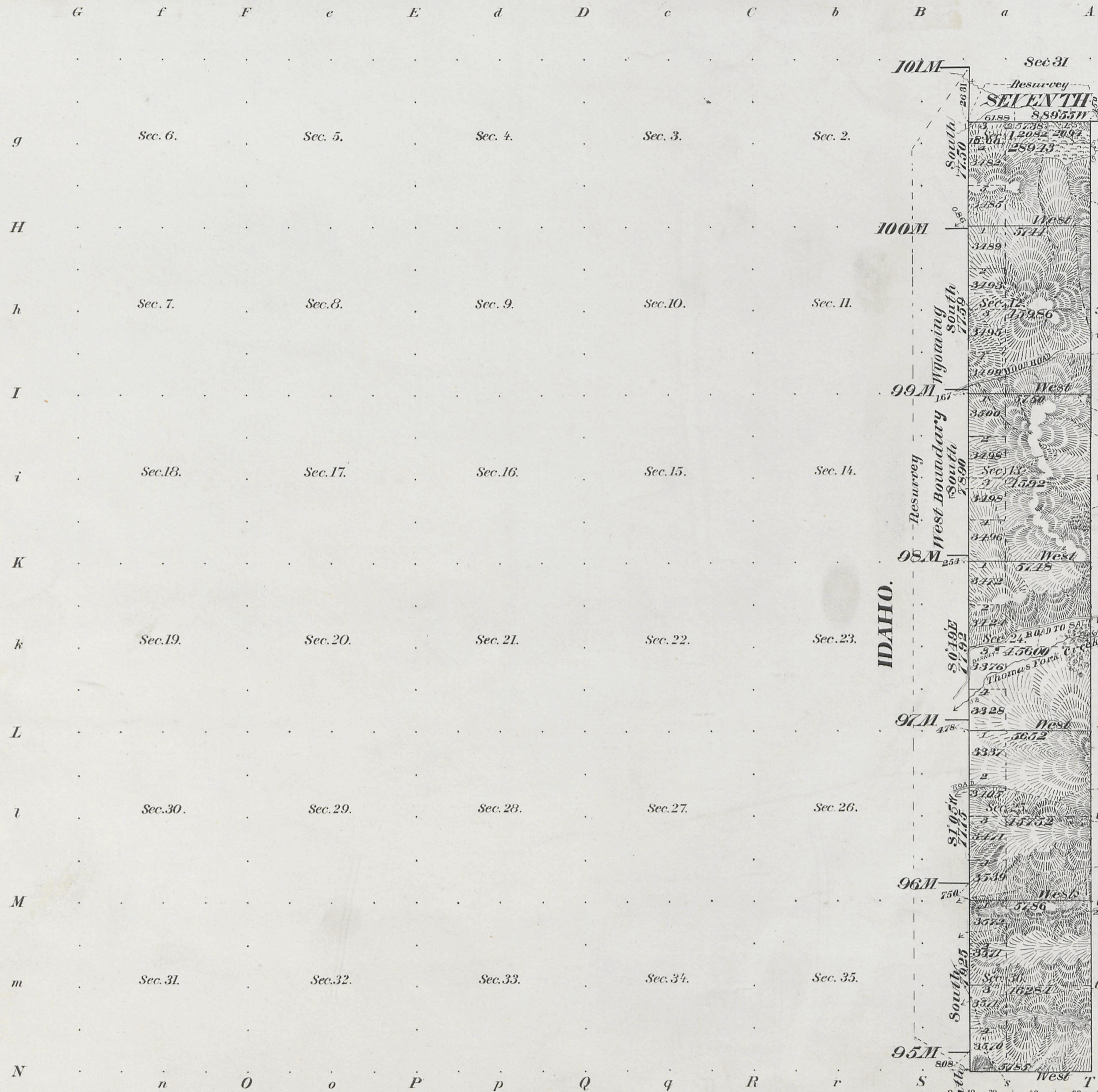
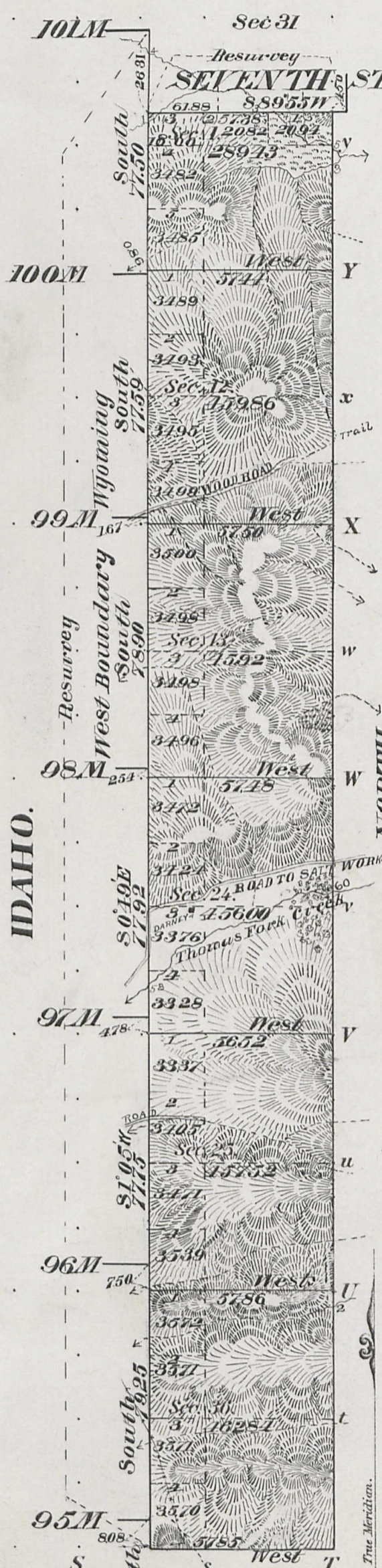


Table titled 'Meanders of' with columns: Posts, Courses, Ch.² Lk.², Posts, Courses, Ch.² Lk.², Posts, Courses, Ch.² Lk.². The table contains several rows of empty data fields for recording survey meander information.



Total number of Acres 2585.57

Table with 5 columns: Surveys Designated, By Whom Surveyed, Date of Contract, Amount of Survey, and When Surveyed. It lists various surveys and their details.

The above Map of Township N° 28 North of Range N° 120 west of the 6th Principal Meridian... is strictly conformable to the field notes of the survey thereof on file in this Office... Surveyors' Office. Stephens, P. Hangan, Cheyenne Wyo. May 11 1900

Filed OCT 27 1900

Come letter Oct. 24-1900

F.H.A. Subd.

2826

28-120

TOWNSHIP EXTERIORS

Scale: 1 inch = 160 chains.

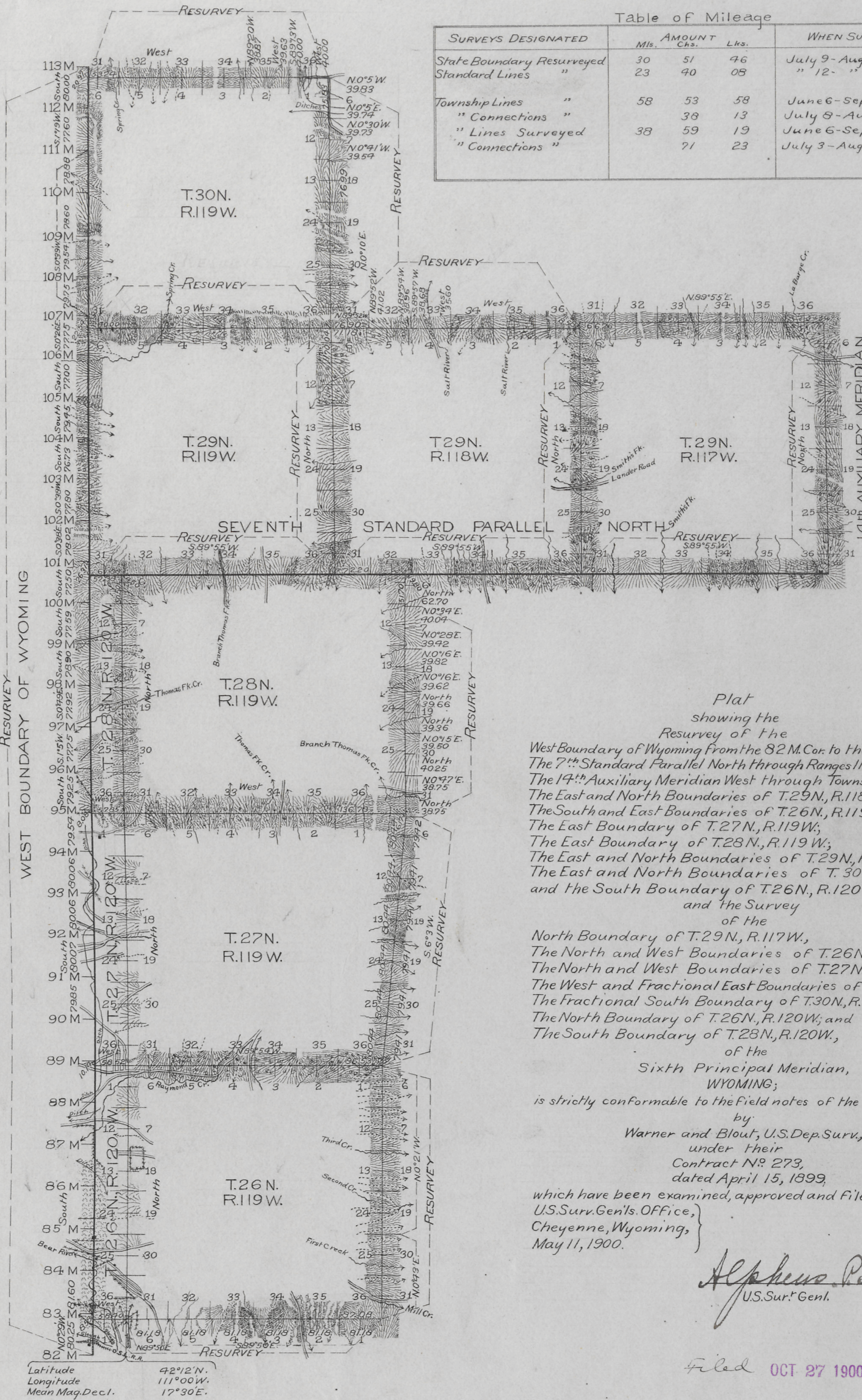


Table of Mileage

SURVEYS DESIGNATED	AMOUNT			WHEN SURVEYED
	Mls.	Chs.	Lks.	
State Boundary Resurveyed	30	51	46	July 9-Aug. 31, 1899.
Standard Lines "	23	40	05	" 12- " 17, "
Township Lines "	58	53	58	June 6-Sept 6, 1899
" Connections "		38	13	July 8-Aug 31, "
" Lines Surveyed "	38	59	19	June 6-Sept 1, "
" Connections "		71	23	July 3-Aug 31, "

Plat
showing the
Resurvey of the
West Boundary of Wyoming from the 82 M. Cor. to the 113 M. Cor.;
The 7th Standard Parallel North through Ranges 117, 118 and 119 W.;
The 14th Auxiliary Meridian West through Township 29 North;
The East and North Boundaries of T. 29 N., R. 118 W.;
The South and East Boundaries of T. 26 N., R. 119 W.;
The East Boundary of T. 27 N., R. 119 W.;
The East Boundary of T. 28 N., R. 119 W.;
The East and North Boundaries of T. 29 N., R. 119 W.;
The East and North Boundaries of T. 30 N., R. 119 W.;
and the South Boundary of T. 26 N., R. 120 W.
of the
North Boundary of T. 29 N., R. 117 W.,
The North and West Boundaries of T. 26 N., R. 119 W.;
The North and West Boundaries of T. 27 N., R. 119 W.;
The West and Fractional East Boundaries of T. 28 N., R. 119 W.;
The Fractional South Boundary of T. 30 N., R. 119 W.;
The North Boundary of T. 26 N., R. 120 W.; and
The South Boundary of T. 26 N., R. 120 W.,
of the
Sixth Principal Meridian,
WYOMING;
is strictly conformable to the field notes of the survey thereof
by
Warner and Blout, U.S. Dep. Surv.,
under their
Contract No. 273,
dated April 15, 1899,
which have been examined, approved and filed in this office.
U.S. Surv. Gen'l's Office,
Cheyenne, Wyoming,
May 11, 1900.

Alpheus P. Hanson
U.S. Sur. Genl.

Filed OCT 27 1900

Comm. letter Oct. 24-1900

Latitude 42° 12' N.
Longitude 111° 00' W.
Mean Mag. Decl. 17° 30' E.

WEST BOUNDARY OF WYOMING

LONGITUDE 34 WEST

From mile-post No. 86 to mile-post No. 114

Scale 2 miles to an inch. Magnetic Variation East



I Hereby Certify, that the above map is a correct representation of so much of the survey of the West Boundary of Wyoming, as extends from mile-post No. 86 to mile-post No. 114, as surveyed and marked by me, under Contract from the Commissioner of the General Land Office, dated May 29th 1873.

A. V. Richart.
U. S. Astronomer and Surveyor.