

T. 37 N., R. 118 W., Sixth Principal Meridian, Wyoming, Field Note Links

Plat Accession Number(s)	Year(s) of Survey	
		Township Subdivision Plats
7533; 7534	1973	https://www.wy.blm.gov/cadastral/countyplats/lincoln/fieldnotes/t37nr118w_gp346fn.pdf
-	1962; 1968	https://www.wy.blm.gov/cadastral/countyplats/lincoln/fieldnotes/t37nr118w_gp262fn.pdf
4899	1916	https://www.wy.blm.gov/cadastral/countyplats/lincoln/fieldnotes/t37nr118w_gp040fn.pdf
4898	1912	https://www.wy.blm.gov/cadastral/countyplats/lincoln/fieldnotes/t37nr118w_gp004fn_9PN.pdf
4898	1912	https://www.wy.blm.gov/cadastral/countyplats/lincoln/fieldnotes/t37nr118w_gp004fn.pdf
		Township Exterior Plats
4964	1928-29	https://www.wy.blm.gov/cadastral/countyplats/lincoln/fieldnotes/t36nr117w_gp105fn_bnd.pdf
4897	1912	https://www.wy.blm.gov/cadastral/countyplats/teton/fieldnotes/retext2938.pdf
4261	1889	https://www.wy.blm.gov/cadastral/countyplats/lincoln/fieldnotes/ext2463.pdf
		State Boundary
-	1990-93	https://www.wy.blm.gov/cadastral/countyplats/lincoln/fieldnotes/t3nr46boisemeridian.pdf
5999	1874	https://www.wy.blm.gov/cadastral/countyplats/lincoln/fieldnotes/wb_mp142-169.pdf

2939D

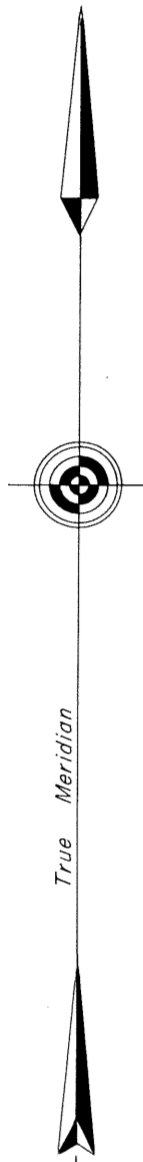
ORIGINAL

SHEET 2 OF 2

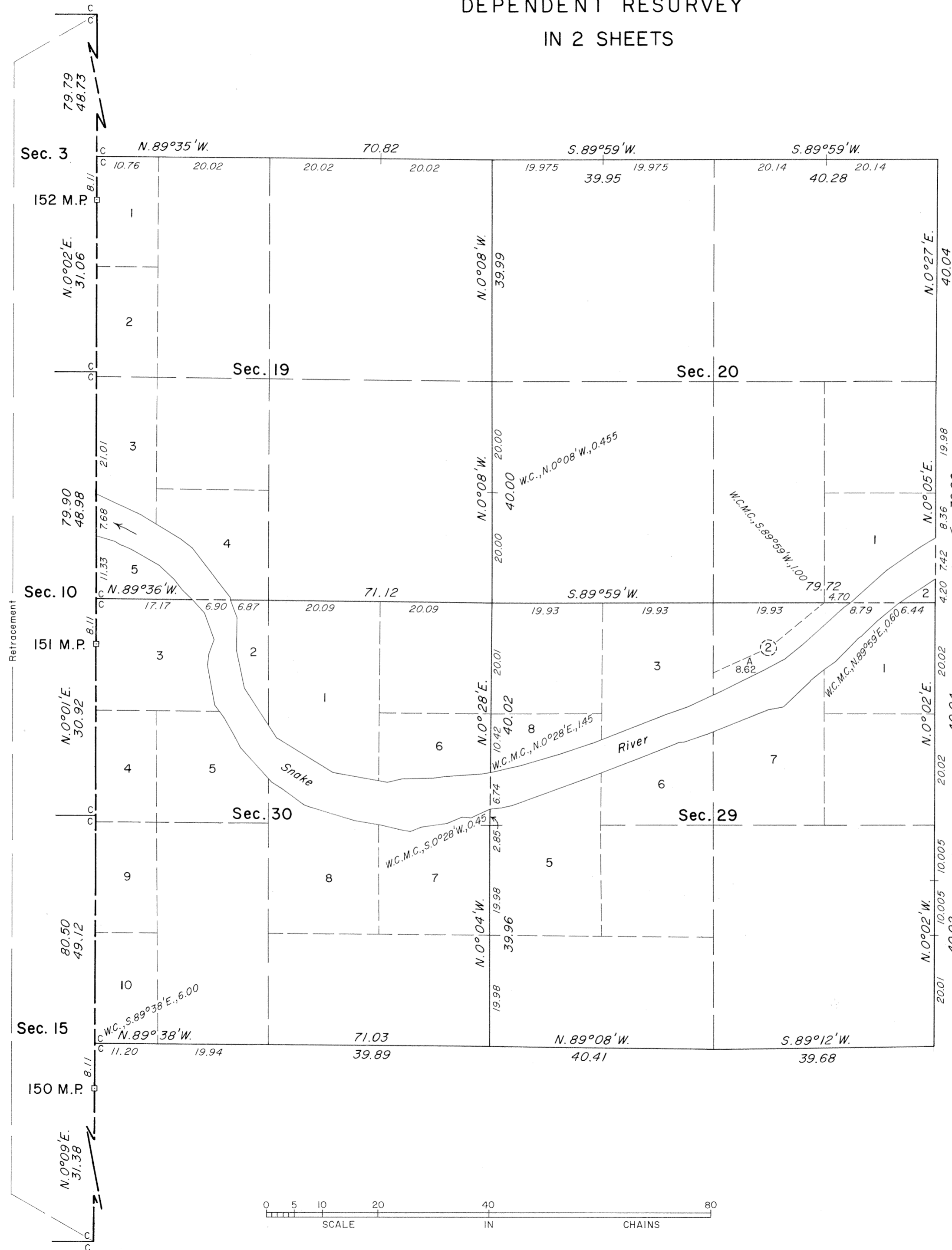
TOWNSHIP 37 NORTH, RANGE 118 WEST, OF THE SIXTH PRINCIPAL MERIDIAN, WYOMING.

DEPENDENT RESURVEY IN 2 SHEETS

WYOMING — IDAHO BOUNDARY LINE



Mean Magnetic Declination
17° E.



Reference should be made to sheet No. 1 for survey information.

UNITED STATES DEPARTMENT OF THE INTERIOR
BUREAU OF LAND MANAGEMENT
Denver, Colorado December 2, 1980

This plat is strictly conformable to the approved field notes, and the survey, having been correctly executed in accordance with the requirements of law and the regulations of this Bureau, is hereby accepted.

For the Director

Chief, Cadastral Survey
Examination and Approval Staff

W.H.B.

7534

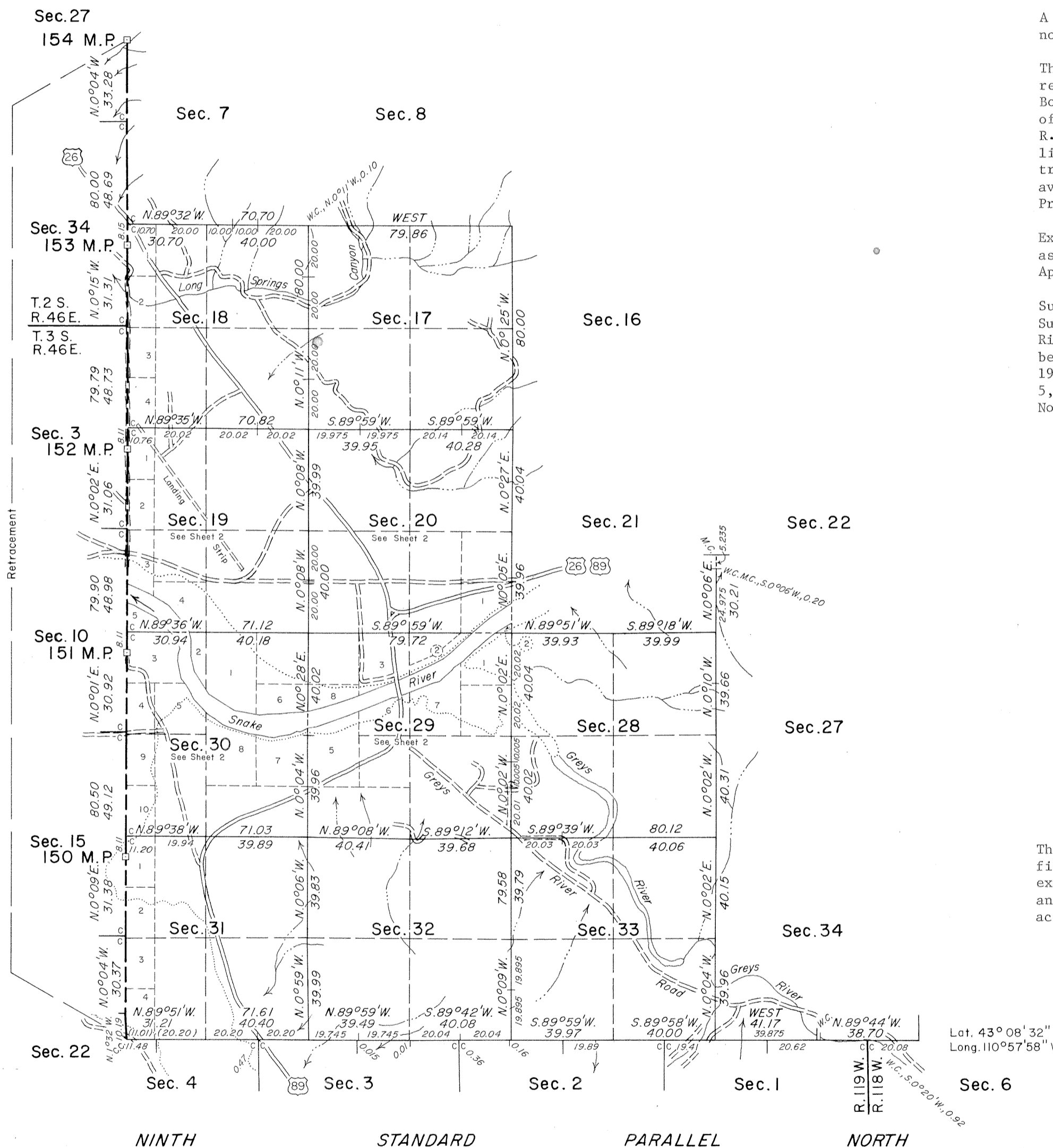
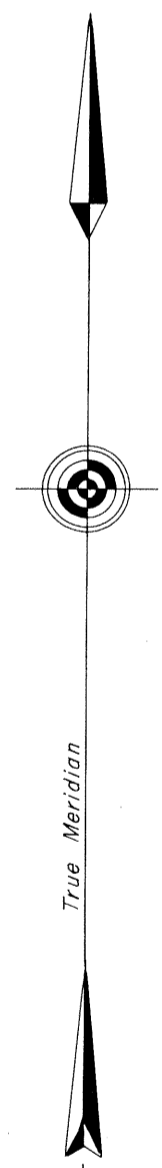
OK-fn

TOWNSHIP 37 NORTH, RANGE 118 WEST, OF THE SIXTH PRINCIPAL MERIDIAN, WYOMING.

DEPENDENT RESURVEY

IN 2 SHEETS

WYOMING — IDAHO BOUNDARY LINE



A history of surveys is contained in the field notes.

This plat, in two sheets, represents the retracement of a portion of the Idaho-Wyoming State Boundary, and the dependent resurvey of a portion of the Ninth Standard Parallel North, through R. 118 W., and a portion of the subdivisional lines, designed to restore the corners in their true original locations according to the best available evidence, T. 37 N., R. 118 W., Sixth Principal Meridian, Wyoming.

Except as shown hereon, the lottings and areas are as shown on the plats approved August 9, 1913, April 11, 1917, and July 12, 1918.

Survey executed by Jerry L. Messick, Supervisory Surveying Technician, under the supervision of Richard L. Oakes, Supervisory Cadastral Surveyor, beginning July 17, 1973, and completed October 3, 1973, pursuant to Special Instructions dated July 5, 1972, which provided for the survey under Group No. 346, Wyoming.

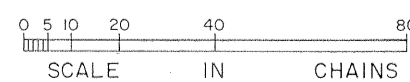
UNITED STATES DEPARTMENT OF THE INTERIOR
BUREAU OF LAND MANAGEMENT
Denver, Colorado December 2, 1980

This plat is strictly conformable to the approved field notes, and the survey, having been correctly executed in accordance with the requirements of law and the regulations of this Bureau, is hereby accepted.

For the Director

Chief, Cadastral Survey
Examination and Approval Staff

LEGEND
..... = APPROX. HIGH
WATER LINE PALISADES RESERVOIR



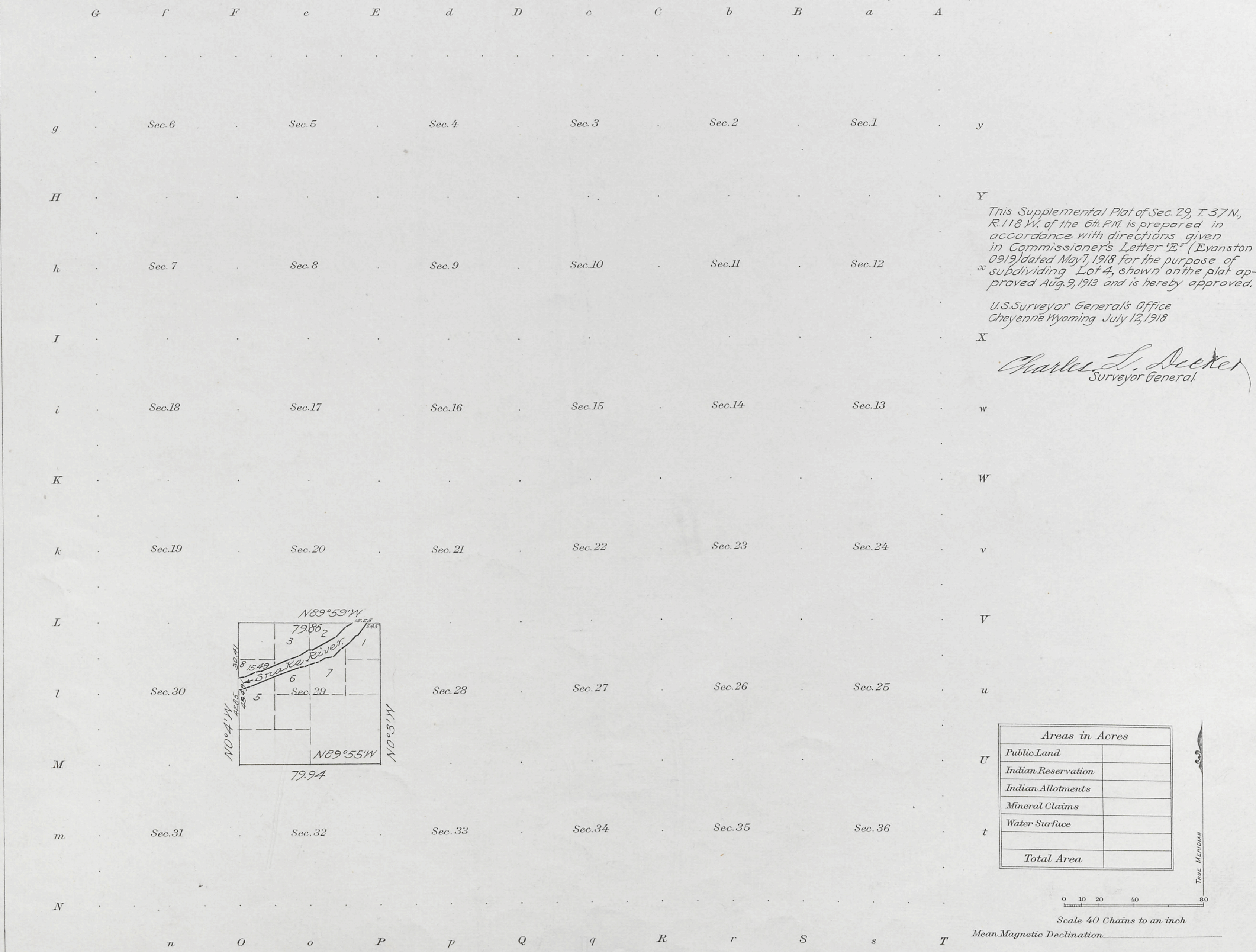
Lot. $43^{\circ} 08' 32'' N.$
Long. $110^{\circ} 57' 58'' W.$

OK 7/11

Office accession
no.
4900

(4-675a)

Supplemental Plat No. 1
Township N^o 37 North Range N^o 118 West of the Sixth Principal Meridian, Wyoming



This Supplemental Plat of Sec. 29, T. 37 N., R. 118 W. of the 6th PM. is prepared in accordance with directions given in Commissioner's Letter 'E' (Evanston 0919) dated May 7, 1918 for the purpose of subdividing Lot 4, shown on the plat approved Aug. 9, 1913 and is hereby approved.

U.S. Surveyor General's Office
Cheyenne Wyoming July 12, 1918

Charles L. Becker
Surveyor General

Areas in Acres	
Public Land	
Indian Reservation	
Indian Allotments	
Mineral Claims	
Water Surface	
Total Area	

Scale 40 Chains to an inch

Mean Magnetic Declination

Surveys Designated	By Whom Surveyed	Contract		Amount of Surveys			When Surveyed	
		No.	Date	Mls.	chs.	lks.	Begun	Completed

The above map of Township No. _____ Range No. _____ of the _____ Meridian is strictly conformable to the field notes of the survey thereof on file in this office, which have been examined and approved
U. S. Surveyor General's Office.
Surveyor General.

2939-B

Accepted by Commr.
Oct. 5, 1918
Francis Evanston
Oct. 11, 1918

37-118

Township No. 37 North, Range No. 118 West of the Sixth Principal Meridian, Wyoming

Survey Accepted July 11, 1917
G.L.O.

G f F e E d D c C b B a A



UNSURVEYED

Surveyed by Jaeckel and Voigt 1912
Group 4

Areas in Acres	
Public Land	640
Indian Reservation	
Indian Allotments	
Mineral Claims	
Water Surface	
Total Area	

Scale 40 Chains to an inch
Mean Magnetic Declination

Surveys Designated	By Whom Surveyed	Group			When Surveyed			
		No.	Date	Mls.	chs.	fcs.	Begun	Completed
Subdivisions	A. D. Davis	40	April 6, 1916	1	79	85	August 3, 1916	Sept. 1, 1916

The above map of Township No. 37 North Range No. 118 West of the Sixth Principal Meridian Wyoming is strictly conformable to the field notes of the survey thereof on file in this office, which have been examined and approved.

U. S. Surveyor General's Office.
Cheyenne Wyoming April 14, 1917

Charles L. Becker
Surveyor General.

2939-A

Trans. to Eraunston
Nov. 18, 1917

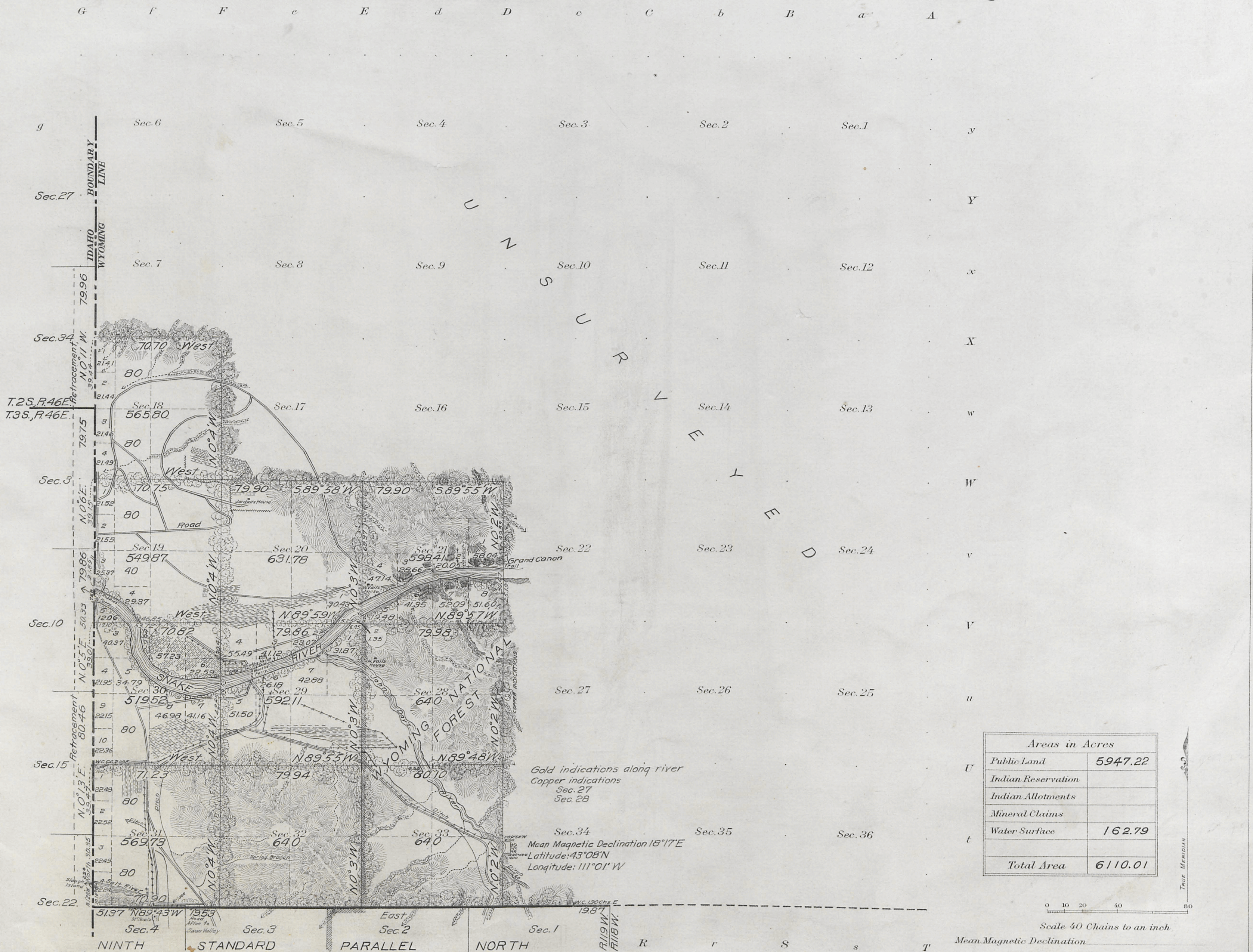
37-118

0705

4698

(4-675a)

Fractional Township N° 37 North, Range N° 118 West of the Sixth Principal Meridian, Wyoming



Areas in Acres	
Public Land	5947.22
Indian Reservation	
Indian Allotments	
Mineral Claims	
Water Surface	162.79
Total Area	6110.01

Scale 40 Chains to an inch
 Mean Magnetic Declination

Surveys Designated	By Whom Surveyed	Group No.	Date	Amount of Surveys			When Surveyed	
				Mls.	chs.	lks.	Begun	Completed
Subdivisions	Jaechel & Voigt	4	May 3, 1911	19	43	18	August 11, 1912	September 7, 1912
Connections	"	"	"	1	77	07	August 27, 1912	September 7, 1912
Resurvey Standard Parallel	"	"	"	3	30	90	July 25, 1912	August 7, 1912
Meanders	"	"	"	6	73	40	August 30, 1912	September 5, 1912
Retracement W. Bdy. of State	"	"	"	4	40	56	August 27, 1912	September 7, 1912
West Boundary of State	A. V. Richards	610	May 29, 1873				June 30, 1874	July 10, 1874

The above map of ^{Fractional} Township No. 37 North, Range No. 118 West of the Sixth Principal Meridian, Wyoming is strictly conformable to the field notes of the survey thereof on file in this office, which have been examined and approved

U. S. Surveyor General's Office.
 Cheyenne, Wyoming, August 9, 1913

Stephen P. Johnson
 Surveyor General.

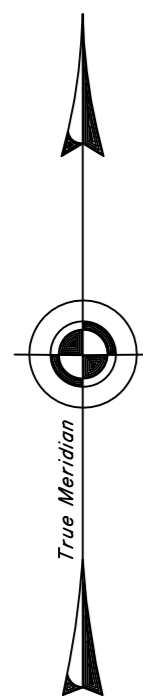
Accepted by the Asst. Commissioners in letter "E", March 5, 1914.

37-118

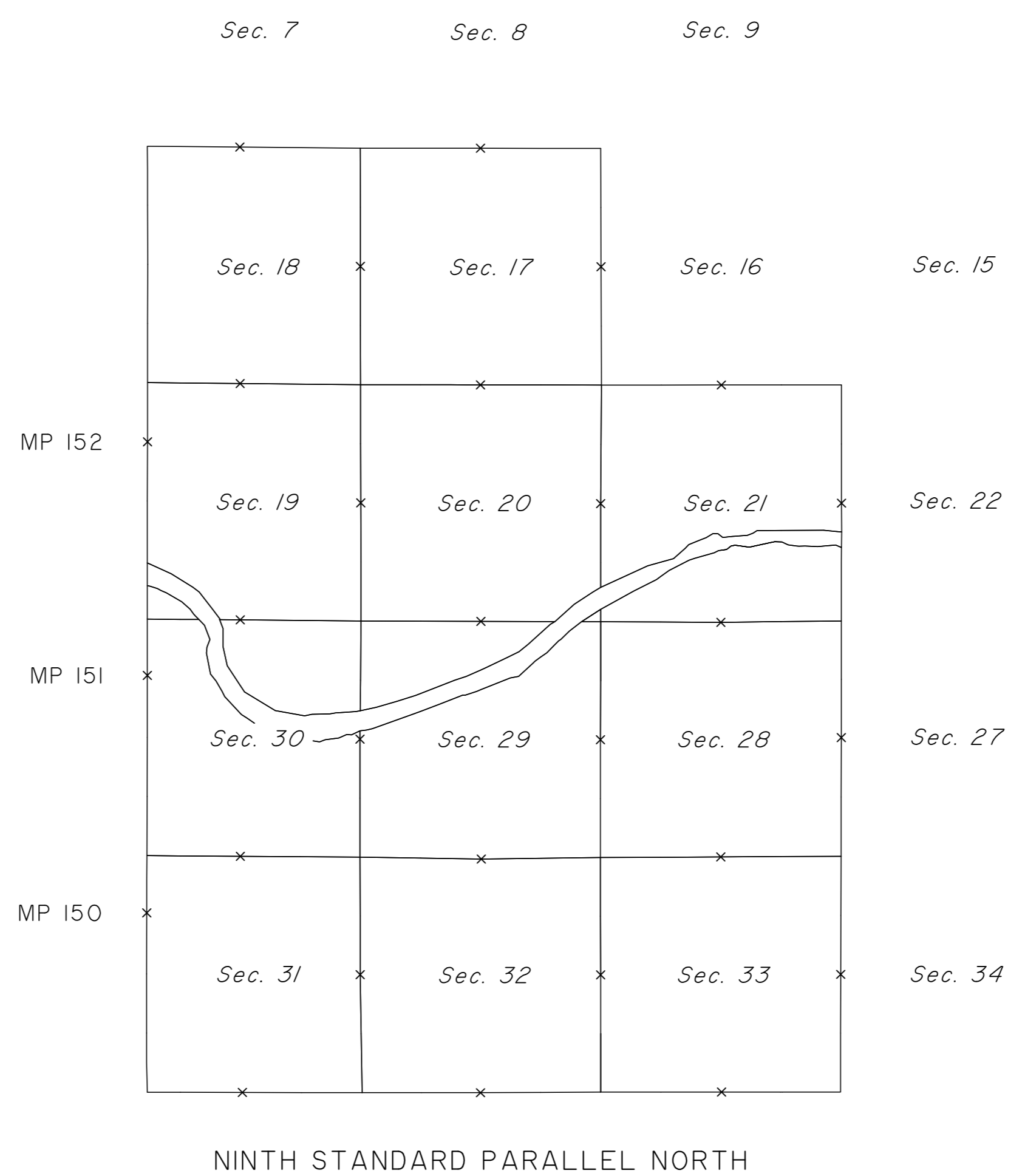
2939

TOWNSHIP 37 NORTH, RANGE 118 WEST OF THE SIXTH PRINCIPAL MERIDIAN, WYOMING.

INDEX TO CORNER REMONUMENTATION WITHOUT SURVEY



IDAHO



NOT TO SCALE

LEGEND

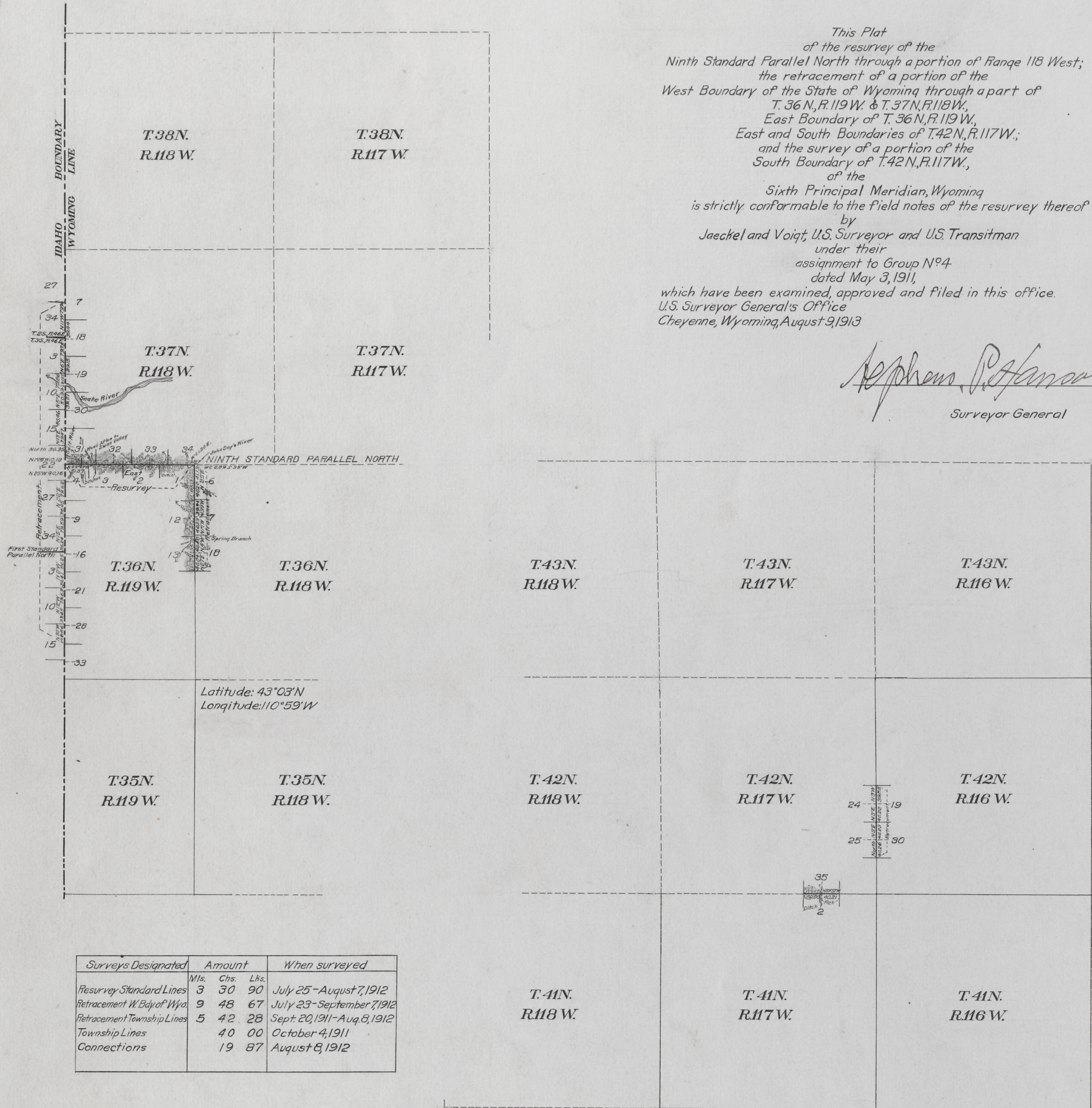
Remonumented Corner as Indicated

TOWNSHIP EXTERIORS

Scale: 1 inch to 160 chains

This Plat
of the resurvey of the
Ninth Standard Parallel North through a portion of Range 118 West;
the retracement of a portion of the
West Boundary of the State of Wyoming through a part of
T. 36 N., R. 119 W. & T. 37 N., R. 119 W.,
East Boundary of T. 36 N., R. 119 W.,
East and South Boundaries of T. 42 N., R. 117 W.;
and the survey of a portion of the
South Boundary of T. 42 N., R. 117 W.,
of the
Sixth Principal Meridian, Wyoming
is strictly conformable to the field notes of the resurvey thereof
by
Jaeckel and Voigt, U.S. Surveyor and U.S. Transitman
under their
assignment to Group N^o 4
dated May 3, 1911,
which have been examined, approved and filed in this office.
U.S. Surveyor General's Office
Cheyenne, Wyoming, August 9, 1912

Stephen P. Johnson
Surveyor General



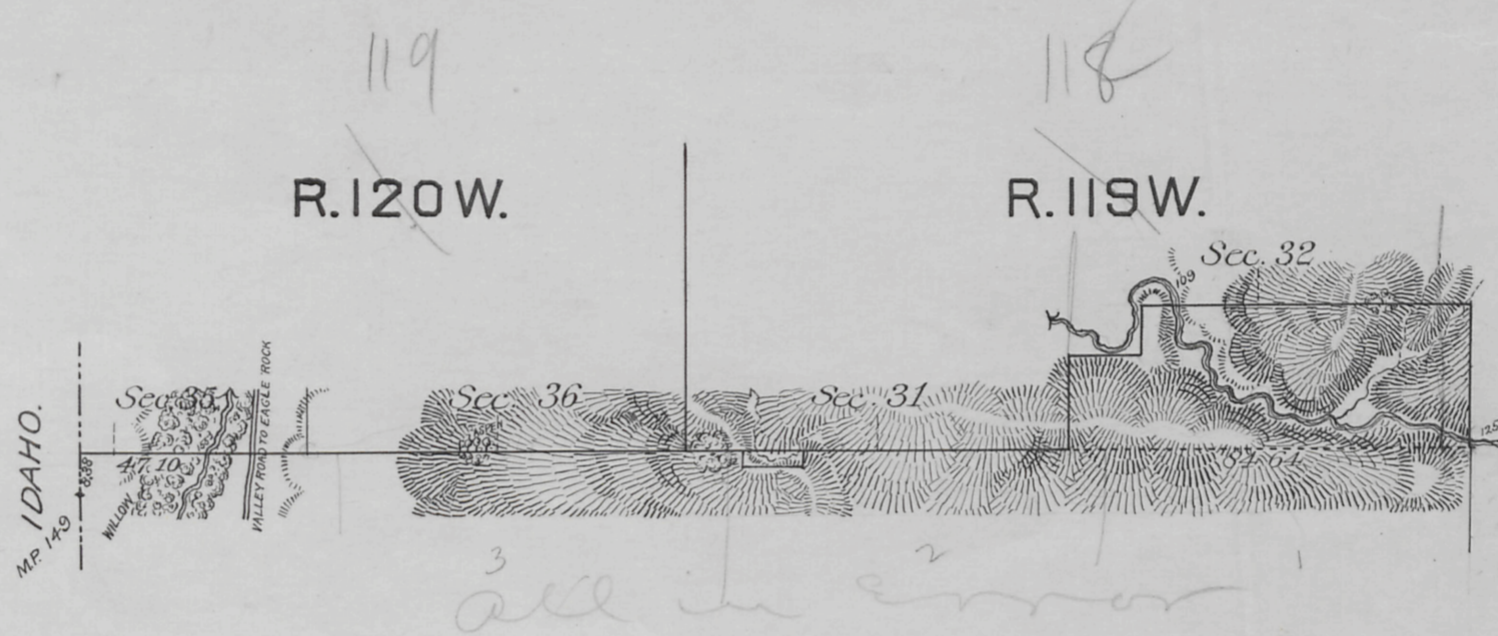
Surveys Designated	Amount			When surveyed
	Mis.	Chs.	Lks.	
Resurvey Standard Lines	3	30	90	July 25 - August 7, 1912
Retracement W. Bdy of Wyo.	9	48	67	July 23 - September 7, 1912
Retracement Township Lines	5	42	28	Sept. 20, 1911 - Aug. 8, 1912
Township Lines		40	00	October 4, 1911
Connections		19	87	August 6, 1912

Accepted by the Ass. Commissioner, in letter March 5, 1914.

4261

9TH STANDARD PARALLEL NORTH.

In Township 37 North, Ranges 119 and 120 West of the 6th P.M.
Scale 40 Chs to 1 inch. Mag. Var. 17° 38' East.



*C.C. should be 2000 chs + 2 of 1/4 cor.
on S being sec 34 - T37 N., R. 119 W.
C.C. should be 2000 chs E. of 1/4 cor.
on S being sec 34 - 37 - 119 W.
Based on C.C. S. by 34, 37-119
as arranged by Capt. Wm. 687 E
of 1/4 cor. 2000 chs = 1360
2007*

*This plat void
See Off. Dist. May 3, 1911
p. 4 - Page 8
C. A. [Signature]
Mar. 5 - 1908*

All at intermediate rates.

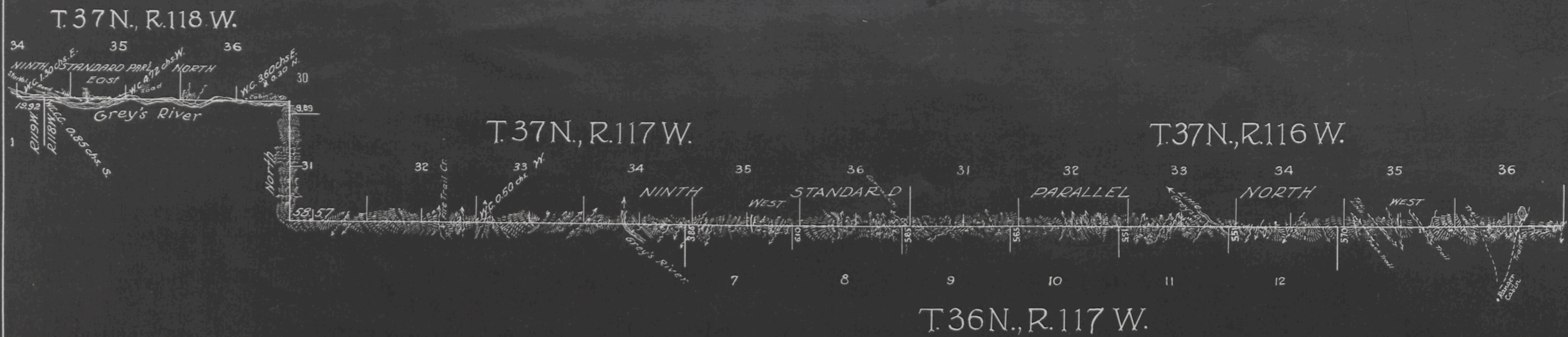
Surveys Designated	By Whom Surveyed	Date of Contract	Amount of Surveys mcs. chs. fcs.	When Surveyed
9 th Stand. P.N.	Frank H. Jones	June 19 th 1889	3 51 74	Sep. 22 & 23 - 1889
Connections	" " "	" " "	8 38	" " "

The above diagram of the 9th Standard Parallel North in Township 37 North, Ranges 119 and 120 West of the 6th Principal Meridian, Wyoming Territory, is strictly conformable to the field notes of survey thereof on file in this office, which have been examined and approved.
U.S. Surveyor General's Office,
Cheyenne, Wyoming,
Oct. 15th 1890

Wm A. Richards
U.S. Surveyor General

SIXTH PRINCIPAL MERIDIAN, WYOMING TOWNSHIP EXTERIORS.

Scale: 1 in. = 60 Chs.



Surveys Designated	Amount <small>(Mls. chs. taken)</small>	When surveyed.
Standard Lines	14-18-57	June 15, 1928 - Sept 25, 1929
Township Lines	1-9-89	July 14, 1928

Office of U.S. Supervisor of Surveys
Denver, Colorado, Jan. 27, 1931

This plat of the Ninth Standard Parallel North thru R. 116 and 117 W., and thru part of R. 118 W., and part of the W. 1/2 T. 37 N., R. 117 W. of the Sixth Principal Meridian, Wyoming, is strictly conformable to the field notes of the survey thereof by Emil Voigt, U.S.C.E. under Special Instructions GROUP 105, dated March 26, 1928, and the plat is hereby approved.

Wm. H. Cannon
U.S. Supervisor of Surveys

DEPARTMENT OF THE INTERIOR,
GENERAL LAND OFFICE
Washington, D.C., February 27, 1931

The survey represented by this plat having been correctly executed in accordance with the requirements of law and the regulations of this office, is hereby accepted.

Wm. C. Stowell
Assistant Commissioner

1/50

