

T. 30 N., R. 79 W., Sixth Principal Meridian, Wyoming, Field Note Links

Plat Accession Number(s)	Year(s) of Survey	
		Township Subdivision Plats
8792	2018-19	https://www.wy.blm.gov/cadastral/countyplats/natrona/fieldnotes/t30nr79w_gp1007fn.pdf
7258	1970-71	https://www.wy.blm.gov/cadastral/countyplats/natrona/fieldnotes/t30nr79w_gp335fn.pdf
3044	1883	https://www.wy.blm.gov/cadastral/countyplats/natrona/fieldnotes/t30nr79w_c216fn.pdf
		Township Exterior Plats
3165	1883	https://www.wy.blm.gov/cadastral/countyplats/converse/fieldnotes/ext3165.pdf

TOWNSHIP 30 NORTH, RANGE 79 WEST, OF THE SIXTH PRINCIPAL MERIDIAN, WYOMING.

DEPENDENT RESURVEY AND SURVEY

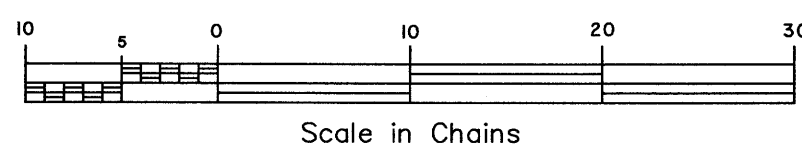
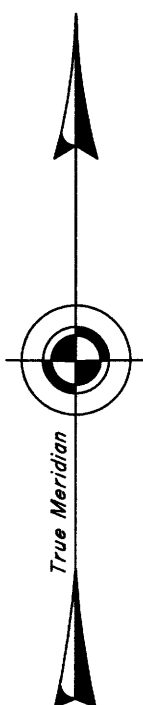
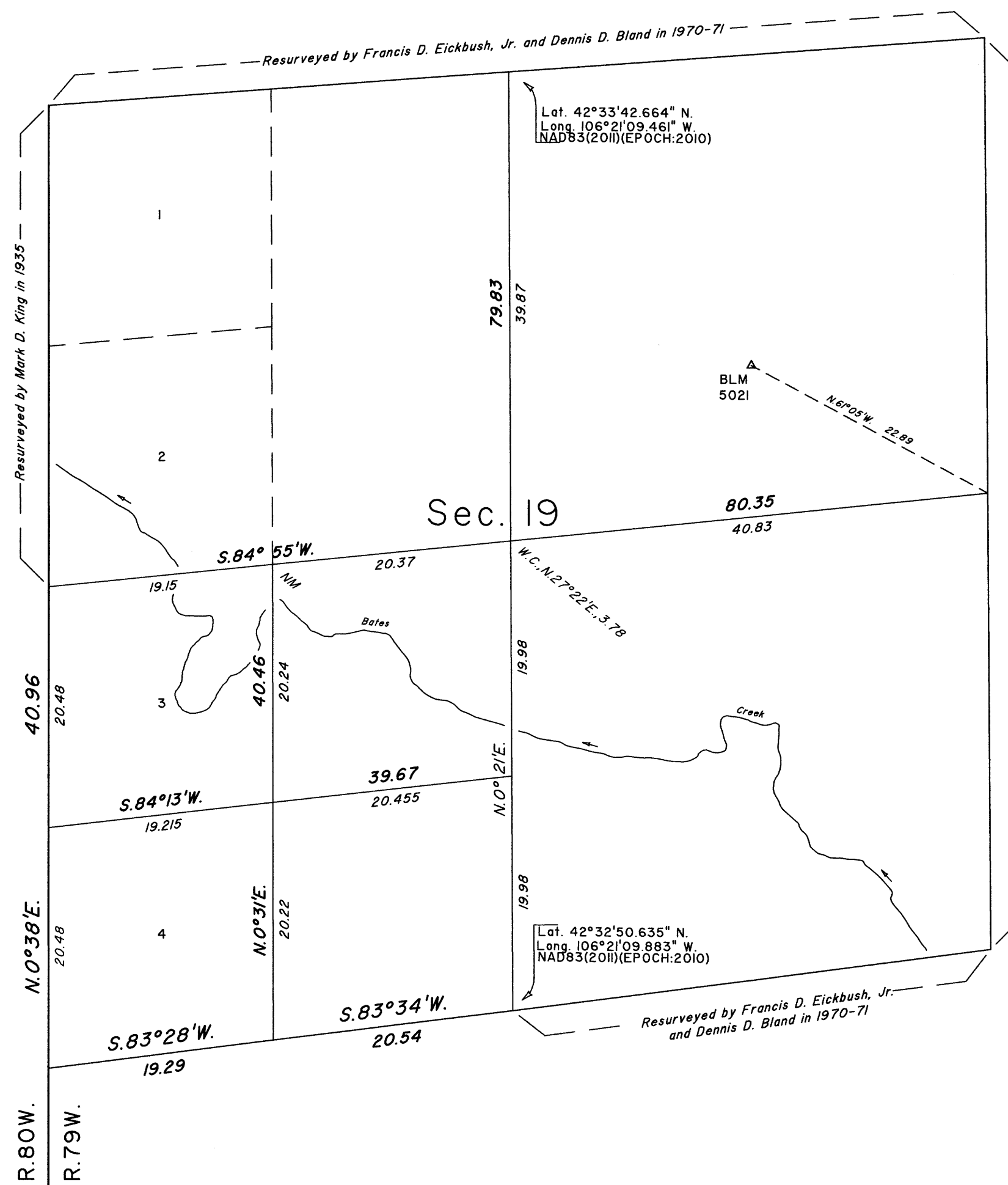
A history of surveys is contained in the field notes.

This plat represents the dependent resurvey of a portion of the west boundary and a portion of the subdivisional lines, designed to restore the corners in their true original locations according to the best available evidence, and the survey of the subdivision of section 19, T. 30 N., R. 79 W., Sixth Principal Meridian, Wyoming.

The lotting and areas are as shown on the plat approved February 8, 1884.

Survey executed by Eric J. Bearden and James E. Jacob, Cadastral Surveyors, beginning August 13, 2018, and completed May 6, 2019, pursuant to special instructions and assignment instructions dated August 10, 2018, for Group No. 1007, Wyoming.

Note: NM indicates corner not monumented.



UNITED STATES DEPARTMENT OF THE INTERIOR
BUREAU OF LAND MANAGEMENT

Cheyenne, Wyoming August 26, 2020

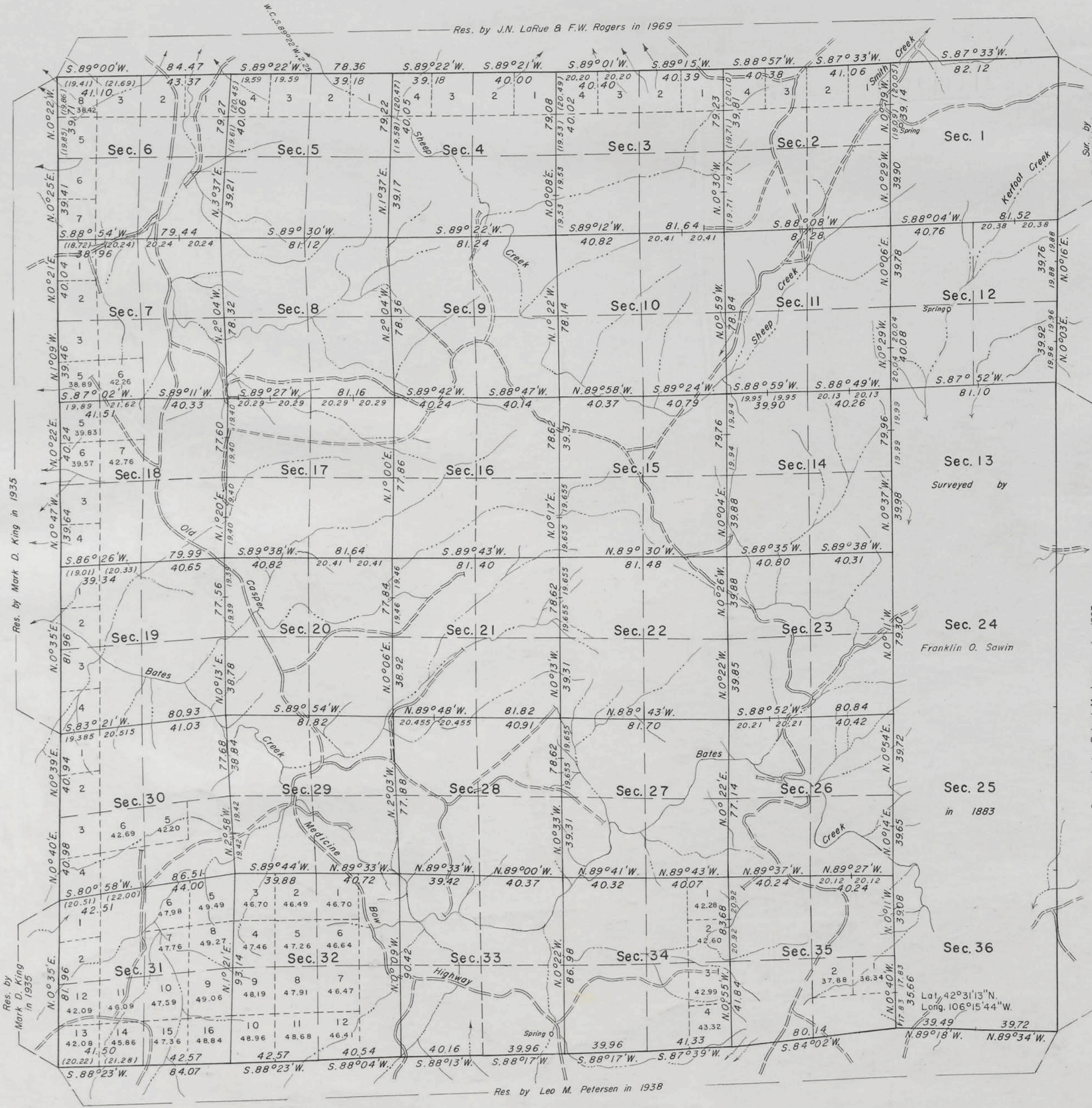
This plat is strictly conformable to the approved field notes, and the survey, having been correctly executed in accordance with the requirements of law and the regulations of this Bureau, is hereby accepted.

For the Director

Sonja S. Sparks

Chief Cadastral Surveyor for Wyoming

TOWNSHIP 30 NORTH, RANGE 79 WEST OF THE SIXTH PRINCIPAL MERIDIAN, WYOMING. DEPENDENT RESURVEY



The history of surveys is contained in the field notes.

This plat represents the dependent resurvey of a portion of the east and west boundaries, and portions of the subdivisional lines of Township 30 North, Range 79 West, Sixth Principal Meridian, Wyoming, designed to restore the corners in their true original locations according to the best available evidence.

Except as indicated hereon, the lottings and areas are as shown on the plat approved February 8, 1884.

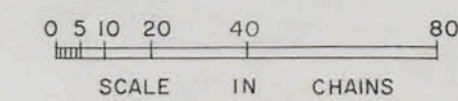
This resurvey was executed by Francis D. Eickbush, Jr. and Dennis D. Bland, Supervisory Cadastral Surveyors, beginning August 24, 1970 and completed June 15, 1971, pursuant to Special Instructions dated August 18, 1970 for Group No. 335, Wyoming.

UNITED STATES DEPARTMENT OF THE INTERIOR
BUREAU OF LAND MANAGEMENT
Washington, D.C. January 9, 1974

This plat is strictly conformable to the approved field notes, and the survey, having been correctly executed in accordance with the requirements of law and the regulations of this Bureau, is hereby accepted.

For the Director

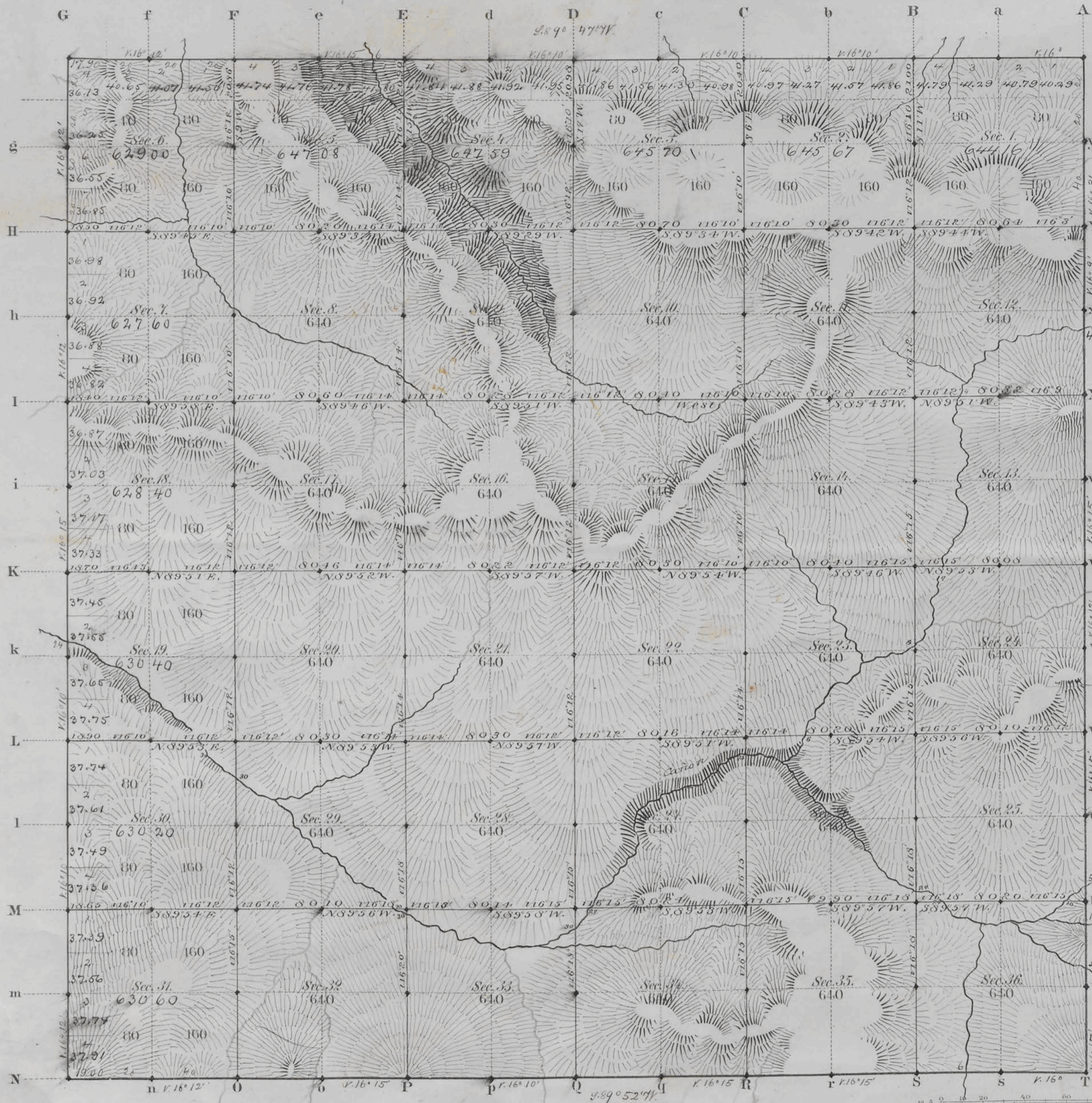
Chief, Division of Cadastral Survey



Area Resurveyed 20,003.11 Acres

3044

TOWNSHIP N^o 30 NORTH RANGE N^o 79 WEST of the 6th Principal MERIDIAN.



Total number of Acres, 23,006.40

Surveys Designated	By Whom Surveyed	Date of Contract	Amount of Surveys M ^{rs} C ^{ts} L ^{ks}	When Surveyed	Magnetic Declination
Township lines	Quinn & Lavin	July 9, 1883	23 76 20	July 31, and Aug 7, 9, 10, 1883	16° 10' East
Subdivisions	"	"	60 07 43	September 23 "	16° 12' 4 "
Connections					

The above Map of Township N^o 30 North Range N^o 79 West of the Sixth Principal Meridian Wyoming Territory is strictly conformable to the field notes of the survey thereof on file in this Office, which have been examined and approved.

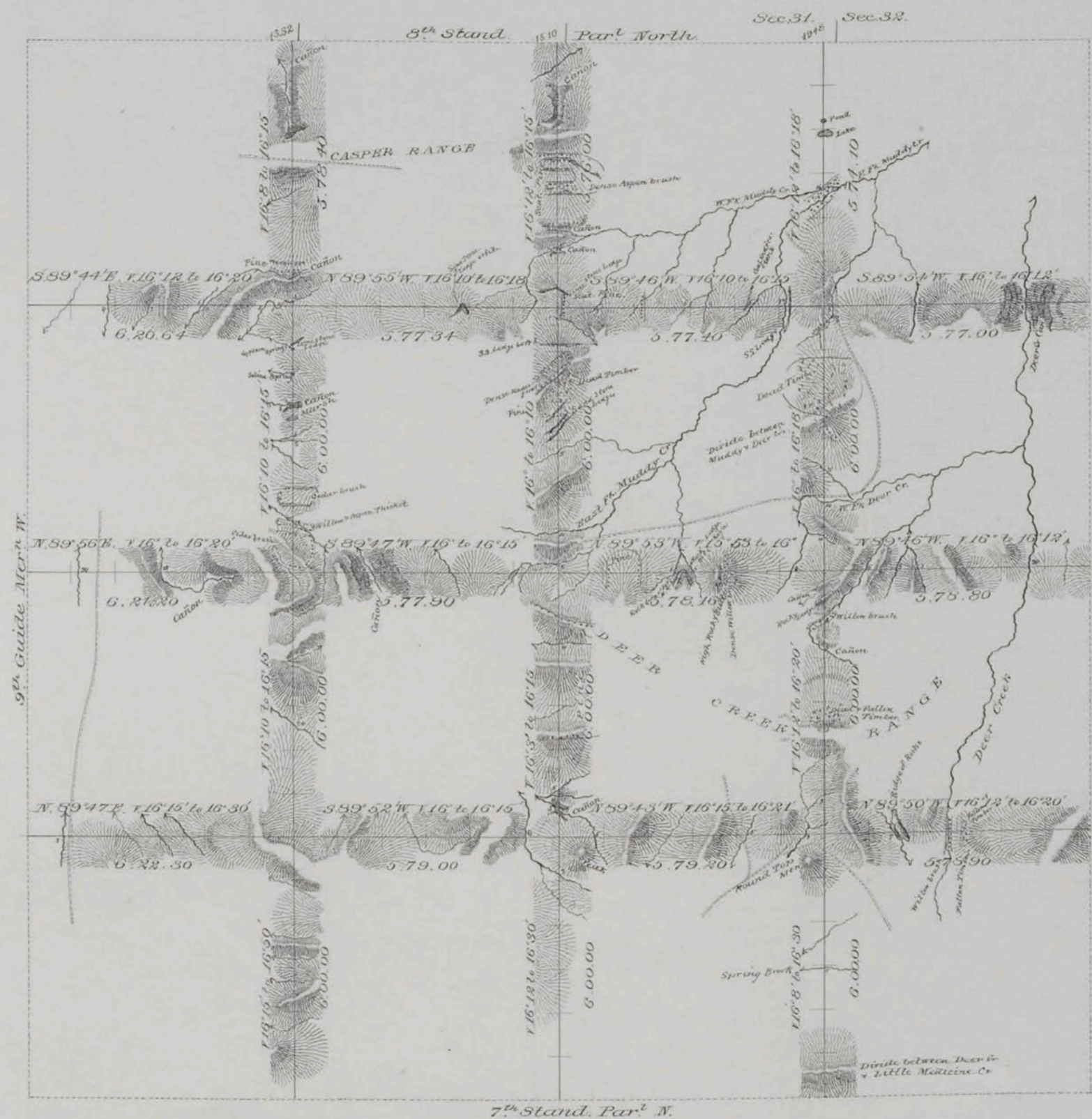
Surveyor General's Office,

Cheyenne Wyoming
February 8th 1884

Elias C. Dwyer
Sur. Gen.

EXTERIOR LINES.

Scale 3 miles to 1 inch Magnetic Variation, E.



T. 32N.

T. 31N.

T. 30N.

T. 29N.

R. 80W.

R. 79W.

R. 78W.

R. 77W.

Surveys Designated	By Whom Surveyed	Date of Contract	Amount of Sections	When Surveyed
Exterior lines	Jones & Sawin	July 9 th 1883	144 36 34	July 19 th Aug 16 th 1883
Conductions	" "	" "	47 90	" " "

I hereby certify that the above diagram of the Exterior lines of Tps 29, 30, 31 & 32 N, R's 77, 78, 79, & 80 W, of the 6th P.M., Wyoming Territory is strictly conformable to the field notes of the survey thereof on file in this office which have been examined and approved
 Surveyor General's Office,
 Cheyenne, Wyoming February 8th 1884

Edw. C. Davis Sur. Gen.