

T. 30 N., R. 80 W., Sixth Principal Meridian, Wyoming, Field Note Links

| Plat Accession Number(s) | Year(s) of Survey | |
|----------------------------|-------------------|---|
| Township Subdivision Plats | | |
| 8793 | 2018-19 | https://www.wy.blm.gov/cadastral/countyplats/natrona/fieldnotes/t30nr80w_gp1007fn.pdf |
| 6150 | 1935 | https://www.wy.blm.gov/cadastral/countyplats/natrona/fieldnotes/t30nr80w_gp137fn.pdf |
| 3056 | 1883 | https://www.wy.blm.gov/cadastral/countyplats/natrona/fieldnotes/t30nr80w_c216fn.pdf |
| Township Exterior Plats | | |
| 4942 | 1914-15 | https://www.wy.blm.gov/cadastral/countyplats/converse/fieldnotes/ext2978a.pdf |
| 4347 | 1891 | https://www.wy.blm.gov/cadastral/countyplats/converse/fieldnotes/ext2509.pdf |
| 3165 | 1883 | https://www.wy.blm.gov/cadastral/countyplats/converse/fieldnotes/ext3165.pdf |
| 695 | 1882; 1891 | https://www.wy.blm.gov/cadastral/countyplats/carbon/fieldnotes/retext0561.pdf |
| 695 | 1880 | https://www.wy.blm.gov/cadastral/countyplats/carbon/fieldnotes/ext0695.pdf |

TOWNSHIP 30 NORTH, RANGE 80 WEST, OF THE SIXTH PRINCIPAL MERIDIAN, WYOMING.

DEPENDENT RESURVEY AND SURVEY

A history of surveys is contained in the field notes.

This plat represents the dependent resurvey of a portion of the subdivisional lines, designed to restore the corners in their true original locations according to the best available evidence, and the survey of the subdivision of section 24, T. 30 N., R. 80 W., Sixth Principal Meridian, Wyoming.

The lotting and areas are as shown on the plat approved February 8, 1884.

Survey executed by Eric J. Bearden and James E. Jacob, Cadastral Surveyors, beginning August 13, 2018, and completed May 6, 2019, pursuant to special instructions and assignment instructions dated August 10, 2018, for Group No. 1007, Wyoming.

Note: NM indicates corner not monumented.

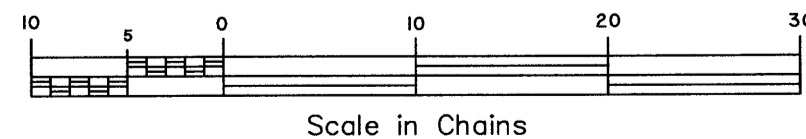
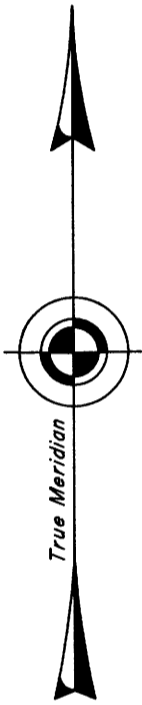
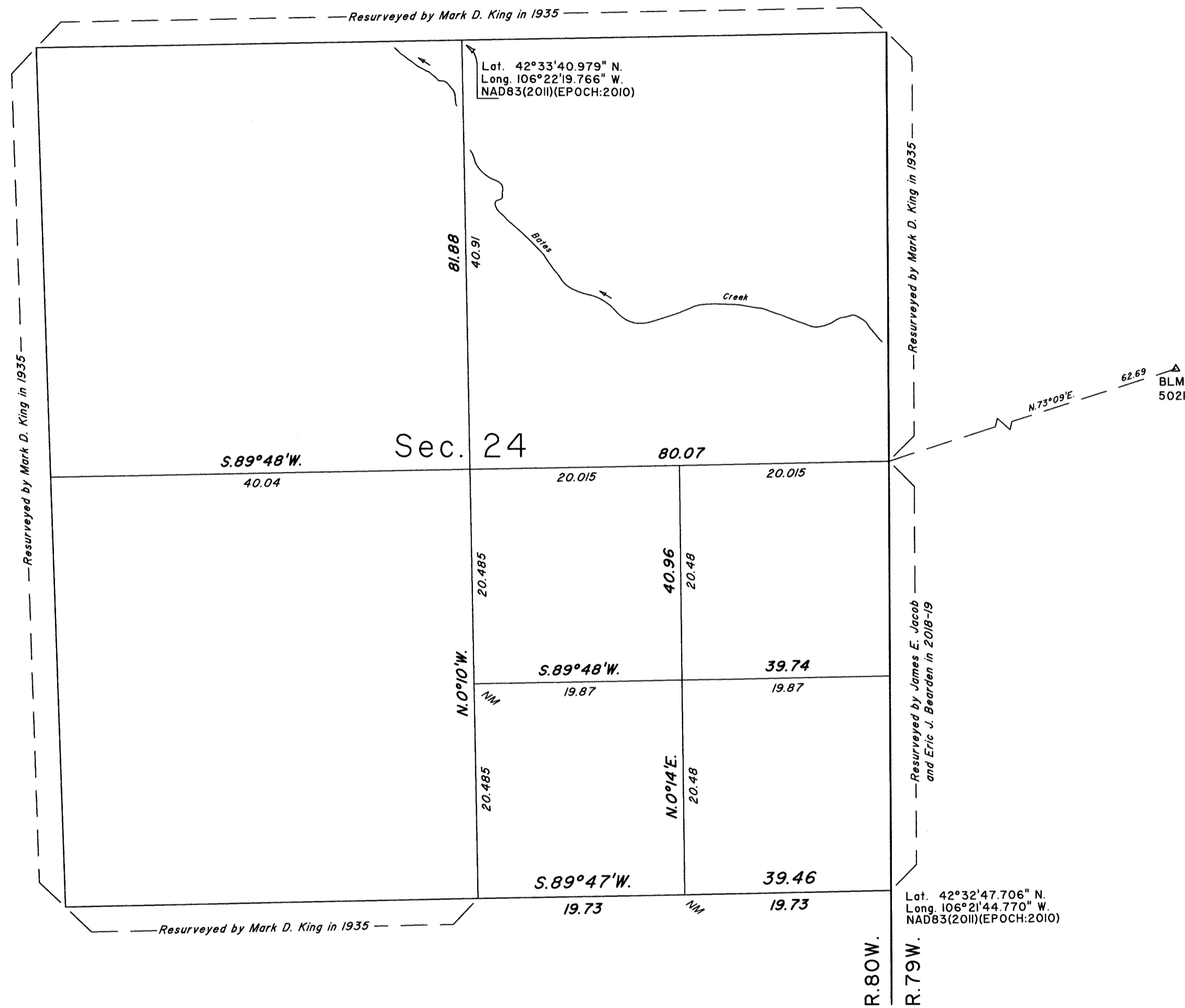
UNITED STATES DEPARTMENT OF THE INTERIOR
BUREAU OF LAND MANAGEMENT

Cheyenne, Wyoming August 26, 2020

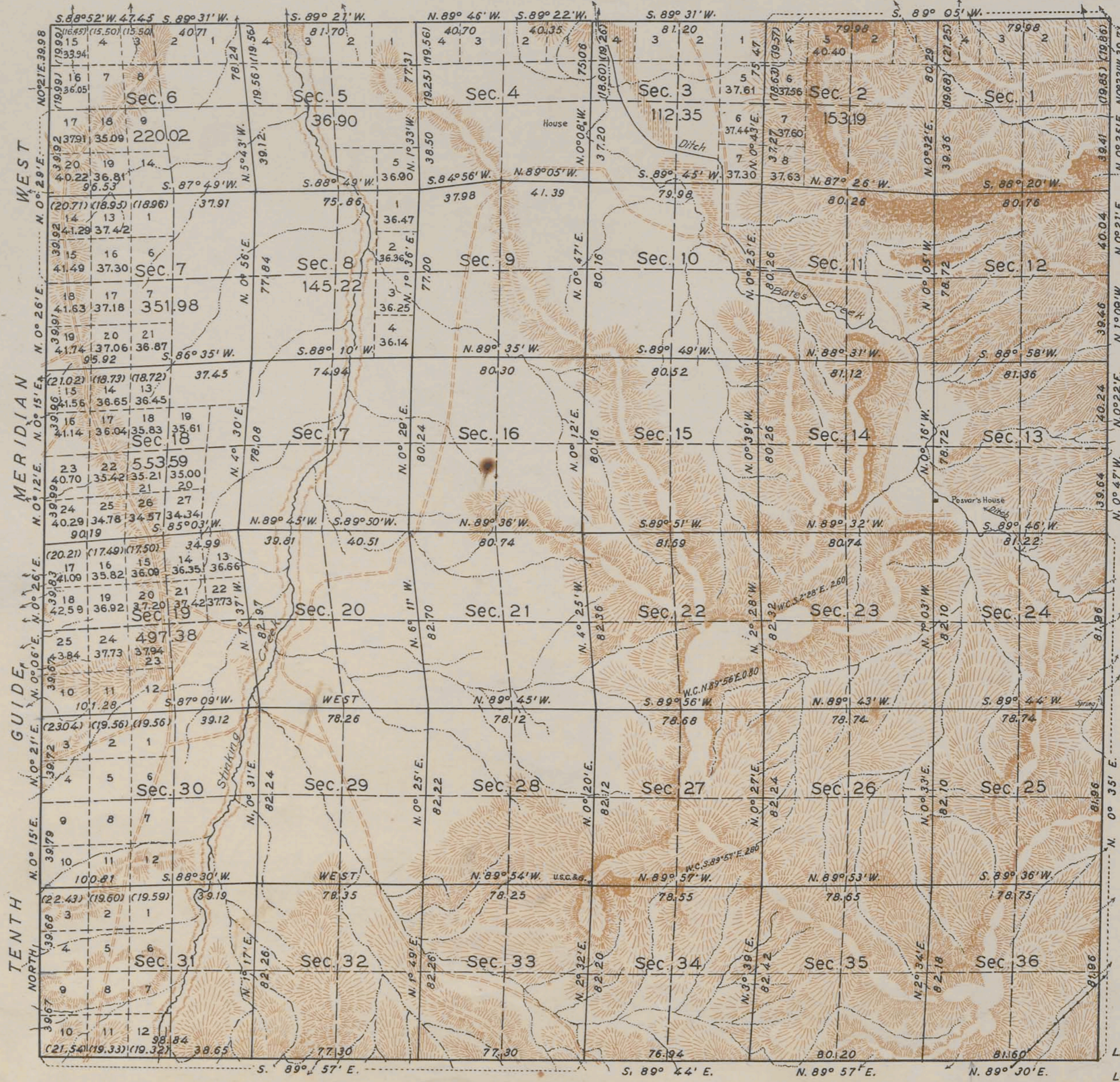
This plat is strictly conformable to the approved field notes, and the survey, having been correctly executed in accordance with the requirements of law and the regulations of this Bureau, is hereby accepted.

For the Director

[Signature]
Sonja S. Sparks
Chief Cadastral Surveyor for Wyoming



TOWNSHIP NO 30 NORTH, RANGE NO 80 WEST OF THE SIXTH PRINCIPAL MERIDIAN, WYOMING. DEPENDENT RESURVEY



THIS PLAT OF THE RESURVEY OF TOWNSHIP NO. 30 NORTH, RANGE NO. 80 WEST, DELINEATES A RETRACEMENT AND REESTABLISHMENT OF THE LINES OF THE ORIGINAL SURVEY AS SHOWN UPON THE PLAT APPROVED FEBRUARY 8, 1884, IN THEIR TRUE ORIGINAL POSITION ACCORDING TO THE BEST AVAILABLE EVIDENCE OF THE POSITION OF THE ORIGINAL CORNERS; ALL DIFFERENCES BETWEEN THE MEASUREMENTS SHOWN ON THE ORIGINAL PLAT AND THOSE DERIVED IN THE RETRACEMENT HAVE BEEN DISTRIBUTED PROPORTIONALLY BETWEEN ACCEPTED CORNERS IN ACCORDANCE WITH SURVEYING RULES; REFERENCE WILL BE MADE TO THE ORIGINAL PLAT FOR THE SHOWING OF THE AREAS AND MORE DETAILED DESCRIPTIONS OF THE VARIOUS SMALLER SUBDIVISIONS; EXCEPT IN SECTIONS 2, 3, 5, 6, 7, 8, 18 AND 19, WHERE THE DIFFERENCES IN AREA ARE SO GREAT AS TO WARRANT A RECALCULATION OF THE PUBLIC LAND THEREIN.

RESURVEY AUTHORIZED BY COMMISSIONER'S LETTER "E" DATED MARCH 19, 1935.



Scale: 40 Chains to an Inch.

AREA RESURVEYED 23,951.26 ACRES

| LINES DESIGNATED | BY WHOM SURVEYED | GROUP | | MILEAGE | | WHEN SURVEYED | |
|-------------------|------------------|-------|----------------|---------|-------|----------------|---------------|
| | | NO. | DATE | MLS. | CHS. | BEGUN | COMPLETED |
| N.S. AND EXTERIOR | MARK D. KING | 137 | APRIL 17, 1935 | 18 | 28.63 | SEPT. 19, 1935 | OCT. 19, 1935 |
| W. EXTERIOR | W.H. CLARK | 5 | APRIL 25, 1911 | 5 | 78.04 | AUG. 25, 1915 | OCT. 26, 1915 |
| SUBDIVISIONAL | MARK D. KING | 137 | APRIL 17, 1935 | 61 | 0.50 | SEPT. 19, 1935 | OCT. 21, 1935 |

OFFICE OF THE SUPERVISOR OF SURVEYS
DENVER, COLORADO, JUNE 16, 1937.
THE ABOVE PLAT OF TOWNSHIP NO. 30 NORTH, RANGE NO. 80 WEST OF THE SIXTH PRINCIPAL MERIDIAN, WYOMING, IS STRICTLY CONFORMABLE TO THE FIELD NOTES OF THE RESURVEY THEREOF WHICH HAVE BEEN EXAMINED AND APPROVED.

Grant A. Johnson
SUPERVISOR OF SURVEYS

UNITED STATES
DEPARTMENT OF THE INTERIOR
GENERAL LAND OFFICE
WASHINGTON, D.C., FEB. 14, 1938.
THE SURVEY REPRESENTED BY THIS PLAT HAVING BEEN CORRECTLY EXECUTED IN ACCORDANCE WITH THE REQUIREMENTS OF LAW AND THE REGULATIONS OF THIS OFFICE, IS HEREBY ACCEPTED.

Antoinette F. King
ASSISTANT COMMISSIONER

1948-A

Transmitted to Department of the Interior
July 13, 1938

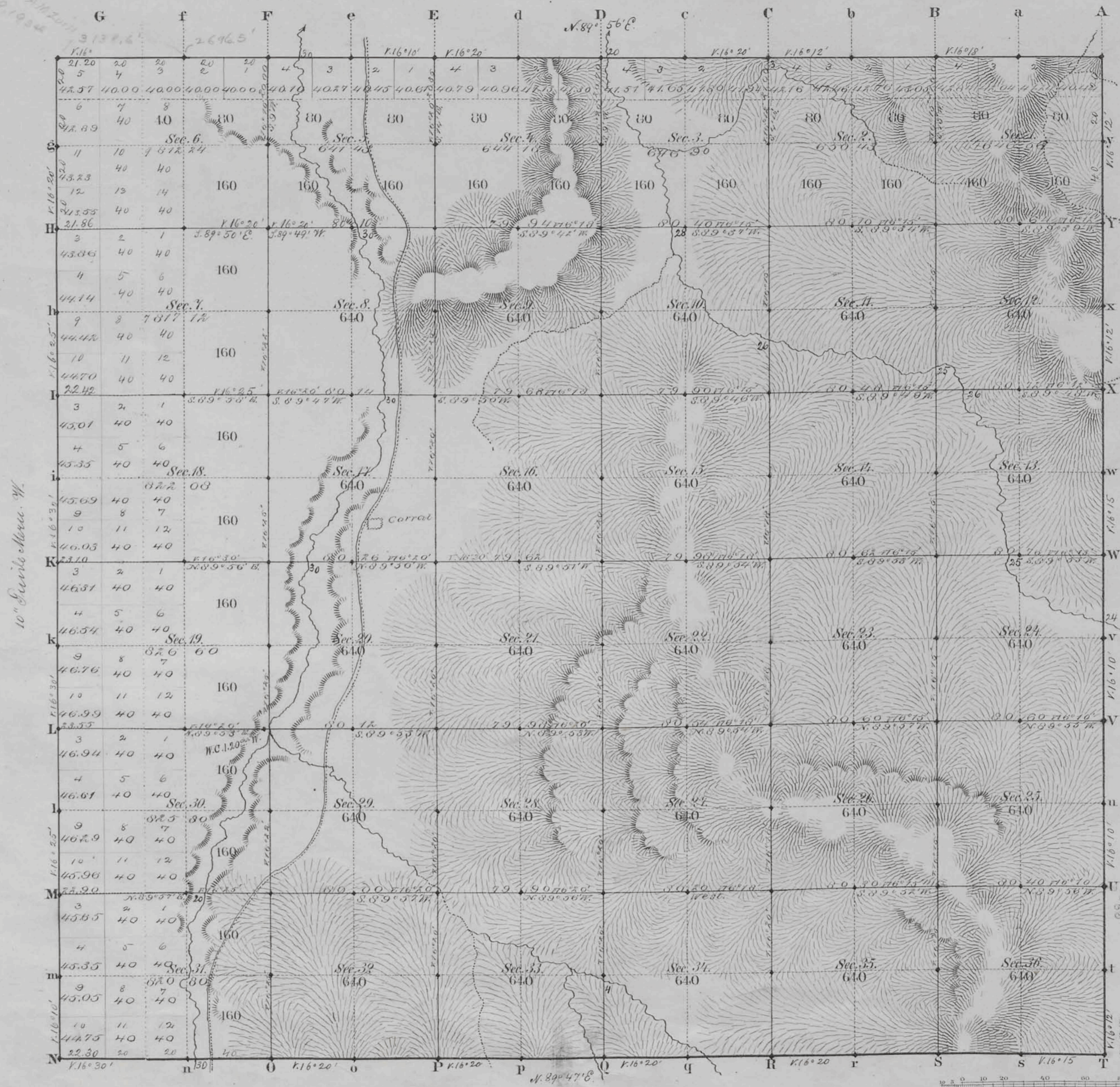
30-80

Handwritten initials and date

3056

See Letter AMZ
Jan. 29, 1884

TOWNSHIP N^o 30 NORTH, RANGE N^o 80 WEST of the 6th Principal MERIDIAN.



10" Equid. Merc. W.

Total number of Acres, 24,415.444

| Surveys Designated | By Whom Surveyed | Date of Contract | Amount of Survey M ^o C ^t E ^{ct} | When Surveyed | Magnetic Declination |
|--------------------|-------------------|------------------|---|----------------------------|----------------------|
| Township lines | James V. Lawrence | July 9, 1883 | 18 43 50 | Aug. 3, 9, 14, 1883 | 16° 15' East |
| Subdivisions | " | " | 67 43 46 | Aug. 27 - Oct. 1, 1883 | 16° 20' " |
| Connections | " | " | " | " | " |
| 10" Equid. M. W. | Lawrence & Grant | July 12, 1880 | 6 00 00 | August 29, & Sept. 4, 1880 | " |

The above Map of Township No. 30 North, Range No. 80 West of the Sixth Principal Meridian Wyoming Territory is strictly conformable to the field notes of the survey thereof on file in this Office, which have been examined and approved

Surveyor General's Office, *Edw. C. Dawley*
Cheyenne Wyoming
February 8th 1884

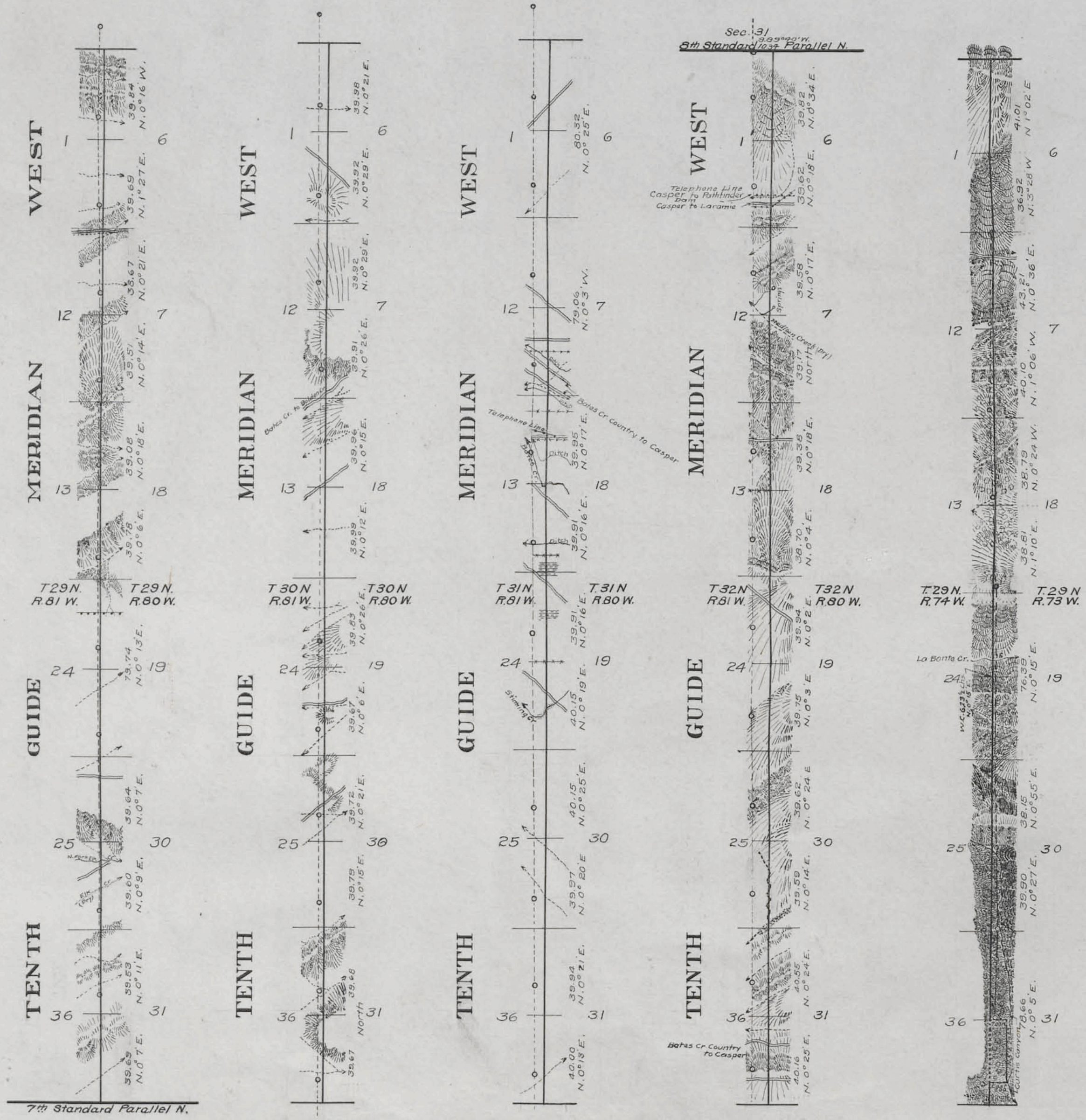
A. Gast & Co., St. Louis, Mo.

30-80

PLAT A

TOWNSHIP EXTERIORS

Scale: inch to 40 chains.



This plat "A" and the accompanying plat "B" of the Tenth Guide Meridian West, through Ts. 29, 30, 31 and 32 N. between Rs. 80 and 81 W.; the east boundary of T. 29 N., R. 74 W.; the south and east boundaries of Ts. 31 and 32 N., R. 74 W.; the east boundary of T. 31 N., R. 75 W., and the south boundaries of Ts. 31, and 32 N., R. 73 W., of the Sixth Principal Meridian, in the state of Wyoming, shows the restoration resurvey of said lines based on the position of monuments of the original surveys and indicates the position of the obliterated Owen 1891 resurvey of said lines; also a retracement of the Ninth Guide Meridian West, No. 1, through T. 31 N. and part of T. 32 N., between Rs. 72½ and 73 W., is shown.

This plat is strictly conformable to the field notes of the above mentioned resurveys and retracements by W. H. Clark, U.S. Surveyor, under his special instructions, for Group No. 5, Wyoming, dated April 25, 1911, which have been examined, approved and filed in this office.

U.S. Surveyor General's Office.
Cheyenne, Wyoming,
May 21, 1917

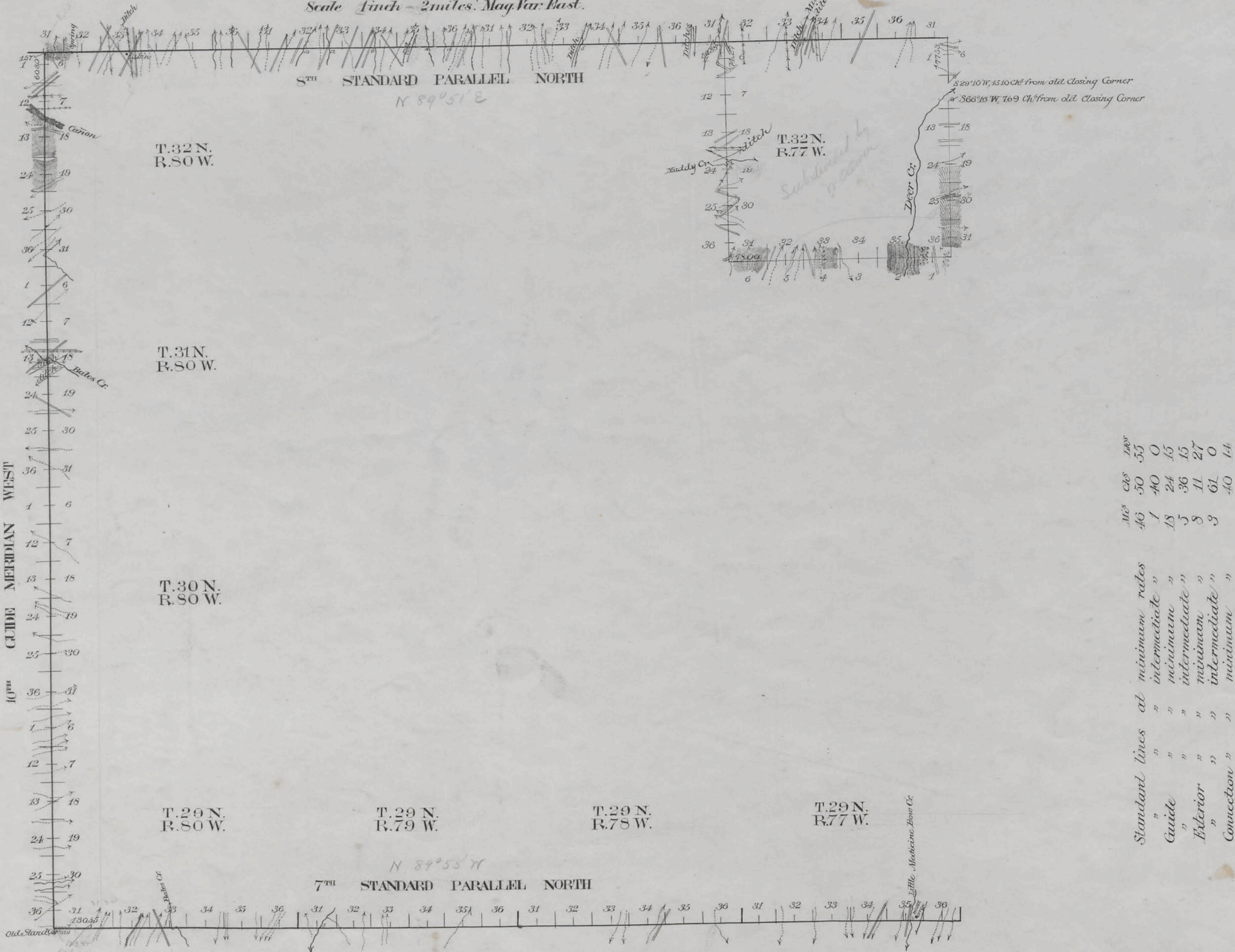
Charles L. Secker
Surveyor General.

| Surveys Designated | Amount | | When Surveyed | |
|----------------------------|--------|-----------|---------------|---------------|
| | Mts. | Chs. Lns. | Begun | Completed |
| Resurvey Meridian Lines | 23 | 68 05 | Nov. 28, 1914 | Aug. 31, 1915 |
| Resurvey Township Lines | 46 | 72 71 | Oct. 8, 1914 | June 4, 1915 |
| Retracement Meridian Lines | 11 | 36 61 | May 12, 1915 | June 4, 1915 |
| Connections | 23 | 61 | Nov. 28, 1914 | Aug. 31, 1915 |

Index 4347

EXTERIOR LINES

Scale 1 inch = 2 miles. Mag. Var. East.



| Surveys Designated | By Whom Surveyed | Date of Contract | Amount of Surveys M ^s Ch ^s Lk ^s | Date of Survey | Magnetic Declin'n |
|-----------------------------|-----------------------|------------------|---|----------------|-------------------|
| Exterior Lines | W ^m O Owen | June 25, 1894 | 11 72 27 | July 5 6, 1891 | 15° 30' East |
| 7 th Stand. Par. | " " " | " " " | 24 50 55 | June 3 6, " | 16° 05' " |
| 8 th Stand. Par. | " " " | " " " | 23 40 00 | " 11 14 " | 15° 45' " |
| 10 th Guide Mer. | " " " | " " " | 23 60 30 | " 8-10 " | 16° 10' " |
| Connections | " " " | " " " | 40 14 | | |

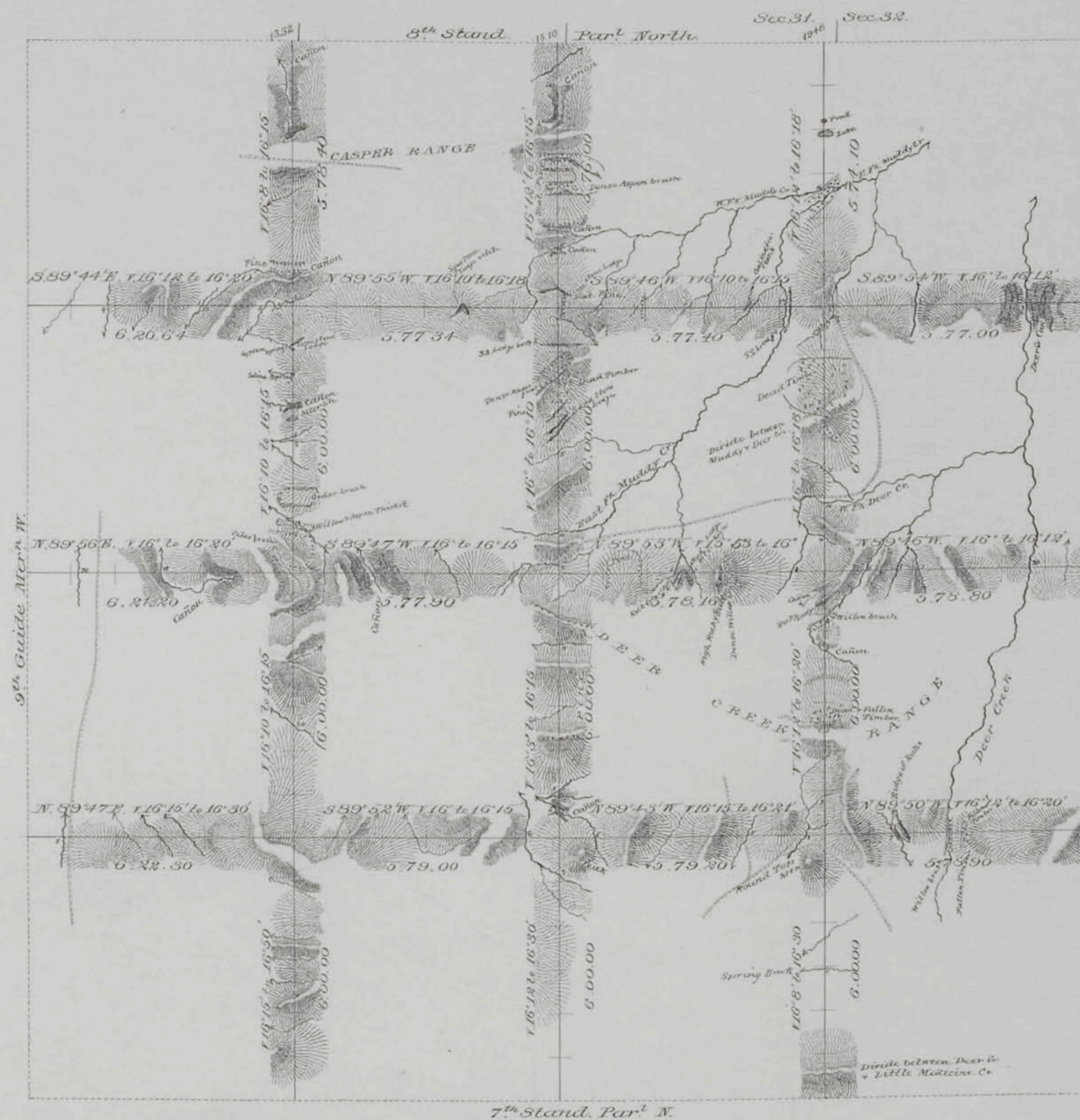
I hereby certify that the above diagram of the 7th Standard Parallel North in Ranges 77, 78, 79 and 80 West; The 8th Standard Parallel North in Ranges 77, 78, 79 and 80 West; The 10th Guide Meridian West in Townships 29, 30, 31 and 32 North, and the Exterior lines of Township 32 North, Range 77 West of the 6th Principal Meridian in Wyoming is strictly conformable to the field notes of the survey thereof on file in this office which have been examined and approved.

Surveyor General's Office
Cheyenne, Wyoming, Dec. 7, 1891

Wm A. Richards
Surveyor General

EXTERIOR LINES.

Scale 3 miles to 1 inch Magnetic Variation, E.



T. 32N.

T. 31N.

T. 30N.

T. 29N.

R. 80W.

R. 79W.

R. 78W.

R. 77W.

| Surveys Designated | By Whom Surveyed | Date of Contract | Amount of Acres | When Surveyed |
|--------------------|------------------|---------------------------|-----------------|---|
| Exterior lines | Jones & Savitt | July 9 th 1883 | 144 36 34 | July 13 th Aug 16 th 1883 |
| Conductions | " " | " " | 47 90 | " " " |

I hereby certify that the above diagram of the Exterior lines of Tps 29, 30, 31 & 32 N, R's 77, 78, 79, & 80 W. of the 6th P.M., Wyoming Territory is strictly conformable to the field notes of the survey thereof on file in this office which have been examined and approved
 Surveyor General's Office,
 Cheyenne, Wyoming February 8th 1884

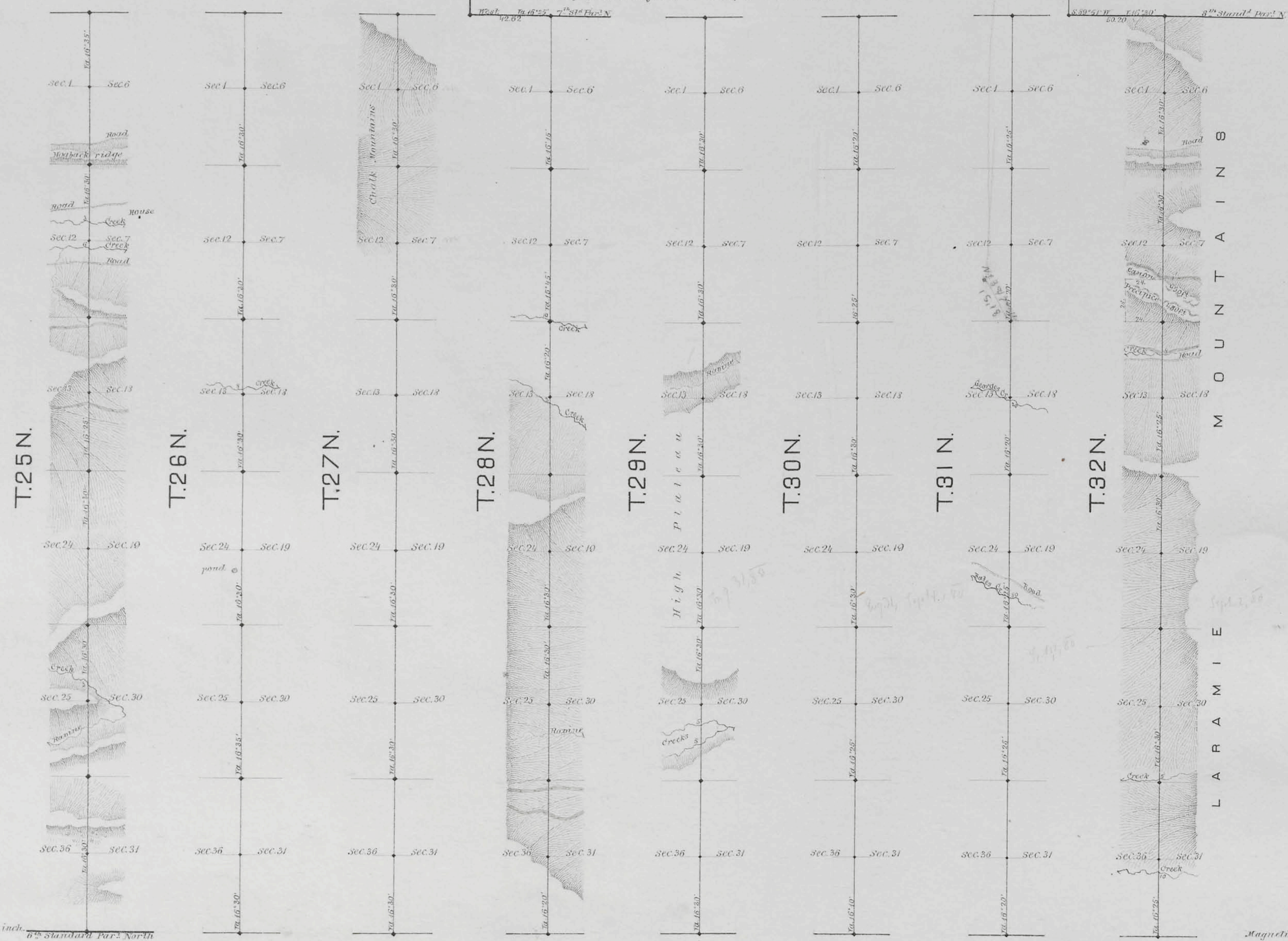
Edw. C. Davis Sur. Gen.

Index

695

10TH GUIDE MERIDIAN WEST

From the 6th to the 8th Stand^d Par^l North, betwⁿ Ranges 80 & 81 West, of the 6th Princ^l Mer^d



Scale, 40 chains to an inch.
6th Standard Par^l North

Magnetic variation East.

| Surveys Designated | By whom surveyed | Date of contract | Amount of surveys | When surveyed |
|---|------------------|------------------|-------------------|-------------------|
| 10 th Guide Mer ^d W | Dominy & Grant | August 42, 1830 | 48 00 00 | Aug. & Sept. 1830 |
| Connections | " | " | 42 62 " | " |

Thereby certify that the above diagram of the 10th Guide Meridian West of the 6th Principal Mer, from the 6th to the 8th Standard Parallel N. in Wyo. Ter. is strictly conformable to the field notes of the survey thereof on file in this office, which have been examined and approved.

Surveyor General's Office
Cheyenne, Wyo. March 12, 1881.

Edw. C. David
Surveyor General.