

T. 48.5 N., R. 103 W., Sixth Principal Meridian, Wyoming, Field Note Links

Plat Accession Number(s)	Year(s) of Survey	Township Subdivision Plats
4948	1920	https://www.wy.blm.gov/cadastral/countyplats/park/fieldnotes/t48.5nr103w_gp035fn.pdf

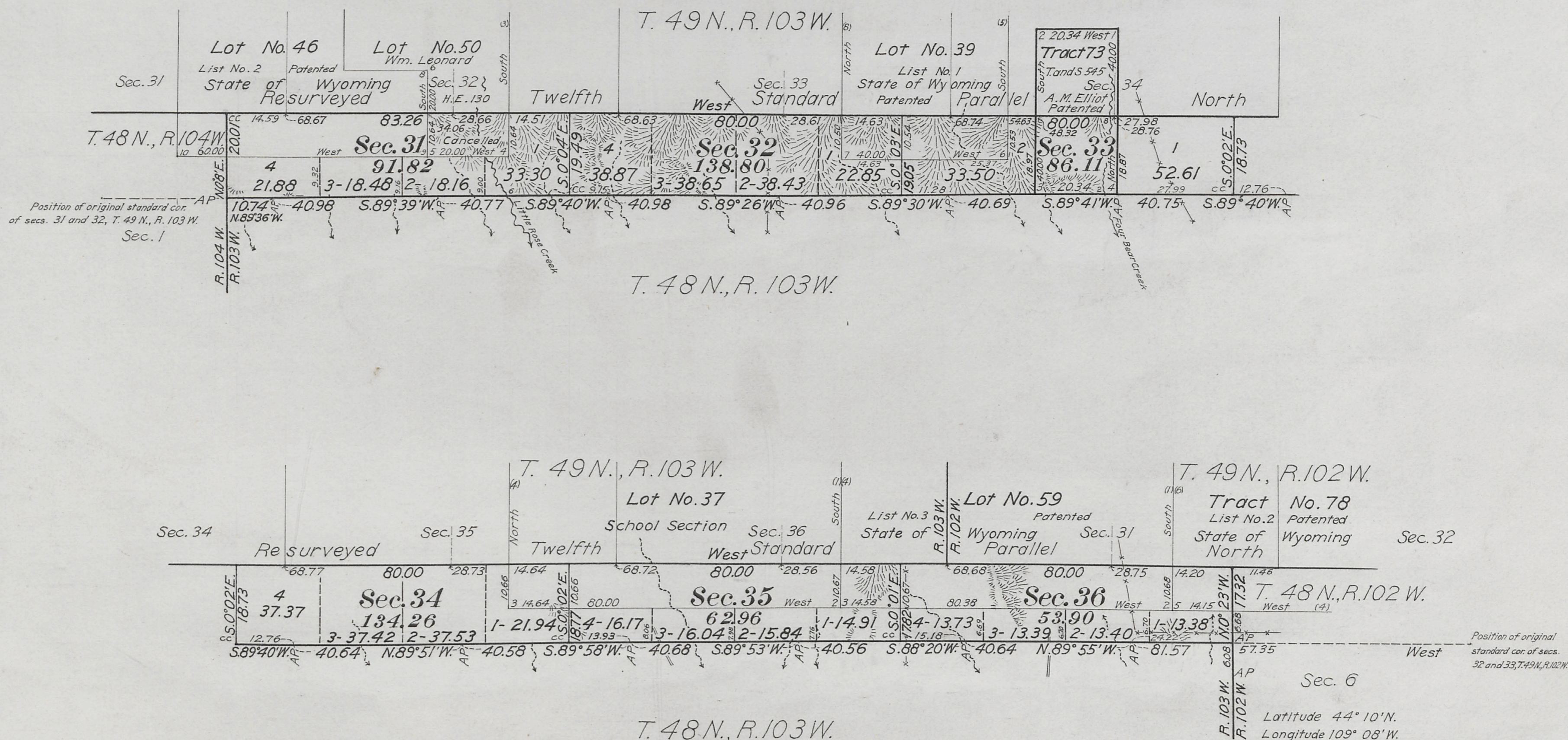
Accepted April 30, 1921.

Township No. 48½ North, Range No. 103 West of the Sixth Principal Meridian, Wyoming

Scale 20 Chains to an Inch

INDEX TO SEGREGATED TRACTS

RESURVEY	DESCRIPTION BY ORIGINAL SURVEY							
	Subdivisions	Sec.	T.	R.	KIND	ENTRY No.	Entryman	Status in Land Office
Lot No. 37	All	36	49	103	School Section		Wyoming	Grant
Lot No. 39	E ² NE ⁴ , NW ⁴ NE ⁴ , W ²	34	"	"	S.L.	List 1	Wyoming	Patented
Lot No. 46	SE ² NE ⁴ , NW ⁴ NE ⁴ , W ² SW ⁴ SE ⁴	32	"	"	S.L.	List 2	Wyoming	Patented
Lot No. 50	SW ⁴ NE ⁴ , NW ⁴ SE ⁴ , E ² SE ⁴	32	"	"	H.E.	130	Wm. Leonard	Cancelled
Lot No. 59	All	31	"	102	S.L.	List 3	Wyoming	Patented
Tract No. 73	E ² SE ⁴	34	"	103	Tand S.	545	Alice May Elliot	Patented
Tract No. 78	W ² , SE ⁴	32	"	102	S.L.	List 2	Wyoming	Patented



Surveys Designated	By Whom Surveyed	Group			When Surveyed			
		No.	Date	Mls.	Chs.	Lks.	Begun	Completed
Resurvey 12th Standard Parallel	Hoffman and Cratsenberg Alex Douglas	35	May 27, 1905 July 24, 1920	6	03	26	July 31, 1905 October 8, 1920	August 2, 1905 October 9, 1920
Resurvey S and W Township Lines	Alex Douglas	35	July 24, 1920	6	23	08	October 11, 1920	October 1920
Resurvey E Township Line	Gonin and Harshbarger Alex Douglas	34 35	March 11, 1916 July 24, 1920	00	17	32	July 26, 1916 October 8, 1920	July 26, 1916 October 8, 1920
Subdivision Lines	Alex Douglas	35	July 24, 1920	1	13	66	October 14, 1920	October 14, 1920
Connecting Lines	Alex Douglas	35	July 24, 1920	3	24	59	October 8, 1920	October 14, 1920
Segregated Tract No. 73	Alex Douglas	35	July 24, 1920	1	40	68	October 15, 1920	October 15, 1920
Segregated Tract No. 78	William R. Bandy	10	April 6, 1911				May 12, 1911	May 12, 1911
Segregated Lots 37, 39, 46, 50, 59	Hoffman and Cratsenberg	35	May 27, 1905				September 4, 1905	May 1, 1906

The above Map of Township No. 48½ North, Range No. 103 West of the Sixth Principal Meridian, Wyoming, is strictly conformable to the field notes of the survey thereof, on file in this office, which have been examined and approved.
 Surveyor General's Office,
 Cheyenne, Wyoming
 March 25, 1921

Charles Decker
 Sur. Genl.