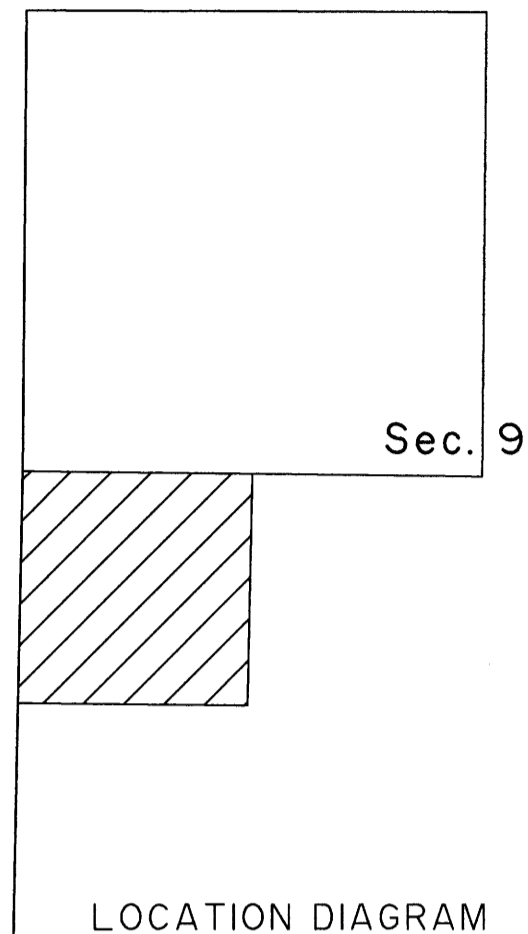


## T. 49 N., R. 105 W., Sixth Principal Meridian, Wyoming, Field Note Links

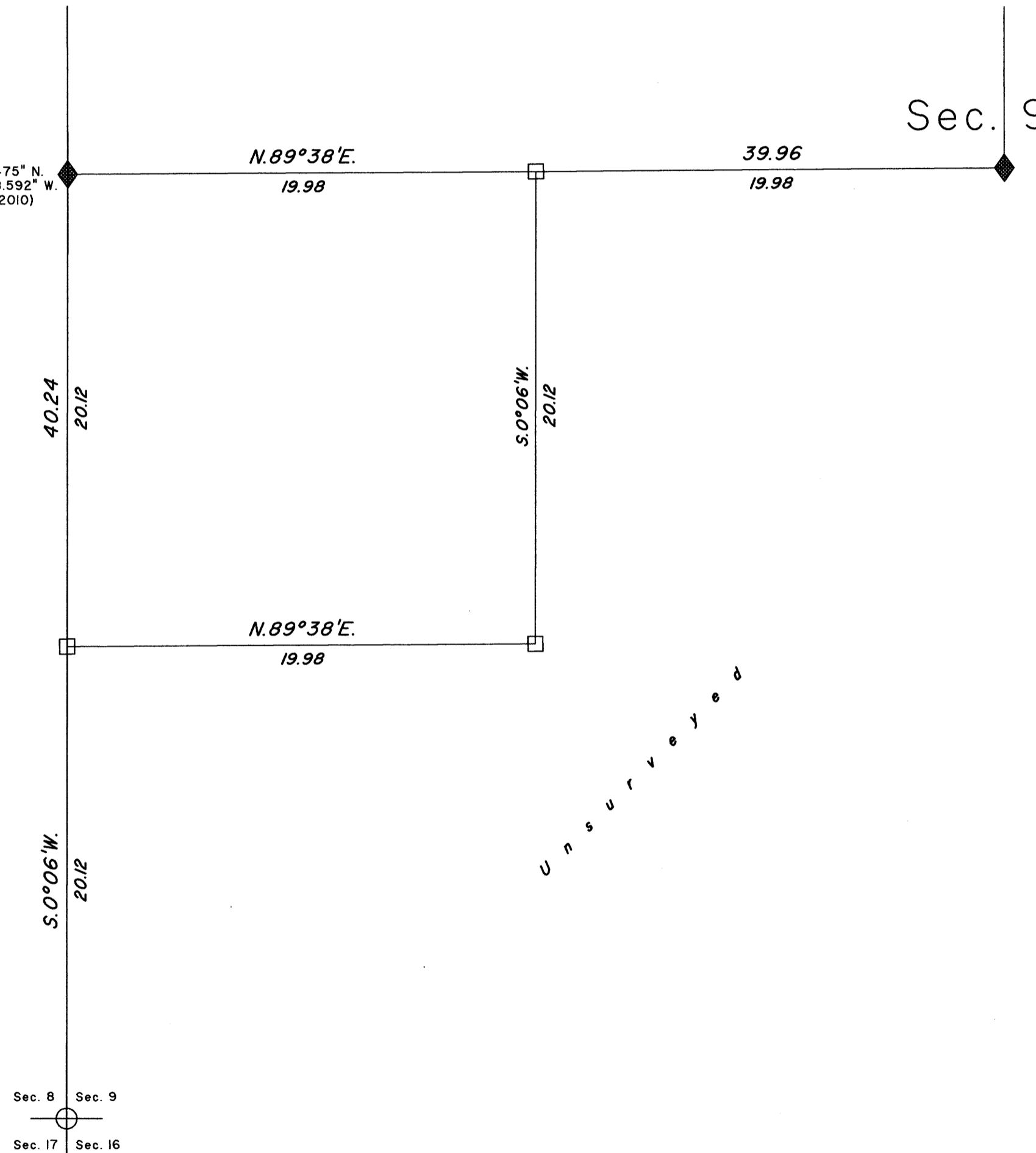
Plat Accession Number(s)	Year(s) of Survey	
		Township Subdivision Plats
7987	1991	<a href="https://www.wy.blm.gov/cadastral/countyplats/park/fieldnotes/t49nr105w_gp550fn.pdf">https://www.wy.blm.gov/cadastral/countyplats/park/fieldnotes/t49nr105w_gp550fn.pdf</a>
7912	1985	<a href="https://www.wy.blm.gov/cadastral/countyplats/park/fieldnotes/t49nr105w_gp472fn.pdf">https://www.wy.blm.gov/cadastral/countyplats/park/fieldnotes/t49nr105w_gp472fn.pdf</a>
4833	1904	<a href="https://www.wy.blm.gov/cadastral/countyplats/park/fieldnotes/t49nr105w_c292fn.pdf">https://www.wy.blm.gov/cadastral/countyplats/park/fieldnotes/t49nr105w_c292fn.pdf</a>
4832	1904	<a href="https://www.wy.blm.gov/cadastral/countyplats/park/fieldnotes/ext2889.pdf">https://www.wy.blm.gov/cadastral/countyplats/park/fieldnotes/ext2889.pdf</a>
3026	1883	<a href="https://www.wy.blm.gov/cadastral/countyplats/park/fieldnotes/ext3026.pdf">https://www.wy.blm.gov/cadastral/countyplats/park/fieldnotes/ext3026.pdf</a>
		Yellowstone National Park Boundary
5963	1893	<a href="https://www.wy.blm.gov/cadastral/countyplats/fremont/fieldnotes/ynp_0013fn.pdf">https://www.wy.blm.gov/cadastral/countyplats/fremont/fieldnotes/ynp_0013fn.pdf</a>

TOWNSHIP 49 NORTH, RANGE 105 WEST, OF THE SIXTH PRINCIPAL MERIDIAN, WYOMING.

SUPPLEMENTAL PLAT



Lat. 44°13'48.475" N.  
 Long. 109°30'48.592" W.  
 NAD 83 (Epoch 2010)



This plat creating new areas in the unsurveyed SW1/4, section 9, Township 49 North, Range 105 West, Sixth Principal Meridian, Wyoming is based on a survey executed under state authority in June 2019 by Russell B. Blough, Wyoming Professional Land Surveyor No. 10014. A plat of this survey, titled "UNITED STATES FOREST SERVICE PARCEL FOR LAND EXCHANGE" will be recorded in the Park County Clerk's Office.

Plat prepared by Jeremy D. Davis, Cadastral Surveyor, beginning March 23, 2020 and completed March 24, 2020, pursuant to special instructions dated March 23, 2020, for Group No. 1023, Wyoming.

LEGEND

- ◆ BLM monument, 2½" diam. aluminum post with aluminum cap
- 3" diam. aluminum cap attached to an aluminum post, set by William McJunkin Wyoming Professional Surveyor No. 543.
- 2½" diam. aluminum post with aluminum cap attached, set by Russell B. Blough Wyoming Professional Surveyor No. 10014.

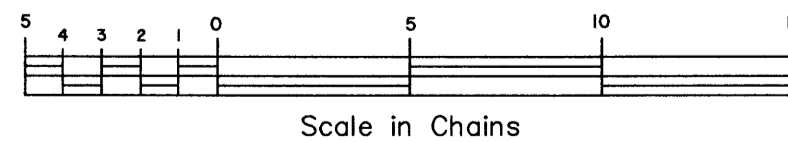
UNITED STATES DEPARTMENT OF THE INTERIOR  
 BUREAU OF LAND MANAGEMENT

Cheyenne, Wyoming March 25, 2020

This plat, showing new areas, is based upon official and state authority survey records and, having been correctly prepared in accordance with the regulations of this Bureau, is hereby accepted.

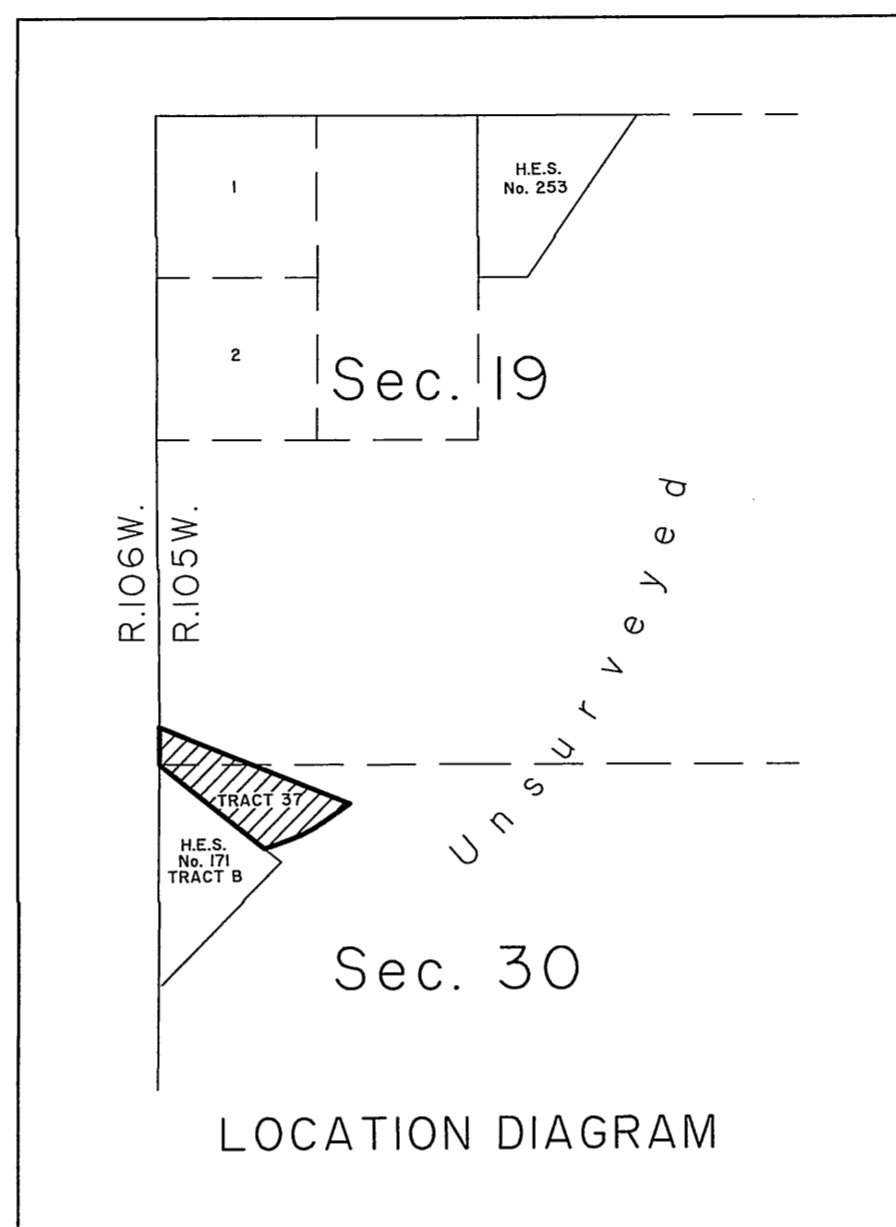
For the Director

Sonja S. Sparks  
 Chief Cadastral Surveyor for Wyoming



TOWNSHIP 49 NORTH, RANGE 105 WEST, OF THE SIXTH PRINCIPAL MERIDIAN, WYOMING.

SUPPLEMENTAL PLAT



This plat showing the survey of Tract 37 is based on a survey executed under state authority by Paul A. Blough, Wyoming Professional Land Surveyor No. 2332. A plat of his survey, titled "PARCELS FOR LAND EXCHANGE," was recorded in the Park County Clerk's Office, on June 9, 2014, Document No. 2014-2758, Plat Cabinet M, Page 46.

Plat prepared by Joel T. Ebner, Cadastral Surveyor, beginning June 10, 2014 and completed June 12, 2014, pursuant to Special Instructions dated June 5, 2014, for Group No. 909, Wyoming.

LEGEND

- BLM monument, 2 1/2" diam. aluminum post with aluminum cap.
- Monument set by Paul A. Blough, L.S. 2332, 2 1/2" diam. aluminum post with aluminum cap.

Note: For more detailed descriptions of the monumentation refer to Corner Records filed in the Park County Clerk's Office by Paul A. Blough, L.S. 2332.

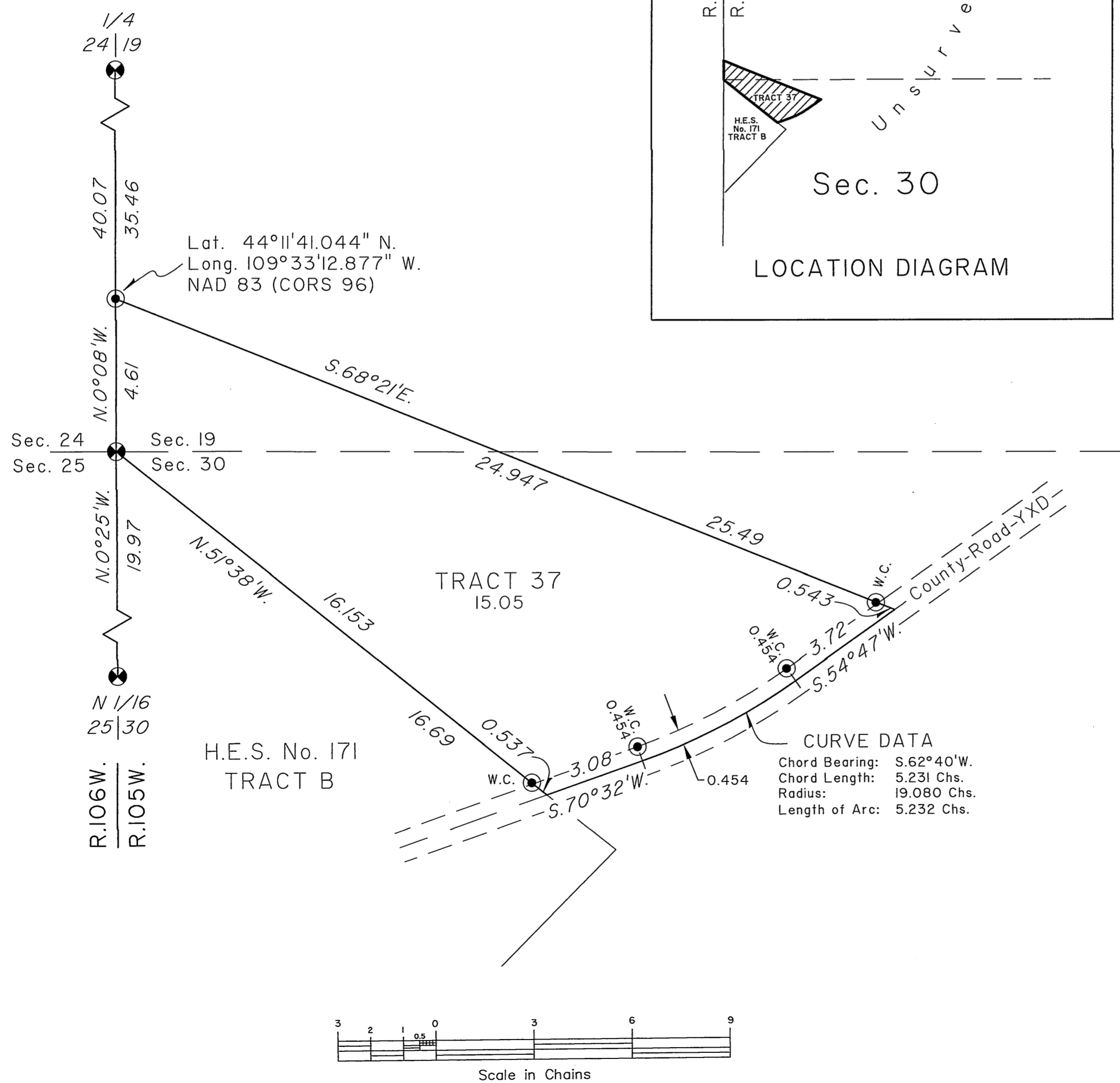
UNITED STATES DEPARTMENT OF THE INTERIOR  
BUREAU OF LAND MANAGEMENT

Cheyenne, Wyoming June 17, 2014

This plat, showing amended lottings, is based upon the official records and state authority survey records and, having been correctly prepared in accordance with the regulations of this Bureau, is hereby accepted.

For the Director

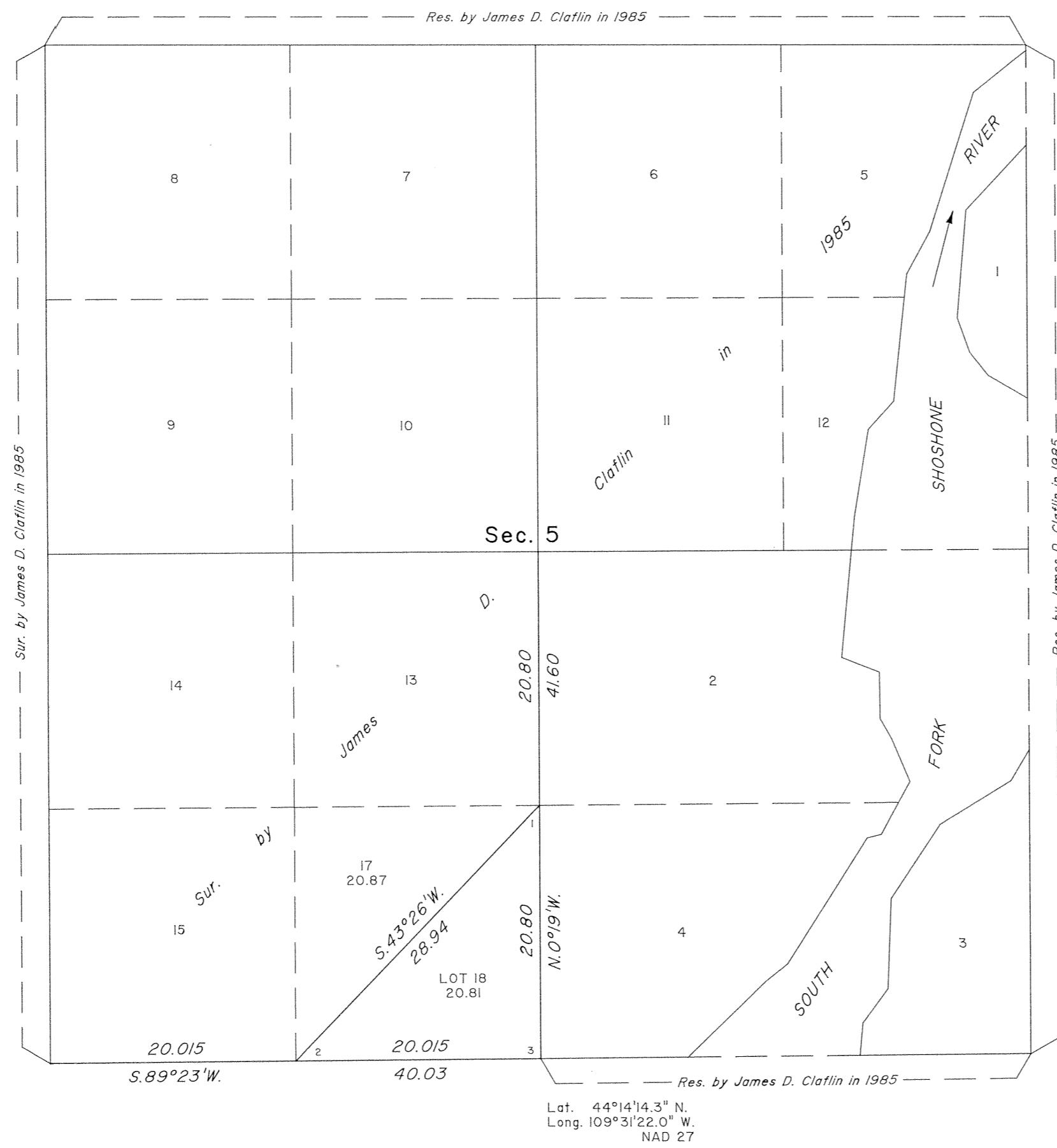
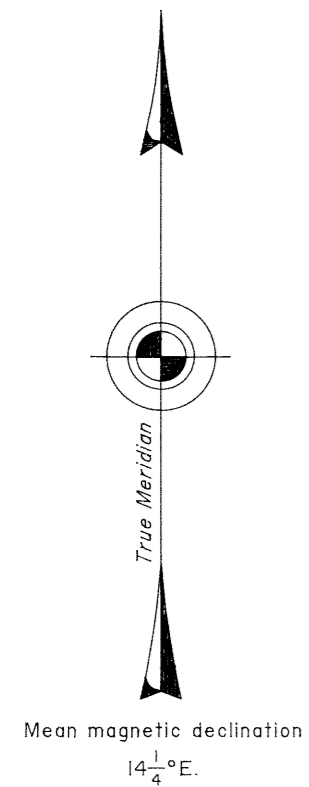
John P. Lee  
Chief Cadastral Surveyor for Wyoming



JTE

JTE

TOWNSHIP 49 NORTH, RANGE 105 WEST, OF THE SIXTH PRINCIPAL MERIDIAN, WYOMING.  
DEPENDENT RESURVEY AND METES AND BOUNDS SURVEY



A history of surveys is contained in the field notes.

This plat represents the dependent resurvey of portions of the subdivisional lines and subdivision of section 5 designed to restore the corners in their true original locations according to the best available evidence, and the metes and bounds survey of Lot 18, Section 5, T. 49 N., R. 105 W., Sixth Principal Meridian, Wyoming.

Except as indicated hereon, the lottings and areas are as shown on the plat approved March 23, 1905, and the plat accepted August 14, 1991.

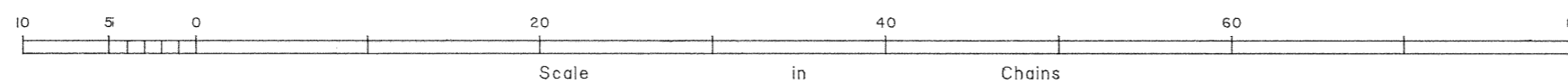
Survey executed by James D. Clafin, Cadastral Surveyor, beginning August 29, 1991, and completed August 30, 1991, pursuant to Special Instructions dated August 6, 1991, for Group No. 550, Wyoming.

UNITED STATES DEPARTMENT OF THE INTERIOR  
BUREAU OF LAND MANAGEMENT

Cheyenne, Wyoming March 2, 1994

This plat is strictly conformable to the approved field notes, and the survey, having been correctly executed in accordance with the requirements of law and the regulations of this Bureau, is hereby accepted.

For the Director  
*John P. Lee*  
Chief Cadastral Surveyor for Wyoming

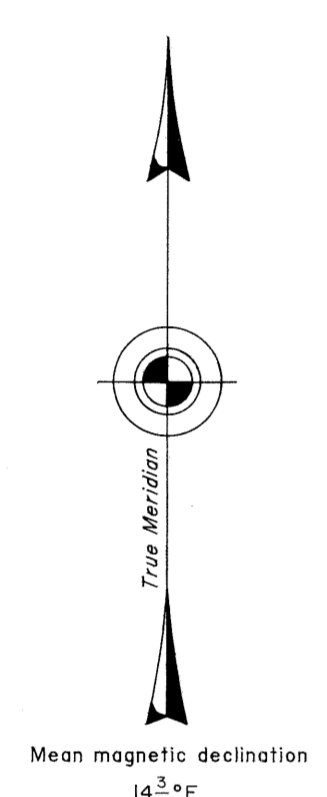
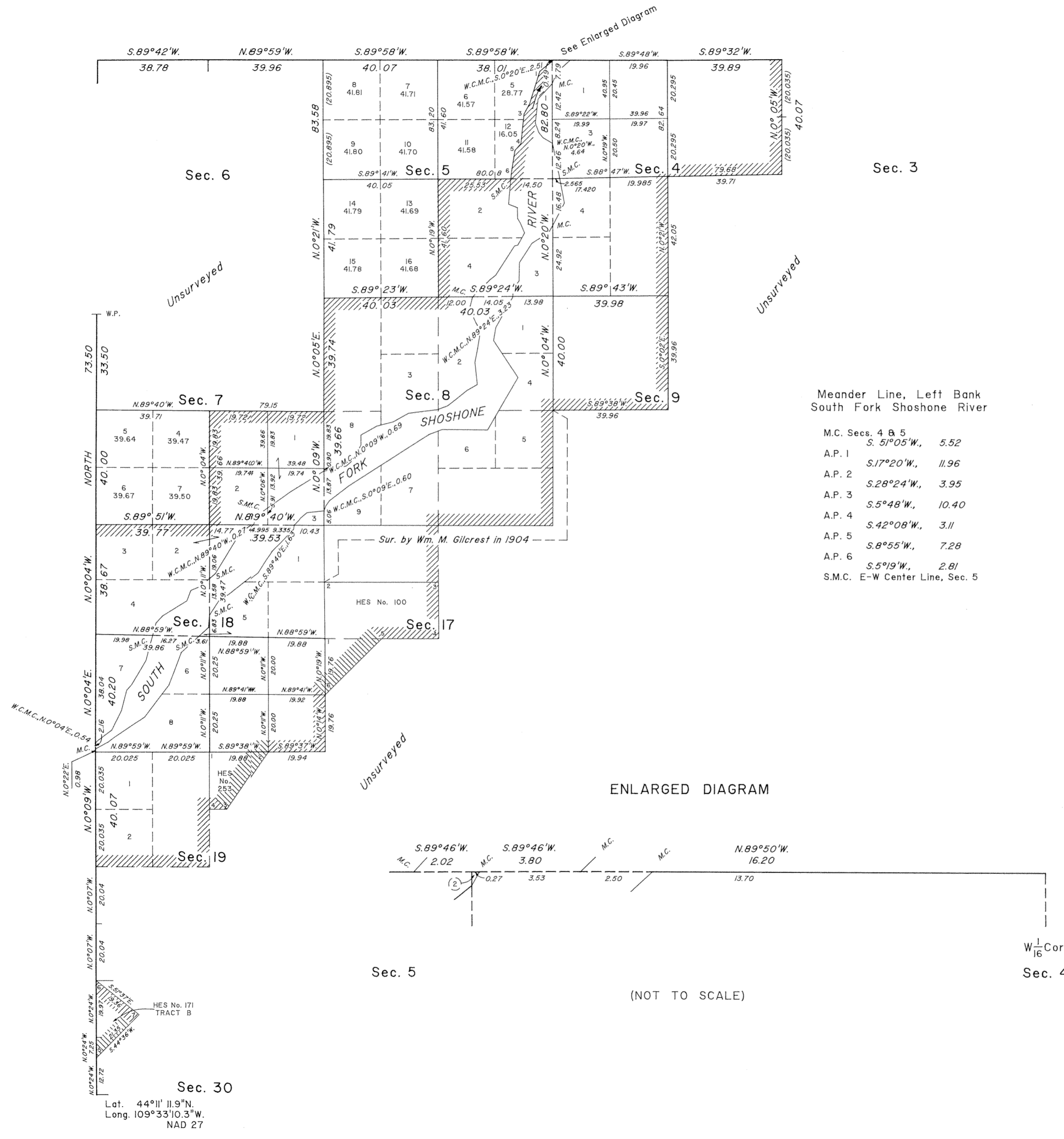


Sec. 8

Sec. 6

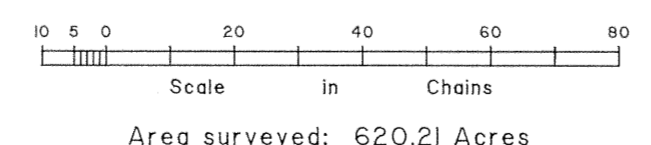
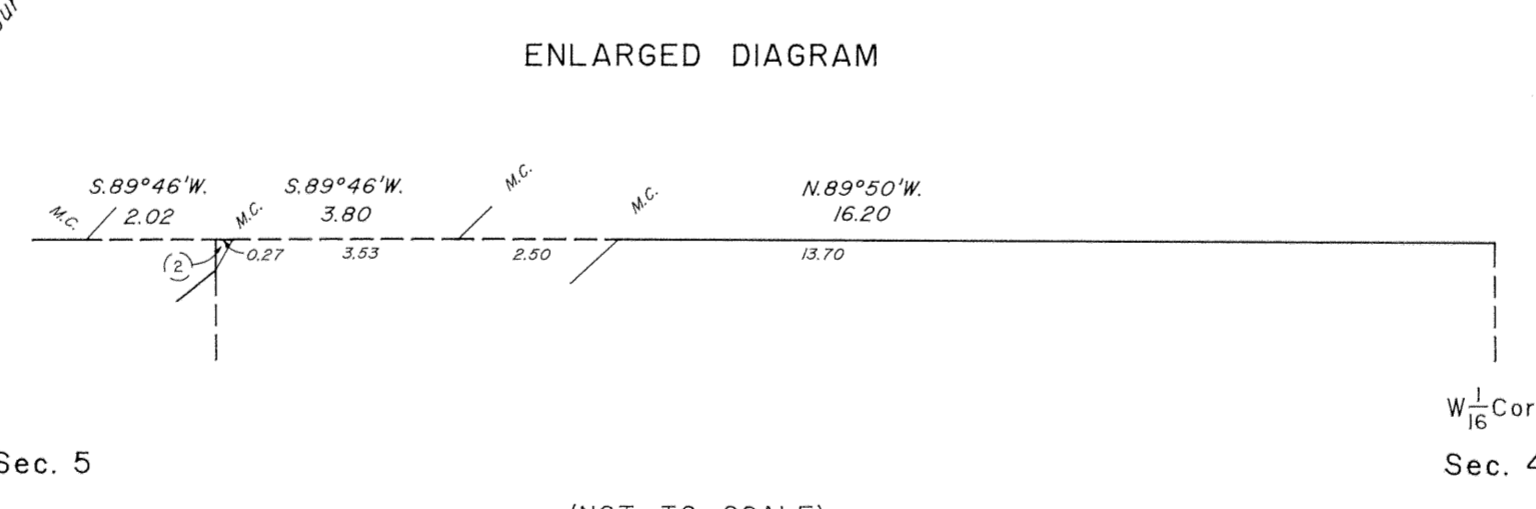
Sec. 4

TOWNSHIP 49 NORTH, RANGE 105 WEST, OF THE SIXTH PRINCIPAL MERIDIAN, WYOMING.  
DEPENDENT RESURVEY AND SURVEY



Meander Line, Left Bank  
South Fork Shoshone River

M.C. Secs. 4 & 5	
S. 51°05'W.	5.52
A.P. 1 S. 17°20'W.	11.96
A.P. 2 S. 28°24'W.	3.95
A.P. 3 S. 5°48'W.	10.40
A.P. 4 S. 42°08'W.	3.11
A.P. 5 S. 8°55'W.	7.28
A.P. 6 S. 5°19'W.	2.81
S.M.C. E-W Center Line, Sec. 5	



A history of surveys is contained in the field notes.

This plat represents the dependent resurvey of portions of the west and north boundaries, subdivisional lines, Homestead Entry Survey No. 171, Tract B, and adjusted meander lines designed to restore the corners in their true original locations according to the best available evidence, and the extension survey of portions of the west boundary and subdivisional lines and the subdivision of certain sections, T. 49 N., R. 105 W., Sixth Principal Meridian, Wyoming.

Except as indicated hereon, the lottings and areas are as shown on the survey plat approved March 23, 1905, and Homestead Entry Survey plats approved September 29, 1915, September 21, 1918, and March 16, 1932.

Survey executed by James D. Clafin, Cadastral Surveyor, beginning June 17, 1985, and completed August 5, 1985, pursuant to Special Instructions dated May 29, 1985, for Group No. 472, Wyoming.

UNITED STATES DEPARTMENT OF THE INTERIOR  
BUREAU OF LAND MANAGEMENT

Cheyenne, Wyoming August 14, 1991

This plat is strictly conformable to the approved field notes, and the survey, having been correctly executed in accordance with the requirements of law and the regulations of this Bureau, is hereby accepted.

For the Director  
*John P. Lee*  
Chief Cadastral Surveyor for Wyoming

W.H.B.

288



**DIAGRAM**  
**OF THE**  
**N.E. & S. BOUNDARIES**  
**OF THE**  
**PUBLIC FOREST RESERVATION**  
**AND THE**  
**FRAC.E. BOUNDARY**  
**OF THE**  
**YELLOWSTONE NATIONAL PARK**  
**IN**  
**WYOMING**

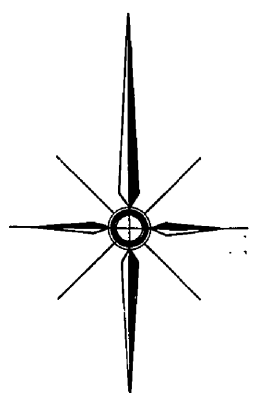
*As surveyed by Philip M. Gallaher U.S. Deputy Surveyor Aug. 3<sup>rd</sup> to Oct. 22<sup>nd</sup> 1893, under his contract No. 263 dated Oct. 17, 1894.*

Scale 1/2 in = 1 mile  
 O indicates corners established  
 + indicates proper points for corners but not established

*I certify that the above diagram of the N.E. & S. Boundaries of the Public Forest Reservation and the Frac.E. Boundary of the Yellowstone National Park in Wyoming, is strictly conformable to the field notes of the survey thereof on file in this office which have been examined and approved.*

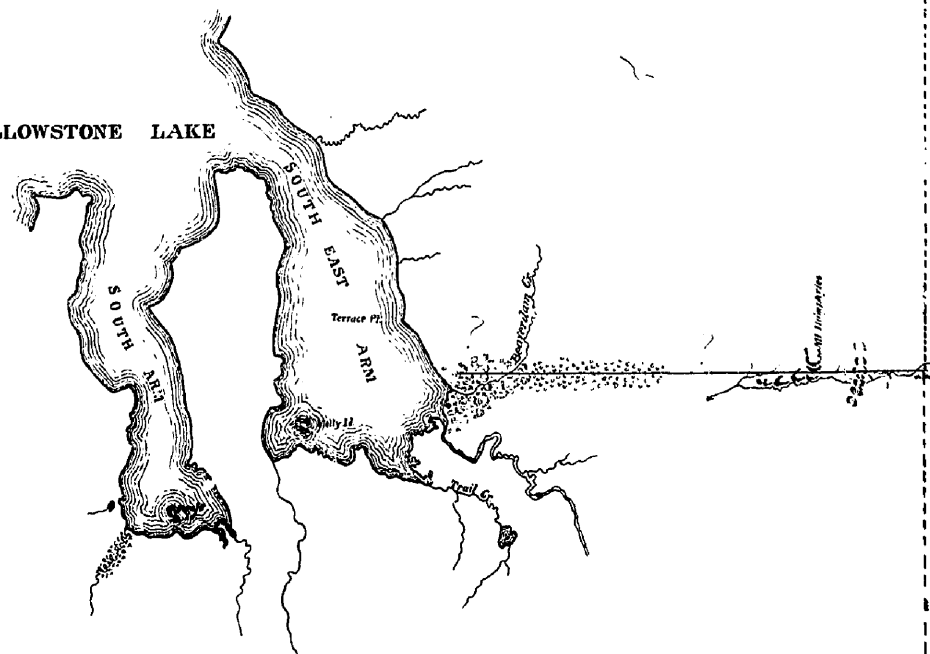
U.S. Surveyor's Office  
 Helena Mont July 17, 1894.

*Joseph H. Weil*  
 Surveyor General  
 for Montana



YELLOWSTONE NATIONAL PARK

YELLOWSTONE LAKE



South Boundary Yellowstone National Park

PUBLIC

W Y O M I N G

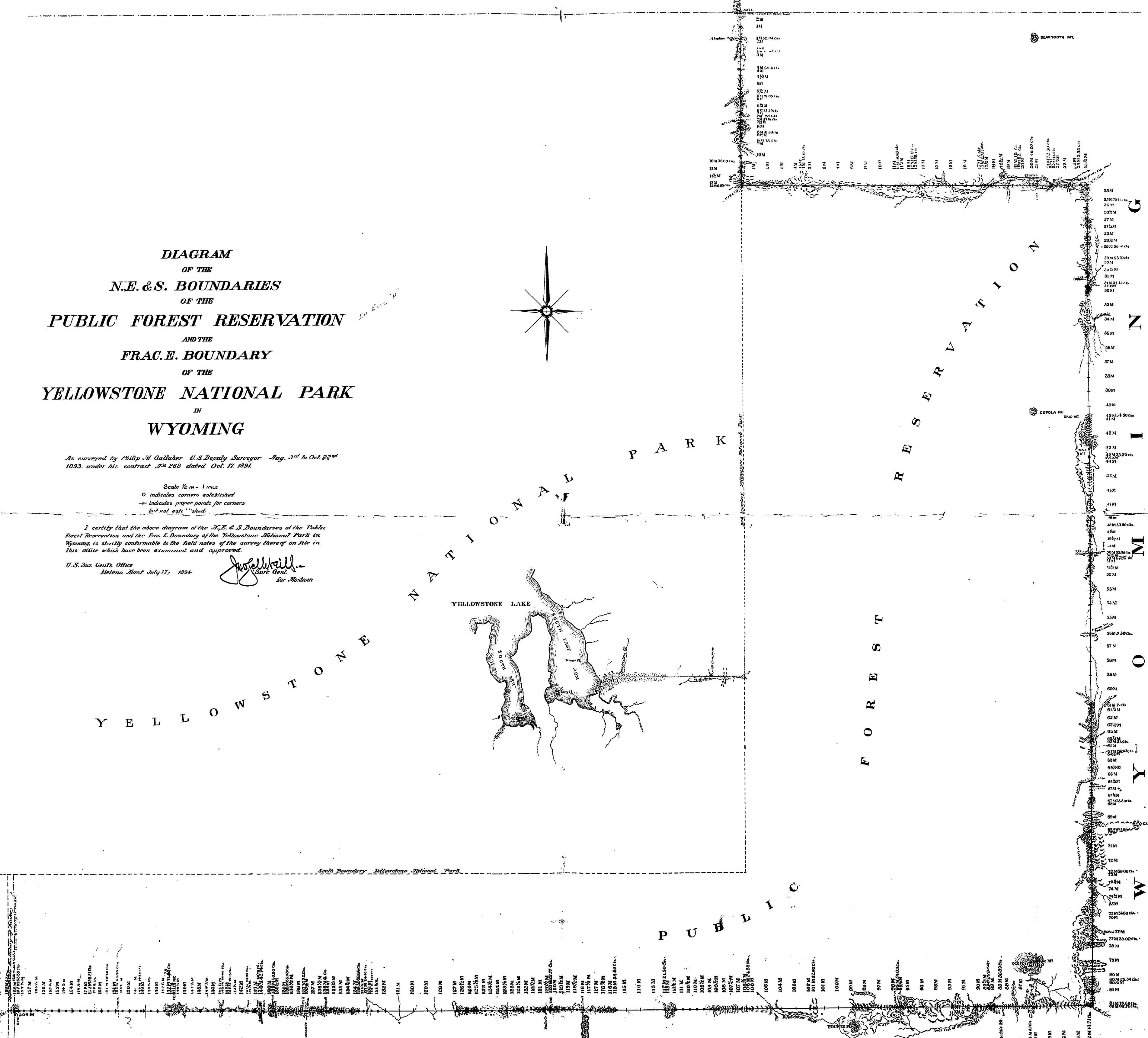
FORREST

RESERVATION

Y O M I N G

N I M I N G

13 I D A H O



# TOWNSHIP EXTERIORS.

Scale: 1 inch ≈ 160 chains.

This Plat  
of  
a part of the 12<sup>th</sup> Standard Parallel North through R.106W,  
and parts of the North and West boundaries of T.49N, R.105W;  
the Resurvey of  
the 13<sup>th</sup> Guide Meridian West through Tps. 49, 50, 51 and 52 N.;  
west of the 6<sup>th</sup> Principal Meridian,  
Wyoming,  
is strictly conformable to the field notes of the survey thereof  
by  
William M. Gilcrest, U.S.D.S.,  
under his  
Contract No. 292,  
dated June 29, 1904,  
which have been examined, approved and filed in this office.  
U.S. Surv. Gen's Office,  
Cheyenne, Wyoming,  
March 23, 1905

*Alfred P. Hansen*  
U.S. Surv. Gen.

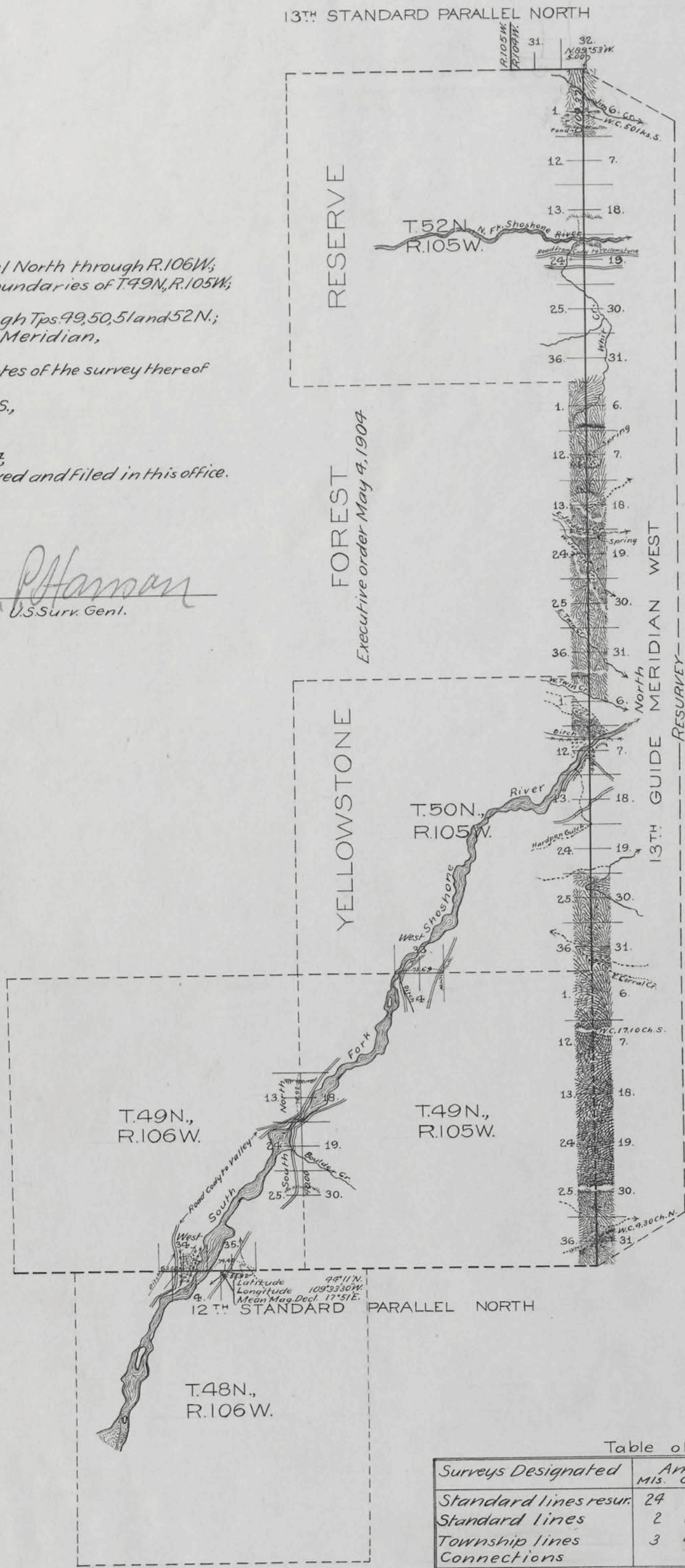


Table of Mileage.

Surveys Designated	Amount		When Surveyed
	Mis.	Lks.	
Standard lines resur.	24 29	37	Apr. 18-June 12, 1904
Standard lines	2 00	00	May 18, 1904
Township lines	3 40	00	May 11-16, 1904
Connections	5 00	00	June 12, 1904

*Triplicate plat forwarded Apr. 10, 1905.  
Survey accepted by the Hon. Commissioner  
in his letter "E", dated Apr. 3, 1905.*



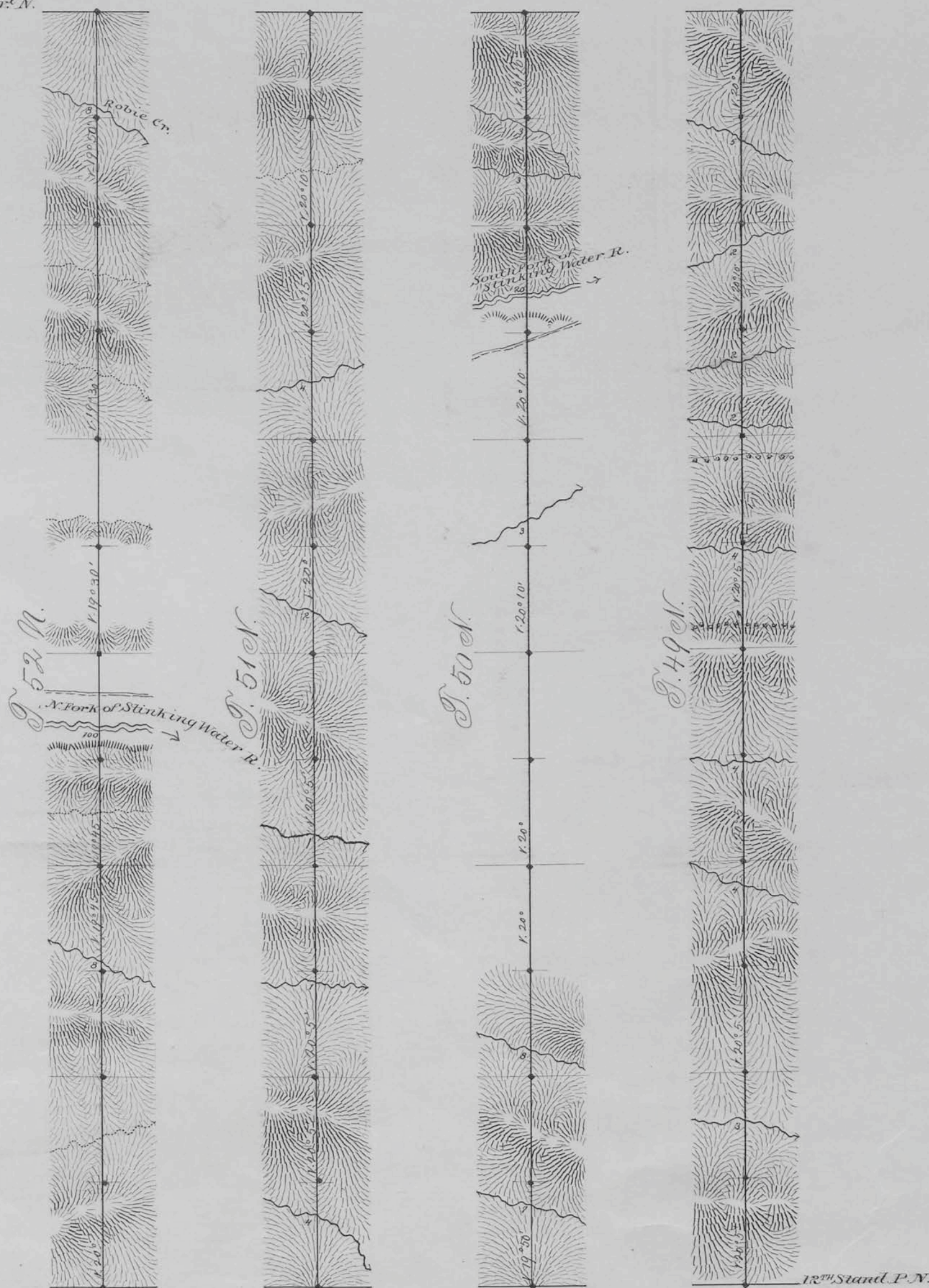
(24)  
Indexes

3026

### 13<sup>th</sup> Guide Meridian West.

In Townships 49, 50, 51, & 52 N; betw. Rgs. 104 & 105 W. 6<sup>th</sup> P. M. W. Ter.  
Magn. Var. East; Scale 40<sup>000</sup> to 1 inch

13<sup>th</sup> Stand. P. N.



Survey Design	By whom sur.	Date of Contn.	Ant. of surv.	When surveyed
13 <sup>th</sup> Guide M. W.	W. H. Proctor	July 22, 1882	24 — —	Aug 21-24, 1883

I hereby certify, that the above diagram of the 13<sup>th</sup> Guide Mer. W. in Townships 49, 50, 51 & 52 N; betw. Ranges 104 & 105 W. 6<sup>th</sup> P. M. W. Ter. is strictly conformable to the field notes of the survey thereof on file in this office, which have been examined and approved.  
 Surveyor General's Office,  
 Cheyenne, Wyoming  
 Jan<sup>y</sup> 31<sup>st</sup> 1884.

*Edw. C. Davis*  
 Surv. Genl.

## T. 49 N., R. 105 W., Sixth Principal Meridian, Wyoming, Homestead Entry Survey Links

Plat Accession Number(s)	Year(s) of Survey	
		Homestead Entry Survey No. 100 (Section 17)
5259	1914	<a href="https://www.wy.blm.gov/cadastral/homesteads/100-149/hes100.pdf">https://www.wy.blm.gov/cadastral/homesteads/100-149/hes100.pdf</a>
		Homestead Entry Survey No. 171 (Section 30)
5312	1917	<a href="https://www.wy.blm.gov/cadastral/homesteads/150-199/hes171.pdf">https://www.wy.blm.gov/cadastral/homesteads/150-199/hes171.pdf</a>
		Homestead Entry Survey No. 253 (Section 19)
5382	1930	<a href="https://www.wy.blm.gov/cadastral/homesteads/200-255/hes253.pdf">https://www.wy.blm.gov/cadastral/homesteads/200-255/hes253.pdf</a>