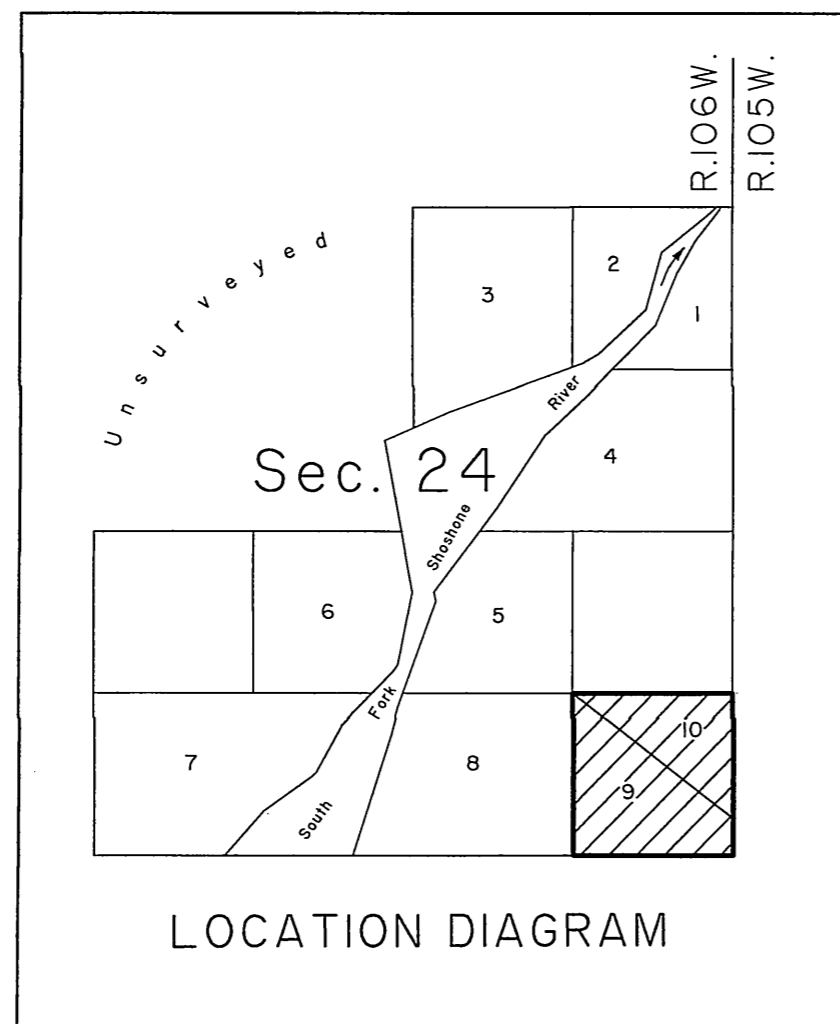


## T. 49 N., R. 106 W., Sixth Principal Meridian, Wyoming, Field Note Links

Plat Accession Number(s)	Year(s) of Survey	
		Township Subdivision Plats
7991	1991	<a href="https://www.wy.blm.gov/cadastral/countyplats/park/fieldnotes/t49nr106w_gp550fn.pdf">https://www.wy.blm.gov/cadastral/countyplats/park/fieldnotes/t49nr106w_gp550fn.pdf</a>
7914	1986	<a href="https://www.wy.blm.gov/cadastral/countyplats/park/fieldnotes/t49nr106w_gp472fn.pdf">https://www.wy.blm.gov/cadastral/countyplats/park/fieldnotes/t49nr106w_gp472fn.pdf</a>
4842	1904	<a href="https://www.wy.blm.gov/cadastral/countyplats/park/fieldnotes/t49nr106w_c292fn.pdf">https://www.wy.blm.gov/cadastral/countyplats/park/fieldnotes/t49nr106w_c292fn.pdf</a>
		Township Exterior Plats
4832	1904	<a href="https://www.wy.blm.gov/cadastral/countyplats/park/fieldnotes/ext2889.pdf">https://www.wy.blm.gov/cadastral/countyplats/park/fieldnotes/ext2889.pdf</a>

TOWNSHIP 49 NORTH, RANGE 106 WEST, OF THE SIXTH PRINCIPAL MERIDIAN, WYOMING.

SUPPLEMENTAL PLAT



This plat showing the subdivision of the SE1/4SE1/4, Section 24, into Lots 9 and 10, Sec. 24, is based on the BLM plat accepted August 14, 1991, and on a survey executed under state authority by Paul A. Blough, Wyoming Professional Land Surveyor No. 2332. A plat of his survey, titled "PARCELS FOR LAND EXCHANGE," was recorded in the Park County Clerk's Office, on June 9, 2014, Document No. 2014-2758, Plat Cabinet M, Page 46.

Plat prepared by Joel T. Ebner, Cadastral Surveyor, beginning June 10, 2014 and completed June 12, 2014, pursuant to Special Instructions dated June 5, 2014, for Group No. 909, Wyoming.

LEGEND

- BLM monument, 2 1/2" diam. aluminum post with aluminum cap.
- Monument set by Paul A. Blough, L.S. 2332, 2 1/2" diam. aluminum post with aluminum cap.
- Monument set by Donald J. Livingston, L.S. 647, 2 1/2" diam. iron post with brass cap.
- BLM monument searched for, not found and not reestablished during survey performed by Paul A. Blough, L.S. 2332.

Note: For more detailed descriptions of the monumentation refer to Corner Records filed in the Park County Clerk's Office by Paul A. Blough, L.S. 2332.

UNITED STATES DEPARTMENT OF THE INTERIOR  
BUREAU OF LAND MANAGEMENT

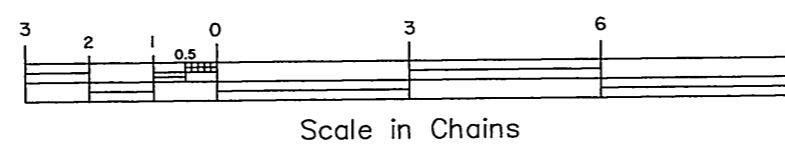
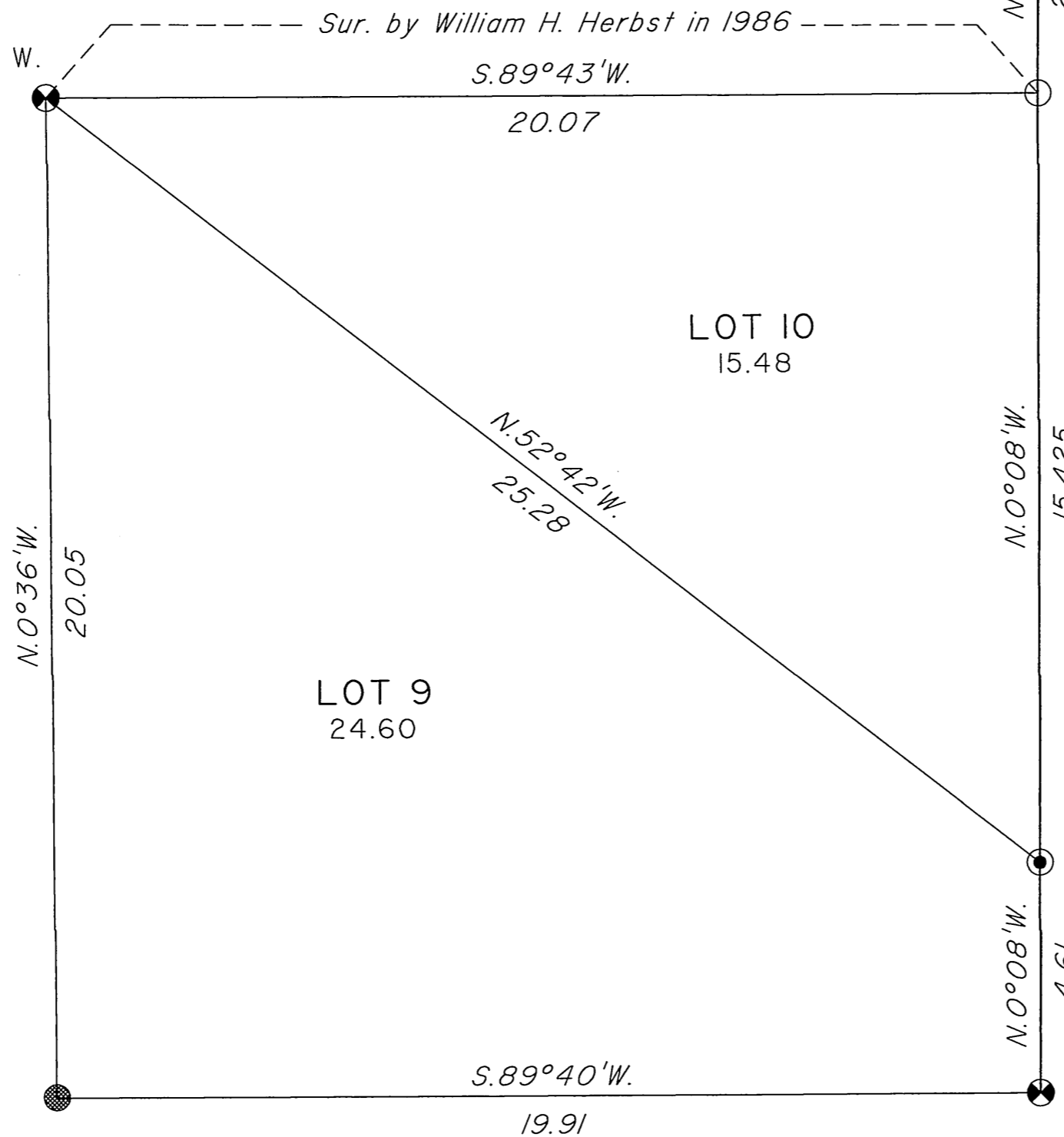
Cheyenne, Wyoming June 17, 2014

This plat, showing amended lottings, is based upon the official records and state authority survey records and, having been correctly prepared in accordance with the regulations of this Bureau, is hereby accepted.

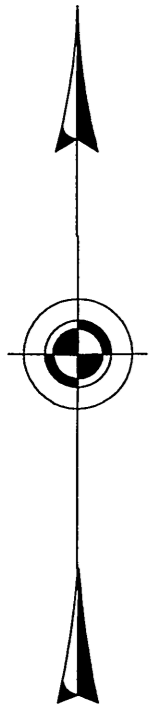
For the Director

John P. Lee  
Chief Cadastral Surveyor for Wyoming

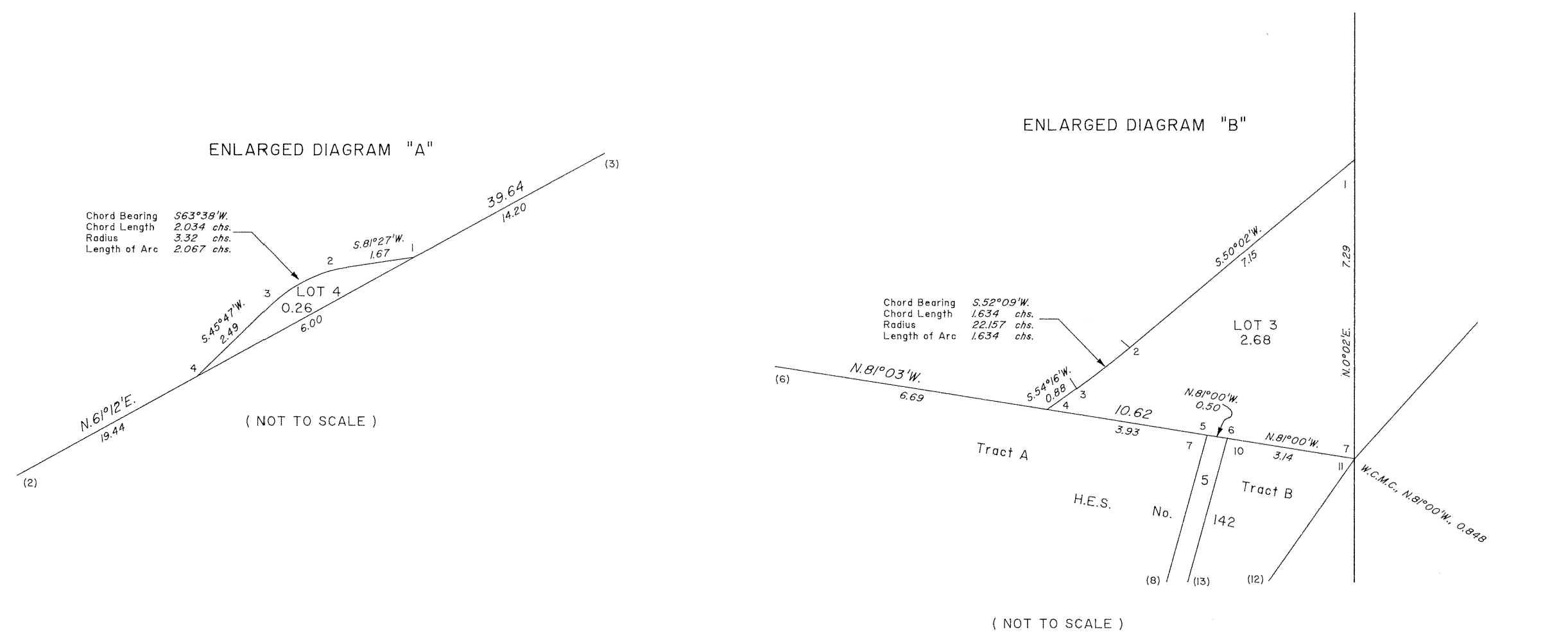
Lat. 44°11'51.034" N.  
Long. 109°33'31.082" W.  
NAD 83 (CORS 96)



Scale in Chains



TOWNSHIP 49 NORTH, RANGE 106 WEST, OF THE SIXTH PRINCIPAL MERIDIAN, WYOMING.  
DEPENDENT RESURVEY AND SURVEY



LOT 6, LINE 4-5  
Chord Bearing N.53°10'E  
Chord Length 4.18 chs.  
Radius 14.668 chs.  
Length of Arc 4.194 chs.

TRACT 37, LINE 7-8  
Chord Bearing N.27°34'E  
Chord Length 3.64 chs.  
Radius 7.66 chs.  
Length of Arc 3.68 chs.

TRACT 37, LINE 9-10  
Chord Bearing N.27°29'E  
Chord Length 5.16 chs.  
Radius 12.225 chs.  
Length of Arc 5.20 chs.

TRACT 37, LINE 12-13  
Chord Bearing N.27°55'E  
Chord Length 6.88 chs.  
Radius 11.867 chs.  
Length of Arc 6.98 chs.

A history of surveys is contained in the field notes.

This plat represents the dependent resurvey of portions of the Twelfth Standard Parallel North, through R. 106 W., subdivisional lines and Homestead Entry Survey Nos. 93 and 142, Tracts A and B designed to restore the corners in their true original locations according to the best available evidence, and the metes and bounds surveys of Lots 3 and 4, Section 34, Lot 6, Section 35 and Tract 37, T. 49 N., R. 106 W., Sixth Principal Meridian, Wyoming.

Except as indicated hereon, the lottings and areas are as shown on the plats approved March 23, 1905, November 22, 1915 and September 13, 1916.

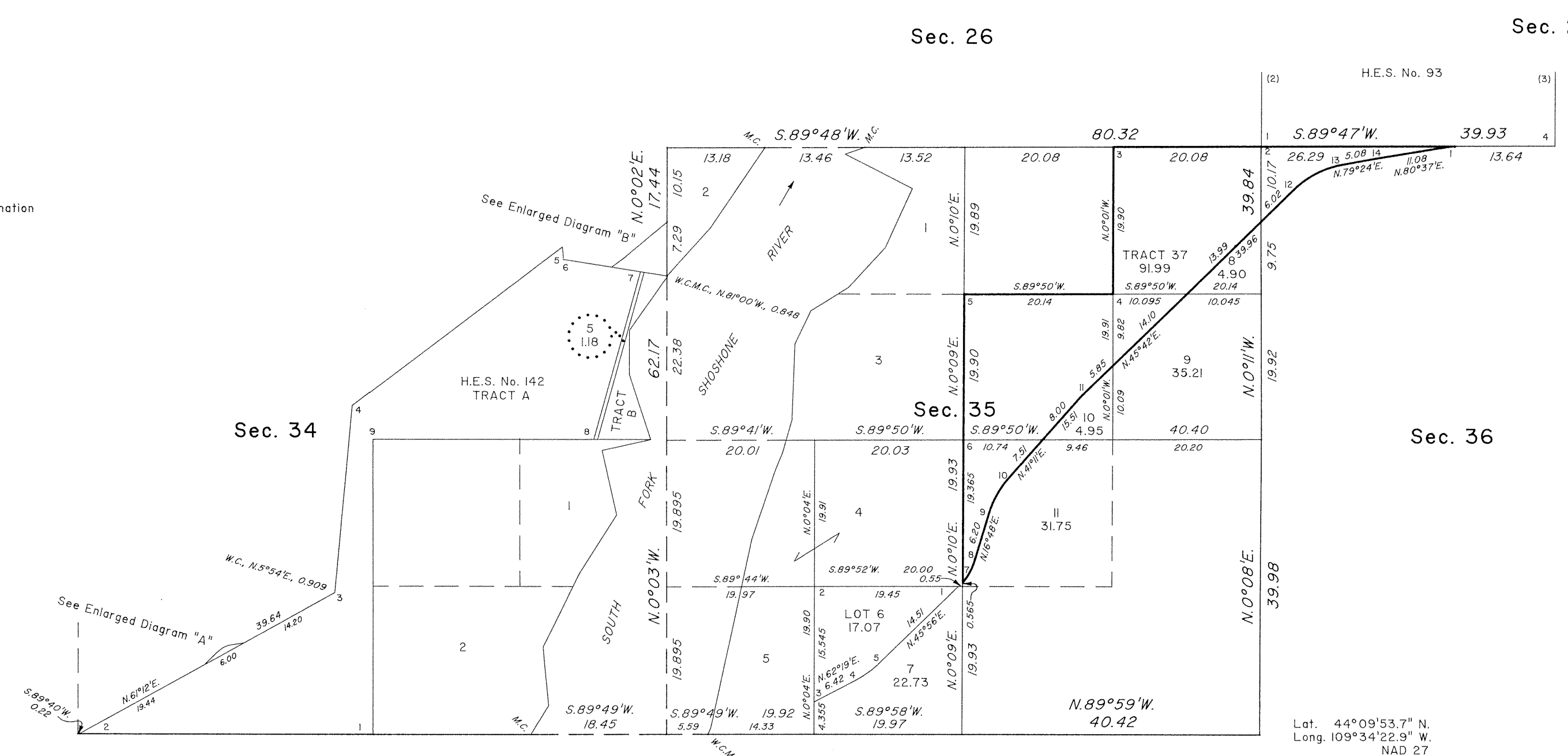
Survey executed by James D. Clafin, Cadastral Surveyor, beginning August 11, 1991, and completed August 26, 1991, pursuant to Special Instructions dated August 6, 1991, for Group No. 550, Wyoming.

UNITED STATES DEPARTMENT OF THE INTERIOR  
BUREAU OF LAND MANAGEMENT

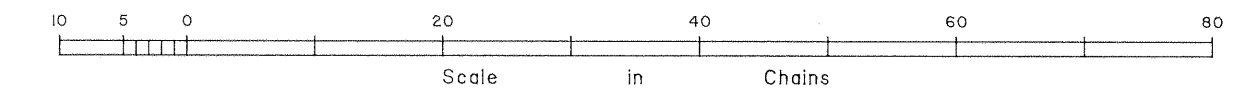
Cheyenne, Wyoming March 2, 1994

This plat is strictly conformable to the approved field notes, and the survey, having been correctly executed in accordance with the requirements of law and the regulations of this Bureau, is hereby accepted.

For the Director  
*John P. Lee*  
Chief Cadastral Surveyor for Wyoming



TWELFTH STANDARD PARALLEL NORTH



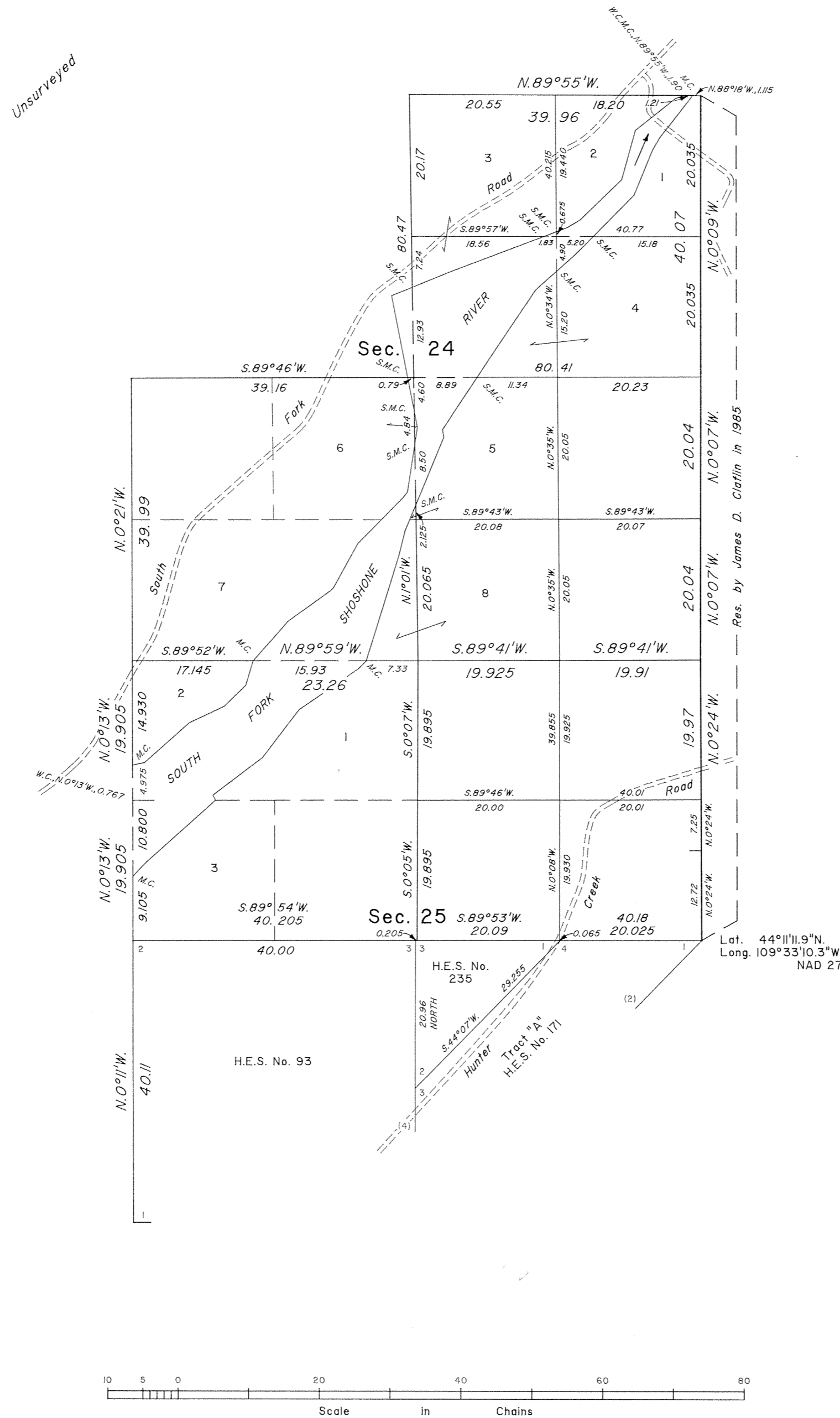
W.H.B.

TOWNSHIP 49 NORTH, RANGE 106 WEST, OF THE SIXTH PRINCIPAL MERIDIAN, WYOMING.  
DEPENDENT RESURVEY AND SUBDIVISION OF SECTIONS

Sec. 13

Sec. 23

Sec. 26



A history of surveys is contained in the field notes.

This plat represents the dependent resurvey of a portion of the subdivisional lines and portions of Homestead Entry Survey Nos. 93 and 235 designed to restore the corners in their true original locations according to the best available evidence, and the subdivision of certain sections, T. 49 N., R. 106 W., Sixth Principal Meridian, Wyoming.

The lottings and areas are as shown on the survey plat approved March 23, 1905, and Homestead Entry Survey plats approved November 22, 1915, September 13, 1916, September 21, 1918, and May 24, 1921.

Survey executed by William H. Herbst, Cadastral Surveyor, beginning June 29, 1986, and completed August 6, 1986, pursuant to Special Instructions dated May 29, 1985, for Group No. 472, Wyoming.

Lat. 44°11'11.9"N.  
Long. 109°33'10.3"W.  
NAD 27

UNITED STATES DEPARTMENT OF THE INTERIOR  
BUREAU OF LAND MANAGEMENT

Cheyenne, Wyoming August 14, 1991

This plat is strictly conformable to the approved field notes, and the survey, having been correctly executed in accordance with the requirements of law and the regulations of this Bureau, is hereby accepted.

For the Director  
*John P. Lee*  
Chief Cadastral Surveyor for Wyoming

OFFICIALLY FILED: September 23, 1991



# TOWNSHIP EXTERIORS.

Scale: 1 inch ≈ 160 chains.

This Plat  
of  
a part of the 12<sup>th</sup> Standard Parallel North through R.106W,  
and parts of the North and West boundaries of T.49N, R.105W;  
the Resurvey of  
the 13<sup>th</sup> Guide Meridian West through Tps. 49, 50, 51 and 52 N.;  
west of the 6<sup>th</sup> Principal Meridian,  
Wyoming,  
is strictly conformable to the field notes of the survey thereof  
by  
William M. Gilcrest, U.S.D.S.,  
under his  
Contract No. 292,  
dated June 29, 1904,  
which have been examined, approved and filed in this office.  
U.S. Surv. Gen's Office,  
Cheyenne, Wyoming,  
March 23, 1905

*Alfred P. Hansen*  
U.S. Surv. Gen.

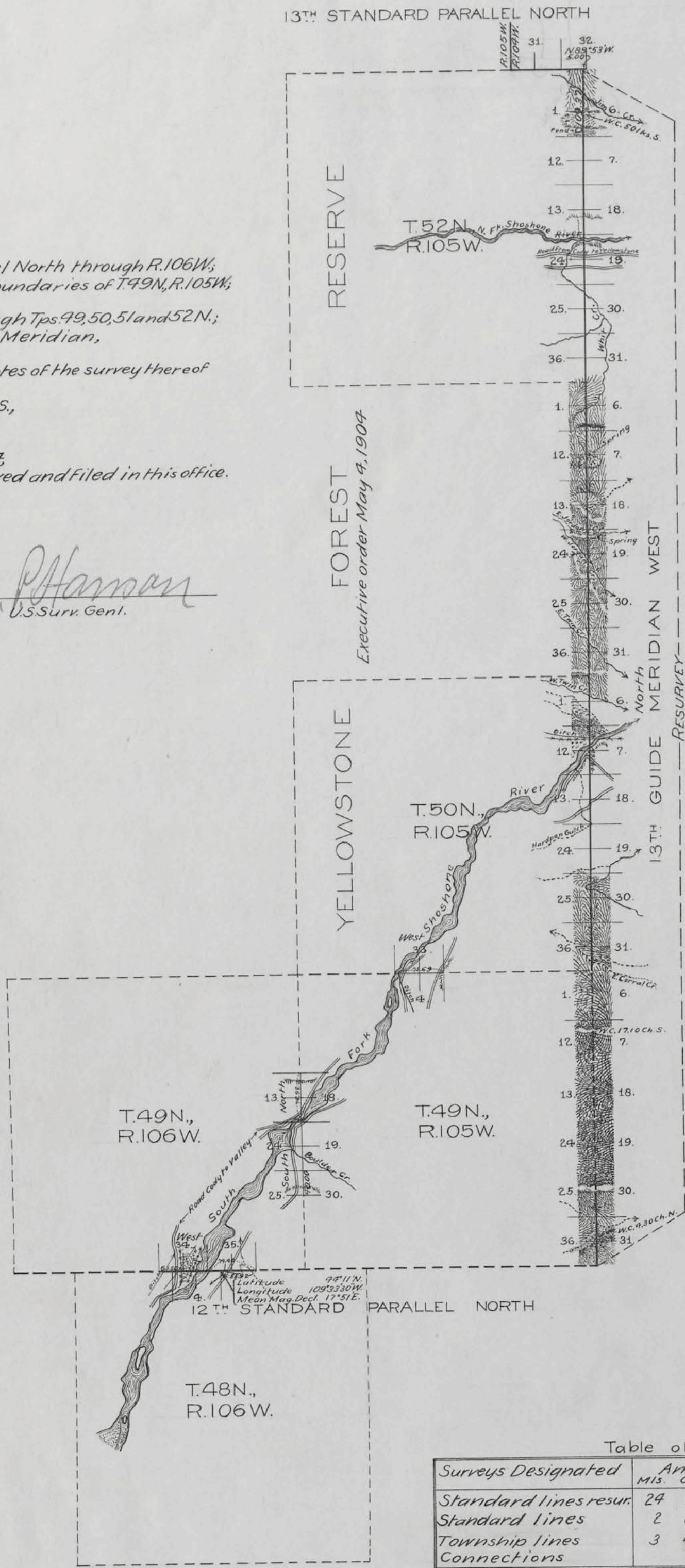


Table of Mileage.

Surveys Designated	Amount		When Surveyed
	Mis.	Lks.	
Standard lines resur.	24 29	37	Apr. 18-June 12, 1904
Standard lines	2 00	00	May 18, 1904
Township lines	3 40	00	May 11-16, 1904
Connections	5 00	00	June 12, 1904

*Triplicate plat forwarded Apr. 10, 1905.  
Survey accepted by the Hon. Commissioner  
in his letter "E", dated Apr. 3, 1905.*

## T. 49 N., R. 106 W., Sixth Principal Meridian, Wyoming, Homestead Entry Survey Links

Plat Accession Number(s)	Year(s) of Survey	
		Homestead Entry Survey No. 93 (Section 25)
5252	1914	<a href="https://www.wy.blm.gov/cadastral/homesteads/050-099/hes93.pdf">https://www.wy.blm.gov/cadastral/homesteads/050-099/hes93.pdf</a>
		Homestead Entry Survey No. 142 (Section 34)
5291	1915	<a href="https://www.wy.blm.gov/cadastral/homesteads/100-149/hes142.pdf">https://www.wy.blm.gov/cadastral/homesteads/100-149/hes142.pdf</a>
		Homestead Entry Survey No. 171 (Section 25)
5312	1917	<a href="https://www.wy.blm.gov/cadastral/homesteads/150-199/hes171.pdf">https://www.wy.blm.gov/cadastral/homesteads/150-199/hes171.pdf</a>
		Homestead Entry Survey No. 235 (Section 25)
5368	1920	<a href="https://www.wy.blm.gov/cadastral/homesteads/200-255/hes235.pdf">https://www.wy.blm.gov/cadastral/homesteads/200-255/hes235.pdf</a>