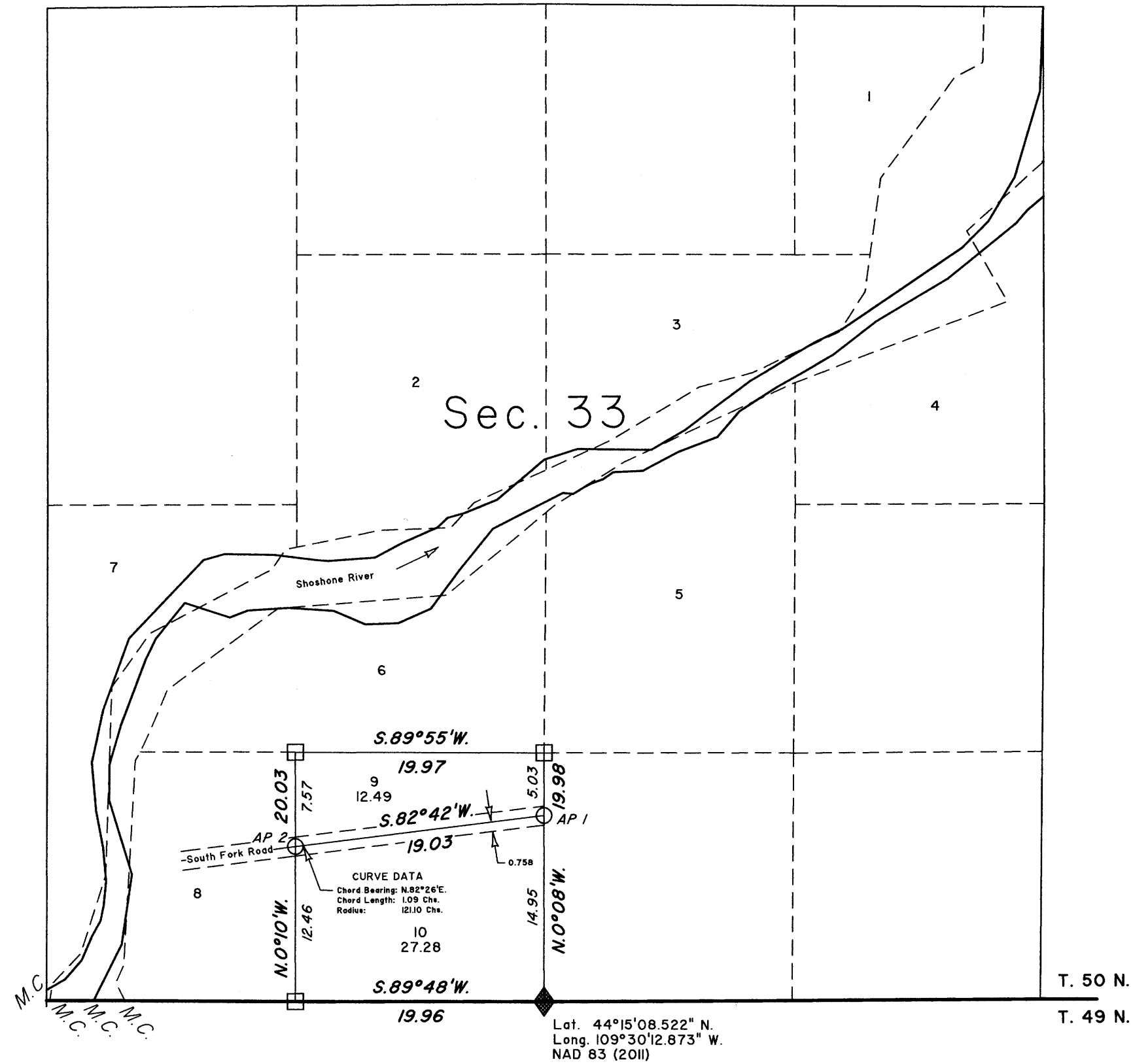


T. 50 N., R. 105 W., Sixth Principal Meridian, Wyoming, Field Note Links

Plat Accession Number(s)	Year(s) of Survey	
Township Subdivision Plats		
7996	1988	https://www.wy.blm.gov/cadastral/countyplats/park/fieldnotes/t50nr105w_gp590fn.pdf
7988	1991	https://www.wy.blm.gov/cadastral/countyplats/park/fieldnotes/t50nr105w_gp550fn.pdf
6356	1942	https://www.wy.blm.gov/cadastral/countyplats/park/fieldnotes/t50nr105w_gp176fn.pdf
4836	1918	https://www.wy.blm.gov/cadastral/countyplats/park/fieldnotes/t50nr105w_gp048fn.pdf
4835	1913	https://www.wy.blm.gov/cadastral/countyplats/park/fieldnotes/t50nr105w_gp010fn.pdf
4834	1904	https://www.wy.blm.gov/cadastral/countyplats/park/fieldnotes/t50nr105w_c292fn.pdf
Township Exterior Plats		
4253	1908	https://www.wy.blm.gov/cadastral/countyplats/park/fieldnotes/ext2456.pdf
4832	1904	https://www.wy.blm.gov/cadastral/countyplats/park/fieldnotes/ext2889.pdf
3026	1883	https://www.wy.blm.gov/cadastral/countyplats/park/fieldnotes/ext3026.pdf
Yellowstone National Park Boundary		
5963	1893	https://www.wy.blm.gov/cadastral/countyplats/fremont/fieldnotes/ynp_0013fn.pdf

TOWNSHIP 50 NORTH, RANGE 105 WEST, OF THE SIXTH PRINCIPAL MERIDIAN, WYOMING.

SUPPLEMENTAL PLAT



This plat showing the subdivision of the SE1/4SW1/4, section 33 into lots 9 and 10, section 33, Township 50 North, Range 105 West, Sixth Principal Meridian, Wyoming, is based on a survey executed under state authority in June 2019 by Russell B. Blough, Wyoming Professional Land Surveyor No. 10014. A plat of this survey, titled "UNITED STATES FOREST SERVICE PARCEL FOR LAND EXCHANGE" was recorded in the Park County Clerk's Office on November 6, 2019.

Plat prepared by Jeremy D. Davis, Cadastral Surveyor, beginning March 23, 2020 and completed March 24, 2020, pursuant to special instructions dated March 23, 2020, for Group No. 1023, Wyoming.

LEGEND

- ◆ BLM monument, 2½" diam. aluminum post with aluminum cap
- 2½" diam. aluminum cap attached to an iron post, set by Thomas Hopka Wyoming Professional Surveyor No. 355.
- 2½" diam. aluminum post with aluminum cap attached, set by Russell B. Blough Wyoming Professional Surveyor No. 10014.

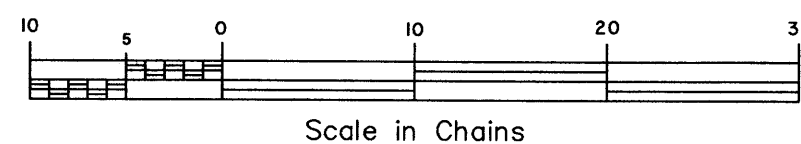
UNITED STATES DEPARTMENT OF THE INTERIOR
BUREAU OF LAND MANAGEMENT

Cheyenne, Wyoming March 25, 2020

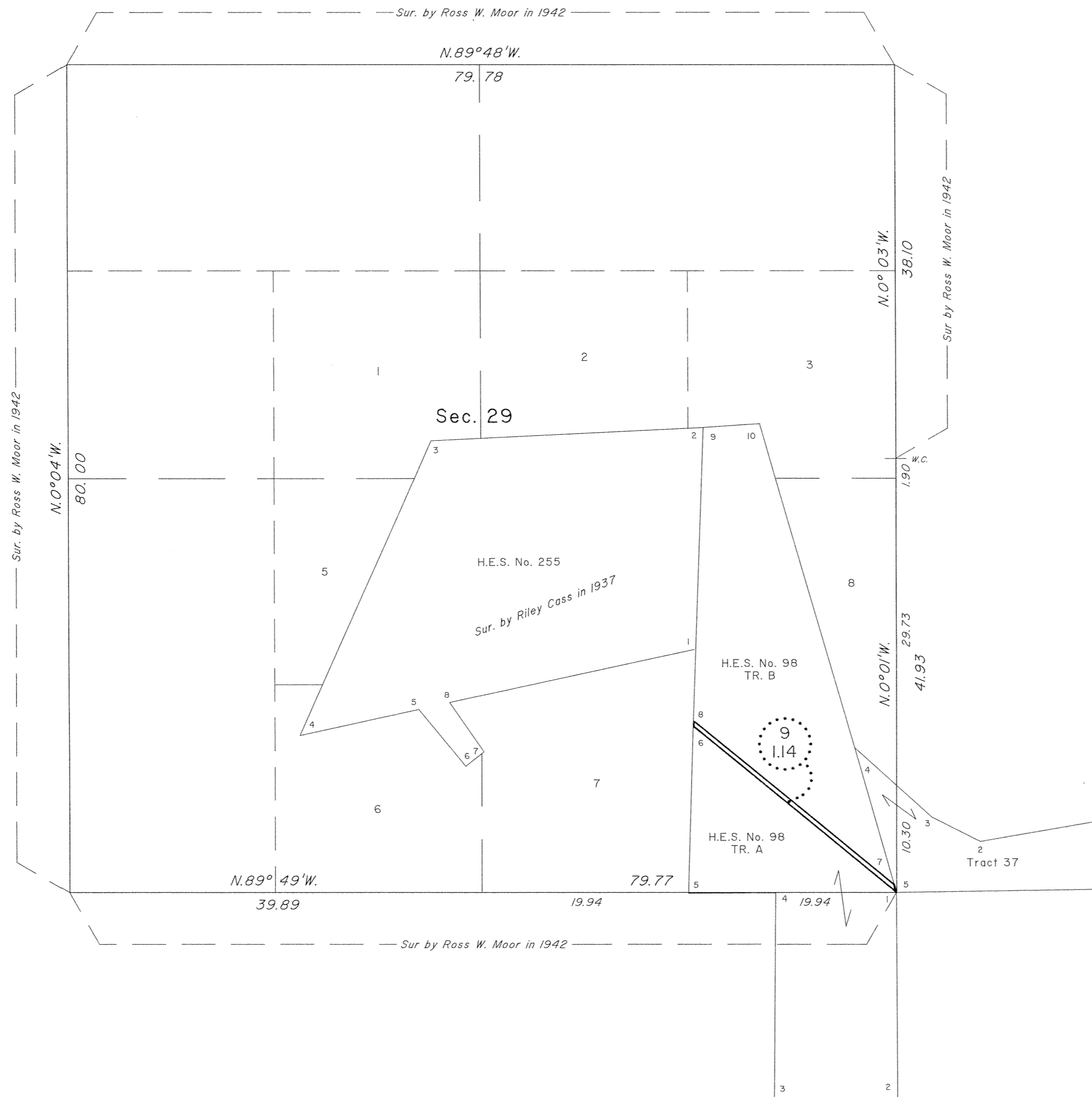
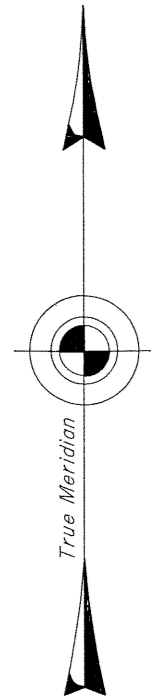
This plat, showing new lottings, is based upon official and state authority survey records and, having been correctly prepared in accordance with the regulations of this Bureau, is hereby accepted.

For the Director

Sonja S. Sparks
Chief Cadastral Surveyor for Wyoming



TOWNSHIP 50 NORTH, RANGE 105 WEST, OF THE SIXTH PRINCIPAL MERIDIAN, WYOMING.
SUPPLEMENTAL PLAT



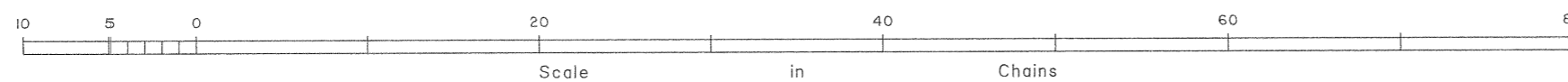
This plat showing Lot 9, Section 29, T. 50 N., R. 105 W., Sixth Principal Meridian, Wyoming, is based upon the H. E. S. plat approved September 9, 1915, and the plats approved May 16, 1945 and March 2, 1994.

UNITED STATES DEPARTMENT OF THE INTERIOR
BUREAU OF LAND MANAGEMENT

Cheyenne, Wyoming November 15, 1996

This plat, showing amended lottings, is based upon the official records and, having been correctly prepared in accordance with the regulations of this Bureau, is hereby accepted.

For the Director
John P. Lee
Chief Cadastral Surveyor for Wyoming

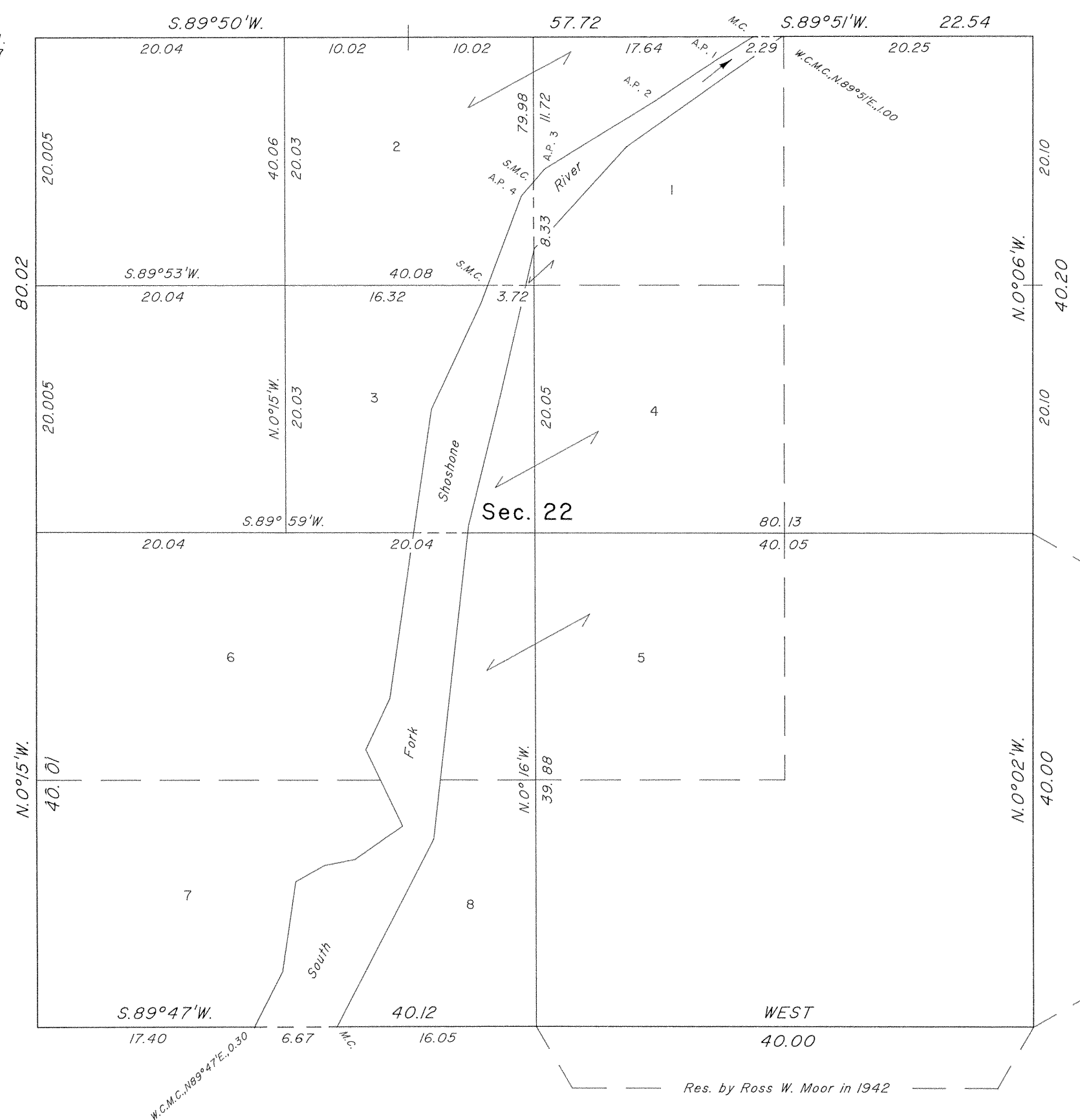


TOWNSHIP 50 NORTH, RANGE 105 WEST, OF THE SIXTH PRINCIPAL MERIDIAN, WYOMING.

DEPENDENT RESURVEY AND SUBDIVISION OF SECTION 22

Sec. 15

Lat. 44°17'45.13"N.
Long. 109°29'34.52"W.
NAD 27



A history of surveys is contained in the field notes.

This plat represents the dependent resurvey of a portion of the subdivisional lines and adjusted meander lines designed to restore the corners in their true original locations according to the best available evidence, and the subdivision of Section 22, T. 50 N., R. 105 W., Sixth Principal Meridian, Wyoming.

The lottings and areas are as shown on the plat approved March 23, 1905.

Survey executed by Joel T. Ebner, Cadastral Surveyor, beginning March 24, 1994, and completed April 6, 1994, pursuant to Special Instructions dated March 14, 1994, for Group No. 590, Wyoming.

UNITED STATES DEPARTMENT OF THE INTERIOR
BUREAU OF LAND MANAGEMENT

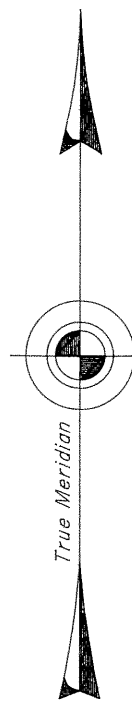
Cheyenne, Wyoming June 29, 1994

This plat is strictly conformable to the approved field notes, and the survey, having been correctly executed in accordance with the requirements of law and the regulations of this Bureau, is hereby accepted.

For the Director

John P. Lee
Chief Cadastral Surveyor for Wyoming

OFFICIALLY FILED: August 16, 1994



Mean magnetic declination
14°E.

Sec. 21

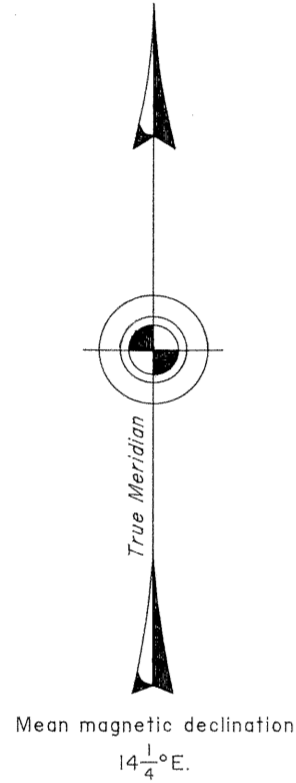
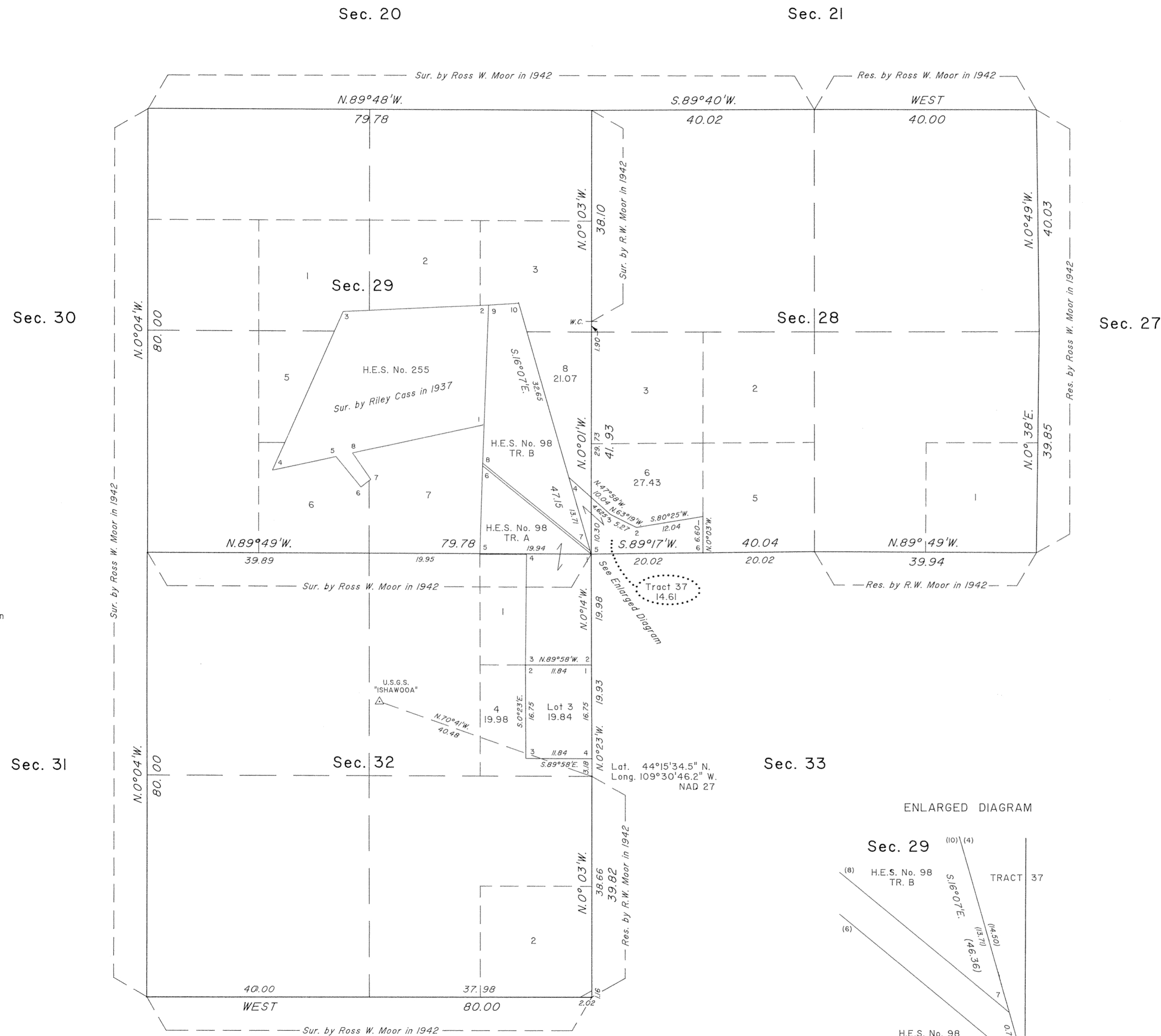
Sec. 23

Sec. 27



gpc

TOWNSHIP 50 NORTH, RANGE 105 WEST, OF THE SIXTH PRINCIPAL MERIDIAN, WYOMING.
DEPENDENT RESURVEY AND METES AND BOUNDS SURVEYS



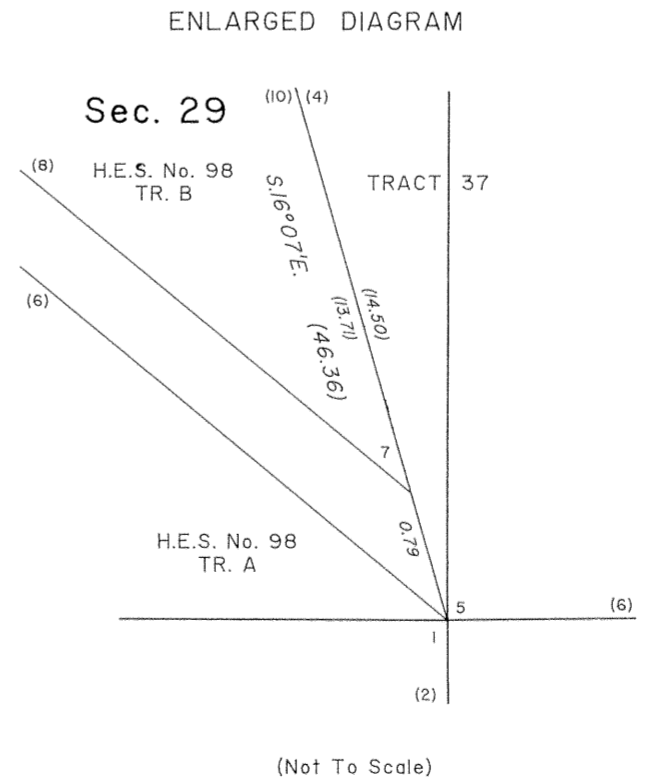
A history of surveys in contained in the field notes.

This plat represents the dependent resurvey of portions of the subdivisional lines and Homestead Entry Survey No. 98 designed to restore the corners in their true original locations according to the best available evidence, the metes and bounds survey of Lot 3, Section 32, and the metes and bounds survey of Tract 37, T. 50 N., R. 105 W., Sixth Principal Meridian, Wyoming.

Except as indicated hereon, the lottings and areas are as shown on the plats approved March 23, 1905, September 9, 1915, and October 24, 1938, and the plat approved December 19, 1944, accepted May 16, 1945.

Survey executed by James D. Claflin, Cadastral Surveyor, beginning August 22, 1991, and completed August 24, 1991, pursuant to Special Instructions dated August 6, 1991, for Group No. 550, Wyoming.

Sec. 33

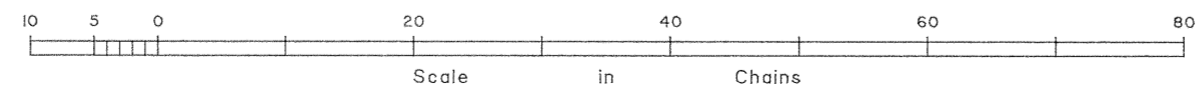


UNITED STATES DEPARTMENT OF THE INTERIOR
BUREAU OF LAND MANAGEMENT

Cheyenne, Wyoming March 2, 1994

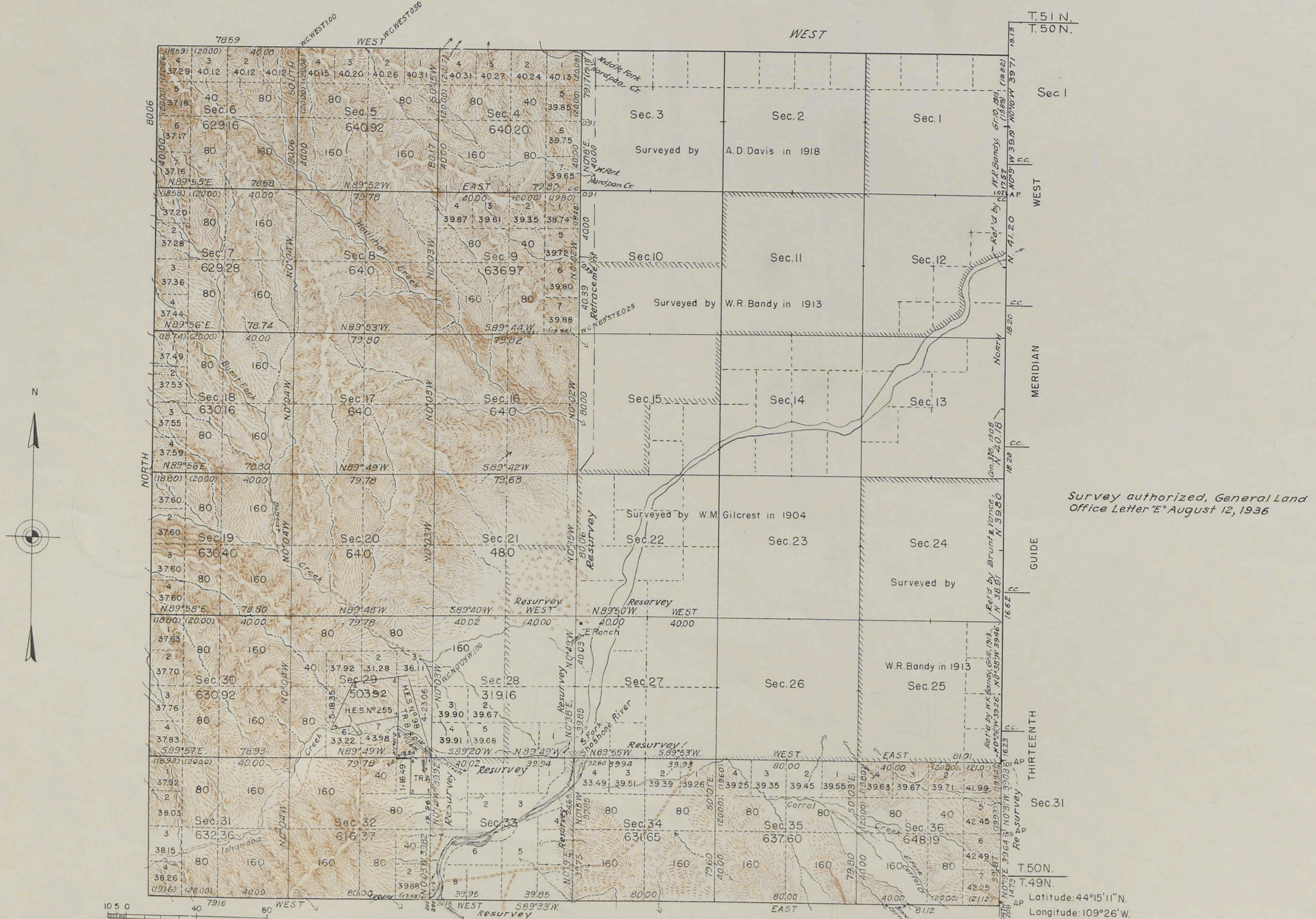
This plat is strictly conformable to the approved field notes, and the survey, having been correctly executed in accordance with the requirements of law and the regulations of this Bureau, is hereby accepted.

For the Director
John P. Lee
Chief Cadastral Surveyor for Wyoming



2891

TOWNSHIP N°50 NORTH, RANGE N°105 WEST OF THE SIXTH PRINCIPAL MERIDIAN, WYOMING



Survey authorized, General Land Office Letter "E" August 12, 1936

Mean Magnetic Declination, 17°04' E. Scale: 1 inch = 40 Chains.

Area Surveyed	12,097.26 Acres.
Area H.E. Surveys (inc Row)	159.59 Acres.
Total Area Surveyed	12,256.85 Acres.

UNITED STATES DEPARTMENT OF THE INTERIOR
GENERAL LAND OFFICE

LINES DESIGNATED	BY WHOM SURVEYED	GROUP No.	DATE OF SPECIAL INSTRUCTIONS	WHEN SURVEYED	
				BEGUN	COMPLETED
W. & S. Exterior Subdivisional N. Exterior	Ross W. Moor	176	December 22, 1939	June 8, 1942	August 5, 1942
	"	173	March 10, 1939	Aug. 19, 1939	Sept. 23, 1939

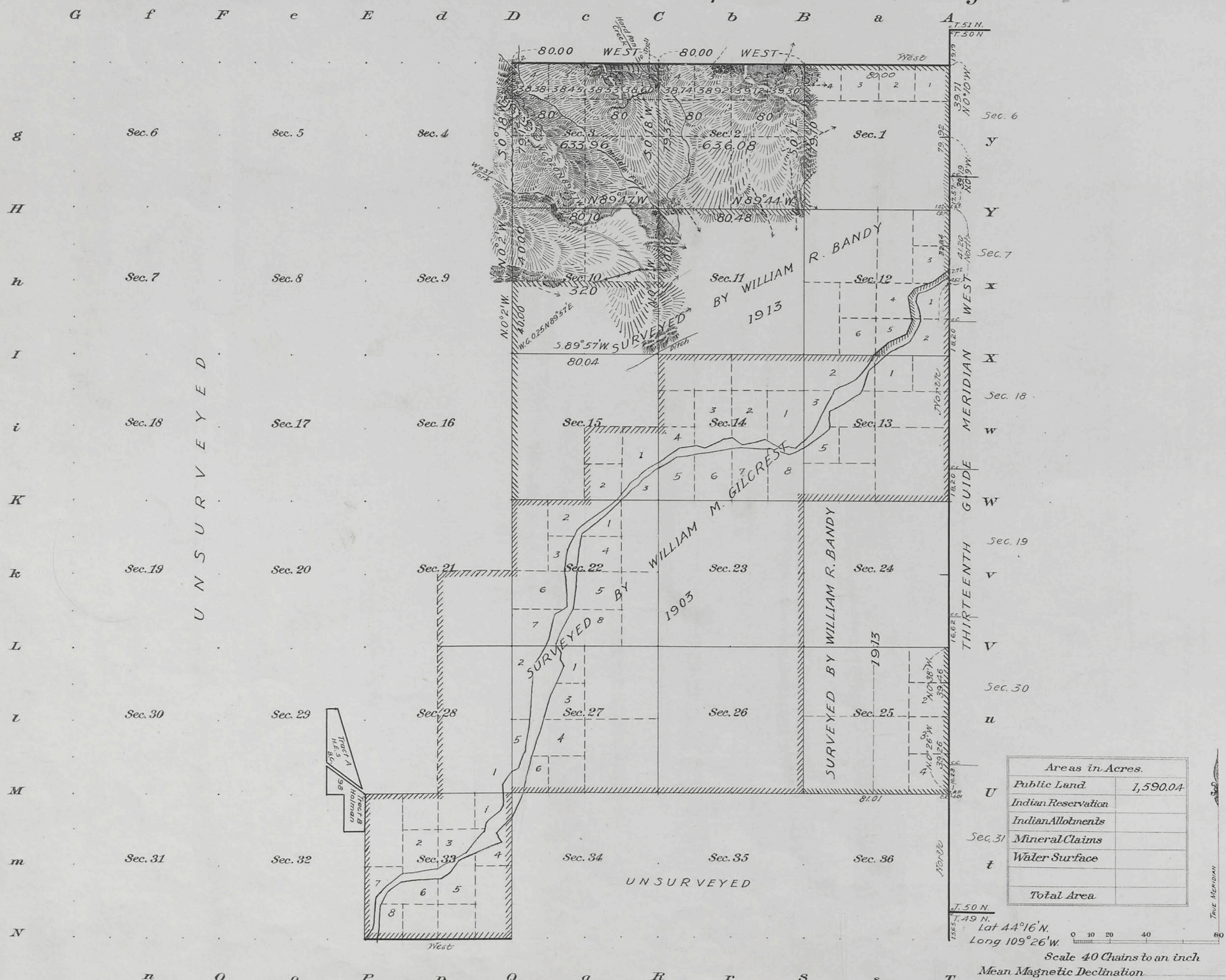
Denver, Colorado, Dec. 19, 1944
This plat of Township No. 50 North, Range No. 105 West, of the Sixth Principal Meridian, Wyoming, is strictly conformable to the field notes of the survey thereof which have been examined and approved.

Washington, D.C., MAY 16, 1945
The survey represented by this plat having been correctly executed in accordance with the requirements of law and the regulations of this office, is hereby accepted.

W. H. Horton
Supervisor of Surveys

Jed David Wolfson
Assistant Commissioner.

Township No 50 North Range No 105 West of the Sixth Principal Meridian, Wyoming



Areas in Acres.	
Public Land	1,590.04
Indian Reservation	
Indian Allotments	
Mineral Claims	
Water Surface	
Total Area	

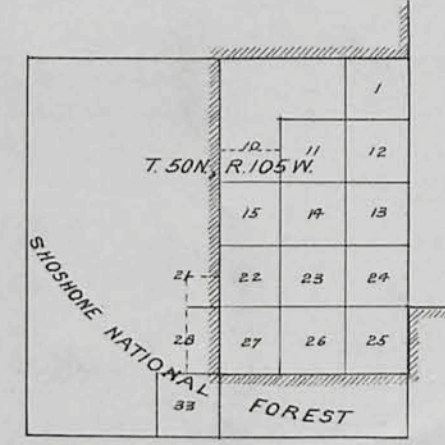
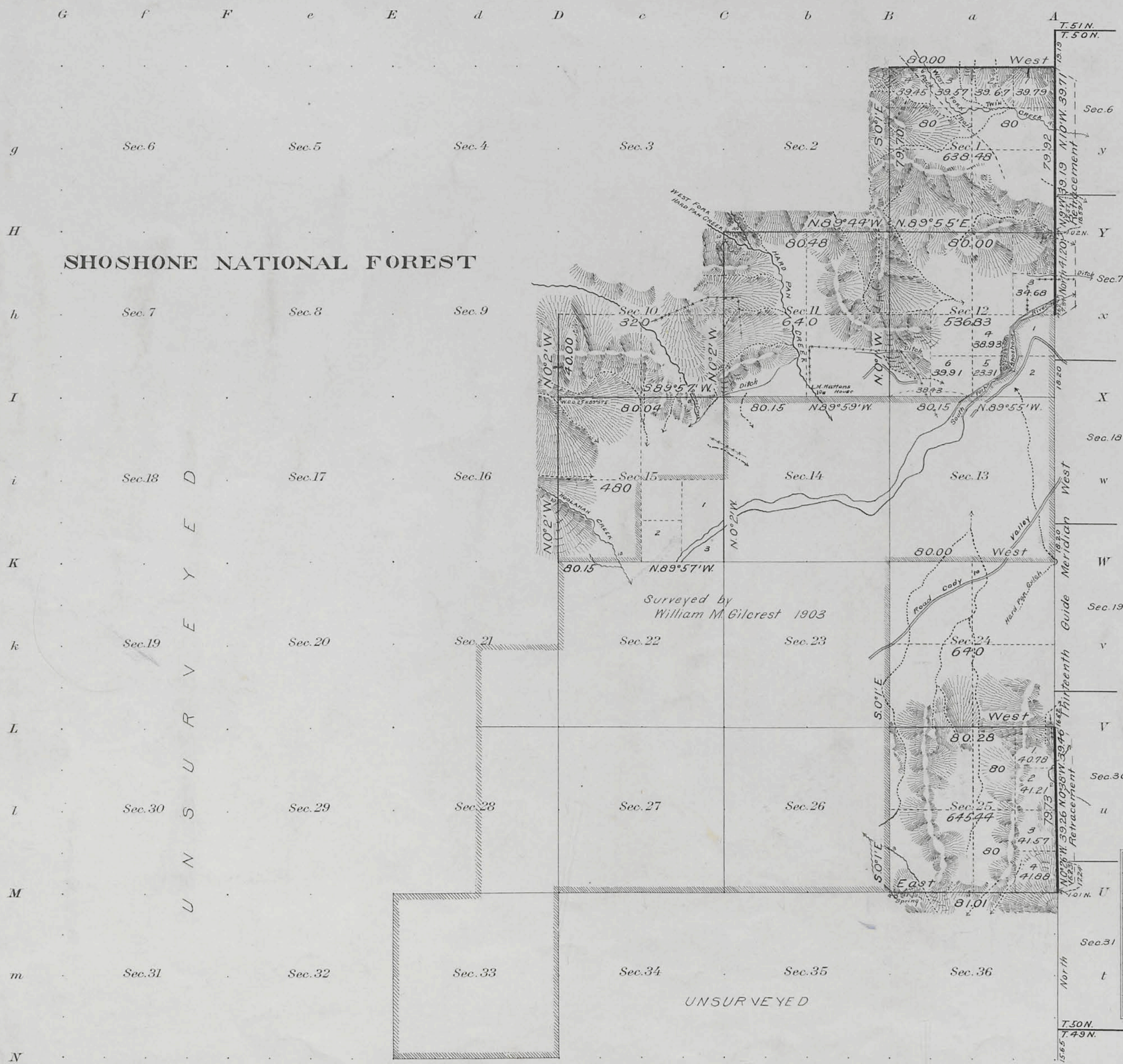
Surveys Designated.	By Whom Surveyed.	Group No.	Date	Amount of Surveys			When Surveyed.	
				Mls.	chs.	lks.	Began.	Completed.
North Bdy. Subdivisions	A. D. Davis	48	Mar. 26, 1918	2	00	00	Sept. 25, 1918	Sept. 25, 1918
Subdivisions	" " "	"	" " "	3	38	59	" 21 "	" 26 "
Subdivisions	William R. Bandy	10	May 2, 1913	2	40	18	June 12, 1913	June 16, 1913

The above map of Township No. 50 North Range No 105 West of the Sixth Principal Meridian Wyoming is strictly conformable to the field notes of the survey thereof on file in this office, which have been examined and approved.

U. S. Surveyor General's Office,
Cheyenne, Wyoming, November 5, 1919

Charles J. Becker
Surveyor General.

Fractional Township N° 50 North, Range N° 105 West of the Sixth Principal Meridian, Wyoming



Areas in Acres	
Public Land	3900.75
Indian Reservation	
Indian Allotments	
Mineral Claims	
Water Surface	
Total Area	3900.75

Scale 40 Chains to an inch
 Mean Magnetic Declination
 Latitude 44° 16' N
 Longitude 109° 26' W.

Surveys Designated	By Whom Surveyed	Group		Amount of Surveys			When Surveyed	
		No.	Date	Mls.	chs.	lks.	Began	Completed
Subdivisions	William R. Bandy	10	May 2, 1913	7	61	51	June 12, 1913	June 16, 1913
North Boundary	" "	"	" " "	1	00	00	June 13, 1913	June 13, 1913
Retracement	" "	"	" " "	2	38	32	June 13, 1913	June 16, 1913
East Boundary	" "	"	" " "	2	03		June 16, 1913	June 16, 1913
Connections	" "	"	" " "					

Fractional Township No. 50 North Range No. 105 West of the Sixth Principal Meridian Wyoming is strictly conformable to the field notes of the survey thereof on file in this office, which have been examined and approved

U.S. Surveyor General's Office,
 Cheyenne, Wyoming, March 28, 1914

Charles L. Seckes
 Surveyor General

2891-A

50-105

DIAGRAM
OF THE
N.E. & S. BOUNDARIES
OF THE
PUBLIC FOREST RESERVATION
AND THE
FRAC.E. BOUNDARY
OF THE
YELLOWSTONE NATIONAL PARK
IN
WYOMING

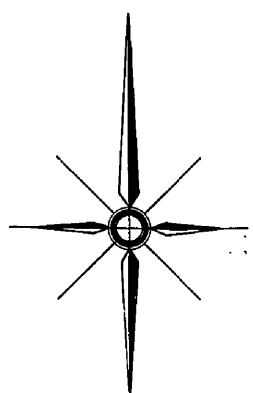
As surveyed by Philip M. Gallaher U.S. Deputy Surveyor Aug. 3rd to Oct. 22nd 1893, under his contract No. 263 dated Oct. 17, 1891.

Scale 1/2 in = 1 mile
 O indicates corners established
 + indicates proper points for corners but not established

I certify that the above diagram of the N.E. & S. Boundaries of the Public Forest Reservation and the Frac.E. Boundary of the Yellowstone National Park in Wyoming, is strictly conformable to the field notes of the survey thereof on file in this office which have been examined and approved.

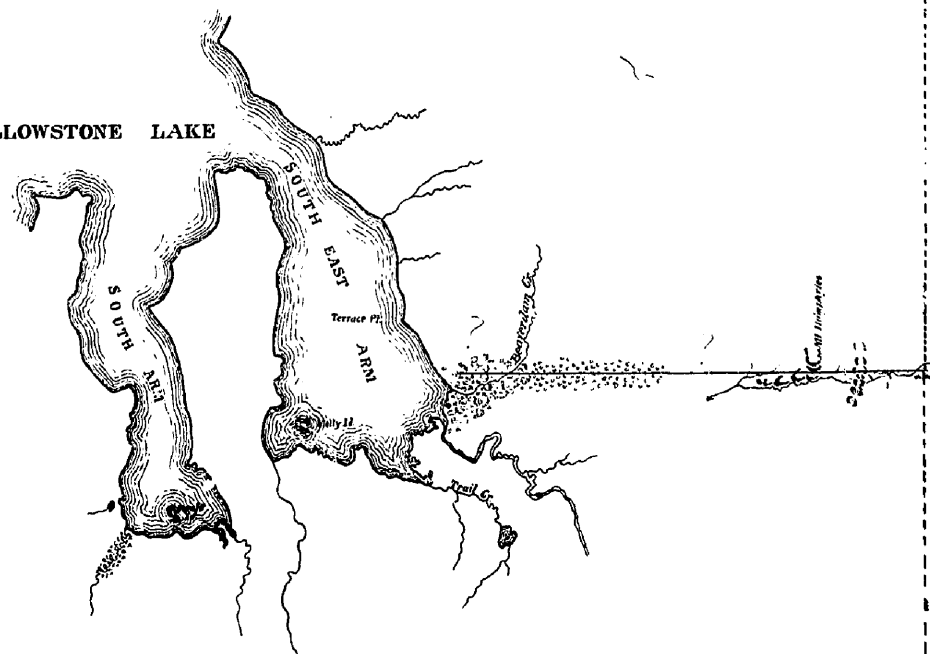
U.S. Sur. Gen's Office
 Helena Mont July 17, 1894.

Joseph H. Weil
 Sur. Gen.
 for Montana



YELLOWSTONE NATIONAL PARK

YELLOWSTONE LAKE



South Boundary Yellowstone National Park

PUBLIC

W Y O M I N G

RESERVATION

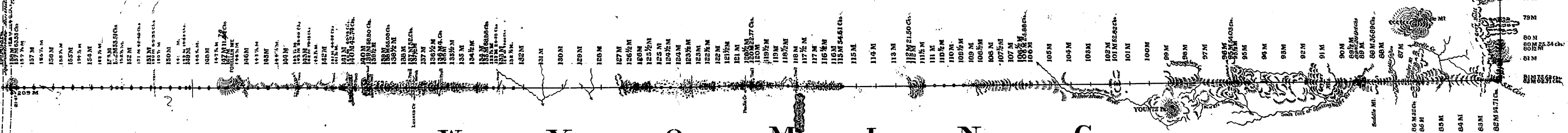
FOREST

13
 25M
26M
27M
28M
29M
30M
31M
32M
33M
34M
35M
36M
37M
38M
39M
40M
41M
42M
43M
44M
45M
46M
47M
48M
49M
50M
51M
52M
53M
54M
55M
56M
57M
58M
59M
60M
61M
62M
63M
64M
65M
66M
67M
68M
69M
70M
71M
72M
73M
74M
75M
76M
77M
78M
79M
80M
81M
82M
83M
84M
85M
86M
87M
88M
89M
90M
91M
92M
93M
94M
95M
96M
97M
98M
99M
100M

13

I D A H O

W



TOWNSHIP EXTERIORS.

Scale: 1 inch ≈ 160 chains.

This Plat
of
a part of the 12th Standard Parallel North through R.106W,
and parts of the North and West boundaries of T.49N, R.105W;
the Resurvey of
the 13th Guide Meridian West through Tps. 49, 50, 51 and 52 N.;
west of the 6th Principal Meridian,
Wyoming,
is strictly conformable to the field notes of the survey thereof
by
William M. Gilcrest, U.S.D.S.,
under his
Contract No. 292,
dated June 29, 1904,
which have been examined, approved and filed in this office.
U.S. Surv. Gen's Office,
Cheyenne, Wyoming,
March 23, 1905

Alfred P. Hansen
U.S. Surv. Gen.

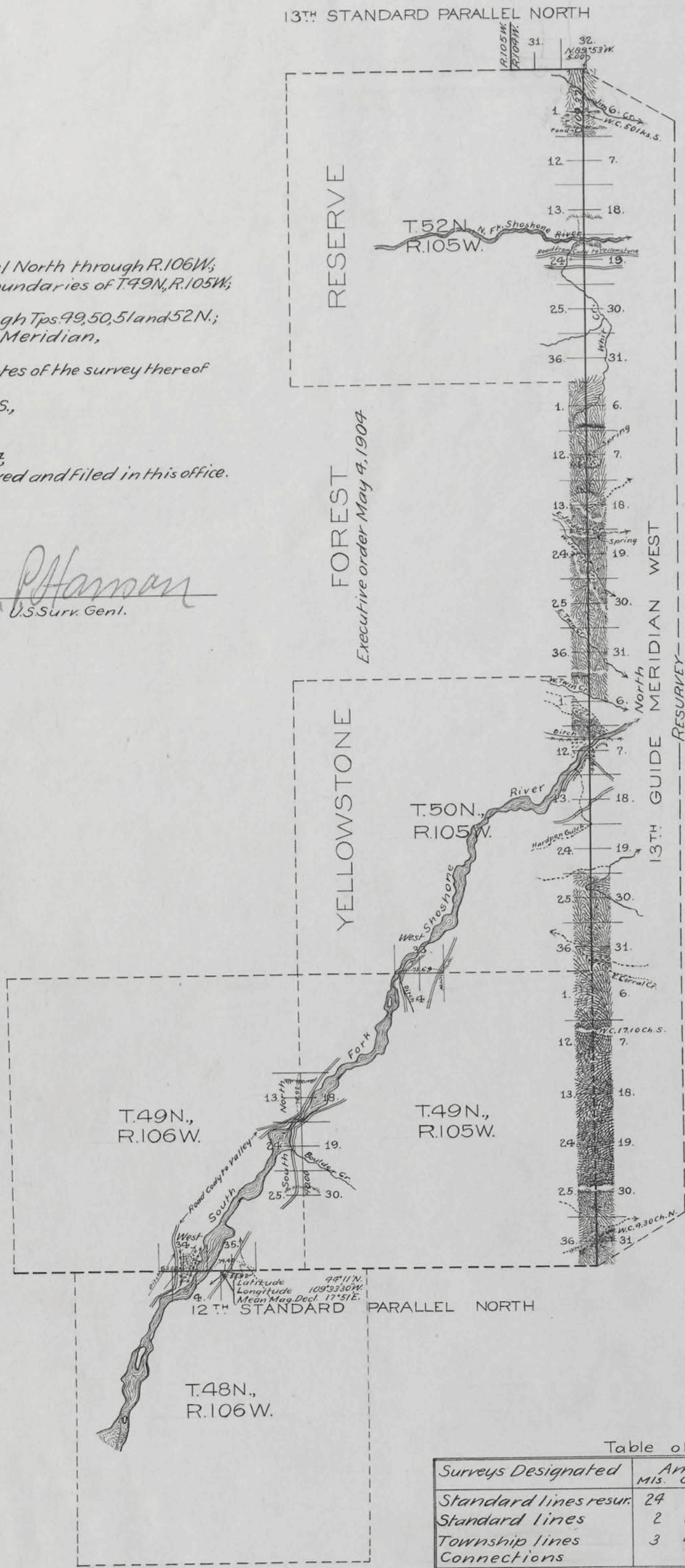


Table of Mileage.

Surveys Designated	Amount		When Surveyed
	Mis.	Lks.	
Standard lines resur.	24 29	37	Apr. 18-June 12, 1904
Standard lines	2 00	00	May 18, 1904
Township lines	3 40	00	May 11-16, 1904
Connections	5 00	00	June 12, 1904

*Triplicate plat forwarded Apr. 10, 1905.
Survey accepted by the Hon. Commissioner
in his letter "E", dated Apr. 3, 1905.*

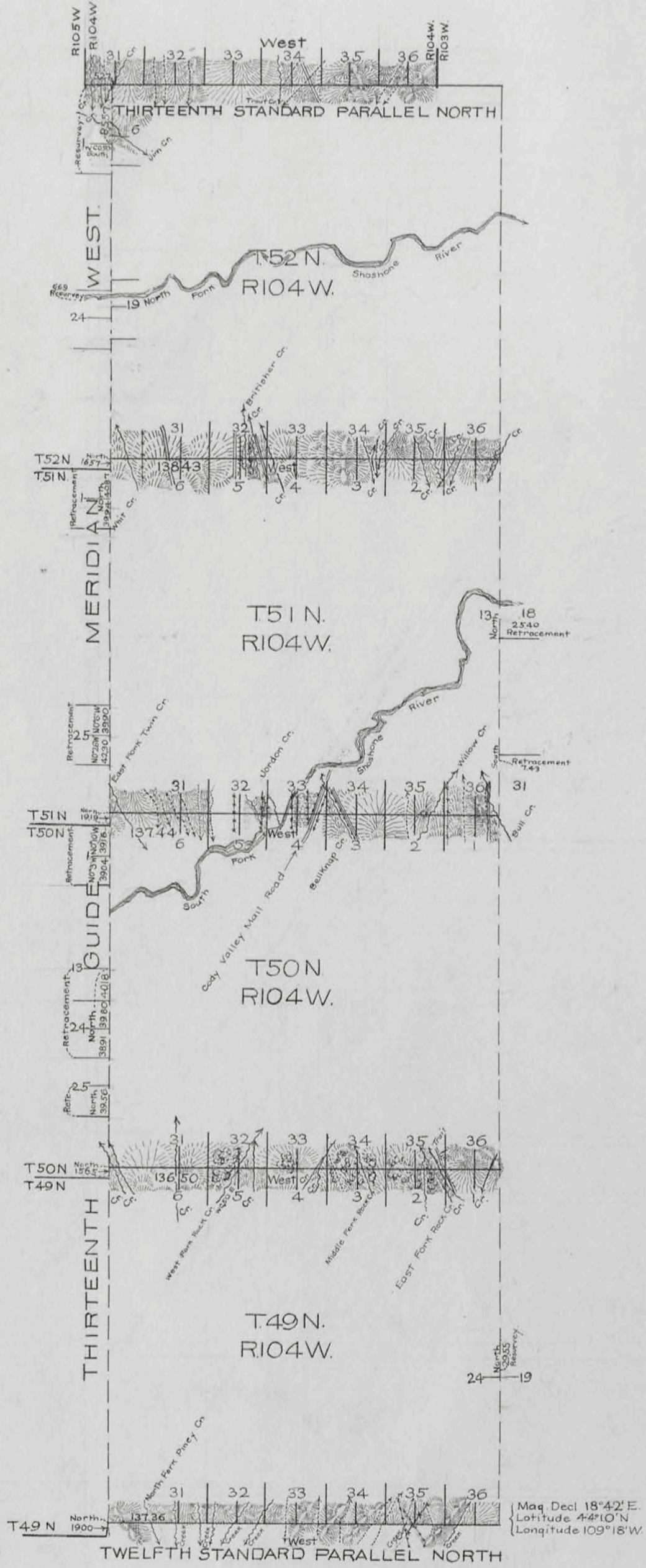
RESURVEY TOWNSHIP EXTERIORS

SCALE: 160 CHAINS TO 1 INCH.

This plat of the Resurvey of
 of
 The 12th and 13th Standard Parallels North, through R.104W;
 parts of the 13th Guide Meridian West through T.52 N;
 North Boundaries of Tps 49, 50, 51 N, R.104 W; part of the East Boundary T.49 N, R.104 W, and
 of the
 Retracement, of
 parts of the East Boundary of T.51 N, R.104 W, and of the 13th Guide Meridian West through Tps 50 and 51 N, R.104 W.

of the
 Sixth Principal Meridian, Wyoming, is strictly conformable to the field notes of the resurvey thereof by Brunt & Vance, USDS under their Contract N^o 328, dated September 5, 1907, which have been examined approved and filed in this office. US Surv. Gen'l's Office, Cheyenne, Wyoming, February 8, 1911

Stephen Robinson
 Surveyor General.



Surveys Designated	Amount			When Surveyed
	Mls.	Chs.	Lks.	
Retracement	5	32	49	June 29, 1908, July 27, 1908
Stand. Tp. Lines	13	69	62	June 16, 1908, July 15, 1908
Township Lines	20	41	92	June 1, 1908, June 24, 1908
Connections	4	00	84	June 5, 1908, July 19, 1908

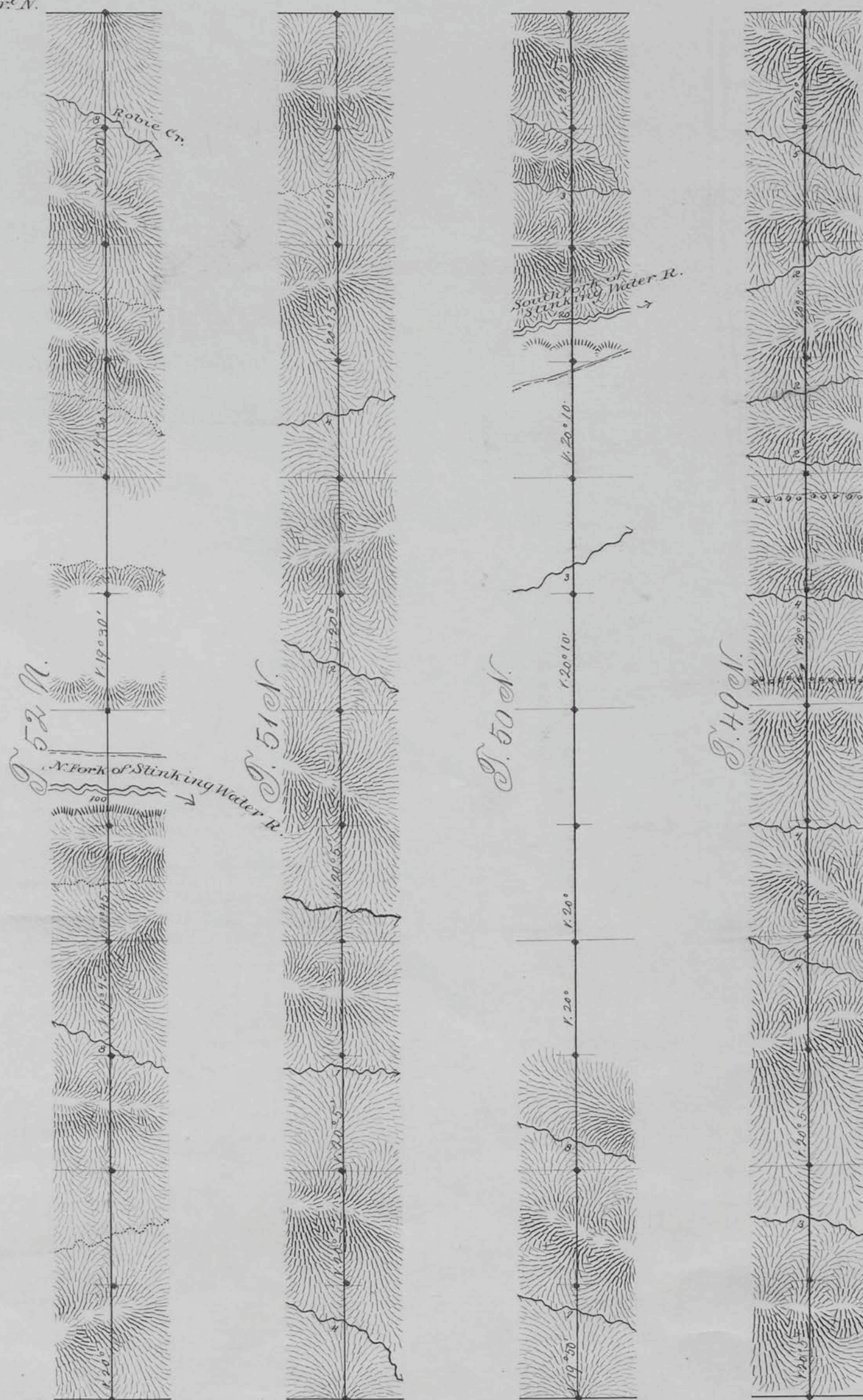
*Accepted by the Survey Commission for this letter
 S. March 6, 1911.*

(24)
Indexes

3026

13th Guide Meridian West.
In Townships 49, 50, 51, & 52 N; betw. Rgs. 104 & 105 W. 6th P. M. W. Ter.
Magn. Var. East; Scale 40⁰⁰⁰ to 1 inch

13th Stand P.C. N.



13th Stand P.N.

Survey Design	By whom sur.	Date of Contn.	Ant. of surv.	When surveyed
13 th Guide M. W.	W. H. Proctor	July 22, 1882	24 — —	Aug 21-24, 1883

I hereby certify, that the above diagram of the 13th Guide Mer. W. in Townships 49, 50, 51 & 52 N; betw. Ranges 104 & 105 W. 6th P. M. W. Ter. is strictly conformable to the field notes of the survey thereof on file in this office, which have been examined and approved.
 Surveyor General's Office,
 Cheyenne, Wyoming
 Jan^y 31st 1884.

Edw. C. Davis
 Surv. Genl.

T. 50 N., R. 105 W., Sixth Principal Meridian, Wyoming, Homestead Entry Survey Links

Plat Accession Number(s)	Year(s) of Survey	
		Homestead Entry Survey No. 98 (Sections 29 and 32)
5257	1914	https://www.wy.blm.gov/cadastral/homesteads/050-099/hes98.pdf
		Homestead Entry Survey No. 255 (Section 29)
6166	1937-38	https://www.wy.blm.gov/cadastral/homesteads/200-255/hes255.pdf