

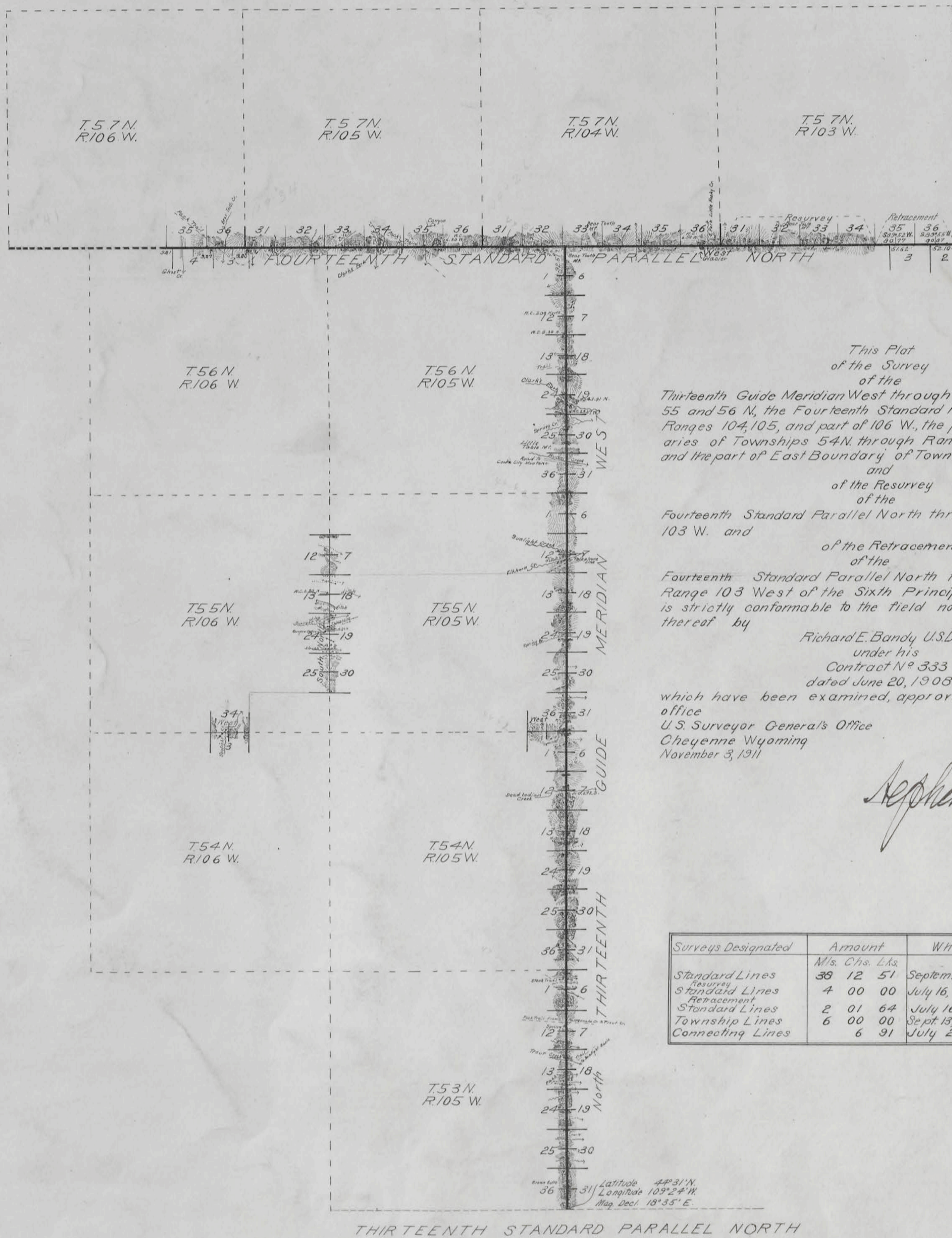
T. 54 N., R. 106 W., Sixth Principal Meridian, Wyoming, Field Note Links

Plat Accession Number(s)	Year(s) of Survey	Township Exterior Plats
1979	1908-09	https://www.wy.blm.gov/cadastral/countyplats/park/fieldnotes/ext1441.pdf
1979	1909	https://www.wy.blm.gov/cadastral/countyplats/park/fieldnotes/retext1441.pdf

8.

TOWNSHIP EXTERIORS

Scale: 1 Inch to 160 Chains



This Plat
of the Survey
of the
Thirteenth Guide Meridian West through Townships 53, 54,
55 and 56 N, the Fourteenth Standard Parallel North through
Ranges 104, 105, and part of 106 W, the part of North Bound-
aries of Townships 54 N through Ranges 105 and 106 W,
and the part of East Boundary of Township 55 N, Range 106 W,
and
of the Resurvey
of the
Fourteenth Standard Parallel North through part of Range
103 W, and
of the Retracement
of the
Fourteenth Standard Parallel North through part of
Range 103 West of the Sixth Principal Meridian Wyoming
is strictly conformable to the field notes of the survey
thereof by

Richard E. Bandy U.S.D.S.
under his
Contract N^o 333
dated June 20, 1908
which have been examined, approved and filed in this
office
U.S. Surveyor General's Office
Cheyenne Wyoming
November 3, 1911

Stephen Robinson
Surveyor General

Surveys Designated	Amount M/s. Chs. Lks.	When Surveyed
Standard Lines	38 12 51	September 2, 1908-July 26, 1909
Resurvey Standard Lines	4 00 00	July 16, 1909-July 19, 1909
Retracement Standard Lines	2 01 64	July 16, 1909
Township Lines	6 00 00	Sept. 13, 1908-Sept. 28, 1908
Connecting Lines	6 91	July 26, 1909

Accepted by the Hon. Commissioner, Letter E, March 2, 1912

41.

1919

T. 54 N., R. 106 W., Sixth Principal Meridian, Wyoming, Mineral Survey Links

Plat Accession Number(s)	Year(s) of Survey	
		Mineral Survey No. 571 (Sections 8 and 9)
6572	1951	https://www.wy.blm.gov/cadastral/mineralsurvey/550-599/ms571.pdf
		Mineral Survey No. 572 (Sections 5, 6, 7, and 8)
6574	1951	https://www.wy.blm.gov/cadastral/mineralsurvey/550-599/ms572.pdf
		Mineral Survey No. 573 (Sections 6, 7, and 8)
6576	1951	https://www.wy.blm.gov/cadastral/mineralsurvey/550-599/ms573.pdf
		Mineral Survey No. 574 (Sections 9, 15, and 16)
6578	1951	https://www.wy.blm.gov/cadastral/mineralsurvey/550-599/ms574.pdf
		Mineral Survey No. 575 (Sections 6 and 7)
6580	1951	https://www.wy.blm.gov/cadastral/mineralsurvey/550-599/ms575.pdf
		Mineral Survey No. 576 (Sections 6 and 7)
6582	1951	https://www.wy.blm.gov/cadastral/mineralsurvey/550-599/ms576.pdf

T. 54 N., R. 106 W., Sixth Principal Meridian, Wyoming, Mineral Survey Links

Plat Accession Number(s)	Year(s) of Survey	Mineral Survey No. 579 (Sections 8 and 9)
6584	1951	https://www.wy.blm.gov/cadastral/mineralsurvey/550-599/ms579.pdf

T. 54 N., R. 106 W., Sixth Principal Meridian, Wyoming, Homestead Entry Survey Links

Plat Accession Number(s)	Year(s) of Survey	
		Homestead Entry Survey No. 43 (Sections 3 and 4)
5205	1917	https://www.wy.blm.gov/cadastral/homesteads/037-049/hes43.pdf
		Homestead Entry Survey No. 226 (Sections 3 and 4)
5361	1920	https://www.wy.blm.gov/cadastral/homesteads/200-255/hes226.pdf
		Homestead Entry Survey No. 230 (Section 3)
5364	1920	https://www.wy.blm.gov/cadastral/homesteads/200-255/hes230.pdf