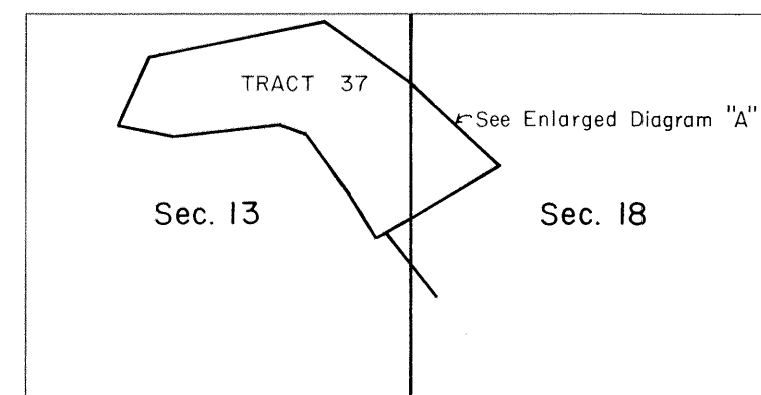


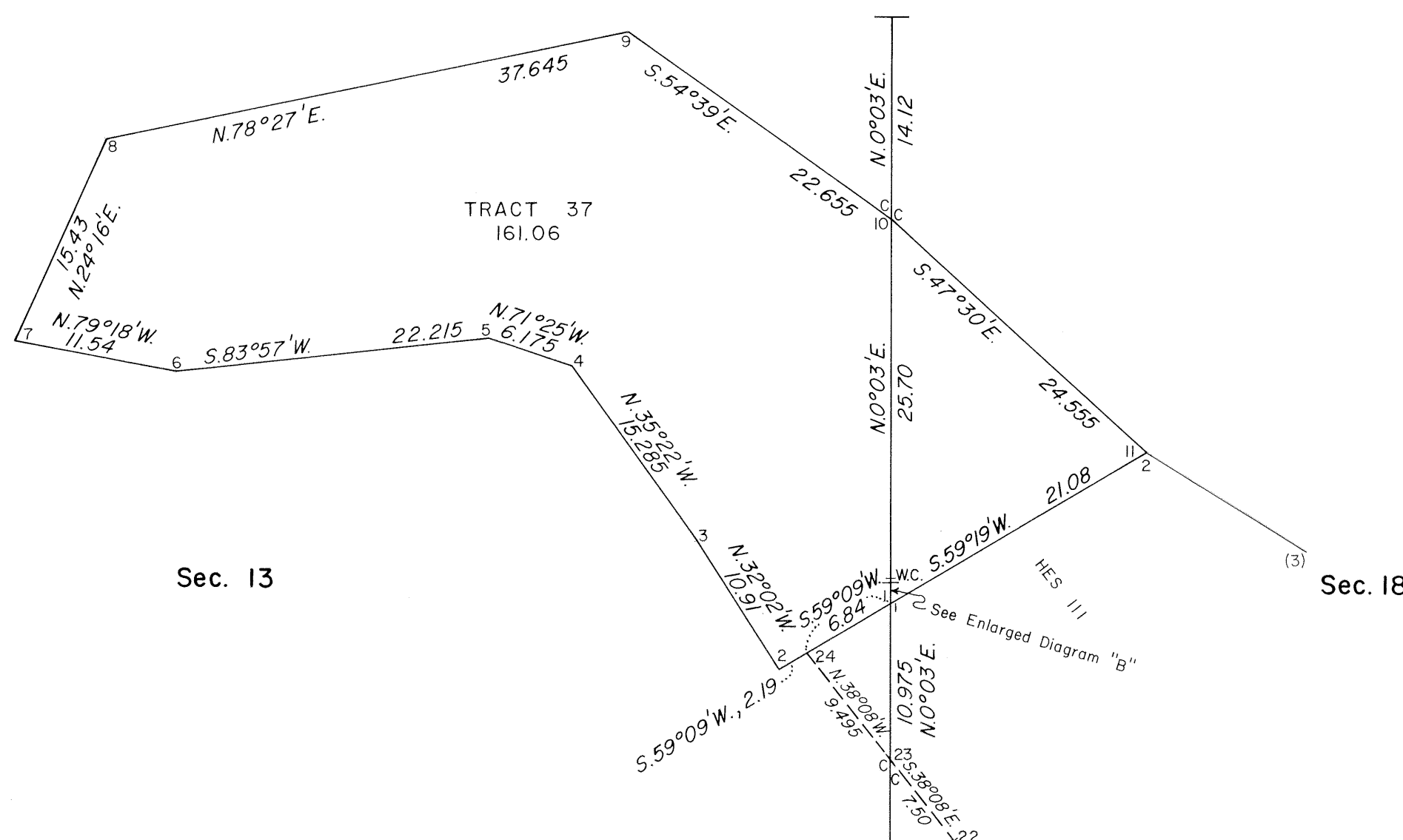
T. 55 N., R. 105 W., Sixth Principal Meridian, Wyoming, Field Note Links

Plat Accession Number(s)	Year(s) of Survey	
		Township Subdivision Plats
7620	1982	https://www.wy.blm.gov/cadastral/countyplats/park/fieldnotes/t55nr106w_gp440fn.pdf
1956	1908	https://www.wy.blm.gov/cadastral/countyplats/park/fieldnotes/t55nr105w_c333fn.pdf
		Township Exterior Plats
1979	1908-09	https://www.wy.blm.gov/cadastral/countyplats/park/fieldnotes/ext1441.pdf
1979	1909	https://www.wy.blm.gov/cadastral/countyplats/park/fieldnotes/retext1441.pdf
		Yellowstone National Park Boundary
5963	1893	https://www.wy.blm.gov/cadastral/countyplats/fremont/fieldnotes/ynp_0013fn.pdf

TOWNSHIP 55 NORTH, RANGE 106 WEST, OF THE SIXTH PRINCIPAL MERIDIAN, WYOMING.
DEPENDENT RESURVEY, METES AND BOUNDS SURVEY OF TRACT 37



ENLARGED DIAGRAM "A"



A history of surveys is contained in the field notes.
This plat represents the dependent resurvey of a portion of the east boundary, and the metes and bounds survey of Tract No. 37 (originally designated H.E.S. No. 175, cancelled by letter "E" dated December 1, 1928) designed to restore the corners in their true original locations according to the best available evidence, T. 55 N., R. 106 W., Sixth Principal Meridian, Wyoming.

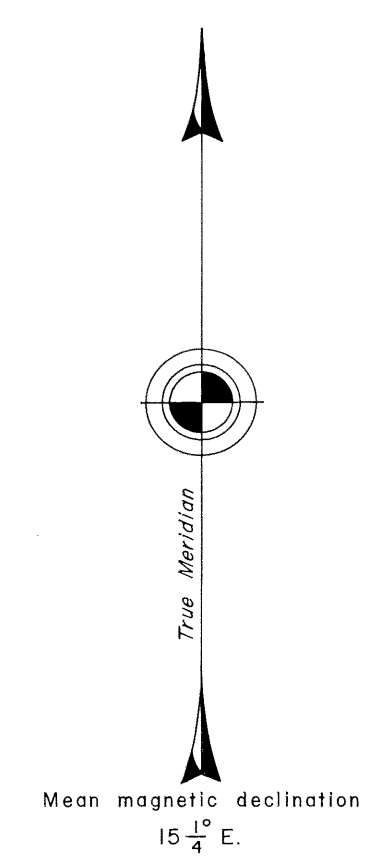
Except as indicated hereon, the lottings and areas are as shown on the plats approved November 3, 1911, and accepted March 2, 1912.

Survey executed by William H. Herbst, Supervisory Cadastral Surveyor, beginning August 19, 1982, and completed August 26, 1982, pursuant to Special Instructions dated July 26, 1982, for Group No. 440, Wyoming.

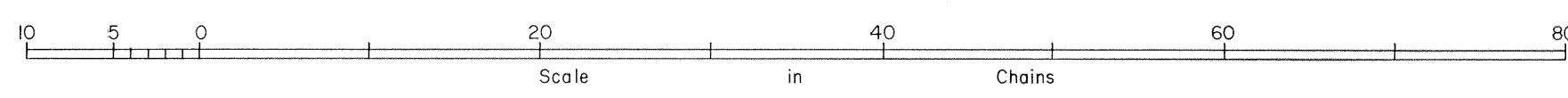
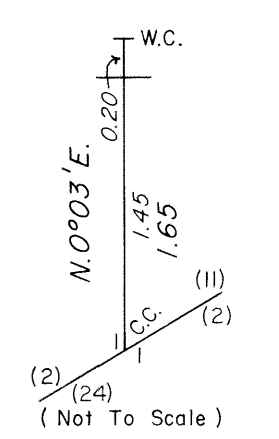
UNITED STATES DEPARTMENT OF THE INTERIOR
BUREAU OF LAND MANAGEMENT
Cheyenne, Wyoming December 28, 1982

This plat is strictly conformable to the approved field notes, and the survey, having been correctly executed in accordance with the requirements of law and the regulations of this Bureau, is hereby accepted.

For the Director
Richard G. Pates
Chief Cadastral Surveyor



ENLARGED DIAGRAM "B"



TOWNSHIP NO.55 NORTH, RANGE NO.105 WEST, OF THE SIXTH PRINCIPAL MERIDIAN, WYOMING.

SUPPLEMENTAL PLAT OF SECTIONS 11 AND 17.

SCALE : 1 INCH = 10 CHAINS.



Public Survey Office
 Cheyenne, Wyoming, January 22, 1935.
 The above supplemental plat of sections 11 and 17, Township No. 55 North, Range No. 105 West, of the sixth principal meridian, Wyoming, based upon the plat approved November 3, 1911, modified by superimposing thereon the metes-and-bounds of all accepted Homestead Entry surveys affecting said sections, prepared in accordance with instructions contained in Commissioner's letter "E", dated January 11, 1935, for the primary purpose of giving designation and area to the offered land (Tract A, Section 11) and the selected land (Lot 8, Section 17) to accommodate the application of Simon Snyder for exchange of lands under the Act of March 20, 1922, is hereby approved.

Joel D. Navet.
 Office Cadastral Engineer.

DEPARTMENT OF THE INTERIOR
 GENERAL LAND OFFICE
 Washington, D.C., February 11, 1935.
 The amended lottings represented by this supplemental plat having been correctly made in accordance with the regulations of this office, the plat is hereby accepted.

Antoinette F. ...
 Assistant Commissioner.

066 L.M.P.

1430-A

Transmitted to Cheyenne Co. May 19, 1936. 55-105

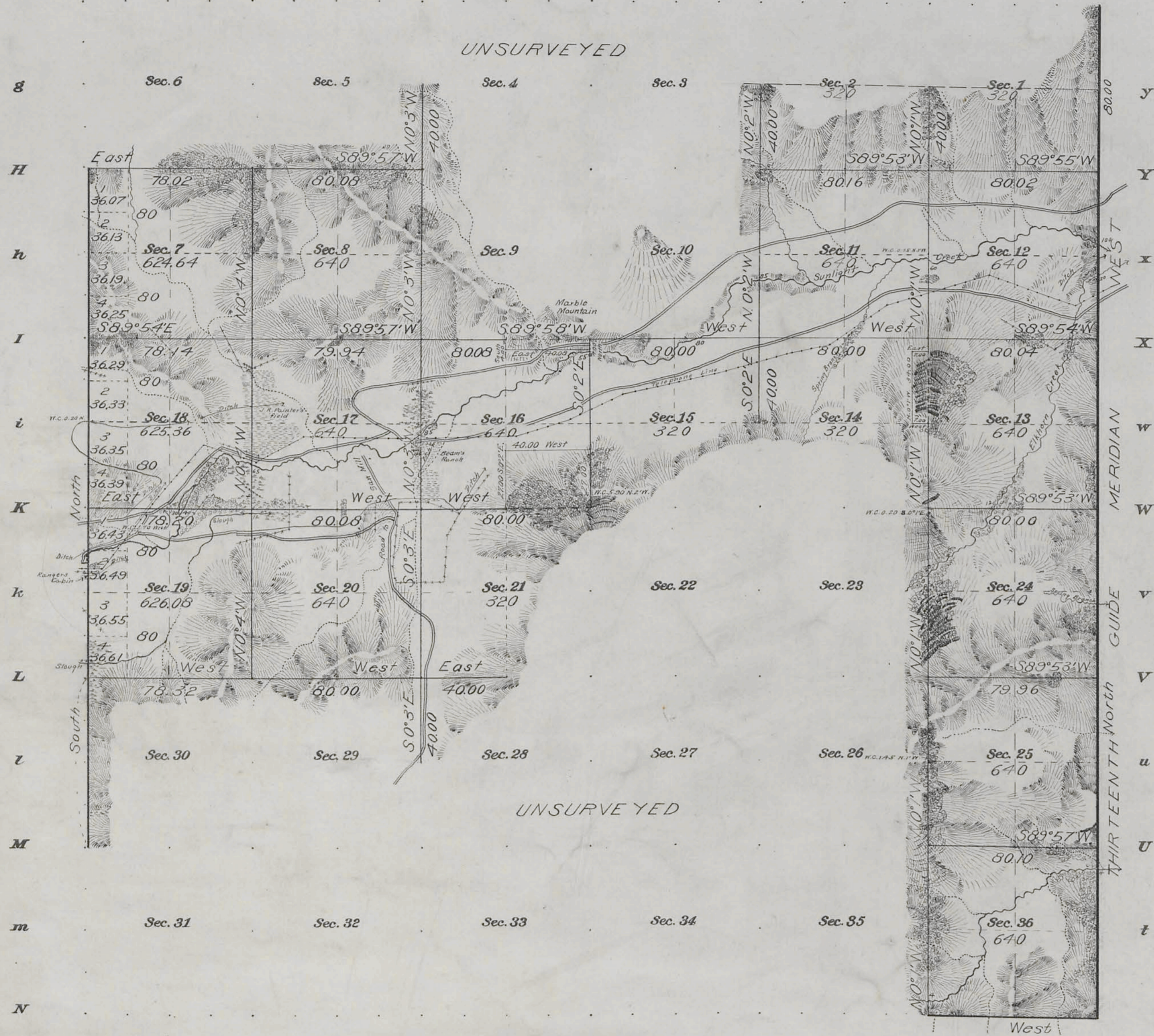
RWS/80

1956

(4-675a)

Fractional Township No 55 North, Range No 105 West of the Sixth Principal Meridian, Wyoming
 Situated in Shoshone National Forest

G f F b B a A



Areas in Acres.	
Public Land	9876.08
Indian Reservation	
Indian Allotments	
Mineral Claims	
Water Surface	
Total Area	9876.08

Scale 40 Chains to an inch

Mean Magnetic Declination 20° 30' E.
 Latitude 44° 41' N.
 Longitude 109° 24' W.

Surveys Designated.	By Whom Surveyed.	Contract		Amount of Surveys			When Surveyed.	
		No.	Date	Mls.	chs.	fts.	Began.	Completed.
E.W.S. Township Lines	Richard F Brandy	333	June 20, 1908	11	00	00	Sept. 13, 1908	Sept. 28, 1908
Subdivision Lines	" "	" "	" "	33	73	14	Sept. 17, 1908	Sept. 30, 1908

The above map of Township No. 55 North Range No 105 West of the Sixth Principal Meridian, Wyoming is strictly conformable to the field notes of the survey thereof on file in this office, which have been examined and approved.

U.S. Surveyor General's Office,
 Cheyenne Wyoming November 3, 1911

Stephen P. Johnson
 Surveyor General.

55-105

Accepted by the Hon. Commissioner in his letter "B" Mar. 3, 1912
 Duplicate plat mailed Lander, Land Office, May 6, 1912

DIAGRAM
OF THE
N.E. & S. BOUNDARIES
OF THE
PUBLIC FOREST RESERVATION
AND THE
FRAC.E. BOUNDARY
OF THE
YELLOWSTONE NATIONAL PARK
IN
WYOMING

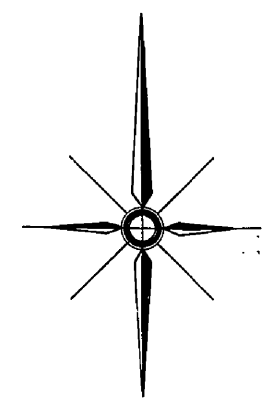
As surveyed by Philip M. Gallaher U.S. Deputy Surveyor Aug. 3rd to Oct. 22nd 1893. under his contract No. 263 dated Oct. 17. 1894.

Scale 1/2 in = 1 mile
 O indicates corners established
 + indicates proper points for corners but not established

I certify that the above diagram of the N.E. & S. Boundaries of the Public Forest Reservation and the Frac.E. Boundary of the Yellowstone National Park in Wyoming, is strictly conformable to the field notes of the survey thereof on file in this office which have been examined and approved.

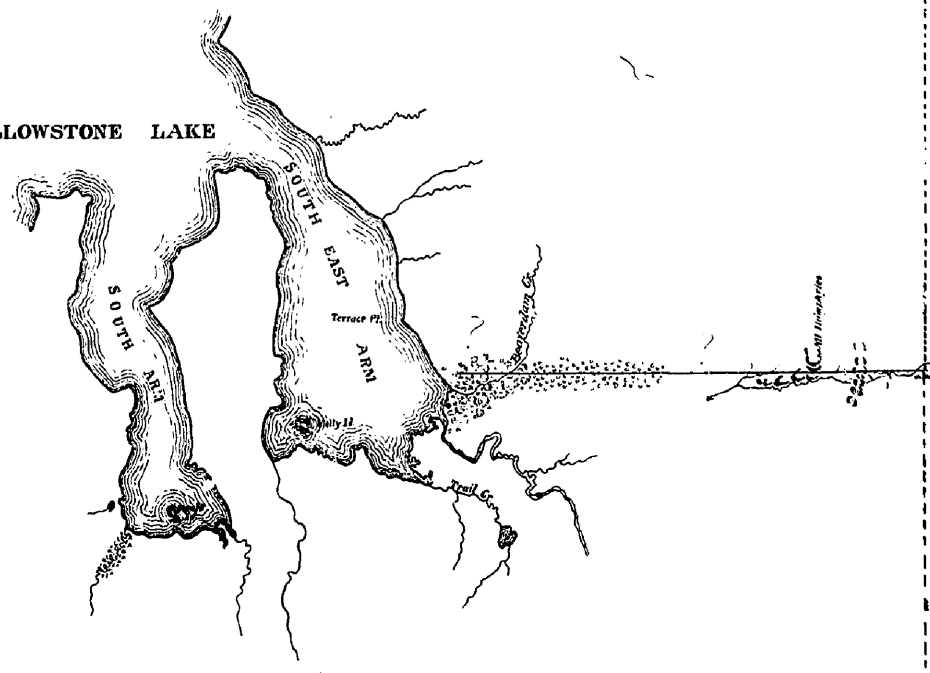
U.S. Sur. Gen's Office
 Helena Mont July 17, 1894.

Joseph H. Weil
 Sur. Gen.
 for Montana



YELLOWSTONE NATIONAL PARK

YELLOWSTONE LAKE



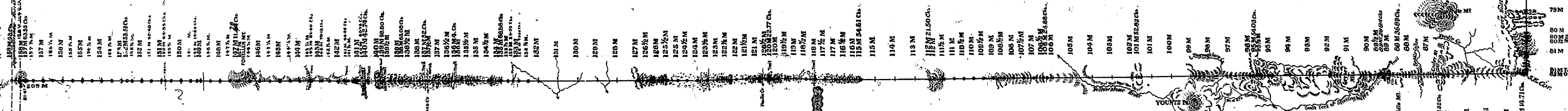
FOREST RESERVATION

PUBLIC

W Y O M I N G

13 I D A H O

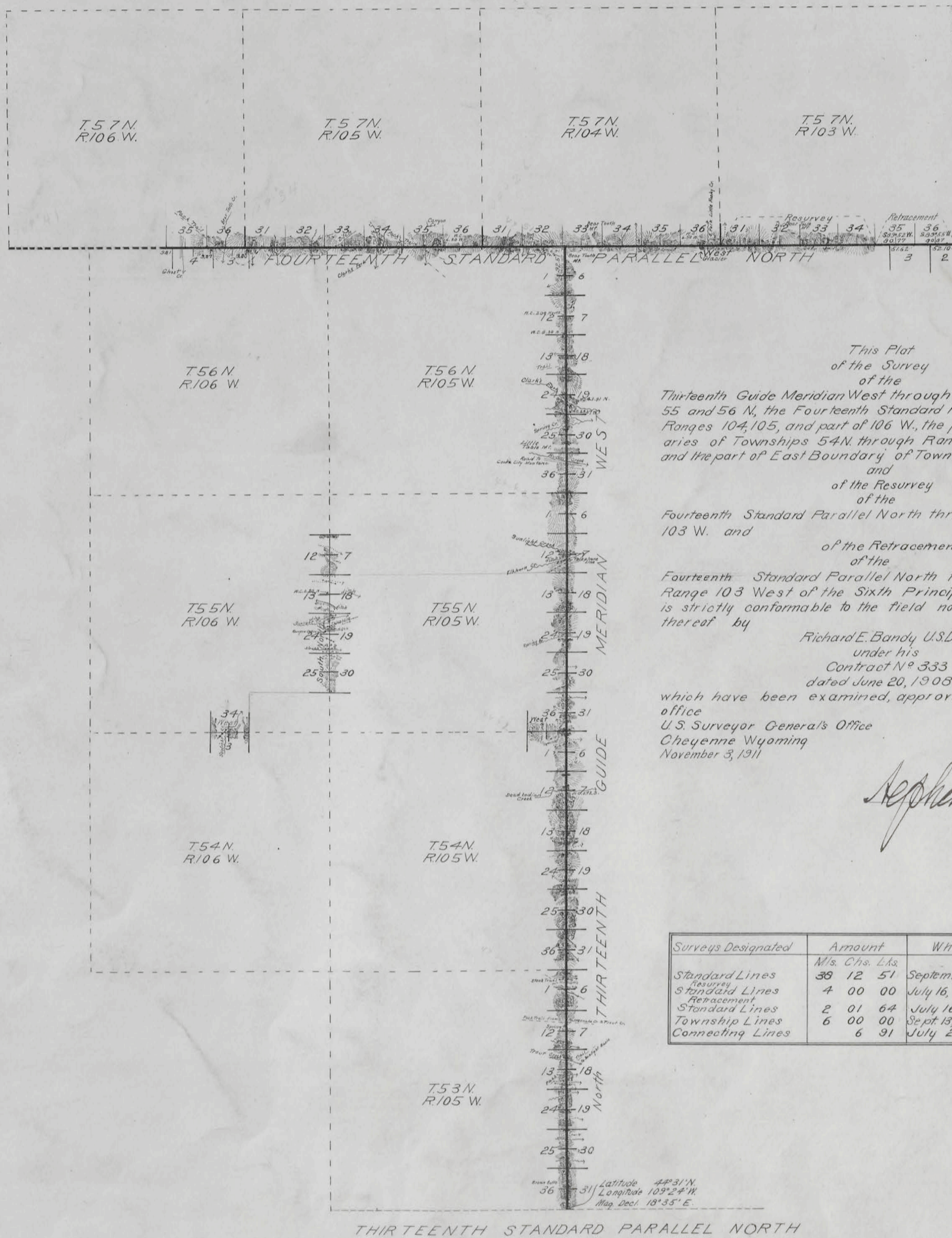
25M
26M
27M
28M
29M
30M
31M
32M
33M
34M
35M
36M
37M
38M
39M
40M
41M
42M
43M
44M
45M
46M
47M
48M
49M
50M
51M
52M
53M
54M
55M
56M
57M
58M
59M
60M
61M
62M
63M
64M
65M
66M
67M
68M
69M
70M
71M
72M
73M
74M
75M
76M
77M
78M
79M
80M
81M
82M
83M
84M
85M
86M
87M
88M
89M
90M
91M
92M
93M
94M
95M
96M
97M
98M
99M
100M



8.

TOWNSHIP EXTERIORS

Scale: 1 Inch to 160 Chains



This Plat
of the Survey
of the
Thirteenth Guide Meridian West through Townships 53, 54,
55 and 56 N, the Fourteenth Standard Parallel North through
Ranges 104, 105, and part of 106 W., the part of North Bound-
aries of Townships 54 N. through Ranges 105 and 106 W.,
and the part of East Boundary of Township 55 N. Range 106 W.,
and
of the Resurvey
of the
Fourteenth Standard Parallel North through part of Range
103 W. and
of the Retracement
of the
Fourteenth Standard Parallel North through part of
Range 103 West of the Sixth Principal Meridian Wyoming
is strictly conformable to the field notes of the survey
thereof by
Richard E. Bandy U.S.D.S.
under his
Contract N^o 333
dated June 20, 1908
which have been examined, approved and filed in this
office
U.S. Surveyor General's Office
Cheyenne Wyoming
November 3, 1911

Stephen Robinson
Surveyor General

Surveys Designated	Amount M/s. Chs. Lks.	When Surveyed
Standard Lines	38 12 51	September 2, 1908-July 26, 1909
Resurvey Standard Lines	4 00 00	July 16, 1909-July 19, 1909
Retracement Standard Lines	2 01 64	July 16, 1909
Township Lines	6 00 00	Sept. 13, 1908-Sept. 28, 1908
Connecting Lines	6 91	July 26, 1909

Accepted by the Hon. Commissioner, Letter E, March 2, 1912

41.

1919

T. 55 N., R. 105 W., Sixth Principal Meridian, Wyoming, Homestead Entry Survey Links

Plat Accession Number(s)	Year(s) of Survey	
		Homestead Entry Survey No. 45 (Sections 12 and 13)
5207	1911	https://www.wy.blm.gov/cadastral/homesteads/037-049/hes45.pdf
		Homestead Entry Survey No. 46 (Sections 16 and 17)
5208	1911-13	https://www.wy.blm.gov/cadastral/homesteads/037-049/hes46.pdf
		Homestead Entry Survey No. 69 (Sections 17 and 18)
5228	1913	https://www.wy.blm.gov/cadastral/homesteads/050-099/hes69.pdf
		Homestead Entry Survey No. 70 (Sections 7, 17, and 18)
5229	1913	https://www.wy.blm.gov/cadastral/homesteads/050-099/hes70.pdf
		Homestead Entry Survey No. 71 (Sections 11 and 12)
5230	1914	https://www.wy.blm.gov/cadastral/homesteads/050-099/hes71.pdf
		Homestead Entry Survey No. 72 (Sections 9 and 16)
5231	1913	https://www.wy.blm.gov/cadastral/homesteads/050-099/hes72.pdf

T. 55 N., R. 105 W., Sixth Principal Meridian, Wyoming, Homestead Entry Survey Links

Plat Accession Number(s)	Year(s) of Survey	
		Homestead Entry Survey No. 86 (Sections 11, 12, and 14)
5245	1914	https://www.wy.blm.gov/cadastral/homesteads/050-099/hes86.pdf
		Homestead Entry Survey No. 111 (Sections 18 and 19)
5267	1915	https://www.wy.blm.gov/cadastral/homesteads/100-149/hes111.pdf
		Homestead Entry Survey No. 112 (Sections 17, 18, 19, and 20)
5268	1915	https://www.wy.blm.gov/cadastral/homesteads/100-149/hes112.pdf
		Homestead Entry Survey No. 113 (Sections 10, 11, 14, and 15)
5269	1915	https://www.wy.blm.gov/cadastral/homesteads/100-149/hes113.pdf
		Homestead Entry Survey No. 139 (Section 16)
5288	1915	https://www.wy.blm.gov/cadastral/homesteads/100-149/hes139.pdf
		Homestead Entry Survey No. 140 (Sections 16, 17, 20, and 21)
5289	1924	https://www.wy.blm.gov/cadastral/homesteads/100-149/hes140.pdf

T. 55 N., R. 105 W., Sixth Principal Meridian, Wyoming, Homestead Entry Survey Links

Plat Accession Number(s)	Year(s) of Survey	
		Homestead Entry Survey No. 161 (Sections 17 and 20)
5303	1924	https://www.wy.blm.gov/cadastral/homesteads/150-199/hes161.pdf
		Homestead Entry Survey No. 163 (Sections 16 and 17)
5305	1917	https://www.wy.blm.gov/cadastral/homesteads/150-199/hes163.pdf
		Homestead Entry Survey No. 174 (Section 16)
5315	1917	https://www.wy.blm.gov/cadastral/homesteads/150-199/hes174.pdf
		Homestead Entry Survey No. 175 (Section 18)
5316	1917	https://www.wy.blm.gov/cadastral/homesteads/150-199/hes175.pdf
		Homestead Entry Survey No. 183 (Sections 20, 21, 28, and 29)
5324	1920	https://www.wy.blm.gov/cadastral/homesteads/150-199/hes183.pdf
		Homestead Entry Survey No. 215 (Section 12)
5352	1917	https://www.wy.blm.gov/cadastral/homesteads/200-255/hes215.pdf

T. 55 N., R. 105 W., Sixth Principal Meridian, Wyoming, Homestead Entry Survey Links

Plat Accession Number(s)	Year(s) of Survey	
		Homestead Entry Survey No. 216 (Sections 12 and 13)
5353	1917	https://www.wy.blm.gov/cadastral/homesteads/200-255/hes216.pdf
		Homestead Entry Survey No. 228 (Sections 6 and 7)
5363	1920	https://www.wy.blm.gov/cadastral/homesteads/200-255/hes228.pdf
		Homestead Entry Survey No. 234 (Sections 17, 18, and 19)
5367	1920	https://www.wy.blm.gov/cadastral/homesteads/200-255/hes234.pdf
		Homestead Entry Survey No. 244 (Section 19)
5376	1922	https://www.wy.blm.gov/cadastral/homesteads/200-255/hes244.pdf
		Homestead Entry Survey No. 252 (Section 12)
5381	1930	https://www.wy.blm.gov/cadastral/homesteads/200-255/hes252.pdf