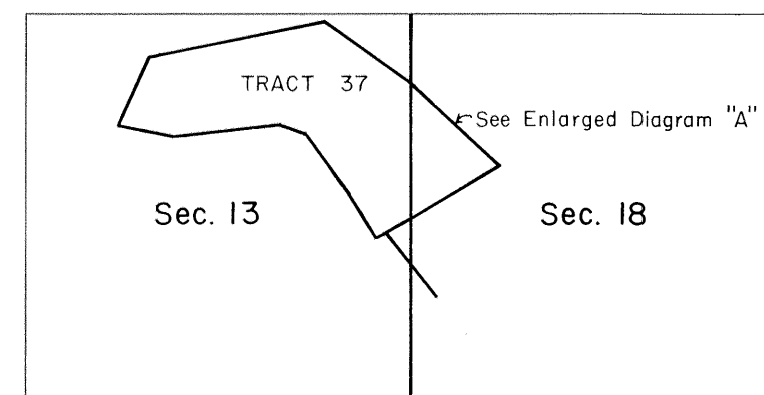


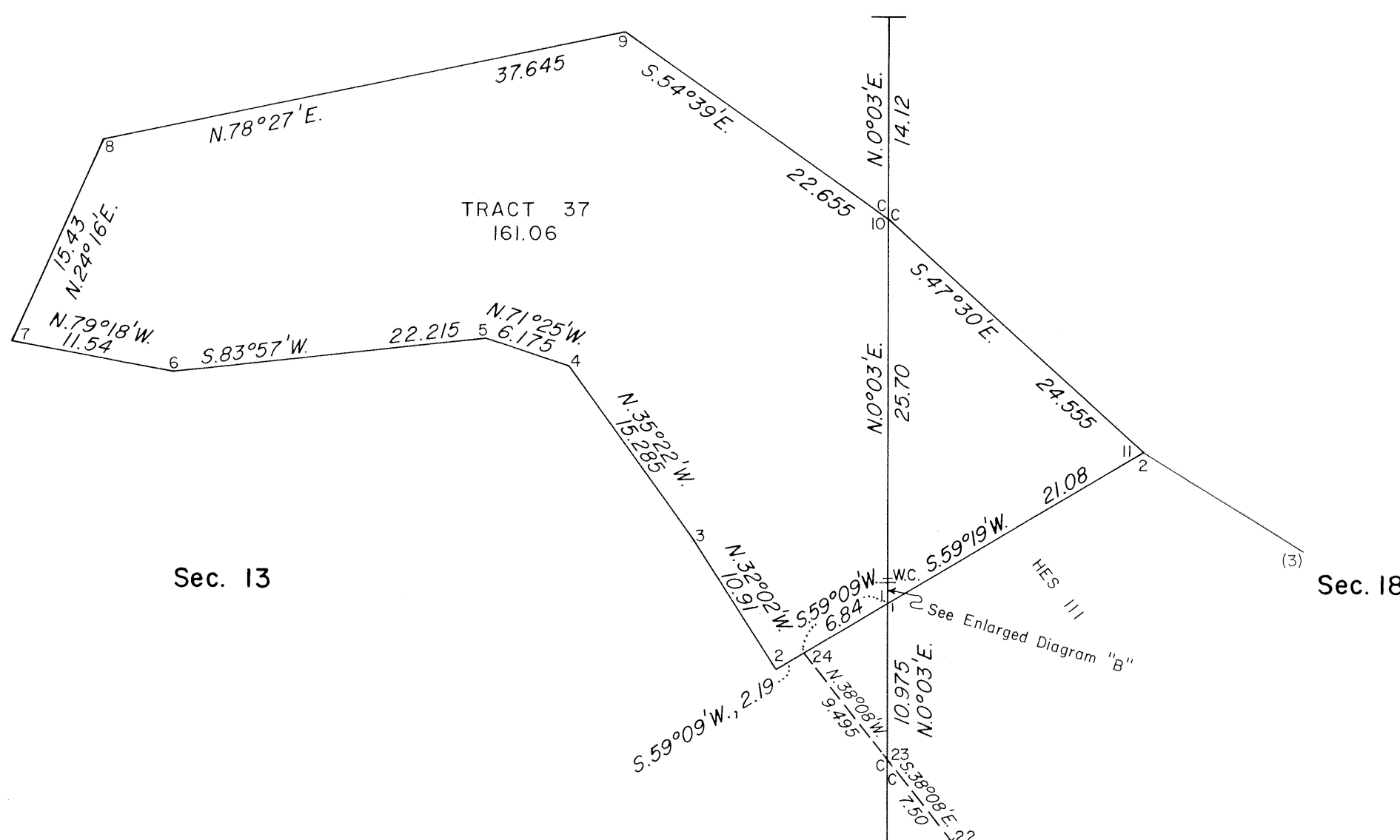
T. 55 N., R. 106 W., Sixth Principal Meridian, Wyoming, Field Note Links

Plat Accession Number(s)	Year(s) of Survey	
		Township Subdivision Plats
7620	1982	https://www.wy.blm.gov/cadastral/countyplats/park/fieldnotes/t55nr106w_gp440fn.pdf
1957	1908	https://www.wy.blm.gov/cadastral/countyplats/park/fieldnotes/t55nr106w_c333fn.pdf
		Township Exterior Plats
1979	1908-09	https://www.wy.blm.gov/cadastral/countyplats/park/fieldnotes/ext1441.pdf
1979	1909	https://www.wy.blm.gov/cadastral/countyplats/park/fieldnotes/retext1441.pdf

TOWNSHIP 55 NORTH, RANGE 106 WEST, OF THE SIXTH PRINCIPAL MERIDIAN, WYOMING.
DEPENDENT RESURVEY, METES AND BOUNDS SURVEY OF TRACT 37



ENLARGED DIAGRAM "A"



A history of surveys is contained in the field notes.
This plat represents the dependent resurvey of a portion of the east boundary, and the metes and bounds survey of Tract No. 37 (originally designated H.E.S. No. 175, cancelled by letter "E" dated December 1, 1928) designed to restore the corners in their true original locations according to the best available evidence, T. 55 N., R. 106 W., Sixth Principal Meridian, Wyoming.

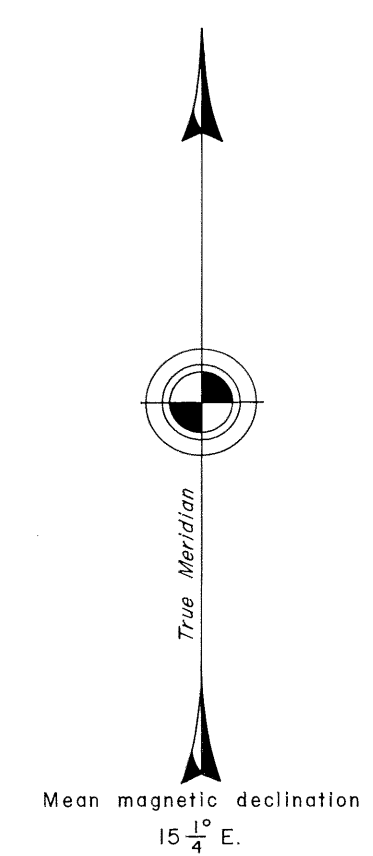
Except as indicated hereon, the lottings and areas are as shown on the plats approved November 3, 1911, and accepted March 2, 1912.

Survey executed by William H. Herbst, Supervisory Cadastral Surveyor, beginning August 19, 1982, and completed August 26, 1982, pursuant to Special Instructions dated July 26, 1982, for Group No. 440, Wyoming.

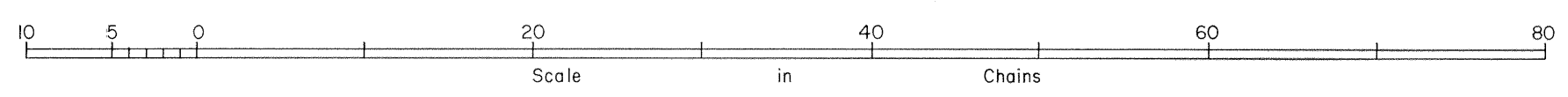
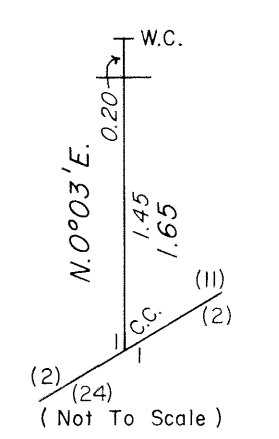
UNITED STATES DEPARTMENT OF THE INTERIOR
BUREAU OF LAND MANAGEMENT
Cheyenne, Wyoming December 28, 1982

This plat is strictly conformable to the approved field notes, and the survey, having been correctly executed in accordance with the requirements of law and the regulations of this Bureau, is hereby accepted.

For the Director
Richard G. Pates
Chief Cadastral Surveyor



ENLARGED DIAGRAM "B"

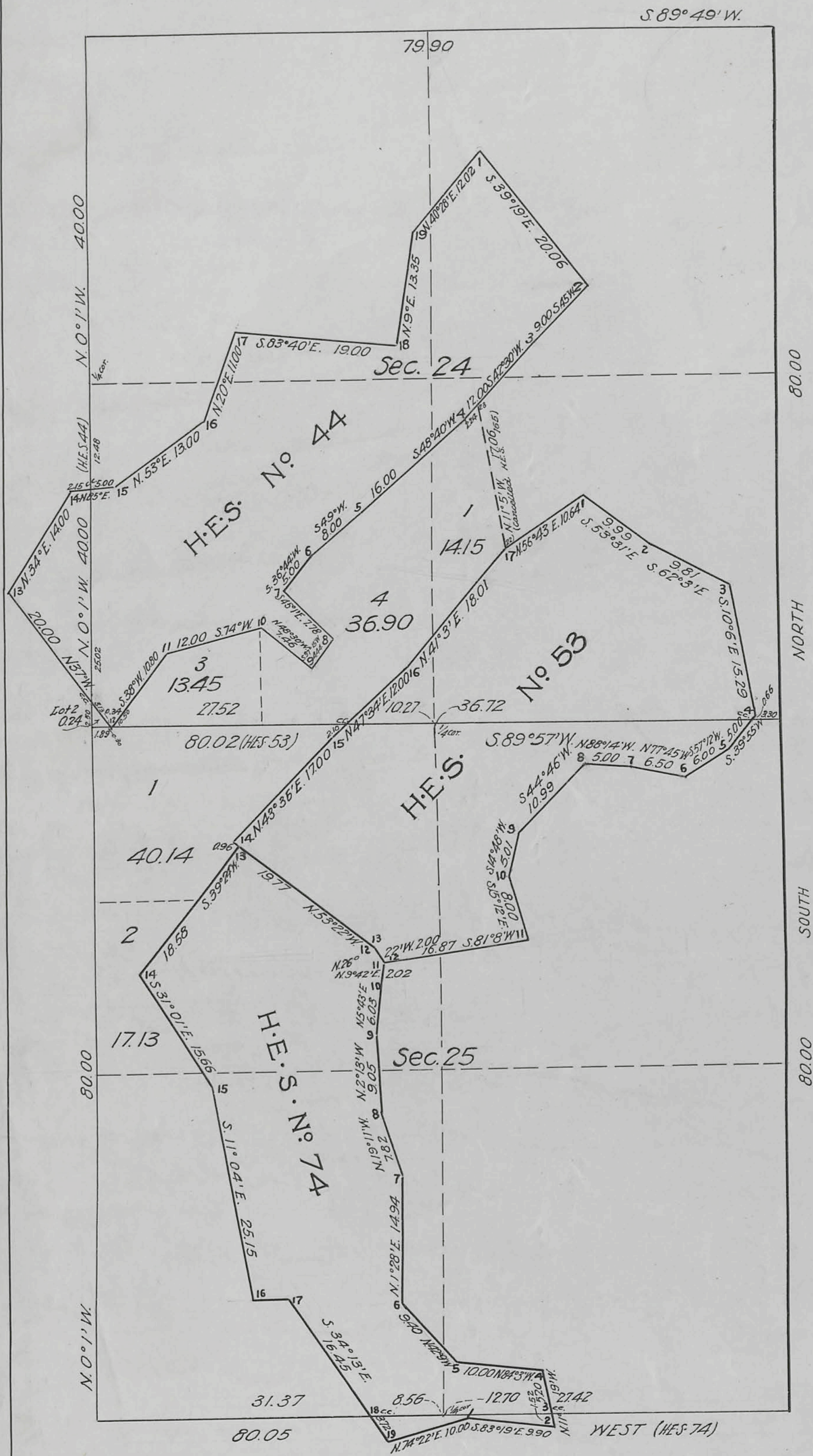


Lat. 44° 44.3' N.
Long. 109° 33.8' W.

Supplemental Plat No. 1.

TOWNSHIP N° 55 NORTH, RANGE N° 106 WEST OF THE 6th PRIN. MERIDIAN WYOMING

Scale 1 inch = 10 chs.



This Supplemental Plat No. 1, Township No. 55 North, Range No. 106 West of the Sixth Principal Meridian, Wyoming, plat approved Nov. 3, 1911 is prepared in accordance with Commissioner's Letter "E" File 1222550 dated June 22, 1926; to show the segregation in Secs. 24 and 25 of Homestead Entry Surveys Nos. 44, 53 and 74, and fractional lots created thereby, in order to accommodate H.E. Lander 031416, based on Shoshone National Forest List No. 2-2467, a portion of the east bdy. of this tract being defined by line 22-23 of cancelled H.E.S. No. 165 and so shown on this plat; which is hereby approved.

Public Survey Office
Cheyenne, Wyoming.
October 5, 1926

Joel Q. Naret
Office Cadastral Engineer

DEPARTMENT OF THE INTERIOR

General Land Office

Washington, D.C. October 13th 1926.

This supplemental plat having been properly prepared in accordance with instructions from this office, is hereby accepted.

Thos C. Howell
Assistant Commissioner.

Original
 55-106
 Examined by 13, 1926

1431-A

WAR
1040

1953

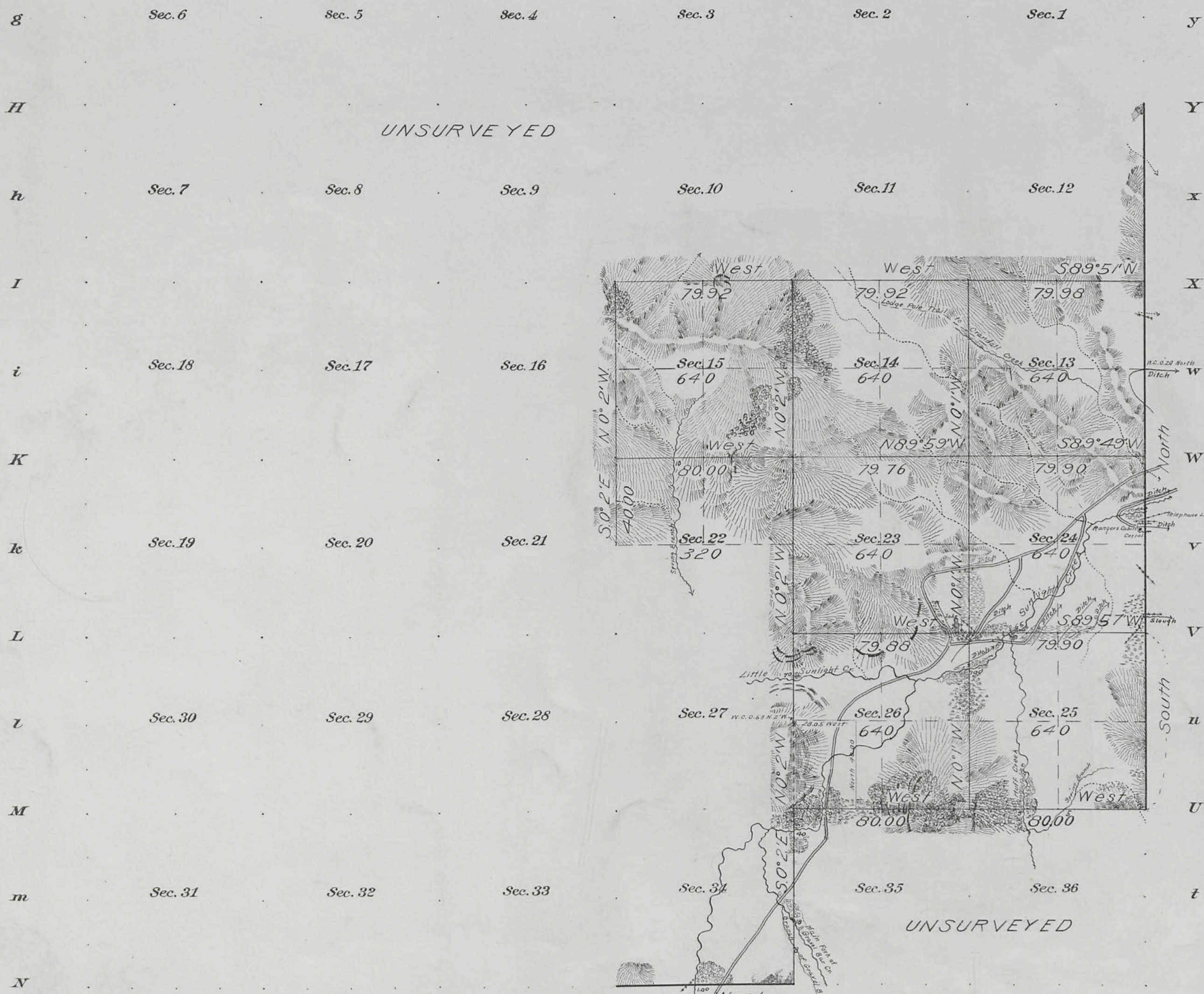
71

10

1957

(4-675a)

*Fractional Township No 55 North, Range No 106 West of the Sixth Principal Meridian, Wyoming
 Situated in Shoshone National Forest*



Areas in Acres.	
Public Land	4800.00
Indian Reservation	
Indian Allotments	
Mineral Claims	
Water Surface	
Total Area	4800.00

Scale 40 Chains to an inch

Mean Magnetic Declination 19°50'E.
 Latitude 44° 41'N.
 Longitude 109° 32' W.

The above map of *Fractional* Township No. 55 North Range No 106 West of the Sixth Principal Meridian Wyoming is strictly conformable to the field notes of the survey thereof on file in this office, which have been examined and approved.

U. S. Surveyor General's Office,
 Cheyenne Wyoming November 3, 1911

Stephen P. Hammond
 Surveyor General.

Surveys Designated.	By Whom Surveyed.	Contract		Amount of Surveys			When Surveyed.	
		No.	Date	Mls.	chs.	lls.	Begun.	Completed.
EandS. Township Lines	Richard E. Bandy	333	June 20, 1908	5	00	00	Sept. 28, 1908	Oct. 3, 1908
Subdivision Lines	"	"	"	18	39	26	Oct 1, 1908	Oct. 7, 1908

See Survey 2911
 made on 29th March 1917
 by 2911/11 501.00 by m & b,
 Dec. 17 1910 for Standard 1911

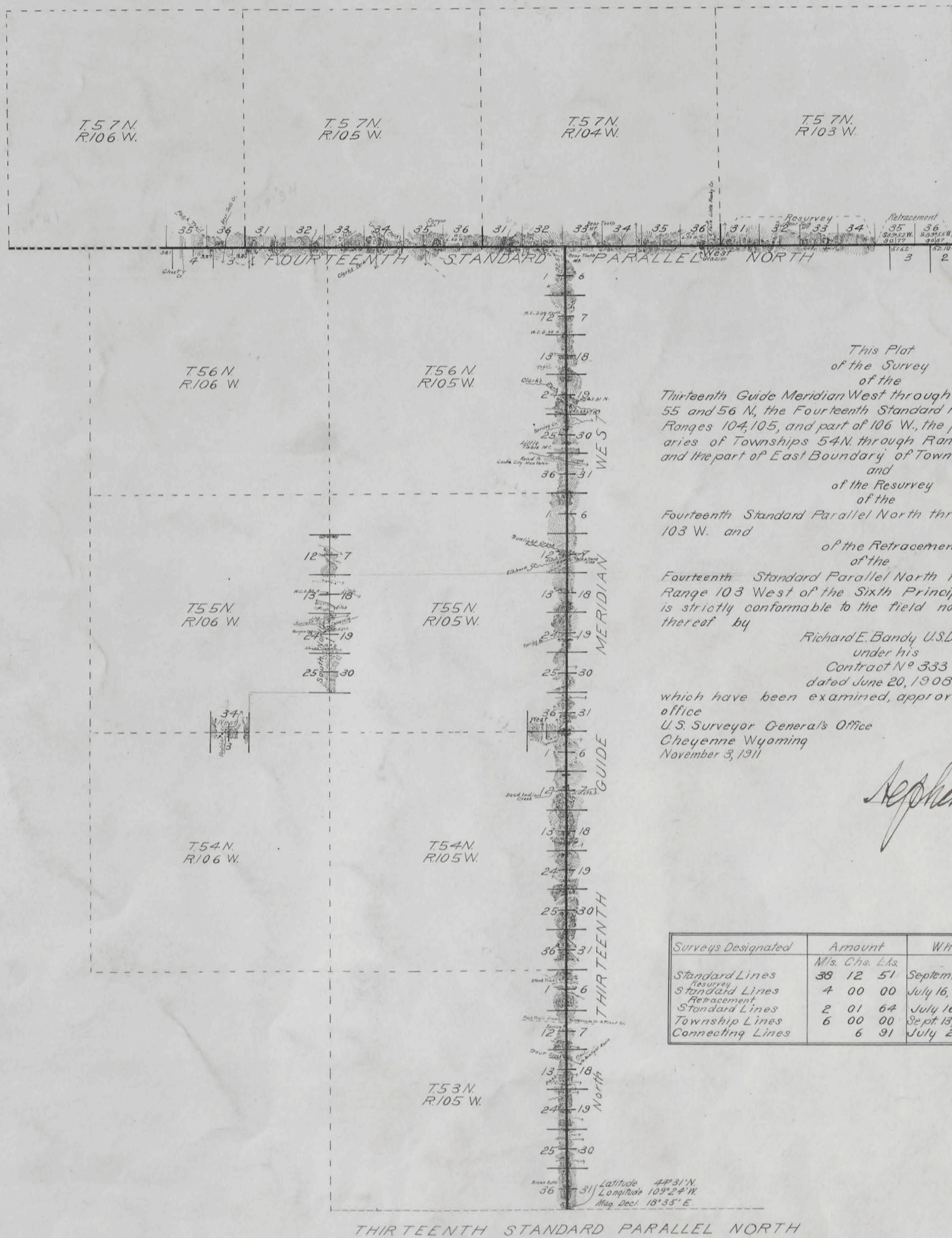
55-106

Accepted by the Commission in his letter "C," Nov 7, 1912
 Duplicate plot mailed to Landev, Wyo, Land Office, May 6, 1912

8.

TOWNSHIP EXTERIORS

Scale: 1 Inch to 160 Chains



This Plat
of the Survey
of the
Thirteenth Guide Meridian West through Townships 53, 54,
55 and 56 N, the Fourteenth Standard Parallel North through
Ranges 104, 105, and part of 106 W., the part of North Bound-
aries of Townships 54 N. through Ranges 105 and 106 W.,
and the part of East Boundary of Township 55 N. Range 106 W.,
and
of the Resurvey
of the
Fourteenth Standard Parallel North through part of Range
103 W. and
of the Retracement
of the
Fourteenth Standard Parallel North through part of
Range 103 West of the Sixth Principal Meridian Wyoming
is strictly conformable to the field notes of the survey
thereof by
Richard E. Bandy U.S.D.S.
under his
Contract N^o 333
dated June 20, 1908
which have been examined, approved and filed in this
office
U.S. Surveyor General's Office
Cheyenne Wyoming
November 3, 1911

Stephen Robinson
Surveyor General

Surveys Designated	Amount M/s. Chs. Lks.	When Surveyed
Standard Lines	38 12 51	September 2, 1908-July 26, 1909
Resurvey Standard Lines	4 00 00	July 16, 1909-July 19, 1909
Retracement Standard Lines	2 01 64	July 16, 1909
Township Lines	6 00 00	Sept. 13, 1908-Sept. 28, 1908
Connecting Lines	6 91	July 26, 1909

Accepted by the Hon. Commissioner, Letter E, March 2, 1912

41.

1919

T. 55 N., R. 106 W., Sixth Principal Meridian, Wyoming, Homestead Entry Survey Links

Plat Accession Number(s)	Year(s) of Survey	
		Homestead Entry Survey No. 44 (Sections 23, 24, and 25)
5206	1911	https://www.wy.blm.gov/cadastral/homesteads/037-049/hes44.pdf
		Homestead Entry Survey No. 53 (Sections 24 and 25)
5215	1913	https://www.wy.blm.gov/cadastral/homesteads/050-099/hes53.pdf
		Homestead Entry Survey No. 74 (Sections 25 and 36)
5233	1913	https://www.wy.blm.gov/cadastral/homesteads/050-099/hes74.pdf
		Homestead Entry Survey No. 111 (Section 13)
5267	1915	https://www.wy.blm.gov/cadastral/homesteads/100-149/hes111.pdf
		Homestead Entry Survey No. 175 (Section 13)
5316	1917	https://www.wy.blm.gov/cadastral/homesteads/150-199/hes175.pdf
		Homestead Entry Survey No. 184 (Sections 10, 11, and 14)
5325	1917	https://www.wy.blm.gov/cadastral/homesteads/150-199/hes184.pdf

T. 55 N., R. 106 W., Sixth Principal Meridian, Wyoming, Homestead Entry Survey Links

Plat Accession Number(s)	Year(s) of Survey	
5363	1920	Homestead Entry Survey No. 228 (Section 12) <a data-bbox="751 540 1661 573" href="https://www.wy.blm.gov/cadastral/homesteads/200-255/hes228.pdf">https://www.wy.blm.gov/cadastral/homesteads/200-255/hes228.pdf
5364	1920	Homestead Entry Survey No. 230 (Section 34) <a data-bbox="751 703 1661 735" href="https://www.wy.blm.gov/cadastral/homesteads/200-255/hes230.pdf">https://www.wy.blm.gov/cadastral/homesteads/200-255/hes230.pdf