

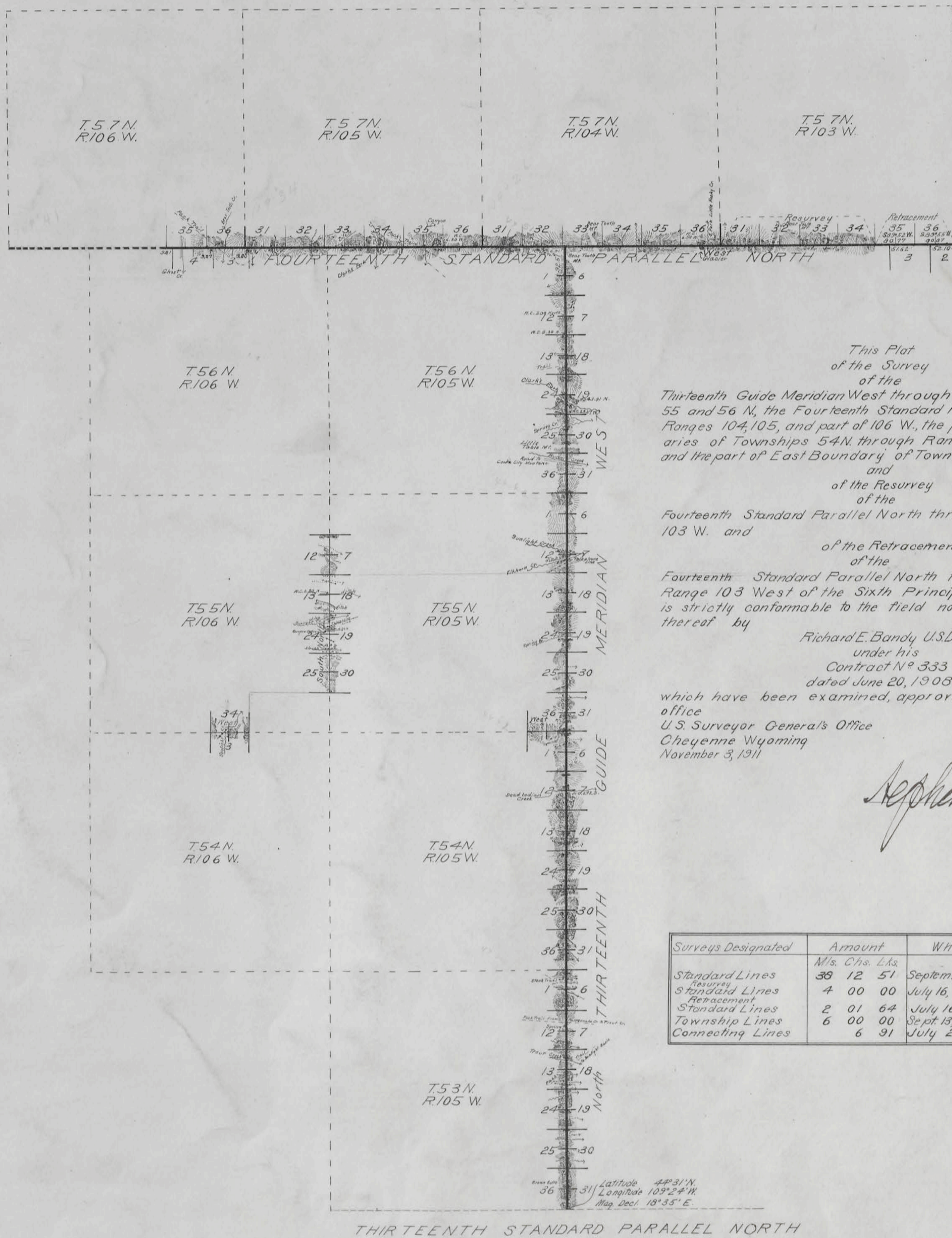
T. 56 N., R. 105 W., Sixth Principal Meridian, Wyoming, Field Note Links

Plat Accession Number(s)	Year(s) of Survey	Township Exterior Plats
1979	1908-09	https://www.wy.blm.gov/cadastral/countyplats/park/fieldnotes/ext1441.pdf
1979	1909	https://www.wy.blm.gov/cadastral/countyplats/park/fieldnotes/retext1441.pdf
		Yellowstone National Park Boundary
5963	1893	https://www.wy.blm.gov/cadastral/countyplats/fremont/fieldnotes/ynp_0013fn.pdf

8.

TOWNSHIP EXTERIORS

Scale: 1 Inch to 160 Chains



This Plat
of the Survey
of the
Thirteenth Guide Meridian West through Townships 53, 54,
55 and 56 N, the Fourteenth Standard Parallel North through
Ranges 104, 105, and part of 106 W., the part of North Bound-
aries of Townships 54 N. through Ranges 105 and 106 W.,
and the part of East Boundary of Township 55 N. Range 106 W.,
and
of the Resurvey
of the
Fourteenth Standard Parallel North through part of Range
103 W. and
of the Retracement
of the
Fourteenth Standard Parallel North through part of
Range 103 West of the Sixth Principal Meridian Wyoming
is strictly conformable to the field notes of the survey
thereof by

Richard E. Bandy U.S.D.S.
under his
Contract No. 333
dated June 20, 1908
which have been examined, approved and filed in this
office
U.S. Surveyor General's Office
Cheyenne Wyoming
November 3, 1911

Stephen Robinson
Surveyor General

Surveys Designated	Amount M/s. Chs. Lks.	When Surveyed
Standard Lines	38 12 51	September 2, 1908-July 26, 1909
Resurvey Standard Lines	4 00 00	July 16, 1909-July 19, 1909
Retracement Standard Lines	2 01 64	July 16, 1909
Township Lines	6 00 00	Sept. 13, 1908-Sept. 28, 1908
Connecting Lines	6 91	July 26, 1909

Accepted by the Hon. Commissioner, Letter E, March 2, 1912

41.

1919

DIAGRAM
OF THE
N.E. & S. BOUNDARIES
OF THE
PUBLIC FOREST RESERVATION
AND THE
FRAC.E. BOUNDARY
OF THE
YELLOWSTONE NATIONAL PARK
IN
WYOMING

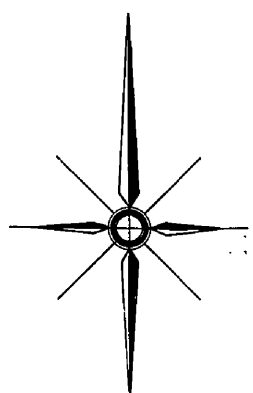
As surveyed by Philip M. Gallaher U.S. Deputy Surveyor Aug. 3rd to Oct. 22nd 1893, under his contract No. 263 dated Oct. 17, 1894.

Scale 1/2 in = 1 mile
 O indicates corners established
 + indicates proper points for corners but not established

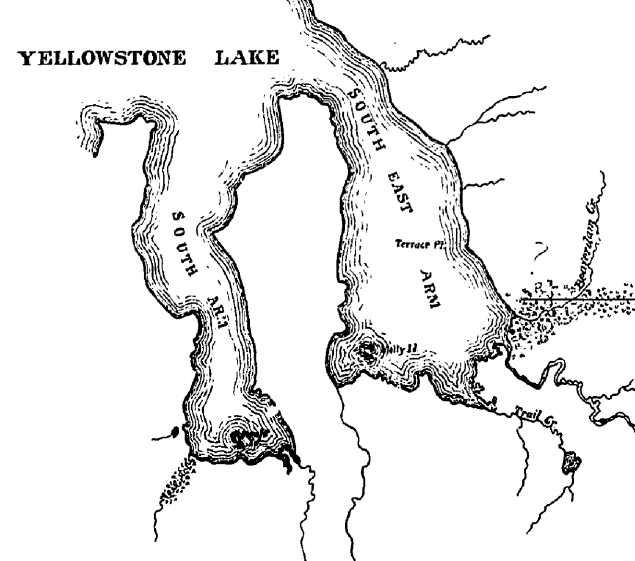
I certify that the above diagram of the N.E. & S. Boundaries of the Public Forest Reservation and the Frac.E. Boundary of the Yellowstone National Park in Wyoming, is strictly conformable to the field notes of the survey thereof on file in this office which have been examined and approved.

U.S. Sur. Gen's Office
 Helena Mont July 17, 1894.

Joseph H. Weil
 Sur. Gen.
 for Montana



YELLOWSTONE NATIONAL PARK



RESERVATION

PARK

FOREST

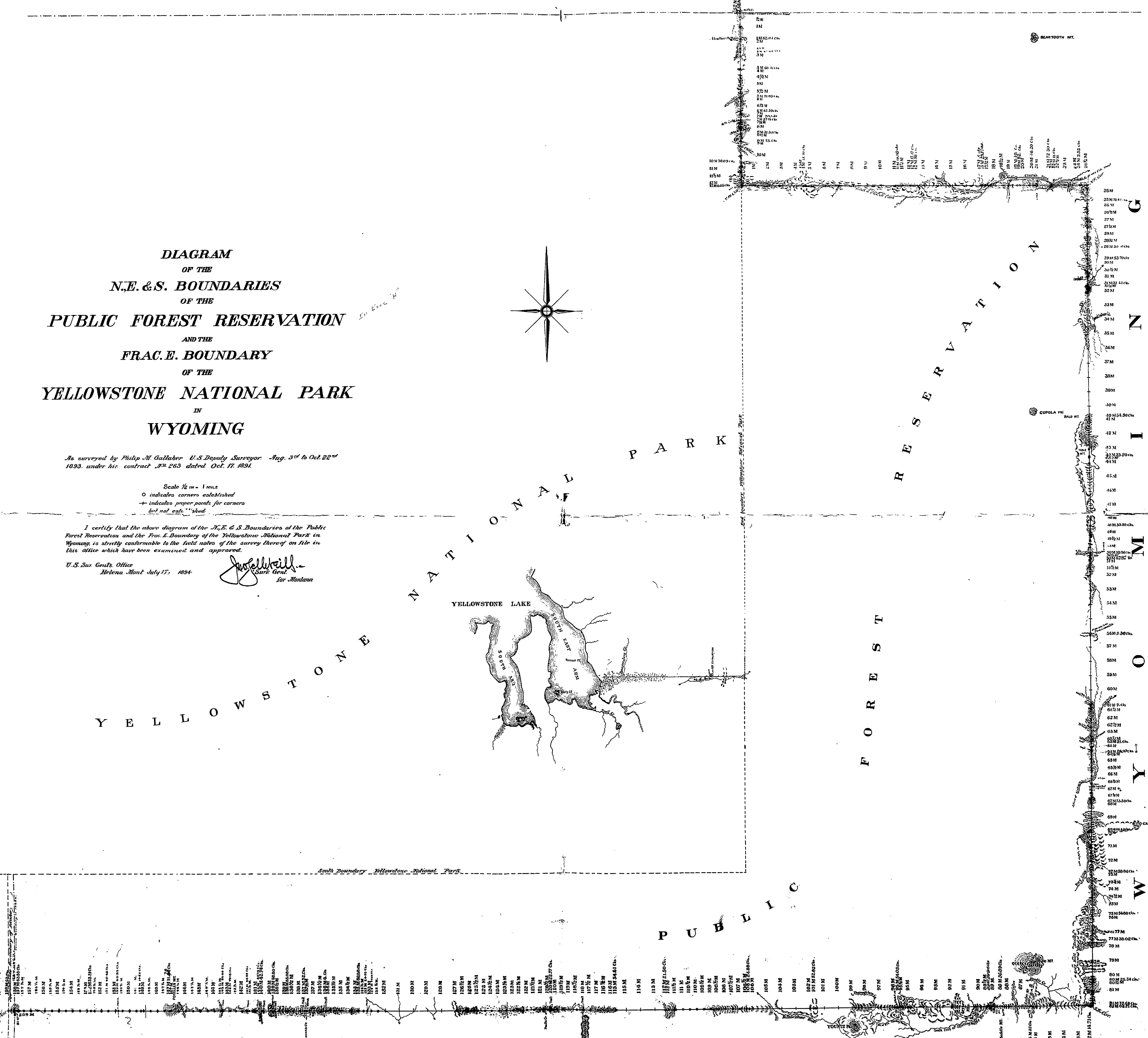
WYOMING

PUBLIC

W Y O M I N G

IDAHO

13



T. 56 N., R. 105 W., Sixth Principal Meridian, Wyoming, Homestead Entry Survey Links

Plat Accession Number(s)	Year(s) of Survey	
		Homestead Entry Survey No. 49 (Section 6)
5211	1911-13	https://www.wy.blm.gov/cadastral/homesteads/037-049/hes49.pdf
		Homestead Entry Survey No. 90 (Section 7)
5249	1917	https://www.wy.blm.gov/cadastral/homesteads/050-099/hes90.pdf
		Homestead Entry Survey No. 148 (Sections 25 and 36)
5297	1917	https://www.wy.blm.gov/cadastral/homesteads/100-149/hes148.pdf
		Homestead Entry Survey No. 173 (Sections 4, 9, and 10)
5314	1917	https://www.wy.blm.gov/cadastral/homesteads/150-199/hes173.pdf
		Homestead Entry Survey No. 181 (Sections 27 and 28)
5322	1917	https://www.wy.blm.gov/cadastral/homesteads/150-199/hes181.pdf
		Homestead Entry Survey No. 182 (Sections 26, 27, 34, and 35)
5323	1917	https://www.wy.blm.gov/cadastral/homesteads/150-199/hes182.pdf

T. 56 N., R. 105 W., Sixth Principal Meridian, Wyoming, Homestead Entry Survey Links

Plat Accession Number(s)	Year(s) of Survey	
5375	1922	Homestead Entry Survey No. 243 (Sections 10, 14, and 15) <a data-bbox="751 540 1667 573" href="https://www.wy.blm.gov/cadastral/homesteads/200-255/hes243.pdf">https://www.wy.blm.gov/cadastral/homesteads/200-255/hes243.pdf