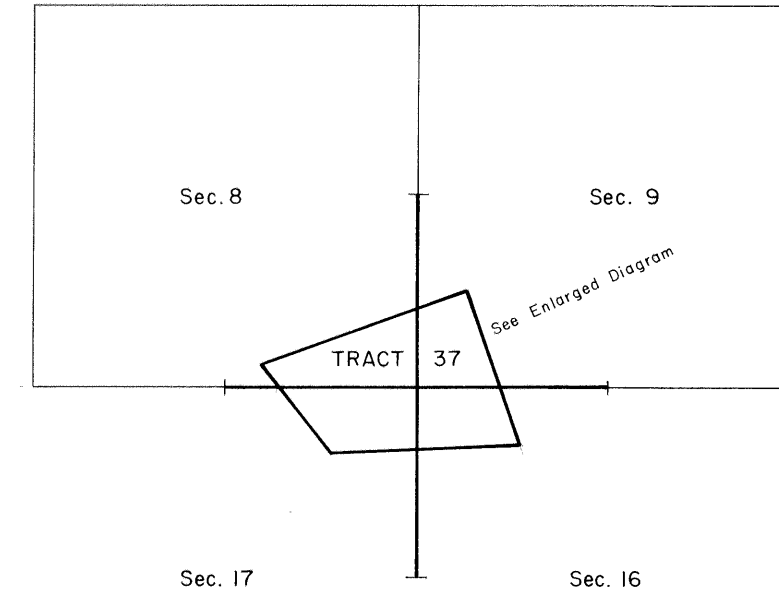
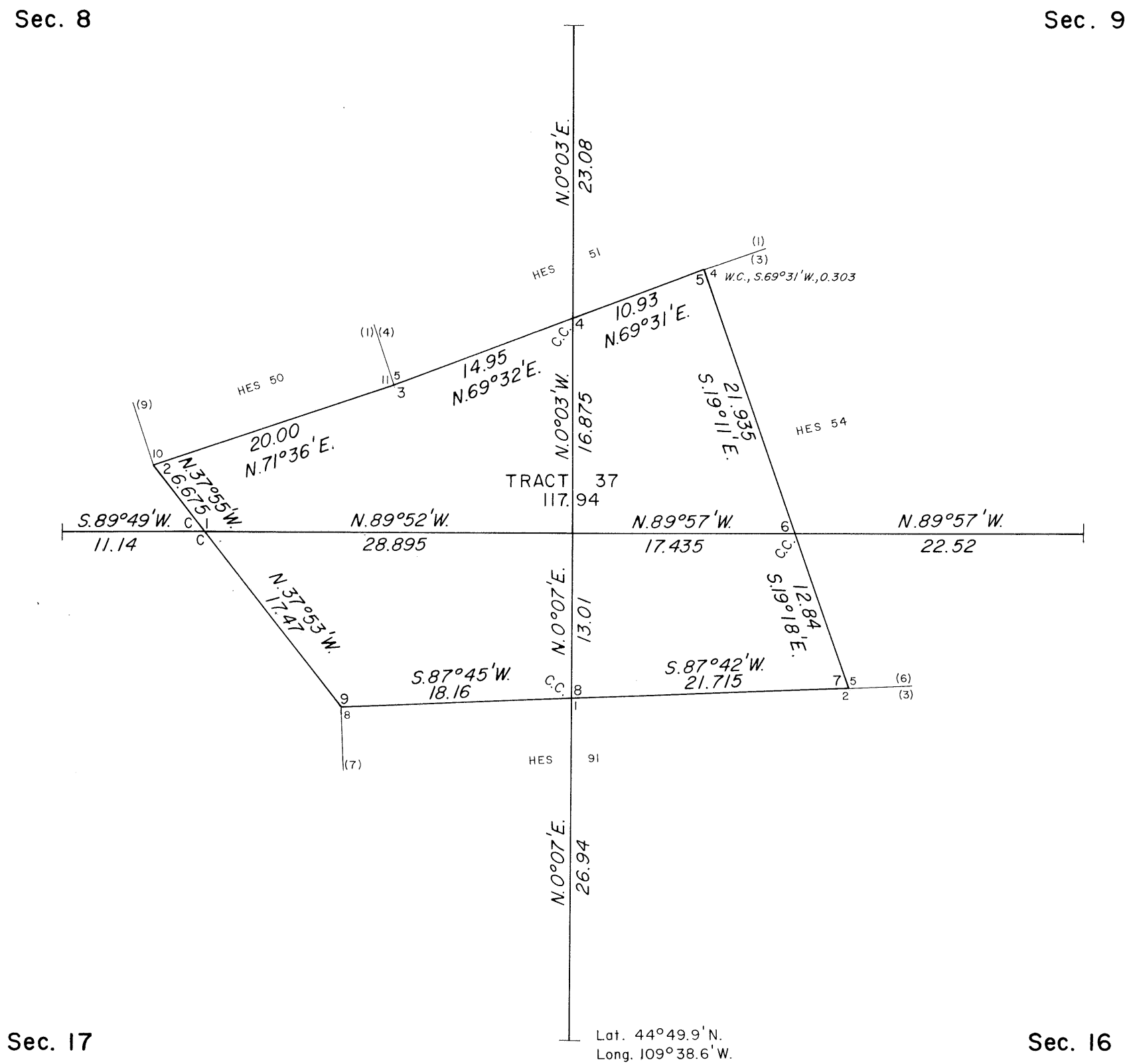


T. 56 N., R. 106 W., Sixth Principal Meridian, Wyoming, Field Note Links

Plat Accession Number(s)	Year(s) of Survey	
		Township Subdivision Plats
7621	1982	https://www.wy.blm.gov/cadastral/countyplats/park/fieldnotes/t56nr106w_gp440fn.pdf
1959	1909	https://www.wy.blm.gov/cadastral/countyplats/park/fieldnotes/t56nr106w_c333fn.pdf
		Yellowstone National Park Boundary
5963	1893	https://www.wy.blm.gov/cadastral/countyplats/fremont/fieldnotes/ynp_0013fn.pdf

TOWNSHIP 56 NORTH, RANGE 106 WEST, OF THE SIXTH PRINCIPAL MERIDIAN, WYOMING.
DEPENDENT RESURVEY, METES AND BOUNDS SURVEY OF TRACT 37

ENLARGED DIAGRAM



A history of surveys is contained in the field notes.

This plat represents the dependent resurvey of a portion of the subdivisional lines, and the metes and bounds survey of tract No. 37 (originally designated H.E.S. No. 178, cancelled by letter "E" dated November 16, 1925) designed to restore the corners in their true original locations according to the best available evidence, T. 56 N., R. 106 W., Sixth Principal Meridian, Wyoming.

Except as indicated hereon, the lottings and areas are as shown on the plat approved November 3, 1911, and accepted March 2, 1912.

Survey executed by William H. Herbst, Supervisory Cadastral Surveyor, beginning August 24, 1982, and completed August 26, 1982, pursuant to Special Instructions dated July 26, 1982, for Group No. 440, Wyoming.

UNITED STATES DEPARTMENT OF THE INTERIOR
BUREAU OF LAND MANAGEMENT

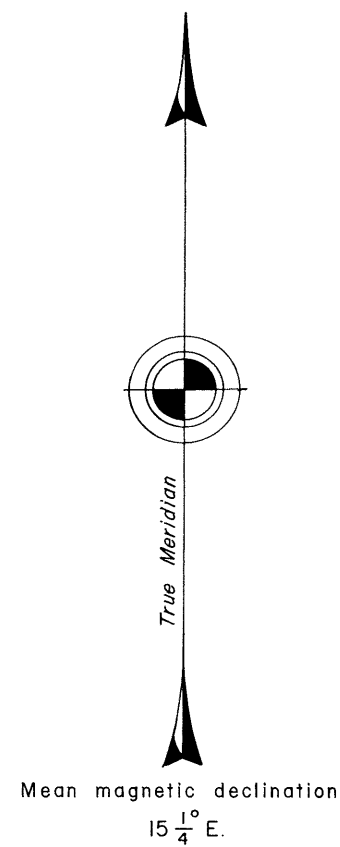
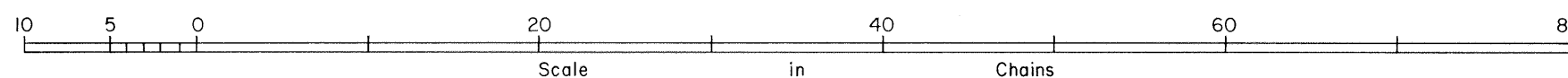
Cheyenne, Wyoming December 28, 1982

This plat is strictly conformable to the approved field notes, and the survey, having been correctly executed in accordance with the requirements of law and the regulations of this Bureau, is hereby accepted.

For the Director

Richard L. Paker

Chief Cadastral Surveyor



Fractional Township No 56 North, Range No 106 West of the Sixth Principal Meridian, Wyoming
Situated in Shoshone National Forest



Areas in Acres.	
Public Land	3721.36
Indian Reservation	
Indian Allotments	
Mineral Claims	
Water Surface	
Total Area	3721.36

Scale 40 Chains to an inch

Mean Magnetic Declination 18° 30' E.

Surveys Designated.	By Whom Surveyed.	Contract		Amount of Surveys		When Surveyed.	
		No.	Date	Mls. chs.	lks.	Begun.	Completed.
North Township Line	Richard E. Bandy	333	June 20, 1909	1 73	99	July 24, 1909	July 26, 1909
Subdivision Line	" "	" "	" "	14 37	88	July 27, 1909	August 4, 1909
Connecting Lines	" "	" "	" "	29 58	" "	" "	" "

The above map of Township No 56 North Range No 106 West of the Sixth Principal Meridian Wyoming is strictly conformable to the field notes of the survey thereof on file in this office, which have been examined and approved.

U.S. Surveyor General's Office,
 Cheyenne Wyoming November 3, 1911
Stephen Robinson
 Surveyor General.

5.6-106
 Accepted by the Hon. Commissioner in his letter "E" May 2, 1912
 Duplicate plat made under Wyo. Land Office, May 6th 1912

DIAGRAM
OF THE
N.E. & S. BOUNDARIES
OF THE
PUBLIC FOREST RESERVATION
AND THE
FRAC.E. BOUNDARY
OF THE
YELLOWSTONE NATIONAL PARK
IN
WYOMING

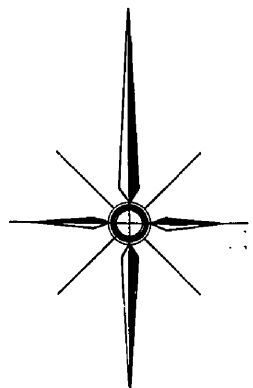
As surveyed by Philip M. Gallaher U.S. Deputy Surveyor Aug. 3rd to Oct. 22nd 1893, under his contract No. 263 dated Oct. 17, 1891.

Scale 1/2 in = 1 mile
 O indicates corners established
 + indicates proper points for corners but not established

I certify that the above diagram of the N.E. & S. Boundaries of the Public Forest Reservation and the Frac.E. Boundary of the Yellowstone National Park in Wyoming, is strictly conformable to the field notes of the survey thereof on file in this office which have been examined and approved.

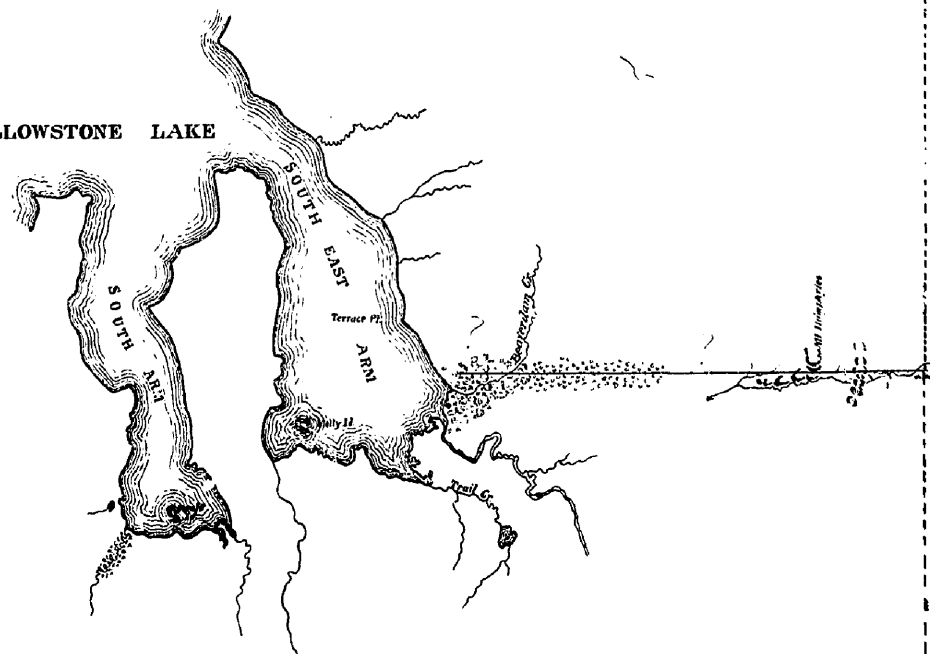
U.S. Sur. Gen's Office
 Helena Mont July 17, 1894.

Joseph H. Weil
 Sur. Gen.
 for Montana



YELLOWSTONE NATIONAL PARK

YELLOWSTONE LAKE



RESERVATION

PARK

FOREST

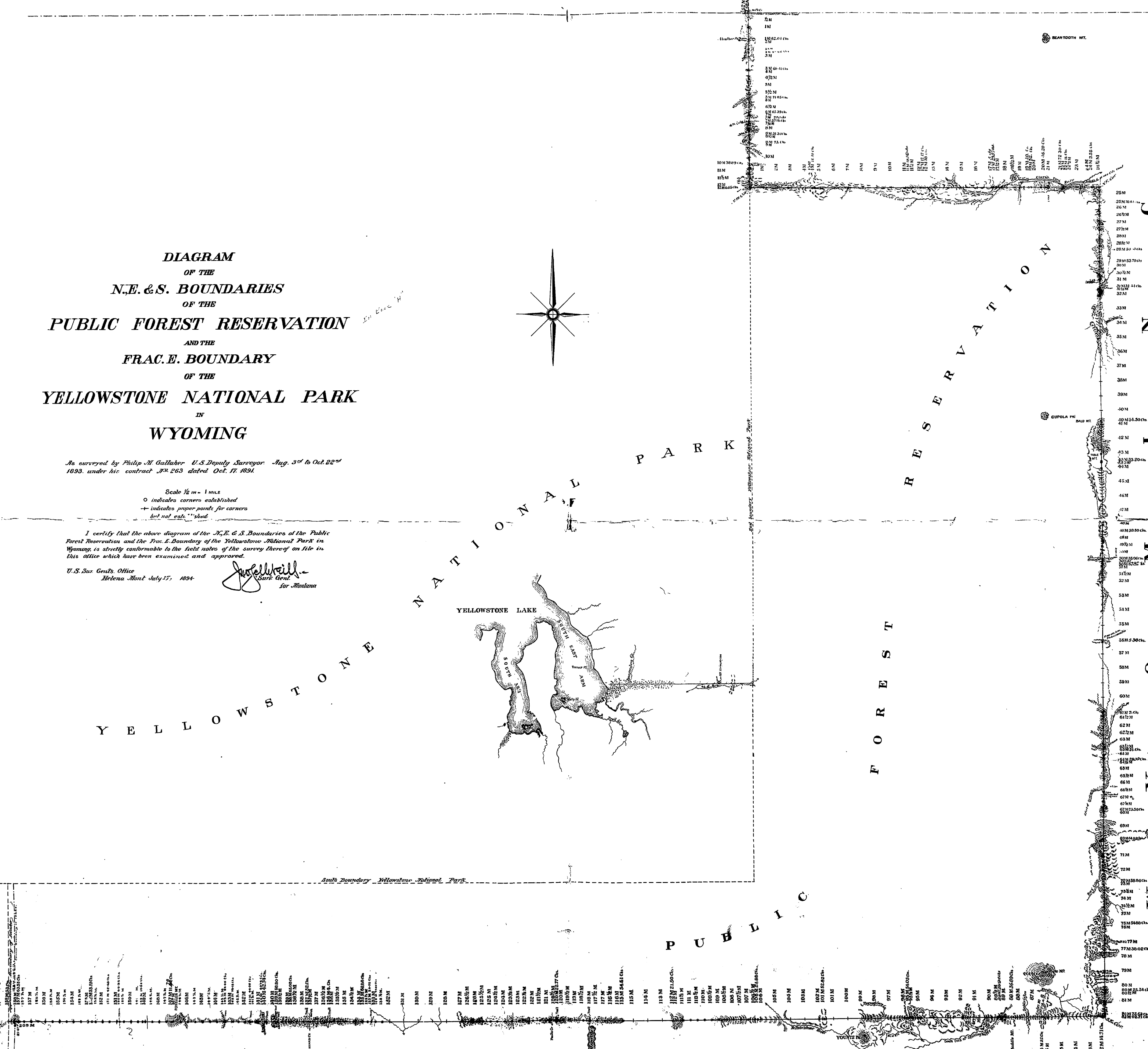
WYOMING

PUBLIC

WYOMING

IDAHO

13



T. 56 N., R. 106 W., Sixth Principal Meridian, Wyoming, Homestead Entry Survey Links

Plat Accession Number(s)	Year(s) of Survey	
		Homestead Entry Survey No. 40 (Section 4)
5204	1911	https://www.wy.blm.gov/cadastral/homesteads/037-049/hes40.pdf
		Homestead Entry Survey No. 49 (Section 1)
5211	1911-13	https://www.wy.blm.gov/cadastral/homesteads/037-049/hes49.pdf
		Homestead Entry Survey No. 50 (Sections 8 and 9)
5212	1912	https://www.wy.blm.gov/cadastral/homesteads/050-099/hes50.pdf
		Homestead Entry Survey No. 51 (Sections 8 and 9)
5213	1912	https://www.wy.blm.gov/cadastral/homesteads/050-099/hes51.pdf
		Homestead Entry Survey No. 52 (Sections 15 and 16)
5214	1912	https://www.wy.blm.gov/cadastral/homesteads/050-099/hes52.pdf
		Homestead Entry Survey No. 54 (Sections 9 and 16)
5216	1912	https://www.wy.blm.gov/cadastral/homesteads/050-099/hes54.pdf

T. 56 N., R. 106 W., Sixth Principal Meridian, Wyoming, Homestead Entry Survey Links

Plat Accession Number(s)	Year(s) of Survey	
		Homestead Entry Survey No. 90 (Section 12)
5249	1917	https://www.wy.blm.gov/cadastral/homesteads/050-099/hes90.pdf
		Homestead Entry Survey No. 91 (Sections 16 and 17)
5250	1914	https://www.wy.blm.gov/cadastral/homesteads/050-099/hes91.pdf
		Homestead Entry Survey No. 92 (Sections 15 and 16)
5251	1914	https://www.wy.blm.gov/cadastral/homesteads/050-099/hes92.pdf
		Homestead Entry Survey No. 177 (Sections 4 and 5)
5318	1917	https://www.wy.blm.gov/cadastral/homesteads/150-199/hes177.pdf
		Homestead Entry Survey No. 178 (Sections 8, 9, 15, and 16)
5319	1917	https://www.wy.blm.gov/cadastral/homesteads/150-199/hes178.pdf
		Homestead Entry Survey No. 179 (Sections 4 and 5)
5320	1917	https://www.wy.blm.gov/cadastral/homesteads/150-199/hes179.pdf

T. 56 N., R. 106 W., Sixth Principal Meridian, Wyoming, Homestead Entry Survey Links

Plat Accession Number(s)	Year(s) of Survey	
		Homestead Entry Survey No. 180 (Sections 9, 10, 15, and 16)
5321	1917	https://www.wy.blm.gov/cadastral/homesteads/150-199/hes180.pdf
		Homestead Entry Survey No. 227 (Section 5)
5362	1920	https://www.wy.blm.gov/cadastral/homesteads/200-255/hes227.pdf