

T. 58 N., R. 109 W., Sixth Principal Meridian, Wyoming, Field Note Links

Plat Accession Number(s)	Year(s) of Survey	
		Yellowstone National Park Boundary
5957	1931-32	https://www.wy.blm.gov/cadastral/countyplats/park/fieldnotes/ynp_0007fn.pdf
-	1923	https://www.wy.blm.gov/cadastral/countyplats/park/fieldnotes/t58nr109w_gp233fn_MT.pdf
5953	1903	https://www.wy.blm.gov/cadastral/countyplats/park/fieldnotes/ynp_0003fn.pdf
5952	1901	https://www.wy.blm.gov/cadastral/countyplats/park/fieldnotes/ynp_0002fn.pdf
5963	1893	https://www.wy.blm.gov/cadastral/countyplats/fremont/fieldnotes/ynp_0013fn.pdf
		State Boundary
-	1936	https://www.wy.blm.gov/cadastral/countyplats/park/fieldnotes/resnbmp57-63.pdf
-	1882	https://www.wy.blm.gov/cadastral/countyplats/crook/fieldnotes/nb_exam.pdf
5965	1879-80	https://www.wy.blm.gov/cadastral/countyplats/park/fieldnotes/nb_mp50-99.pdf

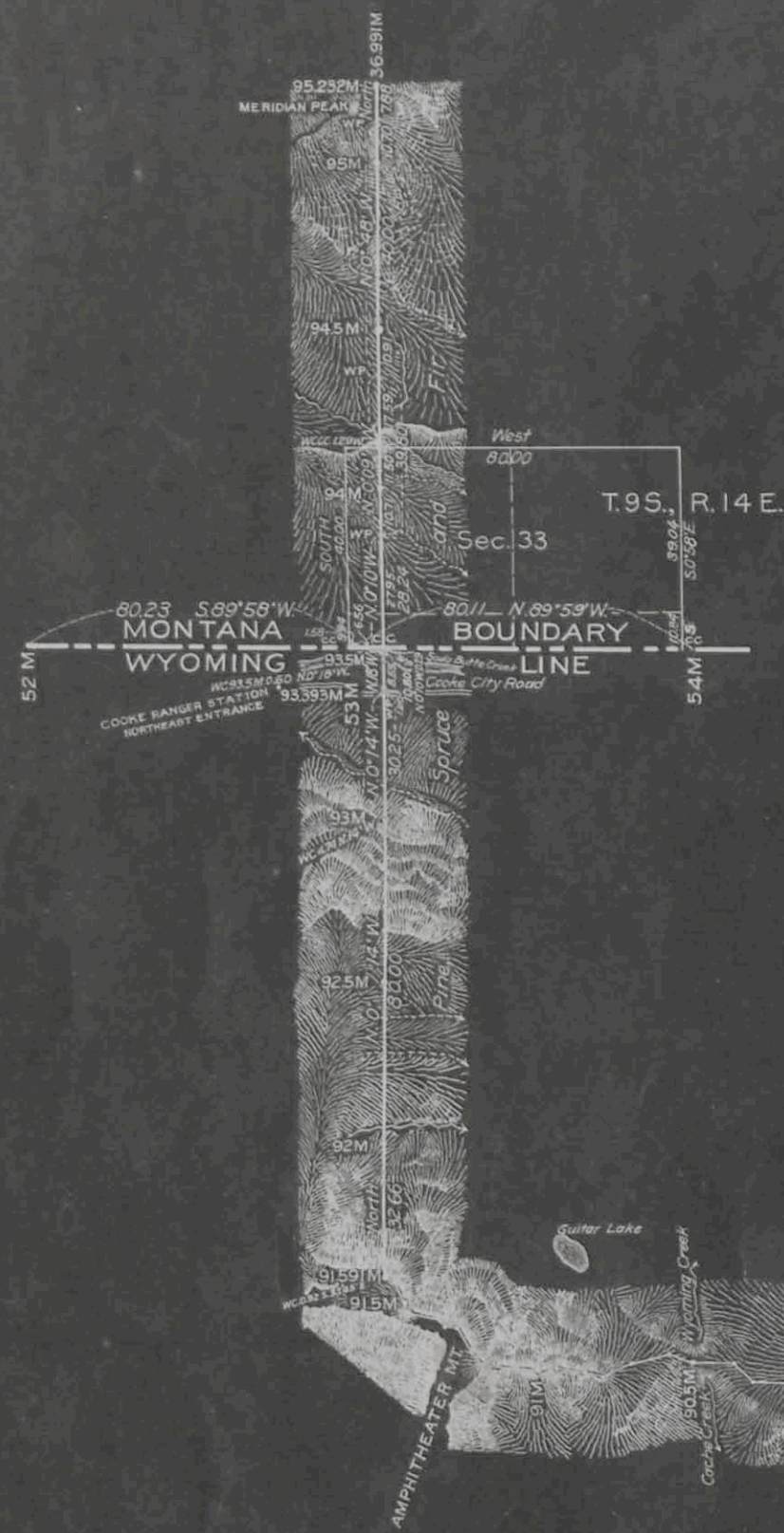
EAST BOUNDARY YELLOWSTONE NATIONAL PARK, WYOMING

REVISION IN ACCORDANCE WITH THE ACT OF MARCH 1, 1929

IN SIX SHEETS

Scale: 40 Chains to an Inch

Table of Courses and Distances from Mile Post 84 to Mile Post 91.591



Mile Post	Course	Distance
85th M	N 2°15' W	1.95
	N 9°15' E	7.91
	N 56°00' E	0.65
	N 10°17' E	0.53
	N 11°30' W	0.76
86th M	N 2°00' E	8.14
	N 7°37' W	24.12
	N 25°00' E	7.74
	N 6°15' W	4.37
	N 31°15' W	1.77
87th M	N 2°15' W	1.95
	N 24°30' W	16.82
	N 75°15' W	16.73
	N 55°15' W	7.05
	N 46°15' W	1.26
88th M	N 28°23' W	27.74
	N 46°56' W	5.92
	N 32°40' W	6.44
	N 6°09' W	6.92
	N 24°06' W	13.17
89th M	N 62°00' W	0.66
	N 52°15' W	7.34
	N 30°21' W	7.98
	N 42°53' W	15.09
	N 22°55' W	6.93
90th M	N 15°00' W	3.85
	N 51°57' W	6.50
	N 26°53' W	12.55
	N 82°00' W	2.46
	N 61°35' W	3.20
91st M	N 69°15' W	7.04
	S 61°05' W	0.73
	S 89°45' W	7.26
	N 45°23' W	6.04
	N 65°45' W	10.93
92nd M	N 54°37' W	12.40
	N 45°05' W	4.76
	N 29°30' W	7.54
	S 64°45' W	3.28
	N 32°30' W	2.13

BY WHOM SURVEYED	GROUP		MILEAGE		WHEN SURVEYED	
	No.	DATE	MLS.	CHS.	BEGUN	COMPLETED
William R. Bandy	G.L.O.	April 14, 1931	89	58.58	Aug 9, 1931	Sept. 16, 1932

DEPARTMENT OF THE INTERIOR
 GENERAL LAND OFFICE
 Washington, D. C., June 7, 1934

The survey represented by this plat having been correctly executed in accordance with the requirements of law and the regulations of this office is hereby accepted

J. H. Bandy
 Acting Assistant Commissioner

Office of U.S. Supervisor of Surveys
 Denver, Colorado, Jan. 17, 1934.

The above plat of a portion of the East Boundary of the Yellowstone National Park, Wyoming, is strictly conformable to the field notes of the survey thereof which have been examined and approved

Walter Johnson
 Supervisor of Surveys

PLAT

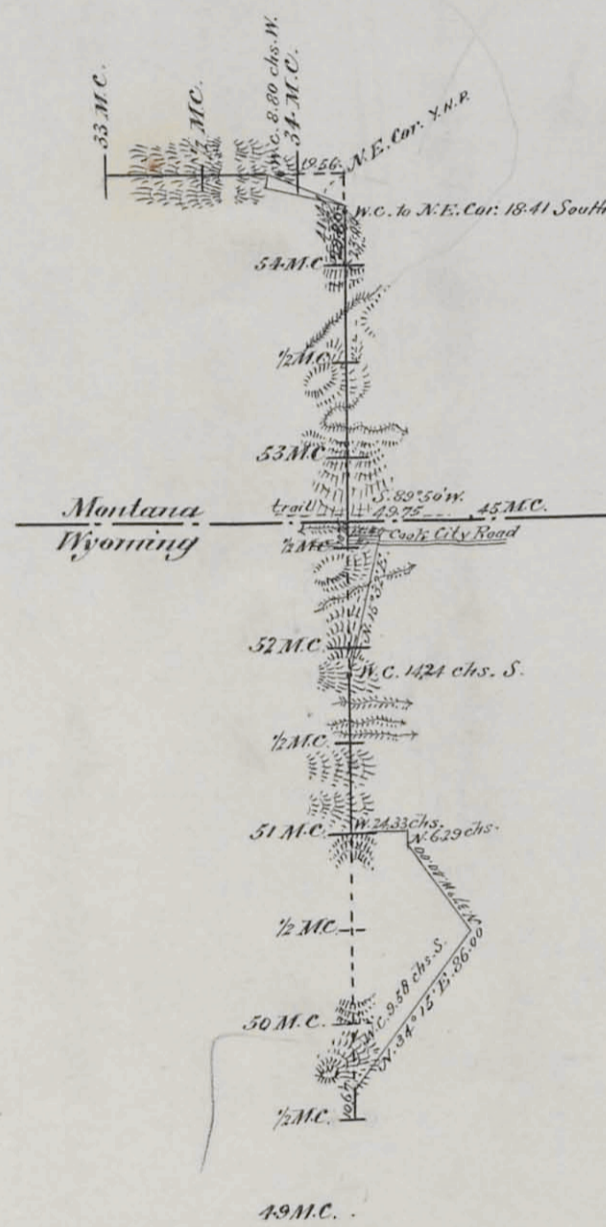
of fractional East and North Boundaries
of the

YELLOWSTONE NATIONAL PARK

Surveyed by J. Scott Harrison, Examiner of Surveys, Sept. 24- Oct. 7, 1903,
under his instructions from Com. Civil Land Office, dated Sept. 11, 1903.

Scale: 1 inch = 1 Mile.

RECEIVED S. G. O.
JUN 10 1904
CHEYENNE, WYO.



Department of the Interior,
General Land Office.
Washington, D.C., June 6, 1904.

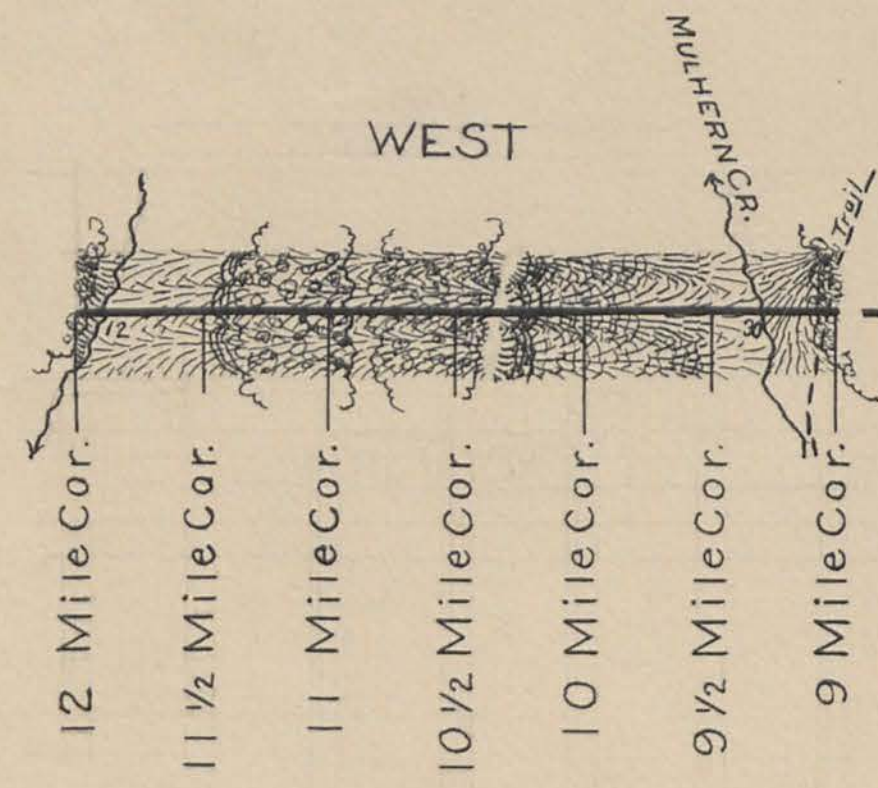
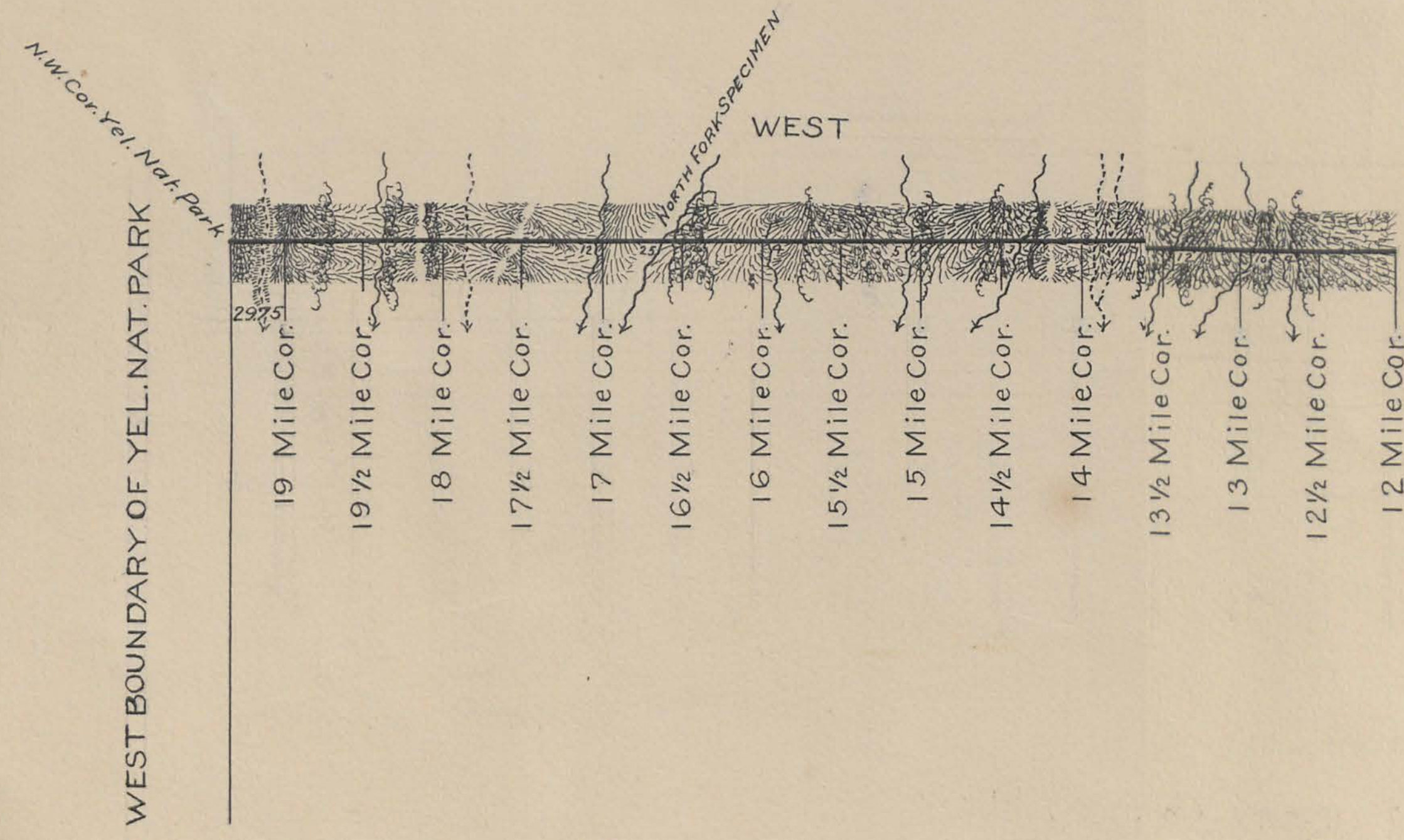
The above plat of the fractional East Boundary of the Yellowstone National Park,
from the Fiftieth Mile Corner to the North East Corner; and the completion of the North
Boundary from the 33 mile Monument to the North East Corner, is strictly conformable
to the field notes of the survey thereof on file in this office, which have been examined
and approved.

J.S.H.

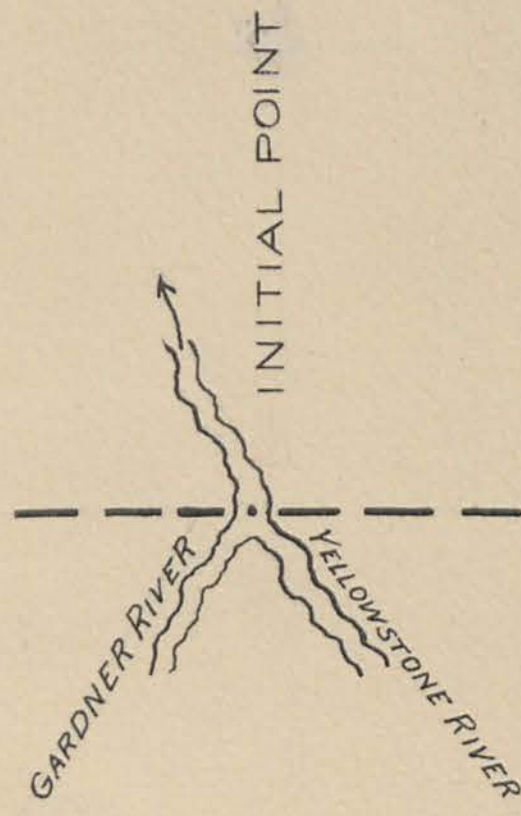
J. H. Finckle
Acting Commissioner.

NORTH BOUNDARY of the Yellowstone National Park Surveyed by Edward F. Stahle

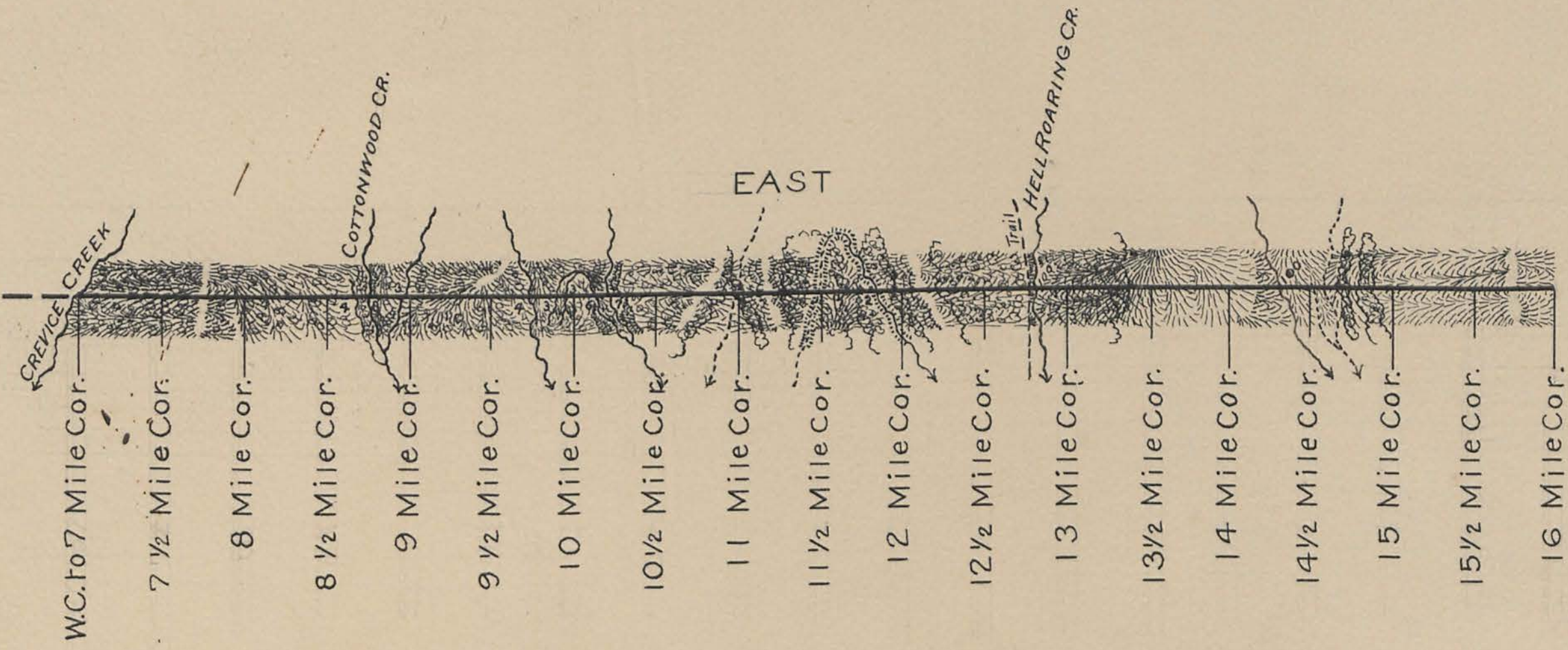
Scale: 1 inch = 1 mile



Surveyed by J. Milton Fowble in 1897



Surveyed by T. Milton Fowble in 1897



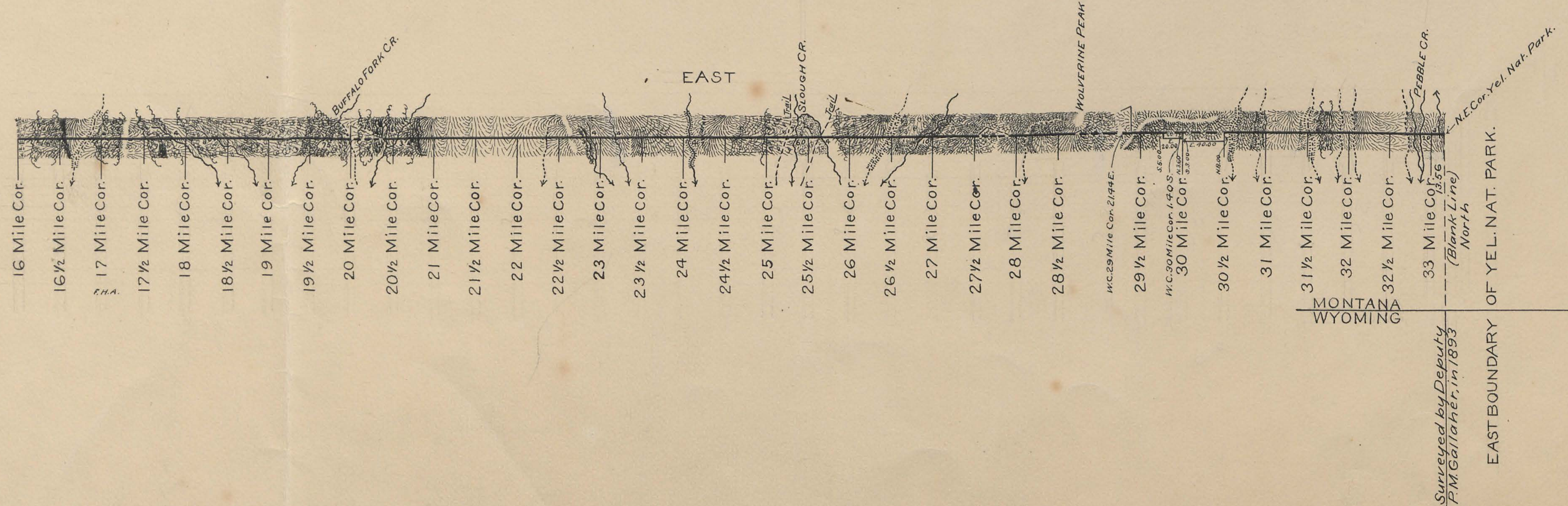
AWS.

U.S. General Land Office,
Washington, D.C., Oct. 18, 1902.

This Plat of the North Boundary of the Yellowstone National Park, is strictly conformable to the field notes of survey thereof by E. F. Stahle, U.S. Surveyor, under his contract dated April 14, 1901, and instructions dated August 16, 1901, which field notes have been approved and filed in this office.

Dunge Hermann
Commissioner.

RECEIVED S. G. O.
OCT 30 1902
CHEYENNE, WYO.



North Bdy. Yellowstone N.P.

measured length 4246.56

measured length N. Bdy. of Wyo. within park = 4246.56chs.

North Bdy. Wyoming

	COURSE		DISTANCE	LATITUDES		DEPARTURES	
				N.	S.	E.	W.
E	Bdy	South	4814.54		4814.54		
S	"	West	4163.41				4163.41
W	"	North	4785.44	4785.44			
N	"	East	4246.56			4246.56	
	convergency					approx. 48.00	
				4785.44	4814.54	4294.56	4163.41

4785.44 4163.41
Error in lat 29.10 131.15

West Bdy. Yellowstone N.P.

measured length W. Bdy. Wyo. within park 4785.44

West Bdy. Wyoming

M.P. 0

M.P. 277 + 7266

656

M.P. 53

M.C. 52

51.10chs.

This intersection determined by Lyman, Mont. office in 1923 verified by Bandy 1932

Revised bdy. sur'd of Park in Wyo. = 48,14.54chs.

67,010 Acres

by W. R. Bandy 1932

Orig. park area in Wyo. by calculation 1,989,049.44 Acs.
addition on E. 67,009.88
2,056,059.32
Sum of 2 exclusions on E. 48,416.62
2,007,642.70

Mont. calc. on NE 2449.2
additions } on NW 26,004.7
 } on N 6,112.7
orig. on N. 63,292.6
" " W. 50,817.0
Ida. orig. 35,783.6

32,341 Acs.

16,076 Ac.

Measured length orig. east bdy.

ORIG. East Bdy Yellowstone N.P.

Measured length S. Bdy of park in Wyo. = 4163.41 chs.

65.02 625.02 W E 3538.39chs.

South Bdy. Yellowstone Park

603.44chs

421.10chs.

INITIAL POINT

M.P. 7 1722chs

M.P. 218

M.P. 7 1839

M.P. 7 1844

M.P. 7 1844

M.P. 7 1844

M.P. 7 1844

M.P. 7 1844

M.P. 7 1844

M.P. 7 1844

M.P. 7 1844

M.P. 7 1844

M.P. 7 1844

M.P. 7 1844

M.P. 7 1844

This connection determined by Maxwell, Idaho office in 1928 verified by Lonhart Wyo. office in 1939

DIAGRAM
OF THE
N.E. & S. BOUNDARIES
OF THE
PUBLIC FOREST RESERVATION
AND THE
FRAC.E. BOUNDARY
OF THE
YELLOWSTONE NATIONAL PARK
IN
WYOMING

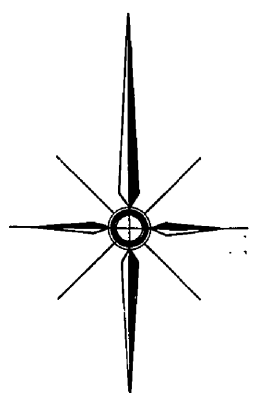
As surveyed by Philip M. Gallaher U.S. Deputy Surveyor Aug. 3rd to Oct. 22nd 1893, under his contract No. 263 dated Oct. 17, 1894.

Scale 1/2 in = 1 mile
 O indicates corners established
 + indicates proper points for corners but not established

I certify that the above diagram of the N.E. & S. Boundaries of the Public Forest Reservation and the Frac.E. Boundary of the Yellowstone National Park in Wyoming, is strictly conformable to the field notes of the survey thereof on file in this office which have been examined and approved.

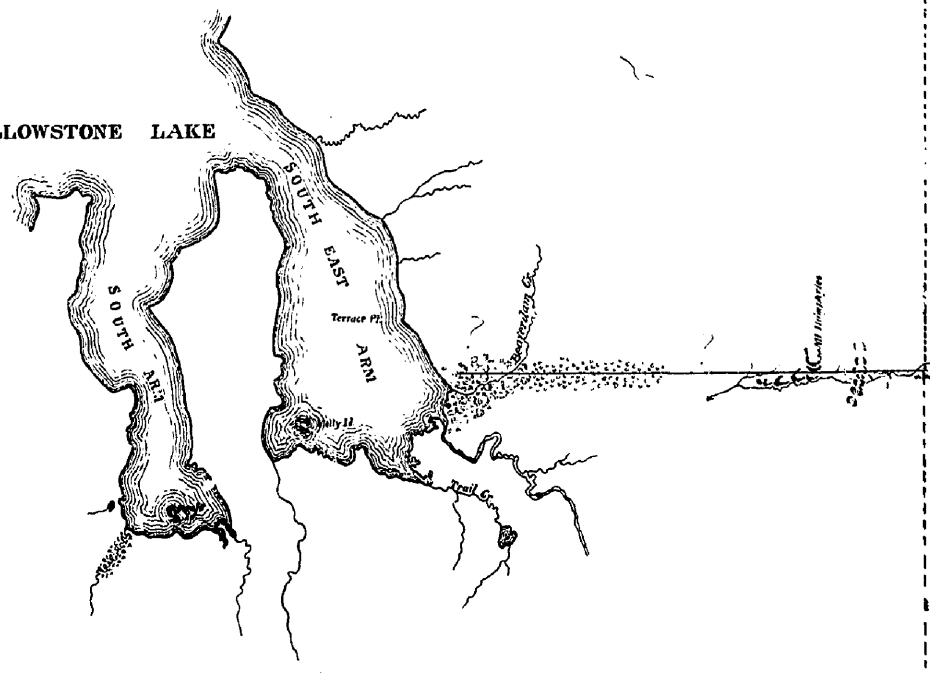
U.S. Sur. Gen's Office
 Helena Mont July 17, 1894.

Joseph H. Weil
 Sur. Gen.
 for Montana



YELLOWSTONE NATIONAL PARK

YELLOWSTONE LAKE



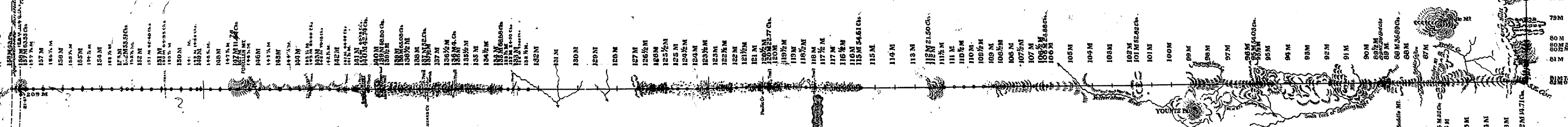
FOREST RESERVATION

PUBLIC

W Y O M I N G

13 I D A H O

25M
26M
27M
28M
29M
30M
31M
32M
33M
34M
35M
36M
37M
38M
39M
40M
41M
42M
43M
44M
45M
46M
47M
48M
49M
50M
51M
52M
53M
54M
55M
56M
57M
58M
59M
60M
61M
62M
63M
64M
65M
66M
67M
68M
69M
70M
71M
72M
73M
74M
75M
76M
77M
78M
79M
80M
81M
82M
83M
84M
85M
86M
87M
88M
89M
90M
91M
92M
93M
94M
95M
96M
97M
98M
99M
100M



T. 58 N., R. 109 W., Sixth Principal Meridian, Wyoming, Mineral Survey Links

Plat Accession Number(s)	Year(s) of Survey	Mineral Survey No. 40C
5417	1884	https://www.wy.blm.gov/cadastral/mineralsurvey/001-049/ms40c.pdf