

## Yellowstone National Park, East Boundary

Plat Accession Number(s)	Year(s) of Survey	
5962	1931-32	<a href="https://www.wy.blm.gov/cadastral/countyplats/teton/fieldnotes/ynp_0012fn.pdf">https://www.wy.blm.gov/cadastral/countyplats/teton/fieldnotes/ynp_0012fn.pdf</a>
5961	1931-32	<a href="https://www.wy.blm.gov/cadastral/countyplats/park/fieldnotes/ynp_0011fn.pdf">https://www.wy.blm.gov/cadastral/countyplats/park/fieldnotes/ynp_0011fn.pdf</a>
5960	1931-32	<a href="https://www.wy.blm.gov/cadastral/countyplats/park/fieldnotes/ynp_0010fn.pdf">https://www.wy.blm.gov/cadastral/countyplats/park/fieldnotes/ynp_0010fn.pdf</a>
5959	1931-32	<a href="https://www.wy.blm.gov/cadastral/countyplats/park/fieldnotes/ynp_0009fn.pdf">https://www.wy.blm.gov/cadastral/countyplats/park/fieldnotes/ynp_0009fn.pdf</a>
5958	1931-32	<a href="https://www.wy.blm.gov/cadastral/countyplats/park/fieldnotes/ynp_0008fn.pdf">https://www.wy.blm.gov/cadastral/countyplats/park/fieldnotes/ynp_0008fn.pdf</a>
5957	1931-32	<a href="https://www.wy.blm.gov/cadastral/countyplats/park/fieldnotes/ynp_0007fn.pdf">https://www.wy.blm.gov/cadastral/countyplats/park/fieldnotes/ynp_0007fn.pdf</a>
-	1923	<a href="https://www.wy.blm.gov/cadastral/countyplats/park/fieldnotes/t58nr109w_gp233fn_MT.pdf">https://www.wy.blm.gov/cadastral/countyplats/park/fieldnotes/t58nr109w_gp233fn_MT.pdf</a>
5955	1908	<a href="https://www.wy.blm.gov/cadastral/countyplats/park/fieldnotes/ynp_0005fn.pdf">https://www.wy.blm.gov/cadastral/countyplats/park/fieldnotes/ynp_0005fn.pdf</a>
5954	1903	<a href="https://www.wy.blm.gov/cadastral/countyplats/park/fieldnotes/ynp_0004fn.pdf">https://www.wy.blm.gov/cadastral/countyplats/park/fieldnotes/ynp_0004fn.pdf</a>
5953	1903	<a href="https://www.wy.blm.gov/cadastral/countyplats/park/fieldnotes/ynp_0003fn.pdf">https://www.wy.blm.gov/cadastral/countyplats/park/fieldnotes/ynp_0003fn.pdf</a>
5963	1893	<a href="https://www.wy.blm.gov/cadastral/countyplats/fremont/fieldnotes/ynp_0013fn.pdf">https://www.wy.blm.gov/cadastral/countyplats/fremont/fieldnotes/ynp_0013fn.pdf</a>

North Bdy. Yellowstone N.P.

measured length 4246.56

measured length N. Bdy. of Wyo. within park = 4246.56chs.

North Bdy. Wyoming

	COURSE		DISTANCE	LATITUDES		DEPARTURES	
				N.	S.	E.	W.
E	Bdy	South	4814.54		4814.54		
S	"	West	4163.41				4163.41
W	"	North	4785.44	4785.44			
N	"	East	4246.56			4246.56	
	convergency					approx. 48.00	
				4785.44	4814.54	4294.56	4163.41

4785.44 4163.41  
Error in lat 29.10 131.15

West Bdy. Yellowstone N.P.

measured length W. Bdy. Wyo. within park 4785.44

West Bdy. Wyoming

Orig. park area in Wyo. by calculation 1,989,049.44 Acs.  
addition on E. 67,009.88  
2,056,059.32  
Sum of 2 exclusions on E. 48,416.62  
2,007,642.70

Mont. calc. on NE 2449.2  
additions } on NW 26,004.7  
              } on N 6,112.7  
orig. on N. 63,292.6  
" " W. 50,817.0  
Ida. orig. 35,783.6

measured length S. Bdy of park in Wyo. = 4163.41 chs.

South Bdy. Yellowstone Park

This intersection determined by Lyman, Mont. office in 1923 verified by Bandy 1932

Revised bdy. sur'd of Park in Wyo. = 48,145.54chs.

32,341 Acs.

67,010 Acres

by W. R. Bandy 1932

16,076 Ac.

measured length orig. east bdy.

ORIG. East Bdy Yellowstone N.P.

INITIAL POINT

This connection determined by Maxwell, Idaho office in 1928 verified by Lonhart Wyo. office in 1939

M.P. 0.0  
M.P. 277 + 7266

656  
51.10 chs.  
M.P. 53  
M.C. 52

65.02  
625.02 W  
E 3538.39chs.  
INITIAL PT.  
M.P. 7  
722chs  
M.P. 218

603.44chs  
4211.10chs.  
M.P. 7 1/2  
M.P. 218

# EAST BOUNDARY YELLOWSTONE NATIONAL PARK, WYOMING

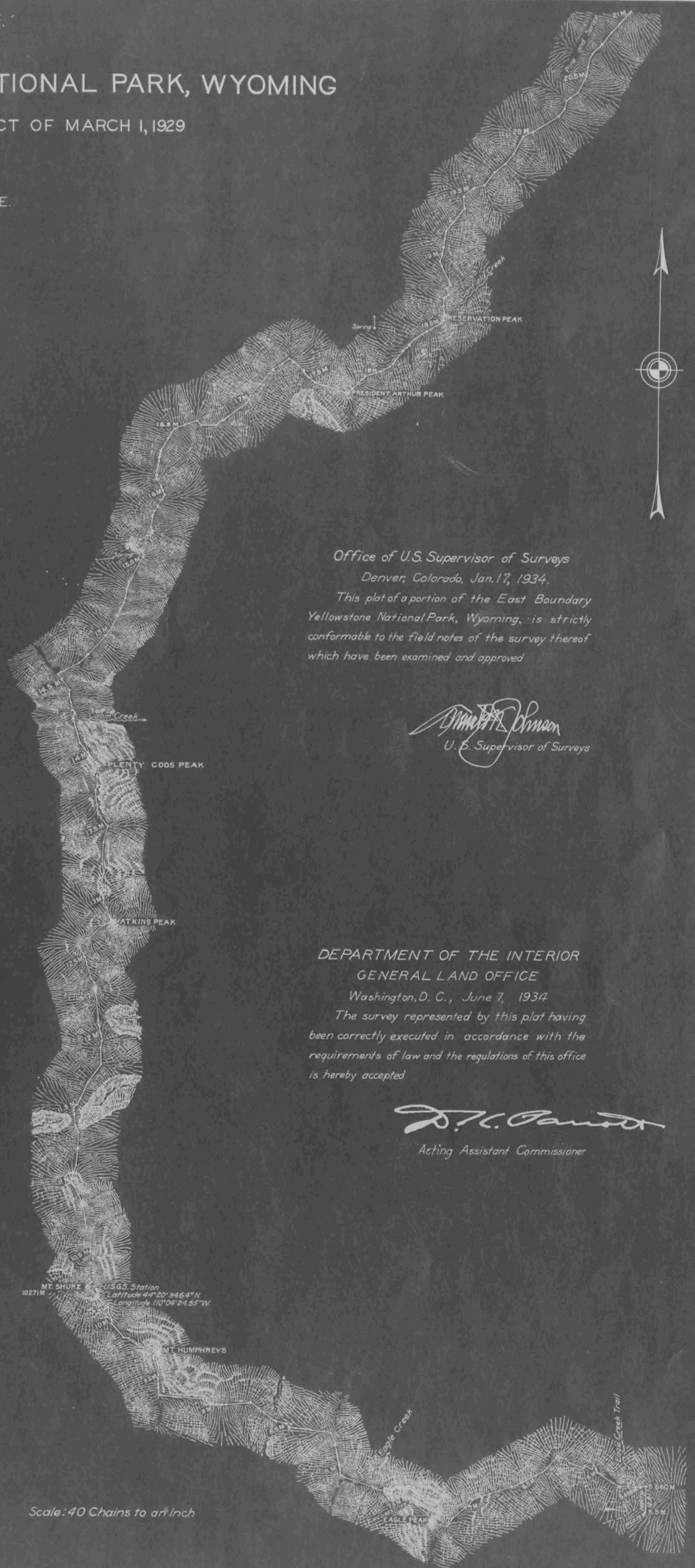
REVISION IN ACCORDANCE WITH THE ACT OF MARCH 1, 1929

IN SIX SHEETS

Surveyed By W. R. Bandy, U. S. C. E.

Table of Courses and Distances from Mile Posts 5.660 to 21

6th M S. 85°00'W. 3.06 S. 81°15'W. 2.98 N. 65°30'W. 2.83 S. 68°30'W. 4.65 N. 64°45'W. 3.89 N. 51°00'W. 6.96 N. 12°15'W. 0.93	7th M N. 12°15'W. 1.08 N. 53°30'W. 2.61 S. 35°00'W. 1.39 N. 69°00'W. 3.92 S. 32°45'W. 1.02 N. 75°00'W. 7.36 N. 34°15'W. 3.29 N. 81°30'W. 4.64 S. 40°15'W. 11.08 S. 65°00'W. 11.11 S. 81°45'W. 4.92 S. 70°45'W. 12.19 S. 69°00'W. 9.43 S. 28°05'W. 3.03 S. 47°00'W. 1.93	8th M S. 47°00'W. 8.02 S. 33°50'W. 5.52 N. 77°45'W. 3.66 N. 61°45'W. 4.18 N. 30°45'W. 4.63 N. 52°30'W. 13.04 N. 71°15'W. 16.73 N. 32°15'W. 2.67 N. 11°30'W. 31.6	9th M N. 11°30'W. 11.33 N. 21°25'W. 5.92 N. 68°00'W. 3.03 N. 84°20'W. 17.09 N. 54°00'W. 2.63 N. 71°51'W. 5.47 N. 54°00'W. 15.26 S. 60°36'W. 12.01 N. 83°00'W. 2.15 S. 84°30'W. 2.77 N. 70°45'W. 2.94	10th M N. 67°45'W. 3.47 N. 27°45'W. 3.29 N. 81°15'W. 21.39 N. 61°30'W. 4.94 N. 23°15'W. 1.63 N. 1°00'W. 2.00 N. 6°00'W. 3.28 N. 11°32'W. 7.69 N. 8°30'E. 1.12 N. 6°36'E. 1.91 N. 66°15'W. 5.83 N. 67°15'W. 4.61 N. 42°30'W. 5.22 N. 85°15'W. 2.94 N. 42°45'W. 0.00 N. 19°00'W. 2.58	11th M N. 17°30'W. 3.22 N. 7°37'W. 3.32 N. 44°00'W. 0.85 N. 46°28'W. 6.30 N. 39°11'E. 2.91 N. 18°15'W. .90 N. 0°30'E. 14.50 N. 2°45'E. 10.80 N. 42°00'W. 2.46 N. 18°45'W. 4.20 N. 7°00'W. 7.71 N. 35°45'W. 6.31 N. 22°00'W. 5.71 N. 43°00'W. 1.82 N. 28°06'E. 1.39	12th M N. 16°00'E. 7.82 N. 6°28'E. 0.22 N. 2°05'W. 7.85 N. 17°00'W. 5.19 N. 4°35'W. 5.13 N. 13°03'W. 1.72 N. 15°00'E. 1.75 N. 34°06'E. 2.32 N. 36°06'E. 3.65 N. 16°07'E. 6.66 N. 36°10'E. 10.93 N. 4°00'E. 9.32 N. 15°30'E. 3.68 N. 9°30'W. 4.59	13th M N. 10°30'W. 6.79 N. 13°30'W. 15.61 N. 43°00'W. .85 N. 17°45'W. 3.43 N. 32°30'W. 2.12 N. 13°45'W. 11.50 N. 23°18'W. 6.30 N. 42°15'E. 5.62 N. 79°15'E. 1.49 N. 51°22'E. 0.45 N. 56°31'E. 4.06 N. 71°45'E. 1.60 N. 38°30'W. .63 N. 14°00'W. 2.54 N. 31°45'W. 4.58 N. 1°02'W. 2.50 NORTH 1.14 N. 22°15'W. 1.09	14th M N. 22°15'W. 3.04 N. 78°45'E. .72 N. 40°0'W. 2.44 N. 22°00'W. 2.15 N. 25°30'E. 4.89 N. 12°30'W. 5.34 N. 15°5'E. 11.39 N. 17°00'E. 8.31 N. 43°45'W. 1.63 N. 32°05'W. 7.89 N. 83°31'W. 11.57 N. 26°45'E. 2.65 N. 2°15'W. 4.77 N. 125°0'E. 5.41	15th M N. 30°28'W. 3.77 N. 13°09'W. 13.15 N. 138°E. 2.23 N. 42°30'W. .89 N. 141°8'W. 4.85 N. 91°00'W. 3.74 N. 10°05'E. 1.14 N. 7°15'W. 1.73 N. 39°07'W. 13.30 N. 69°15'E. 1.73 N. 57°50'E. 10.99 N. 46°28'E. 6.19 N. 40°08'E. 13.49 N. 34°15'E. 4.71	16th M N. 30°18'E. 6.49 N. 1°00'W. .72 N. 14°30'E. 3.71 N. 30°18'E. 1.54 N. 7°38'E. 1.71 N. 22°33'E. 2.92 N. 14°45'E. 3.69 N. 2°45'W. 1.40 N. 19°45'E. 1.72 N. 48°30'E. 1.05 N. 125°1'E. 1.75 N. 30°15'E. 12.18 N. 32°30'W. 6.78 N. 33°38'E. 3.98 N. 51°04'E. 3.32 S. 75°00'E. 1.09 N. 54°00'E. 1.73 N. 8°00'E. 2.66 N. 24°30'W. 1.60 N. 9°05'E. 4.52 N. 10°10'E. 1.51 N. 14°45'E. 3.52 N. 4°30'E. 6.47 N. 24°47'W. 1.95	17th M N. 21°00'W. 2.23 N. 29°05'W. 3.49 N. 20°1'W. 4.60 N. 25°45'E. 1.20 N. 51°5'E. 7.88 N. 21°50'E. 1.63 N. 54°38'E. 1.06 N. 6°00'E. 1.16 N. 24°25'E. 7.05 N. 43°54'E. 1.89 N. 52°00'E. 2.14 N. 62°45'E. 5.39 N. 84°12'E. 2.25 N. 77°12'E. 3.02 S. 52°45'E. 3.81 S. 66°00'E. 7.45 N. 50°30'E. 18.10 N. 33°30'E. 4.36	18th M N. 30°52'E. 7.43 N. 44°52'E. 10.69 N. 51°00'E. 4.72 N. 57°00'E. 2.95 S. 39°45'E. 2.78 S. 40°25'E. 6.69 S. 46°45'E. 4.74 S. 51°34'E. 3.55 S. 70°00'E. 16.59 N. 58°52'E. 3.56 N. 45°00'E. 6.44 N. 66°12'E. 7.87	19th M N. 67°00'E. 5.44 N. 49°45'E. 2.52 N. 26°45'E. 2.51 N. 37°37'E. 6.65 N. 47°12'E. 3.59 N. 36°53'E. 4.34 N. 69°25'E. 0.25 N. 55°50'E. 6.70 N. 52°00'E. 1.77 N. 15°42'E. 2.85 N. 12°10'W. 4.33 N. 6°30'E. 4.08 N. 49°10'E. 2.60 N. 14°35'W. 3.79 N. 64°45'E. 2.22 N. 24°45'W. 9.86 N. 39°00'W. 1.75 N. 25°45'W. 1.82 N. 21°07'E. 3.95 N. 0°45'W. .99	20th M N. 21°36'E. 3.20 N. 4°00'E. 3.82 N. 10°25'E. 4.16 N. 39°35'E. 14.11 N. 8°30'W. 6.24 N. 53°10'E. 3.66 N. 63°30'E. 4.81 N. 62°52'E. 4.34 N. 35°24'E. 7.36 N. 50°30'E. 6.55 N. 40°30'E. 6.49 N. 27°22'E. 6.74 N. 60°41'E. 5.52	21st M N. 55°47'E. 14.89 N. 4°40'E. 4.27 N. 1°56'E. 4.21 N. 44°07'E. 2.21 N. 49°05'E. 4.68 N. 25°30'E. 9.15 N. 14°30'E. .59 N. 13°15'E. 4.26 N. 10°00'E. 5.21 N. 31°15'E. 1.49 N. 48°31'E. 7.37 N. 37°50'E. 7.45 N. 46°11'E. 5.51 N. 40°15'E. 6.72
---------------------------------------------------------------------------------------------------------------------------------------------------	----------------------------------------------------------------------------------------------------------------------------------------------------------------------------------------------------------------------------------------------------------------------------------------------------------------------	---------------------------------------------------------------------------------------------------------------------------------------------------------------------------------------------	---------------------------------------------------------------------------------------------------------------------------------------------------------------------------------------------------------------------------------------	-------------------------------------------------------------------------------------------------------------------------------------------------------------------------------------------------------------------------------------------------------------------------------------------------------------------------------------	-----------------------------------------------------------------------------------------------------------------------------------------------------------------------------------------------------------------------------------------------------------------------------------------------------------------	--------------------------------------------------------------------------------------------------------------------------------------------------------------------------------------------------------------------------------------------------------------------------------------------	-------------------------------------------------------------------------------------------------------------------------------------------------------------------------------------------------------------------------------------------------------------------------------------------------------------------------------------------------------------------------	----------------------------------------------------------------------------------------------------------------------------------------------------------------------------------------------------------------------------------------------------------------------------------------------	------------------------------------------------------------------------------------------------------------------------------------------------------------------------------------------------------------------------------------------------------------------------------------------------	--------------------------------------------------------------------------------------------------------------------------------------------------------------------------------------------------------------------------------------------------------------------------------------------------------------------------------------------------------------------------------------------------------------------------------------------------------------------------------------------------	------------------------------------------------------------------------------------------------------------------------------------------------------------------------------------------------------------------------------------------------------------------------------------------------------------------------------------------------------------------------------	----------------------------------------------------------------------------------------------------------------------------------------------------------------------------------------------------------------------------------------------------------	---------------------------------------------------------------------------------------------------------------------------------------------------------------------------------------------------------------------------------------------------------------------------------------------------------------------------------------------------------------------------------------------------------------------	---------------------------------------------------------------------------------------------------------------------------------------------------------------------------------------------------------------------------------------------------------------------------	----------------------------------------------------------------------------------------------------------------------------------------------------------------------------------------------------------------------------------------------------------------------------------------------



Office of U.S. Supervisor of Surveys  
 Denver, Colorado, Jan. 17, 1934.  
 This plat of a portion of the East Boundary  
 Yellowstone National Park, Wyoming, is strictly  
 conformable to the field notes of the survey thereof  
 which have been examined and approved

*Wm. B. Johnson*  
 U. S. Supervisor of Surveys

DEPARTMENT OF THE INTERIOR  
 GENERAL LAND OFFICE  
 Washington, D. C., June 7, 1934.  
 The survey represented by this plat having  
 been correctly executed in accordance with the  
 requirements of law and the regulations of this office  
 is hereby accepted

*W. H. Bandy*  
 Acting Assistant Commissioner

Scale: 40 Chains to an Inch

### EAST BOUNDARY YELLOWSTONE NATIONAL PARK, WYOMING

REVISION IN ACCORDANCE WITH THE ACT OF MARCH 1, 1929

IN SIX SHEETS

Surveyed By W.R. Bandy, U.S.C.E.

Table of Courses and Distances from Mile Post 24187 to Mile Post 41



TABLE OF Courses and Distances From 21 M. to 24185 M.

25th M
S. 61° 46' W. 1.93
S. 70° 20' W. 2.56
N. 85° 30' W. 2.24
S. 82° 02' W. 9.40
S. 64° 05' W. 6.09
S. 34° 12' W. 2.04
S. 53° 13' W. 8.53
S. 88° 15' W. 3.19
S. 67° 30' W. 4.03
S. 79° 55' W. 5.77
S. 70° 40' W. 6.38
S. 58° 43' W. 4.66
S. 52° 10' W. 4.12
N. 39° 36' E. 2.24
N. 25° 00' E. 4.05
N. 72° 30' E. 8.52

26th M
S. 72° 45' W. 3.94
S. 81° 05' W. 3.30
S. 52° 35' W. 4.29
N. 77° 45' W. 1.71
N. 62° 45' W. 3.70
N. 53° 55' W. 4.49
N. 49° 45' W. 1.90
N. 60° 37' W. 2.75
N. 84° 20' W. 12.59
N. 58° 45' W. 1.35
N. 62° 30' W. 4.39
S. 76° 41' W. 9.16
S. 61° 25' W. 14.60
S. 39° 36' W. 3.09
S. 31° 00' W. 2.18
S. 59° 30' W. 4.96
S. 58° 30' W. 1.62

27th M
S. 57° 15' W. 5.76
S. 46° 08' W. 8.12
S. 72° 12' W. 8.35
S. 89° 30' W. 3.20
N. 64° 40' W. 7.29
S. 62° 20' W. 3.38
S. 65° 00' W. 5.65
S. 83° 30' W. 1.26
S. 86° 30' W. 3.00
N. 78° 25' W. 3.57
S. 83° 15' W. 3.89
S. 84° 34' W. 6.39
N. 68° 20' W. 2.73
N. 85° 45' W. 1.69
S. 65° 52' W. 2.83
N. 89° 06' W. 3.08
S. 75° 50' W. 2.41
S. 59° 00' W. 3.41
S. 49° 30' W. 6.47

28th M
S. 63° 56' W. 4.10
N. 65° 00' W. 3.73
S. 82° 11' W. 6.06
S. 87° 48' W. 2.77
N. 79° 52' W. 2.74
N. 67° 30' W. 4.40
N. 63° 00' W. 3.25
N. 83° 45' W. 1.63
S. 78° 00' W. 4.69
S. 75° 30' W. 2.25
S. 77° 11' W. 2.63
S. 82° 13' W. 1.75
S. 87° 00' W. 1.29
S. 65° 45' W. 2.42
S. 62° 30' W. 2.93
S. 77° 24' W. 4.63
S. 47° 30' W. 4.18
S. 28° 30' W. 1.64
S. 17° 40' W. 3.00
S. 26° 45' W. 6.48
S. 48° 16' W. 8.05
S. 61° 00' W. 3.50
S. 60° 06' W. 2.47
S. 61° 54' W. 1.61

29th M
N. 60° 00' W. 2.51
S. 67° 50' W. 3.62
N. 73° 23' W. 7.24
N. 66° 00' W. 4.53
N. 66° 04' W. 2.24
S. 72° 15' W. 7.82
S. 84° 17' W. 7.84
S. 87° 10' W. 4.19
S. 85° 09' W. 7.62
N. 65° 30' W. 1.64
N. 52° 30' W. 1.50
S. 70° 38' W. 1.43
S. 65° 30' W. 1.07
S. 60° 30' W. 5.55
S. 59° 38' W. 3.99

30th M
S. 64° 05' W. 8.42
S. 46° 12' W. 3.71
S. 60° 22' W. 4.96
S. 74° 37' W. 4.46
S. 62° 00' W. 4.23
S. 75° 17' W. 9.01
S. 39° 00' W. 3.51
S. 14° 00' W. 2.70
S. 5° 45' E. 1.10
S. 61° 20' W. 15.06
S. 52° 47' W. 17.33
S. 34° 20' W. 6.51

31st M
S. 32° 26' W. 5.51
S. 34° 15' W. 21.90
S. 23° 10' W. 12.39
S. 10° 41' W. 7.65
S. 28° 10' W. 2.06
S. 47° 00' W. 5.97
S. 52° 53' W. 3.85
S. 69° 00' W. 16.55
S. 81° 00' W. 3.92

32nd M
S. 77° 22' W. 12.11
N. 60° 50' W. 9.73
N. 64° 05' W. 4.75
N. 49° 17' W. 5.51
N. 23° 00' W. 7.90
N. 25° 00' W. 0.89
N. 39° 30' W. 2.06
N. 48° 45' W. 4.61
N. 46° 45' W. 1.72
N. 25° 20' W. 5.44
N. 27° 05' W. 4.79
N. 15° 53' W. 3.95
N. 6° 05' E. 7.30
N. 20° 15' E. 3.52
N. 8° 00' E. 5.52

33rd M
N. 6° 00' E. 8.66
N. 9° 30' W. 3.06
N. 0° 10' W. 3.49
N. 46° 09' W. 5.68
N. 53° 22' W. 16.40
N. 37° 40' W. 2.26
N. 73° 00' W. 9.46
N. 78° 50' W. 24.31
N. 35° 25' W. 6.38
N. 19° 41' W. 5.65
N. 36° 50' W. 3.66

34th M
N. 39° 45' W. 4.20
N. 18° 25' W. 19.85
N. 22° 07' E. 10.29
N. 27° 00' E. 3.94
N. 18° 45' W. 2.12
N. 5° 45' W. 4.39
N. 74° 18' W. 12.98
N. 29° 37' W. 2.61
N. 69° 27' W. 3.40
N. 41° 1' W. 7.36
N. 29° 00' E. 6.80
N. 12° 05' E. 2.46

35th M
N. 14° 30' E. 7.76
N. 20° 30' W. 13.38
N. 25° 3' E. 6.63
N. 10° 34' E. 8.21
N. 54° 55' E. 2.66
N. 24° 00' E. 1.56
N. 10° 30' E. 3.34
N. 87° 36' E. 8.26
N. 15° 00' E. 18.33
N. 4° 50' E. 5.54
N. 1° 30' E. 4.53

36th M
N. 7° 36' E. 4.66
N. 85° 42' W. 14.06
N. 62° 18' W. 7.07
S. 82° 40' W. 2.36
N. 38° 45' W. 5.58
N. 84° 15' E. 4.04
N. 5° 10' E. 2.23
N. 18° 45' E. 1.67
N. 34° 07' W. 5.52
S. 70° 41' W. 6.13
N. 71° 45' W. 10.23
N. 62° 52' W. 7.85
N. 22° 15' W. 6.74
N. 1° 10' E. 1.66

37th M
N. 14° 45' E. 3.75
N. 8° 24' W. 11.78
N. 83° 48' W. 6.89
N. 30° 45' W. 2.29
S. 79° 00' W. 6.12
N. 31° 45' W. 6.06
N. 47° 00' W. 3.12
N. 52° 45' W. 4.05
N. 31° 00' W. 2.63
N. 62° 15' W. 9.04
N. 52° 30' W. 6.85
N. 60° 45' W. 4.81
N. 34° 20' W. 4.34
N. 41° 15' W. 8.30

38th M
N. 19° 00' W. 3.87
N. 89° 23' W. 4.85
N. 01° 20' W. 3.08
N. 1° 33' W. 4.04
N. 20° 08' E. 2.01
N. 4° 07' W. 4.66
N. 13° 05' W. 2.00
N. 25° 30' W. 2.88
N. 10° 45' E. 3.03
N. 11° 35' E. 10.04
N. 22° 45' W. 0.54
N. 12° 27' W. 15.83
N. 61° 45' W. 7.12
N. 3° 28' W. 6.81
N. 32° 41' W. 9.51
N. 5° 42' E. 0.63

39th M
N. 14° 00' E. 18.40
N. 38° 36' E. 2.16
S. 30° 06' E. 3.31
S. 29° 23' E. 2.96
S. 37° 39' E. 13.17
S. 57° 38' E. 0.76
N. 39° 30' E. 1.84
N. 42° 38' E. 1.54
N. 81° 00' E. 10.40
N. 71° 58' E. 7.54
N. 60° 40' E. 9.28
N. 77° 30' E. 1.39
N. 46° 00' E. 5.88
N. 29° 30' E. 1.90

40th M
N. 29° 30' E. 7.02
N. 45° 30' E. 2.28
N. 39° 15' E. 5.93
N. 59° 00' E. 4.41
N. 32° 45' E. 4.77
N. 38° 55' E. 4.38
N. 26° 43' E. 9.39
N. 14° 00' W. 2.83
S. 74° 19' E. 4.84
S. 69° 00' E. 1.80
S. 47° 27' E. 4.06
S. 60° 23' E. 4.74
N. 76° 15' E. 8.83
S. 77° 04' E. 1.96
N. 81° 40' E. 4.72
S. 73° 00' E. 9.71
N. 64° 35' E. 4.39
S. 77° 12' E. 0.95

41st M
S. 83° 34' E. 11.13
N. 55° 00' E. 3.75
N. 70° 00' E. 2.66
N. 34° 00' E. 1.23
S. 81° 38' E. 18.48
N. 40° 00' E. 2.75
N. 51° 40' E. 3.59
N. 27° 30' E. 12.38
N. 10° 15' W. 12.34
N. 1° 04' E. 4.06
N. 31° 00' E. 1.65

Office of U.S. Supervisor of Surveys  
 Denver, Colorado, Jan. 17, 1934.  
 The above plat of a portion of the East Boundary  
 Yellowstone National Park, Wyoming, is strictly  
 conformable to the field notes of the survey thereof  
 which have been examined and approved

*Wm. H. Conson*  
 U.S. Supervisor of Surveys

Scale: 40 Chains to an Inch

DEPARTMENT OF THE INTERIOR  
 GENERAL LAND OFFICE  
 Washington, D.C., June 7, 1934.

The survey represented by this plat having been correctly executed in accordance  
 with the requirements of law and the regulations of this office is hereby accepted

*J. H. Curtis*  
 Acting Assistant Commissioner

*J. H. Curtis*

5960

# EAST BOUNDARY YELLOWSTONE NATIONAL PARK, WYOMING

REVISION IN ACCORDANCE WITH THE ACT OF MARCH 1, 1929

IN SIX SHEETS  
SCALE: 40 CHAINS TO AN INCH

Surveyed By W. R. Bandy, U. S. C. E.



Table of Courses and Distances from Mile Post 41 to Mile Post 54

42nd M	46th M	50th M	53rd M
N.30°42'E. 1.68	N.47°36'E. 6.03	N.42°15'E. 6.17	N.57°00'E. 19.90
N.42°32'E. 2.17	N.42°39'E. 4.13	S. 8°20'E. 3.35	N.70°54'E. 4.91
N.37°11'E. 3.70	N.10°42'W. 7.29	N.50°15'E. 3.01	S. 25°30'E. 0.96
N.54°10'E. 14.52	N.20°19'W. 2.15	S. 20°30'E. 2.56	S. 42°30'E. 7.13
N.48°15'E. 12.80	N.27°30'W. 5.78	N.65°11'E. 2.95	S. 44°00'E. 7.60
N.24°54'E. 4.97	N.17°00'W. 7.85	N.42°00'E. 2.39	S. 64°00'E. 9.42
N.26°52'E. 23.30	N.27°30'E. 6.75	N.20°00'E. 3.10	N. 64°50'E. 14.70
N.66°57'W. 16.70	N.23°15'E. 6.80	N.14°30'E. 6.79	N.70°06'E. 4.97
	N.36°51'E. 19.30	N.23°00'W. 7.94	N.22°15'E. 2.63
	N. 0°39'E. 7.30	N. 25°11'W. 9.47	
	N. 1°37'E. 4.70	N. 0°00'W. 14.30	
		S. 64°30'E. 6.30	
		S. 76°36'E. 4.70	
		S. 25°00'E. 4.47	

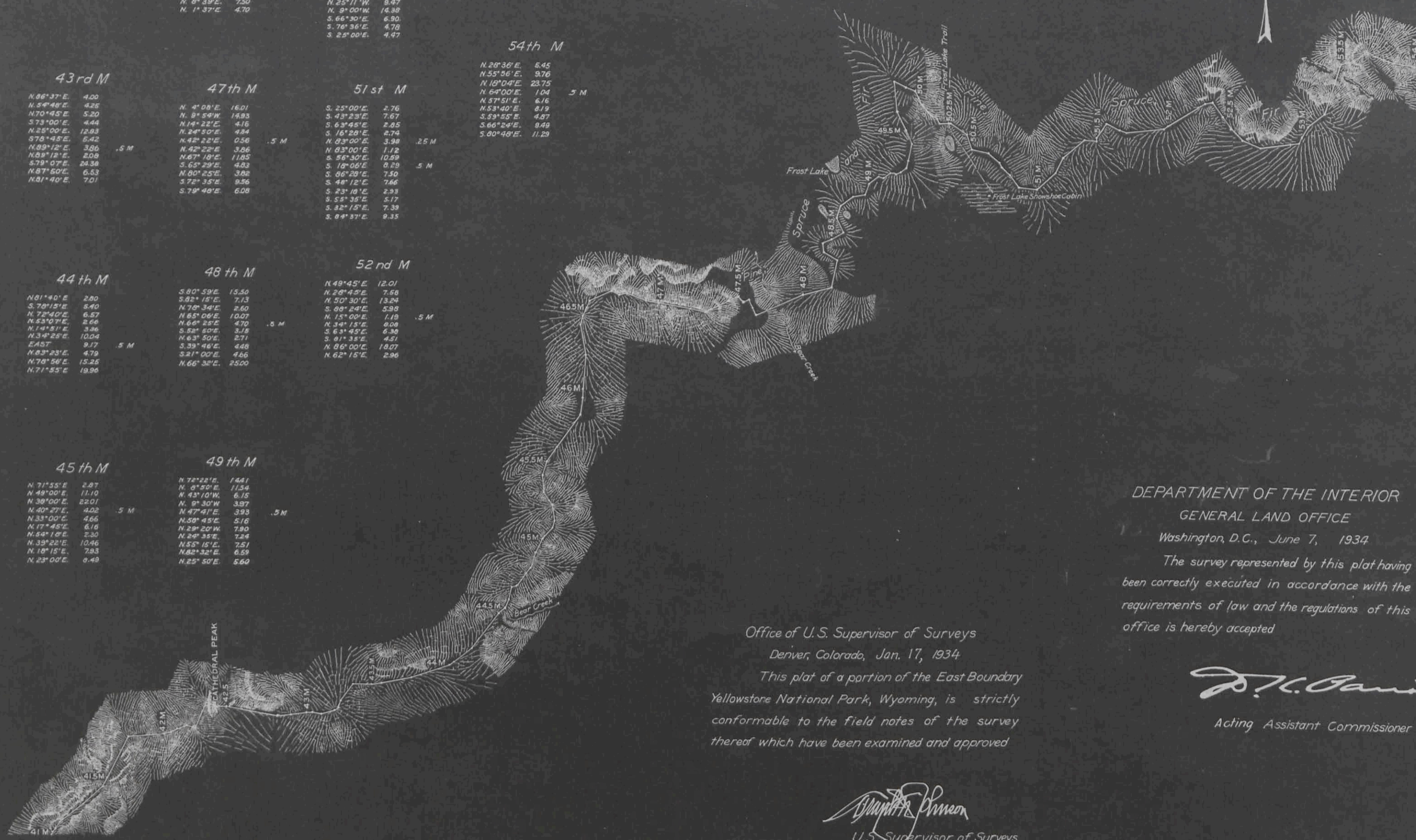
43rd M	47th M	51st M	54th M
N.66°37'E. 4.00	N. 0°08'E. 16.01	S. 25°00'E. 2.76	N.20°36'E. 6.45
N.54°46'E. 4.25	N. 0°19'W. 16.93	S. 43°23'E. 7.67	N.55°56'E. 9.76
N.70°45'E. 3.20	N.14°22'E. 4.16	S. 63°46'E. 2.65	N.10°04'E. 23.75
S.73°00'E. 4.44	N.24°50'E. 4.84	N. 03°00'E. 1.12	N. 57°51'E. 6.16
N.25°00'E. 12.83	N.47°10'E. 11.85	S. 76°30'E. 10.29	N.53°40'E. 8.19
S.70°45'E. 6.42	S. 62°39'E. 4.83	S. 10°06'E. 0.25	S.23°55'E. 4.87
N.89°12'E. 3.66	N.00°25'E. 3.82	S. 06°09'E. 7.50	S.66°24'E. 0.49
N.89°15'E. 2.08	S.72°35'E. 9.96	S. 44°12'E. 7.66	S.00°40'E. 11.29
S.79°02'E. 24.38	S.70°40'E. 6.08	S. 23°10'E. 2.33	
N.87°50'E. 6.53		S. 52°55'E. 5.71	
N.81°40'E. 7.01		S. 8°57'E. 9.35	

44th M	48th M	52nd M
N.01°40'E. 2.80	S. 00°59'E. 15.30	N.49°45'E. 12.01
S.70°54'E. 8.40	S. 82°18'E. 7.13	N. 20°45'E. 7.58
N.72°40'E. 6.87	N.70°34'E. 2.60	N. 50°30'E. 13.25
N.53°10'E. 2.56	N. 65°06'E. 10.07	S. 90°24'E. 5.99
N.14°51'E. 3.86	N. 66°18'E. 4.70	N. 15°00'E. 1.13
N.34°25'E. 10.06	S. 58°50'E. 3.18	N.34°13'E. 0.08
E.45°T. 9.17	N. 63°50'E. 2.71	S. 61°45'E. 6.30
N.63°23'E. 4.79	N. 63°50'E. 2.71	S. 01°38'E. 4.81
N.70°54'E. 13.26	S. 21°00'E. 4.66	N. 09°00'E. 14.07
N.71°55'E. 10.96	N. 66°30'E. 25.00	N. 62°15'E. 2.96

45th M	49th M
N.71°55'E. 2.87	N.70°22'E. 14.41
N.49°00'E. 11.10	N. 0°50'E. 17.34
N.30°00'E. 22.01	N. 0°10'W. 16.12
N.40°27'E. 4.02	N. 0°30'W. 3.97
N.33°00'E. 6.66	N. 47°41'E. 3.93
N.17°46'E. 6.16	N.50°43'E. 5.16
N.64°10'E. 2.30	N.22°02'W. 7.90
N.39°28'E. 10.46	N. 20°35'E. 7.84
N.10°15'E. 7.83	N.55°10'E. 7.51
N.23°00'E. 0.49	N.65°35'E. 6.99
	N.25°50'E. 5.60



DEPARTMENT OF THE INTERIOR  
GENERAL LAND OFFICE  
Washington, D.C., June 7, 1934

The survey represented by this plat having been correctly executed in accordance with the requirements of law and the regulations of this office is hereby accepted

*J. C. Davis*  
Acting Assistant Commissioner

Office of U.S. Supervisor of Surveys  
Denver, Colorado, Jan. 17, 1934  
This plat of a portion of the East Boundary Yellowstone National Park, Wyoming, is strictly conformable to the field notes of the survey thereof which have been examined and approved

*Wm. R. Bandy*  
U.S. Supervisor of Surveys

Handwritten initials and marks at the bottom right corner.

# EAST BOUNDARY YELLOWSTONE NATIONAL PARK WYOMING

REVISION IN ACCORDANCE WITH THE ACT OF MARCH 1, 1929

SCALE, 40 CHAINS TO AN INCH

IN SIX SHEETS

Surveyed By W.R. Bandy, U. S. C. E.

Table of Courses and Distances from Mile Post 54 to Mile Post 72

55th M	61st M	64th M	67th M
S. 85° 40' E. 21.27	N. 26° 52' E. 4.00	N. 45° 09' E. 6.20	N. 56° 45' W. 9.15
N. 81° 42' E. 9.40	N. 9° 34' W. 9.74	N. 3° 10' E. 6.63	S. 32° 05' W. 5.91
N. 52° 38' E. 5.69	N. 22° 40' E. 20.29	N. 26° 15' E. 11.69	N. 68° 15' W. 6.08
N. 45° 53' E. 3.65	N. 36° 30' E. 5.97	N. 63° 00' E. 13.28	N. 68° 00' W. 4.14
N. 50° 27' E. 6.59	N. 24° 00' E. 5.59	N. 69° 15' E. 7.40	N. 66° 41' W. 14.72
N. 58° 57' E. 6.76	N. 20° 06' E. 5.04	N. 53° 54' E. 11.21	S. 39° 05' W. 5.48
S. 78° 30' E. 3.32	N. 30° 08' E. 3.29	N. 20° 43' E. 9.16	N. 78° 58' W. 17.12
N. 67° 15' E. 13.77	N. 42° 38' E. 4.31	N. 57° 00' E. 5.28	S. 50° 45' W. 15.63
	N. 63° 11' E. 6.25	N. 53° 45' E. 6.95	S. 87° 30' W. 1.77
	N. 71° 10' E. 2.91		
	N. 33° 00' E. 3.95		
56th M	62nd M	65th M	68th M
N. 79° 15' E. .96	N. 12° 45' E. 4.35	N. 37° 51' E. 1.10	S. 66° 00' W. 7.73
N. 55° 00' E. 16.56	N. 42° 37' E. 8.90	N. 25° 30' W. 3.75	N. 60° 54' W. 12.49
S. 43° 10' E. 2.86	N. 54° 51' E. 5.97	N. 3° 10' W. 3.19	N. 52° 45' W. 7.09
S. 54° 25' E. 0.61	N. 10° 30' E. 7.61	N. 13° 15' E. 9.11	N. 16° 45' W. 12.69
S. 64° 56' E. 5.77	N. 36° 14' E. 13.17	N. 44° 38' E. 5.39	N. 66° 10' W. 3.03
S. 68° 53' E. 3.06	N. 44° 02' E. 1.54	N. 35° 22' E. 9.44	N. 53° 03' W. 3.05
N. 62° 30' E. 2.10	N. 50° 17' E. 6.75	N. 39° 56' E. 3.27	N. 54° 00' W. 3.38
N. 62° 30' E. 3.60	N. 60° 45' E. 4.91	N. 35° 00' E. 3.29	N. 14° 10' W. 6.71
S. 62° 13' E. 10.76	S. 50° 24' E. 3.15	N. 46° 33' W. 10.44	N. 11° 18' E. 9.83
N. 53° 39' E. 11.84	S. 67° 53' E. 5.82	N. 63° 45' W. 12.02	N. 43° 12' W. 5.39
N. 49° 10' E. 5.00	N. 47° 37' E. 1.96	N. 46° 30' W. 4.28	N. 2° 30' W. 6.42
	N. 79° 56' E. 6.77		N. 23° 34' W. 6.10
57th M	63rd M	66th M	69th M
N. 25° 25' E. 17.34	N. 59° 43' E. 3.45	N. 39° 11' W. 9.86	N. 46° 43' W. 10.27
N. 66° 10' E. 22.66	N. 73° 01' E. 9.79	N. 13° 57' W. 7.65	N. 0° 40' E. 7.70
N. 83° 25' E. 6.83	N. 36° 45' E. 5.32	N. 0° 40' E. 7.70	S. 75° 25' W. 2.69
N. 75° 30' E. 6.70	N. 49° 00' E. 7.36	N. 6° 36' E. 4.35	N. 69° 50' W. 4.79
S. 77° 00' E. 8.88	N. 39° 48' E. 7.11	N. 48° 00' W. 5.74	S. 71° 54' W. 12.53
N. 74° 33' E. 1.85	N. 59° 34' E. 6.97	N. 76° 45' W. 4.70	N. 82° 55' W. 3.40
N. 15° 11' W. 7.96	N. 75° 23' E. 3.94	N. 4° 27' W. 11.46	N. 64° 07' W. 4.78
N. 33° 25' W. 6.55	N. 6° 55' E. 2.95	N. 14° 10' W. 6.24	N. 30° 50' W. 6.79
N. 18° 39' W. 2.99	N. 15° 51' E. 5.18	N. 40° 05' E. 1.51	N. 28° 16' W. 7.35
N. 7° 54' E. 7.68	N. 19° 20' W. 3.91	N. 10° 54' W. 12.30	N. 89° 10' W. 1.42
N. 6° 15' W. 5.23	N. 0° 50' W. 4.17	N. 6° 22' E. 2.90	N. 78° 00' W. 13.49
N. 9° 30' E. 7.74	N. 11° 30' E. 6.61	N. 66° 45' W. 3.99	N. 5° 16' W. 16.01
N. 19° 37' E. 3.58	N. 30° 15' E. 11.24	N. 48° 30' W. 1.60	N. 77° 23' W. 2.23
N. 4° 15' W. 3.06			
N. 41° 35' E. 13.94			
N. 25° 43' E. 12.16			
N. 21° 45' E. 3.13			
N. 81° 00' E. 5.03			
58th M	64th M	67th M	71st M
N. 74° 33' E. 1.85	N. 39° 11' W. 9.86	N. 46° 43' W. 10.27	N. 12° 24' W. 13.98
N. 59° 34' E. 6.97	N. 13° 57' W. 7.65	N. 0° 40' E. 7.70	N. 17° 05' W. 3.11
N. 75° 23' E. 3.94	N. 0° 40' E. 7.70	S. 75° 25' W. 2.69	N. 28° 00' W. 9.34
N. 6° 55' E. 2.95	N. 6° 36' E. 4.35	N. 48° 00' W. 5.74	N. 78° 25' W. 4.88
N. 15° 51' E. 5.18	N. 48° 00' W. 5.74	N. 76° 45' W. 4.70	N. 68° 15' W. 1.94
N. 19° 20' W. 3.91	N. 4° 27' W. 11.46	N. 4° 27' W. 11.46	N. 58° 30' W. 6.76
N. 0° 50' W. 4.17	N. 14° 10' W. 6.24	N. 14° 10' W. 6.24	N. 37° 40' W. 21.43
N. 11° 30' E. 6.61	N. 40° 05' E. 1.51	N. 40° 05' E. 1.51	N. 1° 50' W. 3.41
N. 30° 15' E. 11.24	N. 10° 54' W. 12.30	N. 10° 54' W. 12.30	N. 38° 22' W. 7.75
	N. 6° 22' E. 2.90	N. 6° 22' E. 2.90	N. 20° 00' W. 1.54
	N. 66° 45' W. 3.99	N. 66° 45' W. 3.99	N. 48° 17' W. 5.87
	N. 48° 30' W. 1.60	N. 48° 30' W. 1.60	
59th M	65th M	68th M	72nd M
N. 79° 08' E. 9.89	N. 37° 51' E. 1.10	S. 66° 00' W. 7.73	N. 40° 29' W. 4.25
S. 77° 10' E. 4.37	N. 25° 30' W. 3.75	N. 60° 54' W. 12.49	N. 44° 41' W. 9.73
N. 63° 45' E. 15.09	N. 3° 10' W. 3.19	N. 52° 45' W. 7.09	N. 34° 22' W. 4.51
N. 63° 47' E. 4.08	N. 13° 15' E. 9.11	N. 16° 45' W. 12.69	S. 97° 50' W. 2.85
N. 36° 20' E. 6.43	N. 39° 56' E. 3.27	N. 53° 03' W. 3.05	N. 64° 00' W. 5.28
N. 73° 20' E. 15.34	N. 35° 00' E. 3.29	N. 54° 00' W. 3.38	N. 78° 25' W. 4.88
N. 67° 50' E. 7.39	N. 46° 33' W. 10.44	N. 14° 10' W. 6.71	N. 68° 15' W. 1.94
N. 25° 43' E. 6.83	N. 43° 12' W. 5.39	N. 11° 18' E. 9.83	N. 58° 30' W. 6.76
N. 23° 45' E. 7.56	N. 2° 30' W. 6.42	N. 43° 12' W. 5.39	N. 37° 40' W. 21.43
N. 81° 08' E. 3.98	N. 23° 34' W. 6.10	N. 2° 30' W. 6.42	N. 1° 50' W. 3.41
		N. 37° 23' E. 5.89	N. 38° 22' W. 7.75
			N. 20° 00' W. 1.54
			N. 48° 17' W. 5.87

Office of U.S. Supervisor of Surveys  
Denver, Colorado, Jan. 17, 1934.

This plot of a portion of the East Boundary Yellowstone National Park, Wyoming, is strictly conformable to the field notes of the survey thereof which have been examined and approved

*Charles Johnson*  
U.S. Supervisor of Surveys

DEPARTMENT OF THE INTERIOR  
GENERAL LAND OFFICE  
Washington, D. C., June 7, 1934

The survey represented by this plat having been correctly executed in accordance with the requirements of law and the regulations of this office is hereby accepted

*J. H. Canfield*  
Acting Assistant Commissioner

# EAST BOUNDARY YELLOWSTONE NATIONAL PARK, WYOMING

REVISION IN ACCORDANCE WITH THE ACT OF MARCH 1, 1929

IN SIX SHEETS

Scale: 40 Chains to an Inch

Surveyed By W. R. Bandy, U. S. C. E.



Table of Courses and Distances from Mile Post 72 to Mile Post 84

73rd M	76th M	79th M	82nd M
N. 27° 22' W. 7.49	N. 43° 11' W. 6.04	N. 54° 00' E. 2.84	N. 7° 15' W. 3.44
N. 22° 16' W. 4.32	N. 65° 48' W. 3.14	S. 86° 10' E. 5.07	N. 20° 30' E. 5.82
N. 44° 00' W. 3.93	N. 52° 27' W. 6.92	N. 39° 12' E. 19.97	N. 41° 50' E. 1.40
N. 7° 45' W. 16.57	N. 63° 33' W. 18.79	N. 62° 13' E. 7.16	N. 60° 35' E. 4.47
N. 26° 00' W. 7.69	N. 21° 36' E. 5.11	N. 40° 15' E. 4.96	N. 12° 45' E. 8.26
N. 38° 50' W. 2.60	N. 48° 50' E. 7.17	N. 60° 00' E. 9.98	N. 40° 00' E. 10.93
N. 85° 20' W. 6.77	N. 30° 32' E. 3.54	N. 57° 00' E. 6.10	N. 5° 44' W. 56.8
N. 46° 26' W. 8.90	N. 52° 45' E. 5.71	N. 61° 50' E. 2.80	N. 21° 08' W. 4.51
N. 4° 54' W. 7.10	N. 17° 45' W. 8.79	N. 2° 00' E. 4.12	N. 9° 00' W. 6.62
N. 17° 25' W. 9.39	N. 37° 25' W. 8.17	N. 40° 15' W. 6.65	N. 6° 40' E. 6.39
N. 17° 00' W. 5.25	N. 2° 00' W. 6.62	N. 29° 30' W. 6.35	N. 30° 50' W. 6.30
			N. 21° 27' W. 10.34
			N. 45° 00' W. 3.38
			N. 15° 00' W. 2.46

74th M	77th M	80th M	83rd M
N. 32° 23' W. 8.15	N. 16° 52' W. 18.70	N. 27° 00' W. 11.72	N. 6° 04' E. 15.47
N. 54° 24' W. 5.97	N. 15° 40' E. 8.66	N. 17° 50' E. 8.10	N. 25° 15' E. 2.95
N. 33° 09' W. 11.69	N. 07° 21' W. 9.97	N. 52° 25' W. 5.97	N. 40° 00' E. 3.39
N. 53° 57' W. 4.34	N. 31° 45' W. 1.87	N. 42° 15' W. 14.51	N. 60° 30' E. 1.95
N. 43° 15' W. 6.67	N. 37° 06' W. 4.54	N. 22° 36' W. 6.20	N. 40° 36' E. 10.07
N. 64° 14' W. 3.19	N. 30° 00' W. 6.82	N. 4° 13' E. 9.85	N. 28° 25' E. 6.17
N. 77° 45' W. 4.11	N. 48° 43' E. 15.39	N. 43° 05' W. 19.86	N. 32° 25' E. 4.10
N. 9° 30' W. 6.74	N. 27° 22' E. 13.25		N. 42° 35' E. 3.12
N. 33° 43' W. 8.47			N. 12° 55' E. 9.97
N. 30° 35' W. 4.26			N. 24° 55' E. 5.87
N. 65° 30' W. 16.42			S. 77° 00' E. 1.40
			N. 23° 36' E. 6.32
			N. 12° 30' E. 9.22

75th M	78th M	81st M	84th M
N. 72° 30' W. 3.63	N. 39° 42' E. 5.86	N. 0° 45' W. 10.80	N. 3° 36' W. 6.67
N. 87° 20' W. 7.47	N. 26° 52' E. 7.15	N. 10° 45' E. 4.98	N. 19° 17' E. 7.83
N. 37° 41' W. 5.32	N. 45° 00' E. 6.98	N. 24° 35' W. 6.60	N. 45° 43' W. 2.82
S. 70° 15' W. 2.45	N. 65° 00' E. 9.66	N. 14° 30' E. 17.62	N. 2° 24' E. 14.37
N. 09° 40' W. 13.62	N. 51° 34' E. 12.25	N. 10° 15' E. 3.15	N. 34° 38' E. 6.82
N. 74° 30' W. 4.96	N. 51° 34' E. 17.60	N. 42° 13' E. 5.90	N. 10° 00' W. 1.49
N. 68° 30' W. 2.35	N. 26° 24' E. 13.97	N. 12° 10' E. 5.10	N. 5° 13' W. 6.79
S. 81° 00' W. 5.16	N. 38° 05' E. 8.23	N. 35° 00' E. 2.71	N. 29° 01' W. 12.24
N. 60° 30' W. 5.57		N. 22° 53' E. 7.33	N. 8° 15' W. 5.35
N. 18° 15' W. 11.30		N. 21° 44' W. 13.02	N. 23° 52' W. 10.43
N. 62° 37' W. 9.93		N. 11° 50' W. 2.79	N. 27° 43' E. 5.19
N. 70° 55' W. 4.52			
N. 41° 45' W. 3.52			



Office of U. S. Supervisor of Surveys  
 Denver, Colorado, Jan. 17, 1934.

This plat of a portion of the East Boundary of Yellowstone National Park, Wyoming, is strictly conformable to the field notes of the survey thereof which have been examined and approved

*Walter J. Pinner*  
 U. S. Supervisor of Surveys

DEPARTMENT OF THE INTERIOR  
 GENERAL LAND OFFICE  
 Washington, D. C., June 7, 1934.

The survey represented by this plat, having been correctly executed in accordance with the requirements of law and the regulations of this office, is hereby accepted

*J. H. Bennett*

Acting Assistant Commissioner

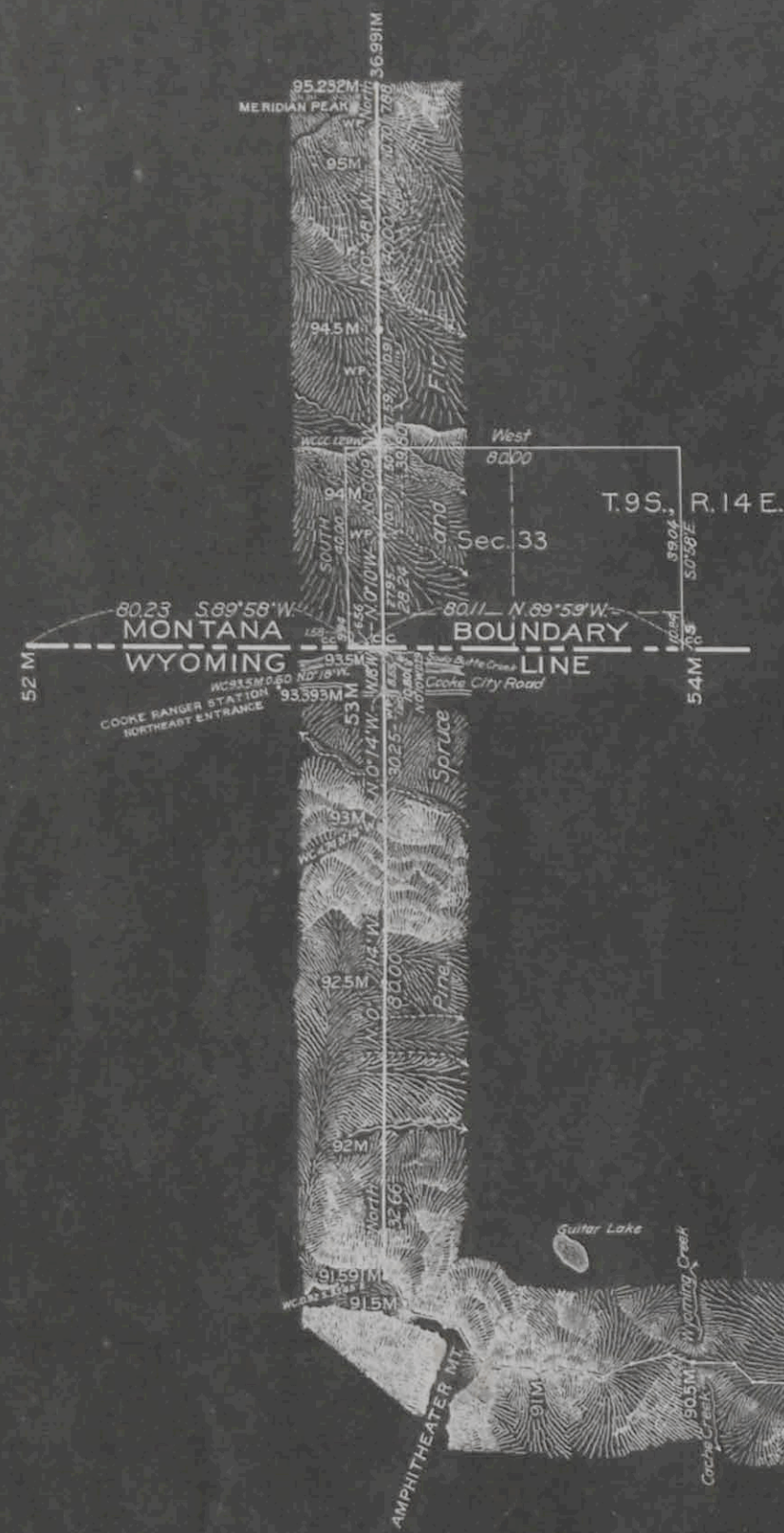
# EAST BOUNDARY YELLOWSTONE NATIONAL PARK, WYOMING

REVISION IN ACCORDANCE WITH THE ACT OF MARCH 1, 1929

IN SIX SHEETS

Scale: 40 Chains to an Inch

Table of Courses and Distances from Mile Post 84 to Mile Post 91.591



Mile Post	Course	Distance
85th M	N 2°15' W	1.95
	N 9°15' E	7.91
	N 56°00' E	0.65
	N 10°17' E	0.53
	N 11°30' W	0.76
86th M	N 2°00' E	8.14
	N 7°37' W	24.12
	N 25°00' E	7.74
	N 6°15' W	4.37
	N 31°15' W	1.77
87th M	N 2°15' W	1.95
	N 24°30' W	16.82
	N 75°15' W	16.73
	N 55°15' W	7.05
	N 46°15' W	1.26
88th M	N 28°23' W	27.74
	N 46°56' W	5.92
	N 32°40' W	6.44
	N 6°09' W	6.92
	N 24°06' W	13.17
89th M	N 62°00' W	0.66
	N 52°15' W	7.34
	N 30°21' W	7.98
	N 42°53' W	15.09
	N 22°55' W	6.93
90th M	N 15°00' W	3.85
	N 51°57' W	6.50
	N 26°53' W	12.55
	N 82°00' W	2.46
	N 61°35' W	3.20
91st M	N 69°15' W	7.04
	S 61°05' W	0.73
	S 89°45' W	7.26
	N 45°23' W	6.04
	N 65°45' W	10.93
92nd M	N 54°37' W	12.40
	N 45°05' W	4.76
	N 29°30' W	7.54
	S 64°45' W	3.28
	N 32°30' W	2.13

BY WHOM SURVEYED	GROUP		MILEAGE		WHEN SURVEYED	
	No.	DATE	MLS.	CHS.	BEGUN	COMPLETED
William R. Bandy	G.L.O.	April 14, 1931	89	58.58	Aug 9, 1931	Sept. 16, 1932

DEPARTMENT OF THE INTERIOR  
GENERAL LAND OFFICE  
Washington, D. C., June 7, 1934

The survey represented by this plat having been correctly executed in accordance with the requirements of law and the regulations of this office is hereby accepted

*J. H. Bandy*  
Acting Assistant Commissioner

Office of U.S. Supervisor of Surveys  
Denver, Colorado, Jan. 17, 1934.

The above plat of a portion of the East Boundary of the Yellowstone National Park, Wyoming, is strictly conformable to the field notes of the survey thereof which have been examined and approved

*Charles Johnson*  
Supervisor of Surveys



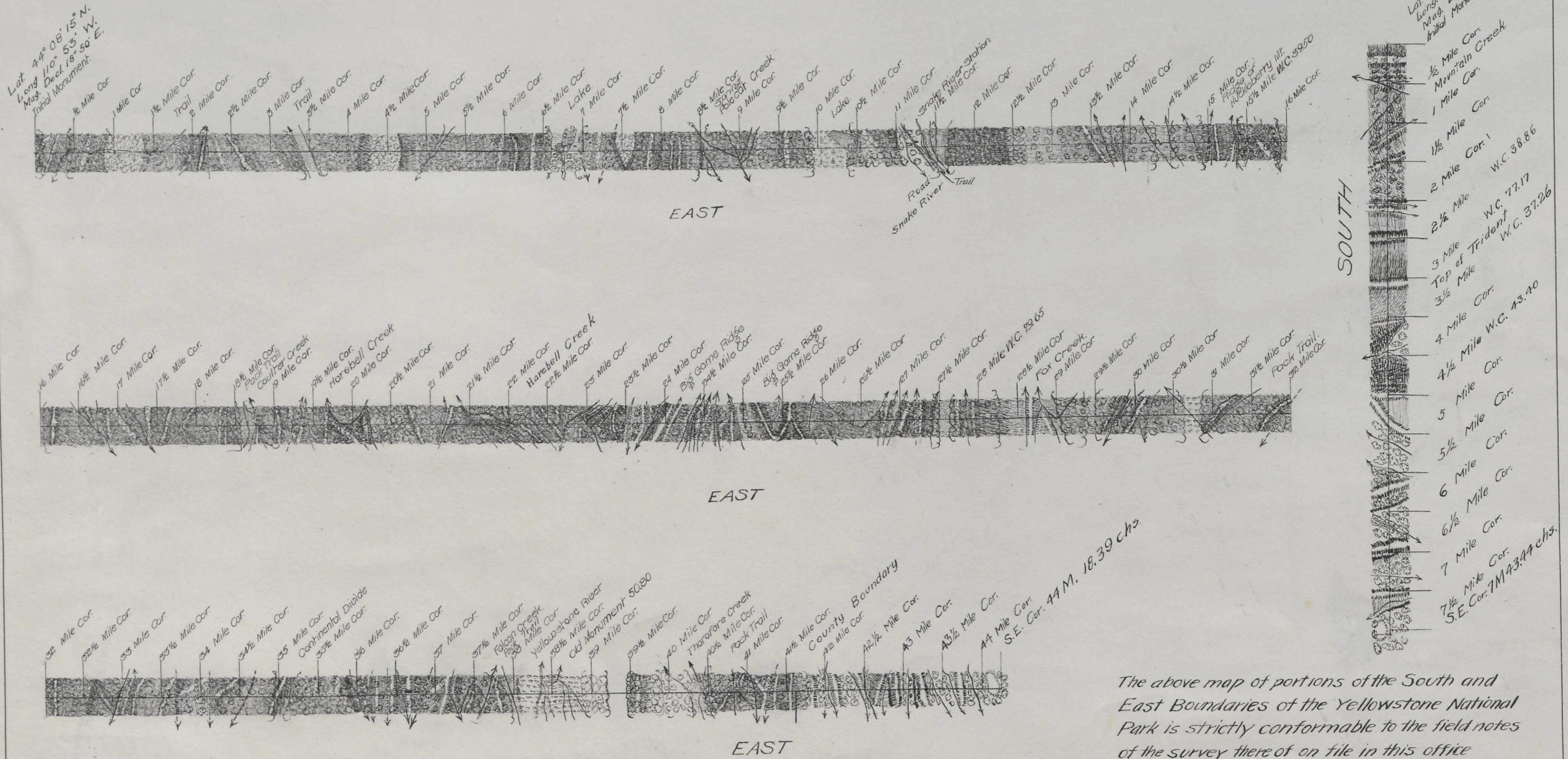
Surveyed Sept 3 to Oct. 3, 1908, and Aug. 24 to Aug. 30, 1909, under contract No. 334 dated Aug. 7, 1908.

# PORTIONS OF THE SOUTH AND EAST BOUNDARIES OF THE YELLOWSTONE NATIONAL PARK

SURVEYED BY Sidney E. & Albert B. Bartlett

SCALE: 1 inch = 1 Mile.

RECEIVED S. G. O. FEB 23 1910 CHEYENNE, WYO.



The above map of portions of the South and East Boundaries of the Yellowstone National Park is strictly conformable to the field notes of the survey thereof on file in this office which have been examined and approved.

SURVEYOR GENERAL'S OFFICE  
 CHEYENNE, WYO.,  
 JUNE 9, 1910.

*Stephen D. Hanson*  
 Surv. Genl.

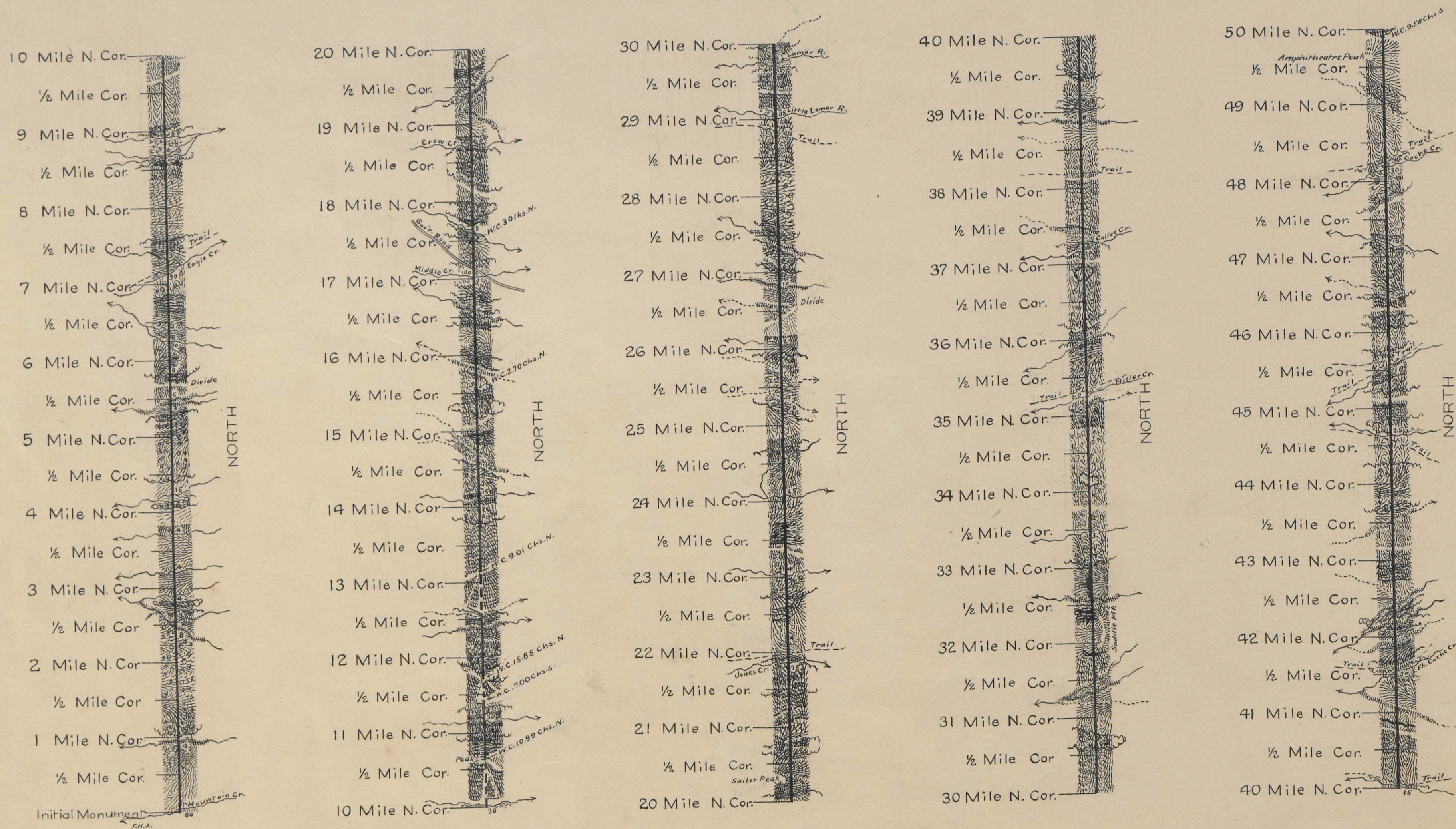
Survey accepted by the Hon. Commissioner in his letter "E" Dec. 24, 1910.

# EAST BOUNDARY of the Yellowstone National Park Surveyed by Edward F. Stahle

*Read with letter from E. F. Stahle  
dated Jan. 9, 1904. 11039.*

Scale: 1 inch ≈ 1 mile

RECEIVED S. G. O.  
APR 19 1904  
CHEYENNE, WYO.



4

JCH.

The above plat of the East Boundary of the Yellowstone National Park, from the Initial Monument established by Lieut. Bromwell, to the 50th Mile Monument north, is strictly conformable to the field notes of the survey thereof on file in this office, which have been examined and approved.

Department of the Interior,  
General Land Office,  
Washington, D.C. April 16, 1904.

*W. A. Richards*

Commissioner.

# PLAT

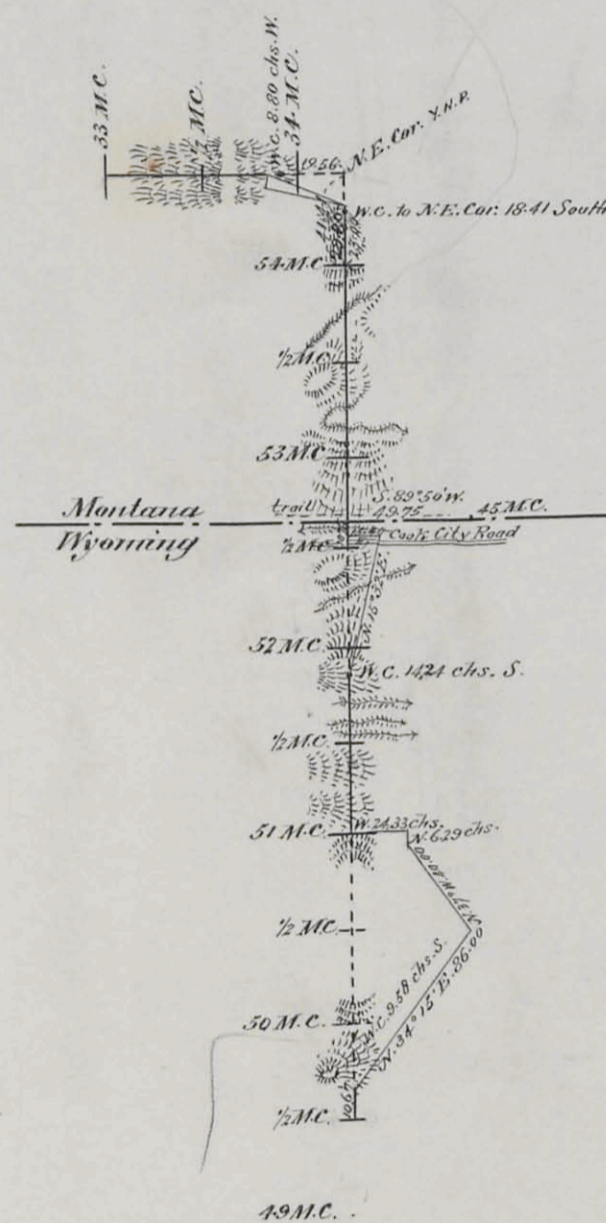
of fractional East and North Boundaries  
of the

## YELLOWSTONE NATIONAL PARK

Surveyed by J. Scott Harrison, Examiner of Surveys, Sept. 24- Oct. 7, 1903,  
under his instructions from Com. Civil Land Office, dated Sept. 11, 1903.

Scale: 1 inch = 1 Mile.

RECEIVED S. G. O.  
JUN 10 1904  
CHEYENNE, WYO.



Department of the Interior,  
General Land Office.  
Washington, D.C., June 6, 1904.

The above plat of the fractional East Boundary of the Yellowstone National Park,  
from the Fiftieth Mile Corner to the North East Corner; and the completion of the North  
Boundary from the 33 mile Monument to the North East Corner, is strictly conformable  
to the field notes of the survey thereof on file in this office, which have been examined  
and approved.

J.S.H.

J. H. Finckle  
Acting Commissioner.

**DIAGRAM**  
**OF THE**  
**N.E. & S. BOUNDARIES**  
**OF THE**  
**PUBLIC FOREST RESERVATION**  
**AND THE**  
**FRAC.E. BOUNDARY**  
**OF THE**  
**YELLOWSTONE NATIONAL PARK**  
**IN**  
**WYOMING**

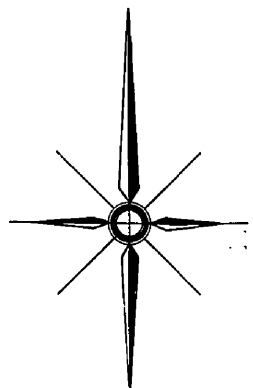
*As surveyed by Philip M. Gallaher U.S. Deputy Surveyor Aug. 3<sup>rd</sup> to Oct. 22<sup>nd</sup> 1893, under his contract No. 263 dated Oct. 17, 1894.*

Scale 1/2 in = 1 mile  
 O indicates corners established  
 + indicates proper points for corners but not established

*I certify that the above diagram of the N.E. & S. Boundaries of the Public Forest Reservation and the Frac.E. Boundary of the Yellowstone National Park in Wyoming, is strictly conformable to the field notes of the survey thereof on file in this office which have been examined and approved.*

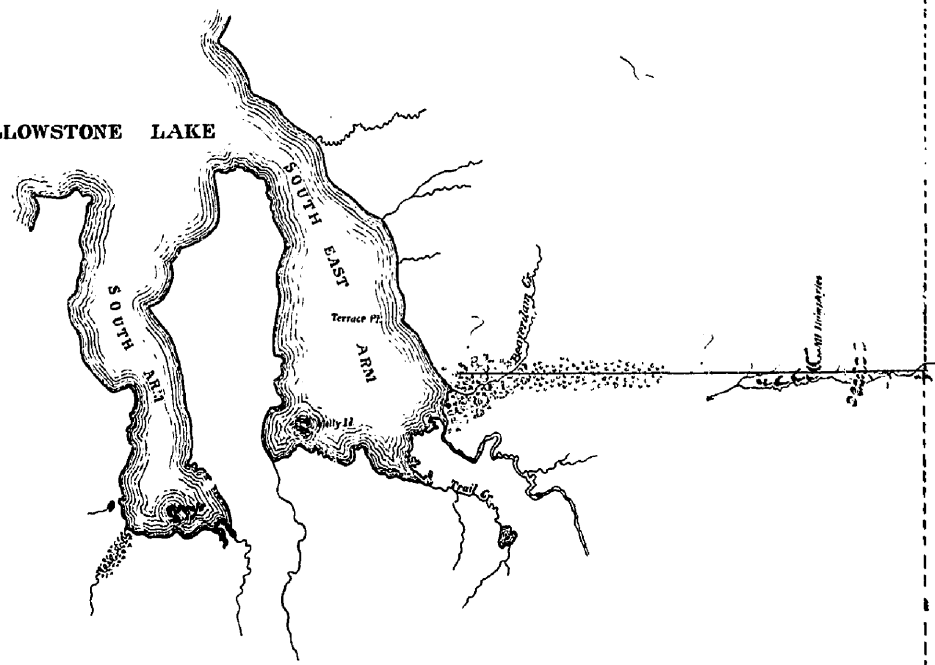
U.S. Sur. Gen's Office  
 Helena Mont July 17, 1894.

*Joseph H. Weil*  
 Sur. Gen.  
 for Montana



YELLOWSTONE NATIONAL PARK

YELLOWSTONE LAKE



South Boundary Yellowstone National Park

PUBLIC

W Y O M I N G

RESERVATION

FOREST

13  
 I D A H O  
 W Y O M I N G

