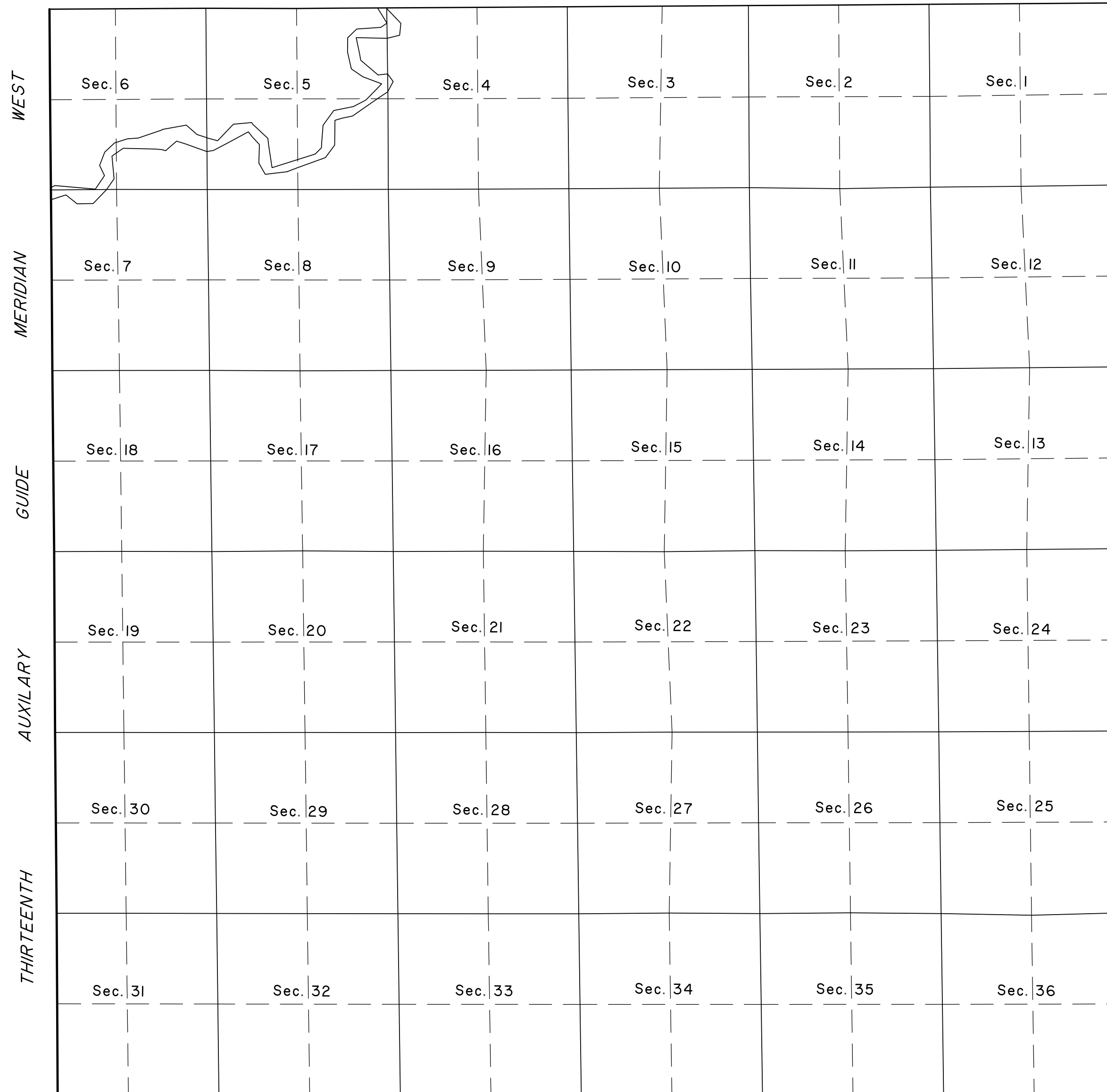
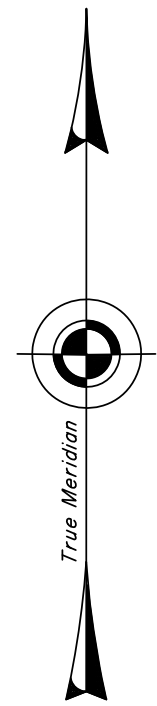


T. 31 N., R. 108 W., Sixth Principal Meridian, Wyoming, Field Note Links

Plat Accession Number(s)	Year(s) of Survey	
		Township Subdivision Plats
	2012	https://www.wy.blm.gov/cadastral/countyplats/sublette/fieldnotes/t31nr108w_109w_gp850fn.pdf
7165	1968	https://www.wy.blm.gov/cadastral/countyplats/sublette/fieldnotes/t31nr108w_gp317fn.pdf
4612	1894	https://www.wy.blm.gov/cadastral/countyplats/sublette/fieldnotes/t31nr108w_c255fn.pdf
		Township Exterior Plats
4321	1889	https://www.wy.blm.gov/cadastral/countyplats/sublette/fieldnotes/ext2492.pdf

TOWNSHIP 31 NORTH, RANGE 108 WEST OF THE SIXTH PRINCIPAL MERIDIAN, WYOMING.

INDEX TO CORNER REMONUMENTATION WITHOUT SURVEY
NOT TO SCALE



NOT TO SCALE

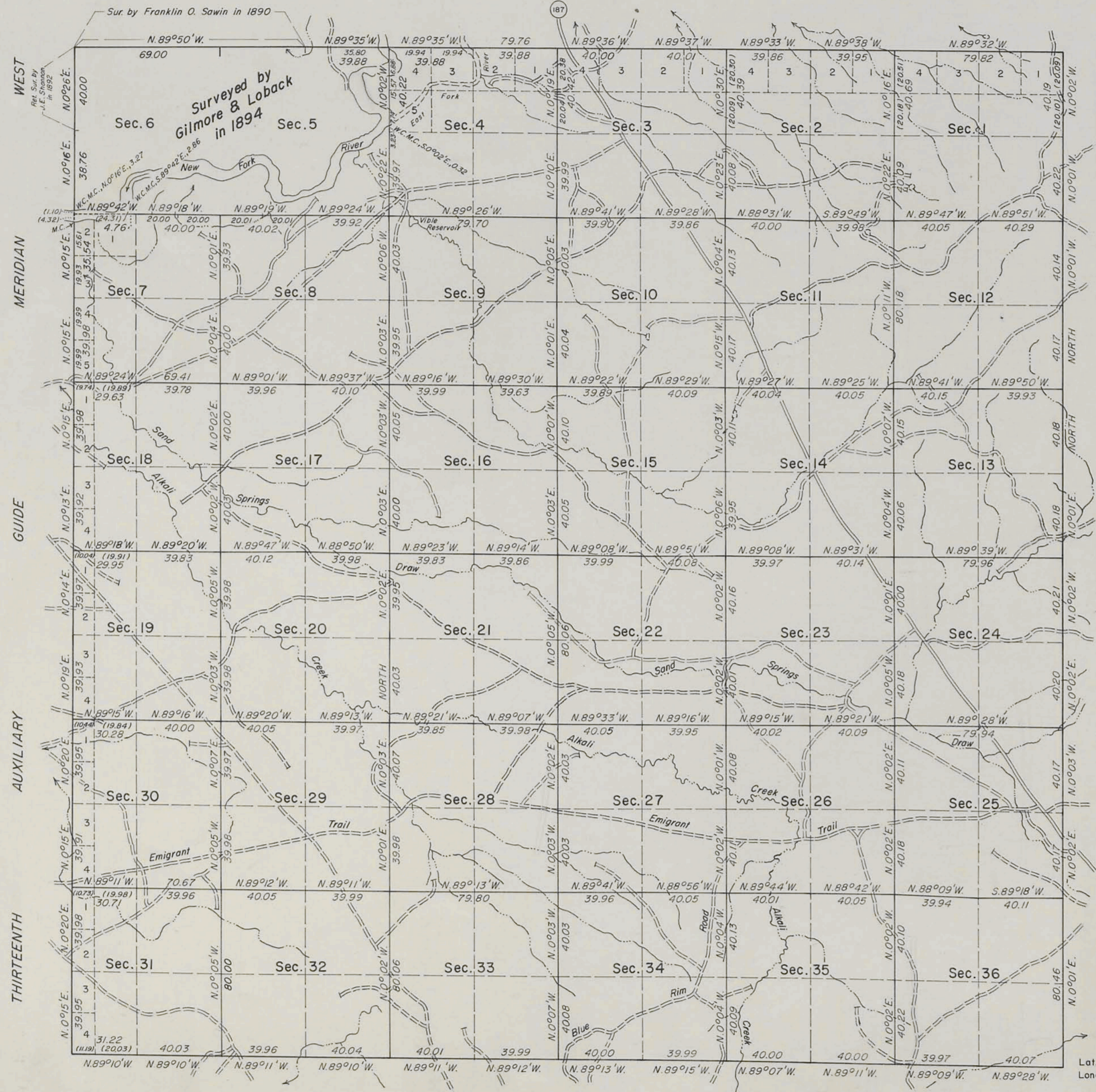
LEGEND

Remonumented Corner as indicated

7165

ORIGINAL

TOWNSHIP 31 NORTH, RANGE 108 WEST OF THE SIXTH PRINCIPAL MERIDIAN, WYOMING. DEPENDENT RESURVEY



History of previous surveys is contained in the field notes.

This plat represents a dependent resurvey of a portion of the Thirteenth Auxiliary Guide Meridian West, through T. 31 N., between Rs. 108 and 109 W., a portion of the north boundary, the east and south boundaries and a portion of the subdivisional lines of T. 31 N., R. 108 W., designed to restore the corners in their original locations according to the best available evidence.

The lottings and areas are as shown on the plat approved May 31, 1895.

This resurvey was executed by Wayne M. Gardner, Supervisory Cadastral Surveyor, beginning May 28, 1968 and completed July 12, 1968, pursuant to Special Instructions dated April 2, 1968, for Group No. 317, Wyoming.

UNITED STATES DEPARTMENT OF THE INTERIOR
BUREAU OF LAND MANAGEMENT
Washington, D.C. April 3, 1972

This plat is strictly conformable to the approved field notes, and the survey having been correctly executed in accordance with the requirements of law and the regulations of this Bureau, is hereby accepted.

For the Director

Clark J. Sumner

Chief, Division of Cadastral Survey

Lat. 42° 36' 16" N.
Long. 109° 39' 20" W.

0 5 10 20 40 80
SCALE IN CHAINS

Area Resurveyed 21,361.61 Acres

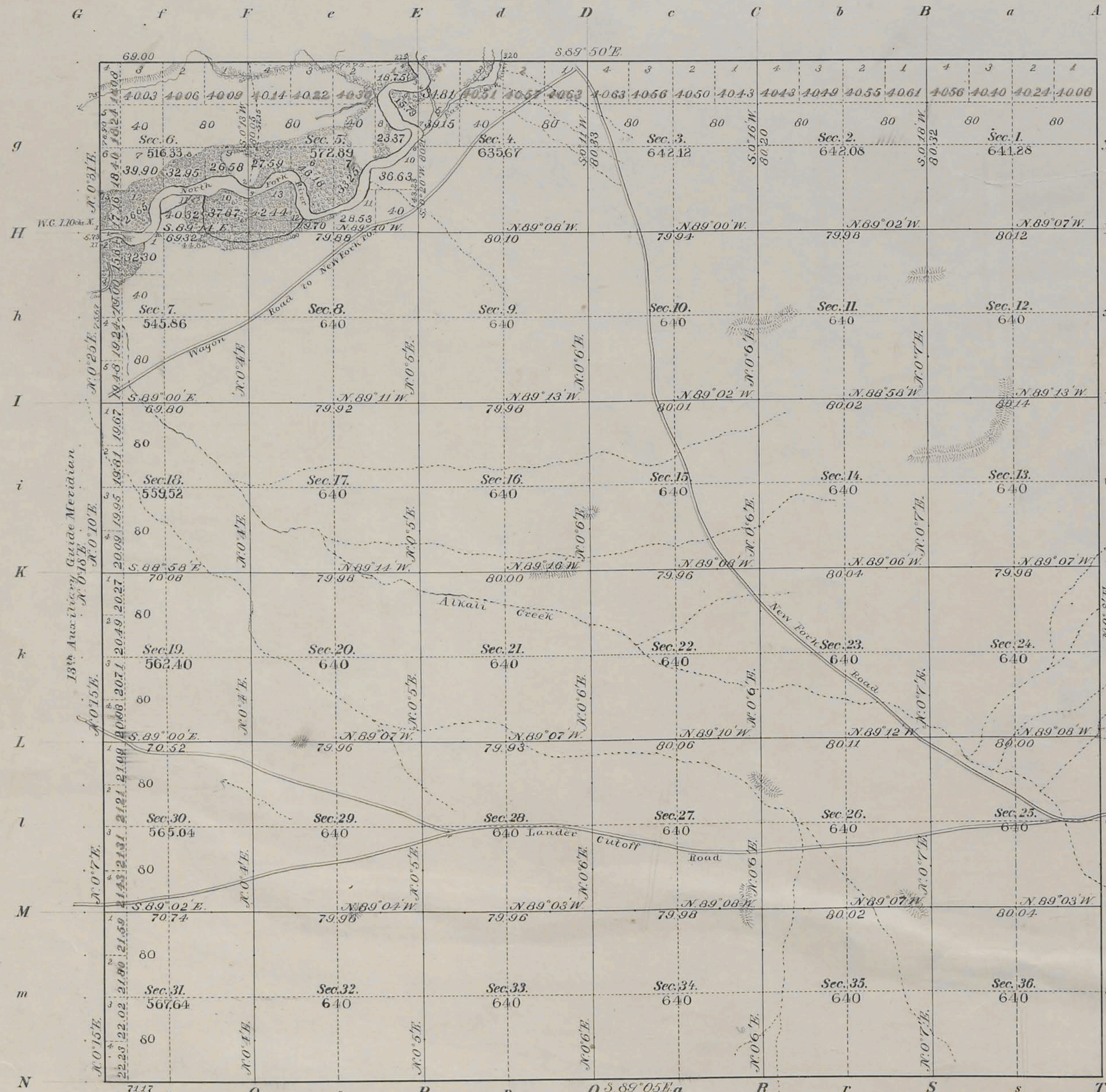
J.A. (loc)
W.H.B.

2699-A

31-108

4612

Township N^o 31 North, Range N^o 108 West of the 6th Principal Meridian



Meanders of

Posts	Courses	Ch ² Lk ²	Posts	Courses	Ch ² Lk ²	Posts	Courses	Ch ² Lk ²

Latitude 42° 36' N.
Longitude 109° 40' W.

Area in Acres
Public Lands 214 508.3
Water Surface 122.33
Total number of Acres 21573.21

Surveys Designated	By Whom Surveyed	Date of Contract	Amount of Surveys M. Ch ² Lk ²	When Surveyed	Mean Mag. Var.
South Boundary Township lines	Gilmore & Loback	June 5, 1894	5 71 17	July 8-9, 1894	18° 30' E.
Subdivisions	" "	" "	59 31 64	Aug. 3-8, 1894	" "
Meanders	" "	" "	6 49 10	" "	" "
N.E. and W. Bnary	Franklin O. Sawin	May 13, 1889	17 69 00	Sept. 1889-1890	16° 42' to 17° 00' E.

The above Map of Township N^o 31 North of Range N^o 108 West of the Sixth Principal Meridian, Wyoming is strictly conformable to the field notes of the survey thereof on file in this office, which have been examined and approved.
Surveyor General's Office, Cheyenne Wyo., May 31, 1895.
J. Charles Thompson
Sur. Gen.

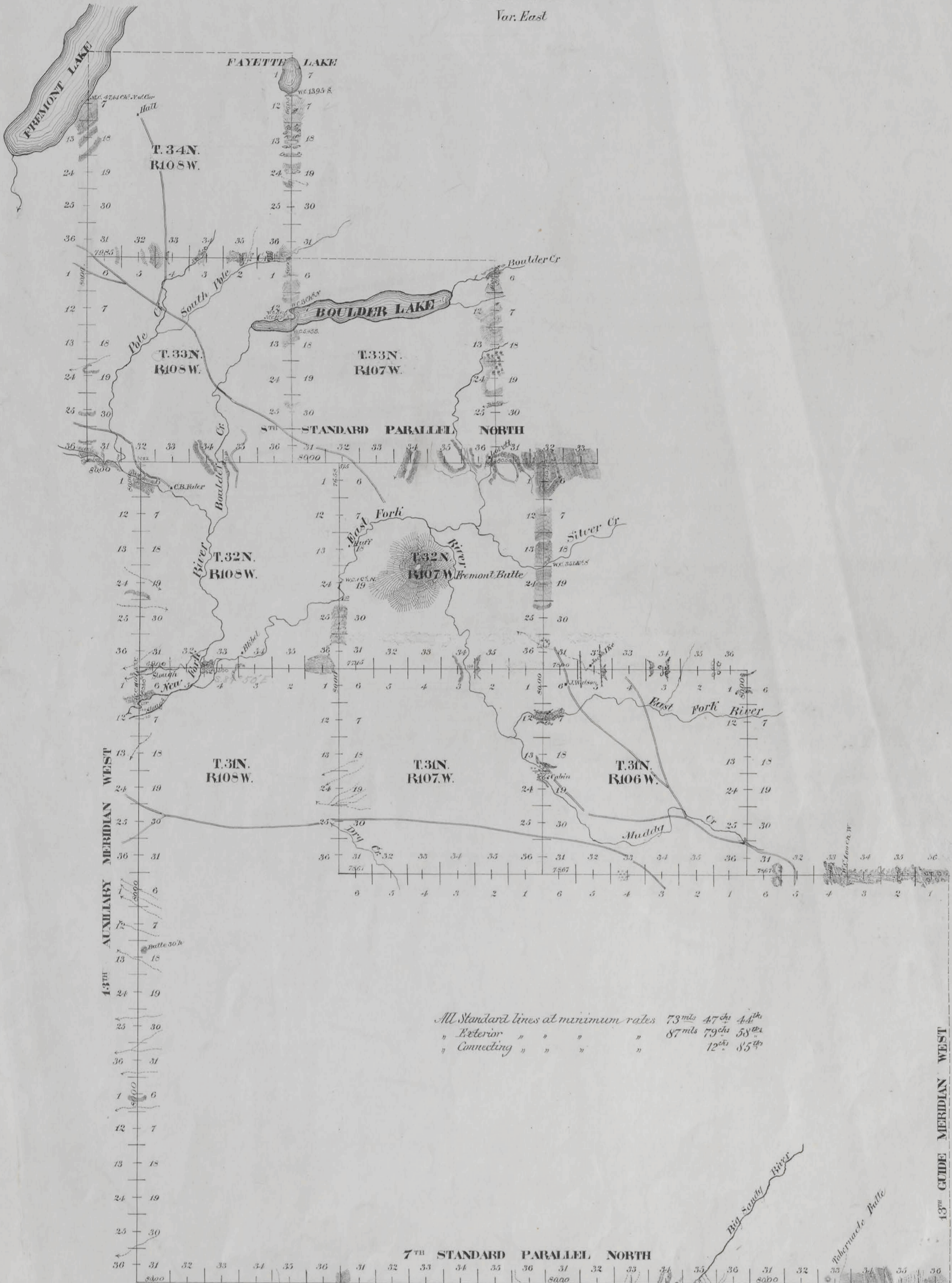
72

Tides

EXTERIOR LINES

Scale 1 inch = 2 miles.

Var. East



All Standard lines at minimum rates 73 mls 47 chs 44th
 " Exterior " " " " 87 mls 79 chs 58th
 " Connecting " " " " 12th 85th

7th STANDARD PARALLEL NORTH

Survey Designated	By whom Surveyed	Date of Contract	Amount of Surveys 36 th Ch ^s 12 th	When Surveyed	Magnetic Decl ⁿ
7 th Stand Par	Franklin & Savin	May 13, 1889	24 0 0	Sept 11 15 1889	16° 47' East
13 th Aux Mer	" " "	" " "	34 47 44	Sept. 24-Oct. 6 89	17° 11' "
8 th Stand Par	" " "	" " "	15 0 0	Oct 7-9 1889	17° 37' "
Exterior Lines	" " "	" " "	87 79 58	Sept 12-13 1889	16° 45' to 18° 36' B
Connections	" " "	" " "	12 85	Sept 12-31 1890	

The above diagram of the 7th Standard Parallel North in Ranges 105, 106, 107 and 108 West, the 8th Standard Parallel North in Ranges 108, 107 and 106 West, the 13th Auxiliary Meridian West in Townships 29, 30, 31, 32, 33 and 34 North. The Exterior lines of Townships 31 North, Ranges 105, 106, 107 and 108 West; Townships 32 North, Ranges 107 and 108 West; Townships 33 North, Ranges 107 and 108 West, and Township 34 North, Range 108 West of the 6th Principal Meridian in Wyoming, is strictly conformable to the field notes of the survey thereof on file in this office, which have been examined and approved.
 Surveyor General
 Cheyenne Wyoming June 30, 1891

30

4321

2492